

A young baseball player in a blue uniform and cap, looking up at a baseball in the air. The player is in profile, facing right, with his hands open and reaching towards the ball. The background is a blurred outdoor setting with a fence and buildings.

Baden[®]

2020

BASEBALL SOFTBALL

PERFECTION

Made with premium game leather, the Perfection Pro Baseball is the preferred baseball for collegiate and elite-level high school baseball programs.



PREMIUM MATERIALS

Pro-grade gray wool windings and a premium leather cover make this the top-of-the-line baseball.

MAXIMUM PERFORMANCE

Proprietary winding technology creates a more durable, high compression core for the best performance.

CONSISTENT FEEL

Cushioned cork center keeps leather tight to the core, eliminating stretch and undue softness found in other baseballs.

OFFICIAL BALL OF:



GAME BASEBALLS

PERFECTION® COLLEGIATE FLAT SEAM

3B-PPROF-CL

- Pro-grade premium leather cover
- New Collegiate Flat Seam™
- Pro-grade gray wool windings
- Ballistic Winding Technology™
- Cushioned cork center
- Meets NCAA specifications
- Recommended for collegiate level play



PERFECTION® PRO

3B-PPRO

- Pro-grade premium leather cover
- Performance Raised Seam™
- Pro-grade gray wool windings
- Ballistic Winding Technology™
- Cushioned cork center
- NFHS approved
- Recommended for high school level play



PERFECTION® NFHS/NOCSAE

3B-NFHS

- Pro-grade premium leather cover
- Performance Raised Seam™
- A-grade gray wool windings
- Ballistic Winding Technology™
- Cushioned cork center
- NFHS approved
- Recommended for high school level play, senior youth and youth leagues



OFFICIAL LEAGUE BASEBALLS

OFFICIAL LEAGUE

2BBG

- Premium leather cover (A-grade)
- Performance Raised Seam™
- Premium blend windings
- Ballistic Winding Technology™
- Cushioned cork center
- Recommended for high school practice

AVAILABLE IN BUCKETS OF 2.5 DOZEN



Little League
2BBLLG

SENIOR
Little League
2BBSLG

DIZZY DEAN
BASEBALL, INC.
Johnny Phillips' 20mm
2BBDDG

OFFICIAL
LEAGUE
2BBGU

OFFICIAL
Babe Ruth League
2BBBRG

AMERICAN
LEGION
2BBG-AL

OFFICIAL PONY BASEBALL
1951 2001
2BBPLG

Baseball Federation
2BBBPAG

OFFICIAL LEAGUE COLLEGIATE FLAT SEAM

2BBGF

- Premium leather cover (A-grade)
- New Collegiate Flat Seam™
- Premium blend windings
- Ballistic Winding Technology™
- Cushioned cork center
- Recommended for college practice



OFFICIAL LEAGUE

2BBGU

- Premium leather cover (A-grade)
- Performance Raised Seam™
- Premium blend windings
- Ballistic Winding Technology™
- Cushioned cork center
- Approved for all USSSA sanctioned tournaments



OFFICIAL LEAGUE

1BBG

- Premium leather cover (B-grade)
- Performance Raised Seam™
- Synthetic blend windings
- Ballistic Winding Technology™
- Cushioned cork center



Little League.
1BBLLG

DIZZY DEAN
BASEBALL, INC.
Johnny R. Phillips comm.
1BBDDG

Approved
DIXIE BASEBALL
BOYS & MAJORS
Donny Finner
COMMISSIONER
1BBDDG

Approved
RIPKEN
BASEBALL
COMMISSIONER
A Division of Babe Ruth League Inc.
1BBBRG

GRAND SLAM

B100

- Premium leather cover (B-grade)
- Performance Raised Seam™
- Synthetic blend windings
- Ballistic Winding Technology™
- Cushioned cork center



TRAINING BASEBALLS

BALLISTIC™ BASEBALL

PBBKS

- Genuine leather pitching machine ball
- Flat Kevlar seam
- Dura cork/rubber core maintains its shape longer
- Universal in any pitching machine
- Alternating red and blue stitching differentiates from game and practice balls

AVAILABLE IN BUCKETS OF 2.5 DOZEN



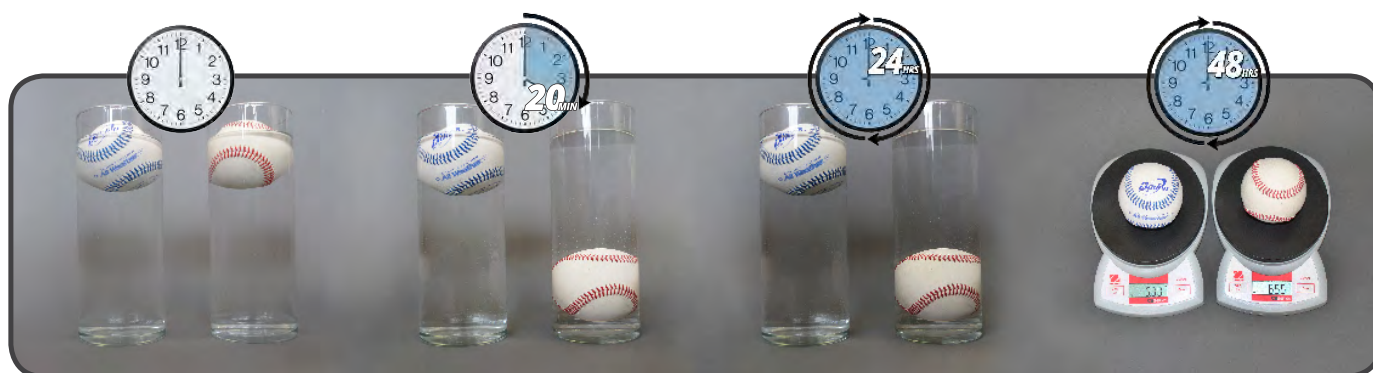
WHY RUIN ANOTHER GAME BALL?

DEFY THE RAIN

with the

ALL WEATHER™ BASEBALL

- Save up to 50% of your baseball budget—don't waste standard wound balls when it's wet.
- Balls remain playable even when wet and return to original weight after 24 hours drying time.
- Differentiate from your official league baseballs with our blue seam.
- Doubles as a great practice ball in dry conditions outside.



The All Weather ball and the traditional ball are placed into water at the same time.

After 20 minutes the traditional ball sinks due to moisture absorption while the All Weather ball is still afloat.

After 24 hrs in the water the All Weather ball is still floating!

With 24 hrs of drying time, the All Weather ball has returned to its original weight, while the traditional ball remains unplayable.

ALL WEATHER™ BASEBALL

PR-0A

- Genuine leather cover
- Exclusive CoreGuard™ Moisture Protection Technology
- Performance Raised Seam™
- Cork/rubber center
- Blue stitching to avoid mixing with other practice balls

AVAILABLE IN BUCKETS OF 2.5 DOZEN



COREGUARD
MOISTURE PROTECTION TECHNOLOGY



TRAINING BALLS

SEAMED PITCHING MACHINE BASEBALL

PBBRS

- Genuine baseball appearance trains your eye for the real pitch
- Patented inset seams protect seam color from wearing off
- White, 9" dimpled, official weight
- Great for wet weather batting

AVAILABLE IN BUCKETS OF 2.5 DOZEN



FEATHERLITE™ TRAINING BASEBALL

SBBR

- Patented Featherlite™ limited flight lightweight pitching machine baseball
- Genuine baseball appearance trains your eye for the real pitch
- Patented inset seams protect seam color from wearing off
- White, 9" dimpled, approx. 1.5 oz.
- Great for training and youth
- Indoor/outdoor



BIG LEAGUER™ TRAINING BASEBALL

BL9

- 9" plastic training ball
- Genuine baseball appearance trains your eye for the real pitch
- Inset seams protect seam color from wearing off
- Tough construction prevents cracking and splitting

AVAILABLE IN MESH BAGS OF 4 DOZEN
OR PACKS OF 1 DOZEN

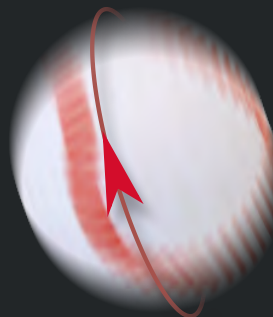


SEEING IS BELIEVING

Different pitches will produce different spin and seam movement. Learn to identify multiple pitch types in the cage. Baden training balls are the ONLY practice balls to feature an inset red seam.

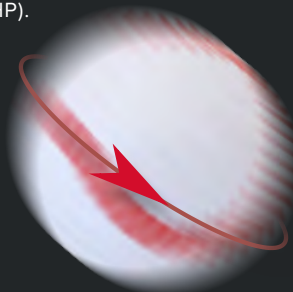
FASTBALL

Significant backspin and seam movement, Vertically blurred, 6 o'clock to 12 o'clock rotation.



CURVEBALL

Large amount of horizontal and vertical movement, Slower rotation than a fastball, 11 o'clock to 5 o'clock rotation (RHP).



SLIDER

More horizontal than vertical movement, Faster rotation than a curveball, 9 o'clock to 4 o'clock rotation.



SAFETY BASEBALLS

SAFETY T-BALL

SAF-BST

- Level 1 Safety
- Sponge rubber center
- Synthetic leather cover



SAFETY BASEBALL

SAF-5S

- Level 5 Safety
- Synthetic leather cover
- Commonly used for coach pitch



AUTOGRAPH BASEBALLS

AUTOGRAPH BASEBALL

ABB-B

- Blank panels
- Synthetic Cover
- Red stitching
- Customization available

*For more customization options
see page 8.*

Also, see equipment on page 17.



CUSTOM BASEBALL

ANY TEAM, ANY EVENT

- Professional customization makes official team property easy to spot and harder to steal
- Add a logo to promote your team, organization or business
- Create visually attractive, one-of-a-kind balls for games, practices or gifts
- Easily identify and avoid costly mix-ups of your game and practice balls

OVERSEAS CUSTOMIZATION

- 90 to 120 day lead time
- Customized look and logo
- 100 dozen minimum order

Customize your logo at the factory or keep things simple with a pad print application. It's your ball, your choice!

DOMESTIC PAD PRINT

- 2-3 week lead time
- Choose up to 3 different colors for logos
- Available on all game and practice balls
- 10 dozen minimum order



PERFECTION

Made of premium game leather, the Perfection Leather Fastpitch Softball is the preferred choice for collegiate and elite-level high school programs.



PREMIUM MATERIALS

Top-of-the-line game softball with a specialty designed leather cover for better feel and grip.

MAXIMUM CONTROL

Rounded seams give the pitcher maximum control.

CONSISTENT FEEL

Unique Corebond process keeps the leather tight to the core, eliminating stretch and undue softness.

OFFICIAL BALL OF:



GAME FASTPITCH SOFTBALLS

PERFECTION® SERIES GAME BALL

2BSFPY

- Perfection® leather cover
- Control Seam™
- Poly core center
- Optic yellow
- Red stitching
- Size: 12"
- NFHS approved



COR .47
375 LBS.



WHY RUIN ANOTHER GAME BALL?

DEFY THE RAIN

with the ALL WEATHER™ SOFTBALL

- Save up to 50% of your softball budget—don't waste game balls when it's wet outside
- Premium tac grip for wet weather conditions.
- Differentiate from your official league softballs with our blue seam.
- Doubles as a great practice ball in dry conditions.

ALL WEATHER™ SERIES FASTPITCH

2BSFPY / 2BS11SY

- Composite CoreGuard™ optic yellow cover
- Remains playable even when wet
- Returns to original weight after 24 hours drying time
- Poly core center
- Size: 12" & 11"



OFFICIAL LEAGUE FASTPITCH SOFTBALLS

USA SOFTBALL® (ASA) APPROVED

2A312FLY / 2A311FLY / 2A311FY

- Available in Perfection® leather or composite covers
- Control Seam™
- Poly core center
- Optic yellow
- Red stitching
- Sizes available: 12" & 11" Leather, 11" Composite



COR .47
375 LBS.

FORMERLY ASA SOFTBALL



NSA® APPROVED LEATHER

FPN12 / FPN11

- Perfection® leather cover
- Control Seam™
- Poly core center
- Optic yellow
- Black stitching
- Size: 12" & 11"



COR .47
375 LBS.



USSSA® APPROVED LEATHER

2U312FLY / 2U311FLY

- Perfection® leather cover
- Control Seam™
- Poly core center
- Optic yellow
- Blue stitching
- Size: 12" & 11"



COR .47
375 LBS.



USA SOFTBALL® SLOWPITCH SOFTBALLS

FIRE™

USA300YS/USA300YS11

- Fire™ power core
- Optic yellow synthetic cover
- Red stitching
- Size: 12" & 11"



COR .52
300 LBS.

FORMERLY ASA SOFTBALL



NSA® SLOWPITCH SOFTBALLS

FIRE™

SPN12

- Fire™ power core
- Optic yellow synthetic cover
- Black stitching
- Size: 12"



COR .44
400 LBS.



FIRE™

SPN11

- Fire™ power core
- Optic yellow synthetic cover
- Black stitching
- Size: 11"



COR .44
400 LBS.



USSSA® SLOWPITCH SOFTBALLS

CLASSIC PLUS

ØU375YCP

- Fire™ power core
- Optic yellow synthetic cover
- Blue stitching
- Size: 12"



COR .52
300 LBS.



CLASSIC W

1U4ØØ11YS

- Fire™ power core
- Optic yellow synthetic cover
- Blue stitching
- Size: 11"



COR .44
400 LBS.



CLASSIC M

ØU325YS

- Fire™ power core
- Optic yellow synthetic cover
- Blue stitching
- Size: 12"



COR .40
325 LBS.



NON-LICENSED SLOWPITCH SOFTBALLS

FIRE™ SENIOR SLOWPITCH

2SB550YS

- Fire™ power core
- Optic yellow synthetic cover
- Black stitching
- Size: 12"

COR .44
375 LBS.



AUTOGRAPH SOFTBALLS

AUTOGRAPH SOFTBALL

ASB-Y

- Synthetic cover
- Blank panels
- Red stitching

*For more customization options
see page 16.*

Also, see equipment on page 17



TRAINING BALLS

SEAMED PITCHING MACHINE SOFTBALL

PSBRSY

- Genuine softball appearance trains your eye for the real pitch
- Patented inset seams protect seam color from wearing off
- Optic yellow
- 12" official weight

AVAILABLE IN BUCKETS OF 2 DOZEN



FEATHERLITE™ LIMITED FLIGHT TRAINING SOFTBALL

SSBR

- Genuine softball appearance trains your eye for the real pitch
- Patented inset seams protect seam color from wearing off
- Optic yellow
- Great for indoor training
- Size: 12", approx. 3oz.



SAFETY COMPOSITE TRAINING SOFTBALL

SF12Y1 / SF11Y1

- Level 1 Safety
- Optic yellow synthetic cover with red stitching
- Size: 12" & 11"
- 11" recommended for ages 6-10
- * Safety training balls are not intended for competitive play



BIG LEAGUER™ TRAINING SOFTBALL

BL12

- Simulates the pitch of a real softball
- Inset seams protect seam color from wearing off
- Tough construction prevents cracking and splitting
- 12" plastic training ball

AVAILABLE IN MESH BAGS OF 2 DOZEN OR PACKS OF 6



BALLISTIC™ SOFTBALL

PSBKS

- Genuine leather pitching machine softball
- Flat reinforced seam
- Optic yellow
- Dura poly core maintains its shape longer
- Size: 12"



CUSTOM SOFTBALL

ANY TEAM, ANY EVENT

- Professional customization makes official team property easy to spot and harder to steal
- Add a logo to promote your team, organization or business
- Create visually attractive, one-of-a-kind balls for games, practices or gifts
- Easily identify and avoid costly mix-ups of your game and practice balls

OVERSEAS CUSTOMIZATION

- 90 to 120 day lead time
- Customized look and logo
- 102 dozen minimum order

Customize your logo at the factory or keep things simple with a pad print application. It's your ball, your choice!

DOMESTIC PAD PRINT

- 2-3 week lead time
- Choose up to 3 different colors for logos
- Available on all game and practice balls
- 6 dozen minimum order



EQUIPMENT

EQUIPMENT BAG

BSK

- Heavy-duty construction and utility pocket
- Inside pocket
- Adjustable/removable shoulder strap



MESH BALL BAG

MBB

- Rugged fine nylon mesh suitable for all types of equipment
- Locking drawstring
- 36" x 24"



BALL BUCKET

BUCKET

- Holds 5 dozen baseballs or 2 dozen softballs
- Padded lid doubles as a seat



BASEBALL & SOFTBALL NOTEBOOKS

NOTBK-04 / NOTBK-07

- Synthetic leather pebbled cover
- Logos are embossed on cover
- Holds one 8.5" x 11" pad inside
- Pen and business card holder



ONE-HAND TRAINER

L10618 / L10622

- Hardwood Composite
- Axe shape promotes proper hitting position
- Axe grip for superior comfort, less fatigue
- Length: 18" & 22" Weight: 17-18 oz. & 20 oz.



FUNGO

L10535C

- Maple Composite
- Axe shape decreases fatigue and provides more comfort
- Length: 35" Weight: 22-23 oz.



TERRITORY MANAGERS

NATIONAL SALES MANAGER

Jerry Hink 253-250-6975 | jhink@badensports.com

SALES SUPPORT

Kailiana Johnson 253-883-5161 | kailianaj@badensports.com

NORTHERN REGIONS

AK, ID, MT, OR, WA, WY

Brandon Williams
425-757-3247
bwilliams@badensports.com

IA, KS, MN, ND, NE, SD

Shawn Cutter
253-883-5170
shawnc@badensports.com

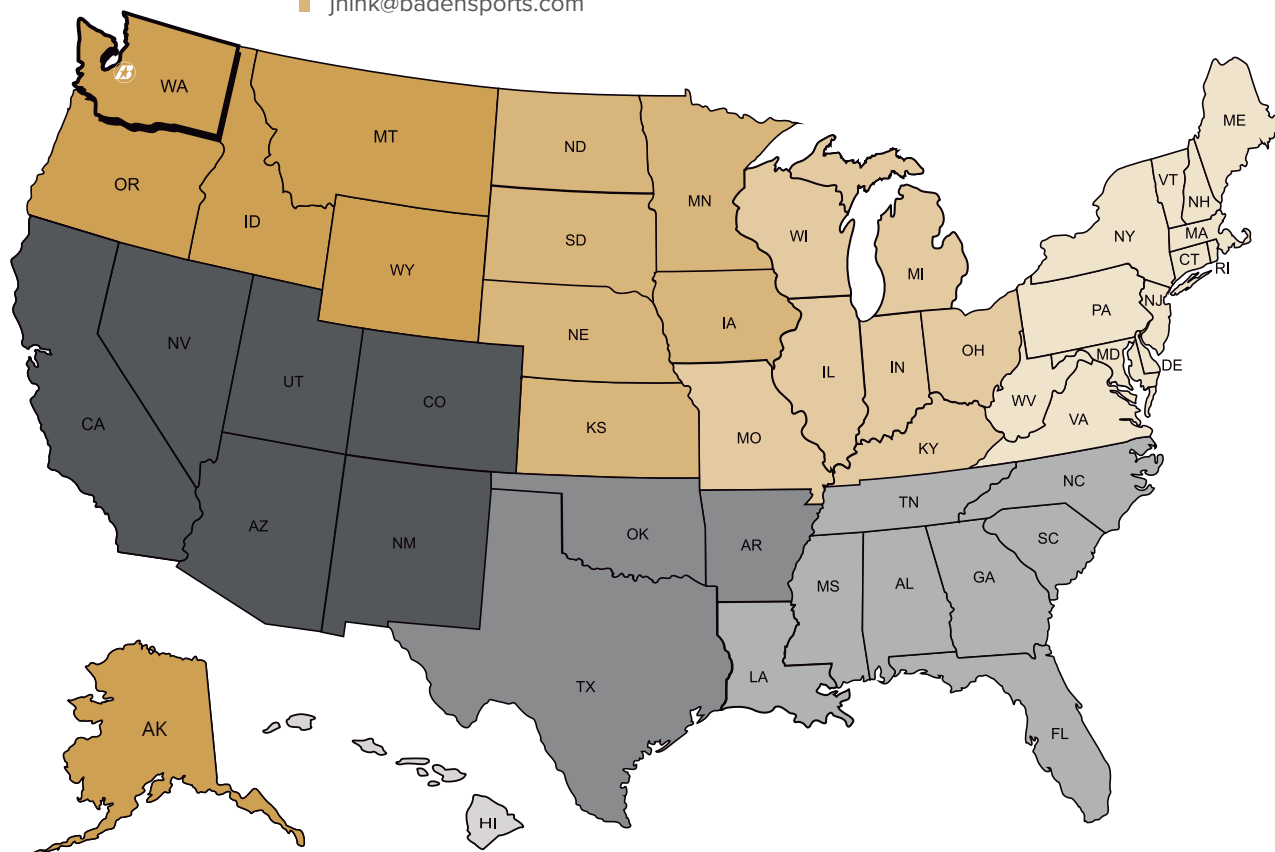
Jerry Hink
253-250-6975
jhink@badensports.com

IL, IN, KY, MI, MO, OH, WI

Bill Leark
708-701-1875
bleark@badensports.com

CT, DC, DE, MA, MD, ME, NH,
NJ, NY, PA, RI, WV, VA, VT

Jeff Simon
484-888-3331
jeffs@badensports.com



SOUTHERN REGIONS

HI

Todd Tice
253-883-5165
toddt@badensports.com

AZ, CA, CO, NM, NV, UT

Jeremy Schlosser
206-856-7567
jeremys@badensports.com

AR, OK, TX

Matt Nutt
682-201-4813
mnutt@badensports.com

AL, FL, GA, LA, MS, NC, SC,
TN

Shawn Cutter
253-883-5170
shawnc@badensports.com

Jerry Hink
253-250-6975
jhink@badensports.com

THE OFFICIAL BALL OF *YOU.*



Baden

BADENSPORTS.COM | 1.800.544.2998