



Southern Medical Imaging Consultants, LLC

Board of Commissioners of the District of Lower Cameron Parish Hospital Service District

Proposal for Imaging Equipment for Temporary Modular Acute Care Hospital Facility

Southern Medical Imaging Consultants, LLC
6706 Burden Lane
Baton Rouge, LA. 70808
Commercial License # 66091
David Crifasi, CEO
225-937-4732
david@smic.us

December 16, 2022

Southern Medical Imaging Consultants has been servicing hospitals in Louisiana for over 12 years. SMIC has CT and x-ray experience transforming medical imaging from a mobile imaging setting with the expertise to transition a hospital from a mobile to a modular building or in-house location. The equipment quoted is installed and serviced by engineers with over thirty years of experience on the proposed equipment. The quoted Imaging Equipment will comply with all Louisiana laws and statutes, including but not limited to CMS and Medicaid Services' requirements, hospital building code requirements, Louisiana Department of Health hospital regulatory requirements, Louisiana Fire marshal requirements, and all other departments mentioned in this RFP.

SMIC's purchasing power within our organization enables us to compete with new and refurbished imaging equipment against most manufacturers in a challenging industry. SMIC currently provides CT and x-ray services to Bienville Medical Center in Arcadia, Louisiana. SMIC started service in 2007 with a single-slice mobile CT. As the CT business grew, SMIC upgraded the CT to a four-slice. Several years later, a radiologist requested new studies, which led to a 16-slice CT in a mobile coach installed. In 2018 SMIC upgraded Bienville Medical with a GE Optima 16 slice housed in a modular building. The building also accommodates physical and occupational therapy in a separate room.

SMIC will need verification of a cement pad above sea level of at least four (4) feet. A dedicated power line with 150 amps and 480 volts of three-phase power with a surge protector, a lockable disconnect box, and a Russell Stoll 200-amp female receptacle within twenty-five (25) feet of the electrical receptacle on the unit. Lower Cameron Parish Hospital is responsible for damages to the unit due to power that does not meet specifications.

David Crifasi, CEO of Southern Medical Imaging Consultants, will be working directly with the district in procuring the Imaging Equipment for the temporary modular hospital facility in Creole, Louisiana. David will have engineers on staff to communicate with the district to install the CT and x-ray systems.

SMIC will propose an option for the CT in a mobile coach. A sixty four, (64) slice can perform limited emergency angiography, such as a pulmonary embolism diagnostic study.

The system will be thoroughly inspected and must pass standard testing required by the manufacturer.



Southern Medical Imaging Consultants, LLC

The proposed X-ray system will be a ceiling-mounted GE Proteus with a 50-kW generator. The ceiling height for this system must be 9' to accommodate the system and the table distance. If the ceiling height of nine feet is impossible, the second option would be a new CoreLabs ceiling-mounted system that can accommodate an eight-foot ceiling. This option would be more expensive. SMIC will quote both options.

SMIC is a dealer representative for CoreLabs, a leading x-ray equipment. CoreLabs is part of a small group of manufacturers in the USA with hands-on quality control building equipment in the USA. CoreLabs has never had end-of-life equipment and produces a better-quality system at a reduced price than most manufacturers. All parts are inspected to perform to the manufacturer's specifications.

Site Specifications

Service: Our service engineer available for this facility is located 74 miles from Cameron Parish Hospital, and our service technicians have over 30 years of experience in the medical imaging business. Response time from a call will be returned within 30 minutes over the phone to access the situation. SMIC has the capability to diagnose and look at the CT console through a VPN tunnel when set up by the hospital. This allows early detection in most cases so parts needed can be ordered in a timely manner. Parts (when needed) for repairs would be delivered overnight through UPS, or FedEx ground or air freight to the hospital, or local FedEx office for our engineer to pick up to complete any repairs needed. SMIC understands the dependence emergency rooms have on imaging equipment and will respond quicker than most manufacturers. SMIC has multiple options for engineers available to service your equipment, if necessary, in central, south, and north Louisiana if needed.

References:

Bienville Medical Center, Arcadia, La. Administrator – Kirk Lemoine – 318-263-4700, email – klemoine@ahmgt.com. Currently servicing GE Optima 540 16 slice CT, and a mobile x-ray.

Minden Imaging Center – Kelly McGimsey, Assistant Administrator- 318-464-6459, cell. [Email- kmcgimsey@ahmgt.com](mailto:kmcgimsey@ahmgt.com) Ultrasound, New CoreLabs x-ray system.

Richardson Medical Center – Rayville, La. Larry Romero, Director of Radiology. 318-728-8358, larryr@richardsonmed.org. SMIC is currently serving a GE Proteus x-ray system, and a GE Legacy R&F room.

Sabine Medical Center, Blake Langton, Radiology Director – Work – 318-256-7480. Email - blakel@sabinemedicalcenter.net. SMIC installed a GE Optima 660 in 2018. SMIC currently services the CT and was chosen over a company that performs service for all Allegiance Hospitals.

David Crifasi, CEO SMIC – Cell -225-937=4732. Email – david@smic.us.



Southern Medical Imaging Consultants, LLC

Pricing: GE 64 slice CT in a mobile coach. GE CT can perform Procedures such as Cardiac and coronary vessel analysis, Coronary artery calcification scoring, Angiography studies, Stroke workup, Pulmonary emboli, Spinal injuries, Abdominal injuries, Kidney, Liver and Lung exams. INCLUDES: CT Gantry. Operator Console GOC6, patient table, system PDU, system cables, backup software, manuals, phantom holder, system QA Phantom, two LCD monitors and keyboard.

Price Per Month \$20,000

MedRad Stellant Flex contrast injector. Compatible with both CT systems

Price per month - \$560

GE Proteus X-ray system with 50kW generator to accommodate bariatric patients. The refurbished system includes a multi-directional float table and wall bucky. The system includes a digital radiography detector in the configuration.

Price per Month \$3,000

New CoreLabs X-ray system with 50kW generator to accommodate bariatric patients. The system includes a multi-directional float table and wall bucky. The system includes a digital radiography detector in the configuration. This system will accommodate an eight (8) foot ceiling height.

Price per Month \$5,600

Refurbished GE AMX 4 Portable x-ray including Vivix digital radiography detector. The GE AMX portable x-ray is a solid dependable portable x-ray. SMIC incorporated the popular Vivix digital detector. This pricing option comes with a mounted computer on the x-ray mast. See pictures below.

Price per Month \$1,750

Refurbished GE AMX 4 Portable x-ray including Vivix digital radiography detector. This GE AMX portable x-ray is the same system as above with a handheld laptop instead of the mounted computer on the x-ray mast.

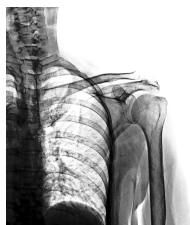
Price per Month \$1,450

Three Phase uninterruptible power supply sufficient to supply power to the gantry and table of the CT scanner. This UPS meets the minimum power storage capacity for the CT from the OEM.

Price per Month - 215

Two phase UPS for the CT console sufficient to supply power to the CT console. This UPS meets the minimum power storage capacity for the CT console.

Price per Month No charge



Southern *Medical Imaging Consultants, LLC*



ALL-IN-ONE TOUCHSCREEN PC

- 17-inch (All-in-One) Medical Grade PC, (1280 x 1024 resolution)
- 15-Wire Resistive Touch Screen
- Intel Dual Band Wireless-AC 7260 • Touchscreen Stylus Pen
- 8GB DD R4-2400MHz SO-DIMM •



Southern *Medical Imaging Consultants*, LLC





Southern *Medical Imaging Consultants*, LLC





Southern *Medical Imaging Consultants*, LLC

