

Jefferson Parish, Louisiana

Wastequip Bid Response



Bid No.: 50-00128375

Bid Title: Purchase of (1) 8-Cubic Yard
Front Load Container

Bid Due: October 9, 2019

Bid Opening Time: 11:00 am.



(Corporate Headquarters)

6525 Morrison Blvd., Suite 300

Charlotte, NC 28211

877.468.9278

www.wastequip.com

ORIGINAL

WASTEQUIP®

Corporate Profile

Founded in 1989 by Chuck Walton, Wastequip was created to consolidate the highly fragmented and regionalized waste equipment manufacturing sector.



The vision was simple: to provide the rapidly growing base of large national haulers a one-stop shop for their most significant needs including standardized equipment, highly durable products, inventory availability, faster delivery and outstanding customer service needed to continue their growth trajectory.

To achieve this goal, the company immediately set out to establish an extensive North American manufacturing and service footprint. Over the course of the next nearly 25 years, Wastequip systematically acquired the top companies and best brands from tarping systems and vacuum trucks to hoists and carts, including Galbreath, Cusco, Accurate, Mountain Tarp, Pioneer, and finally, Toter, – the industry’s premier line of plastic waste and recycling carts and containers - uniting them under the Wastequip umbrella.

Headquartered in Charlotte, N.C. with manufacturing and service facilities throughout North America, Wastequip is the leading North American manufacturer of waste handling and recycling equipment. With over 2,000 employees and 31 facilities, Wastequip has built a reputation for manufacturing expertise and product innovation. Privately held, Wastequip is the only manufacturer to offer a full line of steel and plastic products to collect, handle and transport just about any type of waste and recyclables.

Our comprehensive product line includes the top brands in their respective areas:

- **Wastequip** brand compactors, balers, steel containers and environmental containers
- **Toter** brand plastic carts and containers
- **Galbreath** brand hoists, container handlers and trailers
- Tarping systems, sold through our **Mountain Tarp** and **Pioneer** brands
- Industrial vacuum trucks and hydro excavators sold through our **Cusco** brand
- OEM and aftermarket parts sold through **Go To Parts**

Wastequip has locations throughout the U.S. and Canada, allowing us to serve many of our customers on a local level and creating economies of scale not possible with smaller manufacturers. Since many of our brand companies serve sectors in which it can be difficult and costly to ship products from remote locations, this gives us a distinct advantage over competitors with a smaller footprint.

Wastequip has strong partnerships with large national haulers, as well as many of the smaller regional and local players, and our products are currently in use in thousands of municipalities across the country. We’ve also developed strong fleet relationships across other market segments. Many of these customer relationships have been in place for many years, giving us a strong competitive advantage and creating a barrier to entry for other organizations.



Points of Contact for the State of Louisiana

Bid Information: Marya M. Jenkins, Bid/Contract Specialist
841 Meacham Road
Statesville, NC 28677
Direct: 800-424-0422 Ext 244
Fax: 704-878-0734
Email: MJenkins@wastequip.com

Account Rep: Steve Hurtt, Regional Sales Manager
Direct: 469-853-7729
Email: SHurtt@wastequip.com

P.O. Remit: Wastequip Mfg. Co., LLC
Marya M. Jenkins, Bid/Contract Specialist
841 Meacham Road
Statesville, NC 28677

Invoice Remit: Wastequip, LLC
PO Box 603008
Charlotte, NC 28260-3008
Direct: 704-366-7140



CENTRALBIDDING
FROM CENTRAL AUCTION HOUSE

**5000128375- PURCHASE OF (1) EIGHT CUBIC YARD FRONT LOAD
CONTAINER FOR THE JEFFERSON PARISH FIRST PARISH COURT**
Jefferson Parish Government

Project documents obtained from www.CentralBidding.com
04-Oct-2019 11:20:08 AM



Bid Number 50-128375

**Purchase of (1) eight cubic yard front load container for the Jefferson
Parish First Parish Court**

October 9, 2019 at 11:00 am

ATTENTION VENDORS!!!

**Please review all pages and respond accordingly, complying with all provisions
in the technical specifications and Jefferson Parish Instructions for Bidders and
General Terms and Conditions. All bids must be received in the Purchasing
Department by the bid due date and time.**

**Jefferson Parish Purchasing Department
200 Derbigny Street
General Government Building, Suite 4400
Gretna, LA 70053**

**Buyer Name: Rae Lynn Scott
Buyer Email: rscott@jeffparish.net
Buyer Phone: 504-364-2688**

DATE: 10/04/2019

INVITATION TO BID
THIS IS NOT AN ORDER

Page: 1

BID NO.: 50-00128375

JEFFERSON PARISH
PURCHASING DEPARTMENT
P.O. BOX 9
GRETN, LA. 70054-0009
504-364-2678

VENDOR: 27118 BLANK BID COPY VENDOR

BUYER: RSCOTT@jeffparish.net

Bids will be received until 11:00 AM, 10/09/2019 via online at www.jeffparishbids.net or by hand delivery, USPS mail or other courier service to Purchasing Department, 200 Derbigny Street (General Government Building), Suite 4400, Gretna, LA 70053. For convenience, bidders may also submit bids in the East Bank Purchasing Department, Suite 404, Jefferson Parish Joseph S. Yenni Building, 1221 Elmwood Park Blvd., Jefferson LA 70123. However, if submitting bids on the day of bid opening, bidders must submit at the West Bank location only.

All bids submitted are subject to these instructions and general conditions and any special conditions and specifications contained herein, all of which are made part of this bid proposal reference. By submitting a bid, vendor agrees to comply with all provisions of Louisiana Law, as well be in compliance with the Jefferson Parish Code of Ordinances, Louisiana Code of Ethics, applicable Jefferson Parish ethical standards and Jefferson Parish Resolution No. 113646 and/or Resolution No. 113647. A copy of these resolutions may be obtained from the Office of the Parish Clerk, Suite 6700, Jefferson Parish General Government Building, 200 Derbigny Street, Gretna, LA 70053. You may also obtain a copy by visiting the Purchasing Department webpage at purchasing.jeffparish.net and clicking on On-line forms.

All vendors submitting bids should register as a Jefferson Parish vendor if not already yet registered. Registration forms may be downloaded from <http://purchasing.jeffparish.net> and by clicking on Vendor Information. Current W-9 forms with respective Tax Identification numbers and vendor applications may be submitted at any time; however, if your company is not registered and/or a current W-9 form is not on file, vendor registration is mandatory. Further, a current W-9 form and respective Tax Identification number must be supplied upon contract execution, should you be awarded a contract and/or issued purchase order. Failure to do so may result in delay of payment.

As per LSA-RS 47:301 et seq., all governmental bodies are excluded from payment of sales taxes to any Louisiana taxing body. Quotations shall be based on F.O.B. Delivered, anywhere within the Parish as designated by the Purchasing Department. JEFFERSON PARISH WILL ACCEPT ONE BID ONLY FROM EACH VENDOR. Items bid must meet specifications. JEFFERSON PARISH will accept one price for each item unless otherwise indicated. Two or more prices for one item will result in bid rejection. Bidders are required to complete, sign and return the bid form and/or complete and return the associated line item pricing forms as indicated. The price quoted for work shall be stated in figures. In the event there is a difference in unit prices and totals, the unit prices shall prevail.

JEFFERSON PARISH reserves the right to award contracts or place orders on a lump sum or individual item basis, or such combination, as shall in its judgment be in the best interest of JEFFERSON PARISH. Every contract or order shall be awarded to the LOWEST RESPONSIVE and RESPONSIBLE BIDDER, taking into consideration the CONFORMITY WITH THE SPECIFICATIONS and the DELIVERY AND/OR COMPLETION DATE

PROTESTS: Only those vendors that submit bids in response to this solicitation may protest any element of the procurement, in writing to the Director of the Purchasing Department. Written protest must be received within 48 hours of the release of the bid tabulation by the Purchasing Department. After consultation, the Parish Attorney's Office will then respond to protests in writing. (For more information, please see Chapter 2, Article VII, Division 2, Sec. 2-914.1 of the Jefferson Parish Code of Ordinances.)

JEFFERSON PARISH reserves the right to cancel all or any part of an order if not shipped promptly. No charges will be allowed for parking or cartage unless specified in the quotation. The order must not be filled at a higher price than quoted. JEFFERSON PARISH reserves the right to cancel at any time and for any reason by issuing a THIRTY (30) day written notice to the contractor.

JEFFERSON PARISH requires all products to be new (current) and all work must be performed according to standard practices for the project. Unless otherwise specified, no aftermarket parts will be accepted. Unless otherwise specified, all workmanship and materials must have at least one (1) year warranty, in writing, from the date of delivery and/or acceptance of the project. Any deviations or alteration from the specifications must be indicated on the bid form for each item and upon request, product data for same must be submitted by the time specified by the Purchasing Department.

If this bid requires a pre-bid conference (see Additional Requirements section), bidders are advised that such conference will be held to allow bidders the opportunity to identify any discrepancies in the bid specifications and seek further clarification regarding instructions. The Purchasing Department will issue a written response to bidders' questions in the form of an Addendum.

All formal Addenda require written acknowledgment on the bid form by the bidder. Failure to acknowledge an Addendum on the bid form shall cause the bid to be rejected; JEFFERSON PARISH reserves the right to award bid to next lowest responsive and responsible bidder in this event.

USE OF BRAND NAMES AND STOCK NUMBERS: Where brand names and stock numbers are specified, it is for the purpose of establishing certain minimum standards of quality. Bids may be submitted for products of equal quality, provided brand names and stock numbers are specified. Complete product data may be required prior to award.

Quantities listed are for bidding purposes only. Actual requirements may be more or less than quantities listed.

Bidders are not to exclude from participation in, deny the benefits of, or subject to discrimination under any program or activity, any person in the United States on the grounds of race, color, national origin, or sex; nor discriminate on the basis of age under the Age Discrimination Act of 1975, or with respect to an otherwise qualified handicapped individual as provided in Section 504 of the Rehabilitation Act of 1973, or on the basis of religion, except that any exemption from such prohibition against discrimination on the basis of religion as provided in the Civil Rights Act of 1964, or Title VI and VII of the Act of April 11, 1968, shall also apply. This assurance includes compliance with the administrative requirements of the Revenue Sharing final handicapped discrimination provisions contained in Section 51.55 (c), (d), (e), and (k)(5) of the Regulations. New construction or renovation projects must comply with Section 504 of the 1973 Rehabilitation Act, as amended, in accordance with the American National Standard Institute's specifications (ANSI A17.1-1961).

Jefferson Parish and its partners as the recipients of federal funds are fully committed to awarding a contract(s) to firm(s) that will provide high quality services and that are dedicated to diversity and to containing costs. Thus, Jefferson Parish strongly encourages the involvement of minority and/or woman-owned business enterprises (DBE's, including MBE's, WBE's and SBE's) to stimulate participation in procurement and assistance programs.

INSTRUCTIONS FOR BIDDERS AND GENERAL CONDITIONS**IN ACCORDANCE WITH STATE REGULATIONS JEFFERSON PARISH OFFERS ELECTRONIC PROCUREMENT TO ALL VENDORS**

This electronic procurement system allows vendors the convenience of reviewing and submitting bids online. This is a secure site and authorized personnel have limited read access only. Bidders are encouraged to submit electronically using this free service; while the website accepts various file types, one single PDF file containing all appropriate and required bid documents is preferred. Bidders submitting uploaded images of bid responses are solely responsible for clarity. If uploaded images/documents are not legible, then bidder's submission will be rejected. Please note all requirements contained in this bid package for electronic bid submission.

Please visit our E-Procurement Page at www.jeffparishbids.net to register and view Jefferson Parish solicitations. For more information, please visit the Purchasing Department page at <http://purchasing.jeffparish.net>.

ADDITIONAL REQUIREMENTS FOR THIS BID

PLEASE MATCH THE NUMBERS PRINTED IN THIS BOX WITH THE CORRESPONDING INSTRUCTIONS BELOW.

13

1. All bidders must attend the MANDATORY pre-bid conference and will be required to sign in and out as evidence of attendance. In accordance with LSA R.S. 38:2212(I), all prospective bidders shall be present at the beginning of the MANDATORY pre-bid conference and shall remain in attendance for the duration of the conference. Any prospective bidder who fails to attend the conference or remain for the duration shall be prohibited from submitting a bid for the project.
2. Attendance to this pre-bid conference is optional. However, failure to attend the pre-bid conference shall not relieve the bidder of responsibility for information discussed at the conference. Furthermore, failure to attend the pre-bid conference and inspection does not relieve the successful bidder from the necessity of furnishing materials or performing any work that may be required to complete the work in accordance with the specification with no additional cost to the owner.
3. Contractor must hold current applicable JEFFERSON PARISH licenses with the Department of Inspection and Code Enforcement. Contractor shall obtain any and all permits required by the JEFFERSON PARISH Department of Inspection and Code Enforcement. The contractor shall be responsible for the payment of these permits. All permits must be obtained prior to the start of the project. Contractor must also hold any and all applicable Federal and State licenses. Contractor shall be responsible for the payment of these permits and shall obtain them prior to the start of the project.
4. A LA State Contractor's License will be required in accordance with LSA R.S. 37-2150 et. seq. and such license number will be shown on the outside of the bid envelope. Failure to comply will cause the bid to be rejected. Additionally if submitting the bid electronically, then the license number must be entered in the appropriate field in the Electronic Procurement system. Failure to comply will cause the bid to be rejected.
5. It is the bidder's responsibility to visit the job site and evaluate the job before submitting a bid.
6. Job site must be clean and free of all litter and debris daily and upon completion of the contract. Passageways must be kept clean and free of material, equipment, and debris at all times. Flammable material must be removed from the job site daily because storage will not be permitted on the premises. Precautions must be exercised at all times to safeguard the welfare of JEFFERSON PARISH and the general public.

INSTRUCTIONS FOR BIDDERS AND GENERAL CONDITIONS

7. PUBLIC WORKS BIDS: All awards for public works in excess of \$5,000.00 will be reduced to a formal contract which shall be recorded at the contractor's expense with the Clerk of Court and Ex-Officio Recorder of Mortgages for the Parish of Jefferson. A price list of recordation costs may be obtained from the Clerk of Court and Ex-Officio Recorder of Mortgages for the Parish of Jefferson. All awards in excess of \$25,000.00 will require both a performance and a payment bond. Unless otherwise stated in the bid specifications, the performance bond requirements shall be 100% of the contract price. Unless otherwise state in the bid specifications, the payment bond requirements shall be 100% of the contract price. Both bonds shall be supplied at the signing of the contract.
8. NON-PUBLIC WORKS BIDS: A performance bond will be required for this bid. The amount of the bond will be 100% of the contract price unless otherwise indicated in the specifications. The performance bond shall be supplied at the signing of the contract.
9. NON-PUBLIC WORKS BIDS: A payment bond will be required for this bid. The amount of the bond will be 100% of the contract price unless otherwise indicated in the specifications. The payment bond shall be supplied at the signing of the contract.
10. All bidders must comply with the requirements stated in the attached "Standard Insurance Requirements" sheet attached to this bid solicitation. Prior to contract executions/purchase order issuance, the successful bidder will be required to provide final insurance certificates which shall name Jefferson Parish as an additional insured in accordance with the instructions in the aforementioned "Standard Insurance Requirements" sheet.
11. A bid bond will be required with bid submission in the amount of 5% of the total bid, unless otherwise stated in the bid specifications. Acceptable forms shall be limited to cashier's check, certified check, or surety bid bond. All sureties must be in original format (no copies). If submitting a bid online, vendors must submit an electronic bid bond through the respective online clearinghouse bond management system(s) as indicated in the electronic bid solicitation on Central Auction House. No scanned paper copies of any bid bond will be accepted as part of the electronic bid submission.
12. This is a requirements contract to be provided on an as needed basis. JEFFERSON PARISH makes no representations on warranties with regard to minimum guaranteed quantities unless otherwise stated in the bid specifications.
13. Freight charges should be included in total cost when quoting. If not quoted FOB DELIVERED, freight must be quoted as a separate item. Bid may be rejected if not quoted FOB DELIVERED or if freight charges are not indicated on bid form.
14. PUBLIC WORKS BIDS - Completed, Signed and Properly Notarized Affidavits Required; This applies to all solicitations for construction, alteration or demolition of public buildings or projects, in conformity with the provisions contained in LSA-RS 38:2212.9, LSA-RS 38:2212.10, LSA-RS 38:2224, and Sec 2-923.1 of the Jefferson Parish Code of Ordinances. For bidding purposes, all bidders must submit with bid submission COMPLETED, SIGNED and PROPERLY NOTARIZED Affidavits, including: Non-Conviction Affidavit, Non-Collusion Affidavit, Campaign Contribution Affidavit, Debt Disclosures Affidavit and E-Verify Affidavit. For the convenience of vendors, all affidavits have been combined into one form entitled PUBLIC WORKS BID AFFIDAVIT. This affidavit must be submitted in its original format, and without material alteration, in order to be compliant and for the bid to be considered responsive. A scanned copy of the completed, signed and properly notarized affidavit may be submitted with the bid, however, the successful bidder must submit the original affidavit in its original format and without material alteration upon contract execution. Failure to comply will result in the bid submission being rejected as non-responsive. The Parish reserves the right to award bid to the next lowest responsive and responsible bidder in this event.
15. NON PUBLIC WORK BIDS - Completed, Signed and Properly Notarized Affidavits Required in conformity with the provisions contained in LSA – RS 38:2224 and Sec 2-923.1 of the Jefferson Parish Code of Ordinances. For bidding purposes, all bidders must submit with bid submission COMPLETED, SIGNED and PROPERLY NOTARIZED Affidavits, including: Non-Collusion Affidavit, Debt Disclosures Affidavit and Campaign Contribution Affidavit. For the convenience of vendors, all affidavits have been combined into one form entitled NON PUBLIC WORKS BID AFFIDAVIT. This affidavit must be submitted in its original format, and without material alteration, in order to be compliant and for the bid to be considered responsive. A scanned copy of the completed, signed and properly notarized affidavit may be submitted with the bid, however, the successful bidder must submit the original affidavit in its original format and without material alteration upon contract execution. Failure to comply will result in the bid submission being rejected as non-responsive. The Parish reserves the right to award bid to the next lowest responsive and responsible bidder in this event.
16. The ensuing contract for this bid solicitation may be eligible for FEMA reimbursement and/or Federal funding/reimbursement. As such, the referenced appendix will be applicable accordingly and shall be considered a part of the bid documents. All applicable certifications must be duly completed, signed and submitted with bid submission. Failure to submit applicable certifications with bid submission will result in bid rejection.

It shall be the duty of every parish officer, employee, department, agency, special district, board, and commission: and the duty of every contractor, subcontractor, and licensee of the parish, and the duty of every applicant for certification of eligibility for a parish contract or program, to cooperate with the Inspector General in any investigation, audit, inspection, performance review, or hearing pursuant to Jefferson Parish Code of Ordinances Section 2-155.10(19). By submitting a bid, vendor acknowledges this and will abide by all provisions of the referenced Jefferson Parish Code of Ordinances.

DATE: 10/04/2019

INVITATION TO BID
THIS IS NOT AN ORDER

Page: 4

BID NO.: 50-00128375

JEFFERSON PARISH

PURCHASING DEPARTMENT
P.O. BOX 9
GRETNA, LA. 70054-0009
504-364-2678

VENDOR: 27118 BLANK BID COPY VENDOR

BUYER: RSCOTT

As per LSA-RS 47:301 et seq., all governmental bodies are excluded from payment of sales taxes to any Louisiana taxing body. Quotations shall be based on F.O.B. Agency warehouse or jobsite, anywhere within the Parish as designated by the Purchasing Department.

JEFFERSON PARISH reserves the right to cancel all or any part of an order if not shipped promptly. No charges will be allowed for parking or cartage unless specified in quotation. The order must not be filled at a higher price than quoted. JEFFERSON PARISH reserves the right to cancel at any time and for any reason by issuing a THIRTY (30) day written notice to the contractor.

JEFFERSON PARISH is expecting all products to be new and all work to be done in workman-like manner, according to standard practices. Any deviations or alteration from the specifications must be indicated on the bid form for each item and upon request, product data for same must be submitted by the time specified by the Purchasing Department.

DELIVERY: FOB JEFFERSON PARISH

INDICATE DELIVERY DATE ON EQUIPMENT AND SUPPLIES

45 days

INDICATE STARTING TIME (IN DAYS) FOR CONSTRUCTION WORK

Not Applicable

INDICATE COMPLETION TIME (IN DAYS) FOR CONSTRUCTION WORK

Not Applicable

In the event that addenda are issued with this bid, bidders MUST acknowledge all addenda on the bid form. Bidder must acknowledge receipt of an addendum on the bid form as indicated. Failure to acknowledge any addendum on the bid form will result in bid rejection.

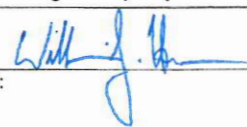
Acknowledge Receipt of Addenda: NUMBER: NONE

NUMBER: _____

NUMBER: _____

NUMBER: _____

LOUISIANA CONTRACTOR'S LICENSE NO.: (if applicable) Not Applicable

*** ALL BIDDERS MUST COMPLETE SECTION BELOW ***	
FIRM NAME: Wastequip Manufacturing Company, LLC	
SIGNATURE: (Must be signed here) 	TITLE: VP-Finance, Commercial
PRINT OR TYPE NAME: William Houser	
ADDRESS: (Bid Location) 841 Meacham Road	
CITY, STATE: Statesville, NC	ZIP: 28677
TELEPHONE: (800) 424-0422 ext 244	FAX: (704) 878-0734
EMAIL ADDRESS: MJenkins@wastequip.com	

TOTAL PRICE OF ALL BID ITEMS: \$ 1,129.00

INVITATION TO BID FROM JEFFERSON PARISH - continued

BID NO.: 50-00128375

SEALED BID

ITEM NUMBER	QUANTITY	U/M	DESCRIPTION OF ARTICLES	UNIT PRICE QUOTED	TOTALS
1	1.00	EA	PURCHASE OF (1) EIGHT CUBIC YARD FRONT LOAD CONTAINER FOR THE JEFFERSON PARISH FIRST PARISH COURT		
			0010 - PURCHASE OF (1) EIGHT (8) CUBIC YARD STANDARD	\$ 867.00	\$ 867.00
2	1.00	EA	DUTY FLAT FRONT LOAD CONTAINER - FLOOR: 10 GAUGE, WALLS: 12 GAUGE WITH HORIZONTAL V-CRIMPS FOR ADDED STRENGTH, DOORS: (2) 30"X30" SLIDING, POCKETS: HEAVY DUTY WITH THREE WAY FORK ENTRY GUIDE, TOP CHANNELS: INTERLOCKING, BOTTOM RUNNERS:2-1/2" TALL FORMED, PRIMED AND PAINTED BLUE MODEL #: 125537, COLOR: BLUE	Wastequip - 10130367	
			NEEDED TO REPLACE TRASH DUMPSTER AT FIRST PARISH COURT.	Customer to offload at time of delivery.	
			ORDERED BY/FOR: E.ROMAIN	Standard Wastequip warranty applies.	
			CONTACT: J.P. GENERAL SERVICES ATTN: ERIC ROMAIN FIRST PARISH COURT 924 DAVID DRIVE METAIRIE, LA 70003 (504)736-6036		
			0020 - SHIPPING FEE	\$ 262.00	\$ 262.00

SUPPLY ONE (1) EIGHT (8) CUBIC YARD STANDARD DUTY FLAT FRONT LOAD CONTAINER

Section 1.0 - Scope:

We extend this bid to cover all, materials, shipping, delivery, and necessary essentials to supply one (1) steel standard duty flat front load containers for the Jefferson Parish First Parish Court building located at 924 David Dr., Metairie Louisiana 70003.

Section 2.0 – Bid Specifications:

- All materials shall be as specified or owner reviewed and approved equal
- All materials shall be bidder supplied new
- Supply and deliver one (1) new 8 cubic yard flat steel container
- Containers shall be delivered to the Jefferson Parish First Parish Court Building located at 924 David Drive, Metairie, La. 70003

Section 3.0 Container Description

- Eight (8) cubic yard standard duty flat front load container:
- Two (2) poly black lids
- Floor: 10 gauge steel.
- Walls: 12 gauge steel.
- Pockets: Heavy Duty with Three Way Fork Entry Guide.
- Interlocking Top Channels with Formed 10 gauge Bottom Runners.
- Primed and Painted Blue.

Section 4.0 – Hours of Delivery:

Delivery shall be scheduled during normal working hours Monday thru Friday 7:30 a.m. to 3:30 p.m.

Section 5.0 – Warranty:

One year paint warranty.



1261 W. Industrial Park Rd. NW, Brookhaven,
MS, 39601

PHONE: 601-835-0922 FAX: 601-835-5036

WQ-10130340

Sell To:

Contact Name	Eric Romain	Ship To Name	Jefferson Parish
Bill To Name	Jefferson Parish	Ship To	924 David Drive
Bill To	200 Derbigny St Fl 4 Gretna, LA 70053-5850 USA		Metairie, LA 70003 USA
Email	eromain@jeffparish.net		
Phone	(504) 736-6043 / 504-736-6036		

Quote Information

Salesperson	Steve Hurtt	Created Date	9/20/2019
Salesperson Email	shurtt@wastequip.com	Expiration Date	10/31/2019
Salesperson Phone	(469) 853-7729	Quote Number	WQ-10130340
			Please Reference Quote Number on all Purchase Orders

Bid No: 50-00128375

Model	Product Description	Selected Option	Description	Quantity	Sales Price	Total Price
125537	8 Cubic Yard Standard Duty Flat Front Load Container - Floor: 10 gauge, Walls: 12 gauge with Horizontal V-Crimps for Added Strength, Doors: (2) 30"x 30" Sliding, Pockets: Heavy Duty with Three Way Fork Entry Guide, Top Channels: Interlocking, Bottom Runners: 2 1/2" Tall Formed, Primed and Painted Any Standard Color - Standard Wastequip warranty applies	Color: TBD-Standard Color	CUSTOMER TO OFFLOAD AT TIME OF DELIVERY FORKLIFT RECOMMENDED	1.00	\$867.00	\$867.00

Payment Terms	Net 30 Days if credit has been established	Subtotal	\$867.00
Shipping Terms	FOB Origin	Shipping	\$262.00
		Tax	\$0.00
		Grand Total	\$1,129.00

Additional Information

Additional Terms Our Quote is a good faith estimate, based on our understanding of your needs. Subject to our acceptance, your Order is an offer to purchase our Products and services in accordance with the Wastequip Terms & Conditions of Sale ("WQ T&C") located at: <https://www.wastequip.com/terms-conditions-of-sale>, as of the date set forth in Section 1(b) of the WQ T&C, which are made a part of this Quote. These WQ T&Cs may be updated from time to time and are available by hard copy upon request.

Additional Information Pricing is based on your anticipated Order prior to the expiration of this Quote, including product specifications, quantities and timing. Any differences to your Order may result in different pricing, freight or other costs. Due to volatility in petrochemical, steel and related Product material markets, actual prices and freight, are subject to change. We reserve the right, by providing notice to you at any time before beginning Product manufacturing, to increase the price of the Product(s) to reflect any increase in the cost to us which is due to any factor beyond our control (such as, without limitation, any increase in the costs of labor, materials, or other costs of manufacture or supply). Unless otherwise stated, materials and container sizes indicated on sales literature, invoices, price lists, quotations and delivery tickets are nominal sizes and representations – actual volume, Products and materials are subject to manufacturing and commercial variation and Wastequip's practices, and may vary from nominal sizes and materials. All prices are in US dollars; this Quote may not include all applicable taxes, brokerage fees or duties. If customer is not tax exempt, final tax calculations are subject to change.

Signatures

Accepted By: _____



1261 W. Industrial Park Rd. NW, Brookhaven,
MS, 39601

PHONE: 601-835-0922 FAX: 601-835-5036

WQ-10130340

Company Name: _____

Date: _____

Purchase Order: _____

Please Reference Quote Number on all Purchase Orders

FRONT END LOAD CONTAINERS



Steel Front End Load (FEL) Containers

Wastequip Front End Load Containers (FELs) are engineered using heavy gauge steel to withstand the stress of continued use. Standard models feature 12 gauge sides and 10 gauge bottoms, high density polyethylene lids and fully welded in-seams. Our heavy duty models have 10 gauge sides and 7 gauge bottoms for added strength and durability.

Containers are primed inside and outside to reduce corrosion. Wastequip containers meet ANSI safety specifications and dimensional standards for haulers. With locations throughout North America, Wastequip can meet your container needs quickly.

Styles: Flat, slant, hatchback and nestable (slant and flat)

Sizes: 2, 3, 4, 6, 8, and 10 cubic yards



FEATURES

1) FORK POCKETS:

- 3-way flared fork pockets protect from damage by the trucks forks and easily guides forks into the pockets
- Taco gussets welded to the bottom of the fork pockets help extend pocket life by providing added strength to the bottom of the pockets
- Fully welded pockets at critical stress points reduce fork damage and ensure long service life

2) CONSTRUCTION:

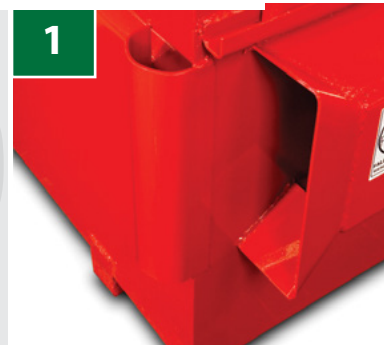
- Rounded bumper pads help prevent damage to the front of the container
- Floor channels are capped at both ends to prevent debris from getting inside and extend up the front and back walls to create extra support

2) CONSTRUCTION (CONT'D):

- Fully welded no-step gusset across the top of the fork pocket provides added safety and support
- Top edges are rounded and smooth for added safety during customer loading
- Interlocking top channel frame provides added strength
- Primed inside and outside to reduce corrosion
- Painted in one of several standard colors
- Nestable 2, 3 & 4 yard containers reduce shipping costs and required storage space

3) LIDS:

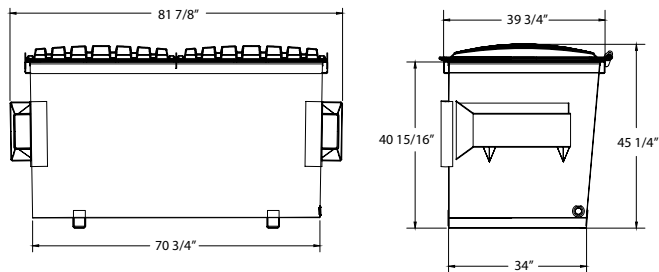
- Single wall, double lip lids ensure durability
- Optional lids upon request



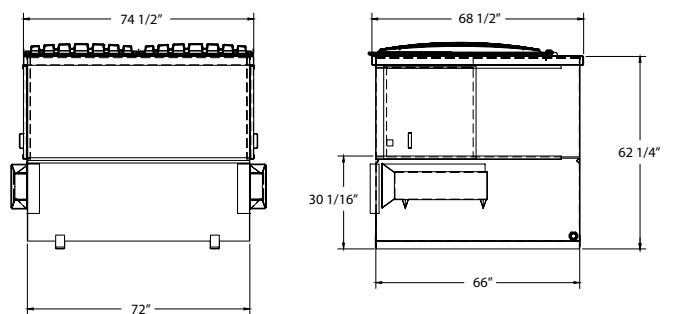
FRONT END LOAD CONTAINERS

FLAT TOP

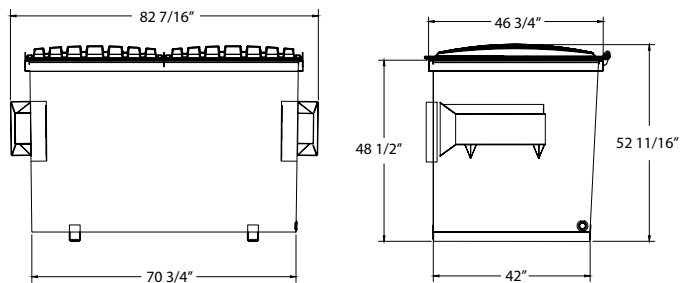
2 YARD FLAT NESTABLE



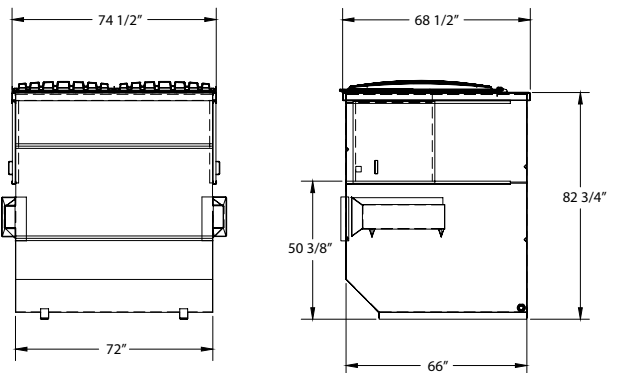
6 YARD FLAT



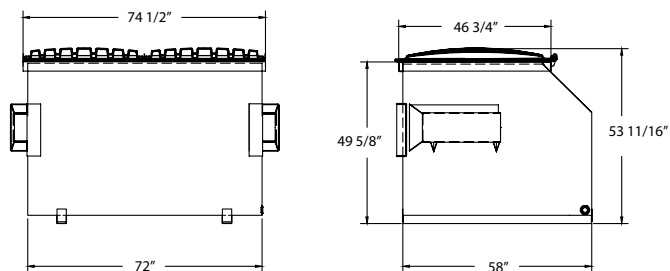
3 YARD FLAT NESTABLE



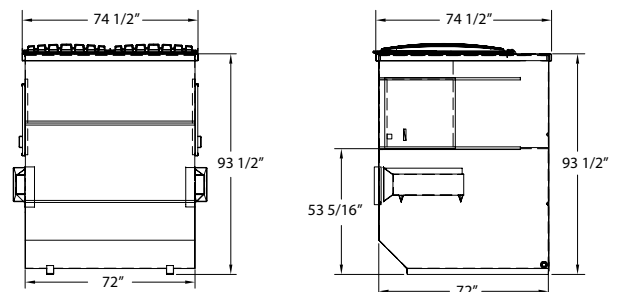
8 YARD FLAT



4 YARD FLAT



10 YARD FLAT



	2 YARD*	3 YARD*	4 YARD	6 YARD	8 YARD	10 YARD
48 ft. trailer flat / drop	42 / 52	28 / 36	18 / 18	8 / 14	8 / 8	7 / 7
53 ft. trailer flat / drop	45 / 57	32 / 42	20 / 20	9 / 16	9 / 9	8 / 8
Plastic lid standard	37" x 41" single wall	37" x 48" single wall	37" x 48" single wall	37" x 58" single wall	37" x 58" single wall	37" x 58" single wall
Sides	12 gauge	12 gauge	12 gauge	12 gauge	12 gauge	12 gauge
Bottom	10 gauge	10 gauge	10 gauge	10 gauge	10 gauge	10 gauge
Weight	505 lbs.	602 lbs.	732 lbs.	971 lbs.	1,110 lbs.	1,543 lbs.

* Nestable

WASTEQUIP, LLC

WASTEQUIP PRODUCT LIMITED WARRANTIES, DISCLAIMERS OF WARRANTIES, LIMITATION OF LIABILITIES AND REMEDIES, AND LIMITED WARRANTY PERIODS

Wastequip warrants only Products of its manufacture, sold by Wastequip, or by a Wastequip authorized distributor, for normal and intended use and service and for specific periods against operational failure caused by proven defective material or workmanship. Wastequip's obligations under this warranty are limited to the repair, replacement or credit, as hereinafter provided at its option, of such Product and/or parts and components thereof. For Products (including parts and/or components) manufactured or supplied by other parties (including but not limited to engines, motor vehicles, special equipment, accessories, tires and fittings), Wastequip shall endeavor to provide such third-party manufacturer warranties, as applicable and to the extent such warranty is transferrable or assignable. All express or implied warranties are limited to those expressly provided herein; and Wastequip makes no other warranty or other duty of its own on any Product, including those warranted by any such third party, and expressly disclaims and does not obligate itself to any warranty on any Product, unless it delivers to Buyer a separate written certificate specifically warranting the Product. Buyer's must complete a Product Warranty Registration Form, where applicable (retaining a copy for Buyer's records) and provide proof of purchase or ownership.

Specific warranty periods are listed herein. Repair or replacement does not extend the warranty beyond the original period, and repaired or replaced parts are warranted for the balance of the original warranty period for the original part. Some states do not allow limitations on how long an implied warranty lasts, the exclusion or limitation of incidental or consequential damages, and any such limitations will conform these Wastequip warranties thereto (Buyers may also have other specific rights which vary from state to state).

Wastequip does not warrant or make any representations concerning Product when the Product is not installed and/or used in strict accordance with good installation, service and maintenance practices or operating instructions. Wastequip does not warrant Product that has been altered, disassembled or re-designed; improperly installed, serviced, maintained, handled or repaired; combined with unapproved non-Wastequip products without Wastequip authorization; contaminated with or exposed to oil, grease, water (including salination), chemicals or solvents; damaged or fails to perform as a result of accident, acts of God, lack of reasonable and proper protection during storage or use, overheating, negligence, misuse, vandalism, loading or exceeding the manufacturer's rated or recommended capacity; damage from automated grasper; in contravention of specifically excluded use or any other unauthorized use other than originally intended, authorized, instructed or beyond the control of Wastequip. This warranty does not apply to normal operating costs and adjustments, including but not limited to adjusting pressure settings, limit switches, timers, relays, fuses, loss of hydraulic oil, cable or filter replacement or normal cosmetic or mechanical wear and tear. Wastequip does not warrant any used Products, which are sold "as is" unless otherwise expressly noted by Wastequip. Further, Wastequip does not warrant any Products that have had serial numbers removed, altered or defaced. Wastequip shall have no liability for any special, punitive, incidental, liquidated or consequential damages, including but not limited to loss of profits, damages to other parts or equipment, cost of capital or interest, any claim for authorized labor charges incurred in diagnosing or replacing a defective Product, towing charges, travel costs, meals, lodging, telephone charges, fuel, storage, loss of use, loss of hydraulic oil, unauthorized repairs, or injury to person or property, to the maximum extent allowable under applicable law. If Wastequip, without separate compensation therefore, furnishes Buyer, Buyer's customer or end user with advice or other assistance concerning any Product or equipment in which the Product may be installed, the furnishing of such advice or assistance will not subject Wastequip to any liability whether in contract, tort (including negligence and strict liability) or otherwise. If any sample, model or demonstration was shown to or provided Buyer, such sample, model or demonstration merely illustrates the general type and quality of Product, and is not to be construed as a representation. If Wastequip authorizes any labor costs associated herewith, such will be solely in accordance with Wastequip established labor rates. Authorization for repairs or related work on Products other than at a Wastequip facility or authorized service center must be through prior written consent by Wastequip; failure to obtain such prior consent shall void this warranty. All claims for reimbursement must be filed with proper documentation no later than forty-five (45) days after occurrence. Travel time approved in advance by Wastequip for authorized service work is limited to two (2) hours maximum per service call.

As the exclusive remedy, in accordance with the Wastequip Terms and provided such Product is manufactured by Wastequip and deemed by Wastequip to be defective, Wastequip shall, at its sole option (i) repair or replace the defective Product, parts or component(s) thereof at our factory or elsewhere (in our discretion); (ii) provide Buyer with a credit on its account in an amount equal to the original purchase Price of the defective Product; and/or (iii) require that Buyer tender any such claims to the third party manufacturer or supplier of the Product, as applicable, upon which Wastequip may endeavor to assist Buyer or Buyer's customer in resolution. Wastequip will accept warranty claims only from the Buyer or in the event of Buyer's resale, redistribution, installation or other similar action, unless otherwise noted, from Buyer's customer, end user or third party that directly purchased the Product through a legitimate action. Wastequip reserves the right to examine all Product to determine whether or not the warranted Product qualifies for the exclusive remedy set forth in these Wastequip Terms. No benefits or remedies are available under this limited warranty while the Invoice for the Product remains outstanding.

In any action brought against Wastequip, regardless of the form or forum, Wastequip shall not be liable to Buyer, end user, customer or any third party for special, consequential, incidental, liquidated or punitive damages and, under no circumstances shall any award against Wastequip in favor of Buyer, end user, customer or any third party exceed the amount paid to Wastequip by Buyer for the Product, to the extent allowed by law. Wastequip shall not indemnify Buyer, end user, customer or any third party from potential claims by or against a third party manufacturer or supplier. Further, Wastequip shall not indemnify Buyer, Buyer's customers, end users or any third party against any claims, including but not limited to product liability claims or workers compensation claims. The parties agree that the foregoing remedy is reasonable and does not cause the Wastequip's Terms to fail of its essential purpose.

In the event of Buyer's resale, redistribution, installation or other similar action of any of the Products sold hereunder, in whatever form unless otherwise expressly notified by Wastequip, Buyer shall merely and solely pass the applicable Wastequip limited warranties herein on to Buyer's customer, end user or third party, as applicable, but make no warranty on its own binding Wastequip, third party manufacturer or supplier or any others, and shall notify such purchaser, customer, end user or third party of these Wastequip Terms and disclaimer of any Wastequip warranty, in writing or otherwise.

Buyer and Buyer's customers, end users or third parties assume all risk and liability for loss or damage resulting from the handling, use, storage, disposal or application of the Products delivered hereunder. Further, Buyer and as applicable, Buyer's customers, end users or third parties shall defend, indemnify and hold harmless Wastequip (and Wastequip's parent company, its subsidiaries, affiliates, successors or assigns and their respective directors, officers, shareholders and employees, individually and collectively "Indemnified Parties") against any and all claims, demands, judgments, loss, injury, death, damage, liability, deficiency, actions, interest, award, penalty, fine, cost or expense, including reasonable attorney and professional fees and costs, and the cost of enforcing any right to indemnification hereunder and the cost of pursuing any insurance providers arising out of or occurring in connection with the Products purchased from Wastequip and involving Buyer's and/or Buyer's customers', end users', or third parties' acts, omissions, negligence, misconduct, breach of Wastequip's Terms; or relating to a breach or non-fulfillment of any representation, warranty or covenant under this Agreement by Buyer or Buyer's personnel; or alleging or relating to any bodily injury, death of any person or damage to real or tangible personal property caused by the acts or omissions of Buyer or its personnel and/or Buyer's customers, end users, or third parties; or relating to a purchase of a Product by any person or entity purchasing directly or indirectly through Buyer and not directly relating to a claim of Limited Warranty breach; or relating to any failure by Buyer or its personnel and/or Buyer's customers, end users, or third parties to comply with any applicable laws or regulations. The right of Indemnified Parties to be indemnified and held harmless under the foregoing shall not be exclusive, but shall be in addition to any and all other rights and remedies to which Indemnified Parties may be entitled under this Agreement or otherwise.

Buyer and/or Buyer's customers, end users, or third parties agree to familiarize itself and keep informed (without reliance on Wastequip) with regards to any hazards to persons and/or property involved in handling, use, storage, disposal or application of the Products. Buyer and/or Buyer's customers, end users, or third parties shall advise its employees,

WASTEQUIP, LLC

customers, independent contractors and others who handle, use, store, dispose or apply such Products of any such hazards. Buyer and/or Buyer's customers, end users, or third parties represent and warrant that the Products sold by Wastequip will not be used in connection with any applications where failure or malfunction could create a situation in which personal injury or death is likely to, or could occur.

THESE LIMITED AND CONDITIONAL WARRANTIES ARE EXCLUSIVE AND IN LIEU OF ALL OTHER WRITTEN OR UNWRITTEN, EXPRESS OR IMPLIED REPRESENTATIONS, SPECIFICATIONS, WARRANTIES AND REMEDIES, HEREIN OR ELSEWHERE, OR WHICH MAY ARISE UNDER LAW OR EQUITY, OR PURSUANT TO ANY COURSE OF DEALING OR CUSTOM OR USAGE OF TRADE, AND WASTEQUIP EXPRESSLY DISCLAIMS ANY EXPRESS OR IMPLIED WARRANTY OF MERCHANTABILITY AND OF FITNESS FOR A PARTICULAR, SPECIFIED OR INTENDED PURPOSE OR USE OF THE PRODUCT, EXCEPT FOR WARRANTY OF TITLE. THERE ARE NO WARRANTIES, EXPRESSED OR IMPLIED, WHICH EXTEND BEYOND THE SEPARATE WRITTEN WARRANTY REFERENCED ON THE FACE HEREOF. NON-PAYMENT SIXTY (60) DAYS PAST THE DATE OF AN INVOICE MAY VOID WARRANTY. DETERMINATION OF THE SUITABILITY OF THE PRODUCT COVERED BY THIS AGREEMENT FOR THE USE CONTEMPLATED BY THE BUYER OR BUYER'S CUSTOMERS IS THE SOLE RESPONSIBILITY OF THE BUYER IN CONNECTION THEREWITH; BUYER ASSUMES ALL RISK AND LIABILITY FOR LOSS, DAMAGE OR INJURY ARISING OUT OF OR RELATING TO THIS AGREEMENT, INCIDENT TO THE USE OR POSSESSION OF THE PRODUCT FURNISHED UNDER THIS AGREEMENT, OR THE SUPPLYING OF PRODUCTS TO BUYER OR ANY SERVICES PROVIDED TO BUYER, ANY THIRD PARTY RIGHTS IN THE PRODUCTS OR ANY USE OF THE PRODUCTS OR THE RESULTS OR DECISIONS MADE OR OBTAINED BY USERS OF THE PRODUCTS, EVEN IF WASTEQUIP HAS BEEN ADVISED OF THE POSSIBILITY OF SUCH DAMAGES.

BUYER'S AND/OR BUYER'S CUSTOMERS', END USERS' OR THIRD PARTIES' SOLE AND EXCLUSIVE REMEDY AGAINST WASTEQUIP SHALL BE THE REMEDY OF DEFECT IN PRODUCT DELIVERED HEREUNDER AS PROVIDED BY, AND WITHIN THE TIME PERIOD SPECIFIED IN WASTEQUIP'S LIMITED WARRANTY SET FORTH HEREIN. WASTEQUIP'S LIMITED WARRANTY CONSTITUTES THE SOLE REMEDY OF BUYER AND BUYER'S CUSTOMERS, END USERS OR THIRD PARTIES, AS APPLICABLE WITH RESPECT TO OR ARISING OUT OF THE EQUIPMENT, PRODUCT OR SERVICES OF WASTEQUIP, WHETHER BASED ON CONTRACT, MANUFACTURER, SALE, ALTERATION, USE, REPAIR, REPLACEMENT, TORT (INCLUDING NEGLIGENCE AND STRICT LIABILITY), OR OTHERWISE, NOTWITHSTANDING ANY OTHER PROVISIONS HEREOF, IN NO EVENT SHALL WASTEQUIP BE LIABLE TO BUYER, BUYER'S CUSTOMER, END USER OR THIRD PARTY, WHETHER ARISING UNDER PERFORMANCE OF THE WASTEQUIP TERMS (OF WHICH THIS LIMITED AND CONDITIONAL WARRANTY IS A PART), OR BREACH OF SUCH TERMS, OR MANUFACTURE, SALE, ALTERATION, USE, REPAIR, REPLACEMENT, TORT (INCLUDING NEGLIGENCE AND STRICT LIABILITY OR OTHERWISE), FOR LOSS OF ANTICIPATED PROFITS, LOST SALES, INJURY TO PERSONS OR PROPERTY, LOSS BY REASON OF PLANT SHUTDOWN, NON-OPERATION, FORCE MAJEURE OR INCREASED EXPENSE OF OPERATION, SERVICE INTERRUPTIONS, CLAIMS OF CUSTOMERS, END USERS OR THIRD PARTIES OF BUYER AND BUYER'S CUSTOMERS', END USERS' OR THIRD PARTY'S COST OF MONEY, LOSS OF USE OF CAPITAL OR REVENUE, OR FOR ANY SPECIAL, INCIDENTAL, PUNITIVE OR CONSEQUENTIAL LOSS OR DAMAGES OF ANY KIND WHATSOEVER.

LIMITED WARRANTY PERIODS

Wastequip Manufacturing Company Products

The warranty period for all Wastequip Manufacturing Company Products manufactured and provided by Wastequip Manufacturing Company or a Wastequip Manufacturing Company authorized distributor is for a period of twelve (12) months from date of shipment from the Wastequip Manufacturing company designated shipping point, unless otherwise specifically indicated as follows:

- Self-Contained Compaction Equipment
 - 255HD, 265X, SC1 and SC2 – 3 years structural, 2 years parts, 1 year labor; all dates from date of shipment from the Wastequip designated shipping point
 - 265XP, 265 XPHT, and 265IP – 5 years structural, 2 years parts, 1 year labor; all dates from date of shipment from the Wastequip designated shipping point
 - 365XSEE – 3 years structural, 3 years parts, 1 year labor; all dates from date of shipment from the Wastequip designated shipping point
 - All Other Self-Contained Models – 3 years structural, 1 year parts and labor; all dates are from date of shipment from Wastequip designated shipping point
 - For the first 3 months, Wastequip will provide normal operating adjustments for pressure settings, limit switches, timers, relays or fuses.
- Standard Compaction Equipment with Solid State Controller
 - Precrushers, Transfer and Mini-Transfer Stations – 1 year structural, parts and labor; all dates from date of shipment from the Wastequip designated shipping point
 - All other Stationary Compactor Models – 3 year structural, 1 year parts and labor; all dates from date of shipment from the Wastequip designated shipping point
- Steel Containers – 12 months from date of shipment from the Wastequip designated shipping point.
- Vertical Baler with Solid State Controller
 - 12 months structural, parts and labor from original date of installation or fifteen (15) months from date of shipment from the Wastequip designated shipping point, whichever occurs first.
 - For the first 3 months, Wastequip will provide normal operating adjustments for pressure settings, limit switches, timers, relays or fuses.
- Vertical Compactor
 - 12 months structural, parts and labor from original date of installation or fifteen (15) months from date of shipment from the Wastequip designated shipping point, whichever occurs first.
 - For the first 3 months, Wastequip will provide normal operating adjustments for pressure settings, limit switches, timers, relays or fuses.



CERTIFICATE OF LIABILITY INSURANCE

DATE (MM/DD/YYYY)
03/28/2019

THIS CERTIFICATE IS ISSUED AS A MATTER OF INFORMATION ONLY AND CONFERS NO RIGHTS UPON THE CERTIFICATE HOLDER. THIS CERTIFICATE DOES NOT AFFIRMATIVELY OR NEGATIVELY AMEND, EXTEND OR ALTER THE COVERAGE AFFORDED BY THE POLICIES BELOW. THIS CERTIFICATE OF INSURANCE DOES NOT CONSTITUTE A CONTRACT BETWEEN THE ISSUING INSURER(S), AUTHORIZED REPRESENTATIVE OR PRODUCER, AND THE CERTIFICATE HOLDER.

IMPORTANT: If the certificate holder is an **ADDITIONAL INSURED**, the policy(ies) must have **ADDITIONAL INSURED** provisions or be endorsed. If **SUBROGATION IS WAIVED**, subject to the terms and conditions of the policy, certain policies may require an endorsement. A statement on this certificate does not confer rights to the certificate holder in lieu of such endorsement(s).

PRODUCER Aon Risk Services South, Inc. Charlotte, NC Office 1111 Metropolitan Avenue, Suite 400 Charlotte NC 28204 USA	CONTACT NAME:	
	PHONE (A/C. No. Ext): (866) 283-7122	FAX (A/C. No.): (800) 363-0105
INSURED HPCC Parent, Inc. & Subsidiaries (see addendum) 6525 Morrison Blvd Suite 300 Charlotte, NC 28211 USA	E-MAIL ADDRESS:	
	INSURER(S) AFFORDING COVERAGE	
	INSURER A: Phoenix Insurance Company	NAIC # 25623
	INSURER B: Travelers Property Casualty Company of America	25674
	INSURER C: The Travelers Indemnity Company	25658
	INSURER D:	
INSURER E:		
INSURER F:		

COVERAGES**CERTIFICATE NUMBER:****REVISION NUMBER:**

THIS IS TO CERTIFY THAT THE POLICIES OF INSURANCE LISTED BELOW HAVE BEEN ISSUED TO THE INSURED NAMED ABOVE FOR THE POLICY PERIOD INDICATED. NOTWITHSTANDING ANY REQUIREMENT, TERM OR CONDITION OF ANY CONTRACT OR OTHER DOCUMENT WITH RESPECT TO WHICH THIS CERTIFICATE MAY BE ISSUED OR MAY PERTAIN, THE INSURANCE AFFORDED BY THE POLICIES DESCRIBED HEREIN IS SUBJECT TO ALL THE TERMS, EXCLUSIONS AND CONDITIONS OF SUCH POLICIES. LIMITS SHOWN MAY HAVE BEEN REDUCED BY PAID CLAIMS.

INSR LTR	TYPE OF INSURANCE	ADDL INSD	SUBR WVD	POLICY NUMBER	POLICY EFF (MM/DD/YYYY)	POLICY EXP (MM/DD/YYYY)	LIMITS
A	<input checked="" type="checkbox"/> COMMERCIAL GENERAL LIABILITY <input type="checkbox"/> CLAIMS-MADE <input checked="" type="checkbox"/> OCCUR GEN'L AGGREGATE LIMIT APPLIES PER: <input checked="" type="checkbox"/> POLICY <input type="checkbox"/> PRO-JECT <input type="checkbox"/> LOC <input type="checkbox"/> OTHER:			660-7K478289-PHX-19	04/01/2019	04/01/2020	EACH OCCURRENCE \$ 1,000,000 DAMAGE TO RENTED PREMISES (Ea occurrence) \$ 300,000 MED EXP (Any one person) \$ 5,000 PERSONAL & ADV INJURY \$ 1,000,000 GENERAL AGGREGATE \$ 2,000,000 PRODUCTS - COMP/OP AGG \$ 2,000,000 \$
B	<input checked="" type="checkbox"/> AUTOMOBILE LIABILITY <input checked="" type="checkbox"/> ANY AUTO <input type="checkbox"/> OWNED AUTOS ONLY <input type="checkbox"/> SCHEDULED AUTOS <input type="checkbox"/> HIRED AUTOS ONLY <input type="checkbox"/> NON-OWNED AUTOS ONLY			TJ-CAP-2H529070-TIL-19	04/01/2019	04/01/2020	COMBINED SINGLE LIMIT (Ea accident) \$ 2,000,000 BODILY INJURY (Per person) \$ BODILY INJURY (Per accident) \$ PROPERTY DAMAGE (Per accident) \$ \$
B	<input checked="" type="checkbox"/> UMBRELLA LIAB <input checked="" type="checkbox"/> OCCUR <input type="checkbox"/> EXCESS LIAB <input type="checkbox"/> CLAIMS-MADE <input type="checkbox"/> DED <input checked="" type="checkbox"/> RETENTION \$ 10,000			ZUP-71N95164-19-NF	04/01/2019	04/01/2020	EACH OCCURRENCE \$ 2,000,000 AGGREGATE \$ 2,000,000 \$
C B	WORKERS COMPENSATION AND EMPLOYERS' LIABILITY ANY PROPRIETOR/PARTNER/EXECUTIVE OFFICER/MEMBER EXCLUDED? (Mandatory in NH) If yes, describe under DESCRIPTION OF OPERATIONS below	Y / N <input checked="" type="checkbox"/> N	N / A	UB-8L984942-19-51-R (AZ, MA, WI) UB-8L986321-19-51-K (AOS)	04/01/2019 04/01/2019	04/01/2020 04/01/2020	<input checked="" type="checkbox"/> PER STATUTE <input type="checkbox"/> OTH-ER E.L. EACH ACCIDENT \$ 1,000,000 E.L. DISEASE - EA EMPLOYEE \$ 1,000,000 E.L. DISEASE - POLICY LIMIT \$ 1,000,000

DESCRIPTION OF OPERATIONS / LOCATIONS / VEHICLES (ACORD 101, Additional Remarks Schedule, may be attached if more space is required)

CERTIFICATE HOLDER**CANCELLATION**

EVIDENCE OF INSURANCE

SHOULD ANY OF THE ABOVE DESCRIBED POLICIES BE CANCELLED BEFORE THE EXPIRATION DATE THEREOF, NOTICE WILL BE DELIVERED IN ACCORDANCE WITH THE POLICY PROVISIONS.

AUTHORIZED REPRESENTATIVE

Aon Risk Services South, Inc.

© 1988-2015 ACORD CORPORATION. All rights reserved.



ADDITIONAL REMARKS SCHEDULE

Page ____ of 2

AGENCY Aon Risk Services South, Inc.		NAMED INSURED HPCC Parent, Inc. & Subsidiaries
POLICY NUMBER		
CARRIER	NAIC CODE	EFFECTIVE DATE: 04/01/2019

ADDITIONAL REMARKS

THIS ADDITIONAL REMARKS FORM IS A SCHEDULE TO ACORD FORM,

FORM NUMBER: Acord 25 **FORM TITLE:** Certificate of Liability Insurance

CURRENT LEGAL ENTITIES

HPCC Parent, Inc.
HPCC Intermediate, Inc.
Patriot Container Corp.
Patriot Container Intermediate, LLC
Patriot Container Acquisition Corp.
Wastequip, LLC
Toter, LLC
Cusco Fabricators, LLC
WQD, LLC
Parts Place, LLC
Wastequip Manufacturing Company LLC
Toter International I LLC
Toter International II LLC
Galbreath LLC
Amrep Manufacturing Company, LLC

PRIOR LEGAL ENTITIES

Wastequip, Inc.
Toter, Incorporated
Toter, Inc.
Cusco Fabricators, Inc.
Galbreath, Inc.
WQD, Inc.
Parts Place, Inc.
Wastequip Manufacturing Company Inc.
Big Dumpster Acquisitions, Inc.
Big Dumpster Holdings, Inc.
Accurate Industries, Inc.

DBAs

Parts Place
Go To Parts
Wastequip Manufacturing Company
Wastequip Manufacturing
Galbreath
Accurate Industries
Accurate
Accurate of Ohio
Accurate of Canada
Pioneer
Mountain Tarp
Wastequip Oregon
Wastequip Tennessee
Wastequip Indiana
Wastequip Accurate
Wastequip Texas
Wastequip May Mfg Co
May Manufacturing and Distribution Corp.
Wastequip DBA Florida Can
May Manufacturing
May Fabrication
May Fabricators
May-Fab
Mayfab
Mayfab - Waste Equipment
Wastequip/Mayfab
May Properties
Holt
Holt Industries
Holt Specialty Equipment
Wastequip Mfg Co dba Industrial Refuse Sales

Request for Taxpayer Identification Number and Certification

► Go to www.irs.gov/FormW9 for instructions and the latest information.

Give Form to the
requester. Do not
send to the IRS.

Print or type. See Specific Instructions on page 3.	1 Name (as shown on your income tax return). Name is required on this line; do not leave this line blank. Wastequip Manufacturing Company, LLC	
	2 Business name/disregarded entity name, if different from above	
	3 Check appropriate box for federal tax classification of the person whose name is entered on line 1. Check only one of the following seven boxes. <input type="checkbox"/> Individual/sole proprietor or single-member LLC <input checked="" type="checkbox"/> Limited liability company. Enter the tax classification (C=C corporation, S=S corporation, P=Partnership) ► C Note: Check the appropriate box in the line above for the tax classification of the single-member owner. Do not check LLC if the LLC is classified as a single-member LLC that is disregarded from the owner unless the owner of the LLC is another LLC that is not disregarded from the owner for U.S. federal tax purposes. Otherwise, a single-member LLC that is disregarded from the owner should check the appropriate box for the tax classification of its owner. <input type="checkbox"/> Other (see instructions) ►	4 Exemptions (codes apply only to certain entities, not individuals; see instructions on page 3): Exempt payee code (if any) _____ Exemption from FATCA reporting code (if any) _____ <small>(Applies to accounts maintained outside the U.S.)</small>
	5 Address (number, street, and apt. or suite no.) See instructions. (Corporate Location) 6525 Morrison Boulevard, Suite 300	Requester's name and address (optional)
	6 City, state, and ZIP code Charlotte, NC 28211	
	7 List account number(s) here (optional)	

Part I Taxpayer Identification Number (TIN)

Enter your TIN in the appropriate box. The TIN provided must match the name given on line 1 to avoid backup withholding. For individuals, this is generally your social security number (SSN). However, for a resident alien, sole proprietor, or disregarded entity, see the instructions for Part I, later. For other entities, it is your employer identification number (EIN). If you do not have a number, see *How to get a TIN*, later.

Note: If the account is in more than one name, see the instructions for line 1. Also see *What Name and Number To Give the Requester* for guidelines on whose number to enter.

Social security number								
			-					
or								
Employer identification number								
2	2		-	3	1	9	1	6 2 4

Part II Certification

Under penalties of perjury, I certify that:

- The number shown on this form is my correct taxpayer identification number (or I am waiting for a number to be issued to me); and
- I am not subject to backup withholding because: (a) I am exempt from backup withholding, or (b) I have not been notified by the Internal Revenue Service (IRS) that I am subject to backup withholding as a result of a failure to report all interest or dividends, or (c) the IRS has notified me that I am no longer subject to backup withholding; and
- I am a U.S. citizen or other U.S. person (defined below); and
- The FATCA code(s) entered on this form (if any) indicating that I am exempt from FATCA reporting is correct.

Certification instructions. You must cross out item 2 above if you have been notified by the IRS that you are currently subject to backup withholding because you have failed to report all interest and dividends on your tax return. For real estate transactions, item 2 does not apply. For mortgage interest paid, acquisition or abandonment of secured property, cancellation of debt, contributions to an individual retirement arrangement (IRA), and generally, payments other than interest and dividends, you are not required to sign the certification, but you must provide your correct TIN. See the instructions for Part II, later.

Sign
Here

Signature of
U.S. person ►

William Houser, VP-Finance, Commercial Date ► 09/04/2019

General Instructions

Section references are to the Internal Revenue Code unless otherwise noted.

Future developments. For the latest information about developments related to Form W-9 and its instructions, such as legislation enacted after they were published, go to www.irs.gov/FormW9.

Purpose of Form

An individual or entity (Form W-9 requester) who is required to file an information return with the IRS must obtain your correct taxpayer identification number (TIN) which may be your social security number (SSN), individual taxpayer identification number (ITIN), adoption taxpayer identification number (ATIN), or employer identification number (EIN), to report on an information return the amount paid to you, or other amount reportable on an information return. Examples of information returns include, but are not limited to, the following.

- Form 1099-INT (interest earned or paid)

- Form 1099-DIV (dividends, including those from stocks or mutual funds)
- Form 1099-MISC (various types of income, prizes, awards, or gross proceeds)
- Form 1099-B (stock or mutual fund sales and certain other transactions by brokers)
- Form 1099-S (proceeds from real estate transactions)
- Form 1099-K (merchant card and third party network transactions)
- Form 1098 (home mortgage interest), 1098-E (student loan interest), 1098-T (tuition)
- Form 1099-C (canceled debt)
- Form 1099-A (acquisition or abandonment of secured property)

Use Form W-9 only if you are a U.S. person (including a resident alien), to provide your correct TIN.

If you do not return Form W-9 to the requester with a TIN, you might be subject to backup withholding. See What is backup withholding, later.