



Design and Construction of
**TEMPORARY
INMATE HOUSING**

Orleans Parish Criminal
Sheriff's Office

.....

Response to Request for
Letter of Interest
February 17, 2010



woodward design+build

February 17, 2010

Mr. John Sens
Orleans Parish Criminal Sheriff's Office
2614 Tulane Avenue
New Orleans, LA 70119

RE: Response to Request for Letter of Interest
SUBJECT: Design and Construction of Temporary Inmate Housing

Dear Mr. Sens:

On behalf of Woodward Design+Build and our project team, we are very excited to present our Letter of Interest package. Please accept this letter as an introduction to Woodward Design+Build and the team we have assembled to deliver the Orleans Parish Prison's Temporary Inmate Housing.

- **Woodward Design+Build** (Woodward) will serve as the Design/Build Entity for this project. We have been in the design and construction business in Southeast Louisiana since 1924. Our approach to design build is one that has been perfected over the last 85 years. We offer our clients the combined experience and talents of our in-house architects, engineers, and contractors. Working as a team in this approach provides our clients with the knowledge to support the design phase and improves the purchasing and construction phases.
- **Moses Engineers, Inc.** (Moses) will serve as our team's mechanical, electrical and plumbing engineering consultant. Moses Engineers provides sustainable, engineering designs in the mechanical, electrical, plumbing, fire protection, telecommunications disciplines to architects, owners, developers, contractors and government agencies in need of quality engineering services for commercial and institutional buildings.
- **L. Dow Oliver & Associates, Inc.** (Dow), a professional architectural corporation, will serve as our team's prison design consultant and will provide the team with conceptual designs on the Temporary Inmate Housing facility. L. Dow Oliver established the practice in 1967, and has specialized in the design and development of detention and correctional facilities throughout Southeast Louisiana for over 30 years.

Thank you for the opportunity to submit our Letter of Interest and examples of the type of work that we have performed in the past and what capabilities we can perform for you. As you review our team information, please don't hesitate to call if we can provide you with any additional materials.

I look forward to talking with you in the near future.

Sincerely,

William D. Hoffman
Senior Vice President



LICENSING 1

EXPERIENCE 2

REFERENCES 3

PLANNING 4

DBE PROGRAM 5

LICENSING

1.1 COMPANY LICENSES

WOODWARD DESIGN+BUILD

Woodward will serve as the Design/Build Entity for this project. We have been in the design and construction business in Southeast Louisiana since 1924 as well as a licensed Louisiana General Construction Contractor.

John F. Dalton, AIA, LEED AP is a Senior Architect in Woodward Design Group and will serve as Architect of Record for the Temporary Inmate Housing. John is a licensed architect in the state of Louisiana and will be responsible for reviewing and stamping drawings, as well as managing the project architects through the design process. John's qualifications are listed in Section 2.2 Personnel Experience.

Johann Palacios, P.E., LEED AP, is the manager of Woodward Engineering Group. He will provide the structural design on this project and coordinate with the rest of the design team.

PROFESSIONAL LICENSES

Louisiana General Contractor License #424

Carl E. Woodward, LLC

(See Attached Certificate)

Louisiana Architectural License #5957

John F. Dalton, AIA, LEED AP

Louisiana Civil Engineering License #31315

Johann Palacios, PE, LEED AP

State of Louisiana



State Licensing Board for Contractors

This is to Certify that:

CARL E. WOODWARD LLC
P O Box 13547
New Orleans, LA 70185

is duly licensed and entitled to practice the following classifications

BUILDING CONSTRUCTION



Expiration Date: October 27, 2012

License No: 424

Witness our hand and seal of the Board dated,
Baton Rouge, LA 1st day of January 2009

Willard M. M. M.
Director

Ben E. Jell
Chairman

Willard M. M. M.
Secretary-Treasurer

MOSES ENGINEERS, INC.

Moses will serve as our team's mechanical and electrical engineering specialist. The firm will provide mechanical, electrical engineering consulting services for Woodward Design+Build on this project. All senior design personnel are registered professional engineers.

PROFESSIONAL LICENSES

Louisiana Mechanical Engineering License # 23721

Theobald Wan, Lead Mechanical Engineer, P.E.,
LEED AP

Louisiana Electrical Engineering License # 16249

Lenny Zimmermann, Senior Electrical Engineer,
P.E., LEED AP

Louisiana Electrical Engineering License # 25417

Mike Nixon, Electrical Engineer, P.E., LEED AP

L. DOW OLIVER & ASSOCIATES, INC.

L. Dow Oliver & Associates, is a professional architecture corporation and will serve as our team's prison design consultant. Dow will provide the team with conceptual designs on the Temporary Inmate Housing facility. L. Dow Oliver established his practice 1967, and has over 30 years experience in the design and development of detention and correctional facilities throughout southeast Louisiana.

Professional Licenses

Louisiana Architectural License #852

L. Dow Oliver, AIA

EXPERIENCE

2.1 THE WOODWARD ADVANTAGE



THE WOODWARD ADVANTAGE

Clients choose Woodward Design+Build (Woodward) - and return with their future projects - for our unmatched combination of capacity, performance, and commitment. We are a respected leader in the integrated design-build delivery method. That's the Woodward advantage, and it is built on a number of factors.

History

Founded in 1924, Woodward is a privately held firm based in New Orleans with additional offices and facilities on the Northshore of Lake Ponchartrain and in Mississippi. We have a reputation for quality and reliability built on success after success for our clients. Today, we are one of the largest design and construction organizations in the Gulf Coast region. We continue to expand, innovate, and improve the services we offer.

The key advantage Woodward offers is our ability to craft the right project management team for the Orleans Parish Criminal Sheriff's Office. The key member of our team is always the client. Our process always incorporates the client's goals and objectives right from the start. The results are successful buildings, satisfied customers, and strong, valuable relationships for the future.

Woodward's history goes back four generations, but we believe our reputation is only as good as our last project. We are committed to total client satisfaction and we are driven to make each project a success.

In-House Divisions and Groups

Woodward's approach to project management utilizes a wealth of capabilities and resources located within our firm, including comprehensive planning, design and engineering, total quality management, site supervision, and document management, all united by professionalism and construction expertise every step of the way. Our in-house specialized groups include the Design Group, Engineering Group, Steel Group, Millwork Group, and Service Group.

Woodward Design Group is the in-house architectural arm of Woodward Design+Build. Our architects are experts at the integrated design build process, and know how to translate it into effective projects. Woodward Engineering Group offers in-house engineering services such as structural, civil and BIM. Our Steel Group provides in-house capacity for fundamental building elements and offers a wide array of services from structural steel erection, pre-

cast and tilt-up erection, sheet metal fabrication and installation, to complete steel building systems. Woodward has a relationship of over 55 years with Butler Manufacturing, and are experts in providing Butler Building Systems for a variety of project types. Woodward Millwork Group has built a reputation as the leading provider of custom millwork in our region, enriching the largest projects with the quality of master craftsmanship. Woodward Service Group offers our clients a quick response team for building maintenance, minor repairs, annual building inspections and more.

The capabilities of these specialized groups give Woodward an intimate understanding of all phases of the building process. The capabilities of these specialized groups is what makes Woodward Design+Build the most capable firm to provide project management services to the Orleans Parish Criminal Sheriff's Office.

Project Team

As previously stated, Woodward Design+Build is a respected leader in the integrated design-build approach. We are very excited to have both L. Dow Oliver & Associates, Inc. (Oliver) and Moses Engineers, Inc. (Moses) on our team. Woodward has worked with Moses on a number of design build projects, including the City of New Orleans Mosquito, Termite and Rodent Control Center. In addition, Moses Engineers has worked previously for the Orleans Parish Criminal Sheriff's Office, and has the necessary experience to excel at this project. Oliver brings over 30 years of correctional facilities' design experience to the team. In addition, he has worked with the Orleans Parish Criminal Sheriff's Office on multiple projects. We feel that the combination of integrated design build experience, metal building experience, specialized in-house groups such as Woodward Design Group and Woodward Steel Group, experience in correctional facilities design, experience working with the Orleans Parish Criminal Sheriff's Office, and a proven track record of successful projects throughout the City of New Orleans offers an unmatched team for this project.

Safety

Woodward understands that accidents are prevented through careful planning, training, and cooperative efforts in all areas of our operations. Woodward has developed



a culture that promotes an injury-free environment and provides the safest workplace possible for our employees, subcontractors, clients, and others who enter or who are near our construction sites. In an industry where safety can not only save lives but will ensure that a company remain competitive and respected by its competitors, clients, and own employees, Woodward has not only adapted to the ever changing construction industry, but has pushed safety to the forefront of the company. This has been accomplished by constantly evaluating our safety program and its training requirements in jobsites, offices and facilities. This constant evaluation of the work environment is not just provided by senior leadership, but everyone that is an employee of Woodward. This is how a new “safety culture” has been established, which is evident in both everyday work functions and safety practices. Woodward’s underlying strength can be contributed to two key functions, which are training and management support. Woodward has recently taken safety one step further by creating a more prominent safety atmosphere. It is now mandatory for all levels of management to complete the OSHA 10 Hour certification. This makes Woodward stand out in the construction industry by ensuring that supervision has the knowledge to provide the best possible work environment for all of their employees and subcontractors.

A good indicator of how important safety is to Woodward can be shown in our own experience modifier rate, “EMR”. We have consistently maintained an EMR rating of under .76 for the last five years and our EMR for 2009 was .68.

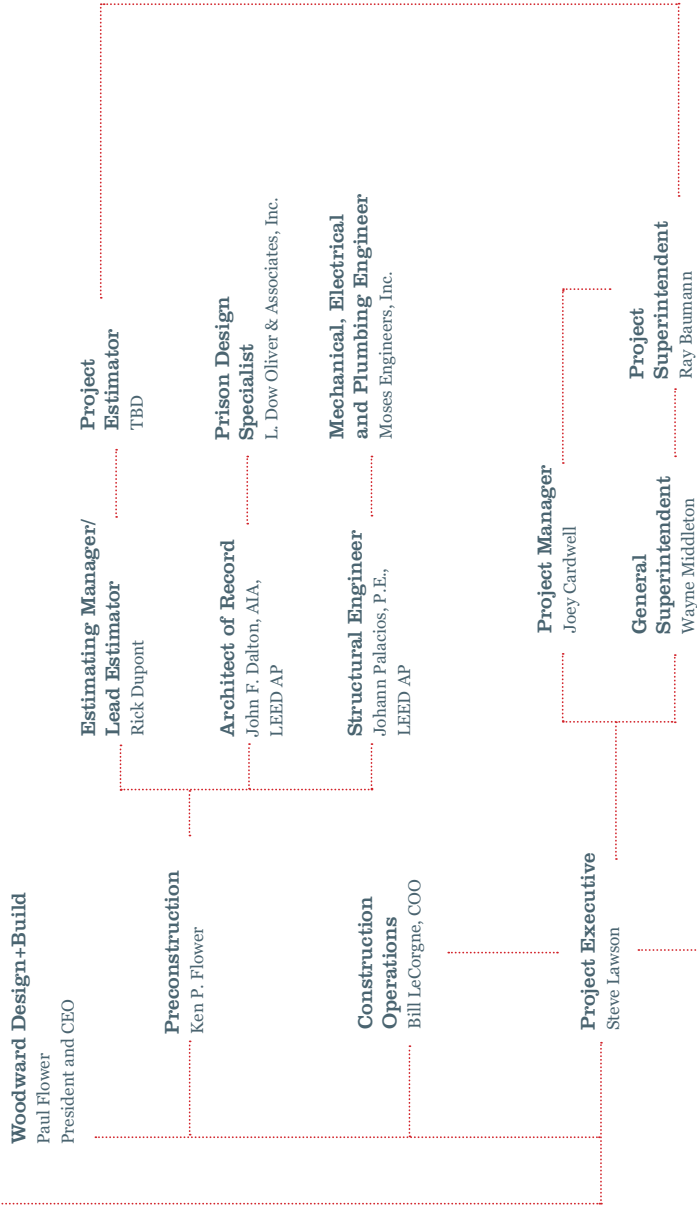
Financial Strength

As previously stated, Woodward was founded in 1924, and has a long history of success. Woodward has an extremely strong balance sheet and no debt. As a strong indicator of Woodward’s financial strength, Woodward has a bonding capacity in excess of \$300,000,000.

To request additional information, financial statements or insurance and bonding information, please contact Terry McCubbin, Chief Financial Officer at (504) 822-6443.

2.2 KEY PERSONNEL EXPERIENCE

Orleans Parish
Criminal Sheriff's Office



KEY

Paul Flower, President and CEO, will have an open door policy establishing a direct line of communication for the Orleans Parish Criminal Sheriff's Office. Paul stays informed of the construction progress through attending our in-house weekly preconstruction and estimating meetings.

Bill LeCorgne, Chief Operating Officer, also monitors the preconstruction and construction progress through our in-house weekly preconstruction and estimating meetings. He also holds monthly cost, schedule, and quality control project meetings.

As the Project Executive, Steve Lawson will be the single point of contact to the Orleans Parish Criminal Sheriff's Office for all matters related to this project. As Project Executive, Steve will have a direct line of communication with the Preconstruction Team.

Rick Dupont, Lead Estimator, Steve Lawson, Project Executive and Joey Cardwell, Project Manager make our core preconstruction team. They will work closely with our design team to produce conceptual and detailed estimating, building systems analysis, value analysis and life cycle analysis, constructability reviews, and design alternatives. In addition, this team will provide contract proposals, cash flow projections, trade prequalification and solicitation, and will manage the purchasing / buyout phase of the project.

John Dalton, AIA, LEED AP, Architect of Record, will lead the design efforts for the Temporary Inmate Housing. He will review conceptual designs from L. Dow Oliver & Associates, Inc. as well as consult with them on development of detention facilities. John will also coordinate with Woodward Engineering Group for structural design and Moses Engineers, Inc. on mechanical, electrical and plumbing design.

Jimmy Wingerter, VP of Construction Resources, will work with our preconstruction team to provide site logistics, scheduling input, and plan and coordinate all construction field resources.

Wayne Middleton, General Superintendent and Ray Baumann, Project Superintendent, will be responsible for day to day construction activities, coordinating subcontractors, scheduling of materials, manpower needs and equipment.



WOODWARD DESIGN+BUILD

PAUL H. FLOWER, P.E.

PRESIDENT & CEO

PRIOR EXPERIENCE

Paul has worked in the construction and engineering fields since 1967. Prior to joining Woodward Design + Build, in 1970, Paul worked for Robert E. McKee General Contractors, Inc. in Atlanta, GA.

EDUCATION

Paul received his Bachelor of Civil Engineering from Georgia Institute of Technology in 1968. He went on to attend the Tulane University, receiving a Master of Engineering degree in 1975.

He holds a professional engineering license in Louisiana. He holds construction licenses in Louisiana, Arkansas, Mississippi, Florida, and Alabama.

PROFESSIONAL ORGANIZATIONS

Paul is a member of ASCE, ACI, AISC, Vistage, and the Urban Land Institute. He is past president of the Associated Builders and Contractors and past board member of LABI and Trinity Episcopal School. He has also been active in United Way as Group Chairman for construction and industry, and active in other educational groups and charities, such as the Juvenile Diabetes Research Foundation (JDRF). In 2004, Paul served as Corporate Recruitment Chairperson for JDRF's annual Walk for a Cure. Presently, Paul serves on the Dean's Advisory Board for Tulane University's School of Science and Engineering and is a member of the Business Council of New Orleans and the River Region.

PROFESSIONAL EXPERIENCE

Prior to his present role, Paul served in numerous positions as a Structural Designer, Project Manager, Estimator and Project Executive during his years with our firm. These projects encompass medical, commercial, industrial, historic restoration and multi-unit residential facilities. In 2004, Paul formed Woodward Interests, a real-estate development company. Woodward Interests has been responsible for the development of several large commercial projects in New Orleans.



WOODWARD DESIGN+BUILD

KEN FLOWER

SENIOR MANAGER

Ken joined Woodward Design+Build (WDB), in September 2001, as an Assistant Project Manager. He was soon promoted to Project Manager and has managed several different types and size projects. Ken is currently a Senior Manager within the company in Preconstruction, Design, and Business Development. In addition to serving on WDB's Executive Management Team, his other responsibilities include overseeing many functions of information systems with the company and he has developed and implemented a company wide Water/Moisture Intrusion Management and Prevention program.

PRIOR EXPERIENCE

Ken has worked in the construction industry full time since 1997. Prior to joining WDB, Ken worked for Holder Construction Company, Atlanta, Georgia, on projects in Birmingham, Alabama, Washington, D.C., and Charlotte, North Carolina. As a Project Engineer, he was primarily responsible cost management, subcontractor coordination, and field support on all projects he worked on.

EDUCATION

Ken received his Master of Construction Science Management from Clemson University and his Bachelor of Science from Tulane University. While attending Clemson University, Ken was assigned a Graduate Assistantship working directly with the National Center for Construction Education and Research. Ken received his Masters of Business Administration from the University of New Orleans in December 2005. Ken has completed training from the US Green Building Council in LEED for New Construction and Major Renovation Technical Review and Commission LEED for New Construction Projects.

PROFESSIONAL ORGANIZATIONS

The Green Project - Board of Directors
Council on Alcohol and Drug Abuse for the Greater New Orleans Area - Board of Directors
Committee for Better New Orleans / MAC
Alumni Leadership Forum Group
Saint Charles Avenue Presbyterian Church - Property Committee Member, Communities Ministries Committee Member

PROJECT EXPERIENCE

Tulane University Environmental Science Building

61,000 SF, 6 Story, New Construction
New Orleans, Louisiana

Harrah's Hotel

28 Story Hotel, Convention, Meeting Space
New Orleans, Louisiana

Marriott Convention Center Hotel

331 Room, Fourteen Story Hotel
New Orleans, Louisiana

Dillard Professional Schools Building

LEED Gold 127,000 SF Multi Purpose
New Orleans, LA

Tulane Theater and Dance

25,000 SF, 3 Story, New Construction
New Orleans, LA

Fleur du Lac Condominiums

30 Unit Seven Story New Construction
Metairie, Louisiana

Bourbon Orleans Hotel

151,000 SF Historic/Hurricane Restoration
New Orleans, Louisiana

Borders Bookstore

LEED Certified Historic Renovation into Retail
New Orleans, Louisiana

521 Tchoupitoulas Apartments

Historic Renovation
New Orleans, Louisiana

Whitney Wyndham Hotel

63,000 SF Historic and Hurricane Restoration
New Orleans, Louisiana



WOODWARD DESIGN+BUILD

RICHARD DUPONT, P.E.

MANAGER OF ESTIMATING

Rick joined Woodward Design+Build in 1990 as Manager of Estimating responsible for estimates produced by his department. The Estimating department provides services for Woodward Design+Build's major projects. Services provided include conceptual estimating, bidding, scheduling, value analysis and maintenance of subcontractor and estimating databases.

PRIOR EXPERIENCE

Rick has worked in the construction industry since 1979. Prior to joining Woodward Design+Build, Rick worked for McDevitt and Street, Charlotte, NC, as a Regional Senior Estimator. His responsibilities included preparing conceptual estimates, proposals and bids on hotels, hospitals, churches, retail centers, parking garages, warehouses, office buildings, restaurants and university laboratory facilities in Charlotte, NC; Washington D.C.; Raleigh, NC; Atlanta, GA; and Florida, ranging up to \$120,000,000. Rick's prior experience also includes 5 years estimating and project management on government projects in Norfolk and Newport News, Virginia.

EDUCATION

Rick received his Bachelor of Science in Civil Engineering in 1979 from Old Dominion University, in Norfolk, VA, 24 credit hours toward a Master's degree in Civil Engineering at the University of New Orleans, and 30 hours toward a Master of Business Administration. His specialized construction education includes legal, scheduling, estimation, project management, and concrete seminars. He is registered as a Professional Engineer in the state of Virginia.

PROFESSIONAL EXPERIENCE

Since joining Woodward Design+Build, Rick has been responsible for estimating and value analysis on educational facilities, athletic facilities, broadcasting facilities, control buildings, distribution facilities, hospitals, hotels, office buildings, retail, laboratory facilities and renovations, ranging from \$80,000 to \$120,000,000.

PROFESSIONAL EXPERIENCE

Orleans Parish Criminal Sheriff's Office

New kitchen-warehouse plant
New Orleans, Louisiana

Federal City

New Headquarters for Marine Forces Reserve
Algiers, Louisiana

WDSU TV

New Construction of TV Broadcast Facility
New Orleans, Louisiana

Marriott Convention Center Hotel

331 Room, Fourteen Story Hotel
New Orleans, Louisiana

Harrah's Hotel

28 story hotel
New Orleans, LA

Tulane Univeristy

Environmental Science Building
New Orleans, LA

Intralox Manufacturing

Mulitple projects
Harahan, Louisiana

The Esplanade Apartments

Renovation of 440 unit apartment building
New Orleans, Louisiana

Dillard University

International Center for Economic Freedom
New Orleans, Louisiana

Delgado Community College

Student Life Center
New Orleans, Louisiana

Fleur du Lac Condominiums

30 unit condominium
New Orleans, Louisiana



WOODWARD DESIGN GROUP

JOHN DALTON, AIA, LEED AP

ARCHITECT OF RECORD

PRIOR EXPERIENCE

John has experience in all aspects of design and construction, including project management and estimating. He has practiced as a design build architect since 2000, and has experience in designing and building all types of construction, including historic renovations and additions. John designed and built his own house in 2006.

EDUCATION

John received a Bachelors degree in Art from Rhodes College in Memphis, TN in 1996. In 1999, he received his Master of Architecture degree from Tulane University in New Orleans, LA as well as the AIA Certificate of Merit for Excellence in the Study of Architecture. In 2008 John was certified as a LEED Accredited Professional.

PROJECT EXPERIENCE

Belleville Assisted Living

Historic conversion of medical office to assisted living facility
Algiers, Louisiana

Benson Tower

Tenant improvement to existing 17-story office building
New Orleans, Louisiana

City of New Orleans

Mosquito, Termite and Rodent Control Center
First Design-Build project for City of New Orleans
New Orleans, Louisiana

Louisiana Army National Guard - 141st

Readiness Center and Central Plant
Designed to LEED Standards
New Orleans, Louisiana

Borders Books

Project Combined Historic Preservation and New Construction for New Retail Location
New Orleans, Louisiana

Fisk Office Building

New Office and Warehouse Facility
St. Charles Parish, LA

Redemptorists Apartment Buildings 1,2 and 3

Renovation of Multi-Family Housing
New Orleans, LA

Redemptorists Seelos Welcome Center

Renovation of Visitor Center
New Orleans, LA

Tulane University

Hurricane Katrina Campus Restoration
New Orleans, LA

Dillard University

Hurricane Katrina Hurricane Restoration
New Orleans, LA

Dillard University - Hartzel & Camphor

Hall Interior Build-Out
New Orleans, LA

Dillard University - Henson Hall

Renovations
New Orleans, LA

Girod St. Parking Garage Addition

New Orleans, LA



L. DOW OLIVER & ASSOCIATES, INC.

L. DOW OLIVER, AIA, NCARB, CSI

PRISON DESIGN CONSULTANT

L. Dow Oliver is the President of L. Dow Oliver & Associates, Inc., a professional architectural corporation that has been specializing in the design and development of detention and correctional facilities throughout southeast Louisiana.

PRIOR EXPERIENCE

L. Dow Oliver joins the project team for the Orleans Parish Prison's Temporary Inmate Housing facility with over 40 years of design experience in the institutional, educational, commercial and industrial sectors.

EDUCATION

Masters of Architecture, Tulane University, 1960

PROFESSIONAL ORGANIZATIONS

Past President, Louisiana Architects Assoc., New Orleans, Chapter, American Institute of Architects
Past Chairman, Architectural Selection Board for State of Louisiana
Director, Louisiana Architects Association
Member, Construction Specifications Institute
Member, Louisiana Institute of Building Sciences
Member, American Correctional Association
Member, National Criminal Justice Association
Member, ASTM, Standing Committee
Member, Committee on Architecture for Justice

PROJECT EXPERIENCE

ST. BERNARD JAIL COMPLEX

240 Man Jail, 24 Juveniles
\$ 6,600,000

ST. TAMMANY PARISH

Phase I Jail Addition, 100 Man Dorm
\$ 950,000

CITY OF NEW ORLEANS

Jail Renovation, 240 Man Dorm
\$ 2,000,000

TULANE AVENUE FACILITY

Retrofit 100 Cells, 200 Dorms
\$ 3,200,000

ORLEANS PARISH PRISON

Phase I Expansion, 800 Man Dorm
\$ 5,000,000

ORLEANS PARISH PRISON

Phase II Expansion, 900 Man Dorm
\$ 7,000,000

ORLEANS PARISH PRISON EXPANSION, PHASE 3

Phase III Expansion, 1200 Man Cells
\$23,000,000

ORLEANS PARISH PRISON EXPANSION, PHASE 5

Phase V Expansion, 296 Man Cells
\$ 8,000,000

VOLUNTEERS OF AMERICA

Half Way House for Federal Offenders
\$ 1,500,000

ORLEANS PARISH PRISON

New Booking Facility
\$ 2,700,000

ORLEANS PARISH PRISON

New Kitchen Facility
\$ 7,800,000

PEARL RIVER CORRECTION CENTER

New 410 Man Cell/Dorm Facility
\$ 6,500,000



WOODWARD ENGINEERING GROUP

JOHANN L. PALACIOS, P.E., LEED AP

CIVIL/STRUCTURAL ENGINEERING

PRIOR EXPERIENCE

As a registered engineer intern from 2000 to 2004, Johann has gained experience in numerous aspects of structural engineering, ranging from new buildings to renovations and additions of repeat clients. Since 2004, Johann has been CEW's lead in-house civil / structural engineer and in 2007, he became the division manager for the Woodward Engineering Group.

EDUCATION

Masters in Engineering, Civil Engineering
December 2003
Tulane University, School of Engineering

Bachelor of Science in Engineering, Civil Engineering
May 2000
Tulane University, School of Engineering

Jesuit High School, New Orleans, LA
May 1996

PROFESSIONAL ORGANIZATIONS

Johann is a registered Professional Engineer in Civil Engineering with the Louisiana Professional Engineering & Land Surveying Board. He was secretary for the American Society of Civil Engineers, New Orleans Branch for 2006-2007 and treasurer for 2007-2008.

SELECT PROJECT EXPERIENCE

New Buildings: Walker Volkswagen, Walker Acura, Northshore Volkswagen, Lexus of New Orleans, Labarre Warehouse Phases 1 and 2, Suburban Lodge, Randa Corporation, New Orleans VooDoo Arena Football Training Facility, Praeger Machinery Warehouse and Office, Eric Hill Nissan, Volunteers of America Terraces 6 story building, Fisk Electric Warehouse and Office, and more.

Renovations And Additions: Compass for Kids, Intralox (Campus Wide), Tulane University, University of New Orleans, Leidenheimer Bakery, Bourbon Orleans Hotel, Dr. Tichenor, Magnolia School, New Orleans Saints Training Facilities, Borders Bookstore on St. Charles Avenue, 521 Tchoupitoulas Street Apartments, and more.

DESIGN EXPERIENCE

New Buildings: Pile Supported Foundations, Spread Footing Foundations, Two way slabs, Steel, Concrete, Wood Framing Systems, Cold Formed Stud Design, Paving Design, Fiber Reinforced Concrete, Multistory buildings

Renovations And Additions: Forensic Analysis, Risk Assessment Analysis, Reverse Engineer Analysis, Shoring and Bracing Analysis; Multistory building structural renovations



MOSES ENGINEERS, INC.

W. HOWARD MOSES, LEED AP

MECHANICAL/ELECTRICAL/PLUMBING ENGINEERS

PRIOR EXPERIENCE

Over 20 years experience in designing mechanical and electrical systems for both new and renovated commercial and institutional buildings throughout the Gulf South region.

Second generation owner of Moses Engineers with strong ties to the local real estate, development, and Code making and enforcement officials, Mr. Moses has extensive experience in Performing Arts venues, beginning with the initial phases of the New Orleans (Morial) Convention Center at the start of his career.

Project Manager and Project engineer on over 100 tenant changes in high rise office buildings; Harbor Police Headquarters; 4th Circuit Court of Appeals; \$25 million Aquarium of the Americas Phase II addition; McDermott International Corporate Office move to 13 floors of CNG Tower; McMain Magnet School; House of Blues Restaurant and Nightclub; Whitney Young Pool; Historic N.O. Collection; St. Stephens Church; Slidell Memorial Hospital, MRI; St. Charles Parish PSAP Facility; \$12 million Delgado Classroom Addition; Arnaud's Oyster Bar; Audubon Building Restaurant; 210 Baronne Building Replacement of Cooling Towers and Fire Risers; Andrew Jackson Elementary School Renovations; \$34 million to Tulane University Student Center, Louisiana Artist Guild, \$40 million Astor Hotel.

EDUCATION

Isidore Newman School
B.S.M.E in Mechanical Engineering,
Southern Methodist University, 1986

PROFESSIONAL ORGANIZATIONS

Member, American Society of Heating Refrigeration and Air Conditioning Engineers, ASHRAE
Member, Construction Specifications Institute, CSI
Member, Association of Energy Engineers, AEE
Central Area Committee, 1998 Chairman
Member, New Orleans Area Council Executive Committee of the Chamber
Member, Area Council Coordinating Committee of the Chamber.
NFPA - Member

MOST RECENT PROJECTS

Make-It-Right Foundation
Global Green's USA Holy Cross Project
Stephens Garage
Landry High School
Wilson Elementary
Guste Elementary School
Mahalia Jackson Performing Arts Center
Jefferson Parish Performing Arts Theatre
Gauthier Elementary
Facility Maintenance Shop #12
IDIQ – LANG – Jackson Barracks
BEQ for LANG – Jackson Barracks
DFAC for Camp Minden for LANG
(2) BEQ for LANG at Camp Minden
Lakewood Country Club
La. Institute of Film & Technology Film Factory
Maritime Office Building
5th Circuit Court of Appeals Renovation
Conversion of Municipal Auditorium into \$38 million Casino
Reconversion of Municipal Auditorium back into auditorium/Ice Hockey Rink
Aquarium of the Americas, Phase II
Hale Boggs Federal Office Building New Orleans, LA
F. Edward Hebert Federal Office Building
Tulane U. Renovation of Jones Hall
Audubon Institute (6 separate projects)
U.S. Custom House
New Orleans Sports Arena
New Orleans Center for Creative Arts (NOCCA)
Tulane University Willow St. Dormitory
Tulane University Central Plant Modifications
National D-Day Museum
Louisiana Artist Guild
Contemporary Arts Center Cyber Café
Sheraton Hotel, New Orleans
Lucayan Beach Resort, Freeport, Bahamas
Navy Information Technology Center, UNO



MOSES ENGINEERS, INC.

LENNY ZIMMERMAN, P.E., LEED AP

MECHANICAL/ELECTRICAL/PLUMBING ENGINEERS

PRIOR EXPERIENCE

Mr. Zimmermann has more than 30 years of experience in the design and construction of mechanical and electrical systems. His previous work includes a broad range of projects domestically and internationally, including: high-rise urban mixed-use, high-technology corporate facilities, sports stadiums, medical centers, hotels, academia, and government projects.

He has worked on some of the largest and most challenging projects, establishing engineering concepts, selecting systems, and ensuring quality as the projects move through the design and productions phases. In addition to being Senior Vice President, he was also the Director of New Business Development. As such, he is a point of contact for multiple clients.

He has been involved in the design of over 25,000 inmate beds for Correctional Facilities. This experience includes county jails and state prisons, ranging from minimum to maximum security facilities. He won two national awards, the Edwin Guth Lighting Design of Merit and the Edison Award of Distinction, for his work for the California Department of Corrections.

A degreed and registered engineer, Mr. Zimmermann is licensed in 25 states across the country. He is a member of multiple associations in the industry and is a LEED Accredited Professional.

EDUCATION

BS/Electrical Engineering,
Louisiana State University 1973
LA Professional Engineering Registration No. 16249

PROFESSIONAL REGISTRATIONS

Professional Engineer in LA, ID, RI, TX, VA, IL, AL, ME,
MS, NC, OH, TN, NJ, NY, MA, MT, SC, WA, WI, MD, DC,
CA, GA, NE, FL, CO and Puerto Rico
National Fire Protection Association
National Society of Professional Engineers
Illuminating Engineering Society
Urban Land Institute Society of College and University
Planners
American Society for Hospital Engineering

MOST RECENT PROJECTS

Jefferson County Correctional Facility in Golden, CO
Contra Costa County, CA Courthouse and Jail
Elmwood Correctional Facility, Milpitas, CA
Correctional Center for Women, Milpitas, CA
California Department of Corrections
California Medical Facility
Muscle Creek State Prison
Avenal State Prison
California State Prison
Central California Women's Facility
LIFT Louisiana Media Production Facility, New Orleans, LA
The John Minor Wisdom US Courthouse of Appeals, New Orleans, LA
LSU Tiger Stadium, East Side Addition, Baton Rouge, LA
Tulane University, Infrastructure Upgrade, New Orleans
Our Lady of the Lake Hospital, Baton Rouge, LA
Coates Chemistry Laboratory, Louisiana State Univ., Baton Rouge, LA
Baton Rouge Civic Center, Baton Rouge, LA
Tulane University, New Orleans, LA
Aga Khan University, Faculty of Arts and Sciences
Karachi, Pakistan
Age Khan University, FHS Utility Master Plan, Karachi, Pakistan
Kuala Lumpur City Center, Malaysia
Yale University, Sterling Power Plant, New Haven, CT
New York Times Queens Printing Plant, Queens, NY
JFK International Airport, Thermal Distribution System, Jamaica, NY
11 West 42nd Street, New York, NY
33 Arch Street, Boston, MA



MOSES ENGINEERS, INC.

THEOBALD WAN, P.E., LEED AP

MECHANICAL/ELECTRICAL/PLUMBING ENGINEERS

PRIOR EXPERIENCE

Mr. Wan has practiced mechanical engineering for over thirty years. He specializes in the design and Construction Administration of commercial and industrial projects including witnessing of system performance tests. He has been Moses Engineers' Chief Mechanical Engineer since 2005 and is responsible for Quality Assurance and Control for all projects. His designs represent a practical, energy conservative approach based on Life Cycle Analyses, tailored to specific project requirements and Owner's goals. He has participated in several projects that have received LEED Certification.

EDUCATION

Bachelor in Engineering Science, University of New Orleans, 1975

Seminars and Workshops sponsored by the State of Louisiana, Department of Natural Resources.

MOST RECENT PROJECTS

Youth Study Center Juvenile Detention Center, New Orleans, LA
 Jefferson Parish Prison, Gretna, LA
 Lafourche Parish Detention Center
 Templeman I & II Correctional Facility
 Jefferson Parish Performing Arts Theatre
 Morris F.X. Jeff Sr. Municipal Auditorium – New Orleans, LA
 Fairgrounds Permanent Slots
 Stephens Garage Conversion
 New Orleans Sports Arena
 Second Line Stages
 L.B. Landry High School
 Wilson Elementary School
 St. Bernard Elementary School
 Gauthier Elementary School
 St. Bernard Middle School
 61st Troop Command RC-Jackson Barracks
 IDIQ – Louisiana Air National Guard – Jackson Barracks
 BEQ for Louisiana Air National Guard – Jackson Barracks
 DFAC for Camp Minden for LANG
 AASF #1–Hammond Airport for LANG
 (2) BEQ for Louisiana Air National Guard at Camp Minden

2400 Canal Street

La. Institute of Film Technology's Film Factory

Global Green USA's Holy Cross Project

City of New Orleans Justice Complex

Lakewood Country Club

Facility Maintenance Shop #12 in Slidell

Maritime Office Building

Gauthier Elementary School

Saratoga Office Building

Franklinton High School

Franklinton Elementary School

1418 Esplanade Avenue Condos

St. Tammany Parish Hospital Minor Care

St. Tammany Parish Hospital Radiology

Bruno's Tavern

Franklinton Elementary School

FPIG Corp. Headquarters

Conerstone Homes, River Garden

Resource Bank Center Renovations

Spectrum Control Exhaust Reduction



MOSES ENGINEERS, INC.

MIKE NIXON, P.E., LEED AP

MECHANICAL/ELECTRICAL/PLUMBING ENGINEERS

PRIOR EXPERIENCE

From 1993 to 2000, Mr. Nixon was an Adjunct Instructor of Electrical Engineering at UNO's main campus. Today, in addition to his role at Moses Engineers he is also a Professor in the Electrical-Electronics Engineering Technology Program at Delgado Community College and serves as Department Chairman for all their Technology programs.

Uniquely, Mr. Nixon brings his practical engineering experience to bear in his teaching and, conversely, is able to explain nuances of electrical design to varied audiences of engineers, architects, and building owners.

EDUCATION

UNO, Master of Science in Electrical Engineering, 1989

UNO, BS in Electrical Engineering, 1986

MOST RECENT PROJECTS

Youth Study Center Juvenile Detention Center
 District Attorney's Office
 Templeman I & II Correctional Facility
 Criminal District Courts
 Old Parish Prison
 Municipal & Traffic Court
 NOPD Administration Building
 Mahalia Jackson Theatre of the Performing Arts – New Orleans, LA
 Jefferson Parish Performing Arts Theatre
 La. Institute of Film Technology's Film Factory
 City of New Orleans – Municipal Auditorium
 Guste Elementary School
 Gauthier Elementary School
 L.B. Landry High School
 Wilson Elementary School
 141st Readiness Center at Jackson Barracks
 General Services Administration – Border Patrol
 Lakewood Country Club
 Facility Maintenance Shop #12 in Slidell
 Renovations to City Park from Katrina storm damage
 Lavin-Bernick Center at Tulane University
 Gauthier Elementary School
 City Park Katrina Repairs
 Entergy Projects – Various Building
 61st Troop Command Readiness Center - Jackson Barracks



WOODWARD DESIGN+BUILD

WILLIAM LeCORGNE, JR., P.E.

CHEIF OPERATING OFFICER

PRIOR EXPERIENCE

Bill has been in the design-build construction industry since 1982. Prior to re-joining Carl E. Woodward, LLC, Bill worked for Danis Industries Corporation in Orlando, Florida. His responsibilities included project management and estimating for projects such as Westinghouse, Brinks, Oakhill Village Shopping Center and Cypress Park (various commercial projects). While attending Tulane University, Bill worked as an assistant to the Director of Construction and Engineering on the Bell/Halter (Textron Marine) indoor ship building facility (152,000 sf) for the Navy's Air Cushion Landing Craft (LCAC) in eastern New Orleans.

EDUCATION

Bill earned his high school diploma from Metairie Park Country Day High School in Metairie, Louisiana. He attended Tulane University and earned a Civil Engineer degree in 1982. Bill also earned his Master of Engineering degree from Tulane University majoring in Civil Engineering (specializing in both soils and structures). He holds a Professional Engineer license in Louisiana, Florida, Texas, and Mississippi.

Bill attended both the 10 hour and the 30 hour OSHA course in Construction Safety and Health as well as the 14 hour DuPont Safety Training Observation Program (STOP). He participates in Continued Education classes for engineering disciplines.

PROFESSIONAL ORGANIZATIONS

Bill is a member of the American Concrete Institute (ACI) and the American Society of Civil Engineers (ASCE). He was a member of TEC's (The Executive Committee) Key Member Group for ten years. TEC is an organization dedicated to increasing the effectiveness and enhancing the lives of executives.

EXPERIENCE

Shell Oil Company

RCCU Blast Resistant Control Building - 8,000 sf
MTBE Blast Resistant Control Building - 4,000 sf
Norco, Louisiana

Toys "R" Us

Retail Toy Facility - 45,300 sf
New Orleans, Louisiana

Luzianne Coffee Company

Commodity Storage and Tea Blending Facility - 33,456 sf
New Orleans, Louisiana

Benson Mercedes Benz

Automobile Dealership - 60,095 sf
Metairie, LA

New Orleans Saints Training Facility

Athletic facility, offices, grass fields, and artificial field
New Orleans, LA

Laitram Corporation

Digicourse Expansion
Storey Street Machine Shop
Central Plant Renovations
Harahan, Louisiana

Ochsner Hospital

Radiology Department Renovations
New Orleans, Louisiana

Louisiana Superdome

New Level 6, Entrance Gate Renovations, & Heliport
Suite Renovations
New Orleans, Louisiana

Marriott Convention Center Hotel

331 Room, Fourteen Story Hotel
New Orleans, Louisiana

Tulane University

Environmental Science Building
New Orleans, Louisiana

Intralox, Inc.

New Molding Facility For Plastic Manufacturing
Harahan, Louisiana



WOODWARD DESIGN+BUILD

STEVE LAWSON

PROJECT EXECUTIVE / VICE PRESIDENT

Steve joined Woodward Design+Build in October 2007 as Project Executive and Vice President. With this role, he is responsible for numerous commercial and industrial projects.

PRIOR EXPERIENCE

Prior to joining Woodward Design+Build, Steve worked with Walton Construction, Co. as Division Vice President. Steve has over 30 years of experience in the commercial construction industry.

EDUCATION

Steve received his Bachelor of Science degree in Building Design and Construction Engineering from Kansas State University.

PROFESSIONAL EXPERIENCE

Orleans Parish Criminal Sheriff's Office

New Construction of Kitchen-Warehouse Plant
New Orleans, LA

Federal City - Marine Forces Reserve

New Construction of 400,000 square foot facility, \$100M
Algiers, LA

Harrah's Hotel

New Construction of 28 Story Hotel, \$125M
New Orleans, LA

Enlisted Barracks

Worked with Corps of Engineers
Four 3-Story Buildings and Dining Facility
Ft. Hood, TX

New Helicopter Maintenance Hanger

Worked with Corps of Engineers
Ft. Polk, LA

Three Phases of Six Barracks Rehabs

Three separate projects; two buildings each
Worked with Corps of Engineers
Ft. Hood, TX

Corps of Engineers

Three Barracks Rehabs
Fort Hood, TX

Three Airport Projects

Two Air Traffic Control Towers at Houston, TX and Roswell, NM; Tracon Control Building in Dallas, TX
Worked with FAA-DFW

U.S. Border Control Facilities

Three separate projects consisting of a Border Control facility with entry security-related buildings, paving, site work, fencing, truck parking, and x-ray equipment
Laredo, Del Rio, and Brownsville, TX

U.S. Navy Storage Facility

One Project consisting of six igloo-style structures used to store nuclear warheads and ammunitions
Barksdale AFB, LA

U.S. Navy Aircraft Maintenance Hanger

New Construction for C-130 maintenance to be used by Air Force
JBR, Fort Worth, TX

Laketown -Wharf Condos

Three 22-Story Towers; Two 10-Story Parking Garages
Panama City Beach, FL

Tidewater Condos

31-Story Tower; 12-Story Parking Garages
Panama City Beach, FL

Deer Creek Retirement Center

New Construction of Retirement Center, \$17M
Deerfield Beach, FL

Cousins Furniture

New Office and Showroom Complex
Kansas City, MO

Wal Mart

Multiple Store and Distribution Center
Various US Locations



WOODWARD DESIGN+BUILD

JAMES “JIMMY” WINGERTER

VICE PRESIDENT OF CONSTRUCTION RESOURCES

In 1999, Jimmy joined Woodward Design+Build, as a project manager. In 2008, Jimmy was promoted to Vice President of Construction Resources. He has an extensive background in construction and performed well on many jobs of various difficulties showing great attention to detail.

PRIOR EXPERIENCE

Jimmy has worked in the construction industry since 1987. As a project manager, he has extensive knowledge of scheduling, project negotiation, subcontracts and change orders, approving invoices for payment, billing owners for projects in progress, and checking submittals for compliance with plans and specifications. In addition to working general construction projects, he managed the rehabilitation and installation of pedestrian loading bridges for several airlines and airports throughout the United States.

EDUCATION

Jimmy graduated with a Bachelor of Science Degree in Construction from Northwest Louisiana University in May 1985.

PROJECT EXPERIENCE

141st Readiness Center

New Construction of Readiness Center and Central Plant at Jackson Barracks
New Orleans, Louisiana

Dillard University

On and Off Campus Hurricane Restorations
New Orleans, Louisiana

Stuart Hall School for Boys

Gymnasium
New Orleans, Louisiana

Stuart Hall School for Boys

Education Building
New Orleans, Louisiana

New Orleans Credit Union

Hurricane Restorations
New Orleans, Louisiana
Metairie, Louisiana

OByrne Eye Clinic

New Construction
Mandeville, Louisiana

Tulane University

Environmental Science Building
New Orleans, Louisiana

Delgado Community College

Student Life Center
New Orleans, Louisiana

Randa Corp.

New Office and Warehouse
St. Rose, Louisiana

Elmer's Candy Corp.

Chilled Warehouse
Ponchatoula, Louisiana

Fleur du Lac

Condominium Complex
New Orleans, Louisiana

LCR-M -Your "Other" Warehouse

New Warehouse
Baton Rouge, Louisiana

Labarre Warehouse

New Warehouse
New Orleans, Louisiana

Commander's Palace

Patio Room
New Orleans, Louisiana



WOODWARD DESIGN+BUILD

JOSEPH M. CARDWELL

SENIOR PROJECT MANAGER

Joey joined Woodward Design+Build, in May 2004 as an Assistant Project Manager. During his first year, he worked in the Estimating Department. In August of 2005, he was moved to Project Management in which he held the position of Assistant Project Manager. He was promoted in January of 2007 to Project Manager, his current role is Senior Project Manager.

PRIOR EXPERIENCE

Joey has worked in the construction industry since 2000 as an Assistant Project Manager and Estimator. Prior to this, Joey was an Assistant Project Manager for Coastal Fire Protection, LLC.

EDUCATION

Joey received his Bachelor of Science degree in Construction Management from Louisiana State University.

PROJECT EXPERIENCE

Tulane National Primate Research Center

New 17,000 square foot nursing facility building
Covington, Louisiana

The Terraces-Volunteers of America

New 6-Story, 200 unit senior housing development
New Orleans, Louisiana

The Meridian Apartments

4 story concrete and wood frame apartment building
New Orleans, Louisiana

River Garden Historic

Historic renovation consisting of conversion of five existing buildings into town homes
New Orleans, LA

River Garden Elderly

New construction of a 50,000 square foot apartment facility
New Orleans, LA

Perdido Towers

Restoration of existing two 10-story condominium towers which contained 64 units that were totaled from Hurricane Ivan
Perdido Keys, Florida

Fairfield Resorts

Renovation of three existing buildings into time-share apartments
New Orleans, Louisiana

Harrah's Hotel

New construction of 26 story, 4 star hotel
New Orleans, Louisiana

Seismic Exchange

Restoration of two historic buildings
New Orleans, Louisiana

Palace Casino

Addition of new poker room
Biloxi, Mississippi

Juniper Grove Baptist Church

Construction of a new assembly hall
Poplarville, Mississippi



WOODWARD DESIGN+BUILD

WAYNE MIDDLETON

GENERAL SUPERINTENDENT

As General Superintendent, Wayne is the direct coordinator and manager of the superintendents, foreman and other field labor forces. He is responsible for staffing with the VP of Construction Resources, and for assuring that field policies are maintained per company policy. His 35 years of construction experience afford him the ability to manage this group of diverse individuals across a broad spectrum of project types.

PRIOR EXPERIENCE

Wayne has worked in the construction industry since 1973. Wayne first joined Woodward as a carpenter and later worked as a millwork foreman on projects such as Swim & Sport and Zookeeper at the Riverwalk Marketplace. He also worked for T.L. James starting in 1977 in the heavy construction industry. During this time, he worked on projects such as the Luling-Destrehan Bridge, the Nashville Street Wharf, and the Bayou Lamoque flood gates. Wayne co-owned and operated his own millworking business beginning in 1981 before rejoining Woodward in 1984 as a Superintendent.

EDUCATION

Wayne received his high school diploma from Bonnabel High School in Kenner, Louisiana. Wayne has taken ABC courses including Blueprint Reading, Surveying, Estimating, Price Control and Safety.

PROJECT EXPERIENCE

Dillard University Alexander Library

Renovation and modernization of existing library
New Orleans, Louisiana

Dillard University Stern Hall

Renovation and elevator installation of existing science building
New Orleans, Louisiana

Dillard University Lawless Chapel

Renovation and HVAC upgrades
New Orleans, Louisiana

Dillard University Hurricane Restoration

Campus-wide rebuild after Hurricane Katrina
New Orleans, Louisiana

Louisiana Superdome

Renovation to Suites and Terrace Level
New Orleans, Louisiana

Stuart Hall School for Boys

Education Building
New Orleans, LA

Stuart Hall School for Boys

Gymnasium and Classrooms
New Orleans, LA

New Orleans Federal Credit Union

Rebuild after Hurricane Katrina
\$1 million
New Orleans, Louisiana

Metairie Park Country Day

Athletic Facility and Middle School
Metairie, LA

Parc St. Charles Hotel

Renovation of Office Building into 110 room hotel
New Orleans, Louisiana

Dickie Brennan's Steakhouse

Renovation and new construction of first floor of multi-story parking facility into kitchen and restaurant
New Orleans, Louisiana

Palace Cafe

Interior renovation of retail building to restaurant
New Orleans, Louisiana

Compass Furniture

Renovation to existing showroom
Metairie, Louisiana

New Orleans Saints Training Facility

Renovation to original training camp after fire
Metairie, Louisiana



WOODWARD DESIGN+BUILD

RAYMOND P. BAUMANN

SUPERINTENDENT

Ray Bauman joined Woodward Design+Build in January of 2009 as a Project Superintendent. His duties include the daily coordination of the foremen and other field labor forces. His 50 years of construction experience afford him the ability to manage this group of diverse individuals across a broad spectrum of project types.

PRIOR EXPERIENCE

Ray has worked in the construction industry since 1959. Prior to joining Woodward, he worked as Superintendent for Donahue Favret Contractors, Inc. since 1993. He also worked for F.H. Myers Construction Company, Jack Donahue Contractors and Lionel J. Favret Construction Company.

EDUCATION

Ray attended Louisiana State University. He has also completed a number of certifications and seminars including: Red Cross CPR and First Aid, Flatness/Level Tolerances, People Management in Construction, OSHA 10-Hour, EIFS Seminar, Conflict Management and Confrontational Skills Seminar, ABC Leadership II, Water Intrusion and Mold Prevention, and Competent Scaffold Person.

WOODWARD PROJECT EXPERIENCE

CJ Peete Redevelopment

Redevelopment of the former CJ Peete Housing Projects
New Orleans, Louisiana

OTHER PROJECT EXPERIENCE

Our Lady of the Lake School

New Elementary School
Mandeville, Louisiana

St. John Vienna

Church Addition
New Orleans, Louisiana

St. Joseph Hall-Archdiocese of New Orleans

Building Addition
New Orleans, Louisiana

St. Maria Goretti

Construction of Bell Tower
Marrero, Louisiana

St. Michael's Special School

Education Building
New Orleans, LA

St. Pius X

Gymnasium and Classroom Renovation
New Orleans, LA

Our Lady of Perpetual Help

Construction of Church
Belle Chasse, Louisiana

Mary Queen of Vietnam

Church Addition
Metairie, LA

Destrehan High School

New Gym and Campus Additions
Destrehan, Louisiana

Eisenhower School

School Renovation
New Orleans, Louisiana

Episcopal Conference Center

Assembly Center
Loranger, Louisiana

Louisiana Heart Hospital

New Medical Center
Lacombe, Louisiana

Cox Cable Building

New Headquarters
New Orleans, Louisiana

2.3 PAST PERFORMANCE

PERFORMANCE ON PUBLIC PROJECTS

Project Name and Location	Description	Firm Responsibility	Key Personnel	Percentage Complete	Year Completed	Value of Work
Woodward Design+Build						
Mosquito, Termite & Rodent Control Center, New Orleans, LA	New 20,000 square foot office and laboratory facility over parking; first D-B contract awarded by City of New Orleans	Design-Build	John Dalton Rick Dupont	1%	Target-Fall 2010	\$4,600,000
Federal City-Marine Forces Reserve Headquarters, Algiers, LA	New 4-story, 400,000 square foot facility, largest architectural tilt-up project in Gulf Coast Region	Design-Build	Steve Lawson Rick Dupont	19%	Target-Summer 2010	\$105,000,000
United States Custom House, New Orleans, LA	Historic renovation of 4-story government office building	Design-Build	Rick Dupont	100%	August 2009	\$36,000,000
LA Nat'l Guard 141st Readiness Center, Chalmette, LA	New 4-story, 112,000 square foot office building and assembly space, includes central plant, applying for LEED Certification	Design-Build	Jimmy Wingerter John Dalton	100%	October 2009	\$40,100,000
Federal Bureau of Investigation, New Orleans, LA	New four-story building, three floors of office space above a secured parking area	General Contractor	Bill LeCorgne, COO	100%	August 1999	\$16,500,000
Moses Engineers, Inc.						
Templemann I&II Detention Facilities, New Orleans, LA	Complete ground floor restoration and selected upper floors refurbishment	Electrical, Fire Alarm, Plumbing, Elevators and Security Equipment and Communications	Mike Nixon Theobald Wan	100%	2008	\$350,000
New Orleans Youth Study Center Modular Buildings, New Orleans, LA	Complete design for a new 18 cell modular building and new dining kitchen modular building	MEP, Security Detention Systems	Mike Nixon Theobald Wan	100%	2010	\$240,000
House of Detention, New Orleans, LA	Katrina restoration of basement and A/C Design	HVAC and Plumbing	Mike Nixon Theobald Wan	100%	2009	\$40,000
City of New Orleans Old Parish Prison, New Orleans, LA	Complete Katrina Restoration	HVAC, Electrical, Plumbing, Fire Alarm, Architectural, Escalators and Security	Theobald Wan Louis Sosa	100%	2008	\$800,000
L. Dow Oliver & Associates, Inc.						
Orleans Parish Prison Expansion, Phase 3, New Orleans, LA	1,200 man in 2 man cells, two story with mezzanines	Complete Architectural Service	L. Dow Oliver	100%	1993	\$23,000,000
Orleans Parish Prison Expansion, Phase 4 (About Face) New Orleans, LA	One story dorms and classroom capacity 225	Complete Architectural Services	L. Dow Oliver	100%	2000	\$1,800,000
Orleans Parish Prison Expansion Phase 5, New Orleans, LA	Special needs facility capacity 292 in two and four man cells, three stories	Complete Architectural Services	L. Dow Oliver	100%	2002	\$8,000,000
Orleans Parish Prison Expansion, Kitchen	Cook-Chill Facility, Capacity 10,000 inmates, 43,600 square feet	Complete Architectural Services	L. Dow Oliver	100%	1999	\$5,500,000



PERFORMANCE ON PUBLIC PROJECTS

Project Name and Location	Description	Firm Responsibility	Key Personnel	Percentage Complete	Year Completed	Value of Work
L. Dow Oliver & Associates, Inc. (Continued)						
St. Tammany Parish Jail Expansion	Expansion to parish jail, capacity 120 in dorms	Architectural Services	L. Dow Oliver	100%	1989	\$1,000,000
St. Bernard Parish Jail	Parish jail, capacity of 250 in dorms, cells and separate juvenile 20 bed facility	Architectural Services	L. Dow Oliver	100%	1990	\$7,500,000
Temporary Classrooms: Woodmere, Terrytown, Lincoln and Thomas Jefferson, Jefferson Parish	Concrete classrooms with trailers, administration and lunch rooms	Architectural Services	L. Dow Oliver	100%	2006	\$8,000,000
T.H. Harris Middle School	Repairs and deferred maintenance, includes re-roof, repairs to window wall systems, add canopies	Architectural Services	L. Dow Oliver	100%	1980	\$1,500,000
Temporary Administration Building	30,000 pre-manufactured buildings	Architectural Services	L. Dow Oliver	100%	2006	\$3,000,000



WOODWARD DESIGN+BUILD

MARINE FORCES RESERVE FACILITY

FEDERAL CITY - NEW ORLEANS, LA

Due the 2005 Base Realignment and Closure Round, the Naval Reserve Forces Command moved to Norfolk, Va. Faced with the prospect of the closing of Naval Support Activity, state and local officials developed a new plan with the New Orleans Federal Alliance and HRI/ECC, LLC for a Federal City at this site. Woodward Design+Build was selected for Phase I, which includes the construction of a new facility for the Marine Forces Reserve.

Phase I includes the construction of a new 400,000 square foot, 4 story facility for the Marine Forces Reserve. The building will be the largest architectural tilt-up project in the Gulf Coast region and the largest ever for military end use. It will also allow for savings of both time and money.

On schedule and on budget was the central theme shared at the Federal City Media Day on December 4, 2009. Approximately 75-100 people joined the Federal City Team to view the progress of the Marine Forces Reserve Facility.

Owner
Naval Support Activity

Design
Mathes Brierre Architects with
Gulf Coast Architects

Building Area
411,000 square feet

Value
\$105,000,000

Completion Date
Summer 2010





WOODWARD DESIGN+BUILD

MOSQUITO, TERMITE & RODENT CONTROL

NEW ORLEANS, LA

The first design build project in the history of New Orleans was awarded to Woodward Design+Build. The City of New Orleans chose Woodward to construct the new Mosquito, Rodent and Termite Control Facility. This new facility, located near the campus of the University of New Orleans, will provide the City with state of the art operations for a crucial city service. The project has been designed to meld with the surrounding neighborhood that includes both residential, commercial and institutional elements.

- Owner**
The City of New Orleans
- Design**
Woodward Design Group
John Dalton, AIA, LEED AP
- Building Area**
20,000 square feet
- Value**
\$4,600,000
- Target Completion Date**
November 2010





WOODWARD DESIGN+BUILD

141ST READINESS CENTER

JACKSON BARRACKS - NEW ORLEANS, LA

Hurricane Katrina devastated the 9th Ward of New Orleans and St. Bernard Parish. Located in New Orleans near St. Bernard Parish, Jackson Barracks saw their facilities flooded and unuseable. The 141st Readiness Center is a four story, 112,000 square feet structural steel and brick veneer building. The project consisted of the demolition of an existing building that was located on Claiborne Ave. The building exterior has cast stone as well as the structure is designed for blast requirements. The design of the building is being coordinated to meet LEED standards which are required by the specifications.

The Central Plant is the renovation of the existing operation and maintenance building in a separate location on the campus coordinated to match the 141st Readiness Center exterior as well as the adjacent building being constructed under a separate contract. In addition to the three buildings that are under contract, there is approximately 300,000 square feet of parking for military and private vehicles.

The 141st Readiness Center at Jackson Barracks did have a slight delay in the date of completion and an increase in cost, both due to change in owner's scope. None of these issues resulted in any litigation. There were no design inadequacies and as you will see from our letter of recommendation, the Louisiana National Guard is very pleased with their new headquarters.

Owner

Louisiana National Guard

DesignWoodward Design Group
HMS Architects**Building Size**

116,000 square feet

Value

\$40,000,000

Completion Date

October 2009





WOODWARD DESIGN+BUILD

U.S. CUSTOM HOUSE

NEW ORLEANS, LA

Located on the edge of the French Quarter, The United States Custom House is one of the most important buildings in the City of New Orleans and one of its key pieces of architecture. This 4 story, 370,000 square foot historic office building was found in a state of disrepair after Hurricane Katrina and for the first time in 150 years it was completely vacant. This presented the opportunity to not only repair the damage but also to implement historic restorations as well as technology and system upgrades.

The scope of work included restoration of the Marble Hall, repairs throughout the building with extensive repairs to the upper floors, upgrades to the mechanical, plumbing, HVAC and electrical systems, restoration of the plaster walls, finishing of the public areas and many features that were covered up by later renovations, repair and restoration of numerous skylights, an extensive recapture of volume and space, and repairs to sections of roofing.

The historic renovation of the United States Custom House did have a slight delay in the date of completion and an increase in cost, both due to change in owner's scope. None of these issues resulted in any litigation. As you will see from our positive performance review, the GSA are very pleased that Woodward was able to update this iconic building.

- Owner**
United States Government
- Design**
Waggoner & Ball Architects
- Building Area**
400,000 square feet
- Value**
\$36,000,000
- Completion Date**
May 2009





WOODWARD DESIGN+BUILD

C.J. PEETE HOUSING PROJECTS

NEW ORLEANS, LA

The redevelopment of the former CJ Peete Public Housing Projects. The project consists of the new construction of a total of 460 units along with public infrastructure improvements. This new construction will provide New Orleans with much needed mixed income, multi-family housing. The total construction time will be 24 months.

Owner

C.J. Peete I, LLC

Design

KAI Design Build

Building Area

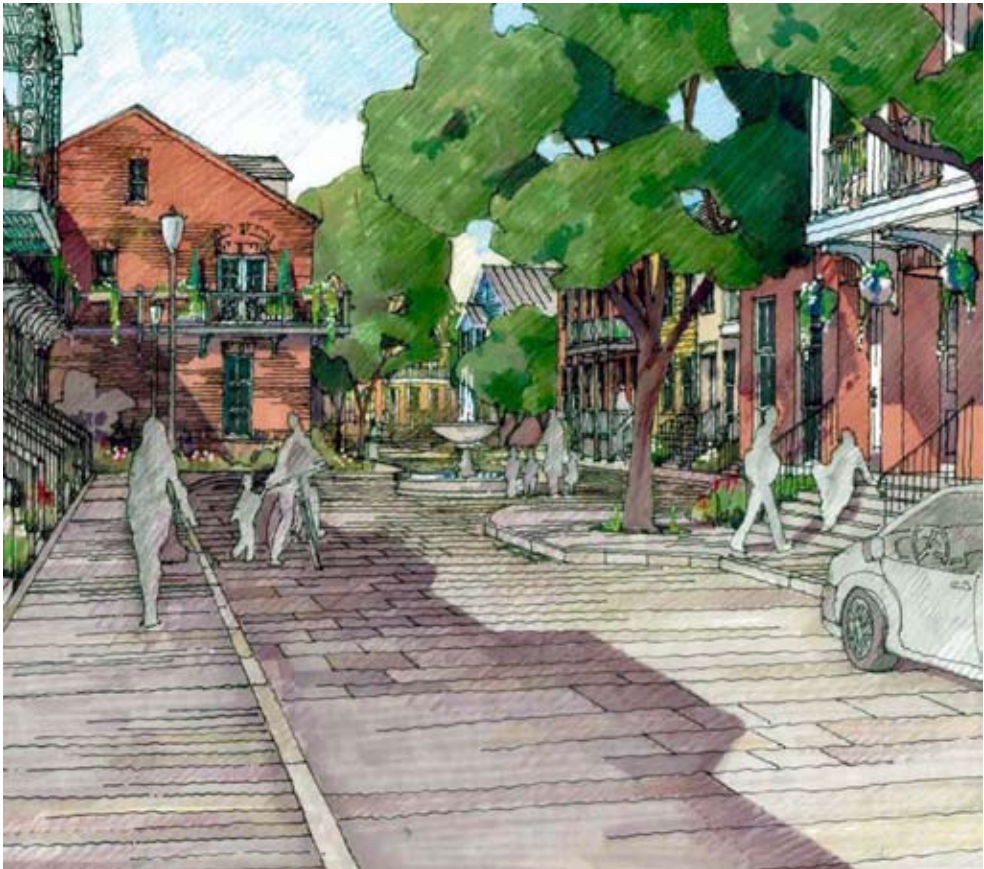
550,000 Square Feet

Value

\$100,000,000

Completion Date

February 2011





WOODWARD DESIGN+BUILD

THE TERRACES

NEW ORLEANS, LA

The Volunteers of America’s latest initiative to provide affordable housing in post-Katrina New Orleans is The Terraces. The Volunteers of America has long been active in supplying affordable housing to persons in need. The ambitious project will provide affordable housing for seniors in the area. The project consists of a 6 story, 200 unit apartment complex.



Owner
Volunteers of America

Design
Sizeler Thompson Brown Architects

Building Area
200,000

Value
\$27,300,000

Scheduled Completion
February 2010



WOODWARD DESIGN+BUILD

THE MERIDIAN

NEW ORLEANS, LA

The Revitalization of Tulane Ave. continues with the construction of The Meridian Apartments. This new project from the Domain Cos. is part of an overall \$120,000,000 investment in the Mid-City/Tulane Ave. corridor of New Orleans that will add over 500 new housing units to this area.

This project features a 4-story concrete and wood frame structure with the first floor providing covered parking and apartments on floors 2-4. The building contains 72 - 1 and 2 bedroom apartments, management office, clubhouse, exercise facility, and a computer training center.

Owner

The Domain Cos.

Design

Humphreys & Partners

Building Area

16,000 square feet

Value

\$2,400,000

Completion Date

February 2009





WOODWARD DESIGN+BUILD

RIVER GARDEN CS2

NEW ORLEANS, LA

The CS2 Phase of the River Garden Complex features both multi-family townhomes and retail buildings with apartments located on the upper floors. The site is part of the River Garden Development on Tchoupitoulas in New Orleans, LA. The entire project is a redevelopment of the former St. Thomas Housing Project.

The Townhome Phase of the project consisted of 29 buildings containing a total of 215 apartments across 3 city blocks. The project was completed 2 months ahead of schedule and turned over to the owner for rental to mixed income residents.

The Retail Apartments feature two multi-story mixed-use buildings. The first floor will house retail storefronts with upper floors providing mixed income apartments

Owner

LGD Rental II LLC

Design

HCI Architecture, Inc.

Building Area

310,000 square feet

Value

\$51,900,000

Completion

August 2009





WOODWARD DESIGN+BUILD

FILMORE PARC

NEW ORLEANS, LA

Woodward Design+Build constructed a new apartment development in Gentilly, Louisiana. It features 21 four-plex units and 10 eight-plex units with a total of 164 apartments. The project areas spans 3 city blocks

This project is the largest modular housing project in the City of New Orleans. The buildings were fabricated in a factory off site and are then delivered about 90% complete. A typical house arrives from the factory with 95% of the flooring and sheetrock in place. Once installed, plumbing connections, electrical connections, sprinkler connections, minor sheetrock work, painting, minor floor work is performed. Multiplex homes arrive as seperate “boxes” and are connected together.

Owner
MFLC Partners, ALPIC

Design
Gaudet and Tolson

Building Area
144,300 square feet

Value
\$16,300,000

Completion
October, 2009





WOODWARD DESIGN+BUILD

RIVER GARDEN ELDERLY

NEW ORLEANS, LA

River Garden Elderly is a three story apartment complex for lower-income elderly, which allows independent living while promoting social interaction and a recreational environment. The project scope included new construction of a 3-story low rise residential building containing 57 apartments. The building is a slab on grade, stick framed wood structure with an exterior skin consisting of brick, stucco and cement board siding.

The apartments were all 625 SF and included a bathroom and a full kitchen. The finishes included a Combination of VCT and carpet flooring, Leedo cabinets, plastic laminate kitchen counter tops and cultured marble vanity tops. Each unit is also equipped with an emergency nurse call in the bathrooms and bedrooms.

Owner

HRI Properties

Design

HCI Architecture, Inc.

Building Area

49,970 square feet

Value

\$7,200,000

Completion Date

December 2007



2.4 PROJECT- SPECIFIC CRITERIA



PROJECT-SPECIFIC CRITERIA

Projects that Demonstrate
Experience with
Construction/Design
Similar to the Temporary
Inmate Housing Facility

Projects	Dollar Value	Design-Build	Institutional/ Residential/ Dormitory	Public Agency
Federal City-MarForRes HQ	105,000,000	✓		✓
Templemann Detention Facilities	350,000		✓	✓
Orleans Parish Prison Expansion Phase 3	23,000,000		✓	✓
C.J. Peete Housing Development	100,000,000	✓	✓	
New Orleans Youth Study Center Modular Buildings	240,000			✓
St. Tammany Parish Jail Expansion	1,000,000		✓	✓
VOA- The Terraces	27,000,000	✓	✓	
House of Detention	40,000		✓	✓
St. Bernard Parish Jail	7,500,000		✓	✓
US Custom House	36,000,000	✓		✓
City of New Orleans Old Parish Prison	800,000		✓	✓
Orleans Parish Prison Special Needs Facility	8,000,000		✓	✓
LA Nat'l Guard 141st Readiness Center	40,000,000	✓		✓
Orleans Parish Cook-Chill Facility	5,500,000			✓
Mosquito Termite & Rodent Control Center	4,600,000	✓		✓
Orleans Parish Prison Expansion Phase 4	1,800,000		✓	✓
Federal Bureau of Investigation	16,500,000			✓

REFERENCES

3.1 PROFESSIONAL ACCOMPLISHMENTS



February 9, 2010

Woodward Design+Build
Bob Lipscomb
Senior Project Manager
1019 South Dupre Street
New Orleans, LA 70125

RE: Federal City Marine Forces Reserve Headquarters
Algiers, Louisiana

Dear Mr. Lipscomb,

Based on the performance of your firm on our Federal City project, I would highly recommend Woodward Design+Build for other significant design-build projects.

This conversion of the Naval Support Activity in Algiers into a military and government campus includes as its first phase the construction of a new 411K square foot Marine Forces Reserve Headquarters facility. This project is the largest concrete tilt-up construction project ever completed for the military. Woodward Design+Build's team of quality Architects, Engineers and Construction Professionals has allowed you to control cost and keep scheduling on this fast track project, as was the requirement for this project.

I was delighted to report to the gathered media, elected officials and guests at our media day on the Federal City project update in December, that we were both on-time and on-budget thanks to the efforts your team.

I would like to thank Woodward Design+Build for the excellent services delivered on this project. I am confident they will bring the same experience and success to future projects and I would be happy to serve as a reference for you.

Sincerely,

MajGen David Mize USMC ret
President and CEO
New Orleans Federal Alliance



DEPARTMENTS OF THE ARMY AND AIR FORCE

JOINT FORCE HEADQUARTERS-LOUISIANA
OFFICE OF THE ADJUTANT GENERAL
CAMP BEAUREGARD
PINEVILLE, LOUISIANA 71360

September 29, 2009

LANG-CFM-PD

Mr. John Dalton
Woodward Design+Build
1019 S. Dupre Street.
New Orleans, La. 70125

SUBJECT: Recommendation for AIA Design Award
1/141st Field Artillery Battalion Readiness Center, Louisiana Army National Guard

John:

As a representative of the Louisiana National Guard Construction and Facility Management Office, we approve the submission of the 1/141st Field Artillery Battalion Readiness Center located at historic Jackson Barracks in New Orleans, LA.

The facility utilizes state-of-the-art design and construction techniques, and will be instrumental in future successes of the Louisiana National Guard. This new Readiness Center is regarded throughout our organization as one of the finest facilities built in the state. We appreciate your consideration of this project.

If there are any questions, please contact me at david.haydel@us.army.mil or call (504) 278-8622.

Sincerely,

DAVID HAYDEL
CPT, EN
Project Officer, LAARNG

U.S. Customs House Evaluation by GSA (Vendor Past Performance) 12/07/2009

Customer Satisfaction:

The Contractor proactively worked with the Government team to solicit input and communicated constantly to ensure satisfaction. The Contractor had fair, honest and principled management within the company. The company exhibited a desire to deliver the product that was paid for. That desire was reflected in the business dealings with all personnel within the company. Cutting corners was not an option with this company. The Government contract had areas that the Contractor could have exploited to ensure additional profit. However, they chose to deal fairly and honestly by not exploiting those weaknesses. Instead, they proactively consulted with GSA to get questions resolved in advance.

Is the Vendor committed to customer satisfaction? Yes

Would you recommend using this vendor again? Yes

Quality of Product or Service:

The commissioning agent and other subcontractors did extensive testing to ensure a high quality product was delivered.

The contractor coordinated the work of the various subcontractors carefully and provided an excellent product.

Quality of Workmanship:	4 - Excellent	Adequacy of the CQC Plan:	3 - Good
Implementation of the CQC Plan:	3 - Good	Quality of QC Documentation:	4 - Excellent
Storage of Materials:	4 - Excellent	Adequacy of Materials:	4 - Excellent
Adequacy of Submittals:	3 - Good	Adequacy of QC Testing:	4 - Excellent
Adequacy of As-Built:	4 - Excellent	Use of Specified Materials:	4 - Excellent
Identification/Correction of Deficient Work:			
	3 - Good		

Cost Control:

The construction contractor did a fine job of cost control. However, the A/E team had little concern regarding the cost impact of design decisions. The construction contractor spent a great deal of time working to keep the design within the cost limitations of the contract. As a result the several deliverables to the Government were delayed.

3 - Good

Timeliness of Performance:

Preparation of a project network schedule was not a priority with the Contractor. The initial baseline schedule was received more than nine months after award. It was obvious that the Contractor had a schedule that they were working from, but it was not transmitted to the Government in the form of a network schedule update easily. The Contractor used a scheduling consultant and updated the schedule monthly. It was obviously not used as a management tool by the Contractor.

Quality control was handled adequately for the majority of the project. However, quality control of the work suffered after the Superintendent was moved to another project and replaced. As a result, the Government punch list was the quality control measure for the final portion of the project.

Project material planning was well executed. All long lead items were delivered on time or early.

Adequacy of Initial Progress Schedule:	0 - Unsatisfactory	Submission of Required Documentation:	3 - Good
Adherence of Approved Schedule:	3 - Good	Completion of Punch Lists:	2 - Fair
Resolution of Delays:	3 - Good	Submission of Updated and Revised Progress Schedules:	3 - Good
Warranty Response:	4 - Excellent		

Effectiveness of Management / Business Relations:

Project staffing was well coordinated up to the end of the project. The Contractor did very well staffing the project in a very difficult labor market. However, once the Superintendant was replaced, the staffing levels were more erratic.

The Contractor was very proactive in working with the Government to ensure delivery of a product that met the end requirements well.

The Contractor had difficulty managing several of their subcontractors on this design-build project. The Architect frequently had design ideas that conflicted with the budgetary and schedule constraints of the project. As a result, many deliverables were late. The fire sprinkler and fire alarm subcontractors had significant difficulty getting shop drawings approved by the GSA fire Protection Engineer.

The Contractor had difficulty getting responses to requests for proposals to the Government quickly. However, the Contractor worked diligently to help avoid the need for change orders when possible.

Training provided to the building maintenance team was excellent.

Cooperation and Responsiveness:	5 - Outstanding	Effectiveness of Job-Site Regulations:	4 - Excellent
Management of Resources/Personnel:	4 - Excellent	Compliance with Laws and Regulations:	4 - Excellent
Coordination and Control of Subcontractors:	3 - Good	Professional Conduct:	4 - Excellent
Adequacy of Site Clean-up:	3 - Good	Review/Resolution of Subcontractors Issues:	4 - Excellent
Change Order Activity by Vendor:	4 - Excellent	OM Manuals/Instructions:	4 - Excellent
Adequacy of Work Force:	4 - Excellent	Spare Parts Delivery:	3 - Good

Compliance with Labor Standards:

Preparation process for the certified payrolls was grossly inadequate. The Government had to return nearly each certified payroll at least once. The situation was only remedied partially when the Contracting Officer issued a letter declaring that payment would be withheld if the situation did not improve.

Correction of Noted Deficiencies:	3 - Good	Compliance with Labor Laws and Regulations with Specific Attention to the Davis-Bacon Act and EEO Requirements:	3 - Good
Payrolls Properly Completed and Submitted:	1 - Poor		

Compliance with Safety Standards:

Over the course of a 600 day project involving demolition and new construction there were an average of 75 people on the job per day. During this period, there was only 1 accident that resulted in the loss of 1 day of work. The Contractor and all their subcontractors were diligent in ensuring safe work practices were used.

Adequacy of Safety Plan:	5 - Outstanding	Implementation of Safety Plan:	5 - Outstanding
Correction of Noted Deficiencies:	5 - Outstanding		

Overall Comments:

This was the first federal project for this contractor in a very long time. This contractor took on a very difficult project shortly after Hurricane Katrina hit the city and depleted the available pool. In addition, the GSA Fire Protection Engineer had some exactingly conservative standards. Despite the difficulties, they produced an excellent end product.

4 – Excellent

H:\Work\US Customs GSA Evaluation

3.2 LITIGATION FROM SECTION 2.3



LITIGATION ON PUBLIC PROJECTS

Woodward Design+Build, Moses Engineers, Inc. and L. Dow Oliver & Associates, Inc. have not had any litigation from any projects presented in Section 2.3.

3.3 CLIENT REFERENCES



WOODWARD REFERENCES

CLIENTS

New Orleans Saints

Mr. Tom Benson
5800 Airline Drive
Metairie, LA 70003
(504) 733-0255

Louisiana Army National Guard

Captain David Haydel
111 Brenda Drive
Hammond, LA 70403
(504) 220-9591

New Orleans Federal Alliance

MG David Mize (USMC, Ret.)
4500 One Shell Square
New Orleans, LA 70139
(504) 585-0421

HRI Properties

Trey Langus
Tom Leonard
909 Poydras Street, Suite 3100
New Orleans, LA 70112
(504) 566-0204

Tulane University

Ms. Yvette Jones
Sr. Vice President of External Affairs
218 Gibson Hall
New Orleans, LA 70118-5698
(504) 314-2789

Tulane University

Mr. Tony Lorio
Sr. Vice President Operations & CFO
218 Gibson Hall
New Orleans, LA 70118-5698
(504) 862-8698

Dillard University

Dr. Walter Strong
Vice President for Inst. Advancement
(504) 283-8822

Marriott Convention Center Hotel

Mr. Randy Waesche
3300 W. Esplanade Avenue, Ste. 212
Metairie, LA 70002
(504) 833-5378

Poydras Home

Mr. Scott Crabtree
CEO, Lambeth House
(504) 865-1960

Park Esplanade Apartments

Mr. Ken Heller
3443 Esplanade Avenue
New Orleans, LA
(310) 394-8757

Intralox, Inc.

Mr. Rob Rosen
Laitram Corporation
220 Laitram Lane
Harahan, LA 70123
(504) 733-6739

Walker Acura

Mr. Jim Pace
Walker Volkswagen
8951 Veterans Blvd.
Metairie, LA 70002
(504) 464-4004

Benson Mercedes

Mr. Jamie Moll
3727 Veterans Blvd.
Metairie, LA 70002
(504) 456-3727

Lamarque Motor Co.

Mr. Ronnie Lamarque
3101 Williams Blvd.
Kenner, LA 70065
(504) 443-2500
(888) 882-0577

Mother's Restaurant

Mr. John Amato
401 Poydras Street
New Orleans, LA 70130
(504) 582-1601

Clarke Parking Garage

Mr. Jim Huger
940 Gravier Street
New Orleans, LA 70112
(504) 523-4521

Labarre Warehouse

Mr. Sydney Besthoff
1055 St. Charles Ave., Ste. 701
New Orleans, LA 70130
(504) 586-8442

Compass Furniture

Mr. Lou Rippner
Mr. Bill Rippner
525 Bloomfield Avenue
Jefferson, LA 70121
(504) 733-4641

Property Management Group

Mr. Sidney Besthoff III
1055 St Charles Ave., Suite 701
New Orleans, LA 70130-3942
(504) 586-1166



MOSES REFERENCES

CLIENTS

Entergy Projects

Conway Cristina
Manning Architects
(504) 412-2000

Port of New Orleans

Paul Zimmerman
Director of Operations
(504)528-3406

Audubon Nature Institute

Dale Stastny
Chief Operating Officer
(504)861-5113

Arts Council of New Orleans

Karen Kersting
Project Manager
(504) 427-3120

Make It Right Foundation

John Sader
Director of Construction
(504) 208-9265

Global Green

Beth Galante
Executive Director, N.O. Office
(504) 525-2121

Jacobs/CSRS

Walter Aertker
Program Director for RSD
(504)615-7388

City of New Orleans, Capital Projects

David Becnel, Administrator
(504) 658-8663

Architects

Williams Architects

John Williams
(504) 566-0888

Wisznia & Associates

Marcel Wisznia
(504)581-1948

Eskew+Dumez+Ripple Architects

Tracy Lea
(504) 561-8686

Billes Architecture

Gary Billes
(504)301-1622

Rozas-Ward Architects

Charlie Ward
(504) 524-4375



L. DOW OLIVER REFERENCES

CLIENTS

Brice Builders

Marty Schreve, VP Operations
PO Box 7341
Metairie, LA 70010

Henry Burch

3127 Harvard Avenue
Metairie, LA 70006

Gulf South Piling

Butch Casey
PO Box 10073
Jefferson, LA 70181

Doussan Inc.

Leonard Doussan
#3 Poydras Plaza
New Orleans, LA 70130

Eyecare Associates

Bill Dary
Ron Landry
4324 Veterans Blvd.
Metairie, LA 70006

Gootee Construction

Pat Gootee
1316 Justin Road
Metairie, LA 70001

Volunteers of America

Al Kohorst
4152 Canal St.
New Orleans, LA 70119

Ken Keubel

2955 Ridgelake Dr., Ste. 109
Metairie, LA 70002

Louisiana Nursing Home Assoc.

Joe Donchess
7844 Office Park Blvd.
Baton Rouge, LA 70809
(504) 566-0888

Lawler-Woods, Inc.

John Lawler
1600 Riverview Tower
900 S. Gay St.
Knoxville, TN 37902

St. Bernard Sheriff's Office

Jack Stephens, Sheriff
PO Box 168
Chalmette, LA 7004

Orleans Parish Criminal Sheriff's Office

819 South Broad Street
New Orleans, LA 70119-7418
Phone: (504) 822-8000

PLANNING

4.1 WORKLOAD AND MANPOWER



MANPOWER AND WORKLOAD

Woodward Design+Build knows that accurate scheduling projects cannot be solved with computer programs alone. Successful scheduling is also the result of the experience and knowledge of our people. A wealth of historical scheduling data from past and present projects is available for reference in projecting time considerations. The effects of weather (time of year), availability and productivity of local labor and similar factors are reflected in schedules. Our schedules show not only the work performed by our own forces and subcontractor forces, but includes cut-off dates for drawing delivery and finish schedules by design team members, delivery of materials, equipment and services outside our contract and critical owner decision dates.

During pre-construction, schedules are updated at each development stage of drawings or for major decisions affecting the project. Once construction starts, two week look-ahead schedules are prepared for use by on-site crews. Master schedules are revised monthly or more often to indicate scope of changes or other matters affecting completion times.

The availability of proper manpower is addressed from the inception by our Operations Team. Extensive projections of manpower needed are continually updated to assure the proper resources are available when a project team needs them.

Woodward has extensive experience not only completing projects on time, but also the ability to perform on a wide variety of projects with fast track schedules. After Hurricane Katrina, Woodward rebuilt the campuses of Dillard University and Tulane University. The historic campus of Dillard University suffered extensive flooding during the storm in addition to wind damage. Woodward moved executives, project managers, superintendents and administrative staff to Dillard's campus to handle the very accelerated rebuild process. The task was to rebuild the school to the point of being able to hold classes and house students by September of 2006. Woodward Design+Build had to complete work in over 34 on-campus and 6 off-campus buildings on multiple floors, and completed over \$67,000,000 of work in a 12 month period. Woodward continued working on the project after the start of class in September 2006, but was able to complete all of the buildings necessary for Dillard to both house students and begin classes for the Fall Semester. Dillard's relationship

with Woodward has continued as Woodward has just completed the new flagship facility for the campus of Dillard, the Professional Schools Building. This new \$40,000,000 facility was completed on-time with a fast track design-build schedule. At Tulane University, Woodward was faced with a similar challenge. The task was to rebuild the school so that it could begin holding classes and housing students on the campus in a 3 month period. Woodward had to complete work in over 80 buildings, on multiple floors, working on as many as 30 at one time, and completing over \$25,000,000 worth of work in a 3 month period. The project was completed on time, with great quality and no safety incidents due to the Woodward team's high level of planning, scheduling and coordination. Woodward's relationship with Tulane has continued, including such projects as the Turchin Baseball Stadium. Woodward has had the opportunity to team up with HRI Properties to construct many projects, including Flint Goodridge Elderly Apartments, River Garden Elderly Apartments, and River Garden Historic Apartments. All three projects were awarded 2006 Gulf Opportunity Zone Low Income Housing Tax Credits. Woodward was able to complete these projects on time despite an aggressive schedule designed to meet the requirements of the Housing Tax Credits. Woodward's relationship with HRI Properties has continued due to the outstanding performance on these projects.

Number of Contracts Currently in Force

28

Estimated Value of Work Remaining for Contracts Currently in Force for 2010

\$202,812,721

Estimated Value of Work Remaining for Contracts Currently in Force for 2011

\$45,371,083

Estimated Value of Work Pending Award of Bid or Proposal within the next 12 Months

\$63,442,202

4.2 AGENCY WORK

NATURE, QUANTITY, AND VALUE OF AGENCY WORK AWARDED

Project Name and Location	Description	Firm Responsibility	Key Personnel	Percentage Complete	Year Completed	Value of Work
Woodward Design+Build						
Kitchen-Warehouse Plant* New Orleans, LA	New construction of kitchen warehouse plant	General Contractor	Steve Lawson Rick Dupont	*Project Awarded 1st Qtr. 2010	Target-2012	\$72,000,000
Moses Engineers, Inc.						
Refer to Section 2.3 Public Projects. These projects were awarded on behalf of OPCSO by the City of New Orleans.						
L. Dow Oliver & Associates, Inc.						
Orleans Parish Prison Expansion, Phase 3, New Orleans, LA	1,200 man in 2 man cells, two story with mezzanines	Complete Architectural Services	L. Dow Oliver	100%	1993	\$23,000,000
Orleans Parish Prison Expansion, Phase 4 (About Face) New Orleans, LA	One story dorms and classroom capacity 225	Complete Architectural Services	L. Dow Oliver	100%	2000	\$1,800,000
Orleans Parish Prison Expansion Phase 5, New Orleans, LA	Special needs facility capacity 292 in two and four man cells, three stories	Complete Architectural Services	L. Dow Oliver	100%	2002	\$8,000,000
Orleans Parish Prison Expansion, Kitchen	Cook-Chill Facility, Capacity 10,000 inmates, 43,600 square feet	Complete Architectural Services	L. Dow Oliver	100%	1999	\$5,500,000

4.3 DESIGN AND CONSTRUCTION ALLOCATION



TEAM APPROACH

Woodward's team approach is a truly integrated design and construction process that is defined by the collaborative efforts of all rather than just the knowledge of a few. This is how Woodward has approached projects for the past 86 years, and how we have established a client base and portfolio of projects that reflect our success. Our integrated process is rooted in the establishment of a good, well-rounded team of professionals who bring various levels of knowledge and experience to the table. The team that we have selected for this project can be seen in our organizational chart:

DESIGN

Woodward Design Group

Led by John F. Dalton Jr., AIA, LEED AP, Woodward Design Group (WDG) will be the project architects with Mr. Dalton serving as the Architect of Record. Mr. Dalton will be responsible for coordinating the design efforts through in-house Woodward personnel as well as with consultants. He will also oversee the production of the construction documents and assure that WDG's design quality control program is implemented throughout the process. Mr. Dalton's experience ranges from single and multi-family residential, it includes commercial adaptive reuse and historic renovation, and also encompasses multiple types of new construction, including personally designing a new \$40 million Readiness Center for the Louisiana National Guard, which meets Anti-Terrorism Force Protection requirements. Mr. Dalton is supported by a staff that has over 100 years of combined design and construction experience.

L. Dow Oliver and Associates Architects, PC

The experience of L. Dow Oliver, AIA, CSI, NCARB has few equals – Mr. Oliver has been in practice as an architect in the New Orleans area since 1958. His extensive portfolio includes a number of correctional/institutional projects, including many projects for Orleans Parish Prison. For this reason, Mr. Oliver will serve as Prison Design Consultant and work with Mr. Dalton and WDG throughout the design of this facility. He will be involved on a daily basis during schematics and design development as well as have input through the submittal and construction administration phases.

ENGINEERING

Woodward Engineering Group

Woodward Engineering Group (WEG) will serve as the structural engineers on the project. WEG is led by Johann Palacios, PE, LEED AP, who has been designing structures for Woodward for nearly 10 years. Mr. Palacios's experience in designing structures in Southeast Louisiana and the Gulf Coast with the specific wind loading requirements, as well as his experience in designing structures of various levels of security is an important asset to the team. Mr. Palacios is also supported by a staff with a combined 100 years of design and construction experience.

Moses Engineers, Inc. (MEP Engineering)

Woodward has worked with Moses Engineering on multiple projects in the recent past. Two notable projects are the 141st Readiness Center for the Louisiana National Guard (\$40 million), and the new headquarters for the New Orleans Termite, Rodent, and Mosquito Control Board, which is the first design-build project ever awarded by the City of New Orleans. Moses' extensive experience in institutional/correctional projects, in addition to other major governmental, national, and international projects will make them a valuable asset to the project team.

PRECONSTRUCTION

The Woodward integrated approach starts with Preconstruction where in-house estimating staff, lead by lead estimator Rick Dupont, are paired with Mr. Dalton and his design team. During this phase, major subcontractors are identified and brought in for their design and pricing input. This forms a Preconstruction Team that works closely as the design is developed, so that conceptual and detailed estimating, building systems analysis, value analysis, life cycle analysis, constructability reviews, design alternatives, and sustainability reviews become a part of the design process. These analyses and reviews are considered throughout the early stages of development to inform the designers, rather than traditional methods of developing the design and revisiting steps, because the project is over budget, or the systems do not work as planned. Woodward has been able to deliver high quality buildings that meet owner requirements within budget because of this integrated process.



An important aspect of this process is that Woodward identifies a construction project executive (Steve Lawson) and project manager (Joseph Cardwell) specific to each project who also attend the preconstruction meetings and assist in: creating construction schedules, providing contract proposals, cash flow projections, trade prequalification and solicitation, and manage the purchasing/buyout phase of the project. This is an invaluable asset to the Woodward process, because the individuals who are responsible for the execution of the construction of the building and contracts are involved with the project from its inception.

CONSTRUCTION

Project Executive, Steve Lawson will direct all construction related management activities and will be the single point of contact for the Orleans Parish Criminal Sheriff's Office (OPCSO) or their construction management agency. Mr. Lawson, will be Woodward's primary point of contact and will oversee the performance of the Project Manager, Joseph Cardwell, and the Project Superintendent, Ray Baumann. They are supported throughout this process by the construction administration activities of Mr. Dalton, Woodward Design Group and the other design consultants and staff. Just as it is important for Mr. Lawson and Mr. Cardwell to be involved throughout the design of the project, it is just as important for Mr. Dalton and the design team to be involved throughout construction. This is a Woodward quality control measure to assure that the decisions made during Preconstruction follow through to the construction in the field.

SAFETY AND QUALITY CONTROL

Our Safety Director Jerry Arnold and other construction quality control personnel will report directly to Bill LeCorgne. This will assure that both Woodward's Safety Program and Field Quality Control Program are implemented, and will allow Woodward personnel to take timely and effective actions to mitigate potential problems.

Woodward is ready to commit all necessary company resources to meet all potential project challenges. Bill LeCorgne and Ken Flower will personally monitor the design and construction progress through weekly Design and Estimating meetings, as well as Mr. LeCorgne's monthly cost, schedule and quality control project meetings.

DBE PROGRAM

5.1 PROGRAM COMPLIANCE



DBE PROGRAM COMPLIANCE

Based on our commitment to diversity, Woodward Design+Build (Woodward) has an approach to offer meaningful working opportunities amongst small businesses. Our Small Business vendors provide us with vital links to our community, increase our capacity and flexibility in meeting customer needs, create various new opportunities, strengthen our local economy, and broaden our base of eligible subcontractors.

Woodward will aggressively encourage the participation of small business to the maximum extent practicable consistent with client expected efficient performance of our work. Woodward's current Small Business Enterprise Program is inclusively of Disadvantaged Business Enterprise (DBE), State and Local Disadvantage Business Enterprise (SLDBE), Women Owned Business Enterprise (WBE), HUBZone Firms (HUBZone), and Small Disadvantaged Businesses 8a (SDB) companies.

It is our commitment at Woodward if awarded this contract to subcontract work to DBE and WBE companies and comply with guidelines set forth in the CDBG Compliance Provisions. We will furnish upon award DBE Forms 1 and 3 as backup documentation.

Woodward works in two concurrent directions to increase diversity:

1. Our Mentor-Protégé Program
2. Community Outreach and Communication Plan

Mentor-Protégé Program

Woodward is committed to developing a comprehensive Mentor-Protégé Program. Our ability to provide professional guidance and support to its protégé partner to facilitate their development of both Woodward and the development of the Greater New Orleans business community.

Community Outreach and Communication Plan

Our Design-Build Team is committed to a process that will result in an enhanced professional small business environment by stabilizing and developing competent enterprises in Southeast Louisiana.

The Design-Build Team recognizes that they have a social responsibility to provide opportunities to small businesses and their communities and recognize the long-range benefits of utilizing their services.

We take our Small Business Enterprise Program very seriously. Our team strategy to assist and foster small business development will take place on a number of levels utilizing several initiatives.

A Vendor Plan, consisting of specific elements, ensures the greatest possible opportunities for small business participation in all projects. The Design-Build Team's Plan as outlines in its consolidated form is:

- We do more than plan for "Goals", rather, we make a plan for identifying participation at all levels, including working with major subcontractors to adapt the same philosophies.
- Identify potential sources for solicitation.
- Assign our DBE Corporate Representative along with a description of duties.
- Conduct pre-qualification interviews to develop a list of approved vendors.
- Establish open book recording and documentation of the vendor plan.
- Encourage participation through sub-contracted work by including specific language in all sub-contract agreements.
- Target sub-contract scopes of work that could be sub-divided into small packages thus providing greater opportunity for small business.

The DBE Representative's duties include the development, preparation and execution of individual vendor plans and monitoring performance relative to contractual sub-contracting requirements contained in this plan, including but not limited to:

- Developing and maintain bidders' lists of Small Business firms.
- Assuring that bid packages are structured to permit small business firms to participate to the maximum extent possible.
- Maintenance of records regarding solicitations and vendor award activity, reviewing each solicitation for compliance with this plan.
- Supporting trade fair, pre-bid meetings, and other similar activities which benefit small business firms.
- Monitoring success of plan; submitting reports as required.
- Placing public advertisements in various

publications to notify small businesses of upcoming contracting or sub-contracting opportunities. Such publications are: New Orleans City Business, The Times Picayune, and Louisiana Weekly.

- We operate with good faith negotiations in all small business agreements and never intend to disqualify a DBE subcontractor without solid reasoning.

The use of qualified Small Business firms on this project will foster a mentoring environment for firms to grow in. We look forward to creating alliances and partnerships that will go well beyond this project. We also expect to identify additional partners we can work with on future projects throughout our region.

The DBE Representative will maintain, at minimum, the following types of records to documents compliance with the plan:

- The procedures adopted to comply with the project's special provisions
- Small Business source lists, guides and other data identifying firms that will participate in the work.
- Organizations contracted for referrals and the results of those contacts.
- Records of each vendor indicating:
- The dollar value of contracts awarded to small businesses.
- The percentage of the dollar value of all small business vendor work.
- Reasons for failure to solicit, or award work to small businesses.
- Records of each vendor awarded, including the date of the award.

To achieve maximum results, we have established specific goals and objectives for this program:

- To build stronger, more viable and more profitable small businesses that will gain knowledge and experience from this project.
- To achieve maximum participation.
- To involve the community through outreach activities, education and employment opportunities.
- To create economically beneficial results for the City of New Orleans and the surrounding area.
- To create a successful business model for future projects.
- Where economically and logistically feasible, break down project requirements into smaller tasks or quantities, in order to permit maximum opportunity for participation by Small Businesses
- Offer instruction and clarification on pre-qualification procedures, bid documents, the bid process, sub-contracting procedures, and special requirements of the contract when applicable.
- Monitor actual utilization of Small Businesses periodically throughout the project.

WOODWARD DESIGN+BUILD | TEMPORARY INMATE HOUSING | FEBRUARY 17, 2010