

TEC Professional Services Questionnaire

A. Project Name and Advertisement Resolution Number:

Coastal Engineering Consulting Services as needed parish wide
SOQ 24-020

B. Firm Name & Address:



Duplantis Design Group, PC
16564 East Brewster Road, Suite 101
Covington, LA 70433

C. Name, title and contact information of Principal, as defined in Section 2-926 of the Jefferson Parish Code of Ordinances, who is a registered, licensed architect, professional engineer, or surveyor in the State of Louisiana:

Joseph P. Guillory, PE - Professional in Charge of Project
Vice President of Specialty Services + Partner
16564 East Brewster Road, Suite 101, Covington, LA 70433
985.249.6180
jguillory@ddgpc.com

D. Name and contact information of employee who is a registered and licensed architect, professional engineer, or surveyor in the State of Louisiana in the applicable discipline. A subcontractor may be substituted here only if the advertised Project requires more than one discipline.

Joseph P. Guillory, PE - Professional in Charge of Project
Vice President of Specialty Services + Partner
16564 East Brewster Road, Suite 101, Covington, LA 70433
985.249.6180
jguillory@ddgpc.com

E. Please provide the number of employees whose primary function corresponds with each category:

<u>23</u> Administrative	___ Estimators	___ Specification Writers
<u>9</u> Architects (Licensed)	___ Geologists	___ Structural Engineers
___ Chemical Engineers	___ Geotechnical Engineers	___ Graduate Engineers
<u>27</u> Civil Engineers	___ Interior Designers	<u>30</u> Project Managers
<u>4</u> Construction Inspectors	<u>4</u> Landscape Architects	___ Clerical
___ Ecologists	<u>2</u> Land Surveyor	<u>1</u> Grant/Funding Specialist
___ Electrical Engineers	___ Mechanical Engineers	___ Sanitary Engineers
<u>18</u> Engineer Intern	___ Environmental Engineers	
<u>3</u> Professional Land Surveyors		

Other: 24 Survey Crew

2 GIS

175 TOTAL

2 Environmental Scientists

26 Drafters

F. Is this submittal by a JOINT-VENTURE? Please check:

YES ☐

NO ☒

If marked "No" skip to Section I. "Yes" completed Sections G-H.

TEC Professional Services Questionnaire


G. If submittal is by JOINT-VENTURE, list the firms participating and outline specific areas of responsibility (including administrative, technical, and financial) for each firm. Please attach additional pages if necessary.

1. N/A

2. N/A

H. Has this JOINT-VENTURE previously worked together? Please check: Yes_____ No _____

I. List all subcontractors anticipated for this Project. Please note that all subcontractors must submit a fully completed copy of this questionnaire, applicable licenses, and any other information required by the advertisement. See Jefferson Parish Code of Ordinances, Sec. 2-928(a)(3). Please attach additional pages if necessary.

Name & Address:	Specialty:	Worked with Firm Before (Yes or No):
 STRATUM ENGINEERING, LLC Stratum Engineering, LLC 585 Johnny F. Smith Ave, Slidell, LA 70460	Geotechnical Engineering	Yes, Stratum Engineering, LLC has worked with DDG before.

J. Please specify the total number of support personnel that may assist in the completion of this Project: 22

TEC Professional Services Questionnaire

PROFESSIONAL IN CHARGE OF PROJECT:
Name & Title:
Joseph P. Guillory, PE Vice President of Specialty Services + Partner
Project Assignment:
Professional in Charge of the Project
Name of Firm with which associated:
Duplantis Design Group, PC
Years' experience with this firm:
11 Years
Education: Degree(s)/Year/Specialization:
Bachelor of Science in Civil Engineering, 2010, University of New Orleans
Active registration: Year first registered/discipline:
Licensed in 2016 / Registered Professional Engineer / Civil Engineering Louisiana, #41131
Other experience and qualifications relevant to the proposed Project:
Lake Borgne Marsh Creation Increment 1 (PO-0180) St. Bernard Parish, LA Lower W-15 Basin Drainage Improvements St. Tammany Parish Government Bayou Bonfouca Marsh Creation Project (PO-104) St. Tammany Parish, LA Flat Lake Sediment Management Study St. Martin Parish, LA W-14 Improv. & Fritchie Marsh Hydrologic Restoration St. Tammany Parish, LA LA 22 Gapping Project Ascension Parish, LA GOMESA Assumption Parish Flood Protection Levee Improvements Assumption Parish, LA Grand Canard Mitigation Bank Hydrologic Restoration Jefferson Davis Parish, LA Program Management OCD/CDBG Drainage Projects St. Tammany Parish, LA Commonwealth LNG BUDM Marsh Creation Cameron Parish, LA

JOSEPH P. GUILLORY, PE

VICE PRESIDENT OF SPECIALTY SERVICES + PARTNER +
PROFESSIONAL IN CHARGE OF THE PROJECT



Joe has lead our coastal division to exponential growth. Currently, he and his team are designing and managing the construction of the largest marsh creation project, Lake Borgne, implemented by CPRA to date. As a civil and coastal engineer, Joe brings a technical yet practical approach to Louisiana's coastal challenges – land loss, sea level rise, subsidence, storm surge, water management, and erosion. He began his engineering career working for CPRA where he supported the design of thousands of acres of marsh creation. He has helped analyze and develop sound approaches to water management through his involvement with operation plans for Mississippi River diversions as well as his support of the State's 2012 Coastal Master Plan. His understanding and familiarity with Louisiana's coast ensures that his design concepts will work with the natural processes that shape our coast.

AREAS OF EXPERTISE

- Program + Project Management
- Coastal Engineering + Restoration
- Marsh Creation
- Hydrologic Restoration
- Alternative Funding Sources
- Freshwater Diversion
- Benefit Cost Analysis
- Grant Management

RELEVANT PROJECT EXPERIENCE

LAKE BORGNE MARSH CREATION - INCREMENT 1 (PO-0180)

Coastal Protection and Restoration Authority

Project Manager / Lead Engineer. DDG for the Lake Borgne Marsh Creation Project, located in St. Bernard Parish. Project limits will extend approximately four miles from Shell Beach on the southern rim of Lake Borgne to Lena Lagoon on the east. Total construction cost will be nearly \$127 million, entailing 3,703 acres of marsh creation.

LOWER W-15 BASIN DRAINAGE IMPROVEMENTS

St. Tammany Parish Government

Project Manager/ Lead Engineer. Mr. Guillory lead the DDG team in the design phase, permitting, preparation of bid documents and construction inspection of this project. The drainage improvements include widening of the Lower W-15 canal and construction of a 324 ac-ft detention pond.

BAYOU BONFOUCA MARSH CREATION PROJECT (PO-104)

Coastal Protection and Restoration Authority

Engineer/Construction Manager. Joe provided construction administration on this project (located in St. Tammany Parish) as a sub-consultant to Providence Engineering. The Project consisted of placing sediment hydraulically dredged from Lake Pontchartrain in open water sites to create 620 acres and nourish approximately 200+ acres of marsh.

FLAT LAKE SEDIMENT MANAGEMENT STUDY

Coastal Protection and Restoration Authority

DDG's coastal team conducted a sediment management study to analyze the lakebed sediments. The goals of the study are to support the design of a restoration project to rehabilitate habitat, improve biological conditions, and re-establish access for the benefit of public use.

W-14 IMPROVEMENTS & FRITCHIE MARSH HYDROLOGIC RESTORATION

St. Tammany Parish Government

Project Manager. The scope aimed at reducing the risk of flooding for residents in the W-14 basin and reducing the marsh loss rates in the Fritchie Marsh. This will be accomplished by widening approximately 3,250 feet of the W-14 Canal and improving water conveyance through Fritchie Marsh, which allows increased flow from the W-14 basin. The DDG team is refining an unsteady state HEC-RAS model of the W-14 and developing a water surface model of Fritchie Marsh.

AVAILABILITY

Throughout duration of Project

CONTACT

O: 985.249.6180

E: jguillory@ddgpc.com

EDUCATION

B.S. Civil Engineering, 2010,
University of New Orleans

EXPERIENCE

10+ Years of Experience

WITH DDG

2013 to Present

CERTIFICATIONS

Licensed Professional
Engineering, LA #41131

TEC Professional Services Questionnaire

KEY PERSON, SPECIALIST, OR INDIVIDUAL CONSULTANT:

Name & Title:

Christopher Russo, PE
Coastal Engineering Lead

Project Assignment:

Coastal Engineering Lead

Name of Firm with which associated:

Duplantis Design Group, PC

Years' experience with this firm:

5 Years

Education: Degree(s)/Year/Specialization:

Bachelor of Science in Civil Engineering, 2019, Louisiana State University

Active registration: Year first registered/discipline:

Licensed in 2024 / Registered Professional Engineer / Civil Engineering Louisiana, #48868

Other experience and qualifications relevant to the proposed Project:

Lake Borgne Marsh Creation Increment 1 (PO-0180) | St. Bernard Parish, LA
Lower W-15 Basin Drainage Improvements | St. Tammany Parish Government
Bayou Bonfouca Marsh Creation Project (PO-104) | St. Tammany Parish, LA
Flat Lake Sediment Management Study | St. Martin Parish, LA
W-14 Improv. & Fritchie Marsh Hydrologic Restoration | St. Tammany Parish, LA
Lakeshore Villages Development | Slidell, LA
Southwest Ponchatoula Drainage Study | City of Ponchatoula
Commonwealth LNG BUDM Marsh Creation | Cameron Parish, LA
Hydrodynamic Modeling Evaluation of Laurel Ridge Levee Ext. | Ascension Parish Government

CHRISTOPHER RUSSO, PE

COASTAL ENGINEERING LEAD



Chris' work experience has focused mainly on coastal restoration, water resource engineering, and overall stormwater management. He has engaged in data collection and processing for the Doubloon Bayou Water Level monitoring project; assisted in the design, management of the Coastal Protection and Restoration Authority's Lake Borgne Marsh Creation Project and provides support in the construction administration phase. Likewise, he has experience with EPA SWMM to evaluate stormwater management systems in Jefferson Parish, Louisiana. Chris has contributed to multiple other water resource projects in the civil engineering world to produce an extensive array of engineering knowledge.

AREAS OF EXPERTISE

- Program + Project Management
- Coastal Engineering + Restoration
- Marsh Creation
- Hydrologic Restoration
- Alternative Funding Sources
- Freshwater Diversion
- Benefit Cost Analysis
- Grant Management

RELEVANT PROJECT EXPERIENCE

LAKE BORGNE MARSH CREATION - INCREMENT 1 (PO-0180)

Coastal Protection and Restoration Authority

Engineer Intern. Mr. Russo assisted with the engineering and design of this project, a large scale marsh creation project that is anticipated to create approximately 2,769 acres of marsh. Mr. Russo will also serve as an incremental role in the construction administration and inspection phase.

LOWER W-15 CANAL DRAINAGE IMPROVEMENTS

St. Tammany Parish Government

Engineer Intern. Mr. Russo assisted the DDG team in the design phase, permitting, preparation of bid documents and construction inspection of this project. The drainage improvements include widening of the Lower W-15 canal and construction of a 324 ac-ft detention pond.

BAYOU BONFOUCA MARSH CREATION PROJECT (PO-104)

Coastal Protection and Restoration Authority

Engineer Intern. Chris aided in the construction administration and inspection of Bayou Bonfouca Marsh Creation, a 591 acre project. DDG served as a subconsultant to Providence Engineering for this project. DDG was responsible for construction administration duties which included review of shop drawings and submittals, preparation of field changes, change orders, review of invoices (including Davis Bacon Act responsibilities) construction progress meetings, and final inspections.

FLAT LAKE SEDIMENT MANAGEMENT STUDY

Coastal Protection and Restoration Authority

Engineer Intern. DDG was tasked to conduct a sediment management study to analyze the lake bed sediments of Flat Lake. The goals of the study were to support the design of future restoration projects to be undertaken by CPRA.

W-14 DRAINAGE CANAL IMPROVEMENTS

St. Tammany Parish Government

Engineer Intern. This project aims to reduce the risk of flooding for residents in the W-14 Canal Basin while simultaneously reducing the rate of erosion in the Fritchie Marsh. This will be accomplished by widening of approximately 3,250 feet of the W-14 Canal and the design of features to strategically convey additional freshwater through the Fritchie Marsh. These features are expected to include conveyance channels and modifications to an existing control weir situated within the W-14 Canal. Mr. Russo is aiding the Water Resources team to refine an existing unsteady HEC-RAS model to evaluate alternatives for channel widening. She also worked with The Water Institute to prepare a MIKE21 model to evaluate flow through the marsh and simulate various improvement alternatives.

AVAILABILITY

Throughout duration of Project

CONTACT

O: 985.249.6180

E: crusso@ddgpc.com

EDUCATION

B.S. Civil Engineering, 2019,
Louisiana State University

EXPERIENCE

5 Years of Experience

WITH DDG

2019 to Present

CERTIFICATIONS

Licensed Professional
Engineering, LA #48868

TEC Professional Services Questionnaire

KEY PERSON, SPECIALIST, OR INDIVIDUAL CONSULTANT:

Name & Title:

LeeAnn Fitch, MS, PE, CFM
Water Resources Lead + Associate

Project Assignment:

Water Resources Lead

Name of Firm with which associated:

Duplantis Design Group, PC

Years' experience with this firm:

7 Years

Education: Degree(s)/Year/Specialization:

Doctor of Philosophy Civil and Environmental Engineering, Louisiana State University,
Course Completion 2020

Master of Science, Coastal and Ecological Engineering, 2016, Louisiana State University

Bachelor of Science, Environmental Engineering, 2014, Louisiana State University

Active registration: Year first registered/discipline:

Licensed in 2020 / Registered Professional Engineer / Civil Engineering Louisiana, #44323

Other experience and qualifications relevant to the proposed Project:

W-14 Improv. & Fritchie Marsh Hydrologic Restoration | St. Tammany Parish, LA

Lower W-15 Basin Drainage Improvements | St. Tammany Parish Government

Bayou Bonfouca Marsh Creation Project (PO-104) | St. Tammany Parish, LA

Flat Lake Sediment Management Study | St. Martin Parish, LA

LA 22 Gapping Project | Ascension Parish, LA

Grand Canard Mitigation Bank Hydrologic Study | Ascension Parish, LA

William South Mitigation Bank | Livingston Parish + Tangipahoa Parish, LA

Lake Borgne Marsh Creation Increment 1 (PO-0180) | St. Bernard Parish, LA

MorganField Master Drainage Plan & Detention Credit System | Calcasieu Parish, LA

LEEANN FITCH, MS, PE, CFM

WATER RESOURCES LEAD + ASSOCIATE



LeeAnn has pioneered DDG's water resources services over the last 7 years. She is a licensed professional engineer in the State of Louisiana, Certified Floodplain Manager, and has been a member of ASCE Coast, Oceans, Ports and Rivers Institute (COPRI), Louisiana Floodplain Management Association (LFMA), and Louisiana Water Environment Association (LWEA), and serves as commissioner for the Amite River Basin Drainage and Conservation District. At DDG, she continually expands DDG's expertise in hydrodynamic software, mapping procedures, and data analysis. LeeAnn is a leader and mentor within our firm and continues to exert her passion for reducing flood risk through higher standards and regional improvement solutions throughout the state. She has extensive experience with 1D/2D hydrodynamic models including USACE's HEC-suite, EPA's SWMM / CHI's PCSWMM and DHI's MIKE. She has utilized these models to evaluate existing drainage conditions, conduct flood mapping, and develop solutions to identify and reduce the risk of flooding to communities. She has conducted and led efforts involving in situ monitoring and various data collection methods, master planning, design, permitting, and construction administration.

AVAILABILITY

Throughout duration of Project

CONTACT

T: 225.751.4490

E: lfitch@ddgpc.com

EDUCATION

Doctorate of Philosophy Civil and Environmental Engineering, Louisiana State University, Course Completion 2020

M.S. Coastal and Ecological Engineering, 2016, Louisiana State University

B.S. Environmental Engineering, 2014, Louisiana State University

EXPERIENCE

7+ Years of Experience

WITH DDG

2017 to Present

CERTIFICATIONS

Licensed Professional Engineering, LA #44323

Certified Floodplain Manager (CFM)

AREAS OF EXPERTISE

- Program + Project Management
- Drainage Design
- Benefit Cost Analysis
- Numerical Modeling
- Hydrologic Restoration
- Grant Management

RELEVANT PROJECT EXPERIENCE

W-14 IMPROVEMENTS & FRITCHIE MARSH HYDROLOGIC RESTORATION

St. Tammany Parish Government

Project Engineer. Ms. Fitch has worked to reduce flood risks within the W-14 Canal Basin and the degradation of Fritchie Marsh. Project concepts include widening of the W-14 Canal, regional detention, and features to convey additional freshwater through Fritchie Marsh. HEC-HMS / HEC-RAS models were used for flood analysis, and a MIKE21 model was used to assess alternative improvements throughout Fritchie Marsh. Ms. Fitch completed the benefit cost analysis which secured HMGP funding.

LOWER W-15 BASIN DRAINAGE IMPROVEMENTS

St. Tammany Parish Government

H&H Lead / Asst. Project Engineer. Ms. Fitch utilized HEC-HMS / HEC-RAS models to understand existing flooding conditions within the W-15 basin, evaluated alternatives, and performed a benefit cost analysis to support the award of FEMA HMGP funds. Ms. Fitch assisted with the design and preparation of contract documents for 1+ mile of canal widening and construction of a 54-acre detention pond.

BAYOU BONFOUCA MARSH CREATION (PO-0104)

Coastal Protection and Restoration Authority

Asst Project Manager. Ms. Fitch provided final report preparation and construction administration support on the project as a subconsultant to Providence Engineering. Project consisted of placing sediment hydraulically dredged from Lake Pontchartrain in open water sites to create 620 acres and nourish approximately 200+ acres of marsh.

FLAT LAKE SEDIMENT MANAGEMENT STUDY

Coastal Protection and Restoration Authority

Project Engineer. Ms. Fitch is conducted a sediment management study to analyze the lakebed sediments of Flat Lake. The goals of this study are to support the design of a restoration project to rehabilitate habitat, improve biological conditions, and re-establish access for the benefit of public use. Ms. Fitch is assisted with data collection, topographic surface generation, and analysis.

GRAND CANARD MITIGATION BANK HYDROLOGIC STUDY

Resource Environmental Solutions, LLC

H&H Lead. Ms. Fitch developed a 2D hydrodynamic model of the 250-acre mitigation bank for the design of a water control system that will optimize the mitigation bank's hydrology. The model was calibrated based on topography/bathymetry survey data and six months of measured water level data from monitoring wells throughout the site.

TEC Professional Services Questionnaire

KEY PERSON, SPECIALIST, OR INDIVIDUAL CONSULTANT:

Name & Title:

Alex Boudreau, MS, PE
Senior Project Manager

Project Assignment:

Senior Project Manager

Name of Firm with which associated:

Duplantis Design Group, PC

Years' experience with this firm:

1 Year

Education: Degree(s)/Year/Specialization:

Master of Science, Civil Engineering, 2013, Louisiana State University

Bachelor of Science, Biosystems Engineering, 2011, Clemson University, Minor in Environmental Engineering

Certification, Coastal Engineering, 2017, University of New Orleans

Ocean and Coastal Engineering - December 2015

Design of Coastal and Hydraulic Structures - May 2016

Coastal Processes - December 2016

Sediment Transport and Dredging - May 2017

Active registration: Year first registered/discipline:

Licensed in 2018 / Registered Professional Engineer / Civil Engineering Louisiana, #42737

Other experience and qualifications relevant to the proposed Project:

GOMESA Bayou Bonfouca Regional Detention Pond | St. Tammany Parish, LA

French Branch Pond Expansion Study | St. Tammany Parish, LA

Cypress Bayou Green Infrastructure Project | East Baton Rouge, LA

Coastal Master Planning | St. Bernard, Parish*

Iberia Parish Levee, Hurricane, & Conservation District Master Plan Enhancements & Initial Permitting | Iberia Parish, LA*

Lake Pontchartrain Shoreline Protection*

* Experience Prior To DDG

ALEX BOUDREAU, MS, PE

SENIOR PROJECT MANAGER



Alex is a professional engineer with over 9 years of experience in coastal and civil engineering and construction. He has acquired a broad and strong engineering base through both his academic background and career, having worked on tasks related to various disciplines of engineering, modeling, hydrology, permitting, structural design, and project management. Through this particular career track, he has acquired valuable software skills, engineering resources, professional contacts, and management practices.

AREAS OF EXPERTISE

- Program + Project Management
- Coastal Engineering + Restoration
- Numerical Modeling
- Hydrologic Restoration
- Benefit Cost Analysis
- Planning Preparation

RELEVANT PROJECT EXPERIENCE

GOMESA FLOOD PROTECTION LEVEE IMPROVEMENTS

Assumption Parish Police Jury

Project Manager. As Project Manager, Mr. Boudreau is responsible for leading DDG's efforts in providing the engineering and design of various levee systems in Assumption Parish; as like many coastal areas within Louisiana, Assumption Parish regularly floods due to both significant rainfall and surge events. This has led Assumption Parish, also like most coastal areas, to implement immediate flood reduction strategies without an overall master plan designed. The effort that DDG is currently undertaking, and which is being managed by Mr. Boudreau, is the surveying and recordation of existing levee systems and associated pump stations such that a digital repository of spatial resources related to flooding and flood control can be utilized by the Jury for future planning and resourcing needs. In addition to this effort, revised and new levee alignments and configurations will be investigated, with parameters including costs, timelines, landowners, wetland impacts, and overall benefits accounted for.

FRENCH BRANCH POND EXPANSION STUDY

St. Tammany Parish Government

Project Manager. As Project Manager, Mr. Boudreau was responsible for leading DDG's efforts in assessing the feasibility and efficacy of a new storage pond to be located off of the W-15 (French Branch) Canal. In this position, Mr. Boudreau reviewed modeling results, helped prepare the modeling report and associated benefit cost analysis, interacted with the Client, verified surveying needs, and tracked the project's schedule and budget.

COASTAL MASTER PLANNING *

St. Bernard Parish Government

Project Manager. As Project Manager, Mr. Boudreau was responsible for leading the effort in updating and progressing St. Bernard Parish Government's coastal program strategy, which hadn't been updated in over four (4) years. In this position, Mr. Boudreau engaged with local stakeholders, helped identify and expand upon current potential projects of interest, suggested alternatives and modifications to existing plans, and provided judgment of anticipated permitting requirements, potential risks, and required mitigation measures associated with each project. Additional tasks also included reviewing funding opportunities for each project and reviewing, refining, and developing costs for projects related to ridge restoration, marsh creation, swamp reforestation, oyster barrier reef installation, shoreline protection, levee armoring, marine debris removal, and maintenance dredging projects. The final culmination of the program was a comprehensive planning report listing 23 projects ranging in costs from \$50K to \$50M.

* Experience Prior to DDG

AVAILABILITY

Throughout duration of Project

CONTACT

T: 225.751.4490

E: aboudreau@ddgpc.com

EDUCATION

M.S., Civil Engineering, 2013,
Louisiana State University

B.S., Biosystems Engineering, 2011,
Clemson University, Minor in
Environmental Engineering

Certification, Coastal Engineering,
2017, University of New Orleans

Ocean and Coastal Engineering -
December 2015

Design of Coastal and Hydraulic
Structures - May 2016

Coastal Processes -
December 2016

Sediment Transport and
Dredging - May 2017

EXPERIENCE

9+ Years of Experience

WITH DDG

2023 to Present

CERTIFICATIONS

Licensed Professional
Engineering, LA #42737

TEC Professional Services Questionnaire

KEY PERSON, SPECIALIST, OR INDIVIDUAL CONSULTANT:
Name & Title:
Bryan Olinger Environmental + Regulatory Lead
Project Assignment:
Environmental + Regulatory Lead
Name of Firm with which associated:
Duplantis Design Group, PC
Years' experience with this firm:
1 Year
Education: Degree(s)/Year/Specialization:
Bachelor of Science in Resource Biology + Biodiversity, 2012, University of Louisiana Lafayette
Active registration: Year first registered/discipline:
N/A
Other experience and qualifications relevant to the proposed Project:
<p>GOMESA Flood Protection Levee Improvements Assumption Parish, LA</p> <p>Louisiana Mitigation Bank LA</p> <p>Bayou Bonfouca Detention Pond St. Tammany Parish, LA</p> <p>Bayou Boyle Detention Pond Ascension Parish, LA</p> <p>Cypress Bayou Green Infrastructure Project East Baton Rouge Parish, LA</p> <p>Carbon Capture and Sequestration Projects Specific Client and Project Information Confidential due to Current NDA's</p> <p>Blue Ammonia Projects Specific Client and Project Information Confidential due to Current NDA's</p> <p>40,000+ Acres of Wetland Mitigation Specific Client and Project Information Confidential due to Current NDA's</p> <p>Bayou Terrebonne Biodiversity + Resiliency CSR Projects*</p> <p>* Experience Prior To DDG</p>

BRYAN OLINGER

ENVIRONMENTAL + REGULATORY LEAD



Bryan is a project manager and environmental biologist with over 12 years of experience in environmental permitting in the public and private sectors, and a background in academic research. He has experience in both data gathering and permitting of long, linear projects in the energy sector, and has expertise in all facets of mitigation bank and PRM project development and implementation. He has worked on over 50,000 acres in multiple states performing wetland delineations, overseeing planting operations, monitoring native and invasive species, and managing forested, coastal prairie, grasslands, and long-leaf pine savanna habitats and reporting on their status’. In the alternative energy sector, he has experience creating vegetation management plans for post-construction reclamation of native grassland vegetation and habitats.

AREAS OF EXPERTISE

- Wetland Delineations
 - USACE Sec. 404/10 Permitting
 - Wildlife + Habitat Management
- Ecology + Ecosystems of the Gulf South
 - Wetland Mitigation Project Design
 - Wetland Policy + Management

RELEVANT PROJECT EXPERIENCE

GOMESA FLOOD PROTECTION LEVEE IMPROVEMENTS

Assumption Parish Police Jury
Regulatory + Environmental Lead. DDG was contracted to provide the engineering and design of various levee systems in Assumption Parish; as like many coastal areas within Louisiana, Assumption Parish regularly floods due to both significant rainfall and surge events. The effort that DDG is currently undertaking is the surveying and recordation of existing levee systems and associated pump stations such that a digital repository of spatial resources related to flooding and flood control can be utilized by the Jury for future planning and resourcing needs. In addition to this effort, revised and new levee alignments and configurations will be investigated, with parameters including costs, timelines, landowners, wetland impacts, and overall benefits accounted for.

LOUISIANA MITIGATION BANK
Involved in the acquisition, permitting, design, implementation, management, field operations and/or long-term stewardship and maintenance of the following mitigation banks, PRM sites and CSR project sites with varying habitat types and regulatory requirements.

BAYOU BONFOUCA DETENTION POND
St. Tammany Parish Government
Regulatory + Environmental Lead. Responsible for overseeing the data collection, reporting and submission to obtain local, state, and federal regulatory permits required for the construction of a detention pond designed to reduce flood risks to the local community.

BAYOU BOYLE DETENTION POND
Ascension Parish Government
Regulatory + Environmental Lead. Bryan’s role included overseeing the data collection, reporting and submission to obtain local, state, and federal regulatory permits required for the construction of a detention pond designed to reduce flood risks to the local community.

BAYOU TERREBONNE BIODIVERSITY + RESILIENCY CSR PROJECTS*
Served as the regulatory lead in developing a proposal for both projects for a client. One project was a planting in the Pointe-aux-Chene Wildlife Management Area, which encompassed the planting of 31,000 bald-cypress trees. The second project included permitting, designing, monitoring and maintenance of 9,000 linear feet of earthen terrace within a 50-acre project foot print.

* Experience Prior to DDG

AVAILABILITY

Throughout duration of Project

CONTACT

O: 337.233.9914

E: bolinger@ddgpc.com

EDUCATION

B.S. Civil Engineering, 2019,

Louisiana State University

EXPERIENCE

12+ Years of Experience

WITH DDG

2023 to Present

CERTIFICATIONS

Burn Manager

Wetland Delineator

TEC Professional Services Questionnaire

KEY PERSON, SPECIALIST, OR INDIVIDUAL CONSULTANT:

Name & Title:

Cory MacMenamin, PLS, MBA
Vice President of Survey + Partner

Project Assignment:

Survey Lead

Name of Firm with which associated:

Duplantis Design Group, PC

Years' experience with this firm:

5 Years

Education: Degree(s)/Year/Specialization:

Associates in Land Surveying, 2008, Community College of Southern Nevada
Bachelors in Business Management, 2019, Southeastern University
Survey + Mapping, 2020, University of Wyoming
UAS Part 107 Remote Pilot, 2020
Masters of Business Administration, 2024, Southeastern Louisiana University

Active registration: Year first registered/discipline:

Licensed in 2021/ Professional Land Surveyor/ Land Surveying #5269

Other experience and qualifications relevant to the proposed Project:

Flat Lake Sediment Management Study | St. Martin Parish, LA
Grand Canard Mitigation Bank Hydrologic Study | Ascension Parish, LA
Lake Borgne Marsh Creation | St. Bernard Parish, LA
Bayou Bonfouca Regional Detention Pond | St. Tammany Parish, LA
Des Allemands Boat Launch | Des Allemands, LA
Spanish Pass Ridge And March Creation | Plaquemines Parish, LA
St. Martin Parish Drainage Improvements | St. Martin Parish, LA
Lafayette Drainage Initiative | Lafayette, LA
Suburban Canal and Canal No. 2 - Jefferson Parish Government | Jefferson Parish, LA*

* Experience Prior To DDG

CORY MACMENAMIN, PLS, MBA

SURVEY LEAD



The DDG Surveying Division is managed from DDG's Covington office by Cory MacMenamin. Having surveyed with his father since he was a boy, he has experienced many different facets of the industry, and he appreciates the historical significance of the survey profession and the challenges it faces as technological advancements shape its future. He has performed many different types of surveys ranging across multiple states and specialties. He has also worked on master planning, industrial, commercial, and residential projects throughout the state of Louisiana as well as projects in Mississippi, Alabama, Florida and Nevada.

AREAS OF EXPERTISE

- Topographic Surveying
- Hydrographic Surveys
- Drone Licensed Pilot

RELEVANT PROJECT EXPERIENCE

FLAT LAKE SEDIMENT MANAGEMENT STUDY

Coastal Protection and Restoration Authority (CPRA)

Survey Lead. DDG's survey team performed a hydrographic survey and geophysical survey of the 3,200-acre lake with 1,000-foot transects using Hydrographic, Sidescan Sonar, Magnetometer, Sub-bottom profiler. Using collected data, DDG will prepare a depth map of the lake.

GRAND CANARD MITIGATION BANK HYDRO STUDY

Resource Environmental Solutions, LLC

Survey Lead. DDG is providing design services to construct a water control system that will optimize the mitigation bank's hydrology. Data collection activities include collection and processing of monitoring data from five (5) HOBO Water Level Loggers throughout the site and surveying topography, hydrographic, and the five (5) HOBOS. 250 acres.

LAKE BORGNE MARSH CREATION

Coastal Protection and Restoration Authority (CPRA)

Survey Lead. The DDG survey team has performed quality control surveys during construction to ensure project milestones were met and design features were constructed per plan. Once the survey was completed a hydro-survey technician reviewed data and exported post-processed data to Civil 3D for a draftsman to produce plan and profile deliverables. DDG utilizes Airboats, surface drive and standard survey vessels outfitted with echo-sounders, a magnetometer and side scan sonar to complete the survey tasks for this project.

BAYOU BONFOUCA REGIONAL DETENTION POND

St. Tammany Parish Government

Survey Lead. DDG is providing survey and engineering services to design an approximately 100-acre pond for the Bayou Bonfouca Regional Detention Pond project. The existing STP Water Management Study will be utilized. Surveying scope includes hydrographic/bathymetric survey, property boundary survey, topographic survey, and ROW Mapping.

DES ALLEMANDS BOAT LAUNCH

St. Charles Parish Government

Survey Lead. DDG is providing engineering and design, marine surveys, project management, architectural and landscape architectural services, construction administration and inspection services for the development of an access road, boat launch, and parking area. The project site is approximately 110 acres along LA Hwy 632, adjacent to Des Allemands Elementary. Improvements include the park entryway, limestone access road, parking lot, four (4) stall boat launch, restroom facility, and gazebo.

AVAILABILITY

Throughout duration of Project

CONTACT

T: 985.249.6180

E: cmacmenamin@ddgpc.com

EDUCATION

Associates in Land Surveying, 2008,
Community College of Southern
Nevada

Bachelors in Business Management,
2019, Southeastern University

Survey + Mapping, 2020, University of
Wyoming

UAS Part 107 Remote Pilot, 2020

Masters of Business Administration,
2024, Southeastern Louisiana
University

EXPERIENCE

25+ Years of Experience

WITH DDG

2019 to Present

CERTIFICATIONS

Professional Land Surveyor
- Louisiana, #5269

Drone Pilot

TEC Professional Services Questionnaire

KEY PERSON, SPECIALIST, OR INDIVIDUAL CONSULTANT:
Name & Title:
Stephanie Phillips Gros, PE, PTOE Grant Writing Lead + Principal
Project Assignment:
Grant Writing Lead
Name of Firm with which associated:
Duplantis Design Group, PC
Years' experience with this firm:
<1 Year
Education: Degree(s)/Year/Specialization:
Bachelor of Science in Civil and Environmental Engineering, 2008, Louisiana State University
Active registration: Year first registered/discipline:
Professional Traffic Operations Engineer #4864 Licensed in 2013/ Licensed Professional Engineer/ Civil Engineering #38692
Other experience and qualifications relevant to the proposed Project:
<p>South East Arkansas and North East Rail INFRA Grant Application and Environmental Document*</p> <p>St. Bernard Port North-South Intermodal Connector Road EDA Grant *</p> <p>LADOTD Stage 0 Retainer *</p> <p>MOVEBR Transportation Plan *</p> <p>Calcasieu Parish Transportation Initiative (CPTI) *</p> <p>LA 59 at Lonesome Road Roundabout *</p> <p>Canal Street Bridge (QA/QC)</p> <p>N. St. Antoine Extension - 4 Bridges (QA/QC)</p> <p>Lafayette Off-System Bridge Replacement Contract *</p> <p>Bridge Improvement Program Funding and Identification for City of Lafayette - 10 bridge replacements *</p> <p>US 190 Road + Bridge Improvements: LA 437 to US 190B LADOTD *</p> <p>LADOTD / Houma-Thibodaux to LA 3127 Hurricane Evacuation EIS - LADOTD *</p> <p>I-49 Connector</p> <p>Bluebonnet Boulevard - Streetscapes and Roundabouts Baton Rouge, LA *</p> <p>US 61(Airline Highway) Widening and Intersection Design - Baton Rouge, LA *</p> <p><i>* Prior to DDG</i></p>

STEPHANIE PHILLIPS GROS, PE, PTOE

GRANT WRITING LEAD + PRINCIPAL



AVAILABILITY

Throughout duration of Project

CONTACT

T: 225.751.4490

E: sphillips@ddgpc.com

EDUCATION

Bachelor of Science in Civil and Environmental Engineering, 2008, Louisiana State University

EXPERIENCE

16+ Years of Experience

WITH DDG

2023 to Present

CERTIFICATIONS

Licensed Professional Engineering, LA #38692

Professional Traffic Operations Engineer #4864

Licensed in PE: 2013

and PTOE: 2020

Ms. Phillips has led a variety of projects from identification, preliminary needs, project feasibility, design, and construction for public agencies. She has managed all aspects of project delivery, including planning, environmental documentation, funding/grant administration, cost estimation, permitting, and public/stakeholder outreach. The success of several projects has heavily relied on advocating for better communication between state and local agencies, governmental entities, and private clients, early communication, and streamlining processes. Ensuring that the client has a complete understanding of funding, process, policy, permitting, show-stopping constraints, and programmatic timeline restrictions has been essential to each project's successful implementation. She has assisted with policy writing for several DOTD's in Pennsylvania and Mississippi, and lead grant applications for INFRA (SEAEDD), BUILD, STP, EDA, and several others.

RELEVANT PROJECT EXPERIENCE

SOUTH EAST ARKANSAS AND NORTH EAST RAIL INFRA GRANT APPLICATION AND ENVIRONMENTAL DOCUMENT, REGIONAL - VARIOUS LOCATIONS

Project Manager on INFRA application for rail line from NE Louisiana to SE Arkansas. As a follow up to our effort in assisting the consortium in securing \$10M on funding through the INFRA program, we provided Environmental and GIS services.

ST. BERNARD PORT NORTH-SOUTH INTERMODAL CONNECTOR ROAD EDA GRANT- ST. BERNARD PARISH, LA

Grant Application Lead for a north- south connector from Judge Perez Drive to St. Bernard Highway. In addition to connecting two highways, the road provides north-south connectivity to the Port of St. Bernard and completes one phase of a master planned Florida Avenue Extension. The new roadway will open land up for development and provide an alternate ingress/egress for the hospitals they renovate and expand services. Ms. Phillips worked with the future and existing tenant, the Port, other stakeholders, and regional planning office.

440004012 - LADOTD STAGE 0 RETAINER - STATEWIDE, LA

Project manager responsible for scoping, project implementation plans, inter-department coordination, local/state/federal agency coordination, and contract/project execution of several task orders (a total of 10) to provide statewide feasibility/planning services under a five-year retainer contract, in accordance with current LADOTD guidelines.

MOVEBR TRANSPORTATION PLAN - BATON ROUGE, LA

Program manager and pre-construction QA/QC lead responsible for the project management of the two largest projects in the program (Airline North and Airline South) and overall QAQC/consistency of programmatic policies. She assists in leadership of the program, cost estimation, financial modeling, budgets, design standards, and focuses on overall constructibility/feasibility of projects. As a part of her project management tasks, she has assisted with a large BUILD/INFRA grants and STP >200k applications, including cost estimation, identification of project goals, economic development and feasibility.

CALCASIEU PARISH TRANSPORTATION INITIATIVE (CPTI) - LAKE CHARLES, LA

Senior program manager responsible for the overall project delivery and QC/QA program to provide design policies, procedures, standards and guidelines in the preparation and review of all design products. The CPTI is a comprehensive transportation improvement program to environmentally permit, design, and construct transportation improvements on state routes within Calcasieu Parish.

H.011030 - LA 59 AT LONESOME ROAD ROUNDABOUT - MANDEVILLE, LA

Project Design Lead- Engineer responsible for the development of the conceptual layout, preliminary design, and final design of the asphalt roundabout in St. Tammany Parish. Phillips' efforts included developing a roundabout configuration that met the minimum LADOTD design guidelines while addressing existing traffic, safety, and flood elevation challenges within the project area, which was achieved through evaluating existing traffic, crash data, nearby bridges, and waterway elevations to identify the logical horizontal and vertical geometry for the roundabout.

TEC Professional Services Questionnaire

KEY PERSON, SPECIALIST, OR INDIVIDUAL CONSULTANT:
Name & Title:
Kyle Brunet CAD Designer
Project Assignment:
CAD Support
Name of Firm with which associated:
Duplantis Design Group, PC
Years' experience with this firm:
1 Year
Education: Degree(s)/Year/Specialization:
Bachelor of Science in Industrial Technology, 2019, University of Louisiana
Active registration: Year first registered/discipline:
N/A
Other experience and qualifications relevant to the proposed Project:
Lake Borgne Marsh Creation St. Bernard Parish, LA Lower W-15 Basin Drainage Improvements St. Tammany Parish Government Des Allemands Boat Launch Des Allemands, LA Commonwealth LNG BUDM Marsh Creation Cameron Parish, LA

KYLE BRUNET

CAD DESIGNER



Kyle is responsible for construction inspection, data collection, and assisting in the design and management of projects within DDG’s coastal department. He has worked on various projects gaining exposure to both public and private sector client needs. Kyle’s main focus while at DDG has been projects in coastal restoration and drainage improvements. Through his career, he has acquired valuable skills in design, inspection, and teamwork, that contribute to the development of well-planned designs and high-quality drawing packages.

AREAS OF EXPERTISE

- AutoCAD
- Construction Inspection
- Program + Project Management

RELEVANT PROJECT EXPERIENCE

LAKE BORGNE MARSH CREATION

Coastal Protection and Restoration Authorit

Assists with the construction administration, design, and inspection of this ongoing project, which is a marsh creation project with the main objective of re-creating and nourishing approximately 2,769 acres of marsh on the western shoreline of Lake Borgne

LOWER W-15 BASIN DRAINAGE IMPROVEMENTS

St. Tammany Parish Government

Assisted with construction administration and inspection of this project. The enhancements encompassed the widening of the Lower W-15 Drainage Canal and the construction of a 324-acre detention pond to reduce flooding to the surrounding communities

DES ALLEMANDS BOAT LAUNCH

St. Charles Parish Government

Assisted with the design and inspection services of this project. The project includes the construction of a new road, boat launch, and facilities in St. Charles Parish.

COMMONWEALTH LNG BUDM MARSH CREATION

Commonwealth LNG, LLC

Set up HOBO data loggers to monitor water levels throughout the project site during design. The project is a aims to create approximately 640 acres of marsh near Calcasieu Lake in Cameron Parish.

AVAILABILITY

Throughout duration of Project

CONTACT

O: 985.249.6180
E: kbrunet@ddgpc.com

EDUCATION

B.S. in Industrial Technology, 2019,
University of Louisiana

EXPERIENCE

3 Years of Experience


WITH DDG

2023 to Present


CERTIFICATIONS

N/A

TEC Professional Services Questionnaire

PROJECT NO. 1		
Project Name, Location and Owner's contact information:	Nature of Firm's Responsibility:	
<p>LAKE BORGNE MARSH CREATION</p> <p>St. Bernard Parish, LA</p> <p>Coastal Protection + Restoration Authority</p> <p>Ms. Vida Carver, PE 150 Terrace Ave Baton Rouge, LA 70802 225.342.2799</p>	<p>PROJECT HIGHLIGHTS:</p> <ul style="list-style-type: none"> • 134,822 LF of Earthen Containment Dikes • Largest Louisiana Marsh Creation Project to Date • Joint Permit Application, Environmental Information Document, Biological Evaluation, Section 404 Permit • 8 Marsh Creation Cells <p>The Lake Borgne Marsh Creation (LBMC) Project Increment One is one of six projects selected through the Natural Resources Damage Assessment (NRDA) process to mitigate impacts as a result of with the Deepwater Horizon Oil Spill. As outlined in the Final Restoration Plan dated January 2017 prepared by the Louisiana Trustee Implementation Group (TIG), the Plan focuses on the implementation of the large-scale marsh creation projects due to the immediate benefits to coastal habitats directly impacted by the oil spill. This specific project is anticipated to create approximately 3,700 acres of marsh with an anticipated construction budget of \$62M. When completed, the project will represent one of the largest marsh creation projects to be implemented by the Coastal Protection and Restoration Authority (CPRA) to date. Borrow material for the marsh creation is procured from Lake Borgne; however, an evaluation of borrow material from the Mississippi River, as well as Mobile (Alabama) Sands were considered in the design of the project. The marsh creation area will extend from the eastern shore of the Bayou Yscloskey approximately 4.3 miles to the east toward Lena Lagoon. As the lead engineer & project manager, DDG has coordinated all data collection activities including topographic, bathymetric, magnetometer, and side-scan survey; geotechnical data collection, and environmental data collection analysis to define the marsh creation borrow and fill areas, prepare detailed designs and cost estimates, obtained all required regulatory permits, and supported bidding services. DDG is currently performing construction administration and full-time inspection services on behalf of CPRA. The project is expected to be completed in Q4 2025.</p> 	
Completion Date (Actual or Estimated):	Estimated Cost:	
	Entire Project:	Work for which Firm was Responsible:
TBD	\$75,326,304	\$1,030,240

TEC Professional Services Questionnaire

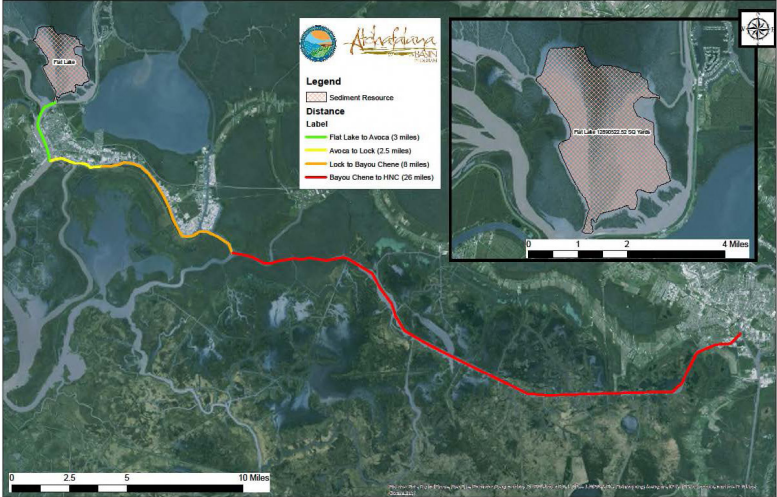
PROJECT NO. 2		
<p>Project Name, Location and Owner's contact information:</p> <p>LOWER W-15 BASIN DRAINAGE IMPROVEMENTS</p> <p>St. Tammany Parish, LA</p> <p>St. Tammany Parish Government Kelly Rabalais (CAO) 21454 Koop Drive; Ste 2F Mandeville, LA 70471 krabalais@stpgov.com 985.898.2700</p>	<p>Nature of Firm's Responsibility:</p> <p>PROJECT HIGHLIGHTS:</p> <div style="display: flex; justify-content: space-between;"> <ul style="list-style-type: none"> Topobathymetric Surveying H&H Modeling Pond + Outfall Design Construction Administration <ul style="list-style-type: none"> Hazard Mitigation Alternative Analysis Benefit Cost Analysis </div> <p>Due to the increase in land development and inadequate stormwater conveyance, the W-15 Drainage Basin in St. Tammany Parish, Louisiana experiences significant flooding. Beginning in 2011, DDG developed a comprehensive plan for drainage improvements. The project consisted of preparing a HEC-RAS and HEC-HMS for a project area of 35-square miles that encompasses three separate but interconnected basins including W-15 Canal, W-14 Canal, and Gum Bayou Basin. Utilizing previous model data from the Southeast Louisiana Urban Flood Control Project (SELA) as well as newly acquired topographic and bathymetric data, models were developed to understand existing flooding conditions and to evaluate various alternatives for improving flood conveyance and storage. A total of 27 different alternatives were evaluated to determine the most economical solution to alleviate the existing flooding problems in different parts of the basin. A Benefit Cost Analysis (BCA) was prepared for FEMA to facilitate the award of Hazard Mitigation Grant Program (HMGP) funds.</p> <p>The recommended project included the construction of a 324-acre regional detention pond and cleaning and widening of approximately 3 miles of the W-15 Canal. This project accomplishes two objectives: reducing peak runoff to the W-15 Canal downstream of the Tenet Pond and increasing the conveyance capacity of the W-15 Canal. These two project elements effectively reduce the water surface elevations along the W-15 Canal thereby reducing impacts to structures throughout the W-15 Basin. DDG provided engineering services to St. Tammany Parish that included engineering design, permitting, preparation of bid documents and construction inspection.</p> 	
<p>Completion Date (Actual or Estimated):</p>	<p>Estimated Cost:</p>	
<p>Detention Pond Completed: 12/19 Canal Improvements Completed: 2021</p>	<p>Entire Project:</p> <p>\$7,000,000</p>	<p>Work for which Firm was Responsible:</p> <p>\$136,000</p>

TEC Professional Services Questionnaire

PROJECT NO. 3								
Project Name, Location and Owner's contact information:		Nature of Firm's Responsibility:						
<p>BAYOU BONFOUCA MARSH CREATION</p> <p>St. Tammany Parish, LA</p> <p>Coastal Protection and Restoration Authority Shannon Haynes, PE 150 Terrace Ave Baton Rouge, LA 70802 225.766.7400</p>		<p>PROJECT HIGHLIGHTS:</p> <ul style="list-style-type: none"> • 591 Acre of Marsh Creation • Entitlements • Construction Administration • Shoreline Protection <p>DDG has been hired by CPRA as a sub-consultant to Providence Engineering's IDIQ to perform the construction administration on the Bayou Bonfouca Marsh Creation Project near Slidell, LA. The primary goal of the project is to create 600 acres and nourish over 200 acres of low salinity brackish marsh in open water areas adjacent to Bayou Bonfouca with sediment pumped from Lake Pontchartrain. This project will consist of placing sediment, hydraulically dredged from Lake Pontchartrain, in open water sites to a height of +1.2 NAVD 88. Several historic marsh ponds have been identified and would be restored. Tidal creeks were also designed to connect these ponds to facilitate water exchange and access to fisheries. In addition, shoreline protection was provided using articulated concrete block mats for a portion of the containment dike exposed to open water. Containment dikes will be sufficiently gapped or degraded to allow for fisheries access no later than three (3) years post construction. DDG is responsible for construction administration duties which include review of shop drawings and submittals, preparation of field changes, change orders, review of invoices (including Davis Bacon Act responsibilities) construction progress meetings, and final inspections.</p> <p>DDG assisted CPRA with design for a shoreline component aimed at improving the resiliency of the marsh creation project. The protection utilized Articulate Concrete Mats (ACM) designed to absorb and deflect wave energy and decrease erosion at the marsh creation site.</p> <p>*Joseph Guillory, PE, Professional-in-Charge, also served as a member on the design team for Bayou Bonfouca Marsh Creation while employed at CPRA.</p> 						
Completion Date (Actual or Estimated):		Estimated Cost:						
		<table border="1"> <tr> <td>Entire Project:</td> <td>Work for which Firm was Responsible:</td> </tr> <tr> <td>2020</td> <td> <table border="1"> <tr> <td>\$23,800,000</td> <td>\$149,173</td> </tr> </table> </td> </tr> </table>	Entire Project:	Work for which Firm was Responsible:	2020	<table border="1"> <tr> <td>\$23,800,000</td> <td>\$149,173</td> </tr> </table>	\$23,800,000	\$149,173
Entire Project:	Work for which Firm was Responsible:							
2020	<table border="1"> <tr> <td>\$23,800,000</td> <td>\$149,173</td> </tr> </table>	\$23,800,000	\$149,173					
\$23,800,000	\$149,173							

TEC Professional Services Questionnaire

PROJECT NO. 4

Project Name, Location and Owner's contact information:	Nature of Firm's Responsibility:	
<p>FLAT LAKE SEDIMENT MANAGEMENT STUDY</p> <p>St. Martin Parish, LA</p> <p>Coastal Protection + Restoration Authority (CPRA) Shannon Haynes, PE 150 Terrace Avenue Baton Rouge, LA 70802 shannon.haynes@la.gov 225.766.7400</p>	<p>PROJECT HIGHLIGHTS:</p> <ul style="list-style-type: none"> • Hydrographic Survey • Magnetometer • Mapping, Cross-Sections, + Data Sets • Side Scan Sonar • Sub Bottom Profiler • Geophysical Survey <p>For this project DDG Survey outfitted an 18' center console with a Kongsberg Multibeam Sonar, Simrad EK60 Echosounder, Applanix POSMV Surfmaster GNSS/INS IMU, Geometrics G882 Magnetometer, and an Edgetech 3100p Sub-Bottom Profiler. The smaller craft was required to access an extremely shallow lake and perform the requested survey in less than ideal conditions. After the data was collected DDG processed the results in HYPACK and delivered the information to R. Christopher Goodwin & Associates once Archaeological and Geophysical analysis were complete our team will provided a report to CPRA detailing the bottom depth and materials composition as well as clearing the site for any Archaeological materials.</p> <p>DDG's coastal team conducted a sediment management study to analyze the lakebed sediments. The goals of the study are to support the design of a restoration project to rehabilitate habitat, improve biological conditions, and re-establish access for the benefit of public use. DDG's survey team performed a hydrographic survey of the 3,200-acre lake with 1,000-foot transects. DDG consulted with S&ME for Geotechnical services and R. Christopher Goodwin & Associates Inc. for Cultural/Geophysical services. DDG's coastal team then processed and analyzed all data collected and provided a detailed report to CPRA.</p> 	
Completion Date (Actual or Estimated):	Estimated Cost:	
2021	Entire Project:	Work for which Firm was Responsible:
	N/A - Study Only	\$283,989

TEC Professional Services Questionnaire

PROJECT NO. 5						
<p>Project Name, Location and Owner's contact information:</p> <p>W-14 DRAINAGE IMPROVEMENTS + FRITCHIE MARSH HYDROLOGIC RESTORATION</p> <p>St. Tammany Parish, LA</p> <p>St. Tammany Parish Government Kelly Rabalais, CAO (Gina Campo - Former CAO) 21454 Koop Drive, Suite 2F Mandeville, LA 70471 985.898.2700 krabalais@stp.gov.com</p>	<p>Nature of Firm's Responsibility:</p> <p>PROJECT HIGHLIGHTS:</p> <ul style="list-style-type: none"> Water Level Monitoring Pond + Outfall Design Flood Risk Reduction Alternatives Analysis 1D/2D H+H Modeling Construction Administration Channel Improvements Grant Administration <p>Due to increases in land development, insufficient stormwater conveyance systems, and worsening tail water conditions due to sea level rise, there are significant drainage problems in the W-14 Basin resulting in significant street and structure flooding during severe rain events. DDG worked with St. Tammany Parish Government to obtain HMGP grant funding to reduce the risk of flooding for people residing in the W-14 basin while simultaneously reducing the marsh loss rates in the Fritchier Marsh.</p> <p>The DDG team utilized an unsteady state HEC-RAS model of the W-14 Basin to evaluate the extent of existing flooding and to conduct an analysis of project alternatives. Flood reduction will be accomplished by widening approximately 3,250 feet of the W-14 Canal and constructing a regional detention pond to mitigate increases in downstream discharge resulting from improved conveyance. Based on the numerical model results, DDG performed a Benefit Cost Analysis (BCA) for the W-14 Basin to secure funding of the identified drainage improvements.</p> <p>In addition to the HEC-RAS modeling, a 2D water surface model (MIKE FLOOD) of the Fritchier Marsh was developed in coordination with the Water Institute of the Gulf. Wetlands will be enhanced in the future by improving conveyance of freshwater and nutrients from the W-14 Basin to the Fritchier Marsh. DDG continues to coordinate with state and federal agencies through the CWPRA program to improve the circulations patterns and therefore the health of the Fritchier Marsh.</p> <div style="text-align: center;">  </div>					
<p>Completion Date (Actual or Estimated):</p>	<p style="background-color: #005596; color: white; text-align: center; padding: 2px;">Estimated Cost:</p> <table border="1" style="width: 100%; border-collapse: collapse;"> <tr> <td style="width: 50%; text-align: center; padding: 5px;">Entire Project:</td> <td style="width: 50%; text-align: center; padding: 5px;">Work for which Firm was Responsible:</td> </tr> <tr> <td style="text-align: center; padding: 5px;">\$3,425,000</td> <td style="text-align: center; padding: 5px;">\$642,334</td> </tr> </table>		Entire Project:	Work for which Firm was Responsible:	\$3,425,000	\$642,334
Entire Project:	Work for which Firm was Responsible:					
\$3,425,000	\$642,334					
<p>Construction: TBD Completion Date: 2016 - Ongoing</p>						

TEC Professional Services Questionnaire


PROJECT NO. 6						
Project Name, Location and Owner's contact information:		Nature of Firm's Responsibility:				
<p>LA 22 GAPPING PROJECT</p> <p>Ascension Parish, LA</p> <p>McKim + Creed, Inc. Kimberly Koehl 1022 South Purpera Avenue Gonzales, LA 70737 kkoehl@mckimcreed.com 225.644.5523</p>		<p>PROJECT HIGHLIGHTS:</p> <ul style="list-style-type: none"> • LWI Funded • Flood Risk Reduction • Levee Enhancement • 2D Modeling • Wetland Restoration <p>DDG prepared hydrologic and hydraulic analyses and support documentation for the LA 22 Gapping Project which included assessing the implementation of proposed excavations and bridges at LA Highway 22 (LA 22) in a hydraulic model. Portions of Ascension and Livingston Parishes were inundated during and following the August 2016 Flood. A deficiency in the conveyance of floodwaters through LA 22 was identified as a pinch point for high water elevations to develop and inundate nearby structures during storm events. The proposed excavation and LA 22 bridge sections are located between the existing Laurel Ridge Levee / Marvin J Braud North Levee and the Amite River Diversion Canal (ARDC).</p> <p>For this effort, DDG was tasked with identifying and assessing three variations of proposed cuts and bridge sections of LA 22 independent of the Comite River Diversion while utilizing the previous HEC-RAS model. The existing conditions model was updated to include several structures along the ARDC that were originally excluded in the ARBNM and the proposed LRLE Project. Along with a new existing conditions simulation, the three variations of proposed cuts and bridge sections of LA 22 included: (1) two gaps in LA 22 (one on the west and one on the east); (2) one gap on the west; and (3) one gap on the east.</p> 				
Completion Date (Actual or Estimated):		Estimated Cost:				
		<table border="1"> <thead> <tr> <th>Entire Project:</th> <th>Work for which Firm was Responsible:</th> </tr> </thead> <tbody> <tr> <td>\$42,000,000</td> <td>\$156,560</td> </tr> </tbody> </table>	Entire Project:	Work for which Firm was Responsible:	\$42,000,000	\$156,560
Entire Project:	Work for which Firm was Responsible:					
\$42,000,000	\$156,560					
2017						

TEC Professional Services Questionnaire

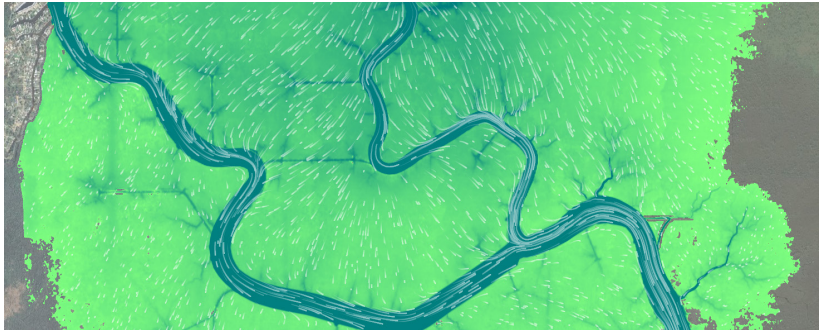
PROJECT NO. 7		
Project Name, Location and Owner's contact information:	Nature of Firm's Responsibility:	
<p>GOMESA ASSUMPTION PARISH FLOOD PROTECTION LEVEE IMPROVEMENTS</p> <p>Assumption Parish, LA</p> <p>Assumption Parish Police Jury Leroy Blanchard (APPJ President) 4813 LA-1 Napoleonville, LA 70390 985.369.7435 leroyblanchard@assumptionla.com</p>	<p>PROJECT HIGHLIGHTS:</p> <ul style="list-style-type: none"> Flood Reduction Strategies <p>Like many low-lying, coastal areas within Louisiana, many locations within Assumption Parish are at high risk of flooding due to both local significant rainfall events and as nearby major rivers such as the Atchafalaya River swell. Owing to this risk, Assumption Parish has periodically constructed emergency levee systems to protect their constituents and infrastructure; these ad hoc levee systems, while offering immediate protection, have often gone unrecorded and have resulted in accelerated maintenance responsibilities as these levee systems historically haven't been built via sound engineering principles. As such, DDG was contracted by the Assumption Parish Police Jury (APPJ) to help survey their levee systems and provide engineering and design recommendations that would allow APPJ to spend their limited funding wisely.</p> <p>Services performed to date have included the surveying of sixteen (16) distinct ring levee segments across three (3) different Parish Wards, the creation of a digital repository of spatial resources for flood control, and preliminary drafting of plans, profiles, and cross-sections for each of the different segments. Via this project effort, DDG was also later tasked with securing two (2) joint permits that had previously stalled with other consultants hired by APPJ. In addition to surveying, drafting, and permitting, DDG has also helped APPJ engage with their stakeholders regarding new proposed levee alignments and has presented at numerous APPJ council meetings. Following preliminary drafting, DDG will explore potential revisions to the existing levee alignments and modifications to the existing levee typicals. This evaluation is likely to consist of various factors such as historical flooding elevations, estimates of slope stability and constructibility, construction costs, implementation timelines, impacts on local landowners and wetlands, and the overall benefits such adjustments would bring.</p>	
Completion Date (Actual or Estimated):	Estimated Cost:	
	Entire Project:	Work for which Firm was Responsible:
Construction: Not Started Completion Date: 2023 - Ongoing	N/A	\$200,860



TEC Professional Services Questionnaire

PROJECT NO. 8								
<p>Project Name, Location and Owner's contact information:</p> <p>GRAND CANARD MITIGATION BANK HYDROLOGIC RESTORATION</p> <p>Jefferson Davis Parish, LA</p> <p>Resource Environmental Solutions, LLC Frank Cuccio 412 N. 4th Street, Suite 300 Baton Rouge, LA 70802 337.288.1497 fcuccio@res.us</p>	<p>Nature of Firm's Responsibility:</p> <p>PROJECT HIGHLIGHTS:</p> <ul style="list-style-type: none"> 2D PCSWMM (unsteady) Model Development Real-Time Data Model Calibration + Validation Hydrologic Restoration <p>The goal of Grand Canard Mitigation Bank - Phase I was the cumulative reestablishment, rehabilitation, and enhancement of 247.2 acres of swamp, bottomland hardwood, and emergent freshwater wetlands of which approximately 3.0 acres will remain as open water and non-mitigation land comprised of remnants of spoil levee and the access road. DDG is providing design services to construct a water control system that will optimize the mitigation bank's hydrology. Data collection activities include collection and processing of monitoring data from five (5) HOBO Water Level Loggers throughout the site and surveying topography, bathymetry, and the five (5) HOBOS. Topography and bathymetric survey was taken with refined resolution along the perimeter of Phase I to accurately replicate the geometry of the spoil levees including gaps which allow water to flood in and drain out. A 2D hydrodynamic model of the mitigation bank was developed and calibrated based on the survey data and measured water level data. The model will be utilized to simulate design alternatives of the water control structure. Once a final design has been determined, DDG will optionally prepare design plans and final construction documents for the structure as well as provide construction administration.</p> <div style="text-align: center;">  </div>							
<p>Completion Date (Actual or Estimated):</p> <p style="text-align: center;">2019</p>	<table border="1" style="width: 100%; border-collapse: collapse;"> <thead> <tr style="background-color: #005580; color: white;"> <th colspan="2" style="padding: 5px;">Estimated Cost:</th> </tr> </thead> <tbody> <tr> <td style="width: 50%; padding: 5px; text-align: center;">Entire Project:</td> <td style="width: 50%; padding: 5px; text-align: center;">Work for which Firm was Responsible:</td> </tr> <tr> <td style="padding: 5px; text-align: center;">N/A</td> <td style="padding: 5px; text-align: center;">\$30,025</td> </tr> </tbody> </table>		Estimated Cost:		Entire Project:	Work for which Firm was Responsible:	N/A	\$30,025
Estimated Cost:								
Entire Project:	Work for which Firm was Responsible:							
N/A	\$30,025							

TEC Professional Services Questionnaire

PROJECT NO. 9		
Project Name, Location and Owner's contact information:	Nature of Firm's Responsibility:	
<p>WILLIAM SOUTH PRM</p> <p>Livingston Parish, Tangipahoa Parish, LA</p> <p>Resource Environmental Solutions, LLC Frank Cuccio 412 N. 4th Street, Suite 300 Baton Rouge, LA 70802 337.288.1497 fcuccio@res.us</p>	<p>PROJECT HIGHLIGHTS:</p> <ul style="list-style-type: none"> • Hydrodynamic Modeling • +/- 3,000 acre site improvements <p>DDG has provided a hydrodynamic study within the Tickfaw River and Natalbany River watersheds in Livingston and Tangipahoa parishes to evaluate proposed improvements to a ± 3,000-acre site. Alternative improvements were assessed for improved connectivity and hydrologic exchange for the rehabilitation, enhancement, and preservation of cypress within the site. The study area is approximately bounded on the northern side by Springfield and Ponchatoula, Kilhan on the west, and Joyce Wildlife Management Area and I-55 on the east with the Lake Maurepas being the ultimate outfall. For development of digital terrain models, DDG collected topographic and bathymetric surveys of Tickfaw River, Natalbany River, Lake Maurepas shoreline and smaller waterways across the site. Observed water level and salinity data was collected and assessed. Upon development of a representative hydrodynamic model of the study area, improvement alternatives were assessed for peak inundation along with inundation durations across the site for multiple rain and surge event simulations.</p> 	
Completion Date (Actual or Estimated):	Estimated Cost:	
	Entire Project:	Work for which Firm was Responsible:
2022 - Ongoing	N/A - Study Only	\$228,000

TEC Professional Services Questionnaire

PROJECT NO. 10

Project Name, Location and Owner's contact information:

MASTER DRAINAGE PLAN FOR MORGANFIELD DEVELOPMENT

Calcasieu Parish, LA

Southern Lifestyle Development

Jeff Foshee - Director of Planning
605 Silverstone Road; Ste 107
Lafayette, LA 70508
337.221.6518
tfoshee@rrcoa.com

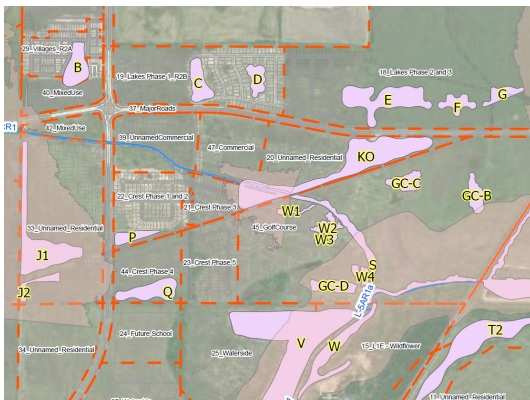
Nature of Firm's Responsibility:

PROJECT HIGHLIGHTS:

- HEC-HMS and HEC-RAS (unsteady) model development
- Regional drainage analysis
- Master drainage plan development
- Coordination with local entities

The MorganField Development is a large-scale mixed-used development (residential and commercial) that is expected to encompass over 2,000 acres in the East McNeese Street Basin in Calcasieu Parish, Louisiana. The development extends from just north of East McNeese Street to Louisiana Hwy 14 to the south and from Corbina Road east to Louisiana Hwy 397 (East Ward Line Road). The proposed development lies in the headwaters of the Kayouchee Coulee and Black Bayou Basins, both of which are sub-basins of the larger East McNeese Street Basin. With multiple development phases, the intent of the MDP is to address how a system of integrated stormwater features (detention ponds, channels, hydraulic structures, etc.) function to prevent increases in flooding both within the boundaries of the development and in receiving waters downstream. Knowledge of the how the complete system functions will inform the phasing and construction of individual stormwater features over time.

DDG is preparing the master drainage plan based on an unsteady HEC-RAS model that was developed for the larger East McNeese Street Basin. This model was updated to represent existing condition and various alternatives were evaluated to develop a drainage plan that meets both the client design criteria and local ordinance requirements. DDG worked with the Calcasieu Police Jury (CPPJ), the City of Lake Charles (City), and the Gravity Drainage District to demonstrate how a larger, regional stormwater plan and system offsets the need for smaller individual detention. Upon development, the MDP will ensure that water surface elevations at all locations with the project area are at or lower than existing conditions.



Completion Date
(Actual or Estimated):

January 2019

Estimated Cost:

Entire Project:

N/A - Master Planning Only

Work for which
Firm was Responsible:

\$91,000

TEC Professional Services Questionnaire

M. List all prior and/or on-going litigation between Firm and Jefferson Parish. Please attach additional pages if necessary.

Parties:		Status/Result of Case:
Plaintiff:	Defendant:	
N/A	N/A	N/A

N. Use this space to provide any additional information or description of resources supporting Firm's qualifications for the proposed project.



THIBODAUX
LAFAYETTE
COVINGTON
BATON ROUGE
NEW ORLEANS
HOUSTON
MOBILE
MISSISSIPPI



170+

EMPLOYEES

16

STATES
LICENSED

4,500+

PROJECTS
COMPLETED

40

LICENSED
PROFESSIONALS

8

OFFICE
LOCATIONS

A LEADING EDGE APPROACH

DDG is a **multi-disciplinary firm** that offers ten (10) service lines: project management, architecture, civil engineering, landscape architecture, coastal engineering, water resources, environmental, surveying, structural engineering, and transportation. DDG has successfully completed over 4,500 projects across the Gulf Coast Region. Whether through our in-house project management and design services or using a network of trusted partner firms, our team's knowledge of material availability and construction practices have been invaluable in early planning decisions. DDG has over two decades of experience managing every aspect of a project. From the initial site assessment and due diligence through the project's substantial completion, DDG's team of design professionals pride themselves not only on the technical aspects of a project, but also on our ability to focus on exceeding a clients' expectations and providing top rated client satisfaction.

OUR SERVICES



N. Use this space to provide any additional information or description of resources supporting Firm's qualifications for the proposed project. (Continued)



CURRENT WORKLOAD + CAPACITY

In over 27 years since our founding, our unwavering commitment to excellent client service has allowed DDG to grow into a multi-disciplinary regional firm with eight offices and over 170 full time employees. DDG's team members span Thibodaux, Baton Rouge, Covington, Lafayette, New Orleans, Mobile, Houston, and Mississippi. DDG's staff has the ability to handle projects of all types and sizes.

Fully leveraging the capacity of DDG's staff will be achieved on an understanding of each individual's expertise, communication of roles and responsibilities, clear assignments, and establishing attainable project milestones. With the key individuals who are assigned to this project backed by resources who are all Louisiana-based, we are dedicated to providing reliable, responsive service on this project. With a total staff of over 170 individuals, annual revenues of almost \$35M, and with the ability to execute hundreds of projects each year, DDG will provide the leadership necessary to ensure the work is delivered on time, on budget, and to the quality expected by Jefferson Parish Government.

DDG has the staff resources available to assign team members to various projects and begin work immediately. At DDG, we pride ourselves on timely service and recognize that our clients' schedules are a fundamental and critical success factor for their projects - particularly when it involves grant monies with time constraints for expenditure. As a result, we realize it is important for all parties to understand the time schedule from day one, and we utilize our staff size, experience and workload to best suit the project schedule.

LICENSED PROFESSIONAL ENGINEERS	27
ENGINEERING INTERNS	14
ENGINEERING PROJECT MANAGERS + CAD	43
CONSTRUCTION INSPECTORS	4
LICENSED LANDSCAPE ARCHITECTS	4
LANDSCAPE ARCHITECTURE - ASSISTANT PROJECT MANAGERS	3
LICENSED ARCHITECTS	9
ARCHITECTURE - PROJECT MANAGERS + ASSISTANT PROJECT MANAGERS	6
PROFESSIONAL LAND SURVEYORS	3
LAND SURVEYING INTERNS	2
SURVEY CREW	24
ENVIRONMENTAL SCIENTISTS + ENVIRONMENTAL SUPPORT	7
WATER RESOURCES ENGINEERS + WR ENGINEERING INTERNS + WR PROJECT MANAGERS	6
ADMINISTRATIVE PROFESSIONALS	23
TEAM MEMBER TOTAL	175

N. Use this space to provide any additional information or description of resources supporting Firm's qualifications for the proposed project. (Continued)



CIVIL ENGINEERING

26

LICENSED
PROFESSIONALS

16

ENGINEERING
INTERNS

16

STATES
LICENSED

The DDG civil engineering group is an industry leader in the planning, design and management of various projects for multiple client types throughout the Gulf Coast. Our firm has successfully worked with numerous private and public sector clients, architectural and development firms, as well as national retailers and industrial users. This broad range of experiences has allowed us to create strong relationships with various local, state, and federal agencies in order to provide the services required to meet the needs of our clients and the agencies themselves. DDG prides itself in strong communication, exceptional customer service and teamwork. DDG's professional civil engineering staff and diverse experience allows us the ability to serve clients in multiple market segments on complex projects.



DDG's general knowledge of the development process as well as their understanding of the St. Tammany Parish regulations has yielded a high level of service to the parish and our staff. DDG has done an excellent job of understanding the specific needs of the client and community and have been able to guide projects toward the end goal.

Gina Campo
Chief Operating Officer
St. Tammany Parish Government

SERVICES

Site Investigation Reports
Due Diligence Coordination
Permitting
Feasibility Studies
Conceptual Site Design
Entitlement Coordination
Permitting
Commercial Site Design
LEED Design and Consultation
Water Distribution Systems
Wastewater Collection
Systems
Stormwater Management
Design
Stormwater Pollution
Prevention Planning
Stormwater Construction
Inspections
Stormwater Construction
Compliance Audits
Construction Administration
Traffic Improvements
Roadway Design
Master Planning
Drainage
Sewer Conveyance Systems
Sewer Assessment
Pump Stations
DOTD Beautification

N. Use this space to provide any additional information or description of resources supporting Firm's qualifications for the proposed project. (Continued)



COASTAL ENGINEERING

Marsh
Creation

Stormwater
Management

Flood Risk
Reduction

Project
Management

Master
Planning

Construction
Administration

Modeling +
Mapping

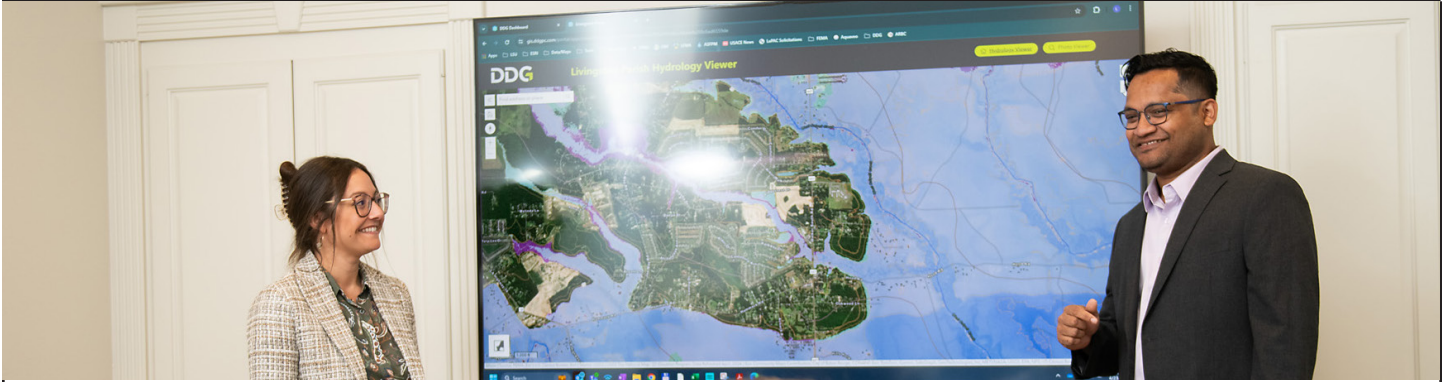
Watershed
Management

RESTORING + PROTECTING

Local Knowledge and Passion Matter. No one knows and understands the Gulf Coast better than the people who live and work here. DDG has been operating on the Gulf Coast for over two decades. We are experienced with numerous coastal projects. DDG is committed to the livelihood of our coast and has extensive knowledge of the terrain, coastline, wildlife and fisheries, and other driving economic factors. DDG'S internal team of coastal experts has over fifty years of combined experience, many of which were in direct alignment with various agencies responsible for the protection of our coastline. Since the inception of DDG'S Coastal Division in 2013, the firm's team has successfully designed over 4,500 acres of marsh creation projects and has worked on an abundance of drainage projects benefiting thousands of homes and families throughout Louisiana.

4,500+ ACRES OF
MARSH
CREATION

N. Use this space to provide any additional information or description of resources supporting Firm's qualifications for the proposed project. (Continued)



WATER RESOURCES

DDG's expertise in hydrology and hydraulics engineering was developed through our years of experience with site development activities across the State, together with our support of local municipalities with flood risk assessments and regional drainage improvement projects. From the retrofit of local drainage infrastructure to the design of regional detention facilities, to conveyance improvements in major waterways, to complete drainage designs for thousands of acres of development, we have done it all.

SERVICES PROVIDED:

- Drainage Impact Studies
- Drainage Impact Analysis
- Hydrologic Modification Impact Analysis
- Letter of Map Revisions
- Benefit-Cost-Analysis
- Conveyance Zone Analysis
- Flood Studies
- No Rise Certifications
- Hazard Mitigation
- Feasibility Studies

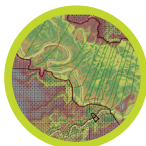
ASSESSMENTS + SOLUTIONS

- Detention / Retention Pond Sizing (*and modifications*)
- Channel / Ditch Sizing (*and modifications*)
- Subsurface Network Sizing (*and modifications*)
- Outlet Control Design (*and modifications*)
- Flood Inundation Mapping (*and modifications*)
- Stormwater Flow Mapping
- Scour Assessments

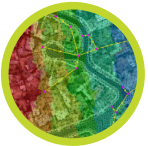
MODELING PROGRAMS



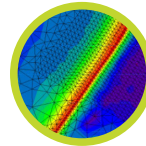
HEC-HMS



HEC-RAS



INFOWORKS ICM



MIKE

COASTAL APPLICATIONS

WAVE ANALYSIS

This model can predict offshore and coastal wave processes and impact.

MORPHOLOGICAL ANALYSIS

This model concentrates on the evolution of earth surface (river, coastal) due to water motion.

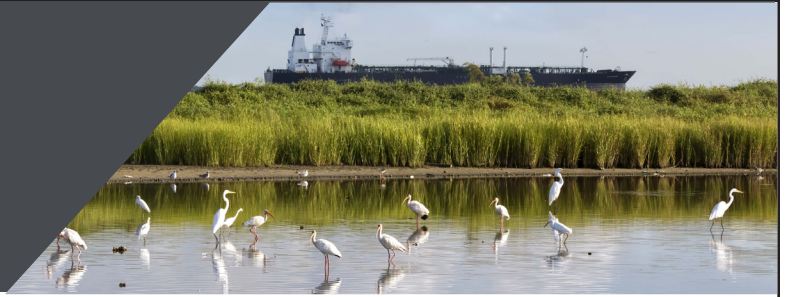
SALINITY ANALYSIS

This model stimulates the amount of dissolved salt in a waterbody.

N. Use this space to provide any additional information or description of resources supporting Firm's qualifications for the proposed project. (Continued)



BROAD VISION. EXPERT FOCUS.



ENVIRONMENTAL + REGULATORY

From planning to compliance, our Environmental + Regulatory Team delivers top-notch project solutions, permits, assessments, and surveys. We offer in-house surveying (aerial, marine and land), watershed modelers, engineers, and landscape architects, which enables us to provide a strong team for integrated project delivery. We have the expertise and experience to provide support in the coastal, industrial, commercial, residential, oil and gas, wetland mitigation, carbon capture and sequestration, alternative energy, and public sectors.

LOCAL, STATE, + FEDERAL AGENCY PERMITTING

- USACE Sec. 10/404 Permitting (Nationwide/General & Individual)
- Water Quality Certificates WQC/401 CWA permitting
- LDNR Coastal Use Permitting
- Project oversight/Preliminary Determinations
- Needs, Alternatives and Justification Analysis
- Local/Residential Permits
- Office of State Lands Permits
- LDWF Scenic Rivers Permits
- Pre-application coordination meetings
- IT Questionnaire
- Mitigation Solutions & Coordination

NATURAL RESOURCE SURVEYS

- Invasive Species Surveys
- Stream Surveys
- Flora Surveys
- Wetland Assessments
- Wetland Delineations

MONITORING + COMPLIANCE

- Biological Monitoring
- Mitigation Compliance Monitoring
- Soil and Vegetation Management Plans

ADVISORY SERVICE SECTORS

- Carbon Capture and Sequestration
- Coastal
- Commercial
- Environmental and Social Governance
- Industrial
- Multi-Use Developments
- Oil and Gas
- Private
- Public
- Residential
- Solar
- Wetlands

WILDLIFE MANAGEMENT

- Natural Food Plot Management Plans
- Flooding Plans for Waterfowl

MASTER PLANNING

- Designing with Nature in Mind

N. Use this space to provide any additional information or description of resources supporting Firm's qualifications for the proposed project. (Continued)

SURVEYING

DDG's licensed surveyors and survey personnel have over 100 years of combined surveying experience in topographic, property boundary, and hydrographic surveys. Our team has successfully and safely completed numerous surveying, staking, and mapping projects across the Gulf Coast.

DDG raises the bar by utilizing the latest and most efficient methods for collecting and staking data points for all types of surveys. DDG is committed to staying at the forefront of technology and uses the latest GPS, Robotic, Remote Sensing, and conventional surveying equipment to ensure that our clients receive accurate and precise data. DDG's surveying division has successfully worked with numerous private and public sector clients, ranging from the engineering and pipeline industries to federal, state and local government agencies, as well as servicing our in-house design professionals.

SERVICES PROVIDED

- BOUNDARY SURVEY
- TOPOGRAPHIC SURVEY
- ATLA/NSPS SURVEY
- AS-BUILT SURVEY
- PIPELINE LOCATION
- CORRIDOR SURVEY
- PROJECT CONTROL SURVEY
- HYDROGRAPHIC SURVEY
- CONSTRUCTION STAKING
- MAGNETOMETER SURVEY
- MARINE CONSTRUCTION
- HIGH RESOLUTIONS MULTI-BEAM SURVEY
- SINGLE-BEAM SURVEY
- SHALLOW HAZARDS SURVEY
- TERRESTRIAL SCANNING
- AERIAL LIDAR
- REALITY CAPTURE
- GIS MAPPING



N. Use this space to provide any additional information or description of resources supporting Firm's qualifications for the proposed project. (Continued)

SEAMLESS INTEGRATION

DDG offers an integrated design delivery method with our team all working collaboratively under one roof providing the highest level of quality control throughout the project life-cycle.

PROJECT MANAGEMENT

DDG has experience in managing a vast range projects spanning across the South Coast. DDG has always maintained success in fully leveraging the capacity of the Project Team based on understanding of each individual's expertise, communication of roles and responsibilities, clear assignments, and establishing effective project schedules and fee allocations. DDG is committed to utilizing its local knowledge and experience to expedite normally hindering project milestones and optimize project outcomes.

CIVIL ENGINEERING

Our experience across many types of projects has forged strong relationships with the many local, state, and federal agencies. We pride ourselves in strong communication, exceptional service, and a broad range of experience from which we develop solutions to meet the needs of project stakeholders. We serve clients in many different ways to suit the needs of each project. Our professional civil engineering staff and diverse experience equips us with the ability to serve clients in multiple market segments on projects with all levels of complexity.

ARCHITECTURE

DDG's Architecture division is honored to celebrate a long history of creating exciting architectural environments. A strong foundation in retail architecture quickly led to growth in numerous areas of practice. By leveraging the remarkable strengths and talents of our resourceful architectural team, DDG has developed into a unified team of professional architects and interns dedicated to our company's core values. Our mission is to elevate architectural experiences through responsive communication and innovation. Our vision is to provide high-quality building design environments, to create sought after design experiences, and to exceed client expectations in the Gulf Coast region.

LANDSCAPE ARCHITECTURE

DDG's landscape architecture group is well known for the planning and design of inspired landscapes that reflect the ecology and culture of places throughout the South. Our reputable experience and leadership has generated value-added solutions that create a sense of place while offering sustainable solutions that are precisely suited to the client and the site. Regardless of the client or project scope, we are committed to developing aesthetically pleasing, functional design that lay a strong foundation for the future of your community.

WATER RESOURCES

DDG's expertise in hydrology and hydraulics engineering was developed through our years of experience with site development activities across the Region, together with our support of local municipalities with flood risk assessments and regional drainage improvement projects. DDG is well-versed in both steady and unsteady one dimensional / two dimensional modeling. DDG has extensive experience utilizing public domain and proprietary models such as SWMM, HEC-HMS, HEC-RAS, AutoDesk Storm and Sanitary Analysis, for hydrologic assessments, conveyance / storage analysis and drainage design.

SURVEYING

DDG's in-house survey personnel and licensed surveyors have over 100 years of land surveying experience in topographic, property boundary and hydrographic surveys. Our team has successfully and safely completed numerous surveying and mapping projects across the Gulf Coast region. DDG raises the bar by utilizing the latest and most efficient methods for collecting and staking data points for property and topographic surveys.

COASTAL ENGINEERING

DDG is committed to the livelihood of the Gulf Coast and has extensive knowledge of the Gulf Coast's terrain, coastline, wildlife and fisheries, and other driving economic factors. DDG's internal team of coastal experts has over fifty years of combined experience, many of which were in direct alignment with various agencies responsible for the protection of the Gulf Coast. Since the inception of DDG's Coastal Division in 2013, the firm's team has successfully designed over 4,000 acres of marsh creation projects and has worked on an abundance of drainage projects benefiting thousands of homes and families throughout the Gulf Coast.

ENVIRONMENTAL + REGULATORY

DDG's environmental professionals are thoroughly familiar with the regulations and regulatory process of numerous governing agencies, and we work with these agencies on a daily basis. DDG has significant experience with permitting services including data consolidation, application preparation and submittal, as well as facilitating correspondence with appropriate agencies and stakeholders. DDG offers a diverse range of services designed to meet and exceed our clients' needs and expectations.

TRANSPORTATION ENGINEERING

DDG's transportation services involves analyzing, developing, and delivering functional solutions to increase the safety and efficiency of transportation systems. The funding advisory practice will allow for both public and private clients to improve their project potential by maximizing funding from numerous new and/or established funding programs.

STRUCTURAL ENGINEERING

What sets DDG's Structural Engineering team apart is our real world experience and in-depth knowledge that enables us to solve even the most challenging structural engineering tasks. We work closely with our clients to ensure that our designs meet their requirements and exceed their expectations.

N. Use this space to provide any additional information or description of resources supporting Firm's qualifications for the proposed project. (Continued)

BAYOU LAFOURCHE FRESH WATER DISTRICT



1016 ST. MARY STREET
THIBODAUX, LA 70301

PHONE: (985) 447-7155
FAX: (985) 447-6307

September 29, 2020

HUGH CAFFERY, CHAIRMAN

GENE HARRELL, VICE-CHAIRMAN

GREGORY NOLAN, SR., SECRETARY-TREASURER

FRANCIS RICHARD, COMMISSIONER

DALE DENNIS, COMMISSIONER

JACOB GIARDINA, SR., COMMISSIONER.

SCOTT LEBLANC, COMMISSIONER

DONALD SCHWAB, COMMISSIONER

LANCE AUTHEMENT, COMMISSIONER

CHRISTOPHER DOMANGUE, COMMISSIONER

RAY MAYET, COMMISSIONER

BARRY SOUDELIER, COMMISSIONER

BEN MALBROUGH, EXECUTIVE DIRECTOR

To Whom It May Concern,

Please accept this letter as my professional and personal recommendation of Duplantis Design Group (DDG). DDG is an outstanding firm with whom I have worked with on the Bayou Lafourche Weir Removal Project. I would strongly recommend the use of their talents and abilities to perform any engineering, survey, and/or management activities.

Bayou Lafourche provides raw water for consumptive use to residents and industries in the area. Since the construction of the Walter S. Leman Memorial Pump Station at Donaldsonville in 1955, water from the Mississippi River pumped over the river levee system into Bayou Lafourche, which presently supplies approximately 500 cfs for consumption and water quality maintenance. In 1966, the Thibodaux Weir was constructed to provide a dependable reservoir for the city's water purification facility.

Removal of the Thibodaux Weir increases the freshwater flow into Bayou Lafourche which combats saltwater intrusion, sustains our coastal environment, and protects the region's water supply for residential and industrial purposes from Donaldsonville to Port Fourchon. In addition to the environmental benefits of the weir demolition, boating access will be restored for recreational use.

DDG's scope of work included survey, due diligence, regulatory compliance, demolition plans, bidding, and construction management. During the entire process, DDG provided invaluable management and coordination. They addressed demands, acted efficiently, and provided well-crafted designs in an expedited manner. The DDG team remained professional and resourceful throughout the entire project.

I look forward to working with DDG in the future and would strongly recommend their services. Should you have any questions or require additional information, please do not hesitate to contact me.

Sincerely,

Benjamin J. Malbrough
Executive Director

N. Use this space to provide any additional information or description of resources supporting Firm's qualifications for the proposed project. (Continued)

CONSTRUCTION ADMINISTRATION + INSPECTION

Jefferson Parish requires knowledgeable, professional individuals with excellent communication skills to administer and inspect coastal protection projects. DDG recognizes the value of this service to the success of a project. We solve construction challenges in a collaborative manner with our clients and their construction contractors, often identifying and addressing situations before they impact a project's performance (i.e., schedule, cost, and construction quality). Because of the value this service brings to our clients, we are routinely asked to provide construction administration and inspection services for our projects. Since 1997, we have completed the designs of over **2,000** civil engineering projects and have provided construction administration and inspection on a very large percentage of these. When our engineers provide construction administration and inspection services, they gain practical experience that can't be learned from behind a desk.



O. To the best of my knowledge, the foregoing is an accurate statement of facts.

Signature: 

Printed Name: Joseph P. Guillory, PE

Title: Vice President of Specialty Services + Partner

Date: July 5, 2024



DUPLDES-01

BWEAVER1

CERTIFICATE OF LIABILITY INSURANCE

DATE (MM/DD/YYYY)

1/2/2024

THIS CERTIFICATE IS ISSUED AS A MATTER OF INFORMATION ONLY AND CONFERS NO RIGHTS UPON THE CERTIFICATE HOLDER. THIS CERTIFICATE DOES NOT AFFIRMATIVELY OR NEGATIVELY AMEND, EXTEND OR ALTER THE COVERAGE AFFORDED BY THE POLICIES BELOW. THIS CERTIFICATE OF INSURANCE DOES NOT CONSTITUTE A CONTRACT BETWEEN THE ISSUING INSURER(S), AUTHORIZED REPRESENTATIVE OR PRODUCER, AND THE CERTIFICATE HOLDER.

IMPORTANT: If the certificate holder is an ADDITIONAL INSURED, the policy(ies) must have ADDITIONAL INSURED provisions or be endorsed. If SUBROGATION IS WAIVED, subject to the terms and conditions of the policy, certain policies may require an endorsement. A statement on this certificate does not confer rights to the certificate holder in lieu of such endorsement(s).

PRODUCER License # 231432 Hub International Gulf South 3861 Ambassador Caffery Parkway Suite 550 Lafayette, LA 70503	CONTACT NAME: Lisa Savant PHONE (A/C, No, Ext): FAX (A/C, No): E-MAIL ADDRESS: lisa.savant@hubinternational.com
INSURED Duplantis Design Group, PC 314 East Bayou Road Thibodaux, LA 70301	INSURER(S) AFFORDING COVERAGE INSURER A : Beazley Insurance Company 37540 INSURER B : Houston Specialty Insurance Company 12936 INSURER C : Navigators Insurance Company 42307 INSURER D : Manufacturers Alliance Insurance Company 36897 INSURER E : HDI Global Specialty SE 086486 INSURER F :

COVERAGES

CERTIFICATE NUMBER:

REVISION NUMBER:

THIS IS TO CERTIFY THAT THE POLICIES OF INSURANCE LISTED BELOW HAVE BEEN ISSUED TO THE INSURED NAMED ABOVE FOR THE POLICY PERIOD INDICATED. NOTWITHSTANDING ANY REQUIREMENT, TERM OR CONDITION OF ANY CONTRACT OR OTHER DOCUMENT WITH RESPECT TO WHICH THIS CERTIFICATE MAY BE ISSUED OR MAY PERTAIN, THE INSURANCE AFFORDED BY THE POLICIES DESCRIBED HEREIN IS SUBJECT TO ALL THE TERMS, EXCLUSIONS AND CONDITIONS OF SUCH POLICIES. LIMITS SHOWN MAY HAVE BEEN REDUCED BY PAID CLAIMS.

INSR LTR	TYPE OF INSURANCE	ADDL INSD	SUBR WVD	POLICY NUMBER	POLICY EFF (MM/DD/YYYY)	POLICY EXP (MM/DD/YYYY)	LIMITS
A	<input checked="" type="checkbox"/> COMMERCIAL GENERAL LIABILITY <input type="checkbox"/> CLAIMS-MADE <input checked="" type="checkbox"/> OCCUR <input checked="" type="checkbox"/> Occurrence Basis GEN'L AGGREGATE LIMIT APPLIES PER: <input checked="" type="checkbox"/> POLICY <input checked="" type="checkbox"/> PROJECT <input type="checkbox"/> LOC OTHER:			V35998230101	9/1/2023	9/1/2024	EACH OCCURRENCE \$ 1,000,000 DAMAGE TO RENTED PREMISES (Ea occurrence) \$ 50,000 MED EXP (Any one person) \$ 5,000 PERSONAL & ADV INJURY \$ 1,000,000 GENERAL AGGREGATE \$ 2,000,000 PRODUCTS - COMP/OP AGG \$ 2,000,000
B	AUTOMOBILE LIABILITY <input type="checkbox"/> ANY AUTO OWNED AUTOS ONLY <input checked="" type="checkbox"/> SCHEDULED AUTOS <input checked="" type="checkbox"/> HIRED AUTOS ONLY <input checked="" type="checkbox"/> NON-OWNED AUTOS ONLY			HSLR180890700	9/1/2023	9/1/2024	COMBINED SINGLE LIMIT (Ea accident) \$ 1,000,000 BODILY INJURY (Per person) \$ BODILY INJURY (Per accident) \$ PROPERTY DAMAGE (Per accident) \$
C	<input checked="" type="checkbox"/> UMBRELLA LIAB <input checked="" type="checkbox"/> OCCUR <input type="checkbox"/> EXCESS LIAB <input type="checkbox"/> CLAIMS-MADE DED RETENTION \$			HO23LIAZ0F16302	9/1/2023	9/1/2024	EACH OCCURRENCE \$ 5,000,000 AGGREGATE \$ 5,000,000
D	WORKERS COMPENSATION AND EMPLOYERS' LIABILITY ANY PROPRIETOR/PARTNER/EXECUTIVE OFFICER/MEMBER EXCLUDED? (Mandatory in NH) Y/N <input checked="" type="checkbox"/> N If yes, describe under DESCRIPTION OF OPERATIONS below		N/A	2023011484005Y	9/1/2023	9/1/2024	<input checked="" type="checkbox"/> PER STATUTE <input type="checkbox"/> OTHER E.L. EACH ACCIDENT \$ 1,000,000 E.L. DISEASE - EA EMPLOYEE \$ 1,000,000 E.L. DISEASE - POLICY LIMIT \$ 1,000,000
E	Professional Liabili			12086317-B	1/18/2024	1/18/2025	Professional 5,000,000
A	Protection & Ind			V35999230101	9/1/2023	9/1/2024	P&I 1,000,000

DESCRIPTION OF OPERATIONS / LOCATIONS / VEHICLES (ACORD 101, Additional Remarks Schedule, may be attached if more space is required)

CERTIFICATE HOLDER

CANCELLATION

Insured's Copy

SHOULD ANY OF THE ABOVE DESCRIBED POLICIES BE CANCELLED BEFORE THE EXPIRATION DATE THEREOF, NOTICE WILL BE DELIVERED IN ACCORDANCE WITH THE POLICY PROVISIONS.

AUTHORIZED REPRESENTATIVE

TEC Professional Services Questionnaire

A. Project Name and Advertisement Resolution Number:

Coastal Engineering Consulting Services as needed parish wide
Resolution #144205 - SOQ #24-020

B. Firm Name & Address:

Stratum Engineering, LLC
585 Johnny F. Smith Avenue
Slidell, Louisiana 70460

C. Name, title and contact information of Principal, as defined in Section 2-926 of the Jefferson Parish Code of Ordinances, who is a registered, licensed architect, professional engineer, or surveyor in the State of Louisiana:

Tony Maroun, P.E. - Principal (LA License No. 26198)
585 Johnny F. Smith Avenue
Slidell, Louisiana 70460
Phone: (985) 643-1160
Email: tmaroun@stratumengr.com

D. Name and contact information of employee who is a registered and licensed architect, professional engineer, or surveyor in the State of Louisiana in the applicable discipline. A subcontractor may be substituted here only if the advertised Project requires more than one discipline.

William Dean McInnis II, P.E. - Vice President (LA License No. 40009)
585 Johnny F. Smith Avenue
Slidell, Louisiana 70460
Phone: (985) 643-1160
Email: dmcinnis@stratumengr.com

E. Please provide the number of employees whose primary function corresponds with each category:

<u>4</u> Administrative	<u> </u> Estimators	<u> </u> Specification Writers
<u> </u> Architects (Licensed)	<u> </u> Geologists	<u> </u> Structural Engineers
<u> </u> Chemical Engineers	<u>3</u> Geotechnical Engineers	<u> </u> Graduate Engineers
<u> </u> Civil Engineers	<u> </u> Interior Designers	<u>2</u> Project Managers
<u>13</u> Construction Inspectors	<u> </u> Landscape Architects	<u> </u> Clerical
<u> </u> Ecologists	<u> </u> Land Surveyor	<u> </u> Grant/Funding Specialist
<u> </u> Electrical Engineers	<u> </u> Mechanical Engineers	<u> </u> Sanitary Engineers
<u> </u> Engineer Intern	<u> </u> Environmental Engineers	
<u> </u> Professional Land Surveyors		<u>22</u> TOTAL

F. Is this submittal by a JOINT-VENTURE? Please check: YES ☐ NO ☒

If marked "No" skip to Section I. If marked "yes" complete Sections G-H.

TEC Professional Services Questionnaire

G. If submittal is by JOINT-VENTURE, list the firms participating and outline specific areas of responsibility (including administrative, technical, and financial) for each firm. Please attach additional pages if necessary.

1.

N/A

2.

N/A

H. Has this JOINT-VENTURE previously worked together? Please check:

YES ☐ NO ☐

I. List all subcontractors anticipated for this Project. Please note that all subcontractors must submit a fully completed copy of this questionnaire, applicable licenses, and any other information required by the advertisement. See Jefferson Parish Code of Ordinances, Sec. 2-928(a)(3). Please attach additional pages if necessary.

Name & Address:	Specialty:	Worked with Firm Before (Yes or No):
1. N/A	N/A	N/A
2. N/A	N/A	N/A
3. N/A	N/A	N/A

J. Please specify the total number of support personnel that may assist in the completion of this Project:

10 _____

TEC Professional Services Questionnaire

K. List the professional in charge, key persons, specialists, and individual consultants anticipated for this Project and provide their relevant information below. If necessary, please attach additional documentation (i.e. resume) that demonstrates the employment history and experience of the Firm's key persons that may assist in the completion of this Project. Please attach additional pages if necessary.

PROFESSIONAL IN CHARGE OF PROJECT:

Name & Title:

Tony Maroun, P.E. / Principal

Project Assignment:

Principal in Charge

Name of Firm with which associated:

Stratum Engineering, LLC

Years' experience with this Firm:

15 (24 with previous firm)

Education: Degree(s)/Year/Specialization:

Master of Science in Civil Engineering / 1987 / University of New Orleans
Bachelor of Science in Civil Engineering / 1984 / University of New Orleans

Active registration: Year first registered/discipline:

Professional Engineer (Civil) / 1995 / Louisiana License No. 26198

Other experience and qualifications relevant to the proposed Project:

Mr. Maroun established Stratum Engineering in 2009. He has almost 40 years of experience in the geotechnical engineering and the materials testing and inspection industry. Under his leadership, the firm has experienced significant growth in a short period of time, and through referrals and repeat client business, the firm has become well recognized in the market place. Presently, Mr. Maroun leads a group of technical professionals who share his beliefs and passions. He continues to be a hands-on engineer and oversees the company's overall operations, promotes Stratum Engineering's core values and commitments, and drives growth and development of new disciplines.

Prior to establishing Stratum Engineering, Mr. Maroun spent over 24 years with a National Engineering firm located in Jefferson Parish where he began as an engineering technician. He eventually worked his way up the ranks to division manager, district manager, and vice president for the geotechnical, environmental, and construction materials testing divisions in Southeast Louisiana and Mississippi Gulf regions. Mr. Maroun is familiar with Jefferson Parish protocols/standards and oversaw several Jefferson Parish projects during his tenure with the previous firm.

TEC Professional Services Questionnaire

KEY PERSON, SPECIALIST, OR INDIVIDUAL CONSULTANT:
Name & Title:
William "Dean" McInnis II, P.E. / Vice President
Project Assignment:
Senior Geotechnical Engineer / Laboratory Supervisor
Name of Firm with which associated:
Stratum Engineering, LLC
Years' experience with this Firm:
13 (2 with previous firm)
Education: Degree(s)/Year/Specialization:
Bachelor of Science in Civil Engineering / 2011 / University of New Orleans
Active registration: Year first registered/discipline:
Professional Engineer (Civil) / 2015 / Louisiana License No. 40009
Other experience and qualifications relevant to the proposed Project:
Mr. McInnis is presently providing geotechnical engineering services on a variety of projects. He routinely performs engineering analyses for the design of retaining walls, drilled shafts, auger cast-in-place piles, driven piles, shallow footings, mat foundations, and flexible and rigid pavements. He is responsible for project coordination with clients, architects, and structural engineers during the design and construction phases. In addition to proposal and report preparation for commercial and industrial projects, as well as city and parish projects, his duties include coordination with field personnel and supervision of the laboratory operations which consist, but are not limited to, supervising and training laboratory personnel as per ASTM and AASHTO procedures, as well as US Army Corps of Engineers procedures. Mr. McInnis is also in charge of updating records of laboratory inventory and managing calibrations of the laboratory test apparatus. Mr. McInnis is NICET certified in Geotechnical Engineering Technology for Laboratory Testing (Level II) as well as Construction Material Testing of Soils, Concrete and Asphalt (Level I) and certified as an ACI Aggregate Testing Technician. He also maintains the LA Water Well Driller's license for Stratum Engineering's drilling operations.

TEC Professional Services Questionnaire

KEY PERSON, SPECIALIST, OR INDIVIDUAL CONSULTANT:
Name & Title:
Robert D. Fowler / Senior Project Manager
Project Assignment:
Senior Project Manager / Field Supervisor
Name of Firm with which associated:
Stratum Engineering, LLC
Years' experience with this Firm:
12 (20 with other firm)
Education: Degree(s)/Year/Specialization:
High School Diploma
Active registration: Year first registered/discipline:
N/A
Other experience and qualifications relevant to the proposed Project:
Mr. Fowler currently serves as the senior project manager for construction materials testing services and has over 30 years of experience. He presently oversees the day to day operations including project coordination with clients during the construction phases, as well as preparation of budget summaries and proposals. He supervises the field technicians and ensures they have the necessary support to complete daily field assignments. He is also involved with field and laboratory testing on a variety of projects and serves as a senior engineering technician. His field experience includes earthwork inspection, performing field density testing, concrete placement inspection, pile logging and pile load tests, vibration monitoring, asphaltic concrete inspection, reinforcing steel inspection, post-tension and pre-stressing inspections. Mr. Fowler currently holds multiple certifications from LADOTD and MDOT for asphalt and concrete inspection as well as being certified by ACI as a Level I Laboratory Technician, Field Technician and Base Testing Technician.

TEC Professional Services Questionnaire

KEY PERSON, SPECIALIST, OR INDIVIDUAL CONSULTANT:	
Name & Title:	
Mitchell P. Landry, P.E. / Project Engineer	
Project Assignment:	
Project Engineer	
Name of Firm with which associated:	
Stratum Engineering, LLC	
Years' experience with this Firm:	
5	
Education: Degree(s)/Year/Specialization:	
Bachelor of Science in Petroleum Engineering	
Active registration: Year first registered/discipline:	
Professional Engineer (Civil) / 2024 / Louisiana License No. 49089	
Other experience and qualifications relevant to the proposed Project:	
<p>Mr. Landry is presently providing geotechnical engineering services on a variety of projects. He routinely performs engineering analyses of settlement, design of retaining walls, drilled shafts, auger cast-in-place piles, driven piles, shallow footings, mat foundations, and flexible and rigid pavements. He is responsible for project coordination with clients, architects, and structural engineers during the design and construction phases. He is also in charge of the drilling operations and ensures that project deadlines are met. In addition, Mr. Landry assists with overseeing laboratory operations. He is certified as a Level I ACI Field Technician.</p>	

TEC Professional Services Questionnaire

KEY PERSON, SPECIALIST, OR INDIVIDUAL CONSULTANT:
Name & Title:
Alex Hontiveros / Engineering Field & Laboratory Technician
Project Assignment:
Engineering Field & Laboratory Technician
Name of Firm with which associated:
Stratum Engineering, LLC
Years' experience with this Firm:
6 (2 with other firm)
Education: Degree(s)/Year/Specialization:
Bachelor of Science in Civil Engineering / 2014 / University of New Orleans
Active registration: Year first registered/discipline:
N/A
Other experience and qualifications relevant to the proposed Project:
Mr. Hontiveros' duties include, but are not limited to, maintaining the concrete and soil laboratories, management and handling of incoming samples, curing and preparation of samples for testing and performing laboratory tests in accordance with applicable ATSM and AASHTO procedures on project samples and proficiency samples. In addition, Alex's duties include conducting geotechnical engineering testing on boring samples for several projects such as Atterberg Limits, unconfined compression, particle size analysis, moisture content determination in general accordance with applicable ASTM procedures. His field experience includes pile logging, concrete placement inspection, and concrete strength testing for various projects.

TEC Professional Services Questionnaire

L. Work by Firm or Joint-Venture members which best illustrates current qualifications relevant to this Project. Please include any and all work performed for Jefferson Parish. Please attach additional pages if necessary.

PROJECT NO. 1

Project Name, Location and Owner's contact information:	Nature of Firm's Responsibility:	
SSC Facility Improvements Textron Marine & Land Systems New Orleans, LA Dammon Engineering, Inc. 554 Old Spanish Trail Slidell, LA 70458 (985) 649-5832	Provided geotechnical engineering services for the design of a new warehouse building as well as improvements to the existing tarmac area to support the construction of new Ship to Shore Connector (SSC) vehicles. A 130 ton Marine Travel Lift was used to move the vehicles around the tarmac and Stratum provided recommendations for a new concrete section using a finite difference method of analysis. Additional evaluations were also made to assist with design of new concrete landing pads and heavy duty truck pavements for the facility.	
Completion Date (Actual or estimated):	Estimated Cost:	
	Entire Project:	Work for which Firm was Responsible:
January 2017	\$2,600,000	\$12,000

PROJECT NO. 2

Project Name, Location and Owner's contact information:	Nature of Firm's Responsibility:	
Snubbing Platform Structure Phoenix Lake Calcasieu Parish, LA Alta Mesa Holdings, LP 15021 Katy Freeway, Suite 400 Houston, TX 77094 (713) 907-4635	Provided geotechnical engineering services for the design of a foundation system consisting of large diameter steel pipe piles for support of a snubbing platform around an existing coffer dam. Soil borings were completed with a barge mounted drill rig and lateral load analysis for platform support system was completed.	
Completion Date (Actual or estimated):	Estimated Cost:	
	Entire Project:	Work for which Firm was Responsible:
April 2018	\$5,800,000	\$26,300

TEC Professional Services Questionnaire

PROJECT NO. 3		
Project Name, Location and Owner's contact information:	Nature of Firm's Responsibility	
Boat Slip C Bulkhead Port Fourchon, LA Greater Lafourche Port Commission 16829 East Main Street Cut Off, LA 70345 (985) 632-6701	Provided geotechnical engineering services for the design of a sheet pile bulkhead extending over 5,000 feet along a heavy industrial ship channel at the Port of Fourchon. The anchored bulkhead was designed for a with a pre-cast concrete pile supported deadman system to counteract over 30 feet of sheet pile from top of bulkhead to the dredged mudline elevation. Global stability of the system along with sheet pile and pre-cast pile recommendations were provided. Stratum also provided load testing services for the pre-cast anchor piles.	
Completion Date (Actual or estimated)	Estimated Cost:	
	Entire Project:	Work for which Firm was Responsible:
February 2019	\$14,400,000	\$65,000

PROJECT NO. 4		
Project Name, Location and Owner's contact information:	Nature of Firm's Responsibility:	
Vertical Lift Bridge Port Fourchon to Airport Connector Galliano, LA Greater Lafourche Port Commission 16829 East Main Street Cut Off, LA 70345 (985) 632-6701	Currently providing geotechnical engineering services for the design of a new vertical lift bridge across Bayou Lafourche. A series of soil borings were drilled through the bayou and embankment using barge and ATV mounted drill rigs. Engineering services include evaluation of foundation systems for the bridge lift towers, Operating House, and fender systems. Recommendations for adjacent sheet pile bulkheads and roadway improvements are also being provided as part of the large Greater Lafourch Port Commision and LA DOTD project.	
Completion Date (Actual or estimated):	Estimated Cost:	
	Entire Project:	Work for which Firm was Responsible:
Est. 2025	\$30,000,000	\$120,000

TEC Professional Services Questionnaire

PROJECT NO. 5		
Project Name, Location and Owner's contact information:	Nature of Firm's Responsibility:	
<p>New Waskey Bridge & Pavilion Port Fourchon, LA</p> <p>Greater Lafourche Port Commission 16829 East Main Street Cut Off, LA 70345 (985) 632-6701</p>	<p>Provided geotechnical engineering services for the design of a new waskey style bridge over an existing drainage structure which drains an adjacent marshy area in to the Flotation Canal. The bridge structure was evaluated utilizing HS-20 loading conditions and deep foundation recommendations were provided. Foundation recommendations for an open area pavilion structure were also provided for an area along the adjacent canal.</p>	
Completion Date (Actual or estimated):	Estimated Cost:	
	Entire Project:	Work for which Firm was Responsible:
January 2023	\$3,500,000	\$16,900

PROJECT NO. 6		
Project Name, Location and Owner's contact information:	Nature of Firm's Responsibility:	
<p>Elevated Parking Deck LUMCON Facility Chauvin, LA</p> <p>LA Universities Marine Consortium 8124 LA Highway 56 Chauvin, LA 70344 (985) 851-2800</p>	<p>Provided geotechnical engineering services for the design of an elevated parking deck at the existing LUMCON Facility in Chauvin to mitigate frequent flooding of the existing surface parking areas. Settlement was evaluated to determine the feasibility of grade supporting the parking area and a deep foundation system was recommended due to the excessive settlement predicted.</p>	
Completion Date (Actual or estimated):	Estimated Cost:	
	Entire Project:	Work for which Firm was Responsible:
January 2020	\$2,000,000	\$8,300

TEC Professional Services Questionnaire

PROJECT NO. 7		
Project Name, Location and Owner's contact information:	Nature of Firm's Responsibility:	
New Boat House U.S. Coast Guard Station Grand Isle, LA APC Construction, LLC 1910 Peters Road Harvey, LA 70058 (504) 539-4260	Conducted a geotechnical investigation and provided a full report to assist in the design of a new covered mooring Boat House along with two (2) new finger piers. SE provided capacities for vertical and battered pre-cast concrete piles for support of the structure. Lateral load analysis was also conducted on various pile cap configurations and loading conditions.	
Completion Date (Actual or estimated):	Estimated Cost:	
	Entire Project:	Work for which Firm was Responsible:
December 2022	\$5,000,000	\$23,500

PROJECT NO. 8		
Project Name, Location and Owner's contact information:	Nature of Firm's Responsibility:	
Sankofa Wetland Park & Trail New Orleans, LA Duplantis Design Group, PC 1 Galleria Boulevard, Ste 1506 Metairie, LA 70001 (504) 434-6565	SE completed a geotechnical investigation consisting of three (3) borings drilled to a depth of 50 feet in order to analyze slope stability and seepage for the planned development consisting of picnic areas, natural play areas, learning gardens, interpretative areas, multi-use and interpretive trails, and a series of stormwater detention ponds and wetland habitats near the existing floodwall and railway in the Lower Ninth Ward section of New Orleans.	
Completion Date (Actual or estimated):	Estimated Cost:	
	Entire Project:	Work for which Firm was Responsible:
March 2023	\$4,500,000	\$27,700

TEC Professional Services Questionnaire

PROJECT NO. 9		
Project Name, Location and Owner's contact information:	Nature of Firm's Responsibility:	
Medal of Honor Pump Station Belle Chasse, LA Professional Engineering & Environmental Consultants, Inc. 1065 Muller Pkwy, Ste B Westwego, LA 70094 (225) 268-6925	SE completed a geotechnical investigation consisting of two (2) borings drilled to a depth of 60 feet in order to provide foundation recommendations for a new pump station platform just north of Medal of Honor Park in Belle Chasse.	
Completion Date (Actual or estimated):	Estimated Cost:	
	Entire Project:	Work for which Firm was Responsible:
January 2023	\$2,500,000	\$10,500

PROJECT NO. 10		
Project Name, Location and Owner's contact information:	Nature of Firm's Responsibility:	
Lockport to Larose Hurricane Protection Project - Reach B North Lafourche Parish, LA Picciola & Associates, Inc. 115 Picciola Parkway Cut Off, LA 70345 (985) 632-5786	Provided geotechnical engineering services for the design of a section of replacement levee extending from Lockport to Larose. A series of soil borings and cone penetrometer tests (CPT's) were conducted to obtain subsurface information along the levee and adjacent borrow area. Engineering analysis included slope stability, settlement, seepage, and provision of design coefficients for potential utilities or pipelines crossing the levee as well as classification of potential levee borrow material for use to construct the embankment.	
Completion Date (Actual or estimated):	Estimated Cost:	
	Entire Project:	Work for which Firm was Responsible:
In Progress	\$30,000,000	\$128,700

TEC Professional Services Questionnaire

M. List all prior and/or on-going litigation between Firm and Jefferson Parish. Please attach additional pages if necessary.

Parties:		Status/Result of Case:
Plaintiff:	Defendant:	
1. N/A	N/A	N/A
2. N/A	N/A	N/A
3. N/A	N/A	N/A
4. N/A	N/A	N/A


N. Use this space to provide any additional information or description of resources supporting Firm's qualifications for the proposed project.

Stratum Engineering, LLC (SE) is a multi-disciplinary, locally owned Geotechnical Engineering and Construction Materials Testing and Inspection firm that is dedicated to the success of our clients. We are committed to consistently delivering quality service by understanding the project needs, communicating effectively and delivering our recommendations on time and within budget. SE has the expertise to provide services ranging from the site evaluation phase through the construction phase of the project with emphasis on a solution oriented approach to individual needs. Personal attention to every project and continuous interaction are just some of the benefits you can expect when working with SE which is led by its principal and founder, Mr. Tony Maroun, who has been practicing in this industry for almost 40 years. Our dedicated team of professionals has been involved with projects of various sizes throughout Louisiana and the Mississippi Gulf Coast region.

Stratum Engineering, LLC (SE) is certified as a Small Entrepreneurship with the Louisiana Economic Development's Hudson Initiative and offers a range of services to assist our clients with all phases of construction projects. Our broad range of geotechnical services includes geotechnical engineering and consulting, geotechnical drilling and laboratory testing. Our geotechnical engineering services include subsurface soil and groundwater investigations, and studies for design, construction and remedial work. The engineering analyses include, but are not limited to, design of shallow and deep foundations, slope stability analysis of earthen embankments, retaining walls, sheet pile recommendations and pavement recommendations including ground stabilization and improvements.

Our drilling services are provided utilizing our in-house drilling equipment as well as through a dedicated drilling subcontractor who is familiar with the area geology. Multiple truck mounted and all-terrain vehicle mounted drill rigs are available to tackle any project type and size, and are ready to mobilize at a short notice. SE has an in-house equipped and accredited geotechnical and construction material testing laboratory capable of performing general soil testing for project design and construction including soil classification tests, strength tests and laboratory compaction tests as well as concrete and aggregate testing. The tests are conducted by experienced technical staff in general accordance with ASTM or AASHTO standard procedures. All of the laboratory testing is supervised by technical staff with years of geotechnical and construction materials testing experience.

O. To the best of my knowledge, the foregoing is an accurate statement of facts.

Signature:  Print Name: Tony Maroun
 Title: Principal Date: July 8, 2024



CERTIFICATE OF LIABILITY INSURANCE

DATE (MM/DD/YYYY)

01/12/2024

THIS CERTIFICATE IS ISSUED AS A MATTER OF INFORMATION ONLY AND CONFERS NO RIGHTS UPON THE CERTIFICATE HOLDER. THIS CERTIFICATE DOES NOT AFFIRMATIVELY OR NEGATIVELY AMEND, EXTEND OR ALTER THE COVERAGE AFFORDED BY THE POLICIES BELOW. THIS CERTIFICATE OF INSURANCE DOES NOT CONSTITUTE A CONTRACT BETWEEN THE ISSUING INSURER(S), AUTHORIZED REPRESENTATIVE OR PRODUCER, AND THE CERTIFICATE HOLDER.

IMPORTANT: If the certificate holder is an ADDITIONAL INSURED, the policy(ies) must have ADDITIONAL INSURED provisions or be endorsed. If SUBROGATION IS WAIVED, subject to the terms and conditions of the policy, certain policies may require an endorsement. A statement on this certificate does not confer rights to the certificate holder in lieu of such endorsement(s).

PRODUCER Brown & Brown of Louisiana, LLC 400 East Kaliste Saloom Rd. Ste 1100 Lafayette LA 70508	CONTACT NAME: Stacey Gannaway PHONE (A/C, No, Ext): (337) 234-5111 E-MAIL ADDRESS: Stacey.Gannaway@bbrown.com FAX (A/C, No):																					
INSURED Stratum Engineering, LLC 585 Johnny F. Smith Ave. Slidell LA 70460	<table><tr><th colspan="2">INSURER(S) AFFORDING COVERAGE</th><th>NAIC #</th></tr><tr><td>INSURER A :</td><td>The Travelers Indemnity Company of America</td><td>25666</td></tr><tr><td>INSURER B :</td><td>The Charter Oak Fire Insurance Company</td><td>25615</td></tr><tr><td>INSURER C :</td><td>Travelers Property Casualty Company of America</td><td>25674</td></tr><tr><td>INSURER D :</td><td>Travelers Casualty and Surety Company</td><td>19038</td></tr><tr><td>INSURER E :</td><td>Admiral Insurance Company</td><td></td></tr><tr><td>INSURER F :</td><td></td><td></td></tr></table>	INSURER(S) AFFORDING COVERAGE		NAIC #	INSURER A :	The Travelers Indemnity Company of America	25666	INSURER B :	The Charter Oak Fire Insurance Company	25615	INSURER C :	Travelers Property Casualty Company of America	25674	INSURER D :	Travelers Casualty and Surety Company	19038	INSURER E :	Admiral Insurance Company		INSURER F :		
INSURER(S) AFFORDING COVERAGE		NAIC #																				
INSURER A :	The Travelers Indemnity Company of America	25666																				
INSURER B :	The Charter Oak Fire Insurance Company	25615																				
INSURER C :	Travelers Property Casualty Company of America	25674																				
INSURER D :	Travelers Casualty and Surety Company	19038																				
INSURER E :	Admiral Insurance Company																					
INSURER F :																						

COVERAGES**CERTIFICATE NUMBER:** CL2411258961**REVISION NUMBER:**

THIS IS TO CERTIFY THAT THE POLICIES OF INSURANCE LISTED BELOW HAVE BEEN ISSUED TO THE INSURED NAMED ABOVE FOR THE POLICY PERIOD INDICATED. NOTWITHSTANDING ANY REQUIREMENT, TERM OR CONDITION OF ANY CONTRACT OR OTHER DOCUMENT WITH RESPECT TO WHICH THIS CERTIFICATE MAY BE ISSUED OR MAY PERTAIN, THE INSURANCE AFFORDED BY THE POLICIES DESCRIBED HEREIN IS SUBJECT TO ALL THE TERMS, EXCLUSIONS AND CONDITIONS OF SUCH POLICIES. LIMITS SHOWN MAY HAVE BEEN REDUCED BY PAID CLAIMS.

INSR LTR	TYPE OF INSURANCE	ADDL INSD	SUBR WVD	POLICY NUMBER	POLICY EFF (MM/DD/YYYY)	POLICY EXP (MM/DD/YYYY)	LIMITS
A	<input checked="" type="checkbox"/> COMMERCIAL GENERAL LIABILITY <input type="checkbox"/> CLAIMS-MADE <input checked="" type="checkbox"/> OCCUR GEN'L AGGREGATE LIMIT APPLIES PER: <input type="checkbox"/> POLICY <input checked="" type="checkbox"/> PRO-JECT <input type="checkbox"/> LOC OTHER:			6605X613340	01/12/2024	06/12/2024	EACH OCCURRENCE \$ 1,000,000 DAMAGE TO RENTED PREMISES (Ea occurrence) \$ 300,000 MED EXP (Any one person) \$ 5,000 PERSONAL & ADV INJURY \$ 1,000,000 GENERAL AGGREGATE \$ 2,000,000 PRODUCTS - COMP/OP AGG \$ 2,000,000
B	AUTOMOBILE LIABILITY <input type="checkbox"/> ANY AUTO <input type="checkbox"/> OWNED AUTOS ONLY <input checked="" type="checkbox"/> HIRED AUTOS ONLY <input type="checkbox"/> SCHEDULED AUTOS <input checked="" type="checkbox"/> NON-OWNED AUTOS ONLY			BA5X613143	01/12/2024	01/12/2025	COMBINED SINGLE LIMIT (Ea accident) \$ 1,000,000 BODILY INJURY (Per person) \$ BODILY INJURY (Per accident) \$ PROPERTY DAMAGE (Per accident) \$
C	<input checked="" type="checkbox"/> UMBRELLA LIAB <input checked="" type="checkbox"/> EXCESS LIAB DED RETENTION \$			CUP7X354290	01/12/2024	01/12/2025	EACH OCCURRENCE \$ 2,000,000 AGGREGATE \$ 2,000,000
D	WORKERS COMPENSATION AND EMPLOYERS' LIABILITY ANY PROPRIETOR/PARTNER/EXECUTIVE OFFICER/MEMBER EXCLUDED? (Mandatory in NH) If yes, describe under DESCRIPTION OF OPERATIONS below	Y / N <input checked="" type="checkbox"/> Y	N / A	UB5X613002	01/12/2024	01/12/2025	<input checked="" type="checkbox"/> PER STATUTE E.L. EACH ACCIDENT \$ 1,000,000 E.L. DISEASE - EA EMPLOYEE \$ 1,000,000 E.L. DISEASE - POLICY LIMIT \$ 1,000,000
E	Professional Liability			EO00005887202	01/13/2024	01/12/2025	Each Claim \$2,000,000 General Aggregate \$2,000,000

DESCRIPTION OF OPERATIONS / LOCATIONS / VEHICLES (ACORD 101, Additional Remarks Schedule, may be attached if more space is required)

CERTIFICATE HOLDER**CANCELLATION**Stratum Engineering, LLC
585 Johnny F. Smith Ave.

Slidell

LA 70460

SHOULD ANY OF THE ABOVE DESCRIBED POLICIES BE CANCELLED BEFORE THE EXPIRATION DATE THEREOF, NOTICE WILL BE DELIVERED IN ACCORDANCE WITH THE POLICY PROVISIONS.

AUTHORIZED REPRESENTATIVE

© 1988-2015 ACORD CORPORATION. All rights reserved.



DIVISION OF SMALL BUSINESS SERVICES

This certification acknowledges that

Stratum Engineering, LLC
DBA: Stratum Engineering, LLC

is Certified-Active as a Small Entrepreneurship with
Louisiana Economic Development's Hudson Initiative.

This certification is valid from 9/7/2023 to 9/7/2024 .

Certification No. 26627

A handwritten signature in black ink, reading "Stephanie Hartman", written over a horizontal line.

Stephanie Hartman,
Director, Small Business Services

Statement of Qualifications

AFFIDAVIT

STATE OF Louisiana

PARISH/COUNTY OF Jefferson

BEFORE ME, the undersigned authority, personally came and appeared:

Thomas H. Buckel, (Affiant) who after being by me duly sworn, deposed and said that he/she is the fully authorized Partner of Duplantis Design Group, PC (Entity), the party who submitted a Statement of Qualifications (SOQ) to Jefferson Parish Government

(Briefly describe the services the SOQ will cover), to the Parish of Jefferson.

Affiant further said:

Campaign Contribution Disclosures

(Choose A or B, if option A is indicated please include the required attachment):

Choice A X

Attached hereto is a list of all campaign contributions, including the date and amount of each contribution, made to current or former elected officials of the Parish of Jefferson by Entity, Affiant, and/or officers, directors and owners, including employees, owning 25% or more of the Entity during the two-year period immediately preceding the date of this affidavit or the current term of the elected official, whichever is greater. Further, Entity, Affiant, and/or Entity Owners have not made any contributions to or in support of current or former members of the Jefferson Parish Council or the Jefferson Parish President through or in the name of another person or legal entity, either directly or indirectly.

Choice B _____

there are **NO** campaign contributions made which would require disclosure under Choice A of this section.

Affiant further said:

Debt Disclosures

(Choose A or B, if option A is indicated please include the required attachment):

Choice A _____ Attached hereto is a list of all debts owed by the affiant to any elected or appointed official of the Parish of Jefferson, and any and all debts owed by any elected or appointed official of the Parish to the Affiant.

Choice B X There are **NO** debts which would require disclosure under Choice A of this section.

Affiant further said:

Solicitation of Campaign Contribution Disclosures

(Choose A or B, if option A is indicated please include the required attachment):

Choice A _____ Attached hereto is a list of all elected officials of the Parish of Jefferson, whether still holding office at the time of the affidavit or not, where the elected official, individually, either by **telephone or by personal contact**, solicited a campaign contribution or other monetary consideration from the Entity, including the Entity's officers, directors and owners, and employees owning twenty-five percent (25%) or more of the Entity, during the two-year period immediately preceding the date the affidavit is signed. Further, to the extent known to the Affiant, the date of any such solicitation is included on the attached list.

Choice B X there are **NO** solicitations for campaign contributions which would require disclosure under Choice A of this section.

Affiant further said:

Subcontractor Disclosures

(Choose A or B, if option A is indicated please include the required attachment):

Choice A X Affiant further said that attached is a listing of all subcontractors, excluding full time employees, who may assist in providing professional services for the aforementioned SOQ.

Choice B There are **NO** subcontractors which would require disclosure under Choice A of this section.

Affiant further said:

That Affiant has employed no person, corporation, firm, association, or other organization, either directly or indirectly, to secure the public contract under which he received payment, other than persons regularly employed by the Affiant whose services in connection with the construction, alteration or demolition of the public building or project or in securing the public contract were in the regular course of their duties for Affiant; and

[The remainder of this page is intentionally left blank.]

That no part of the contract price received by Affiant was paid or will be paid to any person, corporation, firm, association, or other organization for soliciting the contract, other than the payment of their normal compensation to persons regularly employed by the Affiant whose services in connection with the construction, alteration or demolition of the public building or project were in the regular course of their duties for Affiant.

Thomas H. Buckel

Signature of Affiant

Thomas H. Buckel

Printed Name of Affiant

SWORN AND SUBSCRIBED TO BEFORE ME

ON THE 3rd DAY OF July, 2024.

Brad Villemuer

Notary Public

Brad Villemuer

Printed Name of Notary

173946

Notary/Bar Roll Number



My commission expires at death.



CAMPAIGN CONTRIBUTIONS

Below is a list of all elected officials of the Parish of Jefferson, whether still holding office at the time of the affidavit or not, where the elected official, individually, either by telephone or by personal contact, solicited a campaign contribution or other monetary consideration from the Entity, including the Entity's officers, directors and owners, and employees owning twenty-five percent (25%) or more of the Entity, during the two-year period immediately preceding the date the affidavit is signed. Further, to the extent known to the Affiant, the date of any such solicitation is included on the attached list.

1. Committee to Elect Jennifer Vrancken
\$1,000 / April 2, 2024

SUBCONTRACTOR DISCLOSURES

Below is a listing of all subcontractors, excluding full time employees, who may assist in providing professional services for the aforementioned SOQ.

1. Stratum Engineering, LLC
585 Johnny F. Smith Ave,
Slidell, LA 70460