

Letter of Interest for the Design and Construction of Temporary Inmate Housing for the Orleans Parish Criminal Sheriff's Office Parish of Orleans, State of Louisiana





February 16, 2010

Mr. John Sens  
Purchasing Department  
Orleans Parish Criminal Sheriff's Office  
2614 Tulane Ave.  
New Orleans, LA 70119

Re: LETTER OF INTEREST FOR THE DESIGN AND CONSTRUCTION OF  
TEMPORARY INMATE HOUSING FOR THE ORLEANS PARISH  
CRIMINAL SHERIFF'S OFFICE

Dear Mr. Sens:

The Migue Deloach Company team appreciates the opportunity to submit a letter of interest for the design build package on the above referenced project. We bring the following strengths to your endeavor.

#### **Local Contractors**

The Migue Deloach Company LLC is a Louisiana contractor. Approximately 70% of the work and design on this project will be performed by Louisiana based companies and suppliers. Many of the major subcontractors and design professionals on the team are also located in the New Orleans area. Most of this team has been involved in the regional rebuilding effort and the rebuilding of New Orleans in particular. Our team has the experience required to operate effectively in this effort.

#### **Experience**

The Migue Deloach Company has accumulated vast experience in prison and jail construction. We have successfully completed many complex prison/jail construction projects. Many of these projects were obtained through the public bid market with about half of these projects being design build efforts. We are well versed in what it takes to perform from a scheduling, manpower and cost standpoint. As our proposal is reviewed it will become apparent that most of the team has similar experience. I would like to stress the vast experience in prison/jail construction and design of two of our team members in particular. The lead designer on the team is DLR Group Architecture & Engineering, Inc. and the detention equipment contractor is Cornerstone Detention Products, Inc. These firms are consistently ranked among the top in their respective areas of expertise and are devoted to providing their clients with their vast amount of knowledge and experience. The accumulated experience of our entire team is unsurpassed and will be our biggest asset as we enter this project.

**Performance**

The 180 day completion schedule for this project is very demanding. We will utilize fast track construction methods as the project design is being completed to meet this schedule. We have the manpower available and are committed to working a schedule that will permit timely completion. Once again I can't overemphasize how important the overall team's collective experience will be in meeting a tough schedule such as this.

**Financing/Lease Option**

Part of the technical proposal includes a lease option. Our team has the financing available to make this happen and we have the ability to make a viable lease option available for the owner's consideration. This aspect will be further detailed in our technical proposal.

We welcome the opportunity to further present our qualifications and provide you with a technical proposal that meets the needs of your department within the outlined parameters. It is with a great amount of excitement we look forward to the next step in this procurement process and ultimately working with you on this project!

Sincerely,

The Miguez Deloach Company LLC



Wayne Deloach  
President

## | Table of Contents |

Design-Builder	Section 1
Louisiana Licensed Design Team	Section 2
Louisiana Licensed General Contractor	Section 3
Why Migue Deloach	Section 4
Project Team	Section 5
Past Performance on Public Projects	Section 6
Project-Specific Criteria	Section 7
Past and Current Professional Accomplishments	Section 8
Litigation	Section 9
References	Section 10
Capacity for Timely Completion	Section 11
Public Work Experience	Section 12
Construction and Design Allocation	Section 13
Disadvantaged Business Enterprise	Section 14



## | Section 1 |

Identify "Design-Builder", individual, sole-proprietorship, or corporate identity of the "Design-Builder" responsible for the performance of the work of this solicitation. "Design-Builder" shall be either a Louisiana licensed Architect, Engineer or Contractor. Provide contact information, and if a corporation of any type, the representative of the corporation authorized to execute the "Design-Build" contract, as well as Louisiana corporation information and Louisiana professional license number of "Design-Builder". NOTE: The Design-Builder can sublet responsibility for professional design services, construction services, or engineering services.

## | 1. Design-Builder |

The following entity will be responsible for the performance of the work identified in the solicitation and will serve as the Design-Builder:

The Miguez Deloach Company LLC  
2712 Davis Drive  
Pineville, LA 71360-5750  
Phone: (318) 445-9494  
Fax: (318) 445-9142  
Email: waynedeloach@miguezdeloach.com

Representative authorized to execute the Design-Build contract:  
Wayne Deloach

Louisiana Corporate Information:  
The Miguez Deloach Company LLC  
2712 Davis Drive  
Pineville, LA 71360  
Ph 318-445-9494  
Fax 318-445-9142  
Email waynedeloach@miguezdeloach.com  
Louisiana State Contractors License #39405  
License Classifications: Building Construction, Heavy Construction

## | Section 2 |

List Louisiana licensed architect and Louisiana licensed engineers to complete the design portion of the work, the type of work they will be in charge of, and their Louisiana license numbers both individual and in the instance of a corporation their Louisiana corporation license number.

## | 2. Louisiana Licensed Design Team |

The following individuals and corporate entities will be responsible for the design portion of the work:

### Architecture

DLR Group Architecture & Engineering inc. (a Louisiana corporation)

Louisiana corporation license number: 0926

Architect of Record: O. H. Martin Berglund

Louisiana professional license number: 6915

### Civil Design & Engineering

Julien Engineering and Consulting, Inc.

Louisiana corporation license number: EF0001989

Civil Engineer of Record: Kerwin Julien, PE

Louisiana professional license number: PE0024944

### Structural Design & Engineering

Meyer, Meyer, LaCroix & Hixon, Inc.

Louisiana corporation license number: EF 0000563 Engineering;

VF 000096 Surveying

Structural Engineer of Record: Kerry J. Labauve, PE

Louisiana professional license number: 16224

### Mechanical and Plumbing Design & Engineering

Professional Engineering Services

Louisiana corporation license number: NA (sole proprietorship)

Engineer of Record: Damien W. Serauskas

Louisiana professional license number: 28519

### Electrical Design & Engineering

Schlaflly Engineering LLC

Louisiana corporation license number: EF.0003454

Engineer of Record: Maffitt Kimball Schlaflly, P.E.

Louisiana professional license number: PE0027699



### | Section 3 |

List Louisiana licensed general contractor which is to complete the work of this solicitation and their Louisiana license number.

### | 3. Louisiana Licensed General Contractor |

The following general contractor will complete the work of this solicitation:

The Miguez Deloach Company LLC  
Louisiana license number: 39405

## | Section 4 |

Provide a written description why your team can best perform the work of this solicitation.

#### | 4. Why Miguez Deloach? |

The Miguez Deloach Company and our team of design consultants and sub contractors can best perform the design and construction of the Temporary Inmate Housing project because of our extensive expertise in detention facility design and construction.

Our executives and staff are well versed in delivering this type of facility on an aggressive schedule, which is required by this project. Our team members have experience with corrections projects delivered under extremely compressed schedule parameters. As an example, DLR Group was the architect and engineer for a 599,000 sf, 3,240-bed all cell corrections facility in Eloy, Arizona that was designed and constructed in just 14 months. Actually, the first 1,000 inmates arrived after only 10 months with the remainder arriving as additional phases of the facility were completed.

In addition, our design-build team will involve the very best Louisiana subcontractors for specialty trades. The size and experience of our consultants and sub contractors will allow us to expedite delivery and design of critical path items with traditionally long lead times such as detention equipment and pre-engineered buildings.

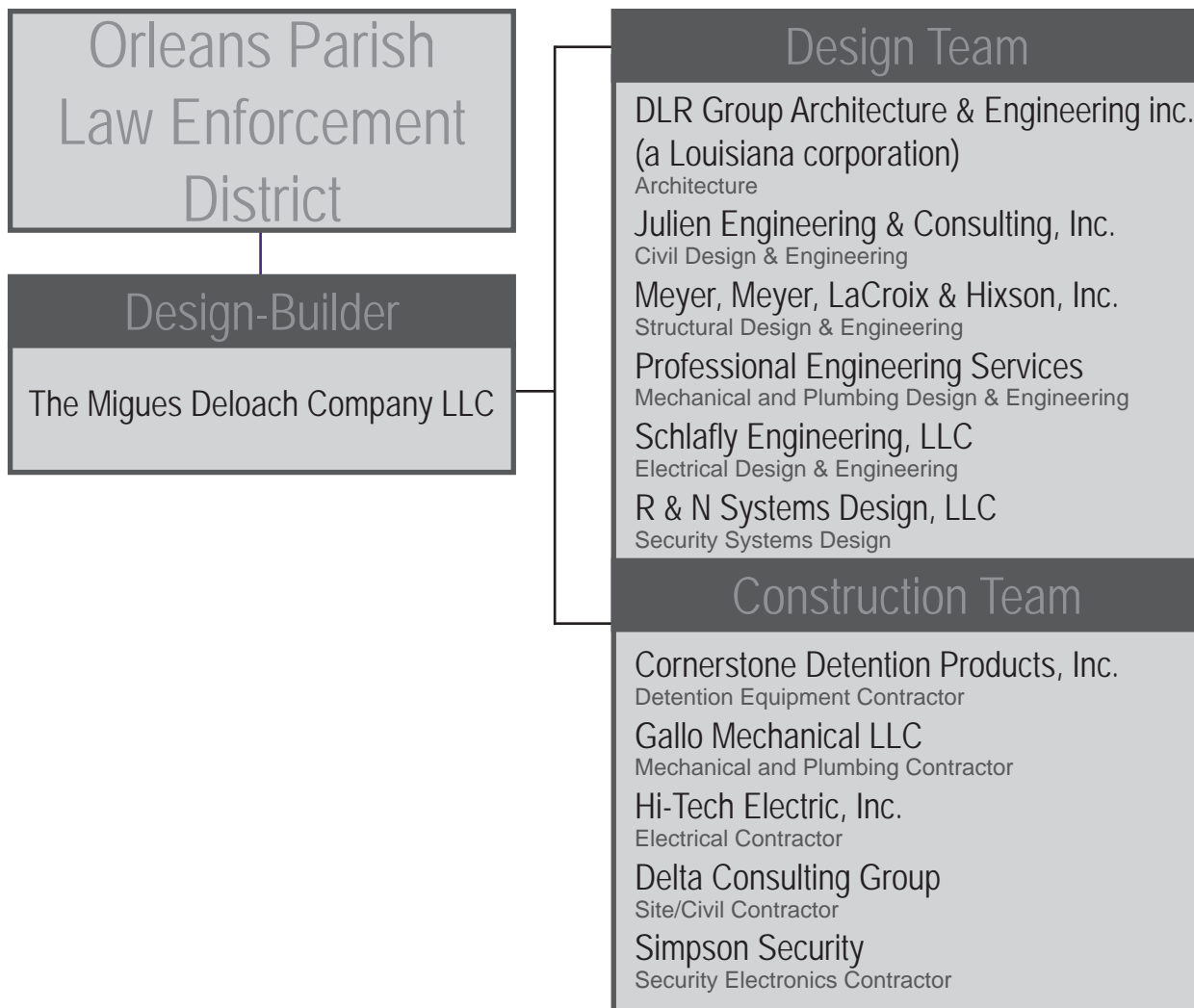
Our goal will be to deliver this facility on time, in budget, and with the highest possible quality.

## | Section 5 |

Professional training and experience of both the design, engineering, and construction entity components and of key personnel in general and as related to the project under consideration.

## | 5. Project Team |

The following information provides brief information of the history, structure, area of specialty and capabilities of the majority of entities involved with the design and construction of your project. Following the company information is the personal information and resumes of key individuals proposed to be involved with this endeavor.



## | 5. Project Team | General Contractor | The Migue Deloach Company LLC

The Migue Deloach Company LLC was founded in 2002 by Wayne Deloach and Larry Migue. In 2003 Kelvin Deloach and Wendell Deloach joined the firm as partners. Larry Migue serves as CEO and Wayne Deloach is President of the Migue Deloach Company. Kelvin Deloach and Wendell Deloach are Vice Presidents of the company. The partners of the Migue Deloach Company collectively bring 117 years of experience in general contracting to the table. This wealth of experience, in conjunction with a highly experienced work force, enables The Migue Deloach Company to be very effective and competitive in all types of general construction. We are a tough competitor in the bid market and are very experienced in the design build arena with many repeat customers. Our primary goals are to produce a quality product for our clients, to provide a safe work environment for our employees and to be an asset to our community. Our offices are located in Pineville, LA which is roughly in the center of the state. This central location allows us to target projects over the entire State. The Migue Deloach Company also holds contractor licenses in the states of Mississippi and Arkansas. Our firm is a general member of Associated General Contractors of Louisiana.



## | 5. Project Team | Architect | DLR Group Architecture & Engineering inc.

### Who We Are

DLR Group is an integrated design firm providing architecture, engineering, planning and interiors services. With 450 professionals in offices located across the United States, including California, DLR Group utilizes national experience and expertise to combine design innovation with responsive services.

### What We Do

DLR Group's design elevates the human experience. Clients collaborate with us to create enduring places for living, learning, working and protecting...sustainably. Given the breadth and depth of our experience, you may have experienced our design already in your daily life.

### Where We Excel

While the breadth of our work experience includes many building types, we have developed a focused expertise in criminal justice buildings, to include the following:

- Correctional Facilities
- Detention Facilities
- Juvenile Facilities
- Law Enforcement Facilities
- Courts Facilities

### Design-Build Expertise

DLR Group has a deep project resume on Design-Build projects. We have worked with many different contractors on more than 40 correctional projects utilizing the Design-Build delivery method. The key to our success is grounded on our basic working relationships and trust of all parties, coupled with the assignment of experienced staff. We have performed work of utmost quality for both public and private corrections clients and have numerous repeat clients, which is a testament to our performance and accountability. Our approach to the design build delivery method is based on a total team cooperation attitude, which begins at the start of each project.

We listen to your vision, goals and objectives. Once we've listened and understand your project do we begin the design process to meet your needs so that we can deliver on the promise of utmost quality.

## | 5. Project Team | Civil Engineer | Julien Engineering and Consulting, Inc.

Julien Engineering and Consulting, Inc (Julien) is a professional engineering firm specializing in civil and structural engineering and construction administration. Julien was established in 1995 to assist clients in an accurate and expedient manner to provide cost effective solutions for engineering projects. We have the supporting facilities including necessary technology, computers, software, and supplementary equipment required to complete any engineering task in a timely manner. Registered engineers supervise all engineering work. JULIEN provides design, analysis, construction management, resident inspection, and development of plans, specifications, reports, and assessments. Our project interests are maintained in civil/structural works, transportation features, roadways, storm sewer, drainage, sewerage, water supply, educational facilities, building structures, site development, foundations, allpurpose trails, project cost estimating, and other areas related to infrastructure development and improvement.

Julien Engineering and Consulting, Inc. is a minority-owned (African-American) small business firm which has been DBE certified by State of Louisiana, LADOTD, City of Orleans, New Orleans Airport, S&WB, and the Small Business Administration (SBA). JULIEN has been certified as an 8(a) firm by the SBA, is Hub zone certified, and is CCR registered.

JULIEN has exceptional experience in design and planning and development of civil/structural projects, and diverse experience in design of roadways, storm sewer, drainage, sewerage, water supply, educational facilities, buildings, structures, levees, flood control structures, all-purpose trails, site work, and utility construction. We have produced volumes of construction plans, specifications, studies, project cost estimating, and technical reports. We also have experience in construction/project management requiring coordination of several design disciplines, contractors, and owners.

As demonstrated through our vast experience with past clients, we have the professional qualifications, education and experience required to perform the necessary work above the expected level. A review of our education, qualifications and experience reveals the level of credentials we possess. JULIEN professionals have managed projects from conception to successful completion providing leadership to dynamic teams of owners, contractors, public agencies, private institutions, and the public.

## | 5. Project Team | Structural Engineer | Meyer, Meyer, LaCroix & Hixson, Inc.

Meyer, Meyer, LaCroix & Hixson, Inc. (MML&H) founded in 1968, has offered professional engineering and land surveying services in Louisiana and has established an extraordinary client base from both the public and private sectors. The firm has continued its business operation for more than 41 years. MML&H is a multi-disciplined full service engineering and land surveying firm headquartered in Alexandria, Louisiana, with offices in Baton Rouge, Ruston and Walker, Louisiana. MML&H was formed with four employees and currently employs an average of 65 full-time professional and technical support personnel who have over 600 total combined years of experience while working for MML&H. The firm has 11 professional engineers and one registered professional land surveyors on staff. Meyer, Meyer, LaCroix & Hixson, Inc. has contracted professional engineering and surveying for more than 3,000 projects serving more than 500 clients. Clients have included the federal and state government, parish governments, state authorities and districts, municipalities and the private sector.

Meyer, Meyer, LaCroix & Hixson, Inc. is a fully licensed engineering and land surveying firm under Certificate Numbers 000563-C and 00096, respectively, issued by the Louisiana State Board of Professional Engineers and Land Surveyors. All of our professional employees hold individual licenses as Professional Engineers and/or Registered Land Surveyors in Louisiana.

While the majority of the MML&H's workload is oriented to the civil engineering field, there is also staff expertise in the area of structural design of buildings. The staff includes professionals experienced in civil, mechanical, sanitary, structural, hydrology, drainage, land surveying, biddability and constructability reviews and construction surveillance. A very competent graphics department is maintained. Services can also be provided to clients in the fields of urban and financial planning.

## | 5. Project Team | Mechanical & Plumbing Engineer | Professional Engineering Services

Damien W. Serauskas, P.E. - Professional Engineering Services was started as an individual sole proprietorship to serve the needs of the local and regional design and construction community. The company has dedicated itself to providing mechanical engineering services, including heating, ventilation, and air conditioning (HVAC) system design, plumbing system design, fire protection system design, and site utilities design, for a select group of clients throughout the southern region of the country. Clients range from local Architects in the New Orleans area, to universities throughout the state, to large national accounts with project locations throughout the United States. It has been the mission of Professional Engineering Services to provide the highest quality consulting engineering services, including design, estimating, construction administration, and system analysis, while maintaining a level of professionalism and service unparalleled in the local engineering community. It is the hallmark of Professional Engineering Services to under-commit and over-deliver; we are dedicated to providing our quality services on-time, and within the available funds for construction.

### Partnering and Teamwork

It will always be paramount to the success of this organization to foster a sense of partnering and teamwork to meet the common objectives of any project. As engineering is an applied science, it is our professional obligation to apply these scientific principles with the intention of providing solutions to the task at hand. It is always the objective of this office to become an integral part of the design team, and provide the necessary input and expertise to ensure each individual project is a success. To this end, we have partnering relationships with outside consultants, including architectural, electrical, lighting, special systems, and structural engineers to provide a full-service, single-point approach to meet the individual needs of each project.

Rather than becoming the largest Engineering firm in the local area, it has been, and will continue to be, the mission of Professional Engineering Services to maintain a smaller scale in order to provide the best possible response and service to each client. This unparalleled commitment to service, coupled with superior technical expertise, has been our focus since inception. Our deliverables are of the highest quality, and they are furnished on-time to meet the demands of even the most grueling schedules.

Since its inception in early 2000, Professional Engineering Services has realized many successes, and we look forward to adding to that list in the years to come. It is the intention of this firm to continue providing exceptional service to each client, and foster relationships that extend beyond any single project. In short, we are dedicated to making your project a success.

## | 5. Project Team | Electrical Engineer

### | Schlafly Engineering, LLC

#### Company Summary:

Schlafly Engineering, LLC provides professional electrical engineering design for clients who construct, manage, maintain, and plan for commercial, institutional, light industrial, and resort/hospitality type facilities.

#### Mission:

Our mission is to provide clients across Southeastern Louisiana with electrical engineering services for buildings to include power distribution, lighting, fire detection, telecommunications, intrusion detection, access control, CCTV, and multi-media presentation systems.

#### Clients:

Our clients consist of building owners, architects, and contractors. We provide our design services through traditional agreements for public and private design-bid projects, as well as through subcontractor agreements for public and private design-build projects.

## | 5. Project Team | Security Systems Design | R & N Systems Design, L.L.C.

R & N Systems Design, LLC specializes in security systems design for justice facilities. Combining architectural and engineering expertise, R & N is uniquely qualified to develop total solutions for its clients in critical areas such as detention, life safety and security electronics.

R & N's senior principals, Wally Riffle and Frank Niedzwiedz, have devoted their professional careers to this highly specialized practice, earning high praise for their depth of knowledge, common sense designs and attention to detail from concept to completion. With a combined 54 years of experience, Riffle and Niedzwiedz have participated in more than 300 security systems projects in jurisdictions across the nation.

Wally Riffle and Frank Niedzwiedz have extensive past experience serving the correctional industry as a security contractor responsible for both detention and electronic systems. This enables R & N Systems Design, LLC, as the independent designer, to have a full understanding, which facilitates a fully coordinated security systems design.

The goal of R & N Systems Design, LLC is to provide our clients the services that they desire while responding to the security needs of their clients. Our services can focus on security electronics, life safety systems or detention equipment.

Services include the design of a fully integrated low voltage security electronic systems including, but not limited to:

- Closed Circuit Television Systems
- Intercommunication Systems
- Perimeter detection systems
- Card Access Systems
- Personnel Alarm Systems
- Transient Voltage Surge Suppression Systems
- Touch Screen and Graphic Annunciation Control Systems
- Data Networks
- Video Visitation and Arraignment

Services include the design of the detention equipment including:

- Security Hardware
- Security Hollow Metal
- Security Glazing
- Security Furnishings

## | 5. Project Team | Detention Equipment Contractor | Cornerstone Detention Products, Inc.

Cornerstone was formed in 1998 by Mitch Claborn. Close scrutiny of the detention industry reveals an exceptional future for a company that provides engineering, repairs, additions, and renovations of existing and new confinement facilities. Carefully selected employees with many years of experience in all phases of the detention equipment industry were chosen giving the Company an advantage over other companies.

The experience and knowledge of the industry gained in previous detention positions has brought approval of important material and equipment suppliers to distribute and install their detention products. The Company will use these many years of buying, installing, and servicing detention products manufactured by quality manufacturers to form the foundation of its business. Cornerstone consistently succeeds because it goes the extra step in buying only quality products, furnishing accurate engineering drawings, and providing expert installation.

As a result, Cornerstone has become known for its quality and its reputation will continue to grow within the industry. Word of mouth from previous customers and general contractors has always brought invitations and approvals to bid future work.



## | 5. Project Team | Plumbing & HVAC Contracting & Design

### | Gallo Mechanical, LLC

Gallo Mechanical, LLC, founded in 1945 is a full-service HVAC and Plumbing Contractor that has participated in many of the most complicated and sizable projects in the Gulf Coast Area. Our 2009 revenues were in excess of \$45 million and our Mechanical HVAC and Plumbing services range from traditional plan and spec projects to turnkey design/build projects, to anywhere in between. We are headquartered in New Orleans, LA with a satellite office in Hammond, LA. We currently have over 190 full-time employees specializing in preconstruction, project management, plumbing, pipefitting, certified medical gas installation, pipe fabrication, etc. Our current backlog is \$71,500,000.00. We serve the Gulf Coast Region from Lake Charles, LA to Mobile, AL.

## | 5. Project Team | Electrical Contracting | Hi-Tech Electric, Inc.

Hi-Tech Electric, Inc. is one of the fastest growing electrical contractors in the southwest. Hi-Tech Electric's growth is a direct result of our professional staff which has more than 100 years of combined experience in the electrical contracting field and our ability to deliver quality installations on schedule and at a competitive price. Quality work, quality people, high standards for safety, and a detailed communication network have made HiTech Electric a leader in the electrical contracting and engineering industry. In the Industrial, Commercial and Service environments we have an established record and reputation that serves as a standard for electrical contractors. Each project is competently supervised and managed to ensure our clients are provided the highest quality construction services. Hi-Tech Electric, Inc. has offices in Dallas, Houston, Pasadena, New Orleans and Mandeville.

## | 5. Project Team | Security Electronics Contractor | Simpson Security Systems, Inc.

Simpson Security Systems, Inc. is a 60-employee firm headquartered in Alexandria, Louisiana. It was founded in 1991 and is privately held by the Simpson family.

SSS, Inc. performs installation and service on Integrated Special Systems such as:

- Fire Alarm Systems
- Communications
- CCTV
- Telecommunications/Data and Fiber
- Security Systems
- Integrated Security Electronics
- Nurse Call Systems
- MATV Systems
- Access Control and Gate Systems
- Sound and Video
- Automation and Control Systems
- Engineering, Consulting and Design

By performing the installation of all the above mentioned work, it allows SSS, Inc. to package Special System contracts for schools, hospitals, detention, convention centers, nursing homes, multi-family, high-rise, commercial, casinos, banks, plants, residential and industrial projects. Simpson Security Systems, Inc. has completed more than 100 State, Parish, County and Federal Detention projects since 1991 and has over 80 years of combined detention experience with listed key employees. Simpson Security Systems, Inc. has been performing services similar, to those required for this project for 20 years. Please note that Keith Simpson and others have more extensive detention experience from previous employment with Metroplex Controls and other firms. Simpson Security Systems, Inc. is licensed by the state of Louisiana, Texas and Florida for all work provided. All licensing in the state of Louisiana are in possession of Simpson Security.

Education:

Bachelor of Science Degree in Building Construction  
University of Louisiana at Monroe  
(formerly Northeast Louisiana University)

Affiliations:

- Louisiana Associated General Contractors, Inc.

Years of Experience:

38

| E. Wayne Deloach | General Contractor  
President, The Migue Deloach Company LLC

**Bio:**

Mr. Deloach spent 3 years after graduating working as an estimator and project manager for Milton J. Womack, Inc. Womack is located in Baton Rouge, Louisiana and is a commercial general contractor.

In 1975 Mr. Deloach went to work with Ratcliff Constructions Company of Alexandria, Louisiana. He worked as estimator and project manager and was promoted to Vice-President of the company in 1980. Ratcliff Construction was a commercial general contractor. In the early 1980's Mr. Deloach opened an office in Oakdale, Louisiana for Ratcliff Construction. He served as the onsite project manager for prison construction for The Bureau of Prisons totaling about \$60,000,000.00. In 1990 he was placed in charge of all estimating for Ratcliff Construction.

Mr. Deloach was employed in 1996 as a project manager and estimator for Skip Converse, Inc. of Pineville, Louisiana. He also served as Vice-President of the company.

In April 2002 Mr. Deloach founded The Migue Deloach Company LLC with Mr. Larry Migue. The company is located in Pineville, Louisiana and operates as a commercial general contractor. Mr. Deloach serves as President of the company.

Education:

Electrical Technician Course (ICS), 1971  
State of Louisiana Trade School @  
Alexandria, Drafting, 1967  
Pineville High School, 1965

Affiliations:

- National Association of Home Builders
- Central La. Home Builders Association
- Rotary Club of Pineville
- Louisiana Associated General Contractors, Inc.

Years of Experience:

40

| Larry Migue | General Contractor  
CEO, The Migue Deloach Company LLC

**Bio:**

Mr. Migue has been involved in the construction industry for over 40 years. He has been a business owner for over 33 years offering a vast array of construction services. Through professional training programs, and hands on learning, Mr. Migue has acquired a vast knowledge of construction practices and procedures.

His construction experience includes estimating as well as project management with a background that offers knowledge of all aspects of the industry whether it be actual field construction issues or the workings of the inner office. His broad work experience enables him to offer valuable suggestions and direction on numerous construction related activities.

Through seminars, certification courses and field experience, Mr. Migue has developed many skills in designing and estimating metal buildings. He is learned in procurement, production and assembly as well.

Education:

Bachelor of Science Degree in Construction  
University of Louisiana at Monroe  
(formerly Northeast Louisiana University)

Affiliations:

- Louisiana Associated General Contractors, Inc.
- Exchange Club Service Organization

Years of Experience:

23

| Kelvin Deloach | General Contractor  
Vice President, The Migue Deloach Company LLC

**Bio:**

Mr. Deloach spent three years after graduation in the Heavy Construction Industry working on the Sidney A. Murray Hydro-Electric power plant and Lock and Dam structure # 3 (Red River) as an assistant Project Manager.

Mr. Deloach transitioned back to the commercial construction industry where he worked his way through college as a carpenter, by working on the Oakdale Detention Center Rebuild project for Ratcliff Construction Company. After completion of the Oakdale Prison he went to work for Skip Converse, Inc. as an estimator/Project Manager where he spent 13 years specializing in Design-Build hospital construction. He spent 3 years as president of the Construction Division for Skip Converse, Inc.

In 2002 Mr. Deloach started Deloach Construction, LLC which later merged with The Migue Deloach Company LLC, where he became a partner. His involvement has been primarily focused in the areas of military work for the Corps of Engineers and prison work for the Federal Bureau of Prisons.

Education:

Bachelor of Science Degree in School of Construction  
University of Louisiana at Monroe  
(formerly Northeast Louisiana University)

Registrations:

Building Construction License Exam for State of Louisiana – 1998

Affiliations:

- Kiwanis Club
- Central Louisiana Food Bank
- Louisiana Associated General Contractors, Inc.

Years of Experience:

27

| Wendell Deloach | General Contractor  
Vice President, The Migue Deloach Company LLC

**Bio:**

Mr. Deloach spent 8 years after graduation working as a directional surveyor and driller for a major oil field service company. Five of the years were spent in foreign countries. Mr. Deloach transitioned back to the construction industry fulfilling the duties as a project engineer for 2 years on the Oakdale Prison Phase II project with Ratcliff Construction. He spent the next 10 years with Skip Converse Construction in project management and estimating for major interior type work.

In 2002 Mr. Deloach started Deloach Construction LLC which later merged with The Migue Deloach Co. LLC. He became a partner and assumes the role of Vice-President. He focuses on project management and estimating.



## Joseph F. Haines, AIA | Design Architect

Senior Principal, DLR Group

### Bio:

Mr. Haines specializes in justice facility project development, management and design. Since 1976, he has had varying degrees of involvement in over 250 criminal justice-related planning, development, finance, design and construction projects.

His professional experience includes the preparation of feasibility studies, architectural programs, site selection, facility program management, design/build management, architectural design and document production, security systems consulting, project budgeting and estimating and contract negotiation.

He is involved in correctional architecture on a national level and serves as a sub-committee chairperson of the American Institute of Architects Committee on Architecture for Justice (AIA/CAJ), is a member of the National Institute of Corrections Task Force on Prison Construction Standardization & Techniques, and served as a board member for the Nebraska Jail Standards Board from 1995 to 2000.

Mr. Haines' experience spans the U.S. from coast to coast and in foreign countries. His work includes city, county, state and federal government clients and private corrections operators. His criminal justice planning and design experience includes juvenile facilities, county detention facilities, state correctional facilities, police and law enforcement facilities, federal government facilities, special needs facilities and private correctional facility design-build-finance developments.

### Experience:

#### County Detention Facilities

- Hall County Jail; Grand Island, NE
- Hall County Public Safety Center Remodel; Grand Island, NE
- Hillsborough County Jail; Tampa, FL
- Saline County Law Enforcement Center; Wilber, NE
- Maricopa County Durango Adult Detention Complex; Phoenix, AZ
- Auckland Central Remand Prison; Auckland, New Zealand
- Cascade County Jail; Great Falls, MT
- Central South Dakota Regional Jail; Pierre, SD
- Marathon County Huber Law/Minimum Security; Wausau, WI
- Winnebago County Huber Law Facility; Oshkosh, WI
- LaCrosse County Jail and Courts; LaCrosse, WI
- Lancaster County Jail; Lincoln, NE
- Pottawattamie County Law Enforcement Center; Council Bluffs, IA
- Pinellas County Jail Expansion; Clearwater, FL
- Walworth County Jail Feasibility Study; Moberly, SD
- Sheboygan County Municipal Courts; Sheboygan, WI
- Minnehaha County Work Release Facility; Sioux Falls, SD
- El Paso County Criminal Justice Center; Colorado Springs, CO
- Manatee County Detention Facility; Bradenton, FL
- Josephine County Adult Detention Center; Grants Pass, OR
- Ventura County Pre-Trial Detention Facility; Ventura, CA\*
- Santa Clara County Main Jail; San Jose, CA\*
- Madera County Department of Corrections; Madera, CA\*
- Pitchess Detention Center; Castaic, CA\*
- Alameda County Santa Rita Jail; Dublin, CA\*
- Glenn County Adult Detention Center; Willow, CA\*

### Education:

Bachelor of Architecture with Honors  
University of Idaho

### Registrations:

Architecture

AK, AZ, CA, CO, CT, DE, District of Columbia, FL, ID, IL, KS, MD, MI, MN, MO, NE, NH, NJ, NY, OK, OR, PA, SD, TN, TX, UT, VA, VT, WA, WI, WY

### Affiliations:

- American Institute of Architects
- American Correctional Association
- American Jail Association
- AIA Committee on Architecture for Justice
- International Association of Chiefs of Police
- Nebraska Jail Standards Board Past Member
- National Institute of Corrections Task Force on Prison Construction Standardization & Techniques

### Years of Experience:

37

Private Correctional Facility Development

- La Palma Correctional Facility; Eloy, AZ
- San Diego Correctional Facility Replacement; San Diego County, CA
- Bay Correctional Facility Addition; Panama City, FL
- Gadsden Correctional Facility Addition; Quincy, FL
- McRae Correctional Facility; McRae, GA
- Stewart Correctional Facility; Lumpkin, GA
- Adams County Correctional Facility; Natchez, MS
- Bent County Correctional Facility Expansion II; Las Animas, CO
- Kit Carson Correctional Center Expansion; Burlington, CO
- Eden Detention Center – FBOP CAR 6 Improvements; Eden, TX
- East Mesa Renovation/Modifications; San Diego, CA
- Leavenworth Detention Center; Leavenworth, KS
- Hardeman County Correctional Facility; Whiteville, TN
- T. Don Hutto Correctional Facility; Taylor, TX
- Bent County Correctional Facility Expansion I; Las Animas, CO
- Prairie Correctional Facility Expansion; Appleton, MN
- Central Arizona Detention Center Phases III, IV & V; Florence, AZ
- Southern Nevada Women's Correctional Facility; North Las Vegas, NV
- Marion County Jail II; Indianapolis, IN
- Kit Carson Correctional Center; Burlington, CO
- Elizabeth Detention Facility; Elizabeth, NJ
- San Diego Detention Facility; East Mesa, CA
- California City Correctional Center; California City, CA
- Idaho Medium/Minimum Security Prison; Boise, ID
- Correctional Treatment Facility Renovation and Security Improvements; Washington, DC
- Crossroads Correctional Facility; Shelby, MT
- Florence Detention Facility; Florence, AZ
- Leavenworth Detention Center Expansions I, II & III ; Leavenworth, KS
- Red Rock Correctional Center; Eloy, AZ
- Saguaro Correctional Facility; Eloy, AZ
- Citrus County Correctional Facility; LeCanto, FL
- Lake City Correctional Center; Lake City, FL
- Crossroads Correctional Facility Expansion; Shelby, MT
- Idaho Correctional Facility Expansion; Boise, ID
- Idaho Prison Industries Building Conversion; Boise, ID
- Leo Chesney Community Correctional Center Facility Upgrades; Live Oak, CA
- Southwest Ranches Detention Center; Southwest Ranches, FL
- Stewart Correctional Facility – ICE Modifications; Lumpkin, GA
- Eden Detention Center Facility Upgrades; Eden, TX
- Crowley County Correctional Facility Expansion; Olney Springs, CO
- Guayama Correctional Center; Puerto Rico
- Ponce Adult Correctional Facility; Puerto Rico
- Ponce Young Adult Correctional Facility; Puerto Rico
- Hernando County Jail Addition; Brooksville, FL
- Nevada Southern Detention Center; Pahrump, NV
- Imperial County Probation/Juvenile Rehabilitation Center; El Centro, CA\*

State Correctional Facilities

- Bledsoe County Correctional Complex; Pikeville, TN
- State of Washington Multi-Custody Prison; Walla Walla, WA
- Nebraska Correctional Center for Women - Master Plan and Building Design; York, NE
- State of Illinois Medium Security Prison; IL
- State of Illinois Youth Center Addition; Harrisburg, IL
- Coyote Ridge Correctional Facility Expansion; Connell, WA



- Lincoln Correctional Facility/Control Room Remodel; Lincoln, NE
- Coffee Creek Correctional Facility; Wilsonville, OR
- New Lisbon Correctional Facility; New Lisbon, WI
- Tecumseh State Correctional Institution; Tecumseh, NE
- Waupun Correctional Institution Segregation Housing/Health Services Unit; Waupun, WI
- Green Bay Correctional Institution Master Plan; Green Bay, WI
- Solem Public Safety Center & Women's Prison; Pierre, SD
- Crossroads Correctional Facility; Cameron, MO
- Clallam Bay Corrections Center, Additions & Remodel; Clallam Bay, WA
- Iowa Correctional Institution for Women; Mitchellville, IA

#### Law Enforcement Facilities

- Northwest Area Station; Los Angeles, CA
- Council Bluffs Police Headquarters; Council Bluffs, IA
- Surprise Courts/Public Safety Center
- Moffat County Public Safety Center
- Women's Prison & Intake Center; Eugene, OR
- La Vista Police Facility; La Vista, NE
- Aberdeen Public Safety Building; Aberdeen, SD
- Douglas County Law Enforcement Center; Omaha, NE
- Forsyth County Sheriff's Administration Building; Winston-Salem, NC
- Beverly Hills Police/Jail Facility; Beverly Hills, CA
- Mills County Law Enforcement Center Feasibility Study; Glenwood, IA
- West Des Moines Police Station; West Des Moines, IA
- Sioux Falls Police Department Feasibility Study; Sioux Falls, SD
- Yakima Police Facility/Legal Center; Yakima, WA
- Security Police Operations Facility; Offutt AFB, NE
- Pierre Police Facility Study; Pierre, SD
- Dublin Police Station; Dublin, CA\*

#### Federal Government

- Wayne L. Morse United States Courthouse; Eugene, OR
- Roman L. Hruska U.S. Federal Courthouse; Omaha, NE
- Federal Correctional Complex, Administrative Maximum Security, U.S. Penitentiary, Federal Correctional Institute, and Federal Prison Camp; Florence, CO
- Leavenworth Cellhouse Remodel; Leavenworth, KS

#### Juvenile Facilities

- Inyo County Juvenile Facility; Inyo, CA
- San Diego Juvenile Hall; San Diego, CA
- Fairbanks Youth Facility; Fairbanks, AK
- McLaughlin Youth Center; Anchorage, AK
- Birch Cottage Youth Center Renovations; Chehalis, WA
- Josephine County Juvenile Detention Facility Feasibility Study; Grants Pass, OR

\* while at another firm



**Martin Berglund, AIA | Architect of Record/Project Manager**  
Principal, DLR Group

**Bio:**

Mr. Berglund has devoted the last decade of his professional career towards the planning and design of criminal justice related facilities such as jails, prisons, law enforcement, and courts facilities.

Mr. Berglund has an emphasized experience in architectural programming and design. He understands the special needs of criminal justice and law enforcement facilities and its users. His professional experience includes the preparation of feasibility studies, architectural space programs, site selection, architectural design and document production, and project budgeting and estimating.

Mr. Berglund has had significant involvement in a wide variety of criminal justice projects, including State and Private Correctional Facilities, Law Enforcement Facilities, and County Jails. His involvement is primarily focused in the areas of programming, pre-design and schematic design although he remains involved in the project throughout its completion to ensure that the concepts derived upon in the early stages are carried through completion.

**Experience:**

County Facilities

- Seward County Jail; Seward, NE
- Wright County Space Planning & Facility Needs Assessment; Buffalo, MN
- Hall County Department of Corrections; Grand Island, NE
- Saline County Law Enforcement Center; Wilber, NE
- South East Minnesota Regional Jail Needs Assessment; Winona County, MN
- White Earth Regional Jail Needs Assessment ; White Earth Indian Reservation, MN
- Central South Dakota Regional Jail; Pierre, SD
- Blaine County Law Enforcement Center Pre-Design Study; Hailey, ID
- Citrus County Jail and Courts Addition; Lecanto, FL
- Hall County Public Safety Center Remodel; Grand Island, NE
- Saline County Law Enforcement Center Addition; Wilber, NE
- Hancock County Jail and Sheriff's Department; Bay St. Louis, MS

Private Facilities

- San Diego Correctional Facility Replacement; San Diego County, CA
- La Palma Correctional Center; Eloy, AZ
- Eloy Detention Center Expansion; Eloy, AZ
- Adams County Correctional Facility; Natchez; MS
- Nevada Southern Detention Center; Pahrump, NV
- Crowley County Correctional Facility; Olney Springs, CO
- Cibola County Correctional Center FBOP Administration Addition; Milan, NM
- Central Arizona Detention Facility Expansion; Florence, AZ
- Leavenworth Detention Center Expansion; Leavenworth, KS
- Florence Correctional Facility Expansion; Florence, AZ
- Red Rock Correctional Center; Eloy, AZ
- Saguaro Correctional Facility; Eloy, AZ
- Alameda County - Glen E. Dyer Detention Facility Evaluation; Oakland, CA
- Eden Detention Center Facility Upgrades; Eden, TX
- Elizabeth Detention Center Renovation; Elizabeth, NJ
- Northeast Ohio Correctional Center Addition; Youngstown, OH
- Gadsden Correctional Facility Addition; Quincy, FL
- Idaho Correctional Facility Housing Expansion; Boise, ID
- Kit Carson Correctional Facility Expansion; Burlington, CO
- Leavenworth Detention Center Expansion II; Leavenworth, KS

Education:

Master of Architecture  
Master of Business Administration, High Distinction  
Bachelor of Science in Architecture, High Distinction  
University of Nebraska

Registrations:

AL, IA, LA, MS, NE, NJ, NM, NV, OH,  
OK WV, NCARB Certified

Affiliations:

- American Institute of Architects
- International Association of Chiefs of Police
- LEED Accredited Professional

Years of Experience:

16

| Martin Berglund, AIA | Architect of Record/Project Manager  
Principal, DLR Group

- McRae Correctional Facility FBOP Administration Addition; McRae, GA
- Northeast Ohio Correctional Facility Administration Addition; Youngstown, OH
- Southwest Ranches Correctional Facility; Southwest Ranches, FL
- Stewart Correctional Facility ICE Modifications; Lumpkin, GA
- Bay Correctional Facility Addition; Panama City, FL
- Bent County Correctional Facility Expansion II; Las Animas, CO
- Crossroads Correctional Facility Expansion; Shelby, MT
- Replacement Facility Entitlement Process; Otay Mesa, CA

State Facilities

- Bledsoe County Correctional Center; Pikeville, TN
- Nebraska Correctional Center for Women; York, NE
- Tecumseh State Correctional Institution; Tecumseh, NE
- 2,200 Bed Medium Security Prison; Illinois
- Deer Ridge Correctional Institution; Madras, OR
- Illinois Youth Facility; Harrisburg, IL
- Washington State Penitentiary Close Custody Expansion; Walla Walla, WA

Law Enforcement Facilities

- La Vista Police Facility; La Vista, NE
- Bay Village Police Facility; Cleveland, OH
- Northwest Area Station; Los Angeles, CA
- Lafayette Police Facility; Lafayette, CO
- Jefferson County Sheriff's Mountain Precinct; Evergreen, CO
- Aberdeen Public Safety Building Needs Assessment; Aberdeen, SD
- Canon City Police Facility Needs Assessment; Canon City, CO

Federal Facilities

- Federal Reserve Bank - Security Upgrades; Omaha, NE



## Jay E. Daubman, AIA | Project Architect

Senior Associate, DLR Group

### Bio:

Jay Daubman has over 16 years of experience in architectural design since receiving his degree. He interned with DLR for three years during his college years where he accumulated experience in architectural design as well as civil design.

Jay, as a Project Architect, coordinates various aspects of the development of construction documents and drawings. His current responsibilities include activities throughout all phases of projects including schematic design, design development, project schedule, client communication, construction documents and specifications, project coordination/management, shop drawing checking and construction services and administration.

Jay's project experience includes various project types including educational, commercial, industrial, and correctional facilities. He is currently specializing in Justice Facility design within DLR Group. He has worked on new construction projects as well as remodels, additions, and renovations. In the 13 years Jay has been with DLR Group, he has proved to be a talented, energetic project architect who has provided project design teams with valuable knowledge and support on a wide variety of projects.

### Experience:

#### County Detention Facilities

- Saline County Law Enforcement Center; Wilber, Nebraska
- Central South Dakota Regional Jail; Pierre, SD
- Hall County Jail; Grand Island, NE

#### State Correctional Facilities

- Deer Ridge Correctional Institution; Madras, OR
- State of Iowa Judicial Branch Building; Des Moines, IA
- Illinois Medium Security Prison; site to be determined
- Tecumseh State Correctional Institution; Tecumseh, NE
- Nebraska Correctional Center for Women; York, NE
- Nebraska Department of Correctional Services - Strategic Capital Facilities Plan

#### Federal Government

- Wayne L. Morse United States Courthouse; Eugene, OR
- Roman L. Hruska U.S. Courthouse; Omaha, NE

#### Private Correctional Facility Development

- Crowley County Correctional Facility Expansion; Olney Springs, CO
- Cibola County Detention Center, FBOP Admin. Offices Addition; Milan NM
- Bent County Correctional Facility Expansion II; Las Animas, CO
- Citrus County Detention Facility Expansion; Lecanto, FL
- Lake City Correctional Facility Expansion; Lake City, FL
- Crossroads Correctional Center Housing Addition/Remodel; Shelby, MT
- McRae Correctional Facility; McRae, GA
- Stewart Correctional Facility; Lumpkin, GA
- California City Correctional Center; California City, CA
- Kit Carson Correctional Facility; Burlington, CO
- Substance Abuse Treatment Center; Fallsburg, NY
- La Palma Correctional Facility; Eloy, AZ
- Red Rock Correctional Center; Eloy, AZ
- Saguaro Correctional Facility; Eloy, AZ
- Kit Carson Correctional Facility Expansion; Burlington, CO

#### Education:

Bachelor of Architecture  
Drury College - Hammons School of  
Architecture

#### Registrations:

Registered Architect  
AZ, CO, GA, IL, MT, NE, OR  
NCARB

#### Years of Experience:

16

Education:

M.S., Civil Engineering  
University of New Orleans, 1992

B.S., Civil Engineering  
Tulane University, 1987

B.A., Physics  
Xavier University of New Orleans, 1987

| Kerwin E. Julien, Sr., PE, MSCE | Civil Engineer  
President/Owner, Julien Engineering and Consulting, Inc.

Mr. Julien is the President and Owner of Julien Engineering and Consulting, Inc. He has over twenty two years experience on many engineering design and management projects mainly in Louisiana, Maryland, Washington, D.C., and Virginia. He has served the engineering needs of a diverse group of governmental agencies, industrial plants, commercial establishments, private residents, and other individuals and corporations. Mr. Julien is a registered professional engineer with active licenses in many states. He is responsible for engineering and overall general management of the company and provides oversight to all projects. Mr. Julien has direct experience in analysis, design, project management, construction administration, inspection, assessment, and project development. He has direct experience in buildings, stormwater drainage, sanitary sewerage, water supply, floodwalls, bulkheads, levees, earth retention, foundations, framing, and many other civil/structural related fields.

Education:

M.S., Civil Engineering  
Tulane University, 1978

B.S., Civil Engineering  
Punjab University, 1967

| Madan Kamboj, PE, MSCE | Civil Engineer  
Project Manager, Julien Engineering and Consulting, Inc.

Mr. Kamboj has more than 30 years experience engineering and managing projects for highways, bridges, buildings, water and sewer treatment plants, and parking garages. His team management experience includes supervising groups of engineers, technicians, inspectors and CAD operators on major design and construction projects with multi-million dollar budgets. He has knowledge of contract administration, negotiations, and maintenance of client relations. Mr. Kamboj introduced and implemented Teflon-stainless steel bearings and strip-seal joints for the first time in Louisiana for a six-lane bridge structure at the New Orleans International Airport. He designed and oversaw construction for post-tensioned spiral ingress and egress ramps with a 95 ft diameter, which was the first in the southeast US at the time in 1985.

Education:

B.S., Civil Engineering  
University of Pittsburgh, 1988

| Michael David Galey, PE | Civil Engineer  
Project Engineer, Julien Engineering and Consulting, Inc.

Mr. Galey has more than sixteen years of increasing responsibilities working on various civil/structural projects. He has expertise in the development and design of quality roadway and bridge projects. Of the many projects Mr. Galey has been involved in, he supervised and performed the inspection of all bridge structural components for the Pennsylvania Department of Transportation, District 11. He has the capability to effectively manage multiple priorities and projects while consistently producing high quality work on time and within budget. Mr. Galey repeatedly demonstrates his ability to lead and work effectively as part of a team, and influence people to cooperate and strive toward successful achievement of the project goal/outcome. He is a high-energy, enthusiastic and dependable individual excelling in a fast paced environment. Mr. Galey is able to think strategically and tactically, analyze complex information and make recommendations based on analysis. He is highly motivated to expand his knowledge base and possess excellent verbal and written communication skills. Mr. Galey has extensive experience with various engineering software programs and CADD.

Education:

B. Science, Civil Engineering/1970  
M. Science, Civil Engineering/1971

Registrations:

1977/Civil Engineering, La. Lic. No.  
16224

Years of Experience:

44

| **Kerry J. LaBauve, P.E.** | **Senior Structural Engineer**  
Vice President, Meyer, Meyer, LaCroix & Hixson, Inc.

**Bio:**

Mr. LaBauve serves as vice president of the firm and has substantial engineering experience in design and construction management of various types of projects including aviation projects, commercial, institutional and industrial buildings, marine structures, mooring and docking structures, conveyor systems, heavy lift rigging design, sanitary structures for water and sewerage treatment systems, transportation systems and steel or concrete bridge structures, retaining structures, drainage and pumping structures.

**Experience:**

Federal Prison Camp, U.S. Bureau of Prisons, Pollock – Design-Build - This project was conducted as a design-build concept. The structural engineering design services were provided in 1999 to accommodate two new buildings, parking and various recreational facilities, drainage design and structural design of buildings and foundations.

Federal Prison Camp, U.S. Bureau of Prisons, Pollock – Design-Build - The 1999 project was expanded in 2006. The civil and structural engineering design services were provided by MML&H as a sub-consultant. Services rendered included full site development to accommodate an additional housing unit plus a new 56,000 square foot multi-purpose warehouse facility, drainage design and structural design of buildings and foundations.

Renovation and expansion of Aircraft Hangar – Esler Airport, Pineville, LA: Forensic investigation of World War II vintage aircraft hangar structure to accommodate installation of new overheard monorail cranes. Complete structural design of new addition to this hangar including steel super structure, access door systems and concrete foundations. Project cost - \$8,000,000.

Consolidated Maintenance Facility – LANG at Esler Field Airport, Pineville, LA: Complete structural engineering for \$53,000,000. Maintenance facility for Louisiana Army National Guard. Design of clear span open floor maintenance buildings with rigid frame features, steel bracing, concrete masonry unit walls, overhead bridge cranes and extensive concrete foundations.

Roll Cover Expansion for Voith Paper, Lincoln Builders, Ruston – This 1997 design-bid construct project provided a 49,000 S.F. addition to an existing manufacturing facility designed by MMLH in 1989. Services included prime A/E design with significant structural engineering of building and machinery foundation systems.

Metal Shop Expansion for Voith Paper, Lincoln Builders, Ruston – This 2009 design-bid construct project provided a 15,600 S.F. addition to an existing manufacturing facility design by MMLH in 1989. Services included prime A/E design with significant structural engineering of building and machinery foundation systems.

Ambulatory Care Center, St. Frances Cabrini Hospital, Alexandria, Louisiana: This project involved structural design of four story steel frame structure with concrete foundation on deep drilled cassions. The building wad designed to provide access to three adjacent buildings at various levels.

| Kerry J. LaBauve, P.E. | Senior Structural Engineer  
Vice President, Meyer, Meyer, LaCroix & Hixson, Inc.

Port of Alexandria, Louisiana: Structural design of various projects. Included the petroleum off-load facility (river structures), steel bulkhead dock, general cargo facility (river structures, 40-ton overhead crane way, warehouse) and bulk fertilizer handling facility (river structures, conveyors, concrete warehouse and two domes) and an operations center.

Alexandria Levee Park Recreation Area / Red River Waterway District and U.S. Army Corps of Engineers: Steel and concrete river / dock structures for recreation facilities that included an amphitheater, river outlook structure, boat dock, boat launch, rest facilities, pavilions, picnic shelters, roads and bike trails.

Haynes Manufacturing Co. Office Building, Lincoln Builders, Arcadia – This design-build project provided a 30,392 S.F. addition to an existing manufacturing facility. Services included prime A/E design with significant structural engineering of building and machinery foundation systems.

Elevated Parking Garage, City of Alexandria, Louisiana: Design of a three level cast-in-place post-tensioned concrete garage structure and drilled shaft foundation system.

Industrial Zeolite Chemical Plant, Meeker, Louisiana: Complete structural and site civil engineering design for a \$15-million structural/civil construction. Design of steel-frame structures and concrete foundations throughout the new plant to support all process equipment. Design of control house, boiler house, and filter press buildings including steel superstructures and concrete foundations.

Rinker – Hydroconduit Concrete Pipe Plant, Alexandria, Louisiana: Complete structural engineering for a \$5.5-million structural / civil construction package. Design of a large concrete conduit manufacturing facility steel frame enclosure and extensive foundations including underground pits and floor trenching.

Coughlin Sanders Performing Arts Theater, Alexandria, LA: Structural design of \$8,500,000 multi-level theater structure. Design of steel roof system, concrete masonry bearing system, concrete auditorium, seating, flyloft system and augercast pile foundation system.



Education:

B. Science, Civil Engineering/1980

M. Science, Civil Engineering/1982

Registrations:

1985/Civil Engineering, La. Lic. 22011

Years of Experience:

29

| L. Keith Hillman, P.E. | **Structural Engineer**  
Meyer, Meyer, LaCroix & Hixson, Inc.

**Bio:**

Mr. Hillman has over 27 years of professional civil and structural engineering experience in the design and construction management of projects including commercial, institutional and industrial buildings, marine structures, mooring and docking structures, sanitary structures for water and sewerage treatment systems, transportation systems and steel or concrete bridge structures, retaining structures, drainage and pumping structures, pavement design, and parking area layouts and design.

**Experience:**

England Authority Airpark, Alexandria, Louisiana – Responsible for design, specifications and construction administration of the structural system for the passenger terminal building,

Other structural projects designed at England Industrial Airpark include:

- Fire Station
- Intermediate Staging Base for Joint Readiness Training Center, U.S. Army Base, Fort Polk.
- Foundation for Antenna Tower

Federal Prison Camp, U.S. Bureau of Prisons, Pollock – Design-Build - This project was conducted as a design-build concept. The structural engineering design services were provided in 1999 to accommodate two new buildings, parking and various recreational facilities, drainage design and structural design of buildings and foundations.

Federal Prison Camp, U.S. Bureau of Prisons, Pollock – Design-Build - The 1999 project was expanded in 2006. The civil and structural engineering design services were provided by MML&H as a sub-consultant. Services rendered included full site development to accommodate an additional housing unit plus a new 56,000 square foot multi-purpose warehouse facility, drainage design and structural design of buildings and foundations.

Boise Cascade Corporation, Boyce, Louisiana - \$25 million – Responsible for foundation design of building columns and equipment required to manufacture engineered wood products, including the world's largest hot press. Design slabs and pavements for equipment, lift trucks and 18-wheel trucks.

Heart Center, Rapides Regional Medical Center, Alexandria, Louisiana - \$5 million – Responsible for design and project management of two-story building including deep foundations, concrete floor slabs, steel beams and columns.

Nursing Home of Eunice, Eunice, Louisiana - \$5 million – Responsible for structural design of multi-winged building including roof framing system and concrete floor slabs.

Calvary Baptist Church Expansion, Alexandria, Louisiana - \$9 million – Responsible for structural design and project management of two-story education buildings. Also designed parking lots, driveways, and subsurface drainage system.

Consolidated Maintenance Facility – LANG at Esler Field Airport, Pineville, LA: Complete structural engineering for \$53,000,000. Maintenance facility for Louisiana Army National Guard. Design of clear span open floor maintenance buildings with rigid frame features, steel bracing, concrete masonry unit walls, overhead bridge cranes and extensive concrete foundations.

| L. Keith Hillman, P.E. | Structural Engineer  
Meyer, Meyer, LaCroix & Hixson, Inc.

Peabody Magnet High School, Alexandria, Louisiana - \$19 million – Responsible for structural design and project management of two-story classroom building and ancillary facilities, including roof framing, concrete floor slabs, and deep foundations.

Georgia Gulf V.C.M. Plant Expansion - \$3 million – Responsible for design of multi-story structural steel superstructure concrete floor slabs for support of various mechanical equipment, and deep foundations.

Replacement Hospital, Huey P. Long Medical Center, Pineville, Louisiana \$63 million (est.) – Designed portions of an eight-story tower steel frame structures and concrete foundation system with basement.

Industrial Zeolite Chemical Plant, Meeker, Louisiana: Complete structural and site civil engineering design for a \$15-million structural/civil construction. Design of steel-frame structures and concrete foundations throughout the new plant to support all process equipment. Design of control house, boiler house, and filter press buildings including steel superstructures and concrete foundations

Ambulatory Care Center, St. Frances Cabrini Hospital, Alexandria, Louisiana: This project involved structural design of four story steel frame structure with concrete foundation on deep drilled cassions. The building wad designed to provide access to three adjacent buildings at various levels.

Port of Alexandria, Louisiana: Structural design of various projects. Included the petroleum off-load facility (river structures), steel bulkhead dock, general cargo facility (river structures, 40-ton overhead crane way, warehouse) and bulk fertilizer handling facility (river structures, conveyors, concrete warehouse and two domes) and an operations center.

Registrations:

LA license #: 28519

**| Damien W. Serauskas, PE | Mechanical Engineer**  
Professional Engineering Services

**Bio:**

Operating as a sole proprietor, Damien W. Serauskas, P.E. provides professional engineering services to a select group of clients. Responsibilities include HVAC, plumbing, fire protection, and site utilities systems design, plan review, due diligence and report preparation, general consulting, specifications preparation, computer aided design and drafting (CADD), life cycle cost analysis, automated controls and energy management system design, cost estimating, expert testimony, and construction administration.

Notable projects include:

- Rehabilitation and Restoration of the Ritz Carlton Hotel Complex, New Orleans, LA / Estimated Value – \$85 Million
- Jefferson Parish Courts Complex – Central Plant and Primary-Secondary Chilled Water Distribution Design and C.A. / Estimated Value - \$3.0 Million
- City of New Orleans Energy Management Program - Renovation to City of New Orleans Traffic / Municipal Courts Building – Chilled Water and Steam Central Plant, Heating Hot Water Conversions / Estimated Value - \$2 Million
- City of New Orleans Energy Management Program - Renovation to City of New Orleans Civil Courts Building – Chilled Water Central Plant / Estimated Value - \$0.5 Million
- City of New Orleans Energy Management Program - Renovation to City of New Orleans Criminal Courts Building – Chilled Water and Steam Central Plant / Estimated Value - \$0.5 Million
- St. Theresa Hospital – Kenner, LA / Estimated Value - \$13 Million
- Muses Apartment Complex, New Orleans, LA / Estimated Value - \$25 Million
- University of New Orleans Jefferson Center – Chiller and Pump Replacements
- University of New Orleans, Science Building M/E/P Master Plan
- University of New Orleans, Satellite Chilled Water and Boiler Plant Renovations, Lafitte Village Student Housing
- City of New Orleans – St. Bernard Recreation Center Fire Alarm Improvements

This list represents only a highlighted portion of a multitude of projects currently under design, construction, and/or completed.

Education:

B.S. in Electrical Engineering  
Tulane University, 1988

Registrations:

Professional Engineer registered in  
Louisiana since 1998 (PE0027699)

Affiliations:

- National Society of Professional Engineers
- Louisiana Engineering Society
- NFPA

Years of Experience:

18

| Maffitt Kimball Schlafly, P.E. | **Electrical Engineer**  
Principal, Schlafly Engineering, LLC

**Experience:**

Project Management

Directed electrical systems engineering for a variety of projects including:

- Special Forces Operation Facility, Stennis Space Center, MS
- Port of New Orleans Wireless Broadband Distribution, New Orleans, LA
- Trinity Yachts Construction Facilities, New Orleans, LA and Gulfport, MS
- Orleans Parish Temporary Jails, New Orleans , LA
- Jazzland Theme park, New Orleans, LA
- Hollywood Casino and Hotel, Shreveport, LA
- Avondale Shipyards Computer Center, Bridge City, LA
- University of New Orleans Business Administration Building

Provided electrical subsystem design in the following categories:

- Low and medium voltage power distribution.
- Lighting design.
- Fire detection.
- Lightning protection.
- Intrusion detection.
- Voice and data distribution.
- Access control.
- CCTV and video/audio distribution.
- Multi-media presentation systems.
- Computer room power systems.

Management/Supervision

Directed group of engineers and drafters in the completion of electrical system designs for construction projects.

Client Development

Worked with numerous architectural firms and contractors to complete projects.



## F. Wally Riffle | Security Hardware

Senior Principal, R & N Systems Design, LLC

### Bio:

Mr. Riffle has dedicated his career to the design and construction of correctional facilities and more specifically security systems design for detention and security electronics equipment. His expertise is attested to by the successful completion of over 250 projects over the past 33 years. Over the past seven years Mr. Riffle has served as executive team leader with R&N Systems Design on over 50 projects. In addition, he has had direct involvement in assessments and evaluations of existing security systems and equipment as a part of retrofit projects in older facilities. Previously, he served as an officer responsible for contract administration and detention design for a leading security contracting and systems manufacturing company. Mr. Riffle has served as the architect of record on a number of projects, but more specifically has focused the majority of his career on the design of security systems. While serving clients in these roles, he has gained a complete and thorough knowledge that enables him to respond to the client's needs.

Over the years he has had direct responsibilities for the design, administration, equipment purchasing, installation, and system fabrication responding to the needs of the construction industry. This type of hands on experience has been with all sizes of projects for State, Counties, Federal Government and Private Operators.

### Experience:

#### Private Facilities

- San Diego Correctional Facility Replacement; San Diego County, CA
- La Palma Correctional Facility; Eloy, AZ
- Kit Carson Correctional Facility Expansion; Burlington, CO
- Bent County Correctional Facility Expansion; Las Animas, CO
- Adams County Correctional Facility; Natchez, MS
- Southwest Ranches Correctional Facility; Southwest Ranches, FL
- Crowley County Correctional Facility, Housing Expansion; Olney Springs, CO
- Leavenworth Detention Center Expansion II; Leavenworth, KS
- Leavenworth Detention Center Expansion III; Leavenworth, KS
- Shelby County Controls Replacement; Memphis, TN
- Lake City Housing Expansion; Lake City, FL
- Red Rock Correctional Facility; Eloy, AZ
- Citrus County Detention Facility Expansion; Lecanto, FL
- Saguaro Correctional Facility; Eloy, AZ
- Bay County Correctional Facility Addition; Panama City, FL
- Gadsden County Correctional Center Addition; Quincy, FL
- Houston Processing Center Expansion, INS Facility; Houston, TX
- Non-Lethal Electrified Perimeter Detection Retrofits; Ten Facilities
- Security Systems Retrofit at Existing Facilities; Five Facilities
- Trousdale County Correctional Center; Hartsville, TN

#### State Facilities

- Bledsoe County Correctional Complex; Pikeville, TN
- Chillicothe Women's Correctional Facility; Chillicothe, MO
- New Mexico Penitentiary; Santa Fe, NM
- Nebraska Correctional Facility for Women; York, NE
- CNMCF Mental Health Facility; State of New Mexico
- CNMCF Lock Replacement; State of New Mexico
- Deer Ridge Correctional Institution; Madras, OR
- Wyoming Medium Correctional Institution; Torrington, WY
- North Fork Correctional Facility Addition; Oklahoma City, OK

#### Education:

Bachelor of Architecture  
University of Arkansas

#### Registrations:

NCARB Certified  
Registered Architect  
TN

#### Years of Experience:

33

#### **Detention Facilities**

- Hancock County Jail; Bay St. Louis, MS
- Robertson County Jail; Springfield, TN
- Scott County Justice Complex; Huntsville, TN
- Kenton County Detention Facility; Covington, KY
- Santa Cruz County Administrative & Criminal Justice Complex; Nagales, AZ
- Hickman County Jail; Centerville, TN
- Logan County Jail; Guthrie, OK
- Tallahatchie County Correctional Facility; Tutwiler, MS
- Noble County Jail; Perry, OK
- Roane County Sheriff's Office and Detention Center; Kingston, TN
- Shelby County Jail Controls Replacement; Memphis, TN
- Hall County Department of Corrections; Grand Island, NE
- Scott County Jail; Waldron, AR
- Saline County Law Enforcement Center; Wilber, NE
- Miller County Correctional Facility; Texarkana, AR
- Desoto County Jail Addition; Hernando, MS
- Sauk County Law Enforcement Center; Baraboo, WI
- Boone County Law Enforcement Center; Boone, Iowa
- Dyer County Law Enforcement Center; Dyersburg, TN
- Highlands County Courthouse and Jail Expansion; Sebring, FL
- Adult/Juvenile Detention and Rehabilitation Center - San Carlos Apache Tribe; San Carlos, AZ
- Johnson County Jail; Mountain City, TN
- Washington County Jail; Fayetteville, AR
- Cibola County Jail; Grants, NM
- Marshal County Jail; Lewisburg, TN
- Sandoval County Jail Expansion; Bernalillo, NM
- El Paso County Courthouse; Colorado Springs, CO
- Columbia County Jail Addition; Portage, WI
- Fayette County Criminal Justice Center; Oakland, TN
- Gibson County Jail and Sheriff's Office; Trenton, TN
- Perry County Jail and Sheriff's Office; Linden, TN
- Saline County Jail; Benton, AR
- White County Correctional Facility; Searcy, AR

#### **Federal Facilities**

- USP Florence – Special Housing; Florence, CO
- Houston Processing Center Expansion INS Facility; Houston, TX

#### **Juvenile Facilities**

- Bernalillo County Juvenile Facility – Addition and Remodel; Albuquerque, NM
- Desoto County Juvenile Facility – Addition; Hernando, MS
- Yuma County Juvenile Jail and Courthouse; Yuma, AZ
- Grant County Juvenile Detention Center – Remodel; Silver City, NM

#### **Law Enforcement Facilities**

- Lafayette Police Facility; Lafayette, CO



## Frank A. Niedzwiedz, PE | Security Hardware/Low Voltage Systems

Senior Principal, R & N Systems Design, LLC

### Bio:

Mr. Niedzwiedz has dedicated his career to justice and correctional facilities. He has focused on the low voltage electronics systems that served the security and Life-Safety needs of the construction industry. Over the past seven years, he has had a hands-on role in the design of over 50 low-voltage system projects representing R&N Systems Design as the lead design engineer. Prior to this he served as Director of Engineering for design and fabrication of security equipment for a leading security contracting and systems manufacturing company. Mr. Niedzwiedz is a licensed electrical engineer in multiple states.

Mr. Niedzwiedz has an extensive background in a full range of low voltage security electronic systems utilized in the design of correctional facilities. More specifically, his responsibilities have included systems design, fabrication documents, and construction administration while utilizing the latest technologies to serve the client's needs. His years of education and experience have enabled him to deal with the integration of complex low voltage systems on all size projects for state and local jurisdictions.

### Experience:

#### Private Facilities

- San Diego Correctional Facility Replacement; San Diego County, CA
- La Palma Correctional Facility; Eloy, AZ
- Kit Carson Correctional Facility Expansion; Burlington, CO
- Bent County Correctional Facility Expansion; Las Animas, CO
- Adams County Correctional Facility; Natchez, MS
- Southwest Ranches Correctional Facility; Southwest Ranches, FL
- Crowley County Correctional Facility, Housing Expansion; Olney Springs, CO
- Leavenworth Detention Center Expansion II; Leavenworth, KS
- Leavenworth Detention Center Expansion III; Leavenworth, KS
- Shelby County Controls Replacement; Memphis, TN
- Lake City Housing Expansion; Lake City, FL
- Red Rock Correctional Facility; Eloy, AZ
- Citrus County Detention Facility Expansion; Lecanto, FL
- Saguaro Correctional Facility; Eloy, AZ
- Bay County Correctional Facility Addition; Panama City, FL
- Gadsden County Correctional Center Addition; Quincy, FL
- Houston Processing Center Expansion, INS Facility; Houston, TX
- Non-Lethal Electrified Perimeter Detection Retrofits; Ten Facilities
- Security Systems Retrofit at Existing Facilities; Five Facilities
- Trousdale County Correctional Center; Hartsville, TN

#### State Facilities

- Bledsoe County Correctional Complex; Pikeville, TN
- Chillicothe Women's Correctional Facility; Chillicothe, MO
- New Mexico Penitentiary; Santa Fe, NM
- Nebraska Correctional Facility for Women; York, NE
- CNMCF Mental Health Facility; State of New Mexico
- CNMCF Lock Replacement; State of New Mexico
- Deer Ridge Correctional Institution; Madras, OR
- Wyoming Medium Correctional Institution; Torrington, WY
- North Fork Correctional Facility Addition; Oklahoma City, OK

#### Detention Facilities

- Hancock County Jail; Bay St. Louis, MS
- Robertson County Jail; Springfield, TN
- Scott County Justice Complex; Huntsville, TN

#### Education:

Bachelor of Science, Electrical Engineering  
Christian Brothers University

#### Registrations:

NCEES

Professional Engineer

AZ, AR, CA, CO, FL, GA, ID, IL, IA, KS,  
KY, MN, MS, MO, MT, NE, NM, NV, OH,  
OK, OR, SD, TN, TX, WA, WI, WY

#### Affiliations:

- National Society of Professional Engineers
- Tennessee Society of Professional Engineers
- BICSI

#### Years of Experience:

26



- Kenton County Detention Facility; Covington, KY
- Santa Cruz County Administrative & Criminal Justice Complex; Nagales, AZ
- Hickman County Jail; Centerville, TN
- Logan County Jail; Guthrie, OK
- Tallahatchie County Correctional Facility; Tutwiler, MS
- Noble County Jail; Perry, OK
- Roane County Sheriff's Office and Detention Center; Kingston, TN
- Shelby County Jail Controls Replacement; Memphis, TN
- Hall County Department of Corrections; Grand Island, NE
- Scott County Jail; Waldron, AR
- Saline County Law Enforcement Center; Wilber, NE
- Miller County Correctional Facility; Texarkana, AR
- Desoto County Jail Addition; Hernando, MS
- Sauk County Law Enforcement Center; Baraboo, WI
- Boone County Law Enforcement Center; Boone, Iowa
- Dyer County Law Enforcement Center; Dyersburg, TN
- Highlands County Courthouse and Jail Expansion; Sebring, FL
- Adult/Juvenile Detention and Rehabilitation Center - San Carlos Apache Tribe; San Carlos, AZ
- Johnson County Jail; Mountain City, TN
- Washington County Jail; Fayetteville, AR
- Cibola County Jail; Grants, NM
- Marshal County Jail; Lewisburg, TN
- Sandoval County Jail Expansion; Bernalillo, NM
- El Paso County Courthouse; Colorado Springs, CO
- Columbia County Jail Addition; Portage, WI
- Fayette County Criminal Justice Center; Oakland, TN
- Gibson County Jail and Sheriff's Office; Trenton, TN
- Perry County Jail and Sheriff's Office; Linden, TN
- Saline County Jail; Benton, AR
- White County Correctional Facility; Searcy, AR

#### Federal Facilities

- USP Florence – Special Housing; Florence, CO
- Houston Processing Center Expansion INS Facility; Houston, TX

#### Juvenile Facilities

- Bernalillo County Juvenile Facility – Addition and Remodel; Albuquerque, NM
- Desoto County Juvenile Facility – Addition; Hernando, MS
- Yuma County Juvenile Jail and Courthouse; Yuma, AZ
- Grant County Juvenile Detention Center – Remodel; Silver City, NM

#### Law Enforcement Facilities

- Lafayette Police Facility; Lafayette, CO



| C. Mitch Claborn | Detention Equipment Subcontractor  
President/CEO, Cornerstone Detention Products

Bio:

C. Mitch Claborn, the Company's president and CEO, has over thirty years of experience in sales, management, manufacturing, engineering, and construction. Mitch has held positions in sales, engineering, project management, and construction management. Since its inception over ten years ago, he has led Cornerstone from two employees to over fifty. In addition, revenue has increased 44.85% per year. He is also knowledgeable in the design/build area of prison and jail construction. Mitch has provided consulting services for several major architectural firms.

| Shannon A. Claborn | Detention Equipment Subcontractor  
Vice President Business Development and Preconstruction Director, Cornerstone Detention Products

Bio:

As Preconstruction Director, Shannon supervises a department of five, which is responsible for Cornerstone's estimating, contracts, scheduling, and purchasing. He has over twenty-five years experience in sales and customer service. He specializes in product knowledge, problem solving, and customer relations.

Education:

Brother Martin High School

B.S. in Business Management  
University of New Orleans

Licenses:

- Building Construction (Mississippi and Louisiana)
- Municipal and Public Works Construction ((Mississippi and Louisiana)
- Mechanical Work (State Wide) (Mississippi and Louisiana)
- Master Plumber (State Wide) (Mississippi and Louisiana)

Affiliations:

- Former President of Mechanical Contractors Association of New Orleans
- Former Director of Associated General Contractors of America
- Member of American Society of Plumbing Engineers (ASPE)
- Former Member of the State Licensing Board for State of Louisiana

| David R. Gallo | Mechanical Subcontractor  
President, Gallo Mechanical, LLC

Experience:

- 1981 – 1984: Estimator and Project Coordinator on Building, Industrial and Mechanical

Construction Projects:

- 1984 - 1991: Chief Estimator and Operations Manager – ran entire operations in estimating and construction of large building, industrial and mechanical construction projects.
- 1991 – Present: Appointed President in December 1991. The company, under my direction, is continually growing in the large Building, Industrial and Mechanical construction market.

Education:

Brother Martin High School

Tulane University

Licenses:

Master Plumber

Affiliations:

- Board Member of American Society of Heating, Refrigeration, and Air Conditioning Engineers (ASHRAE)
- Member of American Society of Plumbing Engineers (ASPE)

| Stephen P. Gallo | Mechanical Subcontractor  
Executive Vice President, Gallo Mechanical, LLC

Experience:

- 1982 – 1998: Estimator
- 1998 – Present: Executive Vice President

## | Hi-Tech Electric, Inc. | Electrical Subcontractor

For more than a decade as a merit shop contractor, we have demonstrated our ability to perform as a valuable member of a construction team.

Hi-Tech Electric, Inc. has completed over 2,043 projects ranging from \$10,000 to \$10,000,000. We are extremely proud that a great number of our projects are with repeat customers. Our client list is quite impressive and a complete list of references is available upon request.

Hi-Tech Electric has a strong equity base along with an established bank line of credit which enables us to meet all operational funding responsibilities. Hi-Tech Electric's financial strength and demonstrated ability to perform gives our bonding company the confidence to write bonds in the lower 8 figure range on a single project with an aggregate bonding program to the upper - 8 figure range. Insurance coverages are in place with adequate limits to meet any customer's requirements.

Our management team consists of industry experience professionals, with high standards of competency, integrity, and client satisfaction. This gives us the capability of handling many types of projects, including design build projects. Hi-Tech Electric's professional staff, quality work, quality people, high standards of performance and industry knowledge allows Hi-Tech Electric to assist in conceptual estimating and value engineering which are often required to meet project budgeting requirements.

Training is a never ending process for our employees. National Electric Code Seminars, Equipment Operation classes, Illumination Society courses and apprenticeship schooling are examples of the efforts put forth outside the normal work day by Hi-Tech employees in their quest to achieve quality.

Establishing a health insurance plan, retirement plan, paid holidays and vacations have shown employees a strong commitment from Hi-Tech ownership, allowing us to retain quality personnel at all levels, from upper management to entry level electricians.

#### Education:

- National Institute Engineering Technologies (NICET) Engineering Technician
- AIA-Construction Specifications Institute
- Qualifying Party-LA State Contractors License
- Qualifying Party-LA State Fire Protection
- Qualifying Party-LA State Security License

#### Registrations:

- 1988, Texas Planning Superintendent-Current # 218PL
- 1991, Louisiana NICET Certified-Current / #88939 Certification
- 1995, Louisiana Security License-Current / LA BF-202
- 1997 RCDD Registered Communications-Current-BISCI
- 1999 Authority for General Contractors License # 30465

#### Years of Experience:

24

## **Keith B. Simpson | Security Subcontractor**

President/CEO, Simpson Security Systems, Inc.

#### **Bio:**

Keith has 26 years experience in Integrated Security Electronics and Special Systems work and the founder of the firm. Keith worked for Metroplex Control and Security Systems, Inc. of Dallas TX, from 1985 to 1991. His duties started as installation technician where school and training at Devry Institute were provided. Business classes at Richmond College included job costing and business finance. In 1987 he was promoted to Senior Field Supervisor and by the end of 1989, he was installation manager of this Fortune 500 listed company. His duties consisted of Engineering and Design, AutoCAD, Project Managing, Scheduling with CPM charts, Bar Charts, Bids, Sales and Purchasing. Keith's duties at FCI-Aliceville will include Contract Manager, Design/Engineer and CPM Charts. Keith was Project Manager and Project Superintendent for many large Integrated Security Electronics projects while employed by MCS, Inc. Keith was assigned personally to Wackenhut Corrections. MCS, Inc. exclusively completes most national projects for this company. A few of the large projects Keith was in charge of were: Division 17 Leader on "BOP's latest and current TDG to date. Division 17 "was a very good Division 17 project with all the bells and whistles". Gary Smith FBOP

- Thorough knowledge of design/build process, especially regarding BOP projects.
- Active participant in successful partnering program at USP Pollock, USP-II Coleman, FCI-Pollock, USP Lompoc and many BOP projects.
- Excellent working relationship with proposed DLR, Miguels Deloach, Design/Build team including most large subs.

#### **Experience:**

Construction Manager - D/B FCI-Pollock Louisiana \$6.5M

This \$6.5 M project was a design/build with Flintco and a complete turn-key Division 17 project. Several new systems to both SSS, Inc. and the BOP was implemented and installed successfully. SSS, Inc. worked closely with the GC and BOP on a fiber optic perimeter system and a new design on the PSE enclosures incorporating GFI breakers, redundancy fiber self healing loop and incorporated touchscreen technology in this system. SSS design a redundant PLC system and new touchscreen specification. SSS provided the BOP with a top grade project including all raceways and wire installation. SSS was complimented by the BOP of doing whatever it takes to complete a project with many issues that was beyond the control of SSS. SSS performed all work with no subcontractors and completed fire alarm, MATV, Fiber, CCTV, DVRS, PLC, Controls, Intercom, PA System, Door Controls, Inmate Duress and exceeded all specifications.

Design/Build Technical Designer - D/B U. S. Penitentiary Lompoc

Lompoc, CA. \$2.0M+

SSS both designed and installed a new Division 17 Project including new SHU, R&D, sally port and Guard Tower Control. Installed the facilities first PLC and Controls. A new perimeter system was installed and an added Sally port, Controls in Guard Towers, CCTV, Main Console and separated one large facility into two separate institutions with "swing" controls.

Other Experience and Qualifications relevant to the proposed project: Division 17  
USP-Pollock

USP-II Coleman

FCI-Forrest City

FDC & FCI Oakdale

FCI-Pollock Warehouse and Camp

## | Section 6 |

Past performance on public projects, including any problems with time delays, cost overruns, and design inadequacies for which the designer was held to be at fault.

## | 6. Past Performance on Public Projects |

The majority of clients for which DLR Group provides design services are in the public sector. Examples of which includes Federal, State, County, and Municipal governments, School Districts, Universities, etc. We have experience with many different delivery methods, stretching from traditional Design/Bid/Build to Design/Build/Finance/Lease arrangements.

Throughout our broad experience we have had projects that have experienced time delays, cost overruns, and design inadequacies. However, our track record does not exhibit examples of such that can be considered outside of what is to be considered normal standard of care for our profession. In fact, the vast majority of our projects have been delivered successfully within established budgetary and schedule parameters. Our average ratio for change orders initiated by the design team is less than 1%. Well below the industry average.

We have always accepted responsibility for design errors and omissions that unfortunately do occur on occasion. For this reason we carry professional liability insurance.

The remainder of our design/build team members are similarly very accustomed to working in the public sector. No problems of significance outside normal standard of care can be attributed to any member of the design team. All design professionals on our team carry adequate professional liability insurance in the unlikely event any design issues of substance were to arise.

For further discussion on this point, please see item #9. Also see item #10 – Client references.

## | Section 7 |

Any project-specific criteria as may apply to project needs.

## | 7. Project-Specific Criteria |

The greatest strength of our team is our experience with the public sector, and corrections projects in particular and our familiarity in working with constrained sites. These combined traits give us the ability to consistently deliver projects that are within budget and schedule constraints.

We have proven on prior design-build projects that we are able to deliver complex projects under very strenuous time parameters. Two examples of this are:

1. DLR Group delivered to CCA, in partnership with JE Dunn Construction, a 3,240-bed all cell prison facility within 15 months from start to finish. In fact, the first 1,000 inmates were able to occupy the first phase of the facility only 10 months following the beginning of design.
2. The Migue Deloach Company LLC – In the early 1980s there was a prison riot at the Alien Deportation Center in Oakdale, Louisiana. The following buildings were completely destroyed in the riot: Entry Building, Administration, Medical/Education, Food Service Building, Chapel and Recreation Building. Wayne Deloach (then Vice President of Ratcliff Construction Co.) was the onsite project manager for the reconstruction of these buildings. The above named buildings were razed to the slab and completely reconstructed in a 5 month period for the US Department of Justice Federal Bureau of Prisons. The reconstruction came in on schedule at a cost of \$7,094,663.

Our familiarity with work in the public sector has equipped us with the knowledge and familiarity of how this type of work is executed. We are well accustomed to working with fixed, not-to-exceed budgets, aware of sometimes rigorous and complicated review and approval processes, and familiar with working under the scrutiny of the public eye.

Our design team will provide you a very cost effective, staff efficient, and low maintenance solution to meet your needs. Our contracting team will execute the design within the given time parameters and with the highest degree of craftsmanship and attention to detail, utilizing materials appropriate for this very demanding environment.

The composition of our team, with major sub contractors and consultants local to the New Orleans area will further enhance our ability to execute the project on time. Local knowledge of site qualities as well as connections with utility and permitting entities will prove extremely valuable, especially during the early phases of development.

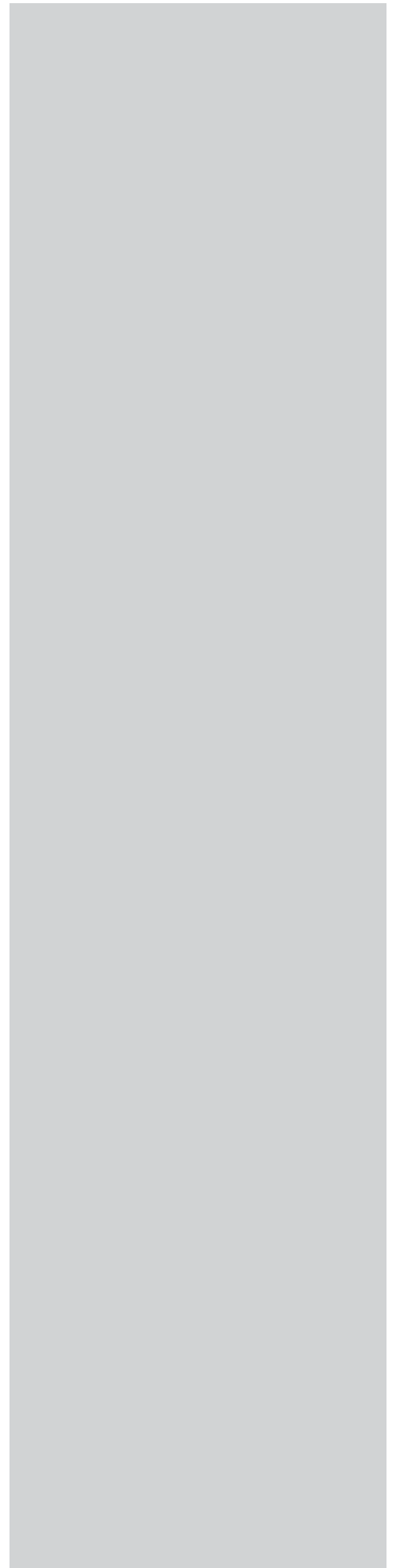


## | Section 8 |

Past and current professional accomplishments, for which opinions of clients or former clients and information gathered by inspection of current or recent projects may be considered.

## | 8. Past and Current Professional Accomplishments |

The projects presented on the following pages represent examples of past performance where services provided by our design/build team members were provided. For additional information, also see section 10 – References.



## | Miques Deloach Company, LLC |

Louisiana Youth Academy, Alexandria, LA  
Rapides Parish Law Enforcement District  
\$4,277,990

INS Administration Building, Oakdale, LA  
U. S. Department of Justice Federal Bureau of Prisons  
\$876,176

Alien Deportation Center Phase I Dormitory Buildings 9, 10 and 11  
U. S. Department of Justice Federal Bureau of Prisons  
\$6,966,178

### Alien Deportation Center Phase II

- Entry Building I
- Administration 2
- Medical/Education 3
- Food Service Bldg. 4
- Warehouse Bldg. 5
- Chapel Bldg. 6
- Recreation Bldg. 7
- Outside Warehouse 8

U. S. Department of Justice Federal Bureau of Prisons  
\$6,080,300

Federal Deportation Center Segregated Housing Unit No. 15  
U. S. Department of Justice Federal Bureau of Prisons  
\$2,107,000

### Alien Deportation Center Reconstruction

- Entry Building 1
- Administration 2
- Medical/Education 3
- Food Service Bldg. 4
- Chapel Bldg. 6
- Recreation Bldg. 7

U. S. Department of Justice Federal Bureau of Prisons  
\$7,094,663

### Federal Detention Center - Phase II

- Entry Building 1
- INS Building 2
- Food Service 3
- Recreation Center 5
- Housing Unit 8
- Gate House 16

U. S. Department of Justice Federal Bureau of Prisons  
\$10,882,692

Federal Detention Center Warehouse #21  
U. S. Department of Justice Federal Bureau of Prisons  
\$485,800

Federal Detention Center Training Center Building  
U. S. Department of Justice Federal Bureau of Prisons  
\$867,850

| Migue Deloach Company, LLC |

Federal Detention Center - Phase III

- Multi-Purpose Bldg. 4
- Mechanical Service 6
- Storage Building 6A
- Housing Units 9 & 10
- I Classroom Bldg. 13
- Hobby Building 14
- Segregated Housing 15

U. S. Department of Justice Federal Bureau of Prisons  
\$11,342,000

Alexandria Public Safety Complex  
\$4,000,000

City Court Records Room  
\$12,400

Ft. Polk Firing Ranges  
\$485,677

FCI -Pollock Prison

- Camp Housing Unit
- Existing Warehouse
- New Warehouse

\$11,685,162

Forest Hill Municipal Complex  
\$187,255

Pollock Prison Training Center  
\$468,491



## La Palma Correctional Center | Eloy, Arizona

The 110-acre La Palma Correctional Center includes three separate and semi-independent secure, 1,080-bed compounds, totalling 24 housing and support buildings on the overall site.

The three-compound campus is situated within a secure perimeter with approximately 450,000 square feet of total building space devoted to inmate housing consisting of six 360-bed general population and three 360-bed segregation units. A security patrol road runs along-side perimeter fencing, which is augmented with an intrusion detection system and site lighting.

Inmate housing in each compound is serviced by satellite support buildings that house inmate education and vocational program space, administrative offices, a medical clinic, food service/dining area and a library.

A larger central support building, which serves all three housing compounds, incorporates the central medical, mental health and dental services facility, inmate intake area, master control room, dining facilities and other infrastructure spaces.

All buildings are outfitted with energy-efficient lighting, while high-efficiency rooftop HVAC units further reduce energy consumption. Mechanical and electrical systems are decentralized, CCA's preference, designed to yield lower installation cost, ease of maintenance and operational flexibility.

A gray water system will conserve an estimated 20 gallons of water per inmate per day, which equates to nearly 23 million gallons in annual water savings. Housing units are also outfitted with low-flow showerheads and low-flush toilets to further reduce water consumption.

Campus buildings are finished with a high R-value roofing system, which is designed to reflect sunlight, limit heat transfer and maintain building-interior temperatures. The cool roof system reduces HVAC loads and energy consumption, yielding significant cost savings over the life cycle of the building.

Area: 599,000 SF  
Construction Cost: \$166,000,000  
Construction Start: Oct. 2007  
Construction Completion: Jan. 2009

Owner Information:  
Corrections Corporation of America  
10 Burton Hills Boulevard  
Nashville, TN 37215  
Buddy Johns  
(615) 263-6715





## Hillsborough County Falkenburg Road Jail Expansion | Tampa, Florida

DLR Group was the design criteria architect for the expansion of the Hillsborough County, Falkenburg Road Jail. This expansion consists of 1,536 beds and the infrastructure to support this expansion.

Phases IV and V brought the rated capacity of the Falkenburg Road Jail to 2,304, making this facility the largest direct supervision jail in the United States. As part of our services, DLR Group helped develop the Master plan for this facility, which was planned for a rated capacity of 4,032 beds.

The infrastructure put in place in Phase IV allows for future expansion of the campus to occur in an orderly fashion with one 256 bed-housing unit added at a time, at roughly less than \$13,000 per bed. The infrastructure improvements include storm water management, high voltage emergency and normal electrical; services distribution, sanitary sewer, domestic and fire protection water.

The design of the housing units allows for a single-story (no mezzanine) dormitory with full and clear sightlines throughout. The dormitory is set up as a gender and classification neutral environment. Any given pod can house either males or females, high, medium or low security.

As support components the Falkenburg Road Jail facility has a new Central Laundry and central commissary that is designed to accommodate 6,000 inmates and serve the needs of the Falkenburg, Orient and Morgan Street jails.

This phase of work also included a new Central Clinical area and Infirmary with 100 beds, inclusive of 20 negative pressured medical isolation rooms, and 20 acute care beds.

A new renovation of the Orient Jail food service area, along with a new Seryery at Falkenburg rounds out the needs for the facility. The renovation included the

development of two new tray washing areas, two tray prep areas and a new Central Cook/Chill Kitchen capable of producing more than 600 gallons of food per hour.

Area: 382,000 SF  
Construction Cost: \$35,806,825  
Construction Start: May 2000  
Construction Completion: April 2003

Owner Information:  
Colonel David Parrish  
Director- Hillsborough County  
Corrections  
P.O. Box 3371  
Tampa, Florida 33601  
(813) 247-8310  
(813) 247-8897



## Idaho Correctional Center Prison Industries Building Conversion | Kuna, Idaho

This project consisted of the site development and building design for the conversion of the existing Prison Industries (PI) Building to a 304 bed dormitory style housing unit.

The existing PI building was converted into a dormitory housing unit that created three separate living units, two at 96 beds and one at 112 beds. Each living unit has group toilets/lavatories, showers, two program offices and a multi-purpose room. Program spaces include seven classrooms and a central teacher's office. Support spaces include a satellite medical, satellite serving kitchen, inmate and staff toilets, satellite laundry, staff offices, and a staff training room.

Materials suitable for a minimum security environment were used in order to respect the budget and provide an adequate level of security. The project was unique in that the existing pre-engineered metal building has a rather high ridge line and it was the desire of the design team to keep ceiling height to a minimum level in order to minimize the volume requiring heating and cooling.

Site development included the installation of a separate fenced outdoor recreation yard, a partially covered recreation court and miscellaneous sidewalk and fence modifications.

Area: 43,892 SF  
Construction Cost: \$4,335,250  
Construction Start: Nov. 2008  
Construction Completion: Aug. 2009

Owner Information:  
Corrections Corporation of America  
10 Burton Hills Boulevard  
Nashville, TN 37215  
Tim DeBuse  
(615) 263-3052





## Adams County Correctional Complex | Natchez, Mississippi

This project consists of site development and facility design for a 2,292 bed Medium Security Correctional Facility. The facility design is based on a new CCA Prototype design, which includes three 384-bed dormitory housing units; one 240-bed cell housing unit (expandable to 360-beds); two 360-bed cell housing units; a 180-bed Segregation/180-bed Special Management cell housing unit, and related support space.

The overall building site development is approximately 50 acres, including a 323-car parking lot, perimeter fence and detection system, and security patrol road.

The facility support spaces include Outside Administration, Video Visitation, FBOP/ICE/EOIR offices, Indoor Gymnasium, Contact Visitation Building, Facility Maintenance, Master Control, Inside Administration, Medical, Intake, Laundry, Central Mechanical/Electrical Equipment, Commissary/Central Dining, Warehouse, Inmate Programs Building, and six partial covered outdoor recreation structures.

Area: 408,604 GSF  
Construction Cost: \$108,052,449  
Construction Start: May 2007  
Construction Completion: June 2009

Owner Information:  
Corrections Corporation of America  
10 Burton Hills Boulevard  
Nashville, TN 37215  
Buddy Johns  
(615) 263-6715





## | County Justice Facilities Experience |

Central Arizona Detention Center Expansion - Phases III, IV & V  
Florence, Arizona

Cochise County Jail  
Bisbee, Arizona

Coconino County Juvenile Detention Center  
Flagstaff, Arizona

Florence Detention Center  
Florence, Arizona

Florence Detention Center Expansion  
Florence, Arizona

Gila County Juvenile Detention Facility  
Globe, Arizona

Maricopa County Lower Buckeye Jail  
Phoenix, Arizona

Yuma County Jail Study  
Yuma, Arizona

Yuma County Juvenile Justice Center  
Yuma, Arizona

Orange County South Courts Facility Master Plan/Study  
Laguna Niguel, California

Orange County Sheriff's Training Center  
Tustin, California

Sacramento County Juvenile Courthouse  
Sacramento, California

San Diego Detention Facility Expansion  
San Diego, California

Adams County Sheriff's Substation with Tri-County Health Services  
Commerce City, Colorado

Arapahoe County Jail Warehouse  
Aurora, Colorado

Bent County Correctional Facility Addition  
Las Animas, Colorado

Chino Valley (Boulder County) Jail  
Boulder, Colorado



Costilla County Sheriff's Department and Jail  
San Luis, Colorado

County Sheriffs of Colorado Training Center  
Littleton, Colorado

Crowley County Correctional Facility Expansion  
Olney Springs, Colorado

Custer County Sheriff's Office and Detention Center  
Westcliffe, Colorado

Delta County Criminal Justice Facility  
Delta, Colorado

El Paso County Judicial Building Addition  
Colorado Springs, Colorado

El Paso County Indefinite Delivery  
Colorado Springs, Colorado

Moffat County Public Safety Center  
Craig, Colorado

Yuma County Jail  
Wray, Colorado

Alachua County Courthouse  
Gainesville, Florida

Citrus County Detention Facility Expansion and Courts Addition  
LeCanto, Florida

Citrus County Juvenile Justice Center  
Citrus County, Florida

Gilchrist County Courthouse Addition  
Trenton, Florida

Hardee County Jail  
Wachula, Florida

Hernando County Jail Addition  
Brooksville, Florida

Highlands County Jail & Courthouse  
Master Plan/Study & Renovation/Expansion  
Sebring, Florida

Hillsborough County Falkenburg Jail Expansion - Phases IV & VA  
Tampa, Florida

Jackson County Juvenile Level 10 Facility  
Jackson County, Florida



Manatee County Detention Facility  
Bradenton, Florida

Pinellas County Jail Expansion  
Clearwater, Florida

Putnam County Jail  
Master Plan/Study/Expansion  
Palatka, Florida

St. Lucie County Correctional Facility Expansion  
Fort Pierce, Florida

Cassia County Correctional Facility - Juvenile Facility Addition -  
Feasibility Study  
Burley, Idaho

Twin Falls County Jail Study  
Twin Falls, Idaho

Marion County Jail Annex  
Indianapolis, Indiana

Adams County Jail Expansion  
Corning, Iowa

Boone County Law Enforcement Center  
Boone, Iowa

Buena Vista County Law Enforcement Facility Planning & Design Study  
Storm Lake, Iowa

Cass County Jail Facility  
Atlantic, Iowa

Hardin County Law Enforcement Facility  
Eldora, Iowa

Mills County Law Enforcement Facility Planning and Design Study  
Glenwood, Iowa

O'Brien County Law Enforcement Facility  
Primghar, Iowa

Pottawattamie County Jail  
Council Bluffs, Iowa

Shelby County Jail Addition  
Harlan, Iowa

Woodbury County Boys and Girls Home Planning Study  
Sioux City, Iowa

Woodbury County Law Enforcement Center  
Sioux City, Iowa



Butler County Jail  
El Dorado, Kansas

Crawford County Judicial Center  
Pittsburg, Kansas

Leavenworth Detention Center  
Leavenworth, Kansas

Leavenworth Detention Center Expansions I, II & III  
Leavenworth, Kansas

Campbell County Jail Facility  
Covington, Kentucky

Jackson County Jail Feasibility Study  
Jackson, Michigan

Becker County Security Audit  
Detroit Lakes, Minnesota

Blue Earth County Work Release Facility  
Blue Earth, Minnesota

Clay County Courthouse Addition & Renovation  
Moorhead, Minnesota

Clay County  
Moorhead, Minnesota

- Work Release Facility - Minimum Security
- Emergency Vehicles Garage for Sheriff's Dept.
- Criminal Justice Facilities Needs Assessment Study
- Courthouse Security and Secure Jail Link Study
- Jail Remodeling
- Joint LEC/Police Department Study

Cook County Jail / LEC  
Security Consultant  
Grand Marais, Minnesota

Isanti County Facility Needs Assessment  
Cambridge, Minnesota

Isanti County Jail Annex Phase I  
Cambridge, Minnesota

Jackson County Work Release Dormitory Study  
Jackson, Minnesota

Olmsted County Secure Juvenile Detention Facility  
Rochester, Minnesota

Olmsted County Juvenile Residential Treatment Center  
Rochester, Minnesota



Scott County Courthouse - Courtroom No. 6  
Shakopee, Minnesota

Scott County Jail  
Shakopee, Minnesota

Winona County Regional Jail Feasibility Study  
Winona, Minnesota

Wright County Jail Programming  
Buffalo, Minnesota

Greene County Jail and Expansion Study  
Springfield, Missouri

Lafayette County Jail Feasibility Study  
Lexington, Missouri

St. Louis County Female Detention Addition  
St. Louis, Missouri

Scott County Jail Study  
Benton, Missouri

Cascade County Adult Detention Facility  
Great Falls, Montana

Yellowstone County Detention Center  
Billings, Montana

Dodge County Jail  
Fremont, Nebraska

Douglas County Correctional Center  
Omaha, Nebraska

Douglas County Law Enforcement Center  
Omaha, Nebraska

Hall County Department of Corrections  
Grand Island, Nebraska

Lancaster County Jail  
Lincoln, Nebraska

Saline County Law Enforcement Center  
Wilber, Nebraska

Saline County Law Enforcement Center Expansion  
Wilber, Nebraska

Sarpy County Jail  
Papillion, Nebraska



Humboldt County Detention Facility  
Winnemucca, Nevada

Nye County Criminal Justice Facilities  
Tonopah and Beatty, Nevada

Washoe County Sheriff Space Utilization Study  
Reno, Nevada

Cibola County Corrections Center Addition  
Milan, New Mexico

Otero County Adult Detention Center  
Alamogordo, New Mexico

San Juan County Detention Facility Renovation  
New Mexico

San Juan County Detention Center Annex  
Aztec, New Mexico

Santa Fe County Juvenile Detention Feasibility Study  
Santa Fe, New Mexico

Baker County Work Release Funding Application  
Baker City, Oregon

Jackson County Juvenile Services Center  
Medford, Oregon

Jackson/Josephine County Jail Expansion  
Medford, Oregon

Jefferson County Justice Facility Study  
Madras, Oregon

Josephine County Adult Detention Center  
Planning and Design Study  
Grants Pass, Oregon

Josephine County Juvenile Detention Facility  
Planning and Design Study  
Grants Pass, Oregon

Marion County Correctional Facility  
Salem, Oregon

Marion County Correctional Facility Expansion Study  
Salem, Oregon

Marion County Correctional Facility Expansion - Phase I  
Salem, Oregon

Multnomah County Temporary Booking Facility  
Portland, Oregon



Greenville County Jail Planning Study  
Greenville, South Carolina

Bennet County Courthouse and Jail Facility  
Martin, South Dakota

Buffalo County Maintenance Building Courthouse  
Gann Valley, South Dakota

Kingsbury County Jail Facility  
DeSmet, South Dakota

Minnehaha County Law Enforcement Center  
Planning and Design Study  
Sioux Falls, South Dakota

Minnehaha County Work Release Facility  
Sioux Falls, South Dakota

Mobridge County Jail  
Mobridge, South Dakota

Roberts County Jail Needs Assessment Study  
Sisseton, South Dakota

Spink County Law Enforcement Facility  
Redfield, South Dakota

Cocke County Justice Center  
Newport, Tennessee

Sevier County Justice Center  
Sevierville, Tennessee

Hardeman County Correctional Facility  
Whiteville, Tennessee

San Juan County Jail and Courthouse  
Monticello, Utah

Clallam County Adult Correctional Facility Expansion Study  
Port Angeles, Washington

Clark County Jail Expansion/Joint Law Enforcement Master Plan and  
Minimum Security Facility Siting Study  
Vancouver, Washington

Cowlitz County Law and Justice Facilities Plan  
Kelso, Washington

Cowlitz County Jail Annex  
Kelso, Washington



Grant County Satellite Justice Center  
Ephrata, Washington

King County Space Planning  
Seattle, Washington

Thurston County Corrections Planning  
Olympia, Washington

Walla Walla County Juvenile Services Center  
Walla Walla, Washington

Brown County Jail & Juvenile Detention Facility  
Green Bay, Wisconsin

Columbia County Huber Work Release  
Portage, Wisconsin

Columbia County Jail Expansion  
Portage, Wisconsin

Columbia County Sheriff's Administration Building  
Portage, Wisconsin

Eau Claire County Needs Assessment Study  
Eau Claire, Wisconsin

La Crosse County Law Enforcement Center  
La Crosse, Wisconsin

La Crosse County Huber Work Release Facility  
La Crosse, Wisconsin

Lafayette County Feasibility Study  
Darlington, Wisconsin

Marinette County Facilities Analysis  
Marinette, Wisconsin

Oconto County Jail Additions and Remodeling  
Oconto, Wisconsin

Outagamie County Safety Building  
Appleton, Wisconsin

Outagamie County Safety Building Huber Law Provisions for Women  
Appleton, Wisconsin

Racine County Communications/Security Systems Study  
Racine, Wisconsin

Racine County Jail Control Remodel  
Racine, Wisconsin





Richland County Jail Study  
Richland County, Wisconsin

Sauk County Law Enforcement Center  
Baraboo, Wisconsin

Sawyer County Law Enforcement Center  
Hayward, Wisconsin

Shawano County Courthouse and Jail Addition and Renovation  
Shawano, Wisconsin

Sheboygan County Law Enforcement / Courtroom Study  
Sheboygan, Wisconsin

Waupaca County Jail Remodel & New Courthouse  
Waupaca, Wisconsin

Winnebago County Administrative Building  
Oshkosh, Wisconsin

Winnebago County Huber/Work Release Center  
Oshkosh, Wisconsin

Winnebago County Human Services Center  
Oshkosh, Wisconsin

Wood County Jail  
Grand Rapids, Wisconsin

## | Julien Engineering & Consulting, Inc. |

### Sample of Relative Recent Project Experience

Louis Armstrong New Orleans International Airport Consolidated Rental Car Facility (\$75M)  
(subconsultant to Coover Clark & Associates, Denver CO)

Louis Armstrong New Orleans International Airport Hurricane Katrina Improvements (Various) (\$18M)  
(subconsultant to Manning Architects, Sizeler Thompson Brown Architects, Urban Systems Associates)

City of New Orleans 7th District Police Station Replacement (\$7M)  
(subconsultant to Hegedus Architects)

City of New Orleans 5th District Police Station Replacement (\$7M)  
(subconsultant to Hegedus Architects)

City of New Orleans Fire Stations #33 and #22/39 Replacement (\$8M combined)  
(subconsultant to Trapolin Architects)

Orleans Parish Criminal Sherriff Kitchen/Warehouse Facility (\$70M)  
(subconsultant to Sizeler Thompson Brown Architects)

Orleans Parish Criminal Sherriff Phase II, Templeman 2 and 3 Replacement (\$45M)  
(subconsultant to Sizeler Thompson Brown Architects and Grace & Hebert Architects)

Housing Authority of New Orleans Florida Housing Renovations (\$2M)  
(subconsultant to Perez APC)

Housing Authority of New Orleans Guste Hi-Rise Renovations (\$6M)  
(subconsultant to NY & Assoc)

## | Meyer, Meyer, LaCroix & Hixson, Inc. |

Federal Penitentiary, Oakdale – Design-bid construct project -The 100-acre site of the Federal Detention Center was developed in 1987 to house and process aliens for the Immigration Naturalization Service. The project required the construction of dormitories, administration buildings, food service facilities, maintenance buildings, warehouses and entry buildings.

Federal Prison, Pollock – Design-Build - This project was conducted as a design-build concept. The structural engineering design services were provided in 1999 to accommodate two new buildings, parking and various recreational facilities, drainage design and structural design of buildings and foundations.

Federal Prison, Pollock – Design-Build - The 1999 project was expanded in 2006. The civil and structural engineering design services were provided by MML&H as a sub-consultant. Services rendered included full site development to accommodate an additional housing unit plus a new 56,000 square foot multi-purpose warehouse facility, drainage design and structural design of buildings and foundations.

Haynes Manufacturing Co. Office Building, Lincoln Builders, Arcadia – This design-build project provided a 30, 392 S.F. addition to an existing manufacturing facility. Services included prime A/E design with significant structural engineering of building and machinery foundation systems.

Consolidated Maintenance Facility – LANG at Esler Airport, Pineville (2004-2006) : Complete structural design for a \$15,000,000 maintenance facility for Louisiana Army National Guard. Design of clear span open floor maintenance buildings with rigid frame features, steel bracing, concrete masonry unit walls, overhead bridge cranes and extensive concrete foundations.

Port of Alexandria, Warehouse Storage – (1987-2009) Structural design of various projects. Including the petroleum off-load facility (river structures), steel bulkhead dock, general cargo facility (river structures, 40-ton overhead crane way, warehouse) and bulk fertilizer handling facility (river structures, conveyors, concrete warehouse, and two domes) and an operations center.

Roll Cover Expansion for Voith Paper, Lincoln Builders, Ruston – This 1997 design-bid construct project provided a 49,000 S.F. addition to an existing manufacturing facility designed by MMLH in 1989. Services included prime A/E design with significant structural engineering of building and machinery foundation systems.

Metal Shop Expansion for Voith Paper, Lincoln Builders, Ruston – This 2009 design-bid construct project provided a 15,600 S.F. addition to an existing manufacturing facility design by MMLH in 1989. Services included prime A/E design with significant structural engineering of building and machinery foundation systems.

## | Meyer, Meyer, LaCroix & Hixson, Inc. |

Industrial Zeolite Plant, Meeker – (1999-2001) Fast-Track - : Completed structural and site civil engineering design for a \$15-million structural/civil construction. Provided full A/E prime design services for design of steel-frame structures and concrete foundations throughout the new plant to support all process equipment. Design of control house, boiler house, and filter press buildings including steel superstructures and concrete foundations.

Ambulatory Care Center, Christus St. Frances Cabrini Hospital, Alexandria (1994) – Multi-structural design: This project involved structural design of four story steel frame structure with concrete foundation on deep drilled cassions. The building was designed to provide access to three adjacent buildings at various levels.

## | Professional Engineering Services |

### Client List

Jefferson Parish Facility Services

University of New Orleans

Tulane University

Verges Rome Architects

Pascal Architects, LLC

Southeastern LA University

Gallo Mechanical Contractors

City of New Orleans – Capital Projects

Johnson Controls, Inc.

Gootee Construction, Inc.

MCC Group, LLC

Wayne Troyer Architect

Alciatore Associates Architects

Ritz Carlton Hotels

## | R & N Systems Design, LLC |

Oregon Men's Prison, Madras, Oregon  
Red Rock Correctional Facility, Eloy, Arizona  
Adams County Correctional Facility, Natchez, Mississippi  
Wyoming Medium Correctional Institution, Torrington, Wyoming  
Chillicothe Women's Correctional Facility, Chillicothe, Missouri  
Saguaro Correctional Center, Eloy, Arizona  
Saline County Law Enforcement Center, Wilber, Nebraska  
Desoto County Jail Addition, Hernando, Mississippi  
Kit Carson Correctional Facility, Burlington, Colorado  
Yuma County Juvenile Jail & Courthouse, Yuma, Arizona  
Sauk County Law Enforcement Center, Baraboo, Wisconsin  
Dyer County Law Enforcement Center, Dyersburg, Tennessee  
Washington County Jail, Fayetteville, Arkansas  
Highlands County Courthouse & Jail Expansion, Sebring, Florida  
Leavenworth Detention Center, Leavenworth, Kansas  
San Carlos Apache Detention Facility Adult/Juvenile Detention & Rehab Center, San Carlos, New Mexico  
Johnson County Jail, Mountain City, Tennessee  
Gibson County Jail and Sheriff's Office, Trenton, Tennessee  
Florence Correctional Center, Florence, Arizona  
Columbia County Jail Addition, Portage, Wisconsin  
El Paso County Courthouse, Colorado Springs, Colorado  
Shelby County Jail, Memphis, TN  
New Mexico Penitentiary, Santa Fe, New Mexico  
Nebraska Correctional Facility For Women, York, Nebraska  
Cibola County Jail, Grants, New Mexico  
CNMCF Mental Health Facility, State of New Mexico  
Crowley County Correctional Facility, Housing Exp., Olney Springs, CO  
Marshal County Jail, Lewisburg, Tennessee  
Sandoval County Jail Expansion, Bernalillo, New Mexico  
Houston Processing Center Expansion INS Facility, Houston, Texas  
Lake City Housing Expansion, Lake City, Florida  
Grant County Juvenile Detention Center, Silver City, New Mexico  
Perry County Jail and Sheriff's Office, Linden, Tennessee  
Lafayette Police Facility, Lafayette, Colorado  
White County Correctional Facility, Searcy, Arkansas  
Citrus County Detention Facility Addition, Lecanto, Florida  
Hall County Department of Corrections, Grand Island, Nebraska  
Hickman County Jail, Centerville, Tennessee  
Logan County Jail, Guthrie, Oklahoma  
Roane County Sheriff's Office and Detention Center, Kingston, TN  
Bay County Correctional Facility Addition, Panama City, Florida  
Gadsden County Correctional Center Addition, Quincy, Florida  
Fayette County Criminal Justice Center, Oakland, Tennessee  
Medium Security Facility, Torrington, Wyoming  
Tallahatchie County Correctional Facility, Tutwiler, Mississippi  
Noble County Jail, Perry, Oklahoma  
North Fork Correctional Facility, Sayre, Oklahoma  
Scott County Jail, Waldron, Arkansas  
Robertson County Jail, Springfield, Tennessee  
Scott County Justice Complex, Huntsville, Tennessee  
Bent County Correctional Facility, Las Animas, Colorado  
Tallahatchie County Correctional Facility 2008, Tutwiler, Mississippi  
Trousdale County Correctional Center, Hartsville, Tennessee  
Kenton County Detention Facility, Covington, Kentucky  
Bledsoe County Correctional Complex, Pikeville, Tennessee

## | Cornerstone Detention Products, Inc. |

### Project Experience - Last Five Years

US Federal Penitentiary & Prison Camp, Tucson, AZ  
Dept. Of Justice, Bureau of Prisons  
\$5,681,250  
2005

Mendota FCI, Mendota, CA  
Federal Bureau of Prisons  
\$3,431,800  
2006

Morgan County Jail, Decatur, AL  
Morgan County Commission  
\$4,230,258  
2005

Middle River Regional Jail, Verona, VA  
Middle River Regional Jail Authorities  
\$4,290,679  
2006

Southwest Virginia Regional Jails, Abbingdon, Duffield & Haysi, VA  
SW VA Regional Jail Authority  
\$6,773,175  
2005

CWC Davidson County Metro, Nashville, TN  
General Services Administration  
\$2,127,272  
2005

Cullman County Jail, Cullman, AL  
Cullman County Commission  
\$1,143,353  
2005

Polk County Jail, Des Moines, IA  
Polk County, Iowa  
\$8,294,000  
2008

Washington County Jail, Arkansas, Fayetteville, TN  
Washington County  
\$686,000  
2005

Miami Federal Courthouse, Miami, FL  
General Services Administration  
\$812,000  
2005

Screven County Jail, Sylvania, GA  
Screven County Board of Commissioners  
\$652,340  
2005

## | Cornerstone Detention Products, Inc. |

Beverly Briley Building, Nashville, TN  
Metropolitan Government of Nashville & Davidson County  
\$640,292  
2005

VDOC Greenville/Buckingham Correctional Center, Dillwyn, VA  
Virginia Department of Corrections  
\$885,000.00  
2008

Botetourt-Craig, Fincastle, VA  
Botetourt County, Virginia  
\$1,781,000  
2008

Fayette County Jail, Somerville, TN  
Fayette County TN  
\$988,000  
2008

Pittsburgh Post Office & Federal Courthouse, Pittsburgh, PA  
General Service Administration  
\$442,000  
2006

Wilson County Judicial Facility, TN., Lebanon, TN.  
Wilson County Government  
\$1,807,000  
2008

Gibson County Jail, Trenton, TN  
Gibson County, Tennessee  
\$1,270,000  
2008

Hamilton County Jail, Chattanooga, TN  
Hamilton County Government  
\$446,700  
2006

Buncombe County Jail, Asheville, NC  
Buncombe County, N.C.  
\$2,831,800  
2009

Polk County Jail, Benton, TN  
Polk County Government  
\$963,000  
2007

White County Jail, Searcy, AR  
White County Arkansas  
\$1,099,139  
2006



## | Cornerstone Detention Products, Inc. |

Jefferson County Justice Center, Jefferson County, TN  
Jefferson County Commission  
\$403,000  
2006

Jackson County Jail Renovation, Jackson County, TN  
Jackson County Commission  
\$644,300  
2007

Eastern Shore Regional Jail, Eastville, VA  
County of North Hampton  
\$2,397,254  
2007

Criminal Justice Center, Nashville, TN  
Nashville City/Davidson County Metro Gov.  
\$824,300  
2007

Jefferson County Jail, Pine Bluff, AR  
Jefferson County Arkansas  
\$1,398,000  
2007

Campbell County Jail, Campbell County, TN  
Campbell County Government  
\$517,600  
2007

Franklin County Jail, Russellville, AL  
Franklin County Government  
\$427,000  
2007

Bay County Annex & Courthouse, Panama City, FL  
Bay County  
\$2,496,914  
2008

Rappahannock Regional Jail, Stafford, VA  
Counties of Stafford, Spotsylvania, King George & City of Fredricksburg  
\$1,373,933  
2008

Northern Nevada (NVCC), Carson City, NV  
Nevada State Public Works Board  
\$1,212,000  
2008

Southern Dessert Nevada (SDCC), Indian Springs, NV  
Nevada State Public Works Board  
\$2,333,100  
2008

## | Cornerstone Detention Products, Inc. |

Women's Facility Nevada (SNWCC), North Las Vegas, NV  
Nevada State Public Works Board  
\$1,166,500  
2008

Butler County Prison, Butler, PA  
Butler County Pennsylvania  
\$3,330,000  
2009

SNWCC Nevada, North Las Vegas, NV  
Nevada Department of Corrections  
\$4,800,000  
2009

Morgan County Correctional Facility, Wartburg, TN  
State of Tennessee Department of Corrections  
\$12,875,000  
2008

Wright County Jail, Buffalo, MN  
Wright County  
\$1,106,908  
2008

New River Jail, Dublin, VA  
New River Valley Regional Jail Authority  
\$13,938,349  
75% complete

Western Virginia Regional Jail; Salem, VA  
Western Virginia Regional Jail Authority  
\$5,816,525  
82% complete

Naval Weapons Station, Charleston, SC  
Naval Facilities Eng. Command  
0% complete

Border Patrol Station, Wilcox, AZ  
U.S. Department of Homeland Security  
\$524,888  
99% complete

Huntsville/Madison Jail, Huntsville, AL  
City of Huntsville  
\$2,978,921  
88% complete

Haywood County Justice Complex, Brownsville, TN  
Haywood County Government  
\$507,000  
0% complete

## | Cornerstone Detention Products, Inc. |

Cobb County Jail Wall Panels, Marietta, GA  
Cobb County, GA  
\$9,454,568  
48% complete

Hutchinson, Kansas/D Cellhouse, Hutchinson, KS  
Kansas Department of Administration  
\$739,000  
25% complete

Palm Beach County Jail, Belle Glade, FL  
Board of County Commissioners Palm Beach County, FL  
\$946,600  
0% complete

FCI Aliceville, AL  
Dept. of Justice  
\$5,454,000  
20% complete

## | Simpson Security Systems, Inc. |

### United States Federal Penitentiary, Pollock, LA

Simpson Security Systems, Inc. was responsible for Division 17000. Division 17 included Fire Alarm System, CCTV System, RANS System, Master Antenna Television System, Public Address System, Private Automatic Branch Exchange Telephone System, Door Controls, Three Separate Communication Networks, Facility Wide Fiber Optic Network, facilitation for the Facility Management System, UPS Controls, Inmate Duress System, Dedicated Intercom System, Guard Tower Special Systems, (42) Custom Graphic Display and Controls, Main Control Console all integrated into (1) custom written software utilizing (18) Allen Bradley Programmable Logic Controllers including (1) Redundant and over Fiber Cards. Equipment utilized was Vicon, Allen Bradley, EST, Dukane, Atlas, Blonder Tongue, OCC, TOA, Harris Switch and Bogen. The General Contractor subcontracted the Taut Wire System and Simpson Security coordinated all controls, graphics, RANS and programming.

- November, 2000
- United States Department of Justice  
Federal Bureau of Prisons- Mr. Gary Smith & Marc Dickerson (202) 514-8840
- Buford Goff and Associates-Keith Summers  
Special Systems A/E  
(803) 254-6304
- Caddell Construction Co., Inc.  
1200 Lagoon Parkway  
Montgomery, AL. 87495  
(334) 272-7723 Mr. Jim Weston-Project Superintendent
- Contract Price \$ 4.75 Million (Excluded Taut Wire, Conduit, Wiring)

### United States Penitentiary, Lompoc, CA

To secure and integrate an existing USP via Fiber Optic network and provide and install all new PLC Security Electronics as defined in Division 17. SSS, Inc. installed a new SHU and inmate duress, fire alarm, paging and Intercom with new door controls. Simpson performed renovations to several housing units and guard towers including door controls and inmate duress. Simpson installed a new perimeter fence system and an additional Sally Port for a special R & D separate from the main facility. Connected the system to a new PLC Network and installed two remote I/O's with all new control panels. The institution had to remain secure during the entire process of phasing work and new fence and sally port.

- December 10, 2006
- United States Department of Justice  
Federal Bureau of Prisons-Mr. Darryl Haniline
- Simpson Security Systems, Inc. (Designer)
- Flintco Constructive Solutions, Inc.-Don Hutcherson  
2179 Hillshire Circle  
Memphis, TN. 38133
- Project Cost \$ 2.5 Million

## | Hi-Tech Electric, Inc. |

Broadmoor, LLC  
Stennis Navy Seals Riverine Training Facility  
Stennis, MS  
\$1,027,000

Citadel  
Slidell Memorial Hospital Cancer  
Slidell, LA  
\$1,471,000

C.E.C., Inc.  
South Shore Harbor  
New Orleans, LA  
\$2,620,446

DonahueFavret  
Chalmette Elementary School  
Chalmette, LA  
\$1,375,000

Mauu Construction  
922 Emergency Call Center  
Gretna, LA  
\$3,934,000

City of Kenner Generator Platforms  
City of Kenner  
Kenner, LA  
\$734,500

Port of New Orleans  
Napoleon Avenue Wharf  
New Orleans, LA  
\$569,187

Port of New Orleans  
Wireless Security Generators  
New Orleans, LA  
\$142,720

Lincoln Builders  
Iberia Bank  
Metairie, LA  
\$142,627

## | Gallo Mechanical |

State of Louisiana

The New Orleans Sports Arena

2,000 tons of air conditioning with modifications to existing Superdome Central Plant and 1,000 plumbing fixtures.

\$11,400,000

Lockheed Martin

Lockheed Martin PT&M Center, Stennis Space Center

300,000 sq. ft. air conditioned Assembly Facility, including 2,000 ton Central Plant and Clean Rooms for the Aerospace Industry.

\$9,000,000

Children's Hospital

Children's Hospital ER/OR

Complete renovations of ER/OR facilities including patient isolation rooms, Phoenix air valves, stainless steel exhaust duct, and 1,000 –ton addition to an existing Central Plant

\$3,824,231

US Government

NCCIPS, Phase I and II, Stennis Space Center

3,600 ton Central Plant serving a Tier II computer center with sixty (60) Liebert units.

\$9,908,165

St. Charles Holdings, LLC

Center for Restorative Breast Surgery, Renovation

HVAC, plumbing and med gas for a 36,500 sq. ft. Surgical Center.

\$2,668,995

State of Louisiana

University Hospital, Trauma Center

HVAC, plumbing and med gas for the renovation of 56,300 sq. ft.

Hospital space

\$4,405,799

Naval Facilities Engineering Command

Ocean Science Lab, Stennis Space Center Mississippi

172,000 sq ft office building and lab facility with 520 ton water cooled chillers and VAV HVAC system.

\$4,455,556.00

JP Morgan Chase

JP Morgan Chase Infrastructure Work, Baton Rouge

1,500 ton HVAC replacement of multi-story office building. Work was accomplished without shutting down building systems and building was occupied throughout construction.

\$4,770,744

Weatherford International

Weatherford New Manufacturing Facility

Four Building manufacturing complex totaling over 275,000 sq ft. Main manufacturing building has 1450 tons of air cooled chillers and utilizes Johnson Marcroft air rotational units.

\$6,360,800

## | Gallo Mechanical |

Jacobs Field Services North Am

Shell Motiva Lab

11,500 sq ft petrochemical test laboratory with phoenix air valves, stainless steel exhaust duct, stainless steel lab gas piping, hazardous gas detection system, and 320 tons of DX cooling.

\$4,250,533

State of Louisiana

LA 19th Judicial District Courthouse

300,000 sq. ft. 10-story highrise building in downtown Baton Rouge

\$9,381,070

US Government

Ft. Polk Barracks & Central Plants, Phase 1, II, III

Base wide renovation of four (4) central plants and sixteen (16) barracks.

\$29,792,881

HRI / US Government

Federal City – Marine Forces Reserve

New 400,000 sq ft multiuse facility that will be Headquarter the Marines.

The building will be LEED certified.

\$9,802,348

Orleans Parish Criminal Sheriff's Office

OPCSO – New Kitchen and Warehouse Building

New kitchen and warehouse building for the new OPCSPD detention facility. New plant consists of 6,000 tons.

\$20,500,000

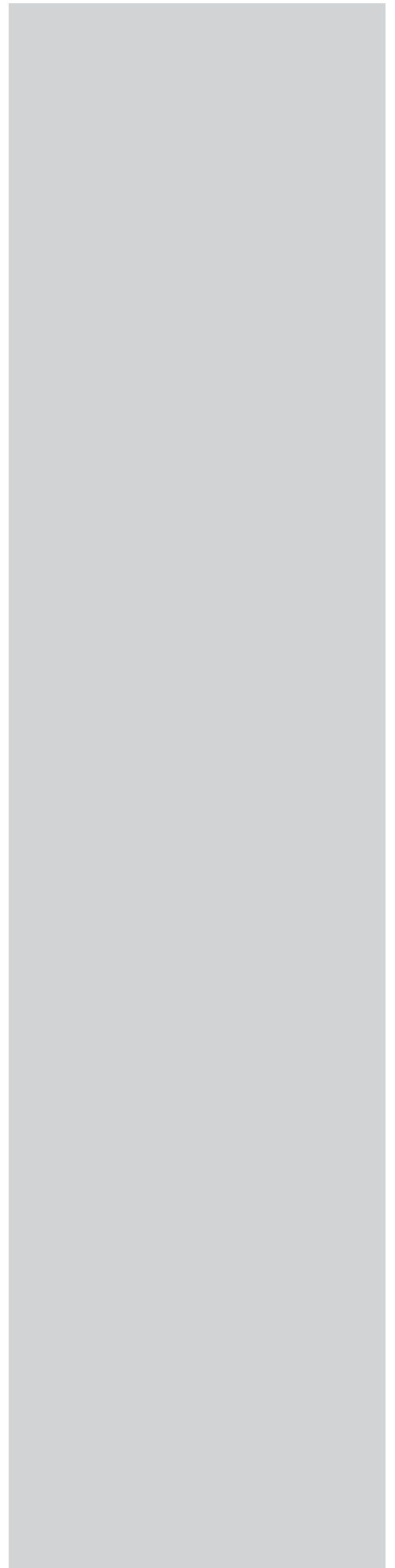
## | Section 9 |

Whether problems as indicated in Subclause 6 above herein resulted in litigation between the public agency and the person performing professional services, particularly if the designer is currently involved in unsolved litigation with a public agency or has been involved in litigation with a public agency where the public agency prevailed.



## | 9. Litigation |

The persons proposed to perform professional design services for your project have never been, nor are currently, involved in any form of litigation with a public agency.



## | Section 10 |

References – past and current client references.

## | 10. References |

We encourage you to contact any and all of the individuals listed below as they will serve as testimony for the level of service the members of our design/build team provide to our clients. For additional information, also see section 8 – Projects.

### The Miques Deloach Company LLC

Federal Bureau of Prisons  
320 First Street Northwest  
Washington, DC 20534  
Contact: Gary Smith, RA  
Project Manager, Design Construction Branch  
(202) 514-8840

Federal Bureau of Prisons  
Constructions Administration Office  
11090 Hwy 14  
Aliceville, AL 35442  
Contact: Dale Inferrera  
Construction Control Representative  
(205) 373-0600 Ext 222

HUB International Gulf South, LTD  
11606 Southfork Drive, Suite 300  
Baton Rouge, LA 70816  
Contact: Cathy Grace  
Bonding Agent for The Hartford  
(225) 218-2455

### DLR Group Architecture & Engineering inc.

Corrections Corporation of America  
10 Burton Hills Boulevard  
Nashville, TN 37215  
Timothy DeBuse, AIA, Managing Director Real Estate Development  
(615) 263-3052

Hall County  
121 South Pine Street  
Grand Island, NE 68801-6099  
Pamela Lancaster, County Supervisor  
(308) 385-5093

Julien Engineering and Consulting, Inc.

City of New Orleans  
1300 Perdido Street  
New Orleans LA 70112  
David Becnel, Director, Capital Projects Administration  
(504) 658-8665  
Robert Mendoza, Director, Department of Public Works  
(504) 658-8000

New Orleans Regional Transit Authority  
2817 Canal Street  
New Orleans, LA 70119  
Donald Hyde, Director  
(504) 343-0157

Meyer, Meyer, LaCroix & Hixon, Inc.

Clint Graham  
Lincoln Builders  
PO Box 400  
Ruston, LA 71273-0400  
(318) 225-3822

Jim Gleason  
Voith Paper Rolls South, Inc.  
West Monroe, LA 72192  
(318) 387-1801

Gallo Mechanical LLC

Broadmoor  
2740 North Arnoult Road  
Metairie, LA 70001  
John Stewart  
504-885-5400

Woodward Design + Build  
1019 S. Dupre Street  
New Orleans, LA 70125  
Dave Yarnick  
504-822-6443

Hi-Tech Electric Inc.

Gene Vivien  
Vivien and Associates  
3313 Houma Blvd.  
Metairie, LA 70003  
(504) 454-3864

Ken McLaughlin  
IMC Consulting Engineers  
3120 20th Street  
Metairie, 70002  
(504) 831-3119

R & N Systems Design, LLC

Mr. Jeff Campbell, Sr. Vice President  
JE Dunn Construction  
1001 Locust Street  
Kansas City, MO 64106  
(816) 426-8900

Mr. Tim DeBuse, AIA, Managing Director  
Real Estate Development  
Corrections Corporation of America  
10 Burton Hill Boulevard  
Nashville, Tennessee 37215  
(615) 263-3052

Cornerstone Detention Products

Sundt  
Phoenix, AZ  
Dan Arana  
(480) 293-3000

Spirit Architecture  
Memphis, Tennessee  
Jim Langford  
(901) 682-5180

Simpson Security Systems, Inc.

Federal Bureau of Prisons  
Oakdale, LA  
Leon Smith  
(318) 215-2803

Federal Bureau of Prisons  
Pollock, LA  
Eric Goodman  
(318) 561-4000

## | Section 11 |

Capacity for timely completion of the work, taking into consideration the person's or firm's current and projected workload and professional and support manpower.

## | 11. Capacity for Timely Completion |

Construction work volume in the State of Louisiana and in the entire region is at the lowest level that it has been in years due to the current economic situation. The expected work load for The Miguez Deloach Company for 2010 is on a pace to be at or just slightly lower than the past 3 year average volume. The downturn in overall construction in the region makes available to us a large number of subcontractors and personnel for the construction of this project who would normally not be available. The slow pace of construction in the region will be a plus for The Miguez Deloach Company as it relates to this project.

The schedule for this project is very aggressive. The Miguez Deloach Company has selected a team of design professionals who have proven track records. Thus we feel that the construction documents will be produced at a pace which will compliment and make this tough schedule possible. Our design team is also well versed in the approach of packaging design documents in a phased approach, in sequence with the critical path of our project schedule. This allows us to begin construction and order long lead time items in advance of having the entire design completed.

All of the design team members are substantial size organizations with significant resources to allocate for your project. This volume will ensure that your project will be staffed appropriately, and in the event of unforeseen events, backup staffing resources can be immediately deployed to provide for uninterrupted service.

We have also placed on our team some of the largest major subcontractors in the New Orleans area. These major subcontractors have in-house design capabilities which will enhance the speed with which the design of the project can proceed. The use of these local major subcontractors will also ensure a large local work force presence on the project. The Miguez Deloach Company anticipates working 6 days a week on the project. We are also prepared to employ shift work if our scheduling indicates that it is necessary.

## | Section 12 |

The nature, quantity, and value of public entity work awarded to both the design and construction components the applicant entity, it being generally desirable to allocate such work among persons who are desirous and qualified to perform such work.



## | 12. Public Work Experience |

The Migue Deloach Company has been in business since April of 2002. To date 65% of our work has consisted of public entity work. The 4 partners in The Migue Deloach Company have a combined 117 years of experience in construction. 65% - 70% of that experience is in public entity work. Our firm is well versed and extremely knowledgeable in what it takes to perform work on the public stage.

Most, if not all, of the subcontractors that we have chosen for our team perform approximately the same percentage of public entity work. The project architect (DLR Group), has a specific focus in the markets of justice facilities and educational projects. Although both of these markets do include some private clients, the majority of our work is for public entities (approximately 70%). DLR Group also provides services for corporate clients, but to a much lesser extent than the work we do in the public sector. The D.E.C. (Cornerstone) and the security contractor (Simpson Security) specialize in prison and jail work so it would be safe to say that almost 100% of their work experience is in public work. Our team can certainly be found to be very experienced in public entity work.

## | Section 13 |

How do you propose to allocate the construction and design components amongst your team.

### | 13. Construction and Design Allocation |

Migues Deloach, our subcontractors and our design consultants will allocate the construction and design components for this project in the most efficient manner, effectuating the best quality, schedule, and budget. DLR Group will be the lead designer and involve and coordinate all the necessary specialized engineers, producing documents for the Owner's approval and construction. Migues Deloach will oversee the constructability, budget estimate, and scheduling issues during the design phase and manage all aspects of the construction. Specialty subcontractors will be involved from the beginning, assisting in the design and following through all the way until commissioning. DLR Group and Migues Deloach will provide quality control inspections throughout the project.

Clear lines of communication is of utmost importance for the success of this type of fast track project. Our Design Build project manager, Wayne Deloach will serve as the single point of contact for all communication between the owner/user group and the design/build team. Our insistence on adherence to this communications policy will ensure that all communication is properly distributed to all affected parties and all necessary records of communication will be kept in a consistent place and format.

## | Section 14 |

The Orleans Parish Criminal Sheriff's Office (OPCSO), requests that the contractors consider utilizing state and local "Disadvantaged Business Enterprise Program Contractors".

## | 14. Disadvantaged Business Enterprise |

Our team will make every effort reasonable to accommodate this request. We intend to incorporate DBE entities on all levels of the project stretching from design professionals to material suppliers. As of this date we have obviously not finalized all sub-contractors or material suppliers, but as an indication of our intent to engage DBE entities in this project we would like to point out the inclusion of Julien Engineering on our team as the civil engineer, as well as the intent of Hi-Tech Electric to purchase materials through a minority owned vendor company. Our intent is to complete the project along this same spirit. We are accustomed to satisfying DBE utilization goals/requirements and strongly believe in the collective gain by embracing such programs. In fact, we don't see this as a burdensome requirement, but rather as a good way of doing business.