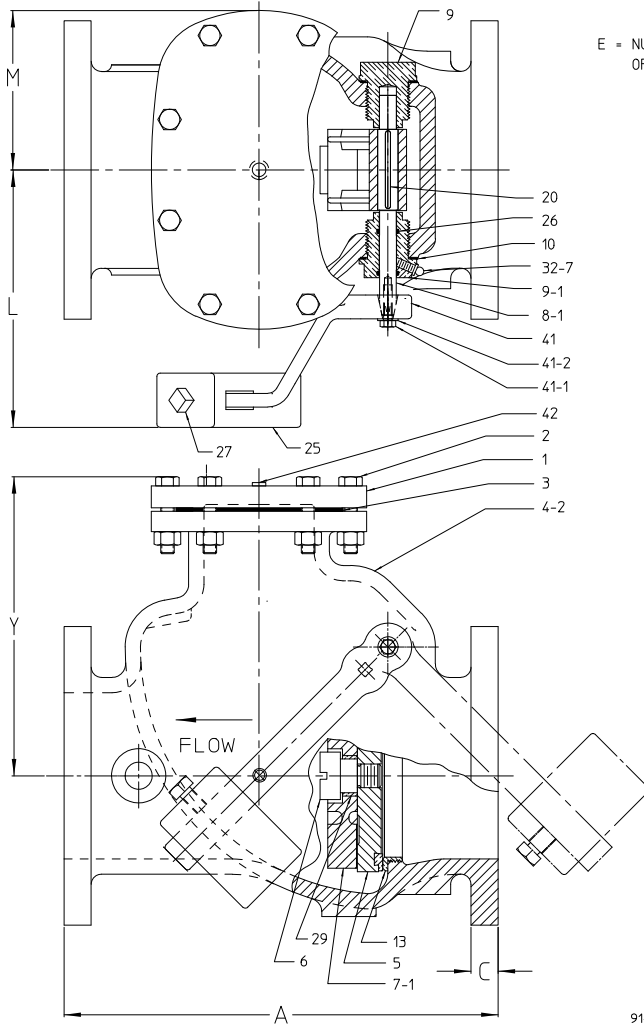
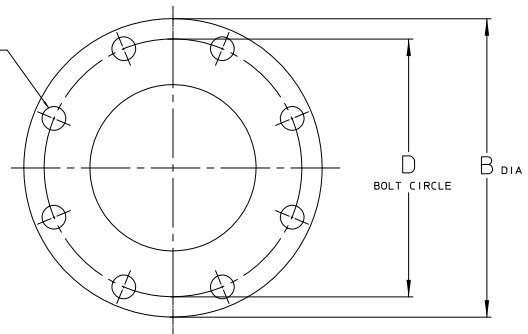


# AMERICAN Flow Control Submittal Information

## 3" - 16" SERIES 52SC LEVER & WEIGHT SWING CHECK VALVE



E = NUMBER & SIZE  
OF BOLT HOLES



| Ref. No. | Description                | Material                              |
|----------|----------------------------|---------------------------------------|
| 1        | Bonnet                     | Gray iron ASTM A126 Class B           |
| 2        | Bonnet Bolts & Nuts        | 0304 Stainless Steel                  |
| 3        | Bonnet Gasket              | Composition Rubber                    |
| 4-2      | Flanged Ends Case          | Gray Iron ASTM A126 Class B           |
| 5        | Disc                       | See Note 5                            |
| 6        | Disc Stud                  | Bronze                                |
| 7-1      | Clapper Arm                | Ductile Iron ASTM A536 Grade 65-45-12 |
| 8-1      | Clapper Arm Shaft Assembly | See Note 6                            |
| 9        | Retainer Plug              | Bronze ASTM B763 UNS C86700           |
| 9-1      | Retainer Plug for Lever    | Bronze ASTM B763 UNS C86700           |
| 10       | Retainer Plug Gasket       | Composition Rubber                    |
| 13       | Seat Ring                  | Bronze ASTM B584 UNS C92200           |
| 20       | Shaft Key                  | Stainless Steel ASTM A582 Type 416    |
| 25       | Weight                     | Gray Iron ASTM A126 Class B           |
| 26       | O-Ring                     | Carboxylated Nitrile                  |
| 27       | Weight Set Screw           | 0304 Stainless Steel                  |
| 29       | Disc Stud Bushing          | Bronze                                |
| 32-7     | Grease Fitting             | Steel                                 |
| 41       | Lever                      | Ductile Iron ASTM A536 Grade 65-45-12 |
| 41-1     | Lever Bolt                 | 0304 Stainless Steel                  |
| 41-2     | Lever Washer               | 0304 Stainless Steel                  |
| 42       | Pipe Plug                  | 0304 Stainless Steel                  |

| Size   | 3        | 4        | 6        | 8        | 10        | 12        | 14        | 16        |
|--------|----------|----------|----------|----------|-----------|-----------|-----------|-----------|
| A      | 11.00    | 13.00    | 16.00    | 19.50    | 24.50     | 27.50     | 31.00     | 36.00     |
| B      | 7.50     | 9.00     | 11.00    | 13.50    | 16.00     | 19.00     | 21.00     | 23.50     |
| C      | 0.75     | 0.94     | 1.00     | 1.13     | 1.19      | 1.25      | 1.38      | 1.44      |
| D      | 6.00     | 7.50     | 9.50     | 11.75    | 14.25     | 17.00     | 18.75     | 21.25     |
| E      | 4 - 0.75 | 8 - 0.75 | 8 - 0.88 | 8 - 0.88 | 12 - 1.00 | 12 - 1.00 | 12 - 1.13 | 16 - 1.13 |
| L      | 5.85     | 6.57     | 9.43     | 10.66    | 12.35     | 13.01     | 15.56     | 16.96     |
| M      | 3.94     | 4.50     | 5.88     | 7.13     | 8.19      | 9.38      | 11.25     | 12.25     |
| Y      | 7.38     | 9.00     | 10.75    | 12.75    | 14.75     | 18.00     | 20.38     | 21.75     |
| Weight | 61 lbs.  | 98 lbs.  | 167 lbs. | 274 lbs. | 445 lbs.  | 620 lbs.  | 1010 lbs. | 1180 lbs. |

### NOTES:

- Construction, materials and testing comply with ANSI/AWWA C508.
- Bolt patterns of class 125 flanged ends are in accordance with ANSI/AWWA C110/A21.10 (ASME B16.1 class 125).
- Valves have manufacturer's name, pressure class and year of manufacture cast on side of case.
- All gray iron is ASTM A126 Class B.
- Disc on 3" is Bronze ASTM B763 UNS C99500. 4" and above are gray iron with bronze face disc. Disc has lug on outside diameter to prevent rotation.
- Clapper arm shaft is stainless steel ASTM A582 Type 416.  
Assembly includes lever, lever bolt, lever washer and shaft key.
- Lever is furnished on side and position shown unless otherwise specified.
- Working pressure - 3" - 12" - 200 psig. - 14" - 16" - 150 psig.
- Series 52-SC valves are available with the interior and exterior of the valve coated with fusion-bonded epoxy in accordance with ANSI/AWWA C550.
- Certified to NSF/ANSI 61 & 372.



**AMERICAN**  
FLOW CONTROL

**THE RIGHT WAY**

AMERICAN Flow Control  
P.O. Box 2727  
Birmingham, Al. 35202-2727  
Phone: 800-326-8051  
Fax: 800-610-3569  
Email: afcsales@american-usa.com

Waterous Company  
125 Hardman Avenue South  
South St. Paul, Mn. 55075-1191  
Phone: 888-266-3686  
Fax: 800-601-2809  
Email: afcsales@american-usa.com

[WWW.AMERICAN-USA.COM](http://WWW.AMERICAN-USA.COM)