



# JEFFERSON PARISH

## DEPARTMENT OF PURCHASING

CYNTHIA LEE SHENG  
PARISH PRESIDENT

RENNY SIMNO  
DIRECTOR

September 2020

### Changes to Jefferson Parish Bidding Information

The Jefferson Parish Purchasing Department would like to make vendors aware of the following changes:

**Total Bid Price Must Include the Cost of Naming Jefferson Parish as Additional Insured:**

Bidder acknowledges that Bidder recovered the cost of any required insurance in the contract price as required by La.R.S. 9:2780.1 and that Bidder recovered any such cost for the purposes of insuring an obligation to indemnify Jefferson Parish, defend Jefferson Parish, or hold Jefferson Parish harmless and that Bidder's indemnity liability is limited to the amount of the proceeds that are payable under the insurance policy or policies that Bidder has obtained.

**Electronic Procurement:** Beginning November 1, 2020, Jefferson Parish will no longer accept manual bid submissions; and will only accept bid submissions electronically via our e-Procurement system, Central Bidding. Central Bidding can be accessed by visiting either [www.centralbidding.com](http://www.centralbidding.com) or [www.jeffparishbids.net](http://www.jeffparishbids.net). All bidders will be required to register with Central Bidding. Jefferson Parish vendors are able to register for free by accessing the following link:  
<https://www.centrauctionhouse.com/registration.php>.

**Probable Construction Cost:** Per Jefferson Parish Administrative Policy, the probable construction cost is not revealed in the Jefferson Parish Bidding Documents. Jefferson Parish Administrative Policy has changed and a range of the probable construction cost will be stated in the Jefferson Parish bidding document, entitled Important Notice to All Bidders – Bid Requirements. Per Louisiana Public Bid Law, the probable construction cost will be read at the bid opening.

**Insurance Requirement:** All bidders must provide proof of valid insurance in the required amounts as stated in the Standard Insurance Requirements for bidding purposes. Failure to provide the proof of valid insurance in all of the required coverage amounts will result in bid rejection.

GENERAL GOVERNMENT BLDG. – 200 DERBIGNY ST., SUITE 4400, GRETNA, LA 70053  
OFFICE 504.364.2678

JOSEPH S. YENNI BLDG. – 1221 ELMWOOD PARK BLVD., SUITE 404, JEFFERSON, LA 70123  
OFFICE 504.364.2678

EMAIL: [PURCHASING@JEFFPARISH.NET](mailto:PURCHASING@JEFFPARISH.NET) WEBSITE: [WWW.JEFFPARISH.NET](http://WWW.JEFFPARISH.NET)

ONE TIME PURCHASE OF A TRUCK MOUNTED COMBINATION JETVACUUM  
FOR JEFFERSON PARISH DEPARTMENT OF DRAINAGE

VEHICLE-EQUIPMENT SPECIFICATIONS

SPECIFICATION NO: 002-2021

**TRUCK MOUNTED COMBINATION JET-VACUUM MACHINE**

The intent of this specification is to define the minimum requirements of the Parish of Jefferson for a vacuum air-conveying sewer cleaner. This unit is designed for and capable of simultaneous high-pressure jetting and vacuuming for the removal of sand, grit, grease, sludge, stones and other materials from sanitary sewers, storm sewers, catch basins, pumping stations, and other facilities. The unit will have a self-contained water supply for use with a high-pressure cleaner for breaking of blockages and removal of material contained therein. The unit will include an air conveying system capable of simultaneous removal of debris flushed to the manhole by the sewer cleaner system, or debris removal from catch basins, sumps, digesters, wet wells, etc. using the single chassis engine as the power source. The vacuum system will include a sealed body for storage and removal of the collected debris. The unit will be designed for ease of maintenance and be operational by one man and all controls will be located at an operator's station in front of the truck for convenience and safety. The combination machine will comply with all federal, state and local laws binding upon this type of equipment.

**TRUCK CAB & CHASSIS**

State:

Chassis Make:

Chassis Model:

GW1R: 60,000 lbs., minimum.

Wheelbase: 230 In., maximum.

Front axle shall be 20,000 lbs. minimum, Set Back Axle.

Rear axle shall be 40,000 lbs. Minimum with heavy-duty tandem axle housings and a ratio of 5.86.

Front & Rear oil seals shall be provided.

Front & Rear dust shields shall be provided

**Suspension**

Front suspension shall be 20,000 lbs. Minimum, flat leaf style.

Front shock absorbers shall be supplied.

Rear suspension shall be 40,000 lbs. Minimum with multi-leaf springs and 54" axle spacing.

**Brake System - ABS**

To ensure brake system performance, safety and service life of chassis, a 4 Wheel, ABS brake system will be supplied.

Front & rear service brakes shall be Q+ cast spider cam, double anchor, fabricated shoes.

Low air warning light and buzzer shall be supplied.

To provide clean, dry air to the chassis brake system, a brake line air dryer with shield, heater and integral reservoir will be provided.

An 18.7 CFM air compressor shall be supplied.

#### Steering

Complete power steering system, including pump, fluid reservoir and oil/air power steering cooler shall be provided.

The following gauges and controls shall be furnished:

- Oil pressure gauge
- Engine coolant temperature gauge
- Tachometer
- Odometer/trip/hour meter/voltage/diagnostic display
- Speedometer
- Primary and secondary air pressure gauges
- Transmission oil temperature gauge
- Fuel gauge with DEF gauge
- Key operated ignition switch

#### Engine

Engine shall be a four-cycle diesel, turbo-charged and after-cooled.

Engine shall be rated at 370 HP @200 RPM, 2100 GOV RPM.

Engine shall have a torque rating of 1250 LB/FT. @ 1,400 RPM.

Engine shall be water cooled with antifreeze protection to -34 degrees Fahrenheit.

Engine shall have vertical muffler and exhaust pipe (11' 6-) height and be equipped with a Diesel Particulate Filter & SCR system for 2008 EPA emission requirements.

Integral electronic protection shutdown system for low oil pressure and high water temperature shall be included.

#### Transmission

Transmission shall be an Automatic with PTO provision and water to oil cooler.

Transmission shall come installed with synthetic transmission fluid.

#### Engine Equipment

The tz-volt alternator shall have a minimum of 160-amp output rating.

Two (2) batteries shall be maintenance free and rated at 2,250 eCA with a master battery disconnect.

Air intake will be captured through the side of the hood with and directed to a firewall-mounted gir cleaner.

An on/off clutch engine fan shall be supplied with automatic controls.

A full flow/bypass oil filter shall be supplied.



**Wheels & Tires**

Front wheel rims shall be 5-hand steel disc type 22.5 X 12.25.

Rear wheel rims shall be 2-hand steel disc type 22.5 X 8.25.

Front tires: radial tires; type 425/65R22.5-20 ply rated.

Rear tires: radial tires; type MIS 11R22.5-14 ply rated.

**Warranty**

The basic truck chassis & drive train shall be warranted by the manufacturer for two (2) years, unlimited miles, unless otherwise specified.

**COMBINATION JETNACUUM BODY**

**DEBRIS BODY**

A dual radius designed vessel using high strength ASTM A572 grade 50 steel, 1/4" upper and lower radius section, 1/4" sidewalls, front bulkhead and 3/8" rear bulkhead shall be provided.

A rear door constructed of 1/2" high strength steel ASTM A572 grade 50 steel shall be provided.

The debris body shall have a volumetric capacity of 8 cubic yards, minimum.

The rear door shall hydraulically lock/unlock, raise and lower using one hydraulic cylinder to perform the function. The cylinder shall be equipped with a check valve for safety.

Tailgate locking wedges shall have a reverse bevel to maintain a mechanical lock if hydraulic pressure should be lost for any reason.

A replaceable, reversible neoprene seal shall be supplied for the tailgate.

Dumping and door controls will be located forward of the debris body on the driver's side for safety, so operator does not have to cross in front or behind vehicle at dumpsite and so driver will not be subject to debris from dumping.

An external, grease able, float type debris level indicator with a stainless-steel ball shall be provided.

Debris inlet tube shall enter at top, front of tank and continue into tank and extend 3/4 of the specified tank length. Airflow shall then exit at the front of tank for best possible material separation

Debris shall hit bolted on deflector plate at top of tank rather than rear bulkhead (door) to prevent premature wear.



A float type automatic vacuum shutdown system with a stainless-steel ball, housed in a carbon steel cage shall be provided. Systems requiring switches to accomplish this are unacceptable.

Body door hinges and pins shall be bolted to enable shim adjustment with grease fittings. Lock receivers shall also be shimmed for adjustment as seal wears.

Tailgate will hydraulically open, close & lock.

A decant system will be provided consisting of a 6" butterfly valve mounted at the lowest point of the rear door and 20' x 6" of lay flat hose with rack.

Decant port to include a port plumbed with an Yz" quick coupler and shutoff valve to aid in port clean out via the wash-down hose should the decant port become clogged.

Internal carbon steel standpipes, 6" x 24" with strainers on top, shall be supplied; one for decant and one for the sludge pump (two total).

The debris tank shall also be equipped with 4" sludge system capable of pumping 710 GPM @ 10' head while vacuuming if needed or independently. A 3" ball valve and male cam lock will be provided on outlet. System shall include a 4" valve on sludge pump inlet, to be brass slam type.

A 3" decant line plumbed to the front of the unit with ball valve at front bumper shall be supplied. Ball valve shall be equipped with male cam lock and include a jumper hose at rear with cam locks to hook pump to decant line at rear.

A safety body prop shall be supplied to secure the body during repairs. It shall be remotely operated so that the operator does not have to get under the debris tank while engaging the prop.

An external rear door safety prop shall be provided as a secondary device to hold the door open for cleaning of debris body or inspection.

The debris body will be equipped with a full flow internal tank flusher system consisting of a minimum of seven (7) stainless steel nozzles mounted in a flush bar at the front bottom bulkhead of the debris body and sized to utilize the full capacity of the primary water pump to clean the debris body. Manifold shall be external and shall not encroach on inside of debris body.

A high-pressure ball valve will be installed at the high-pressure manifold to control water to the tank flush and plumbed from manifold to tank flush.

A bolt-on carbon steel splash shield around sides and bottom of tailgate shall be supplied.

The debris body and water tanks shall be affixed on an independent frame, separate from the chassis and power frame.

Debris tank shall be mounted via a 3-point mounting system to allow flexing.

A manifold with all lube points plumbed so tailgate can be greased from ground shall be supplied.

Ground level lube provision for float level indicator shall be supplied.

#### HOIST

The hoist cylinder shall be a single post type with NTEA performance range. Double-acting cylinder pins must be removable with retaining bolts. It shall provide a minimum lifting capacity of 56,000 lbs. and a minimum dump angle of 50 degrees. The hoist cylinder shall have safety check valves to prevent collapse from hydraulic failure.

#### WATER TANKS

Dual water tanks shall have a combined capacity of 1000 U. S. gallons, minimum, and shall be internally baffled for safety.

Tanks shall be constructed of aluminum or stainless steel only. The shell and baffles shall be  $\frac{1}{8}$ " thick, minimum, and the end plates shall be at least  $\frac{1}{4}$ " thick.

Each tank will be equipped with 2" ball valve low point drains, internal baffles and a six (6) inch crossover tube between tanks for quick and level filling.

Water tanks will not rise with the debris body while dumping.

Water-tanks will not share a common wall with debris tank and will be easily removed in the event of replacement or repair.

Tanks will be located above chassis frame rails to provide a flooded inlet to the water pump and protection from road damage and off-road uses and for ease of service to drive line components.

Unit will have an anti-siphon device with 4" air gap and fill hose storage rack. Water fill connection will be on passenger side and requires a 2" W strainer.

Unit shall have an electronic water level indicator located at front operator control panel. A water level sight tube located on the passenger-side water tank shall also be included.

Water tanks shall have a lifetime warranty against rust, cracking, material and workmanship.

#### HIGH PRESSURE WATER SYSTEM

Water pump will produce 80 GPM @ 2,500 PSI, minimum.

Pump will be a triplex, plunger-style. Smooth-flow design. Pumps that require accumulators are unacceptable.

Starting from high-pressure side of water pump, 1" 1.0. Plumbing will be used up to hose reel, including water manifold, control valve and swivels.

Swivel must be designed so it can be tightened as it wears and be rebuilt.

The water pump shall be driven from chassis engine via transmission, heavy-duty OMSI transfer case and hydrostatic drive. Driving the pump off of the front of the chassis engine crankshaft is unacceptable.

Water pump speed shall be fully adjustable without changing the engine RPM. Controls for starting and stopping the water pump and varying the flow and pressure shall be at the control panel. An integral oil to water heat exchanger with a 143,000 BTU per hour rating shall be included.

Water pump shall run independently from vacuum pump.

Will be equipped with full flow adjustable pressure regulator and include a strainer on the water pump inlet.

Pump shall be equipped with drain valve on the low-pressure side at the bottom, center of the pump. Water pump and vacuum system shall be able to simultaneously operate in continuous duty at maximum water pressure and flow while achieving maximum vacuum.

Pressure and flow controls shall be located at the operator's station.

Water pump shall be in a position so it has a positive feed from the water tanks at all times, regardless of the water tank level. Pump shall be located so a mechanic does not have to remove pump from truck to repair when necessary and there shall be no obstructions in front of pump for ease of access.



The entire high-pressure water system shall have an air purge system to dewater all plumbing for winterization. The air shall be supplied by chassis air system that is isolated by a high-pressured ball valve and check valve.

Unit will have a spring retractable handgun hose reel with 50' of 1 1/2" hose.

A hydro excavator package shall be included and will be frame mounted. It shall operate off of the main water pump rated at 15-20gpm @ 2000 psi. Water pump will be hydrostatically driven with an on/off control. It shall include an auto-rewinding spring-loaded hose reel with 50' of 1 1/2" hose and a Single pistol-grip style handgun w/ lance and nozzle rated for system performance.

#### VACUUM SYSTEM

The blower shall be an 8X24.

The vacuum system shall be provided by a positive displacement, rotary lobe-type blower capable of 4000 CFM inlet volume and maximum 18" Hg.

The blower shall have a load rating of 8X24 4000CFM@18" Hg (245 H2O) 204HP@2470RPM.

It shall have dual vacuum relief valves with one set at 17.5" Hg and one set at 18" Hg.

The vacuum system shall have an air operated 4" vacuum relief valve to vent ambient air to the blower intake in order to relieve vacuum in the body and suction tubes/hoses and will be controlled at control panel and on remote pendant.

A means of starting, stopping and varying the vacuum suction from the operator's station shall be provided.

The blower shall be driven from chassis engine via transmission and heavy duty OMS I transfer case and direct drive via drive shaft.

The transfer case will have a driver's side, remote mounted fill port and sight glass.

The cyclone separator shall be built out of high strength ASTM A572 grade 50 steel, capable of separating material down to 50 micron particles or coarser from air stream. The cyclone shall taper down to a dropout box with a clean out hatch, Dropout box shall have a two (2) inch drain with ball valve mounted at bottom of box.

A stainless-steel removable strainer basket shall be installed before blower inlet.

Unit shall have non-skid steps with handgrips allowing safe passage from ground level to a work platform at top of unit.

The blower shall contain a high efficiency exhaust silencer with an aluminum rain cap. It will have a built-in tube rack that will hold four (4) 8" diameter suction tubes for a total of 24' of tubes with positive lock tube retainer in lieu of bungee straps.

Unit shall also include an additional rear door tube rack that holds (two) tubes, with positive lock tube retainer system in lieu of bungee straps.

#### BOOM

Boom shall be designed for front-end operation with 8" ID pick-up hose mounted and stored at front bumper. Need or use of support rod for boom storage is unacceptable.

Hydraulically powered up/down, left/right, and in/out shall be accomplished with a single joystick.

Unit will be equipped with a true tube in a tube boom telescoping section with a travel of eight (8) feet



six (6) inches.

Boom shall have a coverage area of 550 square feet. **Submit diagram.**

Boom will have a lifting capacity of 1000 lbs. with dual hydraulic, lift cylinders. It will have a lifting capacity of 550lbs, minimum, when boom is fully extended.

A boom-lifting eye shall be incorporated at the lower rigid tube to support lifting attachments.

Boom shall swing 90 degrees to each side of the truck via a hydraulic driven worm gear. A cylinder rotated boom is unacceptable.

Boom rotation and extension shall be grease able remotely from ground level.

Boom shall remain stationary and not rise with debris body.

All connections between debris body and vacuum system will be self-aligning.

Boom with steel elbow must be able to extend and retract without affecting the length of the pickup hose. Rubber hose in place of steel elbow is unacceptable.

Extra heavy-duty boom elbow shall have a preformed C channel welded to the outside radius of the elbow.

A remote manifold with all lube points plumbed so the boom can be greased from ground level shall be supplied.

#### **ELECTRICAL SYSTEM**

The entire electrical system shall be sealed to IP66 ratings that exceed NEMA four standards.

#### **REEL AND OPERATOR STATION**

The front mounted reel shall have the ability to articulate 230 degrees across the front of the unit, with a capacity of 800 feet of 1" hose. The operator will easily be able to rotate and lock the reel at any angle desired within the rotation.

The hose reel will be hydraulically powered in both directions by a hydraulic motor coupled to a planetary gearbox. Chain and sprockets are unacceptable due to excessive wear and maintenance.

All operations shall be routed through a Can-Bus control system.

Hose reel control valve shall have a speed control device to regulate the rotational speed of the reel in both directions.

Hose reel will rotate on a turntable slewing bearing with a friction brake that can be applied in any rotated position. Gears mounted on hose reel bearing are not acceptable due to missed positions when teeth and pawl do not line up.

Hose reel brake band must be adjustable with turnbuckle and be applied by an air cylinder.

Hose reel must be mounted in the center of the chassis frame rails and not rotate out of centerline of frame rails into traffic for safety. The need for / use of an outrigger leg for support is unacceptable.

The hose reel shall tilt forward for access to the truck engine via a hydraulic cylinder powered by an

electric power pack. Electric power pack shall run independently from main system. Power pack shall operate whether truck engine is running or not.

Unit shall have a manual dual roller telescoping level wind on hose reel.

Hose reel control panel will be easily removable and able to be mounted to either side of the reel, giving the operator the ability to always be positioned away from traffic or any other safety hazard.

Hose reel control panel shall have a remote shift (hot shift) for transfer case to engage and disengage the blower from the hose reel control panel. Safety switches shall be installed on the transfer case.

A digital footage counter on center shaft of reel will be installed.

#### **CONTROLS and GAUGES**

Chassis Engine Tachometer/Hour Meter on LCD Display  
Vacuum Gauge on Color LCD Display  
Water Pressure Gauge on LCD Display  
Water Pump Hour Meter on LCD Display  
Vacuum Pump Hour Meter on LCD Display  
Hydraulic Pressure Gauge  
Truck Engine Throttle - Electrically Controlled  
Water Pump Engage/Hydraulic Flow Control  
Blower Engage/Disengage  
Electric Throttle Safety Return to Idle Switch  
Reel Tilt  
On/Off Water Pressure Valve  
Hose Reel Direction and Speed Control  
Single Boom Control Joystick to Control All Boom Functions  
Single Reel Control Joystick for Direction and Speed Control  
Remote Pendant Push Button Control  
Hose Reel Articulation Brake Valve

Vacuum Relief  
Boom Work Lights  
Low Water Warning Light and Alarm  
High Debris Level Indicator Hooked to Warning Light and Vacuum Relief

#### HYDRAULIC SYSTEM

Pump shall be transfer case-mounted piston pump with test ports for troubleshooting and shall produce 18 GPM at 2000 PSI, 1800 RPM, minimum.

The hydraulic reservoir shall be a modular component with a minimum of 40 gallons capacity and will have a level sight-eye and temperature gauge. Ten (10) micron filters shall be installed on both the suction and return lines and shutoff valves shall be installed on suction lines.

Unit shall be equipped with emergency 12-volt dc electric hydraulic power pack to bypass system so boom, body and hose reel can be moved in the event of engine or hydraulic failure. Manual hand pump systems are not acceptable.

#### LIGHTING

A handheld spotlight with 20' chord and retractable reel shall be located at front bumper.  
LED D.O.T. Lighting includes stop, tail, turn and backup lights.  
Boom will be equipped with two work lights.  
Rear mounted 360-degree, super LED strobe light.  
Side mirror mounted LED Strobe lights - one on left side. One on right side.  
Rear mounted traffic advisor-bar type LED

#### TOOLBOX~ENCLOSURES

Unit shall have one lockable steel toolbox, 18"x18"x36" on passenger side.  
Unit shall have one lockable steel toolbox, 18"x18"x36" on driver side.  
Unit shall have one, closet-style. Behind-cab tool cabinet on each side, for long-handled tool storage.  
Unit shall have one traffic cone holder.

#### REQUIRED ACCESSORIES

Unit will be supplied with 24 feet of 8' aluminum tubing. Including a catch basin tip.  
600 feet of 1" x 2500-PSI sewer hose will be installed on the reel.  
10' x 1" Leader hose shall be installed to end of the sewer hose.  
Clear Lexan type protective shield shall be installed on the hose reel.  
One-inch radial, dual degree nozzle  
One-inch rotating head, grease & root cutting nozzle with viscous-fluid optimized speed control  
Manhole bottom hose guide - tiger tail  
25' x 2-1/2" Fill hose  
Hydrant wrench  
Manhole hook  
Emergency road kit triangles & 5 lbs fire extinguisher  
Camera System - two channel 7" color monitor with backup and front facing cameras  
Electric backup alarm  
Lube chart  
Fenders with mud flaps  
Front & rear tow hooks  
One set of Operation & Maintenance manuals  
One set of chassis Parts and Service manuals



MOUNTING

The unit will be factory mounted on the specified chassis and will not exceed a height of twelve (12) feet. No part of the unit will extend beyond specified height while traveling.

TRAINING

Product training will be provided upon delivery of new unit. The purpose shall be to train operating and maintenance personnel on proper O & M procedures.

Paint

The unit will be powder coated singular color to match the owner's color specification.

**WARRANTY:**

MANUALS: (2) PARTS, (2) SERVICE MANUALS, (2) WIRING DIAGRAMS IF  
MANUFACTURER STILL PROVIDES. IF NO MANUALS, CD'S WILL  
BE  
ACCEPTED.

SAFETY: MUST MEET OR EXCEED FEDERAL AND STATE SAFETY  
STANDARDS.

LOUISIANA STATE DEALER'S LICENSE IS REQUIRED, IN ACCORDANCE WITH  
LA RS 32:1254 ET SEQ. VENDOR MUST PROVIDE A LOUISIANA DEALER'S  
LICENSE WITH THEIR BID.

DATE: 2/24/2021  
BID NO.: 50-00133612

INVITATION TO BID  
THIS IS NOT AN ORDER

Page: 1

**JEFFERSON PARISH**

PURCHASING DEPARTMENT  
P.O. BOX 9  
GRETNA, LA. 70054-0009  
504-364-2678

BUYER: DNELSON@jeffparish.net

BIDS WILL BE RECEIVED ONLINE VIA [WWW.JEFFPARISHBIDS.NET](http://WWW.JEFFPARISHBIDS.NET) UNTIL 2:00 PM, 3/16/2021 AND PUBLICLY OPENED THEREAFTER IN THE WEST BANK PURCHASING DEPT, SUITE 4400, JEFFERSON PARISH GENERAL GOVERNMENT BUILDING, 200 DERBIGNY STREET, GRETNA, LA 70053 AND VIA TELECONFERENCE (DIAL-IN AT (504) 323-1800, MEETING ID: 181357) At no charge, bidders are to submit via Jefferson Parish's electronic procurement page by visiting [www.jeffparishbids.net](http://www.jeffparishbids.net) to register for this free site. Additional instructions are included in the text box highlighting electronic procurement.

LATE BIDS WILL NOT BE ACCEPTED

NOTE: ONLY BIDS WRITTEN IN INK OR TYPEWRITTEN, AND PROPERLY SIGNED BY A MEMBER OF THE FIRM OR AUTHORIZED REPRESENTATIVE, WILL BE ACCEPTED. PENCIL AND/OR PHOTOSTATIC FIGURES OR SIGNATURES SHALL RESULT IN BID REJECTION. HOWEVER, ELECTRONIC SIGNATURES AS DEFINED IN LSA - R.S. 9:2620(8) ARE ACCEPTABLE. SIGNATURE MUST BE A SECURED DIGITAL SIGNATURE.

**INSTRUCTIONS FOR BIDDERS AND GENERAL CONDITIONS**

**THE FOLLOWING INSTRUCTIONS APPLY TO ALL BIDS**

All bids submitted are subject to these instructions and general conditions and any special conditions and specifications contained herein, all of which are made part of this bid proposal reference. By submitting a bid, vendor agrees to comply with all provisions of Louisiana Law as well be in compliance with the Jefferson Parish Code of Ordinances, Louisiana Code of Ethics, applicable Jefferson Parish ethical standards and Jefferson Parish Resolution No. 113646 and/or Resolution No. 113647 as amended.

Jefferson Parish adheres to the Louisiana Code of Governmental Ethics, contained in Louisiana Revised Statutes Annotated, R.S. 42:1101, et seq. Vendor/Proposer by this submission, warrants that there are no "conflicts of interest" related to this procurement that would violate applicable Louisiana Law. Violation of the Louisiana Code of Governmental Ethics may result in rescission of contract, permit or licenses, and the imposition of fines and/or penalties, without contractual liability to the public in accordance with applicable law.

All vendors submitting bids should register as a Jefferson Parish vendor if not already yet registered. Registration forms may be downloaded from <http://purchasing.jeffparish.net> and by clicking on Vendor Information. Current W-9 forms with respective Tax Identification numbers and vendor applications may be submitted at any time; however, if your company is not registered and/or a current W-9 form is not on file, vendor registration is mandatory. Vendors may experience a delay in payment if your company is not a registered vendor with Jefferson Parish.

All quotations shall be based on F.O.B. Agency warehouse or job site, anywhere within the Parish as designated by the Purchasing Department. This provision does not apply to public works projects

JEFFERSON PARISH requires all products to be new (current) and all work must be performed according to standard practices for the project. Unless otherwise specified, no aftermarket parts will be accepted. Unless otherwise specified, all workmanship and materials must have at least one (1) year guaranty, in writing, from the date of delivery and/or acceptance of the project. Any deviations or alterations from the specifications must be indicated and/or supporting documentation supplied with bid submission.

Bidders should submit all questions in writing via email to the buyer's email address as indicated above, no later than Five (5) working days prior to the bid opening. Bid numbers should be mentioned in all requests. If submitting online, vendors may send questions via the E-Procurement site no later than Five (5) working days prior to the bid opening.

If this bid requires a pre-bid conference (see Additional Requirements section), bidders are advised that such conference will be held to allow bidders the opportunity to identify any discrepancies in the bid specifications and seek further clarification regarding instructions. The Purchasing Department will issue a written response to bidders' questions in the form of an Addendum. Please note that all official communication will be expressed in the form of an addendum.

Visit our website at [HTTP://PURCHASING.JEFFPARISH.NET](http://PURCHASING.JEFFPARISH.NET)

BID NO.: 50-00133612

All formal Addenda require written acknowledgement on the bid form by the bidder. Failure to acknowledge an Addendum on the bid form shall cause the bid to be rejected. JEFFERSON PARISH reserves the right to award bid to next lowest responsive and responsible bidder in this event.

JEFFERSON PARISH will accept one price for each item unless otherwise indicated. Two or more prices for one item will result in bid rejection. Bidders are required to complete, sign and return the bid form and/or complete and return the associated line item pricing forms as indicated. Vendors must not alter the bid forms. Doing so will cause the bid to be rejected.

A corporate resolution or written evidence of the individual signing the bid having such authority must be submitted with the bid. Failure to comply will cause bid to be rejected. For corporate entities, such written evidence may be a printout of the Louisiana Secretary of State's website listing the signatory as an officer. Such printout shall be included with the bid submission. Bids submitted by Owners or Sole Proprietorships must include certification that he or she owns the entity for which the bid is signed. This documentation must be submitted with the bid. Failure to do so will result in bid rejection.

NOTE: A sample corporate resolution can be downloaded from our website <http://purchasing.jeffparish.net> or you may provide your own document. A sample certification of sole proprietorship can also be downloaded from our website <http://purchasing.jeffparish.net> or you may provide your own document.

### INSTRUCTIONS FOR BIDDERS AND GENERAL CONDITIONS

**A. AWARD OF CONTRACT:** JEFFERSON PARISH reserves the right to award contracts or place orders on a lump sum or individual item basis, or such combination, as shall in its judgment be in the best interest of JEFFERSON PARISH. Every contract or order shall be awarded to the LOWEST RESPONSIVE and RESPONSIBLE BIDDER, taking into consideration the CONFORMITY WITH THE SPECIFICATIONS and the DELIVERY AND/OR COMPLETION DATE. SPLIT AWARDS MADE TO SEVERAL VENDORS WILL ONLY BE GRANTED TO THOSE DEEMED RESPONSIVE AND RESPONSIBLE.

All bid prices shall remain valid for 45 days. Jefferson Parish and the lowest responsive and responsible bidder(s) by mutual written consent may mutually agree to extend the deadline for award by one (1) or more extensions of thirty (30) calendar days.

**PROTESTS:** Only those vendors that submit bids in response to this solicitation may protest any element of the procurement, in writing to the Director of the Purchasing Department. Written protest must be received within 48 hours of the release of the bid tabulation by the Purchasing Department. After consultation, the Parish Attorney's Office will then respond to protests in writing. (For more information, please see Chapter 2, Article VII, Division 2, Sec. 2-914.1 of the Jefferson Parish Code of Ordinances.)

**PREFERENCE:** Unless federal funding is directly spent by Jefferson Parish for this purchase, preference is hereby given to materials, supplies, and provisions produced, manufactured or grown in Louisiana, quality being equal to articles offered by competitors outside the state. "LSA - R.S. 38:2251-2261"

**B. USE OF BRAND NAMES AND STOCK NUMBERS:** Where brand names and stock numbers are specified, it is for the purpose of establishing certain minimum standards of quality. Bids may be submitted for products of equal quality, provided brand names and stock numbers are specified. Complete product data may be required prior to award.

**C. CANCELLATION OF CONTRACT:** JEFFERSON PARISH reserves the right to cancel all or any part if not shipped promptly. No charges will be allowed for parking or cartage unless specified in quotation. The order must not be filled at a higher price than quoted. JEFFERSON PARISH reserves the right to cancel any contract at anytime and for any reason by issuing a THIRTY (30) day written notice to the contractor.

For good cause and as consideration for executing a contract with Jefferson Parish, vendor conveys, sells, assigns and transfers to Jefferson Parish or its assigns all rights, title and interest in and to all causes of action it may now or hereafter acquire under the antitrust laws of the United States and the State of Louisiana, relating to the particular good or services purchased or acquired by Jefferson Parish.

**D. PRICES:** Jefferson Parish is exempt from paying sales tax under LSA-R.S. 47:301 (8)(c). All prices for purchases by Jefferson Parish of supplies and materials shall be quoted in the unit of measure specified and unless otherwise specified, shall be exclusive of state and local taxes. The price quoted for work shall be stated in figures. In the event there is a difference in unit prices and totals, the unit price shall prevail.

Quantities listed are for bidding purposes only. Actual requirements may be more or less than quantities listed.

Bidders are not to exclude from participation in, deny the benefits of, or subject to discrimination under any program or activity, any person in the United States on the grounds of race, color, national origin, or sex; nor discriminate on the basis of age under the Age Discrimination Act of 1975, or with respect to an otherwise qualified handicapped individual as provided in Section 504 of the Rehabilitation Act of 1973, or on the basis of religion, except that any exemption from such prohibition against discrimination on the basis of religion as provided in the Civil Rights Act of 1964, or Title VI and VII of the Act of April 11, 1968, shall also apply. This assurance includes compliance with the administrative requirements of the Revenue Sharing final handicapped discrimination provisions contained in Section 51.55 (c), (d), (e), and (k)(5) of the Regulations. New construction or renovation projects must comply with Section 504 of the 1973 Rehabilitation Act, as amended, in accordance with the American National Standard Institute's specifications (ANSI A17.1-1961).



DATE: 2/24/2021

BID NO.: 50-00133612

## INSTRUCTIONS FOR BIDDERS AND GENERAL CONDITIONS

Page: 3

Jefferson Parish and its partners as the recipients of federal funds are fully committed to awarding a contract(s) to firm(s) that will provide high quality services and that are dedicated to diversity and to containing costs. Thus, Jefferson Parish strongly encourages the involvement of minority and/or woman-owned business enterprises (DBE's, including MBE's, WBE's and SBE's) to stimulate participation in procurement and assistance programs.

The purpose and intention of this invitation to bid is to afford all suppliers an equal opportunity to bid on all construction, maintenance, repair, operating supplies and/or equipment listed in this bid proposal. JEFFERSON PARISH WILL ACCEPT ONE BID ONLY FROM EACH VENDOR. Items bid must meet specifications.

Advertised bids will be tabulated and a copy of the tabulation will be forwarded to each responding bidder.

### IN ACCORDANCE WITH STATE REGULATIONS JEFFERSON PARISH OFFERS ELECTRONIC PROCUREMENT TO ALL VENDORS

This electronic procurement system allows vendors the convenience of reviewing and submitting bids online.

This is a secure site and authorized personnel have limited read access only. Bidders are to submit electronically using this free service; while the website accepts various file types, one single PDF file containing all appropriate and required bid documents is preferred. Bidders submitting uploaded images of bid responses are solely responsible for clarity. If uploaded images/documents are not legible, then bidder's submission will be rejected. Please note all requirements contained in this bid package for electronic bid submission.

Please visit our E-Procurement Page at [www.jeffparishbids.net](http://www.jeffparishbids.net) to register and view Jefferson Parish solicitations. For more information, please visit the Purchasing Department page at <http://purchasing.jeffparish.net>.

The general specifications for construction projects and the purchase of materials, services and/or supplies are those adopted by the JEFFERSON PARISH Council by Resolution No. 113646 or 113647 as amended. The general conditions adopted by this resolution shall be considered as much a part of this document as if they were written wholly herein. A copy may be obtained from the Office of the Parish Clerk, Suite 6700, Jefferson Parish General Government Building, 200 Derbigny Street, Gretna, LA 70053. You may also obtain a copy by visiting the Purchasing Department webpage at <http://purchasing.jeffparish.net> and clicking on Online Forms.

### ADDITIONAL REQUIREMENTS FOR THIS BID

PLEASE MATCH THE NUMBERS PRINTED IN THIS BOX WITH THE CORRESPONDING INSTRUCTIONS BELOW.

13, 15

1. All bidders must attend the MANDATORY pre-bid conference and will be required to sign in and out as evidence of attendance. In accordance with LSA R.S. 38:2212(I), all prospective bidders shall be present at the beginning of the MANDATORY pre-bid conference and shall remain in attendance for the duration of the conference. Any prospective bidder who fails to attend the conference or remain for the duration shall be prohibited from submitting a bid for the project.
2. Attendance to this pre-bid conference is optional. However, failure to attend the pre-bid conference shall not relieve the bidder of responsibility for information discussed at the conference. Furthermore, failure to attend the pre-bid conference and inspection does not relieve the successful bidder from the necessity of furnishing materials or performing any work that may be required to complete the work in accordance with the specification with no additional cost to the owner.
3. Contractor must hold current applicable JEFFERSON PARISH licenses with the Department of Inspection and Code Enforcement. Contractor shall obtain any and all permits required by the JEFFERSON PARISH Department of Inspection and Code Enforcement. The contractor shall be responsible for the payment of these permits. All permits must be obtained prior to the start of the project. Contractor must also hold any and all applicable Federal and State licenses. Contractor shall be responsible for the payment of these permits and shall obtain them prior to the start of the project.



### INSTRUCTIONS FOR BIDDERS AND GENERAL CONDITIONS

4. A LA State Contractor's License will be required in accordance with LSA R.S. 37-2150 et. seq. and such license number will be shown on the outside of the bid electronic envelope. Failure to comply will cause the bid to be rejected. When submitting the bid electronically, the license number must be entered in the appropriate field in the electronic procurement system. Failure to comply will cause the bid to be rejected.
5. It is the bidder's responsibility to visit the job site and evaluate the job before submitting a bid.
6. Job site must be clean and free of all litter and debris daily and upon completion of the contract. Passageways must be kept clean and free of material, equipment, and debris at all times. Flammable material must be removed from the job site daily because storage will not be permitted on the premises. Precaution must be exercised at all times to safeguard the welfare of JEFFERSON PARISH and the general public.
7. PUBLIC WORKS BIDS: All awards for public works in excess of \$5,000.00 will be reduced to a formal contract which shall be recorded at the contractor's expense with the Clerk of Court and Ex-Officio Recorder of Mortgages for the Parish of Jefferson. A price list of recordation costs may be obtained from the Clerk of Court and Ex-Officio Recorder of Mortgages for the Parish of Jefferson. All awards in excess of \$25,000.00 will require both a performance and a payment bond. Unless otherwise stated in the bid specifications, the performance bond requirements shall be 100% of the contract price. Unless otherwise state in the bid specifications, the payment bond requirements shall be 100% of the contract price. Both bonds shall be supplied at the signing of the contract.
8. NON-PUBLIC WORKS BIDS: A performance bond will be required for this bid. The amount of the bond will be 100% of the contract price unless otherwise indicated in the specifications. The performance bond shall be supplied at the signing of the contract.
9. NON-PUBLIC WORKS BIDS: A payment bond will be required for this bid. The amount of the bond will be 100% of the contract price unless otherwise indicated in the specifications. The payment bond shall be supplied at the signing of the contract.
10. All bidders must comply with the requirements stated in the attached "Standard Insurance Requirements" sheet attached to this bid solicitation. Failure to comply with this instruction will result in bid rejection.
11. A bid bond will be required with bid submission in the amount of 5% of the total bid, unless otherwise stated in the bid specifications. All sureties must be in original format (no copies) When submitting a bid online, vendors must submit an electronic bid bond through the respective online clearinghouse bond management system(s) as indicated in the electronic bid solicitation on Central Auction House. No scanned paper copies of any bid bond will be accepted as part of the electronic bid submission.
12. This is a requirements contract to be provided on an as needed basis. JEFFERSON PARISH makes no representations on warranties with regard to minimum guaranteed quantities unless otherwise stated in the bid specifications.
13. Freight charges should be included in total cost when quoting. If not quoted FOB DELIVERED, freight must be quoted as a separate item. Bid may be rejected if not quoted FOB DELIVERED or if freight charges are not indicated on bid form.
14. PUBLIC WORKS BIDS - Completed, Signed and Properly Notarized Affidavits Required; This applies to all solicitations for construction, alteration or demolition of public buildings or projects, in conformity with the provisions contained in LSA-RS 38:2212.9, LSA-RS 38:2212.10, LSA-RS 38:2224, and Sec 2-923.1 of the Jefferson Parish Code of Ordinances. For bidding purposes, all bidders must submit with bid submission COMPLETED, SIGNED and PROPERLY NOTARIZED Affidavits, including: Non-Conviction Affidavit, Non-Collusion Affidavit, Campaign Contribution Affidavit, Debt Disclosures Affidavit and E-Verify Affidavit. For the convenience of vendors, all affidavits have been combined into one form entitled PUBLIC WORKS BID AFFIDAVIT. This affidavit must be submitted in its original format, and without material alteration, in order to be compliant and for the bid to be considered responsive. A scanned copy of the completed, signed and properly notarized affidavit may be submitted with the bid, however, the successful bidder must submit the original affidavit in its original format and without material alteration upon contract execution. Failure to comply will result in the bid submission being rejected as non-responsive. The Parish reserves the right to award bid to the next lowest responsive and responsible bidder in this event.

## INSTRUCTIONS FOR BIDDERS AND GENERAL CONDITIONS

15. NON PUBLIC WORK BIDS - Completed, Signed and Properly Notarized Affidavits Required in conformity with the provisions contained in LSA – RS 38:2224 and Sec 2-923.1 of the Jefferson Parish Code of Ordinances. For bidding purposes, all bidders must submit with bid submission COMPLETED, SIGNED and PROPERLY NOTARIZED Affidavits, including: Non-Collusion Affidavit, Debt Disclosures Affidavit and Campaign Contribution Affidavit. For the convenience of vendors, all affidavits have been combined into one form entitled NON PUBLIC WORKS BID AFFIDAVIT. This affidavit must be submitted in its original format, and without material alteration, in order to be compliant and for the bid to be considered responsive. A scanned copy of the completed, signed and properly notarized affidavit may be submitted with the bid, however, the successful bidder must submit the original affidavit in its original format and without material alteration upon contract execution. Failure to comply will result in the bid submission being rejected as non-responsive. The Parish reserves the right to award bid to the next lowest responsive and responsible bidder in this event.

16. The ensuing contract for this bid solicitation may be eligible for FEMA reimbursement and/or Federal funding/reimbursement. As such, the referenced appendix will be applicable accordingly and shall be considered a part of the bid documents. All applicable certifications must be duly completed, signed and submitted with bid submission. Failure to submit applicable certifications with bid submission will result in bid rejection.

17. For this project, the Contractor shall not pay any state or local sales or use taxes on materials and equipment which are affixed and made part of the immovable property of the project or which is permanently incorporated in the project (hereinafter referred to as "applicable materials and equipment"). All purchases of applicable materials or equipment shall be made by the contractor on behalf of and as the agent of Jefferson Parish (Owner), a political subdivision of the State of Louisiana. No state and local sales and use taxes are owed on applicable materials and equipment under the provisions of Act 1029 of the 1991 Regular Session - Louisiana Revised Statute 47:301(8)(c). Owner will furnish to contractor a certificate form which certifies that Owner is not required to pay such state or local sales and use taxes, and contractor shall furnish a copy of such certificate to all vendors or suppliers of the applicable materials and equipment, and report to Owner the amount of taxes not incurred.

It shall be the duty of every parish officer, employee, department, agency, special district, board, and commission; and the duty of every contractor, subcontractor, and licensee of the parish, and the duty of every applicant for certification of eligibility for a parish contract or program, to cooperate with the Inspector General in any investigation, audit, inspection, performance review, or hearing pursuant to JPCO 2-155.10(19). By signing this document, every corporation, partnership, or person contracting with PARISH, whether by cooperative endeavor, intergovernmental agreement, bid, proposal, application or solicitation for a parish contract, and every application for certification of eligibility for a parish contract or program, attests that it understands and will abide by all provisions of JPCO 2-155.10.



DATE: 2/24/2021

Page: 6

BID NO.: 50-00133612

**BID FORM**  
Non Public Works

All Public Work Projects are required to use the Louisiana Uniform Public Work Bid Form

All prices must be held firm unless an escalation provision is requested in this bid. Jefferson Parish will allow one escalation during the term of the contract, which may not exceed the U.S. Bureau of Labor Statistics National Index for all Urban Consumers, unadjusted 12 month figure. The most recently published figure issued at the time an adjustment is requested will be used. A request must be made in writing by the vendor, and the escalation will only be applied to purchases made after the request is made.

Are you requesting an escalation provision?

YES X NO \_\_\_\_\_MAXIMUM ESCALATION PERCENTAGE REQUESTED 3 %INITIAL BID PRICES WILL REMAIN FIRM THROUGH THE DATE OF 12/31/2021

For the purposes of comparison of bids when an escalation provision is requested, Jefferson Parish will apply the maximum escalation percentage quoted by the bidder to the period to which it is applied in the bid. The initial price and the escalation will be used to calculate the total bid price. It will be assumed, for comparison of prices only, that an equal amount of material or labor is purchased each month throughout the entire contract.

**DELIVERY: FOB JEFFERSON PARISH**

INDICATE DELIVERY DATE ON EQUIPMENT AND SUPPLIES

180 Days, A.R.O.  
N/A

LOUISIANA CONTRACTOR'S LICENSE NO.: (if applicable)

N/A**THIS SECTION MUST BE COMPLETED BY BIDDER:**FIRM NAME: Vacuum Truck Sales & Service, L.L.C.ADDRESS: 9236 Ashland RoadCITY, STATE: Gonzales, LA ZIP: 70737TELEPHONE: (225) 744-2850 FAX: (225) 744-2852EMAIL ADDRESS: dtaylor@vtsales.net

In the event that addenda are issued with this bid, bidders MUST acknowledge all addenda on the bid form. Bidder must acknowledge receipt of an addendum on the bid form by placing the addendum number as indicated. Failure to acknowledge any addendum on the bid form will result in bid rejection.

Acknowledge Receipt of Addenda: NUMBER: \_\_\_\_\_

NUMBER: \_\_\_\_\_

NUMBER: \_\_\_\_\_

NUMBER: \_\_\_\_\_

TOTAL PRICE OF ALL BID ITEMS: \$ 380,000.00AUTHORIZED SIGNATURE: Davis TaylorDavis Taylor  
Printed NameTITLE: Equipment Sales / Territory Manager

SIGNING INDICATES YOU HAVE READ AND COMPLY WITH THE INSTRUCTIONS AND CONDITIONS.

NOTE: All bids should be returned with the BID NUMBER and BID OPENING DATE indicated on the outside of the envelope submitted to the Purchasing Department.

## INVITATION TO BID FROM JEFFERSON PARISH - continued

BID NO.: 50-00133612

SEALED BID

ITEM NUMBER	QUANTITY	U/M	DESCRIPTION OF ARTICLES	UNIT PRICE QUOTED	TOTALS
1	1.00	EA	<p>ONE-TIME PURCHASE OF A TRUCK MOUNTED COMBINATION JETVACUUM MACHINE FOR JEFFERSON PARISH DEPARTMENT OF PUBLIC WORKS, DRAINAGE</p> <p>0001 - 2021 VacAll Model AJV-810 Combination units mounted on a 2021 Freightliner Chassis Model 108SD with setback front axle. Unit is to match or exceed the specifications (attached).</p> <p><u>Bidded unit is a 2021 Vacall</u></p> <p><u>model AJV-810 mounted on</u></p> <p><u>a 2021 Freightliner model 108SD.</u></p> <p><u>All pricing is F.O.B.</u></p> <p><u>Jefferson Parish, LA.</u></p>	<p><u>\$380,000.00</u></p>	<p><u>\$380,000.00</u></p>

## COMPANY RESOLUTION

EXCERPT FROM MINUTES OF MEETING OF THE MEMBERS OF  
VACUUM TRUCK SALES & SERVICE, LLC.

AT THE MEETING OF MEMBERS OF VACUUM TRUCK SALES &  
SERVICE, LLC, DULY NOTICED AND HELD ON MARCH 8, 2021, A  
QUORUM BEING THERE PRESENT, ON MOTION DULY MADE  
AND SECONDED. IT WAS:

RESOLVED THAT DAVIS TAYLOR, BE AND IS HEREBY  
APPOINTED, CONSTITUTED AND DESIGNATED AS AGENT  
AND ATTORNEY-IN- FACT OF THE COMPANY WITH FULL  
POWER AND AUTHORITY TO ACT ON BEHALF OF THIS  
COMPANY IN ALL NEGOTIATIONS, BIDDING, CONCERNS AND  
TRANSACTIONS WITH THE PARISH OF JEFFERSON OR ANY OF  
ITS AGENCIES, DEPARTMENTS, EMPLOYEES OR AGENTS,  
INCLUDING BUT NOT LIMITED TO, THE EXECUTION OF ALL  
BIDS, PAPERS, DOCUMENTS, AFFIDAVITS, BONDS, SURETIES,  
CONTRACTS AND ACTS AND TO RECEIVE ALL PURCHASE  
ORDERS AND NOTICES ISSUED PURSUANT TO THE  
PROVISIONS OF ANY SUCH BID OR CONTRACT, THIS  
COMPANY HEREBY RATIFYING, APPROVING, CONFIRMING,  
AND ACCEPTING EACH AND EVERY SUCH ACT PERFORMED  
BY SAID AGENT AND ATTORNEY-IN- FACT.

I HEREBY CERTIFY THE FOREGOING TO BE  
A TRUE AND CORRECT COPY OF AN  
EXCERPT OF THE MINUTES OF THE ABOVE  
DATED MEETING OF THE MEMBERS OF SAID  
COMPANY, AND THE SAME HAS NOT BEEN  
REVOKED OR RESCINDED.

  
\_\_\_\_\_  
AUTHORIZED MEMBER

3/8/2021  
\_\_\_\_\_  
DATE



## **Non-Public Works Bid Affidavit Instructions**

- Affidavit is supplied as a courtesy to Affiants, but it is the responsibility of the affiant to insure the affidavit they submit to Jefferson Parish complies, in both form and content, with federal, state and parish laws.
- Affidavit must be signed by an authorized representative of the entity or the affidavit will not be accepted.
- Affidavit must be notarized or the affidavit will not be accepted.
- Notary must sign name, print name, and include bar/notary number, or the affidavit will not be accepted.
- Affiant **MUST** select either A or B when required or the affidavit will not be accepted.
- Affiants who select choice A must include an attachment or the affidavit will not be accepted.
- If both choice A and B are selected, the affidavit will not be accepted.
- Affidavit marked N/A will not be accepted.
- It is the responsibility of the Affiant to submit a new affidavit if any additional campaign contributions are made after the affidavit is executed but prior to the time the council acts on the matter.

*Instruction sheet may be omitted when submitting the affidavit*



Non-Public Works Bid

AFFIDAVIT

STATE OF Mississippi

PARISH/COUNTY OF Rankin

BEFORE ME, the undersigned authority, personally came and appeared: Davis Taylor, (Affiant) who after being by me duly sworn, deposed and said that he/she is the fully authorized Agent of Vacuum Truck Sales Service, LLC (Entity), the party who submitted a bid in response to Bid Number 50-00133612, to the Parish of Jefferson.

Affiant further said:

Campaign Contribution Disclosures

(Choose A or B, if option A is indicated please include the required attachment):

Choice A \_\_\_\_\_ Attached hereto is a list of all campaign contributions, including the date and amount of each contribution, made to current or former elected officials of the Parish of Jefferson by Entity, Affiant, and/or officers, directors and owners, including employees, owning 25% or more of the Entity during the two-year period immediately preceding the date of this affidavit or the current term of the elected official, whichever is greater. Further, Entity, Affiant, and/or Entity Owners have not made any contributions to or in support of current or former members of the Jefferson Parish Council or the Jefferson Parish President through or in the name of another person or legal entity, either directly or indirectly.

Choice B X there are NO campaign contributions made which would require disclosure under Choice A of this section.

Debt Disclosures

(Choose A or B, if option A is indicated please include the required attachment):

Choice A \_\_\_\_\_ Attached hereto is a list of all debts owed by the affiant to any elected or appointed official of the Parish of Jefferson, and any and all debts owed by any elected or appointed official of the Parish to the Affiant.

Choice B X There are NO debts which would require disclosure under Choice A of this section.

Affiant further said:

That Affiant has employed no person, corporation, firm, association, or other organization, either directly or indirectly, to secure the public contract under which he received payment, other than persons regularly employed by the Affiant whose services in connection with the construction, alteration or demolition of the public building or project or in securing the public contract were in the regular course of their duties for Affiant; and

*[The remainder of this page is intentionally left blank.]*

That no part of the contract price received by Affiant was paid or will be paid to any person, corporation, firm, association, or other organization for soliciting the contract, other than the payment of their normal compensation to persons regularly employed by the Affiant whose services in connection with the construction, alteration or demolition of the public building or project were in the regular course of their duties for Affiant.

Davis Taylor  
Signature of Affiant

Davis Taylor  
Printed Name of Affiant

SWORN AND SUBSCRIBED TO BEFORE ME  
ON THE 11th DAY OF March, 2021.

Sw  
Notary Public

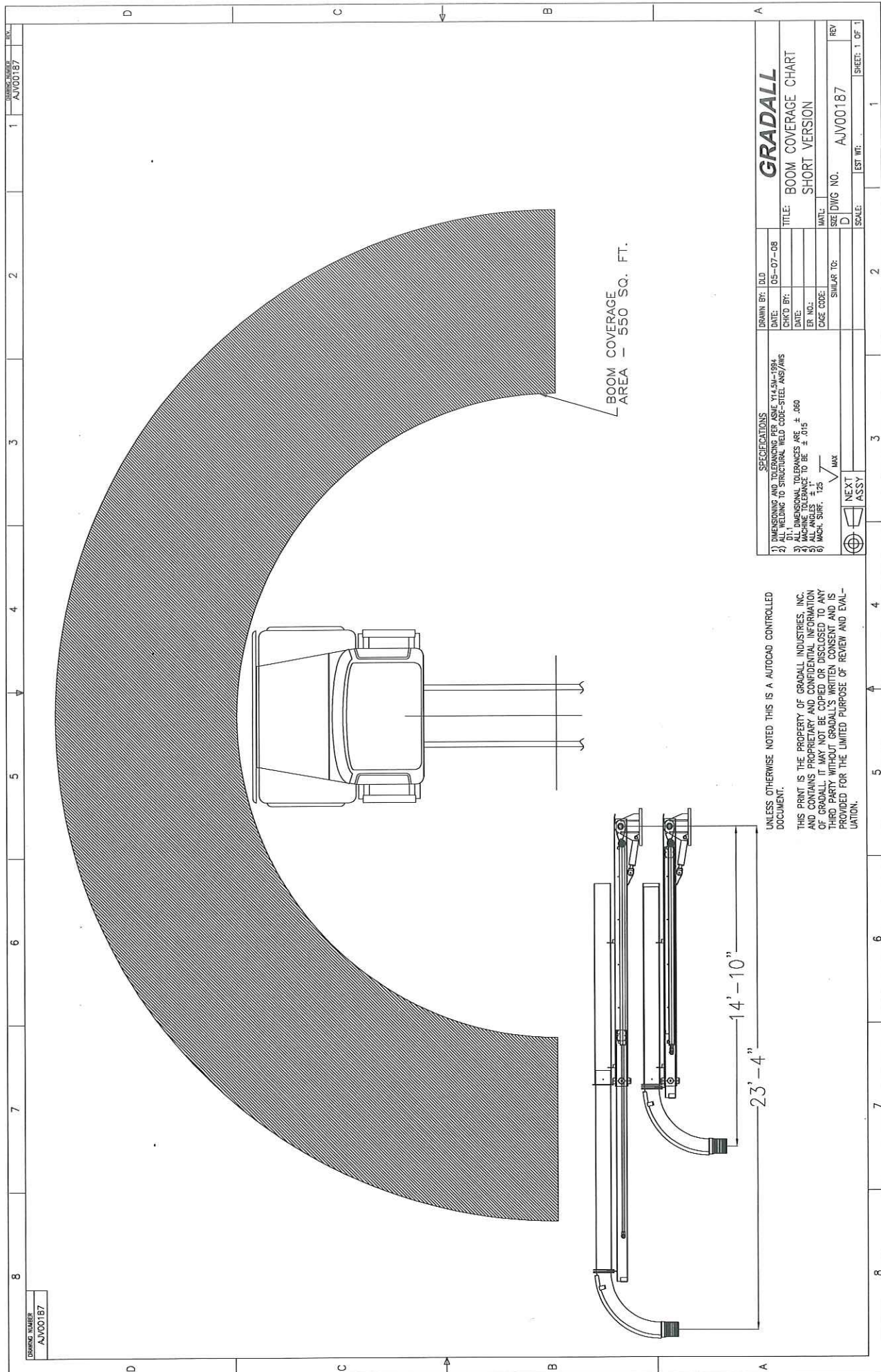
Stephanie D. Marshall  
Printed Name of Notary

23292  
Notary/Bar Roll Number

My commission expires 01/08/2025







DRAWING NUMBER: AJV00187

1 2 3 4 5 6 7 8

D C B A

1 2 3 4 5 6 7 8

D C B A

BOOM COVERAGE  
AREA - 550 SQ. FT.

SPECIFICATIONS		DRAWN BY: DLD	DATE: 05-07-08		GRADALL	
1) DIMENSIONS TO CENTER OF GRAVITY	W/SH-1084	DATE:	05-07-08		TITLE: BOOM COVERAGE CHART	
2) ALL WELDING TO STRUCTURAL WELD CODE-STEEL AWS/AWS		CHK'D BY:			SHORT VERSION	
3) DIMENSIONS TO CENTER OF GRAVITY	W/SH-1084	DATE:				
4) DIMENSIONS TO CENTER OF GRAVITY	W/SH-1084	DATE:				
5) DIMENSIONS TO CENTER OF GRAVITY	W/SH-1084	DATE:				
6) DIMENSIONS TO CENTER OF GRAVITY	W/SH-1084	DATE:				
7) DIMENSIONS TO CENTER OF GRAVITY	W/SH-1084	DATE:				
8) DIMENSIONS TO CENTER OF GRAVITY	W/SH-1084	DATE:				
9) DIMENSIONS TO CENTER OF GRAVITY	W/SH-1084	DATE:				
10) DIMENSIONS TO CENTER OF GRAVITY	W/SH-1084	DATE:				
11) DIMENSIONS TO CENTER OF GRAVITY	W/SH-1084	DATE:				
12) DIMENSIONS TO CENTER OF GRAVITY	W/SH-1084	DATE:				
13) DIMENSIONS TO CENTER OF GRAVITY	W/SH-1084	DATE:				
14) DIMENSIONS TO CENTER OF GRAVITY	W/SH-1084	DATE:				
15) DIMENSIONS TO CENTER OF GRAVITY	W/SH-1084	DATE:				
16) DIMENSIONS TO CENTER OF GRAVITY	W/SH-1084	DATE:				
17) DIMENSIONS TO CENTER OF GRAVITY	W/SH-1084	DATE:				
18) DIMENSIONS TO CENTER OF GRAVITY	W/SH-1084	DATE:				
19) DIMENSIONS TO CENTER OF GRAVITY	W/SH-1084	DATE:				
20) DIMENSIONS TO CENTER OF GRAVITY	W/SH-1084	DATE:				
21) DIMENSIONS TO CENTER OF GRAVITY	W/SH-1084	DATE:				
22) DIMENSIONS TO CENTER OF GRAVITY	W/SH-1084	DATE:				
23) DIMENSIONS TO CENTER OF GRAVITY	W/SH-1084	DATE:				
24) DIMENSIONS TO CENTER OF GRAVITY	W/SH-1084	DATE:				
25) DIMENSIONS TO CENTER OF GRAVITY	W/SH-1084	DATE:				
26) DIMENSIONS TO CENTER OF GRAVITY	W/SH-1084	DATE:				
27) DIMENSIONS TO CENTER OF GRAVITY	W/SH-1084	DATE:				
28) DIMENSIONS TO CENTER OF GRAVITY	W/SH-1084	DATE:				
29) DIMENSIONS TO CENTER OF GRAVITY	W/SH-1084	DATE:				
30) DIMENSIONS TO CENTER OF GRAVITY	W/SH-1084	DATE:				
31) DIMENSIONS TO CENTER OF GRAVITY	W/SH-1084	DATE:				
32) DIMENSIONS TO CENTER OF GRAVITY	W/SH-1084	DATE:				
33) DIMENSIONS TO CENTER OF GRAVITY	W/SH-1084	DATE:				
34) DIMENSIONS TO CENTER OF GRAVITY	W/SH-1084	DATE:				
35) DIMENSIONS TO CENTER OF GRAVITY	W/SH-1084	DATE:				
36) DIMENSIONS TO CENTER OF GRAVITY	W/SH-1084	DATE:				
37) DIMENSIONS TO CENTER OF GRAVITY	W/SH-1084	DATE:				
38) DIMENSIONS TO CENTER OF GRAVITY	W/SH-1084	DATE:				
39) DIMENSIONS TO CENTER OF GRAVITY	W/SH-1084	DATE:				
40) DIMENSIONS TO CENTER OF GRAVITY	W/SH-1084	DATE:				
41) DIMENSIONS TO CENTER OF GRAVITY	W/SH-1084	DATE:				
42) DIMENSIONS TO CENTER OF GRAVITY	W/SH-1084	DATE:				
43) DIMENSIONS TO CENTER OF GRAVITY	W/SH-1084	DATE:				
44) DIMENSIONS TO CENTER OF GRAVITY	W/SH-1084	DATE:				
45) DIMENSIONS TO CENTER OF GRAVITY	W/SH-1084	DATE:				
46) DIMENSIONS TO CENTER OF GRAVITY	W/SH-1084	DATE:				
47) DIMENSIONS TO CENTER OF GRAVITY	W/SH-1084	DATE:				
48) DIMENSIONS TO CENTER OF GRAVITY	W/SH-1084	DATE:				
49) DIMENSIONS TO CENTER OF GRAVITY	W/SH-1084	DATE:				
50) DIMENSIONS TO CENTER OF GRAVITY	W/SH-1084	DATE:				
51) DIMENSIONS TO CENTER OF GRAVITY	W/SH-1084	DATE:				
52) DIMENSIONS TO CENTER OF GRAVITY	W/SH-1084	DATE:				
53) DIMENSIONS TO CENTER OF GRAVITY	W/SH-1084	DATE:				
54) DIMENSIONS TO CENTER OF GRAVITY	W/SH-1084	DATE:				
55) DIMENSIONS TO CENTER OF GRAVITY	W/SH-1084	DATE:				
56) DIMENSIONS TO CENTER OF GRAVITY	W/SH-1084	DATE:				
57) DIMENSIONS TO CENTER OF GRAVITY	W/SH-1084	DATE:				
58) DIMENSIONS TO CENTER OF GRAVITY	W/SH-1084	DATE:				
59) DIMENSIONS TO CENTER OF GRAVITY	W/SH-1084	DATE:				
60) DIMENSIONS TO CENTER OF GRAVITY	W/SH-1084	DATE:				
61) DIMENSIONS TO CENTER OF GRAVITY	W/SH-1084	DATE:				
62) DIMENSIONS TO CENTER OF GRAVITY	W/SH-1084	DATE:				
63) DIMENSIONS TO CENTER OF GRAVITY	W/SH-1084	DATE:				
64) DIMENSIONS TO CENTER OF GRAVITY	W/SH-1084	DATE:				
65) DIMENSIONS TO CENTER OF GRAVITY	W/SH-1084	DATE:				
66) DIMENSIONS TO CENTER OF GRAVITY	W/SH-1084	DATE:				
67) DIMENSIONS TO CENTER OF GRAVITY	W/SH-1084	DATE:				
68) DIMENSIONS TO CENTER OF GRAVITY	W/SH-1084	DATE:				
69) DIMENSIONS TO CENTER OF GRAVITY	W/SH-1084	DATE:				
70) DIMENSIONS TO CENTER OF GRAVITY	W/SH-1084	DATE:				
71) DIMENSIONS TO CENTER OF GRAVITY	W/SH-1084	DATE:				
72) DIMENSIONS TO CENTER OF GRAVITY	W/SH-1084	DATE:				
73) DIMENSIONS TO CENTER OF GRAVITY	W/SH-1084	DATE:				
74) DIMENSIONS TO CENTER OF GRAVITY	W/SH-1084	DATE:				
75) DIMENSIONS TO CENTER OF GRAVITY	W/SH-1084	DATE:				
76) DIMENSIONS TO CENTER OF GRAVITY	W/SH-1084	DATE:				
77) DIMENSIONS TO CENTER OF GRAVITY	W/SH-1084	DATE:				
78) DIMENSIONS TO CENTER OF GRAVITY	W/SH-1084	DATE:				
79) DIMENSIONS TO CENTER OF GRAVITY	W/SH-1084	DATE:				
80) DIMENSIONS TO CENTER OF GRAVITY	W/SH-1084	DATE:				
81) DIMENSIONS TO CENTER OF GRAVITY	W/SH-1084	DATE:				
82) DIMENSIONS TO CENTER OF GRAVITY	W/SH-1084	DATE:				
83) DIMENSIONS TO CENTER OF GRAVITY	W/SH-1084	DATE:				
84) DIMENSIONS TO CENTER OF GRAVITY	W/SH-1084	DATE:				
85) DIMENSIONS TO CENTER OF GRAVITY	W/SH-1084	DATE:				
86) DIMENSIONS TO CENTER OF GRAVITY	W/SH-1084	DATE:				
87) DIMENSIONS TO CENTER OF GRAVITY	W/SH-1084	DATE:				
88) DIMENSIONS TO CENTER OF GRAVITY	W/SH-1084	DATE:				
89) DIMENSIONS TO CENTER OF GRAVITY	W/SH-1084	DATE:				
90) DIMENSIONS TO CENTER OF GRAVITY	W/SH-1084	DATE:				
91) DIMENSIONS TO CENTER OF GRAVITY	W/SH-1084	DATE:				
92) DIMENSIONS TO CENTER OF GRAVITY	W/SH-1084	DATE:				
93) DIMENSIONS TO CENTER OF GRAVITY	W/SH-1084	DATE:				
94) DIMENSIONS TO CENTER OF GRAVITY	W/SH-1084	DATE:				
95) DIMENSIONS TO CENTER OF GRAVITY	W/SH-1084	DATE:				
96) DIMENSIONS TO CENTER OF GRAVITY	W/SH-1084	DATE:				
97) DIMENSIONS TO CENTER OF GRAVITY	W/SH-1084	DATE:				
98) DIMENSIONS TO CENTER OF GRAVITY	W/SH-1084	DATE:				
99) DIMENSIONS TO CENTER OF GRAVITY	W/SH-1084	DATE:				
100) DIMENSIONS TO CENTER OF GRAVITY	W/SH-1084	DATE:				

UNLESS OTHERWISE NOTED THIS IS A AUTOCAD CONTROLLED DOCUMENT.

THIS PRINT IS THE PROPERTY OF GRADALL INDUSTRIES, INC. AND CONTAINS PROPRIETARY AND CONFIDENTIAL INFORMATION OF GRADALL. IT MAY NOT BE COPIED OR DISCLOSED TO ANY THIRD PARTY WITHOUT GRADALL'S WRITTEN CONSENT AND IS PROVIDED FOR THE LIMITED PURPOSE OF REVIEW AND EVALUATION.

23'-4"

14'-10"



# VACALL™ LIMITED WARRANTY

Gradall Industries, Inc. d/b/a Vacall ("Vacall") will repair or replace, at its option, any factory-installed part that is defective in materials or workmanship under normal use. Any needed part replacements will be made using new or remanufactured parts. This Limited Warranty is limited to repairing or replacing, at Vacall's option, any part proven defective under normal use; provided that the product has been properly registered with Vacall within thirty days after the in-service date and that all required reports are current. The warranty period begins on the product's in-service date, which is the first date the unit is either delivered to an end-user (the "Owner"), for purchase, rental or lease.

## THIS WARRANTY EXTENDS ONLY TO THE ORIGINAL PURCHASER AND IS NON-TRANSFERABLE.

The Owner is responsible for all normal preventative maintenance and scheduled maintenance as detailed in the machine's Operator and Safety Manual. The Owner is also responsible for:

- Keeping the Operator and Safety Manual available to the operator of the product.
- Using the product in accordance with the Operator and Safety Manual.
- Releasing the product for warranty work.
- Reporting accidents immediately to Vacall.
- Using the product for safe, approved applications and using only approved accessories.
- Complying with factory initiated Field Campaigns.
- Using only approved components for maintenance and replacement parts.
- Ensuring that the operator of the product has been properly trained in the safe and proper use of the product.

This Limited Warranty is subject to those limitations and exclusions as listed in the Vacall Policies & Procedures Manual (41200071), which includes timelines and requirements for making claims under this Limited Warranty.

## STANDARD WARRANTY

Vacall products carry the following warranties from the unit's in-service date:

- Module Warranty..... 1 Year Warranty
- Debris Body Warranty
  - Untreated Steel ..... 1 Year Warranty
  - Weathering Steel ..... 1 Year Warranty
  - Spray-in Lining ..... 5 Years Warranty
  - Galvanized ..... Lifetime Warranty
  - Stainless Steel ..... Lifetime Warranty
- Water Tank Warranty
  - Polypropylene ..... 1 Year Warranty
  - Aluminum ..... Lifetime Warranty\*

*\*Warranty covers the cost to repair or replace the tank at Vacall's discretion. Repairs must be done in strict compliance with Factory approved procedures and materials. Contact Vacall Service for instructions.*

*Replacement of a tank must be approved in advance by Vacall. After one (1) year, only parts will be covered by warranty if the tank is replaced.*

## What Is Not Covered

- Parts associated with unit maintenance are not warranted beyond 1 year of the product's in-service date.
- Items subject to normal wear and tear, noise, vibration, or deterioration are not warranted.
- This Limited Warranty does not cover damage caused by abusive usage or extreme applications.
- Any operation beyond the rated capacity or the improper use or application of the product or the substitution of parts not approved by Vacall or the failure to release the product for warranty work.
- The Chassis, Auxiliary Engine (if equipped), Tires and Batteries are warranted by the applicable Manufacturer.





#### **CORROSION WARRANTY**

Vacall products carry the following warranties from the product's in-service date:

- Corrosion Warranty . . . . . 5 Years Warranty

#### **What Is Not Covered**

- Debris Body Corrosion is not warranted beyond its applicable standard warranty period.
- Corrosion due to external forces or damage caused by stones, salt, gravel, accidents, chemicals or other forms of impact, industrial fallout or pollution, or previous repair.
- External surface rust left unrepaired due to neglect of the product.

#### **EXTENDED WARRANTY**

An Extended Warranty may be purchased for a Vacall product at any time up to the end of the Standard Warranty period. A maximum of 4 extra years of Standard Warranty may be purchased for a maximum of 5 years.

#### **What Is Not Covered**

- Extended Warranty does not cover items subject to service, maintenance, or normal wear, including but not limited to O-rings, Seals, Hoses, Paint, Tires, Belts, or Filters.
- Extended Warranty does not extend the warranty of items supported by limited or separate warranties such as the Chassis, Auxiliary Engine, Water Tanks, Debris Bodies and Corrosion.
- Extended Warranty may not be available for certain Industrial Machines and/or Applications due to their extreme nature.

#### **MISCELLANEOUS**

- Proper venue for any lawsuits arising from or related to this Limited Warranty shall only be in Tuscarawas County, Ohio, and governing law shall be the laws of the State of Ohio.
- Vacall may waive compliance with any of the terms of this Limited Warranty, but no waiver of any terms shall be deemed to be a waiver of that term in the future or of any other term.
- If any provision of this Limited Warranty shall violate any applicable law and is held to be unenforceable, then the invalidity of such provision shall not invalidate any other provisions herein.

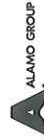
EXCEPT AS PROVIDED HEREIN, VACALL MAKES NO WARRANTIES OF ANY KIND, EXPRESS OR IMPLIED, INCLUDING NO WARRANTIES OF MERCHANTABILITY OR FITNESS FOR A PARTICULAR USE WITH RESPECT TO PRODUCTS OR PARTS FURNISHED BY VACALL. EXCEPT AS PROVIDED HEREIN, VACALL SHALL HAVE NO LIABILITY OR RESPONSIBILITY TO OWNER OR ANY OTHER PERSON OR ENTITY WITH RESPECT TO ANY LIABILITY, LOSS, OR DAMAGE CAUSED OR ALLEGED TO BE CAUSED DIRECTLY OR INDIRECTLY BY THE PRODUCTS INCLUDING, BUT NOT LIMITED TO, ANY INDIRECT, SPECIAL, CONSEQUENTIAL, OR INCIDENTAL DAMAGES RESULTING FROM THE USE OR OPERATION OF THE PRODUCTS OR ANY BREACH OF THIS WARRANTY. VACALL'S MAXIMUM LIABILITY UNDER THIS WARRANTY SHALL BE THE PURCHASE PRICE PAID TO VACALL WITH RESPECT TO THE WARRANTED PRODUCT.

# VACALL™

**Gradall Industries, Inc.**

406 Mill Ave. SW  
New Philadelphia, Ohio 44663  
Phone: 330.339.2211  
Toll Free: 800.382.8302  
Fax: 330.339.8468  
[www.vacall.com](http://www.vacall.com)

Certified ISO 9001 • 01/15  
Part No. 41200085





Freightliner (FTL)



Run Smart™

## Freightliner Medium Truck

Coverage <sup>1</sup>		
Description	Time <sup>2</sup>	Distance <sup>2</sup>
Basic Vehicle	2 Years	Unlimited
Battery	1 Year	100,000 mi/161 000 km
Brightwork	6 Months	Unlimited
Cab Corrosion/Perforation	5 Years	Unlimited
Cab Structure	5 Years	Unlimited
Corrosion	6 Months	Unlimited
Crossmembers	5 Years	Unlimited
Diesel Emission 2010 <sup>3</sup>	5 Years	100,000 mi/161 000 km
Frame Rails	5 Years	Unlimited
GHG14 <sup>4</sup> (Light Heavy Duty Trucks)	5 Years	50,000 mi/80 500 km
GHG14 <sup>4</sup> (Medium Heavy Duty to Heavy Heavy Duty Trucks)	5 Years	100,000 mi/161 000 km
GHG14 <sup>4</sup> (Medium Heavy Duty to Heavy Heavy Duty Tractors)	5 Years	100,000 mi/161 000 km
GHG14 <sup>4</sup> Tire	2 Years	24,000 mi/38 400 km
Hybrid Transmission – Eaton <sup>5</sup>	3 Years	150,000 mi/240 000 km
Paint	1 Year	100,000 mi/161 000 km
Paint, Chassis	6 Months	Unlimited
Front Axle <sup>6</sup>	2 Years	Unlimited
Rear Axle	2 Years	Unlimited
Transfer Case	2 Years	Unlimited
Transmission <sup>5</sup>	2 Years	Unlimited
Detroit Front Axle <sup>6</sup> (File Direct)		
Post-Model Year 2011 <sup>7</sup>	2 Years	Unlimited
Post-Model Year 2011 <sup>8</sup>	4 Years	Unlimited
Detroit Rear Axle (File Direct)		
Post-Model Year 2011 <sup>7</sup>	2 Years	Unlimited
Post-Model Year 2011 <sup>8</sup>	4 Years	Unlimited
Detroit DT-12 Transmission <sup>5,9</sup> (File Direct)	5 Years	750,000 mi/1 200 000 km

<sup>1</sup>Coverage may vary; check vehicle's actual warranty coverage online via OWL's Coverage Info/Check Coverage screen.<sup>2</sup>Time or distance, whichever comes first<sup>3</sup>Applies to vehicles equipped with EPA 2010 compliant diesel engines.<sup>4</sup>Applies to models 2013 and later domiciled in the United States, check actual warranty online via OWL's Coverage Info/Check Coverage screen for coverage listed as GHG14..."<sup>5</sup>Customers will have only one (1) type of transmission coverage, depending on how the vehicle is spec'd.<sup>6</sup>Front axle coverage is also applicable to gliders.<sup>7</sup>Medium Duty – General Service: Warranty coverage is determined by Gross Combination Weight Rating, road surface, and vocation.Please see [www.ddcsn.com](http://www.ddcsn.com) for specific coverage details.<sup>8</sup>Medium Duty – General Service Plus: Warranty coverage is determined by Gross Combination Weight Rating, road surface, and vocation.Please see [www.ddcsn.com](http://www.ddcsn.com) for specific coverage details.<sup>9</sup>Detroit Transmission: Warranty coverage is determined by Gross Combination Weight Rating, road surface, and vocation. Please see [www.ddcsn.com](http://www.ddcsn.com) for specific coverage details.

## Warranty Statement &amp; Warranty Coverage Descriptions follow on page two of this document.

The information provided in this document is for general information only and is not offered as customer's warranty.

This coverage may be superseded without notification.

Copyright © Daimler Trucks North America LLC. All rights reserved. Daimler Trucks North America LLC is a Daimler company.

Page 1 of 1

Effective: 01/14/2014



# Warranty Statement

## 1.1 New Vehicle Coverage

The following section outlines Company standard warranty coverages for all Company vehicles, apparatus or chassis or cabs sold by Daimler Trucks North America and domiciled in the USA (50 states and Washington, D.C.) and Canada. This information is also included in the Owner's Warranty Information Booklet.

See Warranty Coverage Descriptions for standard warranty coverages by make and model. Additional coverage may apply, verify actual coverages with your local dealership for specific vehicle warranty.

## 1.2 New Vehicle Limited Warranty

Under this New Vehicle Limited Warranty ("Warranty"), Company warrants that each new vehicle will be free from defects in material and workmanship that occur under normal use within the applicable warranty period, subject to certain limitations and exclusions as specified in this document.

This limited warranty applies only to new vehicles sold by an authorized Daimler Trucks North America (DTNA) dealer or ordered directly from DTNA; vehicles sold at auction or as a result of repossession retain the warranty coverage from the original in-service date or factory invoice date if the vehicle has not been warranty registered.

Daimler Trucks North America LLC reserves the right to reduce or remove coverage on vehicles in salvage condition.

This Warranty covers all components and parts unless specifically covered by other warranties or otherwise excluded by this document.

## 1.3 Limitations

This Warranty does not apply to vehicles that are sold or domiciled outside of the United States (50 states and Washington, D.C.) or Canada.

This Warranty does not apply to engines, Allison transmissions, tires, or other components or parts that are not manufactured by Company and that are warranted directly by their respective manufacturers. Progressive damage caused by these manufacturers' components to any other parts including, but not limited to, parts installed by Company is excluded from Company warranty coverage. With respect to the foregoing, Company makes no warranty whether express, implied, statutory or otherwise including, but not limited to, any warranty of merchantability or fitness for a particular purpose.

THIS WARRANTY IS EXCLUSIVE AND IN LIEU OF ALL OTHER WARRANTIES OF ANY KIND WHETHER WRITTEN, ORAL, OR IMPLIED INCLUDING, BUT NOT LIMITED TO ANY WARRANTY OF MERCHANTABILITY OR FITNESS FOR A PARTICULAR PURPOSE. THIS WARRANTY SPECIFICALLY EXCLUDES ANY OTHER

WARRANTIES OR CONDITIONS PROVIDED FOR BY LAW, WHETHER STATUTORY OR OTHERWISE.

COMPANY'S SOLE OBLIGATION UNDER THIS WARRANTY SHALL BE TO REPAIR OR REPLACE, IN COMPANY'S SOLE DISCRETION, ANY DEFECTIVE COMPONENT OR PART, SUCH REPAIR OR REPLACEMENT SHALL BE WITHOUT COST TO PURCHASER WHEN PERFORMED WITHIN THE APPLICABLE WARRANTY PERIOD (TIME, DISTANCE, OR HOUR LIMIT, WHICHEVER OCCURS FIRST).

Purchaser must notify Company within the applicable warranty period, of any failure of the vehicle to comply with this Warranty and Purchaser must, at Purchaser's expense, promptly return the vehicle to an Authorized Service Facility for inspection and repair or replacement of any defect in material or workmanship occurring within the applicable warranty period. During New Vehicle coverage, warranty reimbursement will not be paid on repairs performed by customers on their own vehicles without a current Customer Performed Warranty Agreement (CPWA).

The vehicle must be maintained and serviced according to the prescribed schedules outlined in the Driver's/Operator's and Maintenance Manuals. Receipted bills and other evidence that required maintenance and service have been performed are required by Company as a condition of this Warranty.

After the Company's obligations under this Warranty expire, all liabilities of Company to Purchaser under this Warranty shall terminate. Repairs made under this Warranty do not constitute an extension of the original Warranty period for the vehicle, or for any specific component or part.

To the extent that any provision of this Warranty contravenes the law of any jurisdiction, such provision shall be inapplicable in such jurisdiction, and the remainder of the warranty shall not be affected.

## 1.4 Purchaser's Exclusive Remedy

THIS WARRANTY SHALL BE THE PURCHASER'S SOLE AND EXCLUSIVE REMEDY AGAINST COMPANY, WHETHER IN CONTRACT, UNDER STATUTE (INCLUDING STATUTORY PROVISIONS AS TO CONDITIONS AS TO QUALITY OR FITNESS FOR ANY PARTICULAR PURPOSE OF GOODS SUPPLIED PURSUANT TO THE CONTRACT OF SALE), WARRANTY, TORT, STRICT LIABILITY, OR ANY OTHER LEGAL THEORY.

## 1.5 Limitation of Liability

COMPANY'S LIABILITY UNDER THIS WARRANTY IS LIMITED TO THE COST TO REPAIR OR REPLACE, IN COMPANY'S SOLE DISCRETION, THE DEFECTIVE COMPONENT OR PART THAT IN NO EVENT SHALL EXCEED THE FAIR MARKET VALUE OF THE VEHICLE AT THE TIME THE DEFECT IS DISCOVERED.

IN NO EVENT SHALL COMPANY BE LIABLE FOR SPECIAL, INDIRECT, INCIDENTAL, OR CONSEQUENTIAL DAMAGES INCLUDING, BUT NOT LIMITED TO, INJURIES TO PERSONS OR DAMAGE



TO PROPERTY, LOSS OF PROFITS OR ANTICIPATED PROFITS, OR LOSS OF VEHICLE USE.

### 1.6 Exclusions

The following components, parts, or conditions are specifically excluded from coverage under this Warranty.

#### AERODYNAMIC WHEEL COVERS

Aerodynamic wheel covers are excluded from coverage under this Warranty

#### AIR SPRINGS

Tolerance buildup can occur during the assembly process of the rear suspension and rear cab air springs, and can cause the springs to have the appearance of being crooked, misaligned or improperly installed. This tolerance buildup is not detrimental to the operation of the vehicle and will not have an effect on either the quality of the ride or the durability of the components or vehicle. Straightening of these springs is not covered under this Warranty.

#### ALIGNMENT OF AXLES/WHEELS/STEERING

Each DTNA vehicle manufacturing plant uses an integrated alignment system to align axles and wheels and to center the steering wheel to Daimler Trucks North America LLC specifications. Realignment or readjustment of these items, including steering stops and steering poppets, is not covered under warranty.

Any special alignment settings at the request of the Owner must be handled between the Dealer and Owner after delivery from factory. These special adjustments are not covered under Warranty.

#### AXLE BREATHER VENTS

During the vehicle manufacturing process, an oil run or drip stain may appear at the breather vent. Removing the vent, applying pipe sealant to the threaded vent fitting and re-installing the vent is unnecessary. Removing the axle breather vent and re-sealing the threaded fitting is not covered under this Warranty.

#### CAB INTERIOR COMPONENTS

The repair or replacement of cab interior components that are rendered unserviceable due to normal wear or abuse are not covered under this Warranty.

These components include, but are not limited to:

- Curtains
- Floor coverings (including floor mats)
- Painted trim components
- Steering wheel
- Steering wheel wrap
- Upholstery
- Window shades

#### CHROME SURFACES, ALUMINUM AND STAINLESS STEEL COMPONENTS

The following items ARE covered under this Warranty:

- Chrome peeling off in sheets
- Chrome cut at mounting bolts due to over-torque at the factory
- Bubbles in the chrome that are not caused by rock chips and/or general rust conditions
- Isolated rust along seams or welds

The following items are NOT covered under this Warranty:

- General rust, for example, rust on the unfinished backside of a bumper
- Dimpling at the mounting bolts
- Staining, bluing, and/or yellowing that can be cleaned with a quality cleaning-product
- Rust, pits, and/or nicks caused by road wash or road debris breaking the chrome surface
- Streaks/stains/corrosion caused by severe wash solutions or corrosive road salts/chemicals

Claims pertaining to failures of chrome surfaces, aluminum, and stainless steel components will not be processed unless a clear digital picture is provided that adequately shows the defect.

#### CLUTCH ADJUSTMENT

Clutch adjustments are normally required due to clutch wear and are considered normal maintenance. However, if the clutch adjustment is found to be outside of Company specifications during, or prior to, in-service of the vehicle, a warranty claim will be accepted on a one-time basis.

Claims for clutch adjustments will not be accepted unless the adjustment is found to be outside of Company specifications using the special clutch adjustment measuring tools provided by Company (e.g., adjusting the clutch to satisfy feel will not be accepted as warranty).

#### COMPETITION

Warranty will become void on any vehicle that is used in competition, including but not limited to:

- Racing
- Tractor pulls
- Other motor sports

#### CONSUMABLE PARTS

Parts that are subject to consumption during their normal service life and are routinely replaced during normal maintenance services are covered up to 15,000 miles (24,000km) for all Daimler Trucks North America LLC vehicles except for Thomas Built Bus (TBB) bodies and chassis. TBB consumable parts are covered up to 30 days from date of in-service.

These items are:

- Antennas
- Ashtrays
- Belts
- Brake Linings
- Cigarette lighter assembly
- Clutch brake
- Clutch linings
- Data logger batteries
- Desiccant cartridges
- Fire extinguishers
- Fluorescent ballast and tubes
- Fuses
- Gladhand
- Hosetennas
- Light bulbs
- Mattresses
- Mud flaps
- Mud flap mounting brackets
- Caps (including, but not limited to, DEF, fuel, radiator, surge tank)
- Receiver-dryer filter
- Trailer air hoses
- Trailer electrical cables



- Windshield washer nozzles
- Wiper arms and blades (TBB makes – wiper blades only)

Consumable parts NOT covered under this Warranty include, but are not limited to, the following:

- Antifreeze
- Filters (fuel, air, oil, water)
- Fluids (unless low due to a warrantable failure)
- Lubricant

#### **CORROSION**

A detailed list of exclusions for CORROSION is listed under Warranty Coverage Descriptions.

#### **DAMAGE**

The following are not covered under this Warranty:

- Damage caused by use of the vehicle in any application that is not approved or is inconsistent with build specifications
- Damage resulting from improper use or misuse or abuse, negligence, improper operation, improper or insufficient maintenance (including, but not limited to failure to maintain vehicle as outlined in the driver's/operator's and maintenance manuals), overloading, unauthorized modifications, accidents, or operation at excessive speeds
- Environmental damage, including airborne fallout (including chemicals, tree sap, etc.), or other atmospheric conditions, hailstones, or other acts of nature
- Damage caused by road salts/chemicals or cleaning solvents, detergents or compounds
- Storage deterioration including damage caused by improper or insufficient storage or maintenance
- Damage caused by road hazards or road conditions
- Damage caused during shipping/transport after initial delivery of vehicle
- Damages (including peeling or flaking) caused by high-pressure washing or steam-cleaning
- Damages occurring after in-service (e.g., from rock chips)
- Damages caused by customer-installed sealer in air conditioning systems
- Damages caused by engine horsepower/torque upgrades
- Damage due to vibration associated with misapplication or improper operation of drivetrain components
- Damage due to terrorist activities
- Damage due to acts of war

#### **ENGINE**

The engine, including all of its components as supplied by the engine manufacturer, is not covered under this Warranty, but is warranted separately by the manufacturer of the engine. For engine warranty or service, contact the engine manufacturer's authorized sales and service facility.

#### **ENGINE BRAKES, AIR COMPRESSORS, AND OTHER PROPRIETARY ENGINE COMPONENTS**

The engine manufacturer installs most air compressors and engine brakes. Any failure of a proprietary engine component or Jacob® Brake component must be filed directly to the engine manufacturer. Failures on non-proprietary engine components can be filed through DTNA.

#### **EXHAUST SYSTEM CLAMPS**

During the early life of the vehicle or when the engine is cold, many exhaust clamps exhibit a soot trace. This condition is self-correcting and does not require adjustment, tightening, or replacement of the clamp. Claims for adjusting or tightening will not be paid under warranty.

#### **FIFTH WHEELS**

Adjustment of the locking mechanism, bushings, slide locking plungers, and the repair or replacement of lock guards are considered routine maintenance and are not covered under this Warranty.

#### **GLASS, MIRRORS, LENS**

Glass, mirror, or lens breakage or chips or scratches of glass, mirrors, or lenses are not covered by this Warranty.

#### **MISAPPLICATION OF VEHICLE**

The warranty on any vehicle used inconsistent with its specified vocation/application will be downgraded to the warranty that is consistent with the vehicle use. Any and all claims associated with the misapplication of the vehicle will be subject to chargeback.

#### **MISCELLANEOUS EXPENSES**

Premium charges and work not directly related to the repair or replacement of a warranted part are not covered under this Warranty. Examples include, but are not limited to:

- Federal, state, provincial, and local taxes
- Travel expenses
- Loss of revenue
- Customer labor, including overtime labor
- Downtime
- Driver's expenses
- Cost of rental equipment
- Loss of cargo, including perishable cargo
- General housekeeping supplies (i.e., rags, solvents, sweeping compounds, coveralls, etc.)
- Communication charges
- Towing/road call assistance (unless coverage is specifically stated in the applicable warranty coverage table)
- Repair or replacement of optional items not sold or installed by company
- Removal or replacement of dealer, body builder, or customer installed equipment
- Environmental fees, cleanup, or other charges
- Cost of emergency services

#### **MODIFICATIONS TO ORIGINAL EQUIPMENT**

Company does not warrant vehicle component or chassis modifications, or equipment installations arranged by Dealers or Customers. In addition, the extra time necessary to remove body builder installed items and/or equipment to work on a warranted repair is not covered under this Warranty unless Company sells the complete chassis/body/equipment as a package.

If Dealers or Customers perform any vehicle modifications or equipment installations, to the extent these modifications or equipment installations adversely affect other vehicle components or vehicle performance, Company shall not accept any product liability or claims under the terms of the vehicle warranty. These claims become the sole responsibility of the person performing the modifications or equipment installations.



**PAINT**

The following exclusions to paint warranty include, but are not limited to:

- Complete chassis re-painting to repair paint damages
- Damages occurring after in-service (e.g., from rock chips)
- Peeling/flaking caused by high-pressure washing or steam cleaning
- Rusting of painted bumpers
- Removal and/or replacement of decals, striping, and/or lettering not applied by Company
- Specific areas of the vehicle are deliberately not painted or are not painted to any standard; paint repairs are not warrantable to such areas. These areas include:
  - Underside of the hood, including the inside of the wheel wells
  - Underside of the roof-mounted air fairings
  - Underside of the exterior sun visor
  - Inside of the side-mounted air fairings
  - Inside of the bumper
  - Aftertreatment devices

**Gloss**

Gloss Warranty claims pertaining to gloss issues on vehicles painted with low-gloss colors (identified in the Data Books) will not be covered under this Warranty.

**SHIP LOOSE ITEMS AND COMPONENTS**

During the manufacturing process, certain vehicle components are normally placed in the cab of the vehicle or strapped down to the chassis for security reasons. It is the Dealer's responsibility to mount these "ship loose" items in the correct location on the vehicle. Mounting of "ship loose" items will not be covered under warranty.

These items include, but may not be limited to, the following:

- Aerodynamic wheel covers
- Antennas
- Fire extinguishers
- Trailer air hoses
- Trailer electrical cables
- Winter fronts
- Tire inflation hoses
- Spare wheels/tires
- Chrome lug nut covers
- Driver's pouch
- Jacks

Daimler Trucks North America has established a Roof Fairing Removal program in order to reduce transport related damage. The Transporter will remove the fairing during the decking process and secure the fairing on the frame rail of the unit. Benefits for this program include fewer units towed in reverse and an overall improved delivery process.

Some units will continue to be received with the fairing collapsed. It is the Dealer's responsibility to mount these fairings correctly. Claims for mounting of these collapsed fairings will not be covered under warranty.

Those units received with the fairing removed, DTNA warranty will reimburse for the re-installation of the roof fairing prior to delivery to the end customer.

If vehicle is drop shipped directly to customer:

Transporter notifies customer that roof fairing has been removed for transport and arranges for re-installation prior to or at delivery.

- If customer has facilities for re-installation of roof fairings, then fairings will be re-installed at final delivery location.
- If customer does not have facilities to re-install fairings, transporter will arrange with nearest authorized DTNA dealership to have fairings re-installed and shuttle units to customer location at no additional cost to our customer.

**TRANSMISSIONS**

Allison transmissions and components are not covered under this Warranty, but are warranted separately by Allison. Information regarding Allison's warranty is provided for informational purposes only and is subject to change. For warranty or service information, contact Allison's authorized sales and service facility.

The Detroit DT-12 Transmission is not covered under this Warranty. Please see [www.ddcsn.com](http://www.ddcsn.com) for coverage details.

**ROUTINE MAINTENANCE**

Routing maintenance, servicing, and adjustment, as defined in the applicable Vehicle Maintenance Manual and Driver's Manual, are excluded from Warranty.

Periodic adjustment or re-torque of wheel bearings, wheel lug nuts, and suspension U-bolts are considered maintenance adjustments and are not covered under warranty.

Vibrations, squeaks, rattles, loose fittings/clamps, hose fitting leaks, loose nuts/bolts/screws, and loose electrical connections may develop during the initial trip(s) of the vehicle and these types of repairs/adjustments are covered under warranty one time during the following applicable initial operating periods unless excluded in the paragraphs below.

Reminder: After the following initial operating periods, these developments are the result of use and their repair/adjustment activities are considered routine maintenance and thus excluded from warranty.

**INITIAL OPERATING PERIOD**

The Initial Operating Period (IOP) for Daimler Trucks North America LLC vehicles is as follows:

Make	Initial Operating Period
Freightliner, Sterling, Western Star	Up to 15,000 miles/ 24 000 km
Freightliner Custom Chassis Corporation (FCCC)	Up to 25,000 miles/ 40 000 km
Thomas Built Bus (TBB) bodies and TBB chassis*	Up to 8 months from date of In-service

\* TBB applications utilizing FCCC chassis retain the FCCC IOP separate from the TBB body.

See **CONSUMABLE PARTS** elsewhere in this section.

Exclusions from warranty during the IOP are:

- Cab, hood, and fender-mounted mirrors are adjusted at the factory but may be retracted by the transporter to prevent damage during transport. Subsequent adjustments and tightening of mirror



mounting hardware are considered part of the routine preparation of the vehicle before Customer delivery. Claims for adjusting the mirrors or tightening of the attaching hardware will not be paid under warranty during or after the initial operating period.

- Claims for re-routing of electrical wiring, hoses, or lines which meet Daimler Trucks North America's routing standards will not be paid under warranty during or after the initial operating period.
- Final preparation of the vehicle for Customer delivery to include cleaning/vacuuming interior of cab, washing windows, washing the exterior of the vehicle, polishing exterior chromed or painted surfaces are considered as ordering-Dealer responsibilities. Claims for these activities will not be paid under warranty during or after the initial operating period.

#### TEST VEHICLES

Any vehicles being used in testing or used to test specific components must be identified to the Warranty Department and accommodations must be made for claims that relate to the test item(s).

Any vehicles used in endurance testing, such as the Altoona Test, are void of all warranty, new or used.

#### TIRES AND TIRE BALANCING

The tires are not covered under this Warranty, but are warranted separately by the tire manufacturer. Tire balancing is not covered under warranty.

### 1.7 Transfer of Warranty

This Warranty is transferable to a subsequent Owner if it has not expired. To ensure the Owner receives proper warranty recognition, the ownership information should be updated in the Company system.

### 1.8 Change of Owner Address Information

To ensure Company's ability to reach the current Owner with Recall and Field Service campaign information, the Owner's information must be updated whenever there is a change to the Owner's name or address.

### 1.9 Product Improvement

Company reserves the right to make improvements or changes to the product at any time without incurring any obligation to make such changes or improvements to any other vehicle.

### 1.10 Owner's Responsibilities

It is the Owner's responsibility to ensure the vehicle is maintained as outlined in the Driver's/Operator's and Maintenance Manuals. It is important that the new Owner becomes familiar with the contents of the warranty information. When the Owner first receives the vehicle, Dealer should review the Owner's Warranty Information booklet with the Owner.

To initiate warranty, customer must complete and sign the Warranty Start Form (WAR275). Dealer must attach the Warranty Start Form to the Product Registration screen in OWL.

## Coverage Descriptions

### Axles

Coverage includes all factory-installed front axles; rear axles; steer axles; drive axles; tag axles; and pusher axles. Detroit axles are warranted directly through Detroit. *Excludes any axle installed by a dealer or body builder.*

#### Detroit Axle(s)

All warranty inquiries and claims are filed directly to Detroit Axles. Please see [www.ddcsn.com](http://www.ddcsn.com) for specific coverage details.

#### Drive Axle(s)

Coverage includes axle housing, carrier assembly, differential assembly, power divider, axle shafts, and gaskets and seals. *Excludes suspension and torque rod brackets, tie rod ends, wheel end equipment, wiring, yokes, and attaching hardware.*

#### Front Axle(s)

Coverage is for non-Detroit front axle(s) only. Coverage includes I-beam, steering knuckles, differential on drive steer axle, spindles, kingpin bearings, and steering arms. *Excludes tag axle(s), pusher axle(s), wheel end equipment, steering linkage components, driveline(s), U-joints, and kingpin bushings/kingpin seals.*

#### Pusher Axle

A pusher axle is a non-driven, weight-bearing axle that can be raised when not required to bear a portion of the load. Since the pusher axle can be of many different configurations, warranty coverage includes all components included in the individual build specification of each individual application.

#### Rear Axle(s)

Coverage is for non-Detroit rear axle(s) only. Coverage includes axle housing, carrier assembly, differential assembly, power divider, axle shafts, and gaskets and seals. *Excludes tag axle(s), pusher axle(s), suspension and torque rod brackets, wheel end equipment, wiring yokes, driveline(s), U-joints, and attaching hardware.*

#### Steer Axle(s)

Coverage includes I-beam, steering knuckles, differential on drive steer axle, spindles, kingpins, kingpin bearings and steering arms. *Excludes wheel end equipment, tie rod ends, steering linkage components, kingpin bushings, and king pin seals.*

#### Tag Axle

A tag axle is a non-driven, continuous weight-bearing axle. Since the tag axle can be of many different configurations, warranty coverage includes all components included in the individual build specification of each individual application.

### Battery

Coverage includes Alliance Brand Batteries only; claims for all other brands must be submitted directly to the supplier. Includes starting battery assemblies and factory-installed APU battery assemblies. *Excludes non-*



Alliance Brand batteries, battery cables, battery mounting box and hardware.

### Basic Chassis

Coverage includes all factory-installed components of the vehicle/chassis that are not excluded elsewhere in the warranty or by special agreement or described as having a different time, or distance or hours, or listed separately on each new vehicle warranty coverage chart.

### Basic Vehicle

Coverage includes all factory-installed components of the vehicle/chassis that are not excluded elsewhere in the warranty, or by special agreement or described as having a different time or distance, or listed separately on each new vehicle warranty coverage chart.

### Brightwork

Coverage includes all factory-installed components with chrome, polished aluminum, or polished stainless steel surfaces. *Excludes any damage backside of bumpers, and concealed or inner surfaces.*

### Cab Corrosion/Perforation

Coverage is limited to rust-through or perforation of the cab and integral sleeper structure and sleeper box (if applicable) due to corrosion from within. *Excludes all conditions of rust or corrosion that have not resulted in rust-through or perforation as well as surface rust or corrosion caused by non-adhesion. Excludes any damage to the paint such as chips or scratches.*

### Cab Structure

Coverage includes cab and integral sleeper structural components, structural components of factory-installed sleeper boxes (if applicable), sheet metal panels, doors, and hoods. *Excludes all bolt-on components including door and hood hinges, latches, guides, and other mounting hardware.*

### Corrosion

Coverage provides warranty against corrosion to any metal or metal alloy part of the vehicle. Rust or corrosion to specific components and/or caused by certain conditions are excluded from all Company warranty coverage and will not be paid under Basic Vehicle, Cab Structure, Cab Corrosion, or Aftermarket Parts Warranty.

*Exclusions to corrosion warranty include, but are not limited to, the following:*

- *Corrosion caused by general rust (for example, rust on the unfinished backside of a bumper)*
- *Surface rust caused by chips or scratches in the paint or chrome surfaces*
- *Corrosion caused by high-pressure washing, severe wash solutions, cleaning solvents, detergents, compounds*
- *Corrosion caused by salinity in the environment or corrosive salts and/or chemicals used on the road surface.*

- *Corrosion caused by acid rain or other industrial fallout*
- *Corrosion due to improper prevention measures during storage or use*
- *Corrosion or rust on tone rings, rotors or drums (rotor exclusion does not apply to hydraulic discs with Magna-Coat Rotors)*
- *Corrosion due to environmental damage (including ocean spray); airborne fallout (includes chemicals, tree sap, etc.), or other atmospheric conditions or other acts of nature*
- *Corrosion due to improper use, misuse or abuse, negligence, including improper or insufficient maintenance*

### Cowl Corrosion/Perforation

Coverage is limited to rust-through or perforation of the cowl due to corrosion from within. *Excludes all conditions of rust or corrosion that have not resulted in rust-through or perforation as well as surface rust or corrosion caused by non-adhesion. Excludes any damage to the paint such as chips or scratches.*

### Cowl Structure

Coverage includes cowl structural components, sheet metal panels, and hood. *Excludes all bolt-on components including hood hinges, latches, guides, or other mounting hardware.*

### Crossmembers

Coverage includes crossmembers, gussets, and huck-mounting bolts that attach gussets to crossmembers and gussets/crossmembers to frame rails. *Excludes any bolt-on item attached with either conventional or huck bolts.*

### Driveline

Coverage includes driveshaft tubing, U-joints, yokes, support bearings, and splines.

### Frame Rails

Coverage is limited to breaking or cracking of factory-installed frame rails, frame rail liners, frame rail extensions, and any item(s) factory welded to them. *Excludes all bolt-on items regardless if attached with conventional or huck bolts.*

### GHG14\*

Daimler Trucks North America LLC (DTNA) warrants that its vehicles are (1) designed, built and equipped so as to conform, at the time of sale, with requirements of vehicle manufacturers whose vehicles are designed to meet applicable 2014 and later U.S. Environmental Protection Agency and National Highway Traffic and Safety Administration Standards greenhouse gas and fuel efficiency standards, and (2) free from defects in material and workmanship which cause the vehicle to fail to conform with the vehicle manufacturer's requirements for all vehicle emission control items listed below.



\*Coverage name/description may vary, check actual warranty online via OWL's Coverage Info/Check Coverage screen for coverage listed as "GHG14..."

### GHG14 Tire\*

Daimler Trucks North America LLC (DTNA) warrants that its vehicles are (1) designed, built and equipped with tires that conform, at the time of sale, with requirements of vehicle manufacturers whose vehicles are designed to meet applicable 2014 and later U.S. Environmental Protection Agency and National Highway Traffic and Safety Administration greenhouse gas and fuel efficiency standards, and (2) those tires are free from defects in material and workmanship which cause the vehicle to fail to conform with the vehicle manufacturer's requirements for a period of 2 years or 24,000 miles, whichever occurs first. Claims for failures under this coverage are filed directly to the tire manufacturer.

\*Coverage name/description may vary, check actual warranty online via OWL's Coverage Info/Check Coverage screen for coverage listed as "GHG14..."

### Glider

An incomplete vehicle which may be ordered with or without engine and/or major drivetrain components; warranty coverage includes all components as specified in the specific build specification.

### Hybrid Transmission – Eaton

Eaton requires that only hybrid-authorized dealerships work on units equipped with Eaton hybrid parts. Pre-authorization is required prior for repair of these vehicles in order to obtain technical assistance and a pre-authorization number for replacement parts. Eaton hybrid parts will be shipped directly from Eaton and will not be stocked in the PDCs due to the short shelf life and low volume. The following hybrid parts are covered under this Warranty: power electronics carrier (PEC), motor generator, inverter, DC/DC converter, hybrid control module (HCM), transmission control module (TCM), clutch, and electronic clutch actuator (ECA). Coverage does NOT include oil cooler or cooling systems. Please reference Roadranger Warranty Guide TCWY0900 for more information on complete listing of limits and exclusions, as well as terms and conditions.

### Off Road On-Site Assistance

Coverage is exclusively available for off road vehicles that are prohibited from use on public streets. If this coverage is provided, it will be specifically included in the coverage table as a separate category. Coverage includes on-site assistance and/or equipment transportation to the nearest authorized repairing location for a Daimler Trucks North America LLC warrantable repair.

### Paint (Body, Cab, & Cowl)

Paint coverage *excludes lack-of gloss issues on vehicles painted with low gloss colors; the underside of hoods and roof and side mounted air fairings; and any damages to the paint or painted surface such as chips and scratches.*

### Body Paint

Coverage includes all factory-painted exterior body surfaces. Warranted against orange peel; peeling/delaminating; cracking or checking; or loss of gloss due to cracking, checking or hazing.

### Cab Paint

Coverage includes all factory-painted surfaces (except those included in chassis paint coverage). Warranted against orange peel; peeling or delaminating; cracking or checking; or loss of gloss due to cracking, checking or hazing.

### Cowl Paint

Coverage includes all factory-painted exterior surfaces of cowl structure (except those included in chassis paint). Warranted against orange peel; peeling or delaminating; cracking or checking; or loss of gloss due to cracking, checking or hazing.

### Paint, Chassis (Chassis Paint)

Coverage includes all factory painted surfaces on frame rails, crossmembers/gussets, front and rear bumpers, suspension components, power train components, drivelines, fuel tanks, air tanks, wheel end equipment, tool boxes, battery boxes, access steps, and attaching brackets and hardware. Warranted against peeling or non-adhesion. *Excludes U-joints and any damages to the paint or painted surface such as chips and scratches.*

### Towing/Roadside Assistance

Coverage includes roadside assistance or towing (to the nearest authorized repair location) for a Daimler Trucks North America LLC warrantable repair in a vehicle-down situation that prevents the safe and lawful operation of the vehicle. If this coverage is provided, it will be specifically included in the coverage table as a separate category.

### Transfer Case

Coverage includes housing and all internally lubricated parts. *Excludes broken synchronizer pins, PTOs, airlines, gauge, clutch assemblies, driveline(s), and U-joints.*

### Transmission

Coverage does not include Allison transmissions, Detroit transmissions, or Eaton Hybrid transmissions. Coverage includes housing and all internally lubricated parts, electric/air shift/control units, valves, gaskets, and seals. *Excludes broken synchronizer pins, PTOs, airlines, gauge, gauge senders, yoke(s), clutch assemblies, clutch and clutch control components including clutch brake, driveline(s), and U-joints.*

### Wheel End Equipment

Coverage includes brake components, wheels, hubs, drums, rotors, wheel seals/ bearings, slack adjusters, and attaching hardware.

### ISB6.7 Base Warranty.

Cummins 6-cylinder ISB6.7 engine has coverage similar to that of the ISL9, except there is no mileage restriction. The ISB6.7 warranty is good for 2 years with unlimited mileage.

#### 2-Year/Unlimited-Mileage Coverage

■ 100 percent parts and labor on warrantable failures\*

■ Travel or towing when an engine is disabled by a warrantable failure (from date of delivery through the first year)

■ Consumables not reusable due to covered failure

■ No deductible

■ Includes aftertreatment

\*Warrantable failures are those due to defects in Cummins material or factory workmanship.

### Extended Coverage Means Added Security.

A Cummins Protection Plan is the most important travel insurance you can buy. Not only will it protect your business from unexpected expenses, but it will also ensure that you'll always get quality Cummins parts and professional Cummins service. There are two plans to choose from for ISL9 and ISB6.7 engines.



#### Protection Plan 1

Security is knowing that you are protected by comprehensive protection, with options ranging from 3 to 5 years and 100,000 to 300,000 miles (160,934-482,803 km).

■ Internal components and major engine systems including the turbocharger, water pump and fuel injectors and, new for 2013, the air compressor, fuel pump and select engine sensors

■ Registered parts and labor on covered failures

#### Protection Plan 2

Cummins Internal Protection Plan 2 covers you against major repair costs down the road, with registered parts and labor on major components and your choice of long-term options from 3 to 7 years and 100,000 to 300,000 miles (160,934-482,803 km).

■ Internal components and major engine systems

■ Registered parts and labor on covered failures

### Aftertreatment Extended Coverage\*

Extended coverage is also available for your Cummins Aftertreatment System. Options range from 3 to 5 years and 100,000 to 300,000 miles (160,934-482,803 km).

The coverage includes Cummins-supplied aftertreatment components, including:

■ Diesel Oxidation Catalyst (DOC), Diesel Particulate Filter (DPF) and Selective Catalytic Reduction (SCR) assemblies

■ Diesel Exhaust Fluid (DEF) dosing system

■ Aftertreatment controls

■ Ammonia sensor

\*Protection Plan 1 EPA 2013 of equal duration is required prior to the purchase of the Aftertreatment Extended Coverage.



## NEW PRODUCT WARRANTY



PARTICIPATING OEM SALES  
DISTRIBUTOR SALES

### LIMITED WARRANTY ON NEW ALLISON AUTOMATIC TRANSMISSIONS USED IN ON-HIGHWAY TRUCK APPLICATIONS OTHER THAN AUTOMOTIVE FIRE APPARATUS APPLICATIONS

Allison Transmission, Inc. will provide for repairs or replacement, at its option, during the warranty period of each new Allison transmission listed below that is installed in an On-Highway Truck other than Automotive Fire Apparatus in accordance with the following terms, conditions, and limitations.

#### WHAT IS COVERED

- **WARRANTY APPLIES** — This warranty is for new Allison transmission models listed below installed in an On-Highway Truck other than Line Haul and Automotive Fire Apparatus and is provided to the original and any subsequent owner(s) of the vehicle during the warranty period.
- **REPAIRS COVERED** — The warranty covers repairs or replacement, at Allison Transmission's option, to correct any transmission malfunction resulting from defects in material or workmanship occurring during the warranty period. Needed repairs or replacements will be performed using the method Allison Transmission determines most appropriate under the circumstances.
- **TOWING** — Towing is covered to the nearest Allison Transmission Distributor or authorized Dealer only when necessary to prevent further damage to your transmission.
- **PAYMENT TERMS** — Warranty repairs, including parts and labor, will be covered per the schedule shown in the chart contained in section "APPLICABLE MODELS, WARRANTY LIMITATIONS, AND ADJUSTMENT SCHEDULE."
- **OBTAINING REPAIRS** — To obtain warranty repairs, take the vehicle to any Allison Transmission Distributor or authorized Dealer within a reasonable amount of time and request the needed repairs. A reasonable amount of time must be allowed for the Distributor or Dealer to perform necessary repairs.
- **TRANSMISSION REMOVAL AND REINSTALLATION** — Labor costs for the removal and re-installation of the transmission, when necessary to make a warranty repair, are covered by this warranty.
- **WARRANTY PERIOD** — The warranty period for all coverages shall begin on the date the transmission is delivered to the first retail purchaser, with the following exception:  
**Demonstration Service** - A transmission in a new truck or bus may be demonstrated to a total of 5000 miles (8000 kilometers). If the vehicle is within this limit when sold to a retail purchaser, the warranty start date is the date of purchase. Normal warranty services are applicable to the demonstrating Dealer. Should the truck or bus be sold to a retail purchaser after these limits are reached, the warranty period will begin on the date the vehicle was first placed in demonstration service and the purchaser will be entitled to the remaining warranty.

The warranty period for all coverages shall end at the expiration of the coverage set forth below:

#### APPLICABLE MODELS, WARRANTY LIMITATIONS, AND ADJUSTMENT SCHEDULE

APPLICABLE MODELS	WARRANTY LIMITATIONS (Whichever occurs first)		ADJUSTMENT CHARGE TO BE PAID BY THE CUSTOMER	
	Months	Transmission Miles Or Kilometers	Parts	Labor
MD, HD, 3000, 3200, 3500, 4000, 4500, 4700, 4800, 3000 HS, 4000 HS, 4500 HS, 3000 RDS, 3500 RDS, 4000 RDS, 4500 RDS, 4700 RDS	0-24*	No Limit	No Charge	No Charge
1000 Series, 2000 Series, 2400 Series, 1000, 2100, 2200, 2500, 1000 HS, 2100 HS, 2200 HS, 2350 HS, 2500 HS, 2550 HS, 1000 RDS, 2100 RDS, 2200 RDS, 2350 RDS, 2500 RDS, 2550 RDS, 3000 V, 3000 VR	0-36*	No Limit	No Charge	No Charge

- \* Effective July 2006, the Allison transmission in your vehicle may be covered by additional extended coverage, dependent on the Original Equipment Manufacturer (OEM) which manufactured your vehicle. This additional coverage requires continued use of an Allison Approved TES 295 automatic transmission fluid and genuine Allison filters. Please consult your OEM Dealer or authorized Allison Transmission Distributor or Dealer for specific information.





High-Performance Jet / Vacuum

## Combination Sewer Cleaner

### With Positive Displacement Blower

P Series • VACALL

AllJetVac P Series combination sewer cleaner models use a positive displacement blower system, setting the industry standard for high performance and reliability. The vacuum and jetting systems are powered by the chassis engine - a single-engine advantage that enables municipalities and contractors to open clogged sewer lines and remove debris while also reducing fuel consumption and routine engine service cost and downtime. A range of popular unit sizes and power options are available.

#### FEATURES & BENEFITS



#### Water tanks have lifetime warranty

Water tanks are fabricated with high quality aluminum for extra strength with a lifetime warranty. Tanks are mounted above the rear fenders, reducing the possibility of damage from highway debris, rocks and stones. Tank position also creates positive head pressure to the water pump inlet.

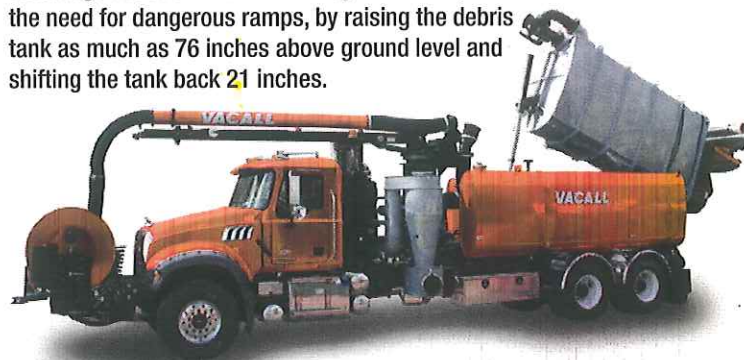
#### AllSmartFlow™ intelligent controls are standard

AllSmartFlow™ is an innovative CAN bus control system, located inside a protective cabinet, allowing operators to efficiently make more precise adjustments in boom movement. The programmable color LCD display provides detailed information about engine performance, water flow and vacuum functions. A fully proportional pendant, either wired or using wireless capability, is designed for productive control away from the chassis.



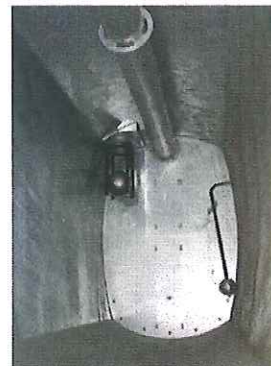
#### High-dump option for efficient debris handling

Discharge material into dewatering containers, without the need for dangerous ramps, by raising the debris tank as much as 76 inches above ground level and shifting the tank back 21 inches.



#### Rugged debris bodies that are built to last

An oval shape with cylindrical sides, top and bottom creates extra strength and efficient material dumping. An optional flush system cleans the entire interior without requiring operator spraying assistance. Powder coat paint creates a heavy-duty, durable finish, while the optional galvanized tanks carry a lifetime warranty.



**VACALL**





### Hose reel rotates into position

Get the jetting action you need, where you need it, with an optional axial pivoting hose reel that can be rotated and easily locked with a flip of a switch into a multitude of positions. The unique, heavy duty reel drive system consists of a rugged planetary gear box driven by a hydraulic motor. The hydraulic motor incorporates a cross port relief valve cushioning system to take the shock load off

the hose reel hydraulics. Thanks to a dual latching system, there are no pin alignment problems common to other machines in the market.



### Telescoping boom puts vacuum power where you need it

The AllJetVac boom, with the standard 8-foot 6-inch telescopic boom, allows you to place the vacuum power where you need it. The boom's rugged design, lift capacity and rotation will have you spending less time handling the tough jobs and repositioning the unit.

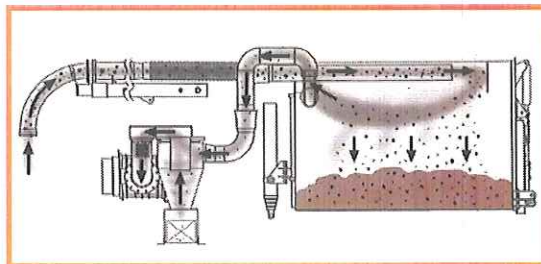
### Options to customize your machine performance

- Decant valves
- Cold water recirculation system
- Emergency hydraulics
- Multiple blower and water pump choices including a proprietary 85 pgm/2000 psi water pump with 30-minute run-dry guarantee



### Tailgate design you'll appreciate

A simple, rugged design with a single control allows the operator to open, close and lock the tailgate. Reverse slope lock wedges actually tighten under the weight of the load. A D-ring gasket and shimmed hinge points create a superior seal and performance.



### Unique filtration system

A multi-stage vacuum filtration system has a simplified design to reduce maintenance, extend performance and increase working life. At the rear of the debris body, material is separated by a deflector plate. Remaining material particles and moisture are removed by a cyclone separator. The filtered air then passes through the blower, the silencer and the exhaust.

## VACALL AJV P Series Models • Basic Specifications

	AJV 0610 P	AJV 0612 P	AJV 0810 P	AJV 0812 P	AJV 1015 P	AJV 1215 P
Debris Tank	6 yard <sup>3</sup>		8 yard <sup>3</sup>		10 yard <sup>3</sup>	12 yard <sup>3</sup>
Water Tanks	1,000 gallons	1,200 gallons	1,000 gallons	1,200 gallons	1,500 gallons	
Hose Reel	Front-mounted, pivoting					
Boom	8'6" extending boom 180° rotation					

Certified ISO 9001 • 6/14

Form No. 11411 (Replaces Form No. 11101) • Printed in U.S.A

Vacall machines are designed and manufactured by Gradall Industries, Inc., a world leader in the production of versatile, reliable maintenance machines. It is our policy to continually improve our products. Therefore, designs, materials and specifications are subject to change without notice and without incurring any liability on units already sold. NOTE: some options shown in pictures.

**VACALL**™

Gradall Industries, Inc. • 406 Mill Ave SW • New Philadelphia, OH 44663  
Phone: (330) 339-2211 • Toll-Free: (800) 382-8302 • Fax: (330) 339-8468  
www.vacallindustries.com

**GRADALL**  
INDUSTRIES, INC.  
Where Ingenuity Works

**A** ALAMO GROUP



# VACALL

## All Jet Vac

P Series



All Jet Vac  
P Series

## SPECIFICATIONS

### BLOWER

**Blower** - Roots 824@16"; 18" Rotary lobe direct drive.  
**Drive** - Direct - OMSI air-shift transfer case.  
**Speed** - 2470 rpm.  
**Blower Vacuum** - 16" hg standard: (217" h2O).  
**Blower Airflow** - 5200 CFM Free Air.

### DEBRIS TANK

**Volumetric Capacity** - 6, 8, 10, 12 cu yd  
**Dump Angle** - 42°.  
**Sides** - ASTM A572 Grd 50 Carbon Steel - 1/4", (.250) x 3/8", (.375).  
**Construction** - Oval shape, cylindrical sides, wrap-around gussets.  
**Lifting** - Hydraulic three-stage telescopic cylinder.  
**Tailgate** - Heavy-duty Rear, full 90°, hydraulically-opening, with dual positive-locking reverse angle wedges.  
**Debris Body Safety Prop** - Manually-operated single prop located on hoist frame near rear axles.  
**Tailgate Safety Prop** - Located outside, beside tailgate driver side.

### CONTROLS

**All Smart Flow Control** - Enclosed cabinet control box containing 12 volt CAN bus boom control joystick recessed for protection. LCD color display to increase/decrease engine RPM, water pressure, vacuum. Emergency stop button, water pump and blower hour meter.  
**Wired pendant** - Wired pendant with 12 proportional push buttons; 3-position rotary switch, latching emergency stop.

### HYDRAULIC SYSTEM

**Hydraulic Pump** - Pressure-compensated piston pump.  
**Capacity** - 40 Gallon.  
**Return Filter** - 10 Micron.

### BOOM

**Diameter** - 8".  
**Front Boom Reach** - 25'.  
**Rotation** - 180°.  
**Work Area** - 552 Sq. Ft.  
**Telescoping** - 8', 6".  
**Capacity** - 1,000 Lbs.

### WATER SYSTEM

**Water Tank Construction** - High-quality, fully-welded aluminum.  
**Water Tank Capacity** - 1,000 or 1,500 Gallons.  
**Pump Type** - Hydraulically-powered triplex plunger.  
**System Flow** - Variable-flow 85gpm @ 2,000 rpm.  
**Hose Reel** - 1" Diameter hose, 800' capacity, direct-drive reel, 230° rotation.  
**Catch Basin Cleaning** - Side-mounted handgun.  
**Filter** - Inlet suction strainer.

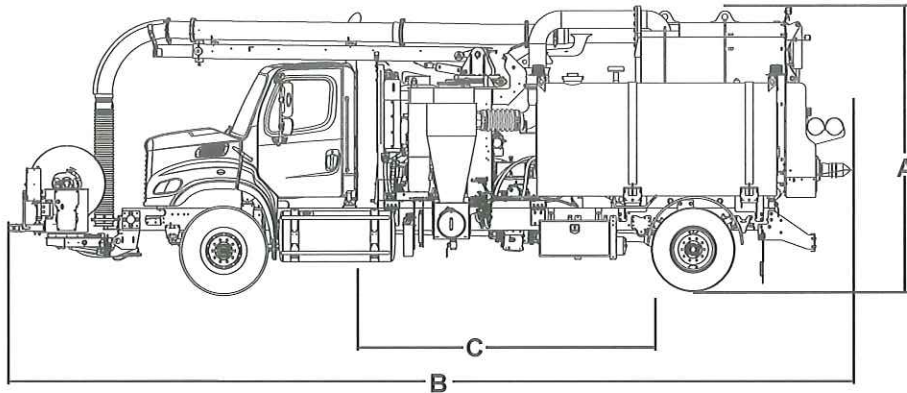
### OPTIONS

**Sludge Pump** - 710 gpm @ 10' head pressure.  
**Lighting** - Strobe, work, directional, corner strobes.  
**Toolboxes/Tube Racks** - Optional Aluminum or Carbon Steel.  
**Lateral Cleaning Reel** - 2-1/2" Y Strainer on fill.  
**Internal Tank Flush** - Optional.  
**Emergency Hydraulics** - Optional Electric 12VDC.  
**Galvanized Debris Tank** - Optional.  
**Cold Weather Recirculation** - Optional Electric 12VDC.  
**Remote Grease Manifolds** - Optional.  
**Air Purge** - Optional.  
**Empty Water/Full Debris Electronic De-rate**  
**Wireless Remote**  
**High Dump**

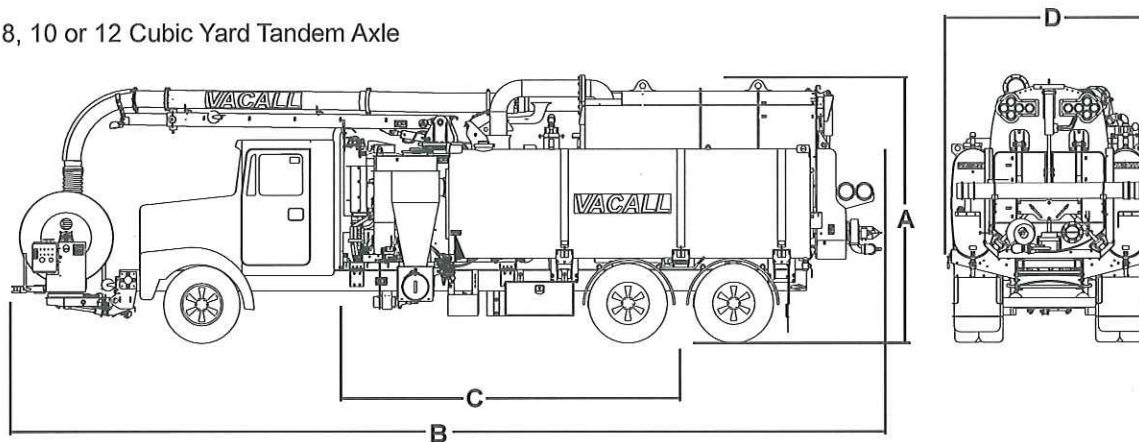
**VACALL**



## 6 Cubic yard Single Axle



## 8, 10 or 12 Cubic Yard Tandem Axle



DIMENSIONS	MACHINE MODEL NUMBERS			
	AJV610	AJV810	AJV1015	AJV1215
A. Overall Height	12'0"	12'0"	12'0"	12'0"
B. Overall Length	35'6"	35'6"	37'9"	38'9"
C. Clear CA Required	167"	167"	184.5"	198.5"
D. Overall Width	8'8"	8'8"	8'8"	8'8"

Certified ISO 9001

Form No. 11511 · Printed in U.S.A. · 3-15

Vacall machines are designed and manufactured by Gradall Industries, Inc., a world leader in the production of versatile, reliable maintenance machines. It is our policy to continually improve our products. Therefore, designs, materials and specification are subject to change without notice and without incurring liability on units already sold. NOTE: some options shown in pictures.

# VACALL

Gradall Industries, Inc. 406 Mill Ave SW New Philadelphia, OH 44663  
 Phone: (330) 339-2211 Toll Free: (800) 382-6301 Fax: (330) 339-8468  
[www.vacall.com](http://www.vacall.com)

 **GRADALL**  
 INDUSTRIES, INC.  
*Where Ingenuity Works*

 **ALAMO GROUP**

License No. SV-2020-00120  
DPS Code: S VA

2020-2022

Not Transferable  
Valid Only at Address Below

# Louisiana Motor Vehicle Commission

This Certifies that

Vacuum Truck Sales & Service, LLC  
9236 Ashland Road  
Gonzales, LA 70737

B.T. Steadman, Dealer-Operator

is duly licensed as a

Specialty Vehicle Dealer

of the following

Conversion(s): Johnston Sweepers, Sewer Equipment Co. of America, VACALL

For the period ending May 31, 2022, unless license is sooner revoked.

In Witness whereof, LOUISIANA MOTOR VEHICLE COMMISSION, under and by virtue of the authority vested in it by the laws of the State of Louisiana, has caused this license to be issued with its seal imprinted hereon.



LOUISIANA MOTOR VEHICLE COMMISSION

Dated June 1, 2020

Signed, Sealed and Attested

Executive Director

(To be prominently displayed in place of business)



License No. SV-2020-00056

2020-2022

Not Transferable

# Louisiana Motor Vehicle Commission

This Certifies that  
William Davis Taylor of Springfield, LA  
has been licensed by this Commission as a  
MOTOR VEHICLE SALESMAN, AUTHORIZED TO SELL SPECIALTY VEHICLES ONLY  
Employed by Specialty Vehicle Dealer Licensee  
SV-2020-00120  
Vacuum Truck Sales & Service, LLC  
9236 Ashland Road  
Gonzales, LA 70737

pursuant to the laws of the State of Louisiana for the period ending May 31, 2022.



Dated June 1, 2020

Louisiana Motor Vehicle Commission

Executive Director

NOTE: This Certificate is to be retained by the Employer.  
It is to be returned by the Employer to the Commission  
Office at 3519 12<sup>th</sup> Street, Metairie, LA 70002, within ten  
days of the termination of the Salesman's employment.

Termination Date:

## Louisiana Motor Vehicle Commission

License No. SV-2020-00056

2020-2022

This is to Certify that  
William Davis Taylor of Springfield, LA  
has been duly licensed by this Commission as a  
MOTOR VEHICLE SALESMAN,  
AUTHORIZED TO SELL SPECIALTY VEHICLES ONLY  
Employed by Specialty Vehicle Dealer Licensee  
SV-2020-00120 Vacuum Truck Sales & Service, LLC  
Gonzales, LA 70737

For the period ending 5/31/2022.

Louisiana Motor Vehicle Commission

Executive Director  
(OVER)

Dated: 6/01/2020