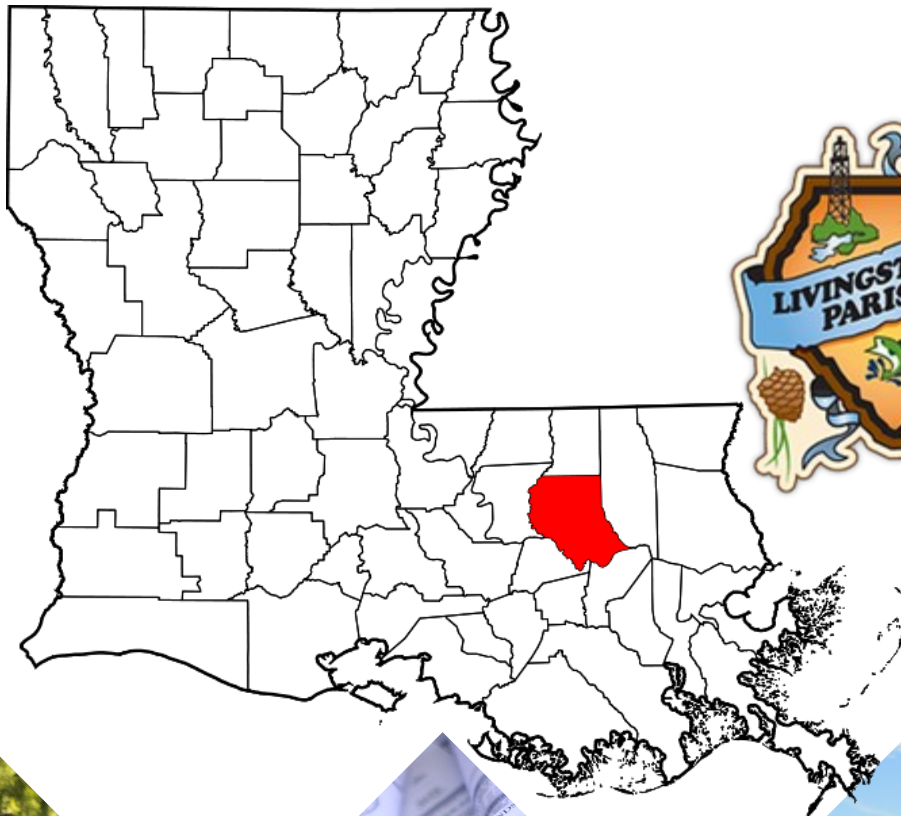




STATEMENT OF QUALIFICATIONS FOR
PINE BLUFF ROAD DRAINAGE IMPROVEMENTS PROJECT
LIVINGSTON PARISH GOVERNMENT
JUNE 5, 2019





June 4, 2019

Heather Crain
Livingston Parish Government
20355 Government Blvd.
Livingston, LA 70454

RE: Livingston Parish Government

Pine Bluff Road Drainage Improvement Project Statement of Qualifications for Engineering Services

Dear Ms. Crain,

Quality Engineering and Surveying, LLC (QES) is pleased to present this statement of qualifications to the Livingston Parish Government in order to provide engineering services for the Pine Bluff Road Drainage Improvements Project.

As this Statement of Qualifications will demonstrate, our team has the required experience with providing engineering and surveying services of numerous state and federally funded projects similar to this project in Livingston Parish. This understanding of Louisiana state and federal grant requirements, as well as previous experience in Livingston Parish, is essential to complete this project on time and within budget.

QES fully understands the scope of work to be performed for the Livingston Parish Government. QES confirms that our firm meets appropriate state licensing requirements in order to practice in the State of Louisiana. Further, we certify that none of our team members have a record of performing substandard work in their field of expertise during their careers and specifically with in the past five years. We can assure the Livingston Parish Government that QES and our team members have the highest ethical standards and would never place any of our clients and companies in an unethical situation. QES confirms that, if awarded the contract, we acknowledge complete responsibility for the entire contract, including payment of all charges resulting from the contract.

Our business model and the creeds by which our team operates allow for all of our clients, public and private, to receive superior performance. This business model will be unified with all of our team members. Furthermore, we provide project managers that are committed to the concept that customer satisfaction throughout the entire process of planning, engineering and surveying of a project leads to future repeat business with our clients. Our experience has proven that ensuring key personnel availability from start to finish of a project leads to cohesive project management and engineering services. Therefore, **ALL** of the team members portrayed in this Statement of Qualifications will play a vital role in the success of the Livingston Parish Pine Bluff Road Drainage Improvement Project.



We acknowledge that if awarded this contract, we will have a complete responsibility for this entire contract, including payment of any and all charges resulting from said contract. We also acknowledge that the Request for Qualifications was issued with no Addenda for this project. Additionally, contained with this Statement of Qualifications package are the following documents:

One (1) Original Statement of Qualifications

Four (4) Copies of the Statement of Qualifications

Our staff members have worked together on numerous projects. We are excited about this opportunity to continue to provide excellent services to Livingston Parish and are enthusiastic about this opportunity to provide superior services that are beneficial to all parties involved!

Sincerely,

Deric J. Murphy, P.E.
Principal Engineer, Owner

TABLE OF CONTENTS

PINE BLUFF ROAD DRAINAGE IMPROVEMENT PROJECT

[SECTION 1]

Introduction

- ◆ Transmittal Letter
- ◆ Summary of Qualifications

[SECTION 2]

Background and Experience

- ◆ History of the Firm
- ◆ References

[SECTION 3]

Specialized Knowledge

- ◆ Project Approach
- ◆ Past Projects

[SECTION 4]

Personnel/Professional Qualifications

- ◆ Professional Experience

[SECTION 5]

Professional Coverage

- ◆ Professional Errors and Omissions Coverage

[SECTION 6]

Financial Statements

- ◆ Balance Sheet
- ◆ Income Statement



Summary of Qualifications

Quality Engineering and Surveying, LLC (QES) is pleased to present this Statement of Qualifications for Livingston Parish Government's Drainage Project with the confidence that we can provide excellent services. In the forthcoming sections, we demonstrate that we have the knowledge and understanding of the design and construction of drainage funded with state and federal dollars, their challenges, and the ability to manage the project on time and within budget. As shown herein, QES is a full service engineering firm with a very high degree of professionalism for providing services to Livingston Parish. Our firms' project managers possess years of experience in Engineering and Design Services, as well as Program Management, for state and federally funded programs. In consideration of our team to provide the required services, we would like to extend the following summary of our qualifications:

Size and Location of the Firm

QES is a planning, engineering, and surveying consulting firm located in Port Vincent, Louisiana. We have performed services for parishes all throughout Louisiana. Collectively, we have 60 professionals and employees with the understanding and ability to provide excellent services to Livingston Parish. These employees offer expertise in each niche of engineering for projects funded with grant monies to allow for review of enhanced designs, plans, profiles, and specifications adequate for achieving the desired goals and expectations of Livingston Parish. QES has been in business for more than 9 years and during this time, we have grown from a one man operation to a fifty person operation. Our philosophy is to employ personnel based upon our current and future workload. We spend the appropriate time when hiring each employee to ensure that we have the perfect collaboration of experience and expertise. Therefore, we have grown into the types of projects that we engage.

Experience in Other Disaster Recovery Activities

Collectively, QES and our team of professionals have been in the consulting, engineering and planning field for more than a century. Our team was founded on the principle that long lasting relationships between team members and our clients are based on our reputation to provide excellent services. In addition to the length of time our firm has been in business, we have principal planners, engineers, and designers that have more than twenty-five years of experience individually. The experience that our firm's team will provide is a perfect match for the needs of Livingston Parish. The abilities of our staff have been demonstrated in every community we have provided services related to state and federally funded grant programs.

Experience With State and Federally Funded Programs

Our team has the experience being sought by Livingston Parish for an engineering consultant for design services and cost estimating for the drainage project. Our team is comprised of professionals that have managed more than *seventy* grant programs throughout the state of Louisiana. QES is not only familiar with federal grant programs, but also with the programs as they pertain to Livingston Parish. Our project managers already have established contacts with the GOHSEP employees assigned to the Parish. Mr. Jamie Seal, serving as the project manager of this project, has ten years of experience working with state entities, municipal, and parish governments. As the project manager for these entities, he has worked to implement drainage improvement projects, residential acquisition, elevation and reconstruction, Infrastructure retrofit, drainage projects, and hazard mitigation plan updates and amendments.



Experience in Environmental and Regulatory Programs

QES has had a longstanding relationship with Elos Environmental, LLC (ELOS). We have joined forces on numerous occasions for a combined 10 years experience in Plaquemines Parish, St. Mary Parish, St. Martin Parish, as well as Livingston Parish. ELOS will provide a complete environmental review and assessment if necessary. ELOS offers a diverse range of environmental services designed to satisfy our clients' needs. Members of the professional staff have extensive direct expertise with both the Federal and Louisiana wetland regulatory programs. ELOS is certified in Louisiana as a Small and Emerging Business Enterprise (SEBD) under the Hudson Initiative (Cert. #11198). ELOS is expert in regulatory affairs related to environmental permitting and compliance. ELOS's environmental professionals provide data-supported analysis to federal, state, and local agencies along with private clients in order to secure environmental clearances, permits, and authorizations as required by the National Environmental Policy Act (NEPA), Sections 404 and 401 of the Clean Water Act, Section 10 of the Rivers and Harbor Act, and Section 14 of the Rivers and Harbor Act as codified in 33 USC 408 (Section 408) for modifications to federal projects, and Section 106 of the National Historic Preservation Act.

Experience With State and Federally Funded Programs

Mr. Seal has also been involved in familiarizing parishes and their constituents with state and federal planning requirements as well as viable projects. When necessary, we have participated in public meetings to help educate people of the community about potential funding for projects addressing community concerns. Some of these projects are listed and shown in this proposal.

Capacity to Perform the Work

QES has a professional staff of approximately 60 people that are dedicated to providing exceptional services to our clients to ensure maximum satisfaction with services being received. For this project, 17 people will be dedicated full-time with the support of other employees as needed. Our knowledge of state and federally funded programs in the state of Louisiana allows us to provide services needed to ensure that the scope can be met and work will be completed within the period of performance. In addition to our professional engineers, our program managers will be available to assist as subject matter experts on federally funded projects to ensure that the projects being implemented meet the technical needs of Livingston Parish, as well as the guidelines of the grant program.

Knowledge of FEMA's Requirements for the Hazard Mitigation Grant Program

QES has vast knowledge of and experience with FEMA's HMGP funded projects. We have worked on HMGP projects in 23 Parishes throughout Louisiana and our employees have worked on HMGP projects in an additional 13 Parishes. Not only have we been on the engineering design side of the project, we have also been Program and Grant managers for several projects. We have the unique opportunity to have seen all sides of the project and to bring knowledge to Livingston Parish.

Knowledge of GOHSEP Hazard Mitigation Assistance (HMA) programs

QES has worked closely with GOHSEP on several of our previous and current projects. We have strong relationships with GOHSEP employees and understand the time constraints in pushing projects forward and how to facilitate this.

Professional Accomplishments

Our team of qualified personnel has secured and executed more than \$100 Million in grant management funded projects. Our staff has worked on the design and grant management for a multitude of projects and locations including public infrastructure, commercial and residential projects, pump station design, and wastewater sewer projects. We are very experienced with drainage-flood mitigation projects, H&H studies, and BCA analysis through FEMA.



Knowledge of FEMA's Requirements for the Hazard Mitigation Grant Program

QES has vast knowledge of and experience with FEMA's HMGP funded projects. We have worked on HMGP projects in 23 Parishes throughout Louisiana and our employees have worked on HMGP projects in an additional 13 Parishes. Not only have we been on the engineering design side of the project, we have also been Program and Grant managers for several projects. We have the unique opportunity to have seen all sides of the project and to bring knowledge to Livingston Parish.

Knowledge of GOHSEP Hazard Mitigation Assistance (HMA) programs

QES has worked closely with GOHSEP on several of our previous and current projects. We have strong relationships with GOHSEP employees and understand the time constraints in pushing projects forward and how to facilitate this.

Professional Accomplishments

Our team of qualified personnel has secured and executed more than \$100 Million in grant management funded projects. Our staff has worked on the design and grant management for a multitude of projects and locations including public infrastructure, commercial and residential projects, pump station design, and wastewater sewer projects. We are very experienced with drainage-flood mitigation projects, H&H studies, and BCA analysis through FEMA.

QES Certifications

QES is a certified by Louisiana Economic Development as a Small and Emerging Business Enterprise.



History of the Firm

Founded in early 2009, Quality Engineering & Surveying, LLC, (QES) is a full service firm that offers an extensive range of services for both private and public sectors. Our multi disciplinary approach provides our clients the opportunity to procure our services in: Engineering, Landscape Architecture, Planning, Land Surveying, and Program Management. Our knowledge and experience has helped us establish strong business relationships with our clients in both the private and public sector in more than 1/3 of the parishes in the state of Louisiana. Customer service is key and a mainstay for QES. This has been integral to our success and has expedited our growth as a firm. Our licensed and support staff of engineers, surveyors, grant specialists, landscape architects, and planners provides the expertise, professionalism, and innovative approaches fundamental to the execution of successful design solutions.

From the past and current client relationships we have fostered, our clients have been presented with the unique opportunity to have access not only to our staff, but also to the network of professional partners we have accumulated during our years of service. Outside of providing primary services to our clients, we have teamed with Architects, Engineering Firms, Land Planners and Landscape Architects to further compliment the quality services we offer to our clients. So whether it be our firm alone or as a collaborative effort with our partners, QES has helped to define for our clients what they need to make their projects successful.

QES's daily operations are managed by Deric J. Murphy, P.E.. Deric received his Bachelor's Degree in Civil Engineering from Louisiana State University in 1996 and obtained his Professional Engineering License in 2001. He has since concentrated on the land development industry, including involvement in hundreds of successful public and private projects. Deric enjoys meeting the unique challenges that each project presents, enabled by his ability to listen to and appreciate each client's individual needs. Deric applies his expertise and experience to ensure complete customer satisfaction.

Mr. Jamie Seal, CFM has served as a project manager and mitigation specialist for mitigation programs throughout the state of Louisiana. He has worked with parishes all over Louisiana to implement Hazard Mitigation Grant Program Funds. Over the past thirteen (13) years, Mr. Seal has overseen and assisted in the preparation and implementation of mitigation projects throughout numerous parishes affected by Hurricanes Katrina, Rita, Gustav, Ike, Isaac and the 2016 Flood. He assisted in developing business plans to build response and recovery groups. Mr. Seal has also supervised a staff of seven engineers and additional administrative support staff to create Benefit Cost Analyses and Reports for hazard mitigation projects. He has vast knowledge of the requirements of FEMA 404/406 mitigation as well as FEMA's annual mitigation funding programs. He provides the ability to manage projects in a timely manner. He has been responsible for creating and implementing actions to educate homeowners and elected officials throughout the State of Louisiana about FEMA's Hazard Mitigation Program.

Legal Name:

*Quality Engineering &
Surveying, LLC*

Expertise:

*Civil & Structural
Engineering*

Established:

2009

DUNS #:

834321148

FEDERAL TAX ID #:

26-4396984



[REFERENCES]

Plaquemines Parish Government

Attn: Ken Dugas

106 Avenue G

Belle Chasse, LA 70037

(504) 297-5000

Services Utilized: Planning, Grant Administration, Project Management, Civil Design, Surveying, H&H Studies



St. Mary Parish Government

Attn: Henry "Bo" Lagrange

500 Main St., 5th Floor

Franklin, LA 70538-6198

(337)828-4100

Services Utilized: Planning, Grant Administration, Project Management, Application Development, Civil Design, Surveying, H&H Studies



Livingston Parish Gravity Drainage District #1

Attn: Wesley Kinnebrew

8114 Florida Blvd

Denham Springs, LA 70726

(225) 664-5827

Services Utilized: H&H Studies, Surveying, Drainage, Retrofit, Civil Design & Analysis, Planning, Program Administration



St. Martin Parish Government

Attn: Heath Babineaux

301 West Port Street

St. Martinville, LA 70582

(337)394-2200

Services Utilized: Grant Administration, Project Management, Application Development, Program Compliance, Public Outreach, Financial Reporting, Document Control



Tangipahoa Parish Government

Attn: Robby Miller

P.O. Box 215

Amite, LA 70422

(225) 635-3861

Services Utilized: Grant Administration, Project Management, Application Development, Program Compliance, Public Outreach, Financial Reporting, Document Control



PINE BLUFF ROAD DRAINAGE
IMPROVEMENT PROJECT
SECTION 2



To whom it may concern:

Within the past six months, St. Martin Parish Government has awarded three different projects to Quality Engineering and Surveying. The Stephenville Safe Room, the St. Martin Office of Emergency Preparedness Safe Room, and the Breaux Bridge Manor Drainage Improvement Project are currently being designed by QES. These projects are funded through FEMA Hazard Mitigation Management Program (HMGP). The two safe rooms are being designed to meet FEMA 361 to withstand 200 mph rated wind impact. The drainage project is being designed to investigate and propose, through hydraulic and hydrology reports, solutions to drainage flooding in localized areas in Breaux Bridge.

The engineer, Deric J. Murphy, is responsible for the design of these projects; Mr. J. Seal is the project manager for all three projects. To date, the design of these projects has been very successful with his cooperation and understanding of the HMG Program. Mr. Seal has worked directly with me and our project administrator at the Shaw Group on these particular projects. Although these projects are partially complete, we are very pleased with the progress of all three of these projects. The Stephenville Safe Room was designed to 90% plans well within the time constraints of the project. The budget for the project was exceeded due to site constraints and concerns. However, the QES team worked together with the project administrator to compile the Benefit Cost Analysis to provide the appropriate funding for the project. The other two projects are in early preliminary design phases and should be completed within the time constraints that we have set forth with their current schedule.

With regards to the project management and with very intimate knowledge of the FEMA Hazard Mitigation Grant Program, I am very pleased with the work effort and attentiveness that Quality Engineering and Surveying has portrayed on all of the projects that are currently being designed. In particular, J. Seal serves St. Martin Parish well with project management ensuring that we are included in all design criteria and also taking into consideration any parameters that we have set forth for each of these projects. His knowledge of the HMG program as well as coordination with the project administrator to complete this project on time and within budget has been impeccable. Therefore, I would highly recommend Quality Engineering and Surveying and Mr. Seal for any future work similar to these projects.

Guy Cormier
Parish President

Post Office Box 9
301 West Port Street
St. Martinville
Louisiana 70582
337.394.2200
Fax 394.2203

Sincerely,



Calder Hebert



LIVINGSTON PARISH GRAVITY DRAINAGE DISTRICT 1

June 21, 2017

To whom it may concern:

Livingston Parish Gravity Drainage District No. 1 has awarded Quality Engineering & Surveying, LLC many different projects in the past few years. In regards to topographic surveys, boundary surveys, and engineering design, QES has performed beyond expectations. LPGDD1 hired QES to evaluate the existing Gray's Creek drainage systems' capacity and conditions in order to develop a cost-effective improvement plan for the Gray's Creek Watershed. QES surveyed the Gray's Creek Watershed, which spans 29.22 square miles with the main channel measuring 18.67 miles long. They performed the tasks quickly and provided updates and data on a bi-monthly basis. They also provided an H&H Study and model, which we now use to monitor improvement impacts.

Mr. Deric Murphy, the principal engineer at QES, has been a responsive and knowledgeable asset to the LPGDD1. His company has provided exceptional services in surveying and engineering with a reasonable associated cost.

The LPGDD1 would highly recommend Mr. Murphy and Quality Engineering's services to anyone seeking professional services.

Sincerely,



Felicia Terral

Livingston Parish Gravity Drainage District No. 1



8114 Florida Blvd
Derham Springs, LA
70726-7865

PHONE (225) 664-5827
FAX (225) 791-3831
E-MAIL lp added1@con.net



PROJECT APPROACH—DRAINAGE

Phase I

Kickoff and Assessment

Upon receiving notification of the project award, our staff will immediately begin the process to schedule a kick-off meeting. Our team of experienced mitigation specialists and project managers will work closely with the administration and all departments of the Parish to evaluate and verify the necessary funds are available for completion of each phase of the project. This will include comparison of preliminary cost estimates coupled with engineering design requirements resulting in final cost estimates. The project managers will also inform Parish staff and officials regarding ongoing time schedules for each phase. This will take into account the Grant's Period of Performance in an effort to continually remain within project time constraints. Lastly, we will affirm that engineering design will meet or exceed the scope of work as defined.

H&H Study & Analysis

Under the direction of our engineering staff, survey crews will be sent into the area to obtain information necessary to build a hydraulic model of the area. The model will determine how the flows and runoff of the area to ensure that the culverts proposed in the design are adequately sized.

Engineering Design

We expect to move aggressively to complete full plans and specifications for the drainage project. We will communicate with the Parish addressing issues and questions throughout the process to ensure that Livingston's needs are being met. Meetings will be held at intervals which are marked by milestones in the project or as the project manager finds advantageous.

30% Plans and Specifications

Gathering the investigative documents will allow for us to build a foundation of the project in order to achieve all applicable permits and regulations for the project. The next task within the design phase will be to present Livingston Parish with 30% plans which will include schematic design documents illustrating the general scope, scale and relationship of the project components. We will meet with all stakeholders to ensure that all goals will be met during construction. Any products that will be unique to the facility will also be presented to the Parish and stakeholders.

60% Plans and Specifications

Upon completion of the Preliminary Design, we will make the requested modifications and recommendations. This in turn will allow for us to evaluate the project in order to provide an estimate of probable costs. While working on the estimated costs, we will incorporate all changes and modifications that have been expressed by the client. During this phase, we will design the project in its entirety including construction plans and preliminary design specifications for the site and building. At the conclusion of this phase of the project, we will again meet with Parish staff and members to provide these documents as well as an estimated cost of construction.

90% Plans and Specifications

With any final revisions from the meeting regarding the plans, specifications or estimated cost of construction, we will proceed to applying for any applicable permits. Typically, permits that are required Section 404, Wetland Delineation and Army Corps of Engineer permit, along with others



that may be required depending on site conditions and FEMA requirements. Upon completion of this phase of the project, all permitting and approvals will be sought. This time period may need adjustment if any permit is delayed from governmental agencies and not by the QES team. However, QES & Elos will expedite any permits or applications by responding promptly to any requests for additional information or revisions to plans or specifications.

100% Plans and Specifications

The last stage of the Plan Development stage of the project is to complete the front end contractual documents for bidding purposes. In addition, a final estimate for construction will be completed and provided to Livingston Parish. QES will coordinate with the Parish on placing the project construction out for contractor's bid.

Phase II

Construction Bid Step

Upon approval of the final design plans, specifications, and final cost estimate, our team of experienced professionals will assist the Parish with developing advertisements for the bidding process ensuring all local, state, and federal procurement laws and practices are implemented. We will ensure that all necessary staff are available to attend the preliminary and final bid meetings to address concerns and questions raised by qualified, state-licensed contractors. Our team will ensure effective communication between all parties throughout this process to guarantee that all qualified firms are able to provide adequate bid information.

At closing of the advertisement process, we will conduct the process of receiving bids. After receiving bids, we will be able to provide the Parish with an analysis of bids received and showing comparison of all bid tabulations in a simplified format. Using this data, our team of professional engineers will provide a recommendation to the Parish of the most qualified contractor for the project.

Construction & Administration Step

Our construction management team will be available during the construction phase of the project as well as our grant writers, surveyors, and design team. Our team of qualified and experienced professionals will provide periodic inspections to ensure standards identified in the specifications and traditional construction processes are being used appropriately. We will meet with all stakeholders during the construction process to discuss timeliness of the project, while addressing concerns and issues as they develop.

Our team will review for accuracy and approve all contractor payment applications that will be needed to process payments to the contractor in a timely manner. Our team will ensure that all work completed qualifies for payment and has been completed according the plans and specifications of the project. Upon completion of construction and approval of all punch list items, we will provide the Parish a certificate of acceptance of the project documentation needed to release and retainers that may be on record.

To finalize this project our team will remain available to Livingston Parish to complete close-out of this project. Our staff will remain available to assist with any subsequent consultation meetings, assisting with review of payment applications for financial reimbursement and start-up of the building. A complete set of reproducible "As-built" plans will be provided to the parish to close-out this process.



SPECIALIZED KNOWLEDGE

QES works with a wide variety of clients and is capable of handling complex projects for all entities seeking engineering design services. Our firm repeatedly provides valuable services to clients with great levels of professional quality work.

Below is a map of locations of the projects that QES has been responsible for throughout Louisiana. Specific to this project, QES has a vast knowledge of HMGP funded projects with experience in all aspects of the program. We are confident that we can provide Livingston Parish Government with services that out-perform expectations and services provided by firms in the past.

Private Industry

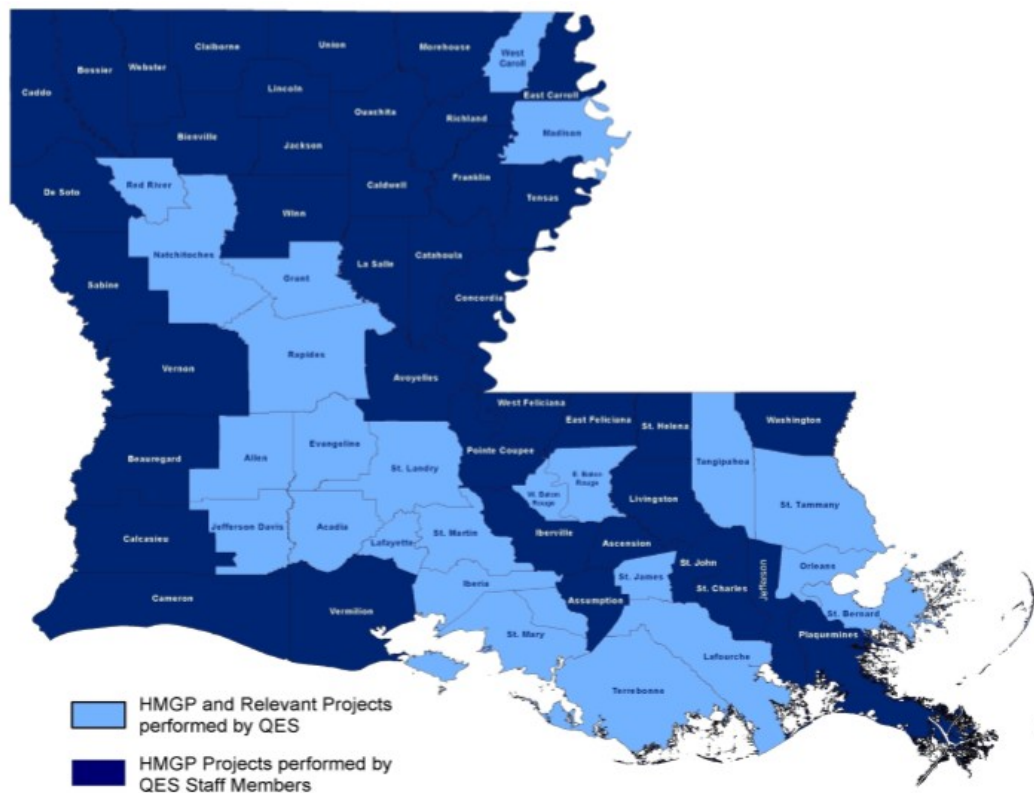
- DR Horton
- America Homeland, LLC
- Level Construction & Development, LLC
- Circle K
- Domino's

Local Government Agencies

- St. Mary Parish Government
- St. Martin Parish Government
- Ascension Parish Government
- East Baton Rouge Parish Government

Other Government Agencies

- Louisiana Department of Wildlife & Fisheries
- Baton Rouge Metropolitan Airport
- Louisiana Department of Transportation and Development
- Livingston Parish Gravity Drainage District #1



RELEVANT PROJECT EXPERIENCE

Project Name	Project Description	Client	Project Date
Bayou Portage Guidry Drainage Program	Topographic Survey Civil Design Drainage Improvement HMGP	St. Martin Parish Government	May 2020
Ethel Street Drainage Improvement Project	Topographic Survey Civil Design HMGP Hydraulic & Hydrologic Study & Analysis	City of Tallulah	July 2017
Breaux Bridge Manor Drainage Improvement Project	Topographic Survey Floodplain Management Civil Design Roadway Construction Administration Drainage Permitting HMGP Hydraulic & Hydrologic Study & Analysis	St. Martin Parish Government	Spring 2018
Gray's Creek Drainage Improvement Project	Topographic Surveying Hydraulic & Hydrology Study Analysis HMGP	Livingston Parish Gravity Drainage District #1	May 2016
Wallace Acres Drainage Improvement Project	Topographic Survey Drainage Analysis Hydraulic & Hydrologic Study & Analysis HMGP	Ascension Parish Government	June 2020
Jesuit Bend Drainage Improvement Project	Hydraulic & Hydrology Study & Analysis Civil Design (Drainage and Roadway) Permitting Construction Layout HMGP	Plaquemines Parish Government	December 2019

[RELEVANT PROJECT EXPERIENCE]

Project Name	Project Description	Client	Project Date
David Drive Drainage Improvement Project	Topographic Survey Civil Design Drainage Improvement HMGP Hydraulic & Hydrologic Study & Analysis	Tangipahoa Parish Government	May 2020
Skinner Drive Drainage Improvement Project	Topographic Survey Civil Design Drainage Improvement HMGP Hydraulic & Hydrologic Study & Analysis	Tangipahoa Parish Government	May 2020
River Road Drainage Improvement Project	Topographic Survey Civil Design Drainage Improvement HMGP Hydraulic & Hydrologic Study & Analysis	Tangipahoa Parish Government	May 2020
Boudreaux Street to Gilmore Drainage Improvement Project	Grant Management Hydraulic & Hydrologic Study & Analysis Civil Design Drainage HMGP	St. Mary Parish Government	August 2019

Bayou Portage Guidry Drainage Project

COMPLETION DATE

May 2020

INVOLVEMENT

- ◆ Deric J Murphy, PE, LSI
- ◆ Jamie Seal, CFM
- ◆ William Purser, PE
- ◆ Jeff Loup, PE
- ◆ Evgeny Khandoga, EI
- ◆ Seth Mosby, PLS

During recent years flooding has been problematic in the City of Breaux Bridge. The watershed in this area is prone to flash flooding. This flooding has impacted the Hospital, various residential neighborhoods, including Breaux Bridge Manor Apartments and others. Bayou Portage Guidry is located near Auguillard Road in the City of Breaux Bridge.

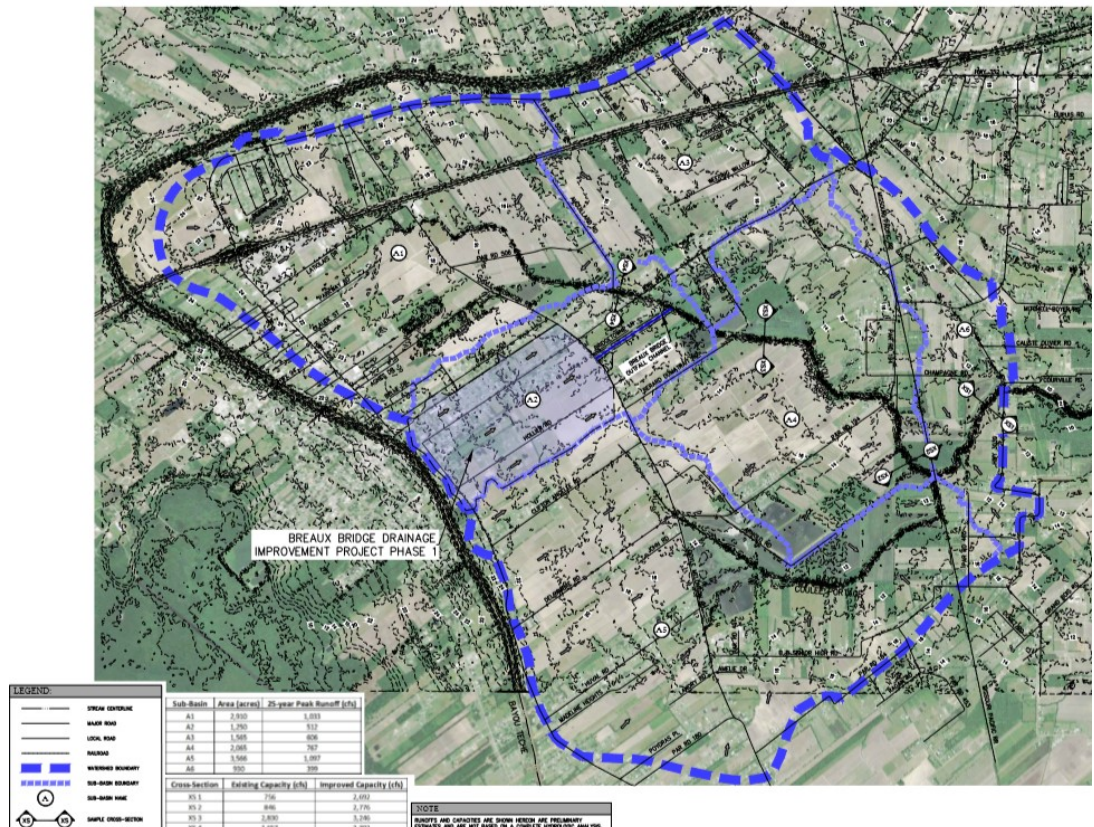
Approximately eight watersheds discharge into Bayou Portage. Due to limited flow capacity of Bayou Portage Guidry, backwater flooding has intensified on each of the channels discharging into the bayou. QES helped St. Martin Parish secure nearly \$4.5 Million dollars in HMGP grant funding to increase conveyance in the channel that will provide protection to the City of Breaux Bridge and Unincorporated Portions of St. Martin Parish.

PROJECT HIGHLIGHTS

Topographic Survey
Civil Design
Drainage Improvement
HMGP
Hydrologic Study & Analysis

REFERENCE CONTACT

Heath Babineaux
St. Martin Parish
301 West Port Street
St. Martinville, LA 70582
(334)394-2200



City of Tallulah Ethel Street Drainage Project

COMPLETION DATE

July 2017

INVOLVEMENT

- ◆ Deric J Murphy, PE, LSI
- ◆ Jamie Seal, CFM
- ◆ William Purser, PE

In the City of Tallulah, Ethel Street has numerous storm events in which flooding of the neighborhood occurs. The original drainage system consisted of a series of drainage ditches supported by culverts under the roadway intersections, sidewalks and driveways. In many locations along the 2,000 feet of Ethel Street, the drainage ditches do not have positive outfall into Panola Bayou. Quality Engineering & Surveying, LLC was selected to provide a Hydraulic and Hydrologic Study to determine a solution to the drainage problems in the area. In addition, it appears as though subsurface drainage systems located near Ethel Street were not being used to maximum capacity.

PROJECT HIGHLIGHTS

Topographic Surveying
Civil Design
Drainage Improvement
HMGP
Hydraulic & Hydrologic Study
and Analysis



REFERENCE CONTACT

Mayor Gloria Hayden
City of Tallulah
204 North Cedar St.
Tallulah, LA 71282
318-574-0964



Breaux Bridge Manor Drainage Improvement Project

COMPLETION DATE

APRIL 2018

Breaux Bridge Manor Apartment Complex lies near the intersection of Highway 347 and Doyle Melancon Road. An existing drainage ditch lies south of most of the developed area. This ditch carries drainage from the developed area to the outfall east of Doyle Melancon Road. With our firm's in-house surveying capabilities, we performed surveys and field verification of drainage concern. We included wetland scientist to provide us with an environmental review of areas affected by the proposed upgrades along the drainage route. Upon completion of the preliminary assessment and the Hydraulic and Hydrologic Study, we provided the parish a preliminary design complete with plans, specifications and an engineer's cost estimate.

INVOLVEMENT

- ◆ Deric J Murphy, PE, LSI
- ◆ Jamie Seal, CFM

SERVICES PROVIDED

Topographic Survey
Floodplain Management
Civil Design
Roadway
Construction Administration
Drainage
Permitting
HMGP
Hydraulic & Hydrologic Study

REFERENCE CONTACT

Heath Babineaux
St. Martin Parish Government
301 West Port Street
St. Martinville, LA 70582
(337)394-2200



Gray's Creek Drainage Improvement Project

COMPLETION DATE

May 2016

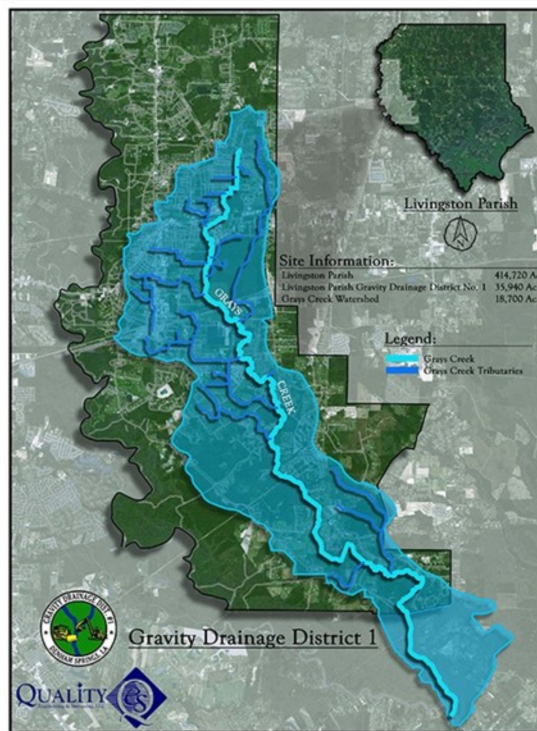
INVOLVEMENT

- ◆ Deric J. Murphy, PE, LSI
- ◆ Jamie Seal, CFM
- ◆ George McCallum
- ◆ Gage Spell, LSI

Quality Engineering and Surveying, LLC was selected to provide surveying and engineering service to improve drainage for Gray's Creek in Livingston Parish. At approximately eighteen (18) mile, Gray's Creek is the largest drainage project to be undertaken in Livingston Parish. Quality Engineering & Surveying, LLC utilized five full time survey crews, staff, and professional engineers over the span of 3 months to develop a retainage system to reduce the effect of inland flooding in Livingston Parish. The scope of the land surveying work was to collect field data on Gray's Creek Crossings and tributary intersections for purpose of developing HECRAS model. Some of the field data included cross sections adjacent to crossings, cross section upstream of crossing (50' for culvert crossing; 300' for bridge crossing).

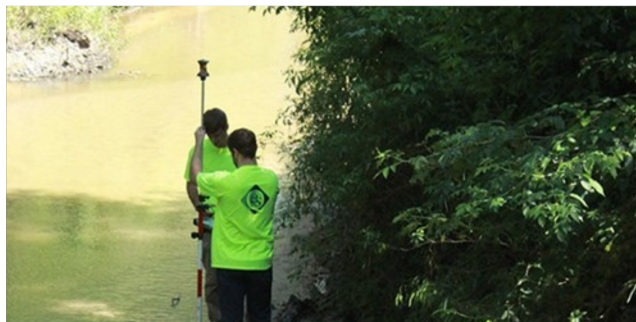
SERVICES PROVIDED

Topographic Survey
Civil Design
Public Outreach
Hydraulic & Hydrologic Survey and Analysis



REFERENCE CONTACT

Wesley Kinnebrew
Livingston Parish
Drainage District #1
8114 Florida Blvd.
Denham Springs, LA 70726
(225)664-5827



Wallace Acres Drainage Improvement Project

COMPLETION DATE

January 2020

INVOLVEMENT

- ◆ Jamie Seal, CFM
- ◆ Deric J. Murphy, PE, LSI
- ◆ Evgeny Khandoga, EI
- ◆ George McCallum

Quality Engineering and Surveying worked on drainage improvements for Wallace Acres Subdivision in Ascension Parish. Due to flooding issues that have been accruing in Wallace Acres Subdivision, QES was tasked to analyze existing drainage systems that consisted of cross-drain culverts, driveway culverts, grate inlets, roadside ditches, and rear yard ditches and come up with a possible solution to resolve the issue.

The survey crew had to complete topographic survey of the entire subdivision that included, inverts of every culvert, cross-sections of existing ditches, as well as locations of existing utilities, mailboxes, and fences. After the topographic survey was completed and processed, drainage analysis had to be done to identify problematic areas and to ensure that the proposed drainage system is adequate and can carry existing flows. With the support of the hydrologic software HydroCAD, construction plans were created with proposed improvements that covered culvert replacements, ditch regrading, erosion control, quantities, and standard plans for installation.

PROJECT HIGHLIGHTS

Hydraulic and Hydrology Study
and Analysis
Civil Design
Drainage
Roadway
Permitting
Construction Layout
HMGP

REFERENCE CONTACT

Bill Roux
Director Parish Public Works
42077 Churchpoint Rd.
Gonzales, LA 70737
(225) 450-1013



Jesuit Bend Drainage Improvement Project

COMPLETION DATE

December 2019

Quality Engineering & Surveying, LLC will provide professional services to Plaquemines Parish to improve drainage in the area of Jesuit Bend on LA Highway

The proposed project will improve drainage by allowing water to convey from the east side of LA Hwy 23 to the west side to the existing drainage system.

INVOLVEMENT

- ◆ Deric J. Murphy, PE, LSI
- ◆ Jamie Seal, CFM

This is a crucial project to Plaquemines Parish since flooding would occur due to the highway acting as a levee, floodwaters would pond over the road surface making it impossible for traffic to pass. In addition to flooding along the highway, a railway would incur damages on an annual basis due to the water not being able to run-off properly.

SERVICES PROVIDED

Hydraulic and Hydrology Study
and Analysis
Civil Design
Drainage
Roadway
Permitting
Construction Layout
HMGP



REFERENCE CONTACT

Ken Dugas, P.E.
Plaquemines Parish
Government
102 Avenue "G"
Belle Chasse, LA 70037
(504)297-5349



West David Drive Drainage Improvement Project

COMPLETION DATE

May 2020

INVOLVEMENT

- ◆ Deric J Murphy, PE, LSI
- ◆ Jamie Seal, CFM
- ◆ William Purser, PE
- ◆ Jeff Loupe, PE
- ◆ Evgeny Khandoga, EI
- ◆ Gage Spell, EI LSI
- ◆ Seth Mosby, PLS, PS

The neighborhood of West David Drive in Tangipahoa Parish frequently experiences severe flooding. Elevation at the center line of West David Drive is at 44 ft. According to the FEMA Flood Insurance Rate Map, the site is in flood zone AE. The base flood elevation for the site is 45.5 ft. Surface water flows from properties directly into the existing subsurface drainage system that is located on each side of the road and then carries it to the outfall ditch. The newly paved roadway has no noticeable slope and water has no visible path to the roadside drop outlets. In addition, outfall culverts are half filled with direct and dense vegetation.

Quality Engineering & Surveying, LLC was selected to complete a hydrologic study and provide plans for the installation of a new subsurface system along West David Drive, cleaning of outfall ditches and regrading of the pavement to the appropriate slope. Funding for this project was acquired from 2016 Floods HMGP.



PROJECT HIGHLIGHTS

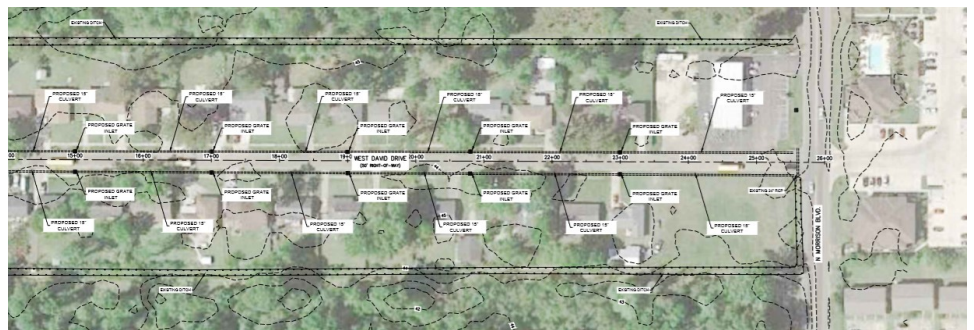
Topographic Surveying

Civil Design

Drainage Improvement

HMGP

Hydraulic & Hydrologic Study
and Analysis



REFERENCE CONTACT

Robby Miller
Tangipahoa Parish Government
P.O. Box 215
Amite, LA 70422
(225) 635-3861



Skinner Drive Drainage Improvement Project

COMPLETION DATE

May 2020

INVOLVEMENT

- ◆ Deric J Murphy, PE, LSI
- ◆ Jamie Seal, CFM
- ◆ William Purser, PE
- ◆ Jeff Loupe, PE
- ◆ Evgeny Khandoga, EI
- ◆ Gage Spell, EI, LSI
- ◆ Josh Ory
- ◆ Seth Mosby, PLS, PS

Skinner Drive is located in the Green Acres Subdivision in south Tangipahoa Parish. The elevation at Skinner Drive is 39.5 ft. The purpose of this project is to provide solutions for drainage issues along Skinner Drive. The area is located in Flood Zone X according to the FEMA Flood Insurance Rate Map with base elevation for the site at 42.3 ft.

The surface water has historically sheet flowed from properties directly on the road which carried it towards the outfall location. The outfall is located at the north-east corner of the subdivision, where runoff water collects in the grate inlet and gets taken away to the existing channel

A hydrologic model was developed to simulate the rainfall-runoff process within the drainage basin. The National Resources Conservation Service (NRCS) TR-55 Method was employed as the loss rate method, and the NRCS Travel-Time Method was used to calculate times of concentration. Green Acres Subdivision doesn't have any drainage structures to carry the water. All of the runoff sheet flows along the curbing of the road towards the outfall. Existing vegetation on the curbing obstructs current path to the outfall. The road is crowned at the center, making it harder for water to cross the street at the intersections with adjacent streets (Charles Dr., Beckie Dr., Claire Dr.)

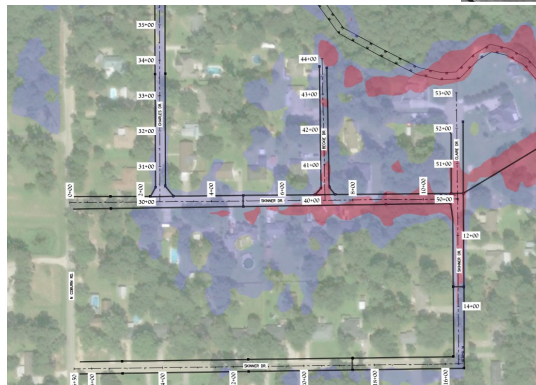
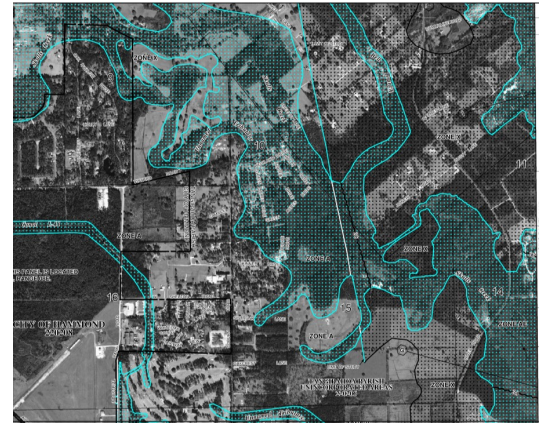
Quality Engineering & Surveying, LLC was selected to provide a hydrologic study and develop plans for the installation of a new subsurface system along the street to provide a clear path to the outfall location.

PROJECT HIGHLIGHTS

- ◆ Topographic Surveying
- ◆ Civil Design
- ◆ Drainage Improvement
- ◆ HMGP
- ◆ Hydraulic & Hydrologic Study and Analysis

REFERENCE CONTACT

Robby Miller
Tangipahoa Parish Government
P.O. Box 215
Amite, LA 70422
(225) 635-3861



River Road

Drainage Improvement Project

COMPLETION DATE

May 2020

INVOLVEMENT

- ◆ Deric J Murphy, PE, LSI
- ◆ Jamie Seal, CFM
- ◆ William Purser, PE
- ◆ Jeff Loupe, PE
- ◆ Evgeny Khandoga, EI
- ◆ Gage Spell, EI, LSI
- ◆ Seth Mosby, PLS, PS

PROJECT HIGHLIGHTS

Topographic Surveying

Civil Design

Drainage Improvement

HMGP

Hydraulic & Hydrologic Study
and Analysis

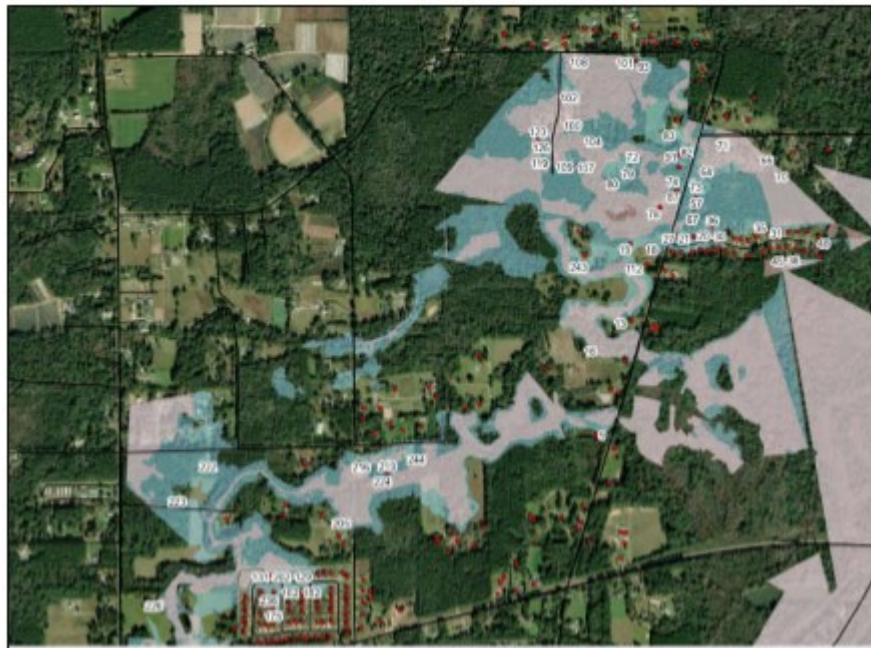
REFERENCE CONTACT

Robby Miller
Tangipahoa Parish Government
P.O. Box 215
Amite, LA 70422
(225) 635-3861

River Road is a local road in city of Ponchatoula, Tangipahoa Parish. It is located north of Highway 22, just west of the Tangipahoa River. It serves as the access road to Country Rivers Subdivision and multiple homes along River Road. There are two ditches that cross the road and outfall into the Tangipahoa River. Ditch one is located approximately 2,000 feet away from Highway 22 intersection, it utilizes 2-42" CMP culverts to cross the road. Ditch two is located approximately 2,800 feet away from Highway 22 and uses 1-36" CMP culvert.

The centerline of River Road ranges between elevations of 16.5' to 17.0'. During the 10-year storm events and higher, both locations of cross-drains get backed up by Tangipahoa River causing the water to get out of banks of the ditch flooding in the area and inundating River Road. The observed affected area is located north of Louisiana Highway 22 near and along River Road in Tangipahoa Parish, Louisiana. It is understood that the impacted area contains approximately seventy-two (72) single family residences, 52 of which will have no form of outlet once the area is inundated.

To address flooding issues existing cross-drain culverts are proposed to be replaced with 72" RCP culverts with back flow preventers as well as raising the road approaches to the crossing locations. These improvements will reduce flooding to neighborhoods around and west of River Road and north of Highway 22 while also reducing the roadway flooding problem on River Road.



Boudreaux Street to Gilmore Dr Drainage Improvement Project

COMPLETION DATE

August 2019

INVOLVEMENT

- ◆ Deric J Murphy, PE, LSI
- ◆ Jamie Seal, CFM

PROJECT HIGHLIGHTS

- ◆ Floodplain Management
- ◆ Hazard Mitigation
- ◆ Drainage
- ◆ Retrofit
- ◆ Residential

SERVICES PROVIDED

Assisted with grant
management services

Hydraulic and Hydrology
Study and Analysis

Civil Design

Drainage

Roadway

Permitting

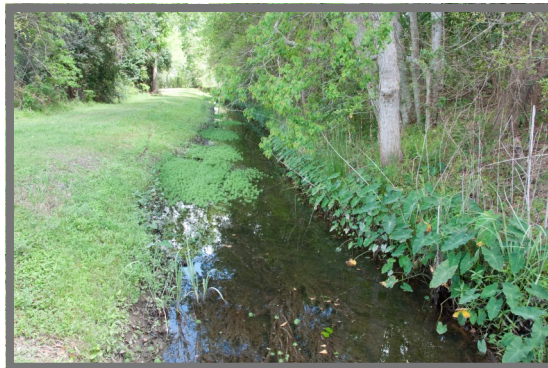
Construction Layout

REFERENCE CONTACT

Henry "Bo" Lagrange
St. Mary Parish Government
500 Main Street
Franklin, LA 70538
(337)828-4100

The Boudreaux Street to Gilmore Drive Drainage Improvements project will convert an 1,117 lineal feet earthen ditch into a subsurface drainage system that back-up and causes water to pond in a residential subdivision in which houses flood on a regular basis. In addition to drainage structures, additional pumps will be installed at the existing pump station to increase pumping capacity of the existing station.

The project includes working with residents to determine what happens with drainage during rain events; completing surveying and hydraulic and hydrology studies; development of construction plans, bids and specifications. Resident inspection services during construction are also being performed.



RELEVANT PROJECT EXPERIENCE

Project Name	Project Description	Client	Project Date
Iberville Parish Alligator Bayou Drainage and Backwater Flood Reduction	Environmental Review Record Comprehensive Environmental Compliance Review Needs/Justifications Documentation Environmental Assessment Checklist Public Notice	Iberville Parish Government	2017
Plaquemines Parish Jesuit Bend Drainage	Data Collection Wetland Mapping Technical Document Preparation Regulatory Agency Coordination	Plaquemines Parish Government	2017
Livingston Parish Restore Act Matching Opportunities Assistance	Data Collection and Analysis GIS Mapping Project Coordination and Monitoring Grant Application and Management	Livingston Parish Government	2020
Plaquemines Parish Mid-Breton Sediment Diversion Project Jurisdictional Determination & Habitat Analysis	Threatened & Endangered Species Review Habitat Characterization Wetland Mapping	Plaquemines Parish Government	2018
Plaquemines Parish New Orleans to Venice—Non-Federal Levees	Threatened & Endangered Species Surveys Habitat Characterization Wetland Mapping Environmental Impact Analysis Draft Environmental Assessment Wetland Value	Plaquemines Parish Government	2020
Tangipahoa Parish Breakwater Project	Wetland Mapping Regulatory Compliance Benefits Analysis Project Coordination and Monitoring Grant Management Documentation	Tangipahoa Parish Government	2020

Iberville Parish Alligator Bayou Drainage and Backwater Flood Reduction

COMPLETION DATE

Consulting Services — 100%
Complete

INVOLVEMENT

- ◆ Lucas Watkins
- ◆ Brian Fortson
- ◆ Flynn Daigle

PROJECT HIGHLIGHTS

- ◆ Finding of No Significant Impact (FONSI)
- ◆ Approved Request for Release of Funds (RROF)

SERVICES PROVIDED

- ◆ Environmental Review Record
- ◆ Comprehensive Environmental Compliance Review
- ◆ Needs/Justifications Documentation
- ◆ Environmental Assessment Checklist
- ◆ Public Notice

REFERENCE CONTACT

J. Mitchell Ourso
Iberville Parish Government
58050 Meriam Street
Plaquemine, LA 70764

ELOS provided environmental assessment services for improvements to the water control structure at Alligator Bayou and Bayou Manchac in Iberville Parish. Iberville Parish Government received HMGP funds to replace the existing culverts, automate the floodgate, install communications and auxiliary power equipment, and construct a boat ramp and parking pad for access to the bayou for maintenance in order to reduce backwater flooding in the Spanish Lake Basin. The scope of work charged ELOS with developing the Environmental Review Record (ERR) in accordance with Housing and Urban Development (HUD) Community Development Block Grant (CDBG) rules coordinated by the Office of Community Development-Disaster Recovery Unit (OCD-DRU).

ELOS prepared documentation including a comprehensive environmental compliance review, justification for activities within the floodplain (8-step process), Environmental Assessment Checklist, and public notices. The National Environmental Policy Act (NEPA) process concluded with a Finding of No Significant Impact (FONSI) and Request for Release of Funds (RROF) allowing Iberville Parish to proceed with final engineering and construction. ELOS also secured the jurisdictional determination (JD) for the project, prepared the Section 404/10 application, responded to public comments, and submitted a Scenic Stream Permit.



Plaquemines Parish

Jesuit Bend Drainage

COMPLETION DATE

Consulting Services — 100% Complete

INVOLVEMENT

- ◆ Lucas Watkins
- ◆ Brian Fortson
- ◆ Flynn Daigle

PROJECT HIGHLIGHTS

- ◆ USACE Jurisdictional Determination
- ◆ USACE Letter of No Objection
- ◆ Coastal Use Permit Exemption Letter

SERVICES PROVIDED

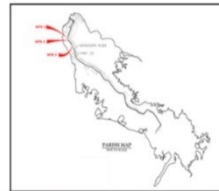
- ◆ Data Collection
- ◆ Wetland Mapping
- ◆ Technical Document Preparation
- ◆ Regulatory Agency Coordination

REFERENCE CONTACT

Jeffrey Burst
HNTB Corporation
10000 Perkins Rowe
Baton Rouge, LA 70810

Plaquemines Parish and its Engineering Consultant tasked ELOS with the environmental evaluation of a wide-area local drainage improvement project involving the maintenance and replacement of culvert crossings under Louisiana Highway 23, and the installation of sub-surface drainage infrastructure south of Belle Chasse, Louisiana. ELOS was contracted to provide all services required for a formal jurisdictional determination from the USACE, and the coordination of all environmental permitting for the project.

This project primarily involved science and technical staff from ELOS who conducted field investigations, data collection, wetland mapping, technical document preparation and regulatory agency coordination for both the determination and permitting process. ELOS received a Preliminary Jurisdictional Determination from the Department of the Army Operations Division, Surveillance and Enforcement Section, a Coastal Use Permit Exemption Letter for from the Department of Natural Resources, Office of Coastal Management, a No Objection Letter from the Department of the Army Operations Division, Operations Manager, and a NOD-22 Permit from the Department of the Army Operations Division, Eastern Evaluation Section.



Livingston Parish Restore Act Matching Opportunities Assistance

COMPLETION DATE

Consulting Services — 80%
Complete

INVOLVEMENT

- ◆ Lucas Watkins
- ◆ Brian Fortson
- ◆ Flynn Daigle
- ◆ Jesse McQuigg

PROJECT HIGHLIGHTS

- ◆ Damage Survey Reports
- ◆ Needs and Justification Documentation

SERVICES PROVIDED

- ◆ Data Collection and Analysis
 - ◆ GIS Mapping
 - ◆ Project Coordination and Monitoring
 - ◆ Grant Application and Management
-

ELOS assisted Livingston Parish in preparing grant application documentation for watershed drainage improvements projects proposed by the Parish. ELOS addressed documentation of the needs and justification for funding the project as well as assisting in providing best practice recommendations for completing the project.

ELOS has continued work with the Parish during implementation of the project by providing Damage Survey Reports (DSR) to determine areas in greatest need of debris removal services. To produce the needed reports and documentation, ELOS professionals collect field data and utilize GIS data analysis to provide Parish and Natural Resource Conservation Service personnel with professional recommendations to assist in decision making and allocation of funds to areas in most need of debris removal. Thus far, ELOS has surveyed and provided DSR documentation for approximately 400 miles of waterways and tributaries throughout Livingston Parish.



Plaquemines Parish

Mid-Breton Sediment Diversion Project

Jurisdictional Determination & Habitat Analysis

COMPLETION DATE

Consulting Services — 100%
Complete

INVOLVEMENT

- ◆ Lucas Watkins
- ◆ Brian Fortson
- ◆ Flynn Daigle
- ◆ Maria Bernard Reid

PROJECT HIGHLIGHTS

- ◆ Wetland Delineation Report
- ◆ Habitat Analysis Model

SERVICES PROVIDED

- ◆ Threatened and Endangered Species Review
- ◆ Habitat Characterization
- ◆ Wetland Mapping

REFERENCE CONTACT

Thomas Cancienne, PE, PMP
Stantec Consulting Services,
Inc.

1340 Poydras Street, Suite
1420

New Orleans, LA 70037

(504) 654-1726

ELOS was contracted to conduct a Jurisdictional Determination and complete a desktop habitat analysis for approximately 26,985 acres of possible delta-influences area within the proposed Mid-Breton Sediment Diversion outfall area in Plaquemines Parish, Louisiana. ELOS used publicly available data to quantify marsh acreage and distinguish marsh types within the proposed outfall area, including: infrared aerial photographs, LIDAR data, USGS hydrologic unit code water data, NRCS soil survey, USFWS National Wetlands Inventory maps, and Louisiana Coastwide Reference Monitoring Systems (CRMS) Wetlands monitoring data. ELOS compiled all data into a report that described freshwater forest/shrub wetland, freshwater marsh, intermediate marsh, brackish marsh, salt marsh, and open water habitats and their respective acreages. A map delineating the habitats and acreages was included in the report.



Plaquemines Parish New Orleans to Venice—Non-Federal Levees

COMPLETION DATE

Consulting Services — 100%
Complete

INVOLVEMENT

- ◆ Lucas Watkins
 - ◆ Brian Fortson
 - ◆ Flynn Daigle
-

PROJECT HIGHLIGHTS

- ◆ USACE Jurisdictional Determination
 - ◆ Wetland Value Assessment Model
 - ◆ Permittee Responsible Mitigation Planning
-

SERVICES PROVIDED

- ◆ Threatened and Endangered Species Surveys
 - ◆ Habitat Characterization
 - ◆ Wetland Mapping
 - ◆ Environmental Impact Analysis
 - ◆ Draft Environmental Assessment
 - ◆ Wetland Value
-

REFERENCE CONTACT

Jeffrey Burst
HNTB Corporation
10000 Perkins Rowe
Baton Rouge, LA 70810

ELOS was under contract to conduct environmental reviews to satisfy the NEPA obligations for a drainage system improvement project for the USACE and Plaquemines Parish Government (PPG) between La Reussite and West Pointe a la Hache. Tasks performed have included T&E surveys, delineations and assessments of jurisdictional wetlands, habitat characterizations, and environmental impact analyses. The team prepared a draft Environmental Assessment (EA) and ran the Wetlands Value Assessment model (WVA) to calculate Average Annual Habitat Units (AAHUs) to be used in the mitigation process. This work was rolled into the Supplemental EA #537 for the NOV-NFL. Subsequently, ELOS was contracted by PPG to prepare the Section 404/10 permit application and calculate mitigation using the Louisiana Rapid Assessment Methodology (LRAM) for mitigation assessment. ELOS also assisted with general mitigation evaluation, agency coordination services, and general mitigation consulting.

Tasks under this project have included routine conversations with the U.S. Army, Corps of Engineers (Corps) and other State and Federal agencies to discuss potential mitigation sites, periodic meetings with the Parish, the Corps and/or other State and Federal agencies to discuss NOV and NFL levee mitigation issues, data collection and input solicitation from the Corps and other State and/or Federal agencies concerning potential mitigation banks/ individual mitigation projects, providing draft correspondence for Plaquemines Parish regarding Parish-suggested mitigation options, research into Parish responsibilities should the final mitigation bank or individual mitigation project be given to the Parish for long-term operation and providing general mitigation consulting regarding the MCM.



Tangipahoa Parish Breakwater Project

COMPLETION DATE

Consulting Services — 80%
Complete

INVOLVEMENT

- ◆ Lucas Watkins
- ◆ Brian Fortson
- ◆ Flynn Daigle
- ◆ Maria Bernard Reid

PROJECT HIGHLIGHTS

- ◆ Wetland Delineation Report
- ◆ Interactive Web Application w/Data

SERVICES PROVIDED

- ◆ Wetland Mapping
 - ◆ Regulatory Compliance
 - ◆ Benefits Analysis
 - ◆ Project Coordination and Monitoring
 - ◆ Grant Management Documentation
-

ELOS is assisting Tangipahoa Parish in environmental compliance needs for the design and implementation of its Breakwater project. The project involves the continuation of an existing breakwater, rock jetty project along the shoreline of Lake Pontchartrain on the southern end of Tangipahoa Parish. ELOS has been assisting Tangipahoa Parish in consultation and coordination of use of State and federal Restore Act funds to provide cost estimates, design services, preparation of construction plans and bid coordination, site surveying, and construction inspection services as related to environmental compliance. All data and photos collected by ELOS personnel were uploaded into an interactive web application provided to the Parish for use in public outreach regarding the success of the project. Due to the success of the project, ELOS is continuing to provide professional environmental consulting services as the extent of the project has been expanded by the Parish. Specific services have included: wetland delineations and surveys, environmental compliance documentation and permitting, and benefit analysis.

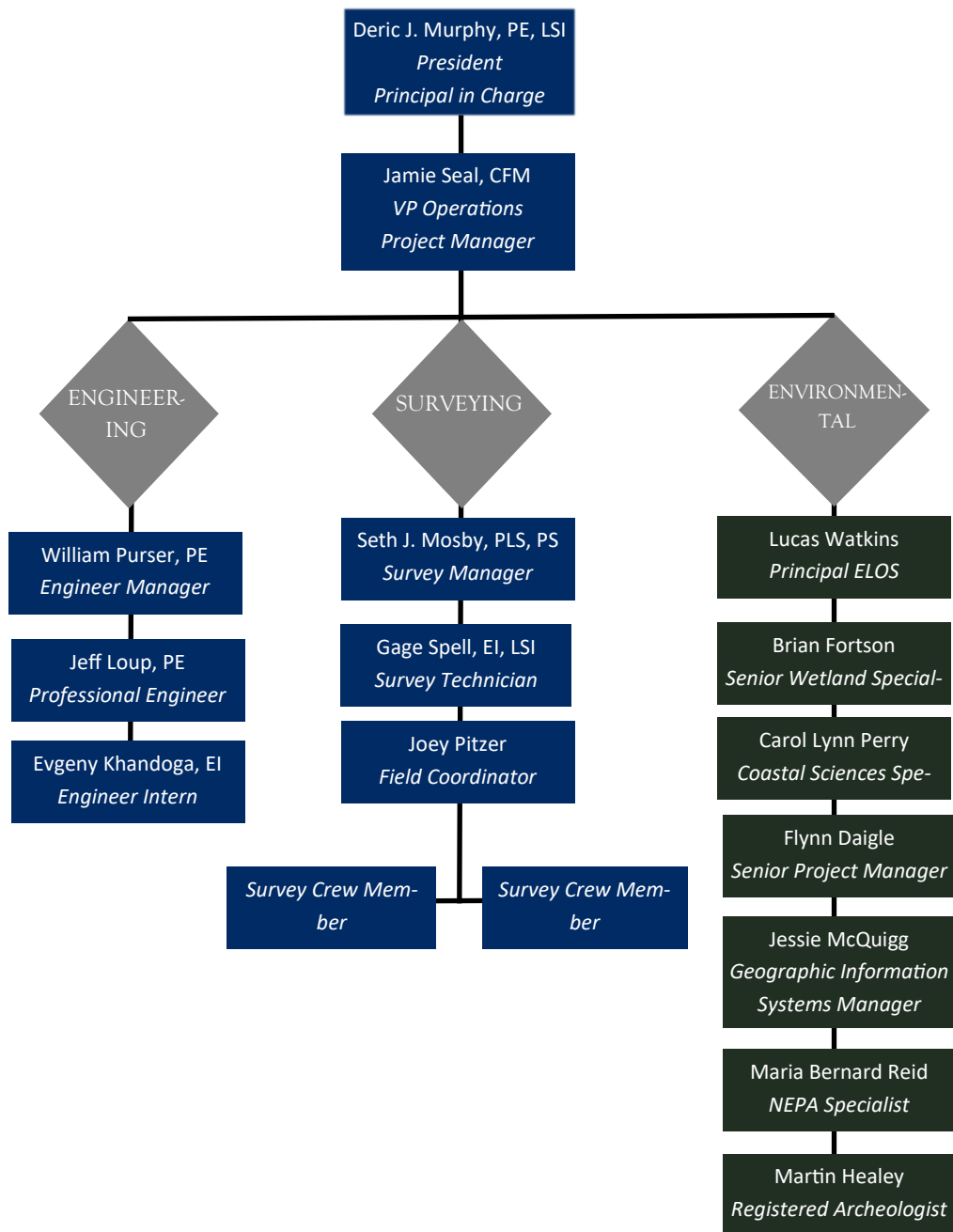


PROJECT PERSONNEL

QUALITY
Engineering & Surveying, LLC



PINE BLUFF ROAD DRAINAGE
IMPROVEMENT PROJECT
SECTION 4



Deric J. Murphy, PE, LSI

PRINCIPAL IN CHARGE

EDUCATION

Louisiana State University—
Bachelor of Science in
Civil Engineering

REGISTRATIONS

Professional Engineer
Louisiana No. 29602

Professional Engineer
Mississippi No. 27232

Land Surveyor Intern
Louisiana No. 427

EXPERIENCE

This Firm	9.0 Years
Total	20.0 Years

Deric Murphy is a graduate of Louisiana State University, receiving his Bachelor's degree in Civil Engineering in 1996, and receiving his Professional Engineering License in 2001. Since then, he has concentrated on serving the land development industry. He has designed, drafted and managed hundreds of projects ushering them from conceptual design to completion. He has represented projects at planning commission and parish council meetings. His experience includes design, supervision and general coordination of sub-consultants for various civil and municipal projects as well as the preparation of detailed construction plans, reports, technical specifications, contract documents, bid packages, cost estimates, hydraulic calculations and field studies. The types of projects he has been associated with include commercial and retail facilities, new sewer systems, highways, drainage and storm water improvements, pump station design, residential subdivisions and construction phasing plans. His experience in working one on one with the client and local governing agencies allows him to provide quality projects, thus ensuring that each one meets or exceeds even the most stringent timelines and budgets.

Breaux Bridge Manor Drainage Improvements

QES was selected to complete the studies and design of the Breaux Bridge Manor Drainage Improvement project. The project will remove an existing box culvert that is set at the wrong elevation along Doyle Melancon Road in Breaux Bridge, LA. A larger culvert will replace the existing culvert and will be set at the appropriate elevation to ensure proper conveyance of water in the drainage area.

Ethel Street Drainage Project

Quality Engineering & Surveying was selected to provide engineering service to improve drainage in the Ethel Street area of the City of Tallulah. During hard rain events the streets are overtopped with water and residential structures flood. This project required completing a study of 45 acres and will be a substantial overhaul of the existing drainage structures to protection to resident up to a 25 year event.

St. Mary Parish - Boudreaux St. to Gilmore Dr. Drainage Improvements

Mr. Murphy is the Principal Design Engineer on this project. His role included civil site design and project oversight. The Boudreaux Street to Gilmore Drive Drainage Improvements project will convert a 1,117 lineal feet earthen ditch into a subsurface drainage system that backs- up and causes water to pond in a residential subdivision in which houses flood on a regular basis.

President
(p): 225-698-1600
(f): 225-698-3367
dmurphy@quesla.com



Jamie Seal, CFM

SENIOR PROJECT MANAGER

EDUCATION

Southeastern Louisiana
University—Bachelor of
Business Administration

REGISTRATIONS

Certified Floodplain Manager
US-07-02732

Louisiana Floodplain Manager
Association

Association of State Floodplain
Managers

Natural Hazards Mitigation
Association

Louisiana Emergency
Preparedness Association

EXPERIENCE

This Firm	5.0 Years
Total	15.0 Years

Mr. Jamie Seal has secured more than \$100 Million dollars in state and federal related program funds over the past nine years. Mr. Seal has overseen and assisted in the preparation and implementation of mitigation projects, including over 80 winds retrofit and safe room projects, throughout numerous parishes. He has vast knowledge of the requirements of state and federal funding. He has overseen operations of engineers, planners, drafting, and GIS departments. His experience and tenure on projects within the state and federal funding arena allows for him to be the Project Manager on this project responsible for all interaction with the Parish and Project Administrator. He provides the knowledge and insight to propel projects from conception and preliminary design, through final design and construction of the final project. In the past, he has maintained good working relationships with Project Administrators and Parish officials to ensure that compliance and completeness of each project are successful.

Grays Creek Drainage Improvements, Livingston Parish

Mr. Seal was the Project Manager for this project and handled all client and public relations. QES was selected to provide surveying and engineering services for a drainage improvement project for Gray's Creek. At approximately eighteen (18) miles, Gray's Creek is the largest drainage project to be undertaken in Livingston Parish history. QES utilized three (3) full time survey crews and staff and professional engineers to develop a retainage system to reduce the effect of inland flooding in Livingston Parish.

Jesuit Bend Drainage Improvements, Plaquemines Parish

Mr. Seal was the Project Manager for this project and handled all client and public relations. QES was selected by Plaquemines Parish to provide hydraulic and hydrology study and analyses for improvement of drainage to Jesuit Bend at LA Hwy 23. With the study and analysis complete Mr. Murphy is currently coordinating permitting and construction efforts to alleviate drainage restrictions that created an environment susceptible to severe flooding during storm events.

Breaux Bridge Manor Drainage Improvement

QES provided preliminary H&H studies to provide recommendations for drainage improvements in the Berwick area of St. Mary Parish. Once complete with recommendations, QES will engineer and design the drainage improvements to an existing earthen channel of 1,711 linear feet and existing culverts to a proposed subsurface drainage system to properly drain the areas of flooding in the area.

Vice President, Operations
(p): 225-698-1600
(f): 225-698-3367
jseal@qesla.com



William Purser, PE

SENIOR ENGINEER

EDUCATION

Bachelor of Science—Civil
Engineering

REGISTRATIONS

Professional Engineer
Louisiana No. 29357

EXPERIENCE

This Firm	5.0 Years
Total	22.0 Years

Mr. Purser has twenty years of increasing responsibility in Civil Engineering and Public Works projects in Tennessee, Mississippi, Louisiana, Texas, and Alabama. Mr. Purser demonstrates excellent skills in engineering, project design, cost estimation, and working within tight budgets and timelines. As an experienced project manager, he has been responsible for seeing multiple projects through from initial surveys and planning to final bid and completion. Mr. Purser has extensive experience across core civil engineering disciplines of roadway/transportation, drainage, water line, and site design.

Grays Creek Drainage Improvements, Livingston Parish

Mr. Purser is the Senior Engineer on this project. His role includes overseeing the drainage study and recommendations. QES was selected to provide surveying and engineering services for a drainage improvement project for Gray's Creek. At approximately eighteen (18) miles, Gray's Creek is the largest drainage project to be undertaken in Livingston Parish. QES utilized three (3) full time survey crew and staff and professional engineers to develop a solution to reduce the effect of inland flooding in Livingston Parish.

Audubon Bridge, West Feliciana Parish, LA

Mr. Purser was the Civil Engineer on this project with a previous employer. Provided design and analysis of storm drainage for the preliminary designs for the two and four lane roadways as well as final design for the two-lane roadway. Also, provided and designed culverts for the temporary construction road. Designed the relocation of the water line at the intersection of the new roadway with U.S. 61.

Boudreaux to Gilmore Drainage Improvements, St. Mary Parish

Mr. Purser is the Senior Engineer on this project. His role includes overseeing the drainage study and recommendations. The Boudreaux Street to Gilmore Drive Drainage Improvements project will convert a 1,117 lineal feet earthen ditch into a subsurface drainage system that backs-up and causes water to pond in a residential subdivision in which houses flood on a regular basis.

Breaux Bridge Manor Drainage Improvements

Mr. Purser is the Senior Engineer on this project. His role includes overseeing the drainage study and recommendations. QES was selected to complete the studies and design of the Breaux Bridge Manor Drainage Improvement project. A study of 603 acres was completed. The project will remove an existing box culvert that is set at the wrong elevation. A larger culvert will replace the existing culvert and will be set at the appropriate elevation to ensure proper conveyance of water in the drainage area.

Engineering Department Manager

(p): 225-698-1600

(f): 225-698-3367

wpurser@qesla.com



Jeff Loup, PE

CIVIL ENGINEER

EDUCATION

Louisiana State University—
Bachelor of Science Civil
Engineering

REGISTRATIONS

Professional Engineer
Louisiana No. 31277

EXPERIENCE

This Firm	5.0 Years
Total	15.0 Years

Mr. Loup has experience in project management, design, and construction engineering in a wide variety of civil engineering projects that will benefit Livingston Parish. These projects have involved design and construction administration of: state highways and other public roadways, off-system bridges, drainage canal improvements, storm drainage systems, detention ponds, water system expansions and improvements, sewer treatment plants, pumping stations, force mains and collection systems, earthwork, and erosion control. Mr. Loup also has experience in the approval process for COE 404 permits, DEQ WPS-g permits for sewer treatment plants, DHH permits for sewer and water systems, DOTD permits for driveways, road bores and construction within state rights-of-way, boundary surveys and ALTA/ASCM survey maps. Mr. Loup has trained several engineering interns and drafting technicians in preparing plans, specs and cost estimates. He has demonstrated exceptional ability in the areas of resource coordination and client communications.

Grays Creek Drainage Improvements, Livingston Parish

QES was selected to provide surveying and engineering services for a drainage improvement project for Gray's Creek. At approximately eighteen (18) miles, Gray's Creek is the largest drainage project to be undertaken in Livingston Parish. QES utilized three (3) full time survey crew and staff and professional engineers to develop a solution to reduce the effect of inland flooding in Livingston Parish.

Florida Avenue Bridge Over the Inner-Harbor Navigational Canal, East B.R. Parish

Mr. Loup was the Civil Engineer on this project with a previous employer. As an Engineer Mr. Loup performed technical reviews and coordinated with LADOTD on the vertical and geometric design for the elevated roadway, ramps, and approaches to the high-rise bridge; The project included highway and bridge design, intersection design, utility relocation, drainage, and coordinating with several specialty consultants.

Breaux Bridge Manor Drainage Improvements

QES was selected to complete the studies and design of the Breaux Bridge Manor Drainage Improvement project. A study of 603 acres was completed. The project will remove an existing box culvert that is set at the wrong elevation. A larger culvert will replace the existing culvert and will be set at the appropriate elevation to ensure proper conveyance of water in the drainage area.

Engineer
(p): 225-698-1600
(f): 225-698-3367
jloup@qesla.com



Evgeny Khandoga, EI

ENGINEER INTERN

Mr. Khandoga graduated from Louisiana State University in 2016 with a Bachelor of Science degree in Civil Engineering. He joined Quality Engineering and Surveying team not long after graduation as an Engineer Intern. Although he is new to the engineering profession, he has extensive experience that allows him to work effectively and deliver high-quality service to every client. At QES, he is involved with civil construction plans production, project cost estimates, municipal projects that involved drainage analysis and drainage improvements, and reviews and evaluates 3rd party engineering documents.

EDUCATION

Louisiana State University—
Bachelor of Science Civil
Engineering

REGISTRATIONS

Professional Engineer
Louisiana No. EI. 0046138

EXPERIENCE

This Firm	3 Years
Total	3 Years

Wallace Acres

QES worked on drainage improvements for Wallace Acres Subdivision in Ascension Parish. Due to flooding issues that have been accruing in Wallace Acres Subdivision, QES was tasked to analyze existing drainage systems that consisted of cross-drain culverts, driveway culverts, grate inlets, roadside ditches, and rear yard ditches and come up with a possible solution to resolve the issue. The survey crew had to complete topographic survey of the entire subdivision that included, inverts of every culvert, cross-sections of existing ditches, as well as locations of existing utilities, mailboxes, and fences. With the support of hydrologic software HydroCAD, construction plans were created with proposed improvements that covered culvert replacements, ditch regrading, erosion control, quantities, and standard plans for installation.

Grays Creek Drainage Improvements, Livingston Parish

QES was selected to provide surveying and engineering services for a drainage improvement project for Gray's Creek. At approximately eighteen (18) miles, Gray's Creek is the largest drainage project to be undertaken in Livingston Parish. QES utilized three (3) full time survey crew and staff and professional engineers to develop a solution to reduce the effect of inland flooding in Livingston Parish.

Livingston Parish Drainage District - LPGDD#1

LPGDD#1 is the governmental operation located in Denham Springs, LA. The Drainage District was created to open and maintain all-natural drains in the district, where drainage is accomplished using the force of gravity. This may be accomplished by cutting and opening new drains, ditches, and canals. The Drainage District is governed by a board of commissioners consisting of nine (9) members of the parish council who represent any portion of the Wards. Quality Engineering and Surveying has a retainer contract with Livingston Parish Drainage District to conduct all surveying and engineering services.

Engineer Intern
(p): 225-698-1600
(f): 225-698-1367
ekhandoga@quesla.com



Seth J. Mosby, PLS

PRINCIPAL LAND SURVEYOR

EDUCATION

Bachelor of Science in General Studies—Louisiana State University

REGISTRATIONS

Professional Land Surveyor
Louisiana No. 5073

Professional Surveyor

Mississippi No. 30078

EXPERIENCE

This Firm	1.0 Years
Total	8.5 Years

Mr. Mosby is a recent graduate of Louisiana State University and is currently pursuing professional licensure as a Registered Land Surveyor, Notary Public and Real Estate Agent. Mr. Mosby enjoys 8.5 years of experience in land surveying and related fields. He has worked on variety of commercial, residential, municipal, industrial, transportation, and right-of-way projects. His experience includes both office and field time. Mr. Mosby has experience using several widely used computer software packages including but not limited to Microsoft Office, AutoCAD, Land Development Desktop, Eagle Point and GIS application internet sites. With his experience he has produced plats (including but not limited to boundary, topographic, as-built, ALTA/ACSM and right-of-way acquisitions), legal descriptions, elevation certificates and quantity calculations. He has served as crew coordinator and Head Survey Technician as well. His office experience also includes courthouse research for legal descriptions, deeds, plats and other pertinent documents for all types of projects. In the field he is experienced in all types of land surveys including elevation, boundary, subdivision, topographic, route, right-of-way, and as-built surveys as well as construction staking for clearing, drainage, sewer and roadway construction. He has experience with Topcon, Sokkia and Nikon manual and robotic total stations. He also has experience with Trimble, Topcon and Sokkia GPS technologies. Mr. Mosby also has experience using multiple types of field data collectors utilizing SMI, TDS and Carlson Survey Plus.

Ward 2 Water Waterline Expansion, Livingston Parish, LA.

Mr. Mosby served as field crew supervisor for a 10 mile water line expansion along LA-Highway 16 and LA-Highway 447. The project included Right of Way Surveying and staking for the entire proposed water line route. This also included staking of the proposed water line servitude.

Entergy Transmission Line Expansion, East Baton Rouge, Livingston & Tangipahoa Parish, LA.

Mr. Mosby served as a project manager and field survey party superintendent for an approximately 50 mile transmission line expansion starting from the Vignes Substation then North into Livingston and from there East through Tangipahoa. The project included Right of Way Surveying and staking for the entire proposed transmission line route. This also included calculating and staking of the proposed transmission line servitude. This also included property owner research, right of entry acquisition, and right-of-way plats.

Waste Management New Cell Construction, Livingston Parish, LA.

Mr. Mosby was involved in all areas of the preliminary surveying of the site of the new trash cells as well as construction staking, and review of field work and office prepared documents. He was also involved with the on-going surveying of the existing cells.

Principal Surveyor
(p): 225-698-1600
(f): 225-698-3367
smosby@quesla.com



Gage Spell, LSI

SURVEY TECHNICIAN

EDUCATION

Bachelor of Science Physical
Geography—Louisiana State
University, Minor in Surveying

REGISTRATIONS

Certified Remote Pilot—
4052158
LSI No. 686

EXPERIENCE

This Firm	4.8 Years
Total	6 Years



Mr. Spell graduated from Louisiana State University in December 2017 with a Bachelor of Science in Physical Geography and a Minor in Surveying. Since being part of the QES team, Mr. Spell has been the field inspector for many projects that have consisted of topographic surveys, hydrographic surveying locating geotechnical boring locations and identifying and locating existing utility and improvement locations. Mr. Spell is a Land Surveying Intern in Louisiana with 3 years in construction. He has 5 years of experience in surveying and civil engineering. Mr. Spell has experience in hazard mitigation work in Louisiana for Livingston and Tangipahoa parishes providing damage assessment and improvements for area damaged by the August 2016 flood. He oversees the drone flying for inspection, volumetric survey, and worksite survey.

Grays Creek Drainage Improvements, Livingston Parish

QES was selected to provide surveying and engineering services for a drainage improvement project for Gray's Creek. At approximately eighteen (18) miles, Gray's Creek is the largest drainage project to be undertaken in Livingston Parish. QES utilized three (3) full time survey crew and staff and professional engineers to develop a solution to reduce the effect of inland flooding in Livingston Parish.

Jesuit Bend Drainage Improvement

Mr. Spell acted as a field inspector and corrected drawings for this project. QES secured funding from GOSHEP/FEMA to complete designs studies and surveys of area to improve drainage in the Jesuit Bend area on Highway 23. The proposed project included replacing existing culverts and installing new culverts at three different locations. Three studies or more than 60 acres were completed.

Boudreaux Street to Gilmore Drive Drainage Improvements

Quality Engineering & Surveying, LLC provided preliminary H&H studies to provide recommendation for drainage improvements in the Berwick area of St. Mary Parish. Once complete with recommendations, QES will engineer and design the drainage improvements to an existing earthen channel of 1,711 linear feet and existing culverts to a proposed subsurface drainage system in order to properly drain the areas of flooding in the area.

Breaux Bridge Manor Drainage Improvement

QES provided preliminary H&H studies to provide recommendations for drainage improvements in the Berwick area of St. Mary Parish. Once complete with recommendations, QES will engineer and design the drainage improvements to an existing earthen channel of 1,711 linear feet and existing culverts to a proposed subsurface drainage system in order to properly drain the areas of flooding in the area.

Principal Surveyor
(p): 225-698-1600
(f): 225-698-3367
gspell@qesla.com



Joey Pitzer

SENIOR FIELD CREW CHIEF & FIELD OPERATION DIRECTOR

EDUCATION

Not Applicable

REGISTRATIONS

Not Applicable

EXPERIENCE

This Firm	6 Years
Total	41 Years

Mr. Pitzer is the field crew coordinator at Quality Engineering and Surveying. He oversees 8 Rodman and Party Chiefs. Mr. Pitzer has extensive land surveying knowledge as he has been in the industry for over 40 years. This knowledge was gained in the field and training and supervising others in the field. His immense experience and dedication to his work is a great asset to Quality and the projects that he works on. Mr. Pitzer has worked on a variety of projects in the municipal, commercial, and residential fields.

Grays Creek Drainage Improvements, Livingston Parish

QES was selected to provide surveying and engineering services for a drainage improvement project for Gray's Creek. At approximately eighteen (18) miles, Gray's Creek is the largest drainage project to be undertaken in Livingston Parish. QES utilized three (3) full time survey crew and staff and professional engineers to develop a solution to reduce the effect of inland flooding in Livingston Parish.

Amite Church Road Drainage Study

Amite Church Road is a recent project that Mr. Pitzer is overseeing. The road closure is to allow the Department of Public Works and the gravity drainage district to install a cross drain, repair shoulders and perform ditch work. The project will include surveying, preliminary layouts, construction plans, traffic impact study, drainage impact study, landscape plan, contract administration, construction stakeout, construction supervision, as-built, and final plat.

Boudreaux Street to Gilmore Drive Drainage Improvements

QES provided preliminary H&H studies to provide recommendations for drainage improvements in the Berwick area of St. Mary Parish. Once complete with recommendations, QES will engineer and design the drainage improvements to an existing earthen channel of 1,711 linear feet and existing culverts to a proposed subsurface drainage system in order to properly drain the areas of flooding in the area.

Breaux Bridge Manor Drainage Improvements

Mr. Pitzer was the Senior Crew Chief & Field Operations Director for this project. QES was selected to complete the studies and design of the Breaux Bridge Manor Drainage Improvement project. A study of 603 acres was completed. The project will remove an existing box culvert that is set at the wrong elevation. A larger culvert will replace the existing culvert and will be set at the appropriate elevation to ensure proper conveyance of water in the drainage area.

Senior Crew Chief & Field Operations Director

(p): 225-698-1600

(f): 225-698-3367

jpitzer@qesla.com



Brian Fortson

Senior Wetland Scientist

EDUCATION

Loyola University School of Law —Juris Doctorate in

Civil Law (cum laude)

Southeastern Louisiana University —Bachelor of Science in

Wetland Ecology

EXPERIENCE

This Firm 5.0 Years

Total 30.0 Years

Mr. Fortson served as a Planner, Environmental Specialist and Coastal Wetland and Environmental Resources Manager for St. Tammany Parish Government from 1990 to 2012. He was responsible for the administration of the St. Tammany Parish Local Coastal Program under the Coastal Zone Management Act and was responsible for managing the natural resource permitting efforts for Parish Government. Mr. Fortson was the Coastal Wetlands Planning, Protection and Restoration Act (CWPPRA) representative for St. Tammany Parish beginning with Project Priority List 1 and has proposed and presented multiple coastal restoration projects and facilitated the approval of projects through that process. With ELOS, Mr. Fortson has led permitting efforts for multiple projects for local development and infrastructure improvement efforts. Mr. Fortson provides technical expertise on many other projects for which he is not the lead scientist.

Plaquemines Parish Coastal Consulting Team

Mr. Fortson prepared the Wetlands Value Assessments (WVA) for seven ridge restoration projects evaluating the ecological functions and values. He coordinated with natural resource agencies and assisted each engineering firm with design revisions for inclusion of sufficient marsh creation to make the projects self-mitigation with a yield of about a 2:1 ratio to compensate for impacts to marsh from construction of the ridge. He also provided a comparative cost analysis of other mitigation measures to show the offset of the additional construction costs.

Wilkinson Canal Pump Station Outfall Modification

Mr. Fortson is the lead permitting manager for the modification of the newly constructed Wilkinson Pump Station in Myrtle Grove, LA. The Project involved Coastal Use and DOA Section 404 permitting, Section 14 (408) permitting and engineering review, and landowner coordination. Mr. Fortson worked closely with the project engineer to define the project elements, its synchronicity with the newly constructed pump station, and the local government officials to ensure the project was designed with no net wetland impact and resulted in a proposal that provided overall benefits to water quality and coastal wetland habitats.

Baptiste Collette and Spanish Pass Ridge Restoration and Marsh Creation Project

Mr. Fortson's role was Ecological Resource Valuations and Technical Review. ELOS prepared a draft white paper to support a proposal to dredge Baptiste Collette and beneficially use the material for the Spanish Pass Ridge. The paper summarized various types of ecological value assessments including the WVA model that could be used to assign a monetary value to ecological functions and values for purposes of calculating a benefit/cost ratio as required by the USACE for federal projects. Mr. Fortson described methodologies including the WVA, commercial mitigation banking, and beneficial use of dredge projects to support the concept in the paper.



ELOS Environmental, L.L.C.
(p): 985-662-5501
(f): 985-662-5504
bfortson@elosenv.com



Carey Lynn Perry

Coastal Sciences Specialist

EDUCATION

Louisiana State University—
Master of Science in

Oceanography and Coastal
Sciences

Eckerd College —Bachelor of
Science in

REGISTRATIONS

Not Applicable

EXPERIENCE

This Firm	1.0 Years
Total	14.0 Years



ELOS Environmental, L.L.C.
(p): 985-662-5501
(f): 985-662-5504
cperry@elosenv.com

Ms. Perry's experience includes project and program management in the public, private, and non-profit sectors. Ms. Perry has over 10 years of experience in a wide variety of environmental planning projects and environments. She has managed large-scale coastal and riparian monitoring projects, coastal wetlands restoration projects, flood protection, and environmental planning projects. She has also managed protected species surveys, general wildlife inventories, and has prepared NEPA documents for projects throughout the U.S. She has a diverse background in coastal and marine sciences and habitat restoration and research experience in California, Florida, Louisiana, Oregon, Costa Rica, Mexico, and Hawaii.

Desktop Habitat Analysis for Mid-Breton Sediment Diversion

ELOS was contracted to complete a desktop habitat analysis for approximately 26,985 acres of possible delta-influences area within the proposed Mid-Breton Sediment Diversion outfall area in Plaquemines Parish, Louisiana. Ms. Perry used publicly available data to quantify marsh acreage and distinguish marsh types within the proposed outfall area, including: infrared aerial photographs, LIDAR data, USGS hydrologic unit code water data, NRCS soil survey, USFWS National Wetlands Inventory maps, and Louisiana Coastwide Reference Monitoring Systems (CRMS) Wetlands monitoring data. She compiled all data into a report that described freshwater forest/shrub wetland, freshwater marsh, intermediate marsh, brackish marsh, salt marsh, and open water habitats and their respective acreages.

Wetland Restoration and Wetland Conversion Area Monitoring, Naval Facilities Engineering Command Southeast Region (NAVFAC SE)

Ms. Perry conducted quarterly, semi-annual, and annual wetland mitigation and conversion area compliance monitoring, as required by USACE and Florida Department of Environmental Protection) permits for the NAS Key West Airfield Restoration Project. The project included the conversion of 137 acres of mangroves to saltmarsh habitat, and 75 acres of uplands were restored to wetlands. Ms. Perry collected data and provided observation and results to regulatory agencies through reports consisting of statistical treatment of data and a narrative summarizing restoration progress. She also captured digital images at fixed photo stations established within each wetland restoration area. Ms. Perry organized, supervised, and participated in field data collection, data analysis, and completed all monitoring reports.

Environmental assessment (EA) and Habitat/land use Assessment for Sam Rayburn Lake, Environmental Services for the Preparation of NEPA documents for the Proposed Revision to the USACE Lake Master Plan

Ms. Perry prepared an EA as part of the Sam Rayburn Lake 2016 Master Plan Revision. She was responsible for the coordination and preparation of the EA and FONSI. Ms. Perry also completed Texas' Wildlife Habitat Appraisal Procedure (WHAP) field data collection, data analysis, and Lake Habitat Assessment Report. Ms. Perry organized and participated in a public scoping meeting, an alternatives evaluation workshop, and consulted with regulatory agencies.



Flynn Daigle

Senior Project Manager

EDUCATION

Louisiana State University—
Bachelor of Science in

Environmental Management
Systems

REGISTRATIONS

Not Applicable

EXPERIENCE

This Firm 5.0 Years

Total 14.0 Years



ELOS Environmental, L.L.C.
(p): 985-662-5501
(f): 985-662-5504
fdaigle@elosenv.com

Mr. Daigle is ELOS's Lead Project Manager and an Environmental Scientist with experience in many phases of Environmental compliance, including National Environmental Policy Act (NEPA), Section 10 and 404 permitting, wetland delineations, Phase I and II subsurface investigation, and Floodplain Management. He is a Certified Floodplain Manager (CFM) accredited through the Association of State Floodplain Managers (ASFPM). He is responsible for the management of ELOS employees to maximize the effectiveness and timeliness of ELOS's work product through the appropriate allocation of resources while also acting as a project manager on critical initiatives. He is well-versed in regulations governing Section 404 of the Clean Water Act and Section 10 of the Rivers and Harbors Act.

Plaquemines Parish Coastal Consulting Team

Mr. Daigle provided technical expertise for assessing, permitting, and mitigating wetlands for a series of projects in Plaquemines Parish including the Hero Canal, the NOV-NFL levee improvements and drainage relocation, and several ridge restoration and marsh creation projects such as Bayou Long, B-1 Ridge, Grand Bayou, Bayou Eau Noir, and Spanish Pass. As a member of the team, ELOS provided delineation and permitting services, monitored mitigation impacts and recommended compensatory measures including purchase of mitigation banking credits, in-lieu fees, and permittee responsible mitigation.

New Orleans to Venice (NOV)–Non-Federal Levees (NFL) Drainage Improvements SEA #537 and Permitting

Mr. Daigle managed ELOS's staff to complete the CEMVN environmental impact assessment for Supplemental EA #537 and the associated section 404 Department of the Army permit for the New Orleans to Venice (NOV) Hurricane Risk Reduction Project: Changes to the Non-Federal Levees (NFL), Plaquemines Parish, LA. ELOS was responsible for environmental analysis of modifications to the drainage system between La Reussitte and St. Jude including wetlands and other waters, cultural resources, and hazardous waste.

Lac des Allemands Shoreline Protection

Mr. Daigle managed the permitting for the placement of rip rap armoring along the shores of Lac des Allemands, a tidally influenced freshwater lake in St. John the Baptist Parish. Mr. Daigle oversaw the Joint Permit Application to the Louisiana Department of Natural Resources – Office of Coastal Management (LDNR). He secured authorizations from the United States Army Corps of Engineers for impacts to Section 10 waters, coordinated with the Louisiana Office of State Lands to obtain the required right-of-way for the placement of rock dykes in state owned water bottoms, and collaborated with the Louisiana Department of Wildlife and Fisheries and LDNR to minimize impacts to species of concern.



Jesse McQuigg

Geographic Information Systems Manager

EDUCATION

Northshore Technical
Community College—Drafting
and Design

REGISTRATIONS

2016, FAA Licensed Remote
Pilot, License No. 3984363

EXPERIENCE

This Firm	6.0 Years
Total	6.0 Years

Almost all ELOS projects begin with data collection and mapping. As such, Mr. McQuigg and his team touch every project providing data collection and mapping services for clients. Mr. McQuigg has experience with ArcGIS Online, Collector of ArcGIS, Survey 123, Expert GPS, BaseCamp, and Google Earth. With the use of these software programs, he collects and interprets field data in support of environmental analyses and impact assessments. The figures and maps he and his staff generate are vital to the development of National Environmental Policy Act (NEPA) documentation, Threatened and Endangered (T&E) Species Surveys, Wetlands Delineations and Jurisdictional Determinations, Phase I Environmental Site Assessments, Section 404/10 and Coastal Use Permit applications, and wetlands assessment models. Mr. McQuigg has obtained his Certified Small Unmanned Aircraft Systems (SUAS) Remote Pilot license, allowing ELOS to survey remote extents and environmentally sensitive areas in a non-invasive and efficient manner.

Plaquemines Parish Coastal Consulting Team

Mr. McQuigg provided GIS/AutoCAD support for assessing, permitting, and mitigating wetlands for a series of projects in Plaquemines Parish including the Hero Canal, the NOV-NFL levee improvements and drainage relocation, and several ridge restoration and marsh creation projects such as Bayou Long, B-1 Ridge, Grand Bayou, Bayou Eau Noir, and Spanish Pass. Mr. McQuigg and his team provided figures and drawings in support of delineation and permitting services and mitigation impact monitoring.

New Orleans to Venice (NOV)–Non-Federal Levees (NFL) Drainage Improvements SEA #537 and Permitting

Mr. McQuigg led the GIS team in the Plaquemines Parish Government search for coastal wetland mitigation locations to provide mitigation for the USACE-led NOV/NFL Project on the west bank of Plaquemines Parish. This consisted of a detailed review of aerial photography to identify brackish and fresh marsh areas experiencing land loss.

Land Use and Transportation Study Harrison Avenue Extension

Mr. McQuigg coordinated GIS/AutoCAD personnel in creating the necessary documents and figures to support the environmental assessment and analysis of future land use to assist the Parish with its future decision making processes.



ELOS Environmental, L.L.C.
(p): 985-662-5501
(f): 985-662-5504
jmcquigg@elosenv.com



Maria Bernard Reid

NEPA Specialist

EDUCATION

Louisiana State University—
Master of Science in
Agribusiness and Economics

Louisiana State University—
Bachelor of Science in

Forest Management and
Wildlife

REGISTRATIONS

Not Applicable

EXPERIENCE

This Firm 1.0 Years

Total 18.0 Years



ELOS Environmental, L.L.C.
(p): 985-662-5501
(f): 985-662-5504
mreid@elosenv.com

Ms. Reid has experience in National Environmental Policy Act (NEPA) compliance in both the public and private sectors. She managed, planned, and participated in projects requiring protected species surveys, general wildlife inventories, forest inventories, biological assessments (BA), wetland delineations and permitting, Categorical Exclusions (CE), Environmental Assessments (EA), and Environmental Impact Statements (EIS) in Louisiana, Mississippi, Alabama, Michigan, New York, Georgia, Tennessee, Florida, Arkansas, Texas, California, New Mexico, and Arizona. She worked with Federal and state government clients including U.S. Department of the Army, Department of the Navy, Department of Homeland Security, Customs and Border Protection, U.S. Army Corps of Engineers, U.S. Forest Service, and Louisiana DOTD. Her specialized areas of expertise include: protected species surveys and Section 7 consultation, natural resources management, public outreach, and bike/pedestrian transportation projects.

Jefferson Parish Pump Stations, Veterans Boulevard (Environmental Assessment)

Ms. Reid updated the existing permit applications and prepared an environmental assessment for the Section 408 permit review. The project was proposed by Jefferson Parish Government to improve street drainage at the Veterans Boulevard crossing of the 17th Street Canal. Jefferson Parish proposes to install two pump stations along the west side of the canal, one north and one south of Veterans Boulevard. The pump station outfall pipes are designed to cut through the existing floodwalls and empty into the 17th Street Canal.

LA 73 (Government Street): Road Diet (Categorical Exclusions)

Ms. Reid served as the Environmental Coordinator for the project. She prepared the environmental document and tracked it through its approval, planned and conducted public meetings and facilitated landowner/business outreach.

Environmental Compliance for the SBInet Northern Border Project, US Border Patrol, Buffalo and Detroit Sectors

Ms. Reid was responsible for the coordination and preparation of an EA for the proposed communication and sensor towers. Ms. Reid conducted field surveys for the initial site selection process, vegetative mapping, and threatened and endangered species.

Threatened, Endangered, and Rare Species Survey, Stennis Western Maneuver Area, Navy Construction Battalion Center

Ms. Reid planned and conducted surveys to identify the natural communities present at the site, assessed the quality of habitat, and detect any federal and state threatened, endangered, and rare species. Migratory bird species were also accounted for as well as mapping of invasive species populations.



Martin “Marty” Healey

Registered Professional Archaeologist

EDUCATION

University of Miami Rosenstiel
School of Marine and
Atmospheric Sciences
(RSMAS)—Master of Science
in Marine Affairs and Policy

University of Miami—Bachelor
of Science in Marine Science

University of Miami—Bachelor
of Science in Anthropology

REGISTRATIONS

Registered Professional
Archaeologist

EXPERIENCE

This Firm	1.0 Years
Total	18.0 Years



ELOS Environmental, L.L.C.
(p): 985-662-5501
(f): 985-662-5504
mhealey@elosenv.com

Mr. Healey is a Registered Professional Archaeologist (RPA), who has spent his career working on federal, state, and local cultural resource projects. He is a member of Southeastern Archaeological Conference (SEAC), the Florida Anthropological Society (FAS), the St. Augustine Archaeological Association (SAAA), and the Florida Trust for Historic Preservation. He is certified as an Archaeological Monitor (FLSHPO), Environmental Compliance Officer (FL Department of Military Affairs), and a Cultural and Natural Resource Manager (U.S. Department of Army/Department of Defense). His credentials as a diver include Advanced Diver (NAUI), NITROX Diver (IAONTIROXD), Research Diver (RSMAS /AAUS), and a Scientific Diver (Lighthouse Archaeological Maritime Program (LAMP)). As a member of the Divers Accident Network (DAN), he has trained as a Diving Emergency Management Provider, an ADE Administrator, Advanced O2 Administrator, and performed On-site Neurological Assessments for Divers, and Dangerous Marine Animal Assessments. He is a member of the National Guard Bureau - Cultural Resource Committee, the National Estuarine Research Reserve – Coastal Training Program Committee, the Nation’s Oldest Port National Heritage Area, and the Flagler County Blue Ribbon Wetlands Committee.

Sustainment, Restoration, and Modernization IDIQ Contract USACE Savannah District: Fort Stewart/Hunter Army Airfield Task Orders

Mr. Healey managed preparation and delivery of the following studies: Archaeological Site Significance Model Update, Site Significance in Georgia: A Synthesis of Cultural Resources Investigations Fort Stewart and Hunter Army Airfield, and conducted Phase I and Phase II archaeological investigations within Ft. Stewart Army Base Training Areas and on Fort Stewart Military Reserve totaling over 30,000 acres.

Cultural Resource Assessment Surveys at Cape Canaveral, FL, Fort Bragg, NC, and Redstone Arsenal, AL

Mr. Healey oversaw conducting the Phase I and Phase II Cultural Resource Assessment Surveys.

NEPA Environmental Assessment with Section 106 Consultations Libby Army Airfield

Mr. Healey oversaw conducting the Phase I and prepared Section 106 letters and documents and all associated consultation materials.

Livingston Executive Airport

Mr. Healey served as principal investigator and archaeologist in conducting the Phase I Cultural Resource Survey and in preparing Section 106 letters and documents and all associated consultation materials.



Lucas Watkins

Principal

EDUCATION

Southeastern Louisiana
University—Master of Science
in Biological Sciences

Louisiana State University—
Bachelor of Science in
Forest Management

REGISTRATIONS

2010, LA Department of
Agriculture and Forestry,
Arborist, License No. 1827

EXPERIENCE

This Firm	12.0 Years
Total	18.0 Years



Mr. Watkins is a biologist and regulatory compliance specialist with experience identifying and addressing environmental compliance issues. With his partner, Jay Prather, he founded ELOS Environmental, LLC, an environmental consulting firm specializing in wetlands and other natural resource analysis and regulatory compliance. Mr. Watkins is a member of the Society of Wetlands Scientists, Society of American Foresters, and the International Society of Arboriculture. Besides being trained in NEPA and wetlands, he also is a licensed LDAF Arborist, a certified NPDES Erosion Inspector, a Nuisance Wildlife Control Operator, and a Certified Prescribed Burn Manager. Other training includes ASTM Phase I and Phase II Environmental Site Assessments, Wetland Rapid Assessment Procedures, Stormwater Management, and FERC Regulatory Overview and Guidance.

Plaquemines Parish Coastal Consulting Team

Mr. Watkins provided technical expertise for assessing, permitting, and mitigating wetlands for a series of projects in Plaquemines Parish including the Hero Canal, the NOV-NFL levee improvements and drainage relocation, and several ridge restoration and marsh creation projects such as Bayou Long, B-1 Ridge, Grand Bayou, Bayou Eau Noir, and Spanish Pass. ELOS provided delineation and permitting services, monitored mitigation impacts, and recommended compensatory measures including purchase of mitigation banking credits, in-lieu fees, and permittee responsible mitigation.

East Bank Levee Lift

Mr. Watkins manages the work of obtaining the necessary state and federal authorizations for raising approximately 18 miles of levee between Braithwaite and White Ditch to a +12.5 ft. elevation. Work includes performing all field work and mapping to produce a wetlands delineation, compiling a wetlands findings report, facilitating the issuance of a formal jurisdictional determination, submitting and coordinating project applications through regulatory agencies such as the U.S. Army Corps of Engineers (USACE), Louisiana Department of Natural Resources (LDNR), Louisiana Department of Environmental Quality, obtaining necessary permits, conducting avian roost surveys, and providing an estimate of mitigation requirements and coordinating and planning and permitting a permittee responsible mitigation project to offset wetland impacts from the levee lift. Mitigation project permitting includes conceptual project design, site selection, site assessment, coordination with all affected landowners for property security, coordination with all relevant resource and regulatory agencies, coordination with the USACE offices conducting projects in the vicinity, survey coordination, title searches and certifications, and contact with dredge and project management firms to help with cost projections.

Strategic Petroleum Reserve Valve Site Access Improvements EA 2040

Mr. Watkins performed the field surveys for the wetlands delineation and biological surveys including essential fish habitat and submerged aquatic vegetation identifications for the West Hackberry site.

PROFESSIONAL COVERAGE



CERTIFICATE OF LIABILITY INSURANCE

DATE (MM/DD/YYYY)
7/10/2018

THIS CERTIFICATE IS ISSUED AS A MATTER OF INFORMATION ONLY AND CONFERS NO RIGHTS UPON THE CERTIFICATE HOLDER. THIS CERTIFICATE DOES NOT AFFIRMATIVELY OR NEGATIVELY AMEND, EXTEND OR ALTER THE COVERAGE AFFORDED BY THE POLICIES BELOW. THIS CERTIFICATE OF INSURANCE DOES NOT CONSTITUTE A CONTRACT BETWEEN THE ISSUING INSURER(S), AUTHORIZED REPRESENTATIVE OR PRODUCER, AND THE CERTIFICATE HOLDER.

IMPORTANT: If the certificate holder is an ADDITIONAL INSURED, the policy(ies) must be endorsed. If SUBROGATION IS WAIVED, subject to the terms and conditions of the policy, certain policies may require an endorsement. A statement on this certificate does not confer rights to the certificate holder in lieu of such endorsement(s).

PRODUCER Laris Insurance Agency, LLC 810 Crescent Ave. P.O. Box 559 Lockport LA 70374		CONTACT NAME: Allison Lovell PHONE (A/C No. Ext.): (985) 532-5576 FAX (A/C No.): (985) 532-5001 E-MAIL ADDRESS: allison.lovell@larisinsurance.com	
INSURED Quality Engineering & Surveying, LLC 18320 Hwy. 42 Port Vincent LA 70726		INSURER(S) AFFORDING COVERAGE INSURER A: Burlington Insurance Co INSURER B: Houston Specialty Ins Co INSURER C: La. Construction & Industry INSURER D: Lloyd's AIIN #AA1122000 INSURER E: INSURER F:	
		NAIC # 12936	

COVERAGES **CERTIFICATE NUMBER:** 2018-07 **REVISION NUMBER:**

THIS IS TO CERTIFY THAT THE POLICIES OF INSURANCE LISTED BELOW HAVE BEEN ISSUED TO THE INSURED NAMED ABOVE FOR THE POLICY PERIOD INDICATED. NOTWITHSTANDING ANY REQUIREMENT, TERM OR CONDITION OF ANY CONTRACT OR OTHER DOCUMENT WITH RESPECT TO WHICH THIS CERTIFICATE MAY BE ISSUED OR MAY PERTAIN, THE INSURANCE AFFORDED BY THE POLICIES DESCRIBED HEREIN IS SUBJECT TO ALL THE TERMS, EXCLUSIONS AND CONDITIONS OF SUCH POLICIES. LIMITS SHOWN MAY HAVE BEEN REDUCED BY PAID CLAIMS.

INSTR LTR	TYPE OF INSURANCE	ADDL INSD	SUBR WVD	POLICY NUMBER	POLICY EFF (MM/DD/YYYY)	POLICY EXP (MM/DD/YYYY)	LIMITS
A	<input checked="" type="checkbox"/> COMMERCIAL GENERAL LIABILITY			338BW46356	7/1/2018	7/8/2019	EACH OCCURRENCE \$ 1,000,000
	<input type="checkbox"/> CLAIMS-MADE <input checked="" type="checkbox"/> OCCUR						DAMAGE TO RENTED PREMISES (Ea occurrence) \$ 100,000
							MED EXP (Any one person) \$ 5,000
							PERSONAL & ADV INJURY \$ 1,000,000
	GEN'L AGGREGATE LIMIT APPLIES PER:						GENERAL AGGREGATE \$ 2,000,000
	<input checked="" type="checkbox"/> POLICY <input checked="" type="checkbox"/> PRO-JECT <input type="checkbox"/> LOC						PRODUCTS - COM/PO/AGG \$ Included
	OTHER:						\$
B	AUTOMOBILE LIABILITY			HSLR180512703	7/8/2018	7/8/2019	COMBINED SINGLE LIMIT (Ea accident) \$ 1,000,000
	<input type="checkbox"/> ANY AUTO						BODILY INJURY (Per person) \$
	<input type="checkbox"/> ALL OWNED AUTOS <input checked="" type="checkbox"/> SCHEDULED AUTOS						BODILY INJURY (Per accident) \$
	<input checked="" type="checkbox"/> HIRED AUTOS <input checked="" type="checkbox"/> NON-OWNED AUTOS						PROPERTY DAMAGE (Per accident) \$
	<input type="checkbox"/> UMBRELLA LIAB <input type="checkbox"/> OCCUR						EACH OCCURRENCE \$
	<input type="checkbox"/> EXCESS LIAB <input type="checkbox"/> CLAIMS-MADE						AGGREGATE \$
	DED <input type="checkbox"/> RETENTION \$						\$
C	WORKERS COMPENSATION AND EMPLOYER'S LIABILITY			1997418	7/8/2018	7/8/2019	<input checked="" type="checkbox"/> PER STATUTE <input type="checkbox"/> OTH-ER
	ANY PROPRIETOR/PARTNER/EXECUTIVE OFFICER/ MEMBER EXCLUDED? (Mandatory in NH)	Y/N	N/A				E.L. EACH ACCIDENT \$ 1,000,000
	If yes, describe under DESCRIPTION OF OPERATIONS below						E.L. DISEASE - EA EMPLOYEE \$ 1,000,000
							E.L. DISEASE - POLICY LIMIT \$ 1,000,000
D	Professional Liability			ANE200324318	7/8/2018	7/8/2019	Each Claim Limit 1,000,000
							Aggregate Limit 1,000,000

DESCRIPTION OF OPERATIONS / LOCATIONS / VEHICLES (ACORD 101, Additional Remarks Schedule, may be attached if more space is required)
See Attached Addendum for Additional Coverage Information.

CERTIFICATE HOLDER

SAMPLE

CANCELLATION

SHOULD ANY OF THE ABOVE DESCRIBED POLICIES BE CANCELLED BEFORE THE EXPIRATION DATE THEREOF, NOTICE WILL BE DELIVERED IN ACCORDANCE WITH THE POLICY PROVISIONS.

AUTHORIZED REPRESENTATIVE



PINE BLUFF ROAD DRAINAGE
IMPROVEMENT PROJECT
SECTION 5

PROFESSIONAL COVERAGE

PINE BLUFF ROAD DRAINAGE

IMPROVEMENT PROJECT

SECTION 5

COMMENTS/REMARKS

The Certificate of Insurance to which this addendum is a part of does not constitute a contract between the issuing insurer(s), authorized representative or producer, and the certificate holder, nor does it affirmatively or negatively amend, extend or alter the coverage afforded by the policies listed thereon. If any provisions of this addendum conflicts in whole or in part with the terms of the insurance policy(ies), then the provisions of the insurance policy(ies) will prevail.

General Liability Includes:

Blanket Additional Insured as required by written contract
Blanket Waiver of Subrogation as required by written contract
Primary and Non-Contributory as required by written
Per Project Aggregate

Automobile Liability Includes:

Blanket Additional Insured as required by written contract
Blanket Waiver of Subrogation as required by written contract
Primary and Non-Contributory as required by written contract
Thirty Day Notice of Cancellation as required by written contract

Workers Compensation Includes:

Blanket Alternate Employer as required by written contract
Blanket Waiver of Subrogation as required by written contract

All policies will provide thirty (30) days notice of cancellation, (except ten (10) days for non-payment of premium), as well as changes to the policy, only to the first named insured. We are diligently working to resolve this global issue with the carriers, whereby specifically named additional insureds will be afforded cancellation notification also.

OFREMARK

COPYRIGHT 2000, AMS SERVICES INC.



FINANCIAL STATEMENTS

PINE BLUFF ROAD DRAINAGE
IMPROVEMENT PROJECT
SECTION 6

2:42 PM

06/05/19

Accrual Basis

Quality Engineering & Surveying, LLC

Balance Sheet

As of December 31, 2018

	Dec 31, 18
ASSETS	
Current Assets	
Checking/Savings	
Checking at Whitney Bank Buain	14,533.34
Payroll Checking	38,583.89
Petty Cash	0.11
Whitney Savings Account	25,013.69
Total Checking/Savings	78,131.03
Accounts Receivable	
Accounts Receivable	1,733,426.65
Total Accounts Receivable	1,733,426.65
Other Current Assets	
Lendco Loan	259,437.95
Loan to Employee	3,251.67
Prepaid Expenses	
Prepaid Insurance Expenses	22,962.43
Prepaid Expenses - Other	-8,092.62
Total Prepaid Expenses	14,869.86
Undeposited Funds	16,573.59
Total Other Current Assets	294,133.07
Total Current Assets	2,105,690.75
Fixed Assets	
Fixed Assets	
Furniture and Equipment	244,232.73
Furniture & Equipment (Surv)	34,783.27
Misc Equipment	161,099.26
Software	7,895.00
Vehicles	
2015 Chevrolet Colorado	22,000.00
2017 Ford F350	71,787.34
Chev 2500 (Major Auto)	19,000.00
2015 Survey Truck (Murphy)	36,000.00
Vehicles - 2018 GMC Sierra	76,298.50
Trailers - 2016 Load Trail	1,672.10
Vehicles - 2014 Chevy Silverado	39,414.41
Vehicles - Other	-2,836.35
Total Vehicles	263,336.00
Total Fixed Assets	711,346.26
Accumulated Depreciation	-605,247.86
Total Fixed Assets	106,098.40
TOTAL ASSETS	2,211,789.15
LIABILITIES & EQUITY	
Liabilities	
Current Liabilities	
Accounts Payable	
Accounts Payable	84,581.61
Total Accounts Payable	84,581.61
Credit Cards	
American Express	10,752.58
Chase	3,610.97



FINANCIAL STATEMENTS

PINE BLUFF ROAD DRAINAGE

IMPROVEMENT PROJECT

SECTION 6

2:42 PM

06/05/19

Accrual Basis

Quality Engineering & Surveying, LLC

Balance Sheet

As of December 31, 2018

	Dec 31, 18
Whitney Bank CC Corp Acct	
Whitney Card - Don - 2937	7.60
Whitney Bank CC Corp Acct - Other	29,349.92
Total Whitney Bank CC Corp Acct	29,357.52
Total Credit Cards	43,721.07
Other Current Liabilities	
Line of Credit - WNB 6881 (New)	463,787.34
Loan from Deric & Vanessa	2,144.54
Payroll Liabilities	
Payroll Tax Liability- 341	22,810.74
Payroll Liabilities - Other	3,986.15
Total Payroll Liabilities	26,796.89
Pension Plan Payable	3,137.96
Total Other Current Liabilities	495,866.73
Total Current Liabilities	624,169.41
Long Term Liabilities	
N/P - Ally Bank 2018 GMC Sierra	52,787.09
N/P - Whitney Bank survey equip	89,168.35
N/P - Whitney Bank	5,791.97
Total Long Term Liabilities	147,747.41
Total Liabilities	771,916.82
Equity	
Retained Earnings	910,077.90
Net Income	529,794.43
Total Equity	1,439,872.33
TOTAL LIABILITIES & EQUITY	2,211,789.15



FINANCIAL STATEMENTS

2:42 PM

06/05/19

Accrual Basis

Quality Engineering & Surveying, LLC

Profit & Loss

January through December 2018

	Jan - Dec 18
Ordinary Income/Expense	
Income	
Income	5,668,337.97
Invoice Discounts	-6,151.25
Planning Income	7,728.75
Reimbursable Expenses	6,995.50
Total Income	5,676,910.97
Cost of Goods Sold	
Tools & Small Equipment (<\$k)	2,598.63
Blueprints and Reproduction	2,365.64
Cost of Goods Sold	1,219.19
Licenses/Permits/Recording	13,505.38
Salaries & Benefits	1,748,854.06
Subcontracted Services	271,019.11
Total COGS	2,039,562.21
Gross Profit	3,637,348.76
Expense	
Meals	
Meals 50%	217,177.43
Meals (Surveying)	3,047.68
Total Meals	220,225.11
Accountant	20,924.49
Administrative	-207.50
Advertising & Promotion (Surv)	994.12
Advertising and Promotion	
Sponsorship	22,800.00
Advertising and Promotion - Other	70,589.89
Total Advertising and Promotion	93,389.89
Automobile Exp. (Surv)	
Fuel (Surv)	27,344.99
Maintenance (Surv)	9,439.82
Automobile Exp. (Surv) - Other	4,333.74
Total Automobile Exp. (Surv)	41,118.55
Automobile Expense	
Allowance	103,175.00
Fuel	30,611.41
Maintenance	18,031.80
Mileage	63,235.71
Automobile Expense - Other	32,920.60
Total Automobile Expense	247,974.52
Bad-Debt	106,019.50
Bank Service Charges	3,124.27
Business Licenses and Permits	935.00
Charitable Contributions	37,795.98
Cleaning Expense	28,241.15
Computer and Internet Expenses	144,839.05
Continuing Education	8,389.62
Continuing Education (Surv)	550.00
Copies	3,001.01
Depreciation Expense	223,787.00
Dues and Subscriptions	39,353.61



FINANCIAL STATEMENTS

PINE BLUFF ROAD DRAINAGE

IMPROVEMENT PROJECT

SECTION 6

2:42 PM

06/05/19

Accrual Basis

Quality Engineering & Surveying, LLC

Profit & Loss

January through December 2018

	Jan - Dec 18
Employee Benefit/Retention	7,049.55
Entertainment - Other	26,819.51
Equip Maintenance (Surveying)	2,578.37
Equipment	8,997.82
Equipment (Surv)	12,407.31
Equipment Rental	39,602.86
Facility Repairs & Maintenance	41,790.40
Health Care	6,871.03
Insurance Expense	
Automobile Insurance	13,727.93
Dental Insurance	-1,526.65
Disability Insurance	1,387.87
E & O Insurance	26,307.44
Flood Insurance	1,677.00
General Liability Insurance	37,203.55
Health Insurance	64,437.35
Life Insurance	390.81
Vision Insurance	-348.17
Workers Comp Insurance	5,831.00
Total Insurance Expense	149,138.13
Interest Expense	9,503.80
Late fee	673.08
Legal Fees	21,283.93
Licenses/Permits/Record (Surv)	2,639.85
Miscellaneous Expense	1,450.58
New Office Setup	46,799.33
Office Supplies	59,438.47
Outside Services	400.00
Payroll Expense	
Employee Reimbursements	979.07
Payroll Tax - FUTA	2,483.84
Payroll Tax - SUTA	7,873.02
Payroll Tax Expense - 541	178,300.63
Salaries & Wages	855,379.56
Payroll Expense - Other	1,160.06
Total Payroll Expense	1,046,176.18
Pension Plan Expense	51,356.10
Political Contributions	25,400.00
Postage/Shipping	5,944.16
Professional Fees	69,233.21
Rent Expense	49,898.34
Subcontract Services Admin	0.00
Survey Eqp Repairs & Maint	4,639.33
Survey Supplies	27,796.41
Taxes	2,055.50
Telephone Expense	
Cell Phone	36,983.96
Telephone Expense - Other	17,988.73
Total Telephone Expense	54,972.69
Travel/Events/Business Conf.	83,823.28
Uniforms	17,522.79
Utilities	6,754.98
Total Expense	3,103,472.36
Net Ordinary Income	533,876.40



FINANCIAL STATEMENTS

2:42 PM

06/05/19

Accrual Basis

Quality Engineering & Surveying, LLC

Profit & Loss

January through December 2018

	Jan - Dec 18
Other Income/Expense	
Other Income	
Gain/Loss on Disposal of Assets	-851.00
Interest Income	14.58
Total Other Income	-836.42
Other Expense	
Ask My Accountant	3,245.55
Total Other Expense	3,245.55
Net Other Income	-4,081.97
Net Income	529,734.43

PINE BLUFF ROAD DRAINAGE
IMPROVEMENT PROJECT
SECTION 6



CLASSIFICATIONS



Division of Small and Emerging Business Development
SEBD CERTIFICATION

Quality Engineering Surveying, LLC
is hereby certified as a Small and Emerging Business Enterprise.

This certification is valid beginning 6/24/2014 and supersedes any registration or listing previously issued. At any time there is a change in ownership or control of the firm, notification must be made immediately to the Division of Small and Emerging Business Development.

Issued at Baton Rouge, Louisiana 6/24/2014

This certification expires on: 6/24/2024

Certification No. 11389

A handwritten signature in black ink, appearing to read "John W. Matthews, Jr.", is written over a horizontal line.

John W. Matthews, Jr.
Executive Director, Entrepreneurial Services





Quality Engineering & Surveying, LLC
18320 Hwy 42
Port Vincent, LA 70726
www.qesla.com

info@qesla.com

Office: 225-698-1600

Fax: 225-698-3367