



**CENTRALBIDDING**  
FROM CENTRAL AUCTION HOUSE

**5000146159 Purchase of Vertical Turbine Pump and Motor for the Marrero  
Wastewater Treatment Plant**  
Jefferson Parish Government

Project documents obtained from [www.CentralBidding.com](http://www.CentralBidding.com)  
30-Sep-2024 03:52:29 PM



**Bid Number 50-00146159**

**Purchase of Vertical Turbine Pump and Motor for the Marrero  
Wastewater Treatment Plant**

**BID DUE: October 7, 2024 at 11:00 A.M.**

**ATTENTION VENDORS!!!**

**Please review all pages and respond accordingly, complying with all provisions in the technical specifications and Jefferson Parish Instructions for Bidders and General Terms and Conditions. All bids must be received on the Purchasing Department's eProcurement site, [www.jeffparishbids.net](http://www.jeffparishbids.net), by the bid due date and time. Late bids will not be accepted.**

**Jefferson Parish Purchasing Department  
200 Derbigny Street  
General Government Building, Suite 4400  
Gretna, LA 70053  
Buyer Name: Doris Abraham  
Buyer Email: [Doris.Abraham@jeffparish.gov](mailto:Doris.Abraham@jeffparish.gov)  
Buyer Phone: 504-364-2690**

## **MARRERO VERTICAL TURBINE UTILITY WATER PUMP**

### **1.01 SCOPE OF WORK**

1.0 Furnish one (1) vertical turbine pump and motor.

2.0 Any bids submitted for pumps other than that as specified, must include in their bid all information needed to fully demonstrate complete compliance with requirements of these specifications and dimensional duplicity of the existing pumps. The bid will be awarded to the lowest responsible bidder complying with all provisions of this invitation, providing the bid is reasonable, and in the best interest of Jefferson Parish to accept. Jefferson Parish reserves the right to accept or reject the bid in whole or part, any bids that are incomplete or do not demonstrate that they are equal to the requirements of these specifications. It is the bidder's responsibility to provide adequate information necessary for the complete evaluation of their proposed equipment. Jefferson Parish shall be the sole judge as to the equality of any manufacture's offering. Proper measurements must be confirmed by the pump supplier including discharge height, overall depth, etc.

### **2.02 PUMPS**

1. The pumps shall be of the vertical turbine type.
2. The pumps shall be built to standard dimensions such that parts will be interchangeable between existing pumps already installed at the plant. Must match existing pipe discharge dimensions and connections.
3. The pumps shall be supplied by Aurora Layne and Bowler or approved parish equal.

#### **B. Pump Construction**

1. Cast Iron SDH616 water lube 6" – 125# discharge head complete with 1" packing box, stainless steel shaft, 1-3/16" head shaft for 30 H.P. motor. 6" x 1" x length needed for OAL of 10'. Water lube bottom column all with 416 stainless steel shafting and line shaft column, 304 stainless steel retainers with rubber bearing. Cast iron bronze fitted materials of construction with threaded column pipe. Bronze impellers, statically balanced. Fabricated sole plate with correct bolt hole pattern to match existing sole plate in field. 1-1/2" thick to match original centerline. 304 stainless steel basket strainer.

Tnemec N140 white epoxy coating interior and exterior of column, 2 coats, 2 coats on interior of discharge head and standard blue enamel exterior coating. 6" column pipe. Proper measurements must be confirmed by the pump supplier. 416 SS threaded sleeve type motor coupling and drive shaft, 416 SS line shaft, 304 SS spiders. Discharge head to match original center line up and out of the base dimensions. RNL cast iron deep bore bypass packing box with bronze glands, C8440 bronze packing / seal box bearing,

## 2.03 MOTORS

### A. General

1. The motors for the pumps shall be squirrel cage induction type. Motor frames shall be of the VHS, TEFC, 3/60/460V, 1800 RPM with a max. 30 H.P. Temperature rise of 60 degree C over a 40 degree C ambient. Motor shall incorporate a non-reverse ratchet, premium efficiency, steady bushing, inverter duty, space heater.
2. All motors shall be built in accordance with the latest NEMA, IEEE, ANDI and AFBMA standards where applicable.

Item	Design Conditions
Maximum Motor Speed (rpm)	1750
Motor to be Supplied (Hp)	30
Column and Discharge Size (inches)	6"
Design Capacity (GPM)	500
Minimum Bowl TDH at Design Capacity (feet)	168'

### **3.01 Service**

The pump bidder must be listed as a factory authorized service center for the brand they are bidding on and be capable of completely servicing the proposed pumps withing one (1) hour of the project site. The pump bidder must have a direct factory service center and stocking facility capable of completely servicing and supplying spare parts for the proposed pumps withing one (1) hour of the project site. The bidder's factory service center facility shall be available for Jefferson Parish inspection on a twenty-four (24) hour prior notice. The bidder's service center must have full-time, factory trained mechanics certified to service the equipment being offered.

**Industrial Pump Sales, Inc.**  
2814 Engineers Rd, Belle Chasse, LA 70037  
(504) 393-7010

### **4.01 Warranty**

The pump unit or any parts thereof shall be warranted against defects in material or workmanship withing one year from date of installation or 18 months from date of manufacture, whichever comes first, and shall be replaced at no charge with a new or manufactured part, F.O.B factory or authorized warranty service center.

-END OF SECTION-

**INVITATION TO BID  
THIS IS NOT AN ORDER**

Page: 1

**DATE: 9/27/2024**

**BID NO.: 50-00146159**

**JEFFERSON PARISH  
PURCHASING DEPARTMENT  
P.O. BOX 9  
GRETN, LA. 70054-0009  
504-364-2678**

**VENDOR: 27118 BLANK BID COPY VENDOR**

**PURCHASING SPECIALIST:  
DABRAHAM@jeffparish.net**

**Bids will be received until 11:00 AM, 10/07/2024 via online at [www.jeffparishbids.net](http://www.jeffparishbids.net).**

**LATE BIDS WILL NOT BE ACCEPTED**

**NOTE: ONLY BIDS WRITTEN IN INK OR TYPEWRITTEN, AND PROPERLY SIGNED BY A MEMBER OF THE FIRM OR AUTHORIZED REPRESENTATIVE, WILL BE ACCEPTED. PENCIL AND/OR PHOTOSTATIC FIGURES OR SIGNATURES SHALL RESULT IN BID REJECTION. HOWEVER, ELECTRONIC SIGNATURES AS DEFINED IN LSA – R.S. 9:2602(8) ARE ACCEPTABLE. SIGNATURE MUST BE A SECURED DIGITAL SIGNATURE AND MUST PROVIDE PROOF OF THE SECURED SIGNATURE WITH BID SUBMISSION.**

All bids submitted are subject to these instructions and general conditions and any special conditions and specifications contained herein, all of which are made part of this bid proposal reference. By submitting a bid, vendor agrees to comply with all provisions of Louisiana Law, as well be in compliance with the Jefferson Parish Code of Ordinances, Louisiana Code of Ethics, applicable Jefferson Parish ethical standards and Jefferson Parish Resolution No. 136353 as amended. A copy of these resolutions may be obtained from the Office of the Parish Clerk, Suite 6700, Jefferson Parish General Government Building, 200 Derbigny Street, Gretna, LA 70053. You may also obtain a copy by visiting the Purchasing Department webpage at <http://www.jeffparish.gov/464/Purchasing> and clicking on On-line forms.

All vendors submitting bids should register as a Jefferson Parish vendor if not already yet registered. Registration forms may be downloaded from <http://www.jeffparish.gov/464/Purchasing> and by clicking on Vendor Information. Current W-9 forms with respective Tax Identification numbers and vendor applications may be submitted at any time; however, if your company is not registered and/or a current W-9 form is not on file, vendor registration is mandatory. Vendors may experience a delay in payment if your company is not a registered vendor with Jefferson Parish.

Jefferson Parish is exempt from paying sales tax under LSA-R.S. 47:301 (8)(c). All prices for purchases by Jefferson Parish of supplies and materials shall be quoted in the unit of measure specified and unless otherwise specified, shall be exclusive of state and local taxes. The price quoted for work shall be stated in figures. In the event there is a difference in unit prices and totals, the unit price shall prevail. Quotations shall be based on F.O.B. Delivered, anywhere within the Parish as designated by the Purchasing Department. JEFFERSON PARISH WILL ACCEPT ONE BID ONLY FROM EACH VENDOR. Items bid must meet specifications. JEFFERSON PARISH will accept one price for each item unless otherwise indicated. Two or more prices for one item will result in bid rejection. Bidders are required to complete, sign and return the bid form and/or complete and return the associated line item pricing forms as indicated. The price quoted for work shall be stated in figures. In the event there is a difference in unit prices and totals, the unit prices shall prevail

JEFFERSON PARISH reserves the right to award contracts or place orders on a lump sum or individual item basis, or such combination, as shall in its judgment be in the best interest of JEFFERSON PARISH. Every contract or order shall be awarded to the LOWEST RESPONSIVE and RESPONSIBLE BIDDER, taking into consideration the CONFORMITY WITH THE SPECIFICATIONS and the DELIVERY AND/OR COMPLETION DATE

PROTESTS: Only those vendors that submit bids in response to this solicitation may protest any element of the procurement, in writing to the Director of the Purchasing Department. Written protest must be received within 48 hours of the release of the bid tabulation by the Purchasing Department. After consultation, the Parish Attorney's Office will then respond to protests in writing. (For more information, please see Chapter 2, Article VII, Division 2, Sec. 2-914.1 of the Jefferson Parish Code of Ordinances.)

JEFFERSON PARISH reserves the right to cancel all or any part of an order if not shipped promptly. No charges will be allowed for parking or cartage unless specified in the quotation. The order must not be filled at a higher price than quoted. JEFFERSON PARISH reserves the right to cancel at any time and for any reason by issuing a THIRTY (30) day written notice to the contractor.

JEFFERSON PARISH requires all products to be new (current) and all work must be performed according to standard practices for the project. Unless otherwise specified, no aftermarket parts will be accepted. Unless otherwise specified, all workmanship and materials must have at least one (1) year guaranty, in writing, from the date of delivery and/or acceptance of the project. Any deviations or alteration from the specifications must be indicated on the bid form for each item and upon request, product data for same must be submitted by the time specified by the Purchasing Department.

If this bid requires a pre-bid conference (see Additional Requirements section), bidders are advised that such conference will be held to allow bidders the opportunity to identify any discrepancies in the bid specifications and seek further clarification regarding instructions. The Purchasing Department will issue a written response to bidders' questions in the form of an Addendum.

All formal Addenda require written acknowledgment on the bid form by the bidder by the bidder placing the Addendum number in the appropriate section. Failure to acknowledge an Addendum on the bid form shall cause the bid to be rejected; JEFFERSON PARISH reserves the right to award bid to next lowest responsive and responsible bidder in this event.

USE OF BRAND NAMES AND STOCK NUMBERS: Where brand names and stock numbers are specified, it is for the purpose of establishing certain minimum standards of quality. Bids may be submitted for products of equal quality, provided brand names and stock numbers are specified. Complete product data may be required prior to award.

Quantities listed are for bidding purposes only. Actual requirements may be more or less than quantities listed.

**INSTRUCTIONS FOR BIDDERS AND GENERAL CONDITIONS**

Bidders are not to exclude from participation in, deny the benefits of, or subject to discrimination under any program or activity, any person in the United States on the grounds of race, color, national origin, or sex; nor discriminate on the basis of age under the Age Discrimination Act of 1975, or with respect to an otherwise qualified handicapped individual as provided in Section 504 of the Rehabilitation Act of 1973, or on the basis of religion, except that any exemption from such prohibition against discrimination on the basis of religion as provided in the Civil Rights Act of 1964, or Title VI and VII of the Act of April 11, 1968, shall also apply. This assurance includes compliance with the administrative requirements of the Revenue Sharing final handicapped discrimination provisions contained in Section 51.55 (c), (d), (e), and (k)(5) of the Regulations. New construction or renovation projects must comply with Section 504 of the 1973 Rehabilitation Act, as amended, in accordance with the American National Standard Institute's specifications (ANSI A1 17.1-1961).

Jefferson Parish and its partners as the recipients of federal funds are fully committed to awarding a contract(s) to firm(s) that will provide high quality services and that are dedicated to diversity and to containing costs. Thus, Jefferson Parish strongly encourages the involvement of minority and/or woman-owned business enterprises (DBE's, including MBE's, WBE's and SBE's) to stimulate participation in procurement and assistance programs.

**IN ACCORDANCE WITH STATE REGULATIONS JEFFERSON PARISH OFFERS ELECTRONIC PROCUREMENT TO ALL VENDORS**

**This electronic procurement system allows vendors the convenience of reviewing and submitting bids online.**

**This is a secure site and authorized personnel have limited read access only. Bidders are to submit electronically using this free service; while the website accepts various file types, one single PDF file containing all appropriate and required bid documents is preferred. Bidders submitting uploaded images of bid responses are solely responsible for clarity. If uploaded images/documents are not legible, then bidder's submission will be rejected. Please note all requirements contained in this bid package for electronic bid submission.**

**Please visit our E-Procurement Page at [www.jeffparishbids.net](http://www.jeffparishbids.net) to register and view Jefferson Parish solicitations. For more information, please visit the Purchasing Department page at <http://www.jeffparish.gov/464/Purchasing>.**

**ADDITIONAL REQUIREMENTS FOR THIS BID**

PLEASE MATCH THE NUMBERS PRINTED IN THIS BOX WITH THE CORRESPONDING INSTRUCTIONS BELOW. IF THE NUMBER IS NOT SPECIFIED IN THIS BOX, IT IS NOT APPLICABLE FOR THIS BID.

13

1. All bidders must attend the MANDATORY pre-bid conference and will be required to sign in and out as evidence of attendance. In accordance with LSA R.S. 38:2212(I), all prospective bidders shall be present at the beginning of the MANDATORY pre-bid conference and shall remain in attendance for the duration of the conference. Any prospective bidder who fails to attend the conference or remain for the duration shall be prohibited from submitting a bid for the project.
2. Attendance to this pre-bid conference is optional. However, failure to attend the pre-bid conference shall not relieve the bidder of responsibility for information discussed at the conference. Furthermore, failure to attend the pre-bid conference and inspection does not relieve the successful bidder from the necessity of furnishing materials or performing any work that may be required to complete the work in accordance with the specification with no additional cost to the owner.
3. Contractor must hold current applicable JEFFERSON PARISH licenses with the Department of Building Permits. Contractor shall obtain any and all permits required by the JEFFERSON PARISH Department of Building Permits. The contractor shall be responsible for the payment of these permits. All permits must be obtained prior to the start of the project. Contractor must also hold any and all applicable Federal and State licenses. Contractor shall be responsible for the payment of these permits and shall obtain them prior to the start of the project.
4. A LA State Contractor's License will be required in accordance with LSA R.S. 37-2150 et. seq. and such license number will be shown on the outside of the bid electronic envelope. Failure to comply will cause the bid to be rejected. When submitting the bid electronically, the license number must be entered in the appropriate field in the electronic procurement system. Failure to comply will cause the bid to be rejected.

**INSTRUCTIONS FOR BIDDERS AND GENERAL CONDITIONS**

5. It is the bidder's responsibility to visit the job site and evaluate the job before submitting a bid.
6. Job site must be clean and free of all litter and debris daily and upon completion of the contract. Passageways must be kept clean and free of material, equipment, and debris at all times. Flammable material must be removed from the job site daily because storage will not be permitted on the premises. Precaution must be exercised at all times to safeguard the welfare of JEFFERSON PARISH and the general public.
7. **PUBLIC WORKS BIDS:** All awards for public works in excess of \$5,000.00 will be reduced to a formal contract which shall be recorded at the contractor's expense with the Clerk of Court and Ex-Officio Recorder of Mortgages for the Parish of Jefferson. A price list of recordation costs may be obtained from the Clerk of Court and Ex-Officio Recorder of Mortgages for the Parish of Jefferson. All awards in excess of \$25,000.00 will require both a performance and a payment bond. Unless otherwise stated in the bid specifications, the performance bond requirements shall be 100% of the contract price. Unless otherwise state in the bid specifications, the payment bond requirements shall be 100% of the contract price. Both bonds shall be supplied at the signing of the contract.
8. **NON-PUBLIC WORKS BIDS:** A performance bond will be required for this bid. The amount of the bond will be 100% of the contract price unless otherwise indicated in the specifications. The performance bond shall be supplied at the signing of the contract.
9. **NON-PUBLIC WORKS BIDS:** A payment bond will be required for this bid. The amount of the bond will be 100% of the contract price unless otherwise indicated in the specifications. The payment bond shall be supplied at the signing of the contract.
10. All bidders must comply with the requirements stated in the attached "Standard Insurance Requirements" sheet attached to this bid solicitation. Any deviation from the Standard Insurance Requirements must be requested in writing prior to bid opening. Written approval for any deviation, must be submitted with your bid submission. Failure to comply with this instruction will result in bid rejection.
11. A bid bond will be required with bid submission in the amount of 5% of the total bid, unless otherwise stated in the bid specifications. All sureties must be in original format (no copies). When submitting a bid online, vendors must submit an electronic bid bond through the respective online clearinghouse bond management system(s) as indicated in the electronic bid solicitation on Central Auction House. No scanned paper copies of any bid bond will be accepted as part of the electronic bid submission.
12. This is an as needed basis contract. JEFFERSON PARISH makes no representations on warranties with regard to minimum guaranteed quantities unless otherwise stated in the bid specifications.
13. Freight charges should be included in total cost when quoting. If not quoted FOB DELIVERED, freight must be quoted as a separate item. Bid may be rejected if not quoted FOB DELIVERED or if freight charges are not indicated on bid form.
14. **PUBLIC WORKS BIDS - Completed, Signed and Properly Notarized Affidavits Required;** This applies to all solicitations for construction, alteration or demolition of public buildings or projects, in conformity with the provisions contained in LSA-RS 38:2212.9, LSA-RS 38:2212.10, LSA-RS 38:2224, and Sec 2-923.1 of the Jefferson Parish Code of Ordinances. For bidding purposes, all bidders must submit with bid submission COMPLETED, SIGNED and PROPERLY NOTARIZED Affidavits, including: Non-Conviction Affidavit, Non-Collusion Affidavit, Campaign Contribution Affidavit, Debt Disclosures Affidavit and E-Verify Affidavit. For the convenience of vendors, all affidavits have been combined into one form entitled PUBLIC WORKS BID AFFIDAVIT. This affidavit must be submitted in its original format, and without material alteration, in order to be compliant and for the bid to be considered responsive. A scanned copy of the completed, signed and properly notarized affidavit may be submitted with the bid, however, the successful bidder must submit the original affidavit in its original format and without material alteration upon contract execution. Failure to comply will result in the bid submission being rejected as non-responsive. The Parish reserves the right to award bid to the next lowest responsive and responsible bidder in this event.
15. **NON PUBLIC WORK BIDS - Completed, Signed and Properly Notarized Affidavits Required** in conformity with the provisions contained in LSA – RS 38:2224 and Sec 2-923.1 of the Jefferson Parish Code of Ordinances. For bidding purposes, all bidders must submit with bid submission COMPLETED, SIGNED and PROPERLY NOTARIZED Affidavits, including: Non-Collusion Affidavit, Debt Disclosures Affidavit and Campaign Contribution Affidavit. For the convenience of vendors, all affidavits have been combined into one form entitled NON PUBLIC WORKS BID AFFIDAVIT. This affidavit must be submitted in its original format, and without material alteration, in order to be compliant and for the bid to be considered responsive. A scanned copy of the completed, signed and properly notarized affidavit may be submitted with the bid, however, the successful bidder must submit the original affidavit in its original format and without material alteration upon contract execution. Failure to comply will result in the bid submission being rejected as non-responsive. The Parish reserves the right to award bid to the next lowest responsive and responsible bidder in this event.



## INSTRUCTIONS FOR BIDDERS AND GENERAL CONDITIONS

16. The ensuing contract for this bid solicitation may be eligible for FEMA reimbursement and/or Federal funding/reimbursement. As such, the referenced appendix will be applicable accordingly and shall be considered a part of the bid documents. All applicable certifications must be duly completed, signed and submitted as per the appendix instructions. Failure to submit applicable certifications as per the appendix instructions will result in bid rejection.

17. For this project, the Contractor shall not pay any state or local sales or use taxes on materials and equipment which are affixed and made part of the immovable property of the project or which is permanently incorporated in the project (hereinafter referred to as "applicable materials and equipment"). All purchases of applicable materials or equipment shall be made by the contractor on behalf of and as the agent of Jefferson Parish (Owner), a political subdivision of the State of Louisiana. No state and local sales and use taxes are owed on applicable materials and equipment under the provisions of Act 1029 of the 1991 Regular Session - Louisiana Revised Statute 47:301(8)(c). Owner will furnish to contractor a certificate form which certifies that Owner is not required to pay such state or local sales and use taxes, and contractor shall furnish a copy of such certificate to all vendors or suppliers of the applicable materials and equipment, and report to Owner the amount of taxes not incurred.

**It shall be the duty of every parish officer, employee, department, agency, special district, board, and commission: and the duty of every contractor, subcontractor, and licensee of the parish, and the duty of every applicant for certification of eligibility for a parish contract or program, to cooperate with the Inspector General in any investigation, audit, inspection, performance review, or hearing pursuant to Jefferson Parish Code of Ordinances Section 2-155.10(19). By submitting a bid, vendor acknowledges this and will abide by all provisions of the referenced Jefferson Parish Code of Ordinances.**

DATE: 9/27/2024

INVITATION TO BID  
THIS IS NOT AN ORDER

Page: 5

BID NO.: 50-00146159

**JEFFERSON PARISH**

PURCHASING DEPARTMENT  
P.O. BOX 9  
GRETNA, LA. 70054-0009  
504-364-2678

VENDOR: 27118 BLANK BID COPY VENDOR

PURCHASING SPECIALIST:  
DABRAHAM

As per LSA-RS 47:301 et seq., all governmental bodies are excluded from payment of sales taxes to any Louisiana taxing body. Quotations shall be based on F.O.B. Agency warehouse or jobsite, anywhere within the Parish as designated by the Purchasing Department.

JEFFERSON PARISH reserves the right to cancel all or any part of an order if not shipped promptly. No charges will be allowed for parking or cartage unless specified in quotation. The order must not be filled at a higher price than quoted. JEFFERSON PARISH reserves the right to cancel at any time and for any reason by issuing a THIRTY (30) day written notice to the contractor.

JEFFERSON PARISH is expecting all products to be new and all work to be done in workman-like manner, according to standard practices. Any deviations or alteration from the specifications must be indicated on the bid form for each item and upon request, product data for same must be submitted by the time specified by the Purchasing Department.

**DELIVERY: FOB JEFFERSON PARISH**

10 - 12 WEEKS AFTER APPROVED  
SUBMITTALS

INDICATE DELIVERY DATE ON EQUIPMENT AND SUPPLIES

INDICATE STARTING TIME (IN DAYS) FOR CONSTRUCTION WORK

N/A

INDICATE COMPLETION TIME (IN DAYS) FOR CONSTRUCTION WORK

N/A

In the event that addenda are issued with this bid, bidders **MUST** acknowledge all addenda on the bid form. Bidder must acknowledge receipt of an addendum on the bid form by placing the addendum number as indicated. Failure to acknowledge any addendum on the bid form will result in bid rejection.

Acknowledge Receipt of Addenda: NUMBER: N/A

NUMBER: \_\_\_\_\_

NUMBER: \_\_\_\_\_

NUMBER: \_\_\_\_\_

LOUISIANA CONTRACTOR'S LICENSE NO.: (if applicable) N/A

**\*\*\* ALL BIDDERS MUST COMPLETE SECTION BELOW \*\*\***

FIRM NAME:

WASTEWATER SOLUTIONS, LLC

SIGNATURE:

(Must be signed here)



TITLE:

PRESIDENT/OWNER

PRINT OR TYPE NAME:

ARTURO GARCIA

ADDRESS:

102 NE 2ND STREET SUITE 510

CITY, STATE:

BOCA RATON, FL

ZIP:

33432

TELEPHONE:

(561)462-2019

FAX:

(N/A)

EMAIL ADDRESS:

matias@wws-llc.com

TOTAL PRICE OF ALL BID ITEMS: \$ \$27,085.00

## INVITATION TO BID FROM JEFFERSON PARISH - continued

BID NO.: 50-00146159

SEALED BID

ITEM NUMBER	QUANTITY	U/M	DESCRIPTION OF ARTICLES	UNIT PRICE QUOTED	TOTALS
1	1.00	EA	<p>Purchase of Vertical Turbine Pump and Motor for the Marreo Wastwater Treatment Plant</p> <p>0001 - LAYNE AND BOWLER 10RL-5 STAGE VERTICAL TURBINE PUMP, OPEN LINE SHAFT 416 SS SHAFT AND COUPLINGS, 6 INCH COLUMN PIPE AND 6 IN.-125 LB. ANSI FLANGE, SDH 616 DISCHARGE HEAD, WATER LUBRICATED COLUMN PIPE, THREADED COLUMN, BRONZE FITTED MATERIALS OF CONSTRUCTION, 316 SS IMPELLERS, PACKING BOX TNE MEC N140 WHITE EPOXY COATING INTERIOR 2 COATS, FABRICATED STEEL SOLE PLATE 30 H.P. 1800 RPM, 230/460/3/60, VHS, NRR, PREMIUM EFFICIENT, INVERTER DUTY MOTOR WITH A STADY BUSHING FOR THE:</p> <p>PER ATTACHED SPECIFICATIONS **</p> <p>-Brand: Layne/Verti-Line  -Serial #: MA-237681-15  -Stage: 5  -Model: 10PL  -G.P.M. 500  -TDH Ft.: 168  -RPM: 1770  -Setting: 120</p> <p>MARRERO WASTEWATER TREATMENT PLANT</p> <p>DELIVER TO:  PUBLIC WORKS WAREHOUSE  1500 RIVER PARK ROAD  BRIDGE CITY, LA 70094</p>	\$ 27,085.00	\$ 27,085.00



**Wastewater Solutions LLC**  
492 SW Voltair Terrace  
Port Saint Lucie, FL 34984 US  
+19544839269  
arturo@wws-llc.com  
wws-llc.com

## Quote

### ADDRESS

Doris Abraham  
Jefferson Parish Purchasing  
Department 200 Derbigny  
Street General Government  
Building, Suite 4400 Gretna, LA  
70053  
504-364-2690  
Doris.abraham@jeffparish.gov

2972D

PURCHASE OF VERTICAL TURBINE PUMP AND MOTOR  
FOR THE MARRERO WASTEWATER TREATMENT PLANT  
BID NUMBER 50-00146159

**QUOTE # 11419**

**DATE 10/04/2024**

### DELIVERY:

10 - 12 WEEKS

DESCRIPTION	QTY	RATE	AMOUNT
BOESCH SUBMERSIBLE TURBINE PUMP MODEL 9WL-1C ( 4 STAGES )	1	27,085.00	27,085.00
CONDITIONS: 500 GPM AT 168 FT TDH 30 HP 3/60/230V-460V US ELECTRICAL MOTOR VHS TEFC NRR PREMIUM EFFICIENT, INVERTER DUTY, SPACE HEATERS 6" X 6" X 16.5" FABRICATED DISCHARGE HEAD / WATER LUB 24" X 24" X 1-1/2" FABRICATED SOLE PLATE WCA SUCTION FLANGE 6 PROD LUB STUFFING BOX ASSY MEDIAN UPP SHAFT TO DRIVE W/ NUT & KEY WAY-SS416 1-3/16" W LUB SS-416 SHAFT AND CPLG 1-3/16" - X 10 FT COLUMN PIPE W/COUPLING 6" 10 FT SCH- 0.28-40 9WL-1C ( 4 STAGES ) BOWL ASSEMBLY / PROD LUB STRAINER BASKET TYPE / 304 SS CONSTRUCTION			
ALL PUMP SURFACES COATED WITH TNEMEC POTA POX PLUS N140 SERIES NSF 61 CERTIFIED			
SEE ATTACHED SCOPE AND SPECIFICATIONS.			
A FORMAL SET OF SUBMITTALS WILL BE PROVIDED AFTER INTENT TO AWARD IS RECEIVED.			
WARRANTY: 12 MONTHS FROM THE DATE OF STARTUP OR 18 MONTHS FROM THE DATE OF DELIVERY. WHICHEVER OCCURS FIRST.			

DESCRIPTION	QTY	RATE	AMOUNT
-------------	-----	------	--------

DELIVERY INCLUDED AS PER SPECIFICATIONS.

PURCHASE OF VERTICAL TURBINE PUMP AND MOTOR FOR THE MARRERO WASTEWATER TREATMENT PLANT BID NUMBER 50-00146159	TOTAL		<b>\$27,085.00</b>
--	-------	--	--------------------

WASTEWATER SOLUTIONS LLC  
CAGE CODE: 7TWY1  
DUNS NUMBER: 079918568  
EIN: 47-1877641

Accepted By

Accepted Date

PURCHASE OF VERTICAL TURBINE PUMP AND MOTOR FOR THE  
MARRERO WASTEWATER TREATMENT PLANT

BID NUMBER 50-00146159



www.BoeschPumps.com

Pump:

Size:	9WH-1C (stages: 4)	Dimensions:
Type:	LINE W_60 Hz	Suction: ---
Synch Speed:	1800 rpm	Discharge: ---
Dia:	6.46 in	Vertical Turbine:
Curve:	ETWBBEE-18	Eye Area: 12.6 in <sup>2</sup>
Impeller:	9WH-1C	Bowl Size: 9.25 in
Specific Speeds:	Ns: 2331	Max Lateral: 0.53 in
	Nss: 2331	Thrust K Factor: 6 lb/ft

Search Criteria:

Flow:	500 US gpm	Near Miss:	---
Head:	168 ft	Static Head:	0 ft

Fluid:

Name:	Water		
SG:	1	Vapor Pressure:	0.256 psi a
Density:	62.4 lb/ft <sup>3</sup>	Atm Pressure:	14.7 psi a
Viscosity:	1.1 cP		
Temperature:	60 °F	Margin Ratio:	1

Pump Limits:

Temperature:	167 °F	Sphere Size:	0.5 in
Wkg Pressure:	400 psi g		

Motor:

Standard:	NEMA	Size:	30 hp
Enclosure:	WPI	Speed:	1800 rpm
Frame:	286TPA		
Sizing Criteria:	Max Power on Design Curve		

Pump Selection Warnings:

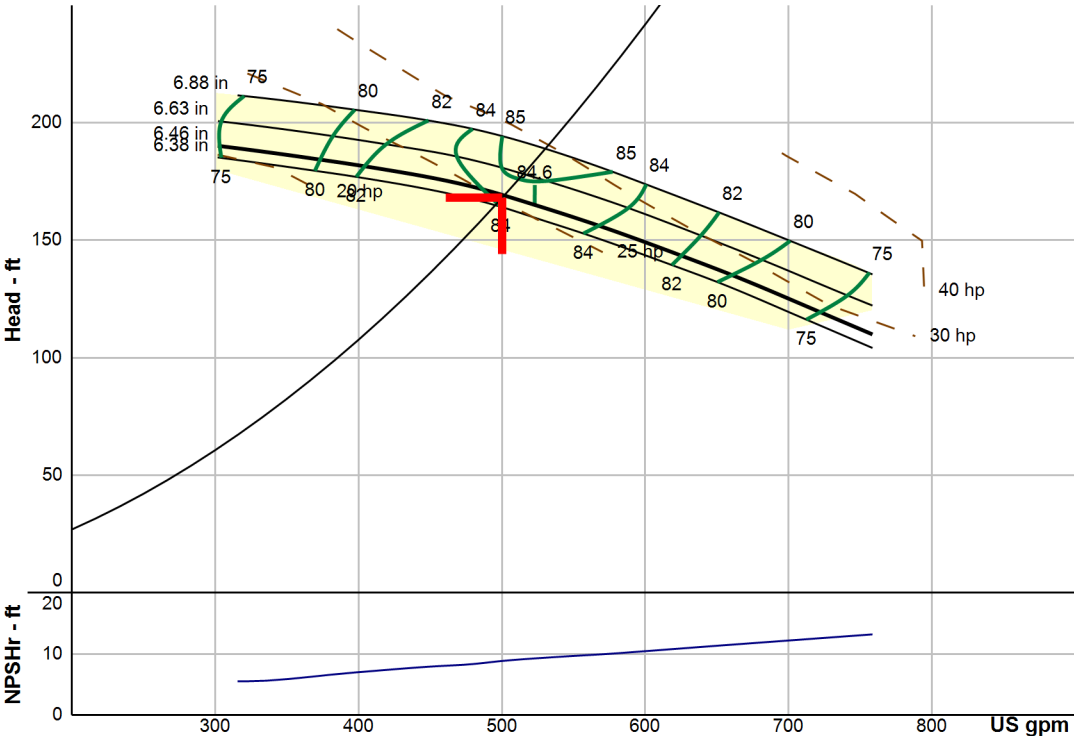
None

--- Duty Point ---

Flow: 501 US gpm  
Head: 169 ft  
Eff: 84.2%  
Power: 25.4 hp  
NPSHr: 8.86 ft  
Speed: 1770 rpm

--- Design Curve ---

Shutoff Head: 198 ft  
Shutoff dP: 85.7 psi  
Min Flow: 110 US gpm  
BEP: 84.6% @ 523 US gpm



Performance Evaluation:

Flow	Speed	Head	Efficiency	Power	NPSHr
US gpm	rpm	ft	%	hp	ft
600	1770	149	82.9	27.2	10.4
500	1770	169	84.2	25.4	8.83
400	1770	182	81.7	22.5	7
300	1770	190	66.2	21.6	5.5
200	1770	193	---	---	5.5



**PURCHASE OF VERTICAL TURBINE PUMP AND MOTOR FOR THE MARRERO WASTEWATER  
TREATMENT PLANT  
BID NUMBER 50-00146159**

**PUMP BRAND: BOESCH PUMPS  
DUTY POINT: 500 GPM AT 168 FT TDH  
PUMP MODEL: 9WH-1C ( 4 STAGES )  
EFFICIENCY: 84.20%**

**MOTOR SPECIFICATIONS**

BRAND	US MOTORS ( NIDEC )
HP RATING	30 HP
SPEED	1800 RPM
TYPE	VHS
ENCLOSURE	TEFC
COUPLING TYPE	NRR
INSULATION CLASS	F
SF	1.15
VOLTAGE	3/60/230V-460V
EFFICIENCY	PREMIUM EFFICIENT
OPERATION	INVERTED DUTY
ANTICONDENSATION DEVICE	SPACE HEATERS

**DISCHARGE HEAD SPECIFICATIONS**

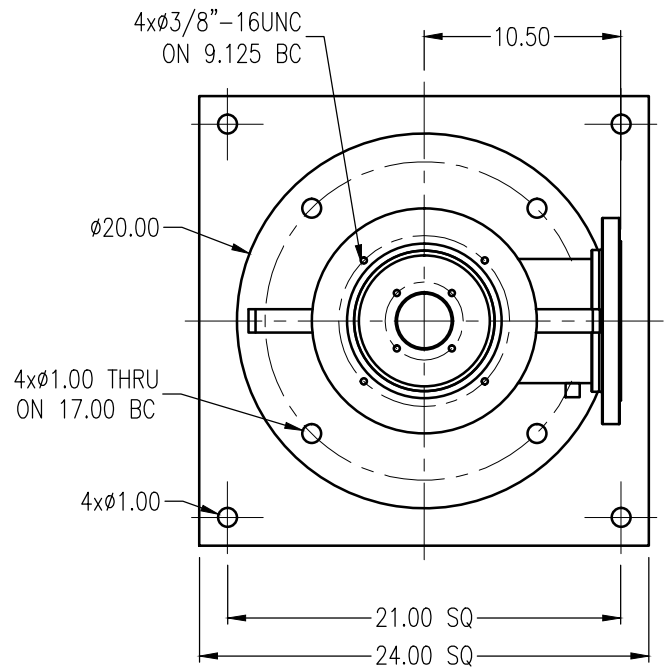
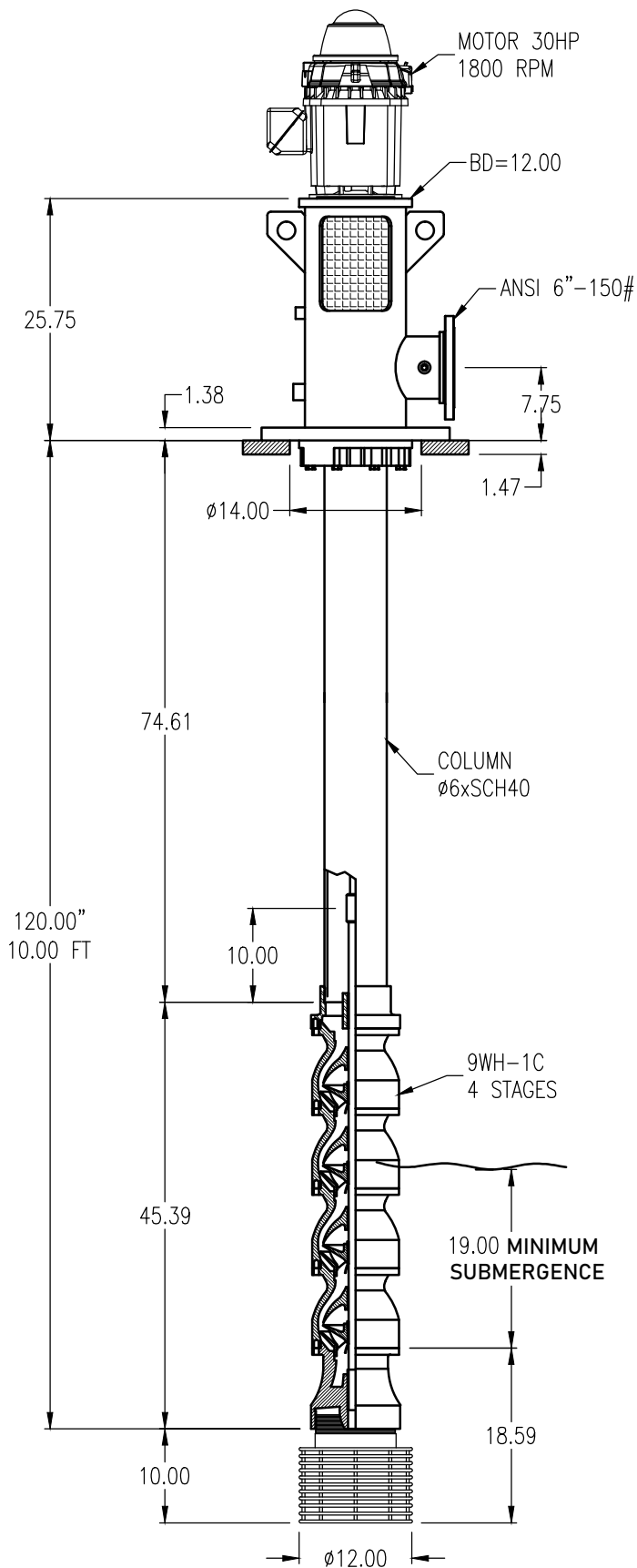
HEAD TYPE	6" X 6" X 16.5" FABRICATED DISCHARGE HEAD / WATER LUB
DISCHARGE FLANGE SIZE	6" #150
GUARD TYPE	OSHA GUARD
DISCHARGE HEAD SOLE PLATE	24" X 24" X 1-1/2" / ASTM A 36
SEAL TYPE	PACKED STUFFING BOX
INTERNAL AND EXTERNAL COATING	TNEMEC POTA POX PLUS N140 SERIES NSF 61 CERTIFIED

**COLUMN SPECIFICATIONS**

TYPE	THREADED / ASTM A 53 / WATER LUB
LINESHAFT	416 SS / 1-3/16"
BOLTING	304 SS
MAX FRICTION LOSS	5 FEET / 100 FT
DIAMETER	6"
TOTAL PUMP LENGTH ( TPL )	130" ( CAN BE MODIFIED UPON REQUEST )
INTERNAL AND EXTERNAL COATING	TNEMEC POTA POX PLUS N140 SERIES NSF 61 CERTIFIED

**BOWL ASSEMBLY SPECIFICATIONS**

BOWL CASTING	ASTM A 48 CLASS 30
IMPELLERS	316 SS
BUSHINGS	VESCONITE
BOLTING	304 SS
PUMP SHAFT	416 SS
STRAINER	304 SS / BASKE TYPE
INTERNAL AND EXTERNAL COATING	TNEMEC POTA POX PLUS N140 SERIES NSF 61 CERTIFIED



**ALL DIMENSIONS CAN BE MODIFIED UPON REQUEST**

TECHNICAL DATA	
CAPACITY:	500.00 GPM
T D H:	168.00 FT
No STAGES:	4
LUBRICATION:	WATER
SPEED RPM:	1770
POWER HP:	27.20
EFFICIENCY %:	85.00
<b>BOESCH</b> DIMENSIONS ONLY ILLUSTRATIVE, NOT TO MANUFACTURING	CLIENT: WASTEWATER SOLUTIONS
	MODEL: 9WH-1C
	RC-06-PSG-7.2
INCH	DATE: 04/10/2024   REV: 0



# NIDEC MOTOR CORPORATION

8050 WEST FLORISSANT AVE.  
ST. LOUIS, MO 63136



DATE: 7/26/2022

P.O. NO.: FU31  
Order/Line NO.: 25776 MN 100

TO:

Model Number: FU31  
Catalog Number: CHT30V2BLF  
End Of Configuration  
LLC, LAST SCREEN

REVISIONS:  
(NONE)

**ALL DOCUMENTS HEREIN ARE CONSIDERED CERTIFIED BY NIDEC MOTOR CORPORATION.  
THANK YOU FOR YOUR ORDER AND THE OPPORTUNITY TO SERVE YOU.**

## Features:

Horsepower ..... 00030.00~00000.00 ~ KW: 22.38  
Enclosure ..... TEFC  
Poles ..... 04~00 ~ RPM: 1800~0  
Frame Size ..... 286~TPA  
Phase/Frequency/Voltage.. 3~060~230/460 ~ Random Wound  
Service Factor ..... 1.15  
Insulation Class ..... Class "H" ~ Insulife 2000  
Altitude In Feet (Max) .. 3300 Ft.(1000 M) ~ +40 C  
Efficiency Class ..... Premium Efficiency  
Application ..... Vertical Centrifugal Pump  
Inverter Duty NEMA MG1 Part 31  
Customer Part Number ....  
12" Base ~ Coupling Size: 1" Bore, 1/4" Key  
Non-Reverse Ratchet ~ Steady Bushing Not Requested  
Pricebook Thrust Value (lbs).. 3300  
Customer Down Thrust (lbs) ... 3300  
Customer Shutoff Thrust (lbs).  
Up Thrust (lbs): ~  
Inverter Duty Rating Details:  
Load Type (Base Hz & Below) .. Variable Torque  
Speed Range (Base Hz & Below). 10:1  
Temperature Rise (Sine Wave): "B" Rise @ 1.0 SF (Resist)  
Starting Method ..... PWS (Dual Volt-Low Volt Only)  
Duty Cycle ..... Continuous Duty  
Efficiency Value ..... 93.6 % ~ NEMA Nominal  
Load Inertia: NEMA ~ Standard Inertia: 144 LB-FT<sup>2</sup>  
Number Of Starts Per Hour: NEMA  
Motor Type Code ..... TUCI  
Rotor Inertia (LB-FT<sup>2</sup>) ..... 3.55 LB-FT<sup>2</sup>  
Qty. of Bearings PE (Shaft) ..... 1  
Qty. of Bearings SE (OPP) ..... 1  
Bearing Number PE (Shaft) ..... 7311 BEP  
Bearing Number SE (OPP) ..... 6211-J/C3

Nidec trademarks followed by the ® symbol are registered with the U.S. Patent and Trademark Office.

# NIDEC MOTOR CORPORATION

8050 WEST FLORISSANT AVE.  
ST. LOUIS, MO 63136



**DATE:** 7/26/2022

**P.O. NO.:** FU31  
**Order/Line NO.:** 25776 MN 100

**TO:**

**Model Number:** FU31  
**Catalog Number:** CHT30V2BLF  
End Of Configuration  
LLC, LAST SCREEN

**REVISIONS:**  
(NONE)

**ALL DOCUMENTS HEREIN ARE CONSIDERED CERTIFIED BY NIDEC MOTOR CORPORATION.  
THANK YOU FOR YOUR ORDER AND THE OPPORTUNITY TO SERVE YOU.**

## **Accessories:**

Shaft Slinger - Pulley End  
Corro-Duty  
CCW Rot. FODE w/Rotation Arrow  
Ground Lug In Conduit Box  
Aegis Grd Ring/Grd Term on Frm  
115 Volt Space Heaters  
Special Balance  
Thermostats - Normally Closed  
N/A  
MIN 500 RPM WITH NRR  
Standard Leadtime: NA  
Est. Weight (lbs ea): 520 ~ F.O.B.:

**USE THE DATA PROVIDED BELOW TO SELECT THE APPROPRIATE DIMENSION PRINT**

<b>Horsepower</b>	30
<b>Pole(s)</b>	04
<b>Voltage(s)</b>	460-230
<b>Frame Size</b>	286TPA
<b>Outlet Box AF</b>	3.25
<b>Outlet Box AA</b>	2.00

Nidec trademarks followed by the ® symbol are registered with the U.S. Patent and Trademark Office.

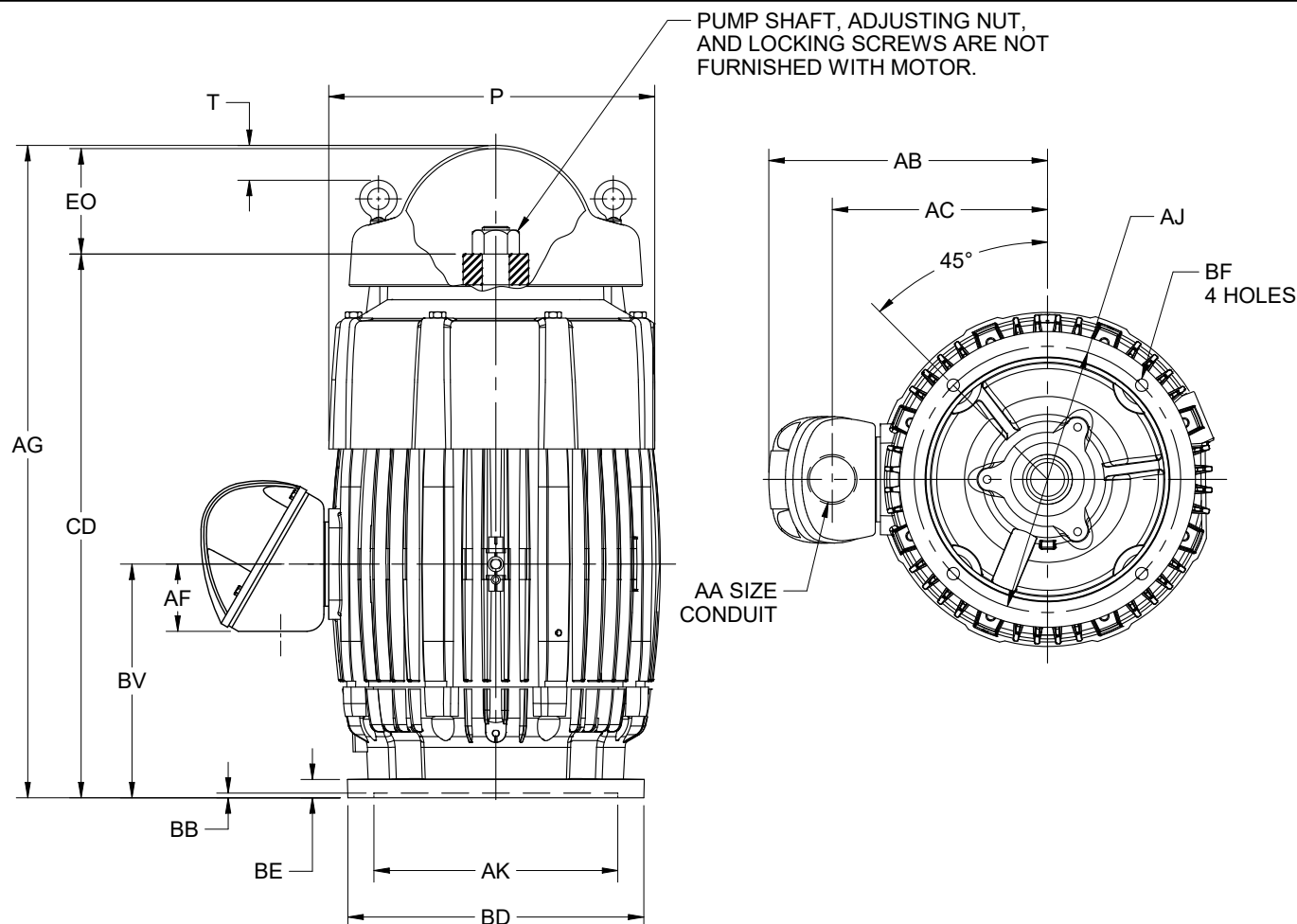
EFFECTIVE:  
**13-AUG-20**

SUPERSEDES:  
**08-MAY-18**

**DIMENSION PRINT**  
**TEFC - CORRODUTY WITH OVERSIZED O/B**  
**FRAME: 280TP, TPA, TPH**  
**BASIC TYPE: TUCI**

PRINT:  
**09-3340**

SHEET:  
**1 OF 1**



ALL DIMENSIONS ARE IN INCHES AND MILLIMETERS

UNITS	P <sup>2</sup>	T <sup>3</sup>	AA	AB	AC	AF	AG	BE	BV	CD	EO
IN	14.75	-1.31	2 NPT	13.19	9.81	3.25	32.63	.91	11.19	26.56	5.88
MM	375	-33		335	249	83	829	23	284	675	149

FRAME	UNITS	AJ	AK	BB MIN	BD MAX	BF
284, 286TP	IN	9.125	8.250	.19	10.00	.44
	MM	231.78	209.55	5	254	11
284, 286TPA	IN	9.125	8.250	.19	12.00	.44
	MM	231.78	209.55	5	305	11
284, 286TPH	IN	14.750	13.500	.25	16.50	.69
	MM	374.65	342.90	6	419	16

1. ALL ROUGH CASTING DIMENSIONS MAY VARY BY .25" DUE TO CASTING AND/OR FABRICATION VARIATIONS.
2. LARGEST MOTOR WIDTH.
3. (-) MINUS SIGN INDICATES EYEBOLT IS BELOW THE TOP OF UNIT.
4. CONDUIT OPENINGS MAY BE LOCATED IN STEPS OF 90 DEGREES REGARDLESS OF LOCATION. STANDARD AS SHOWN WITH CONDUIT OPENING DOWN.
5. TOLERANCES SHOWN ARE IN INCHES ONLY.

TOLERANCES	8.250 AK	13.500 AK
"AK" DIMENSION	+.003; -.000	+.005; -.000
FACE RUNOUT	.004 T.I.R.	.007 T.I.R.
PERMISSIBLE ECCENTRICITY OF MOUNTING RABBIT	.004 T.I.R.	.007 T.I.R.

**Nidec Motor Corporation**  
**St. Louis, Missouri**

INFORMATION DISCLOSED ON THIS DOCUMENT  
IS CONSIDERED PROPRIETARY AND SHALL NOT BE  
REPRODUCED OR DISCLOSED WITHOUT WRITTEN  
CONSENT OF NIDEC MOTOR CORPORATION



ISSUED BY  
**D. CISNEROS**  
APPROVED BY  
**E. LUNA**

# NAMEPLATE DATA

CATALOG NUMBER:		CHT30V2BLF		NAMEPLATE PART #:		422707-005	
MODEL	FU31	FR	286TPA	TYPE	TUCI	ENCL	TEFC
SHAFT END BRG		7311 BEP - QTY 1		OPP END BRG		6211-J/C3 - QTY 1	
PH	3	MAX AMB	40 C	ID#			
INSUL CLASS	H	Asm. Pos.			DUTY	CONT	
HP	30	RPM	1775	HP		RPM	
VOLTS	460	230		VOLTS			
FL AMPS	35.0	71.0		FL AMPS			
SF AMPS	41.0	81.0		SF AMPS			
SF	1.15	DESIGN	B	CODE	G		
NEMA NOM EFFICIENCY	93.6	NOM PF	84.7	KiloWatt	22.4		
GUARANTEED EFFICIENCY	92.4	MAX KVAR		HZ	60		

## HAZARDOUS LOCATION DATA (IF APPLICABLE):

DIVISION		CLASS I		GROUP I	
TEMP CODE		CLASS II		GROUP II	



## VFD DATA (IF APPLICABLE):

VOLTS	460	230	AMPS	36.8	74.6
TORQUE 1	88.7LB-FT		TORQUE 2		
VFD LOAD TYPE 1	VT/PWM		VFD LOAD TYPE 2		
VFD HERTZ RANGE 1	6-60		VFD HERTZ RANGE 2		
VFD SPEED RANGE 1	180-1800		VFD SPEED RANGE 2		
SERVICE FACTOR	1.00		FL SLIP		
NO. POLES			MAGNETIZING AMPS		
VECTOR MAX RPM			Encoder PPR		
Radians / Seconds			Encoder Volts		

## TEAO DATA (IF APPLICABLE):

HP (AIR OVER)		HP (AIR OVER M/S)		RPM (AIR OVER)		RPM (AIR OVER M/S)	
FPM AIR VELOCITY		FPM AIR VELOCITY M/S		FPM AIR VELOCITY SEC			

**ADDITIONAL NAMEPLATE DATA:**

Decal / Plate	WD=159833,CP=132839	Customer PN	
Notes		Non Rev Ratchet	NRR
Max Temp Rise	80C RISE/RES@1.00SF	OPP/Upper Oil Cap	GREASE
Thermal (WDG)	OVER TEMP PROT 2	SHAFT/Lower Oil Cap	GREASE
Altitude		Usable At	
Regulatory Notes		Regulatory Compliance	
COS		Marine Duty	
Balance	0.08 IN/SEC	Arctic Duty	
3/4 Load Eff.	94.1	Inrush Limit	
Motor Weight (LBS)	520	Direction of Rotation	
Sound Level		Special Note 1	
Vertical Thrust (LBS)	3300	Special Note 2	
Thrust Percentage	100% HT	Special Note 3	
Bearing Life		Special Note 4	
Starting Method		Special Note 5	
Number of Starts		Special Note 6	
200/208V 60Hz Max Amps		SH Max. Temp.	
190V 50 hz Max Amps		SH Voltage	SH VOLTS=115V
380V 50 Hz Max Amps		SH Watts	SH WATTS= 72W
NEMA Inertia		Load Inertia	
Sumpheater Voltage		Sumpheater Wattage	
Special Accessory Note 1		Special Accessory Note 16	
Special Accessory Note 2		Special Accessory Note 17	
Special Accessory Note 3		Special Accessory Note 18	
Special Accessory Note 4		Special Accessory Note 19	
Special Accessory Note 5		Special Accessory Note 20	
Special Accessory Note 6		Special Accessory Note 21	
Special Accessory Note 7		Special Accessory Note 22	
Special Accessory Note 8		Special Accessory Note 23	
Special Accessory Note 9		Special Accessory Note 24	
Special Accessory Note 10		Special Accessory Note 25	
Special Accessory Note 11		Special Accessory Note 26	
Special Accessory Note 12		Special Accessory Note 27	
Special Accessory Note 13		Special Accessory Note 28	
Special Accessory Note 14		Special Accessory Note 29	
Special Accessory Note 15		Special Accessory Note 30	MIN 500 RPM WITH NRR
Heater in C/B Voltage		Heater in C/B Watts	
Zone 2 Group		Division 2 Service Factor	
Note 1		Note 2	
Note 3		Note 4	
Note 5		Note 6	
Note 7		Note 8	
Note 9		Note 10	
Note 11		Note 12	
Note 13		Note 14	
Note 15		Note 16	
Note 17		Note 18	
Note 19		Note 20	
Note 21		Note 22	

**NIDEC MOTOR CORPORATION**  
ST. LOUIS, MO

TYPICAL NAMEPLATE DATA  
ACTUAL MOTOR NAMEPLATE LAYOUT MAY VARY  
SOME FIELDS MAY BE OMITTED



Nidec trademarks followed by the ® symbol are registered with the U.S. Patent and Trademark Office.

# MOTOR PERFORMANCE

MODEL NO.	CATALOG NO.	PHASE	TYPE	FRAME
FU31	CHT30V2BLF	3	TUCI	286TPA
ORDER NO.		25776	LINE NO.	
MPI:			245772	245773
HP:			30	30
POLES:			4	4
VOLTS:			460	230
HZ:			60	60
SERVICE FACTOR:			1.15	1.15
EFFICIENCY (%):				
S.F.			93.1	93.1
FULL			93.6	93.6
3/4			94.1	94.1
1/2			93.7	93.7
1/4			90.4	90.4
POWER FACTOR (%):				
S.F.			85.6	85.6
FULL			84.7	84.7
3/4			81.1	81.1
1/2			72.7	72.7
1/4			51.8	51.8
NO LOAD			5	5
LOCKED ROTOR			39.4	39.4
AMPS:				
S.F.			41	81
FULL			35	71
3/4			27.6	55
1/2			20.6	41
1/4			15	30
NO LOAD			12.7	25.3
LOCKED ROTOR			228	455
NEMA CODE LETTER			G	G
NEMA DESIGN LETTER			B	B
FULL LOAD RPM			1775	1775
NEMA NOMINAL / EFFICIENCY (%)			93.6	93.6
GUARANTEED EFFICIENCY (%)			92.4	92.4
MAX KVAR			8.6	8.6
AMBIENT (°C)			40	40
ALTITUDE (FASL)			3300	3300
SAFE STALL TIME-HOT (SEC)			28	28
SOUND PRESSURE (DBA @ 1M)			0	0
TORQUES:				
BREAKDOWN{% F.L.}			282	282
LOCKED ROTOR{% F.L.}			210	210
FULL LOAD{LB-FT}			88.7	88.7

NEMA Nominal and Guaranteed Efficiencies are up to 3,300 feet above sea level and 25 ° C ambient

The Above Data Is Typical, Sinewave Power Unless Noted Otherwise

**NIDEC MOTOR CORPORATION**  
ST. LOUIS, MO



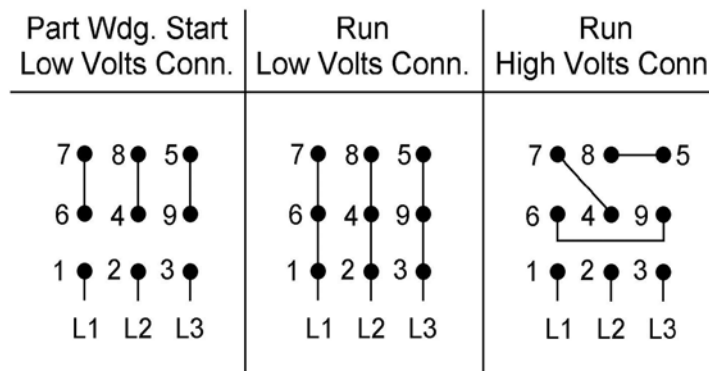
Nidec trademarks followed by the ® symbol are registered with the U.S. Patent and Trademark Office.



159833

### Motor Wiring Diagram

9 Lead, Dual Voltage, Delta Connection  
Part Winding Start (PWS) on Low Voltage



Motor good for across the line starting

Per NEMA MG1 1998-1.75, "A Part-winding Start motor is one which certain specially designed circuits of each phase of the primary winding are initially connected to the supply line. The remaining circuit or circuits of each phase are connected to the supply in parallel with initially connected circuits, at a predetermined point in the starting operation." This is intended to limit the inrush current required to start the motor. NEMA MG1 1998-14.38 states that the motor may not accelerate to full speed in part-winding and may be noisier than when on full winding.

Motors designed by US Motors for Part-winding Start also be used for across the line starting using only the full winding connection. Damage will occur if the motor is operated with load for more than 2 seconds on Part-winding without transition to full winding.

To reverse direction of rotation, interchange leads L1 & L2.

Each lead may have one or more cables comprising that lead. In such case, each cable will be marked with the appropriate lead number.



**159833**

## **SPECIAL INFORMATION REGARDING PART WINDING STARTING**

This motor is not designed to fully accelerate when started with the part winding start connection shown on the motor connection diagram. In order to avoid damaging the motor when it is started with the part winding start connection, set timers so that the motor starter switches the motor connection from start to run within two seconds from the time that the motor is initially energized. The motor is not expected to fully accelerate before the motor connection is switched to run, but the momentary operation on the start connection should allow time for automatic voltage regulators on the power system to compensate for voltage dip resulting from the high current draw of the motor during acceleration. Thus, voltage dip in the power system will be minimized through proper use of the part winding start connection. Once the motor has been switched over to the run connection, it will finish accelerating up to full speed.

During the time that the motor is operated on the part winding start connection, it is expected that the motor may be noisier than when operated on the run connection and it is also expected that the line amp unbalance between phases may be approximately 100% to 150%. This is due to the adverse effect of harmonics that result from the unbalanced magnetic circuit on the part winding start connection.

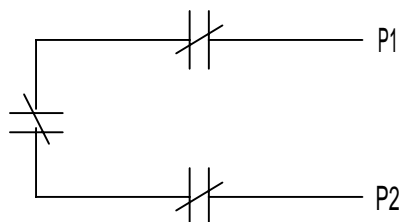
For further information regarding characteristics of polyphase induction motors when operated on a part winding start connection, refer to NEMA Publication MG 1-1998 Part 14.38.



## THERMOSTATS

1. MOTOR IS EQUIPPED WITH QTY-3 (1 PER PHASE) NORMALLY CLOSED THERMOSTATS.  
THERMOSTATS ARE SET TO OPEN AT HIGH TEMPERATURE.
2. CONTACT RATINGS FOR THERMOSTATS: 120-600 VAC, 720 VA

### N. C. THERMOSTATS



NOTE: THERMOSTATS LEADS MAY BE LOCATED IN EITHER THE MAIN OUTLET BOX OR IF SO EQUIPPED, AN AUXILIARY BOX.

### ACCESSORY LISTING

QTY-3 N.C. THERMOSTATS

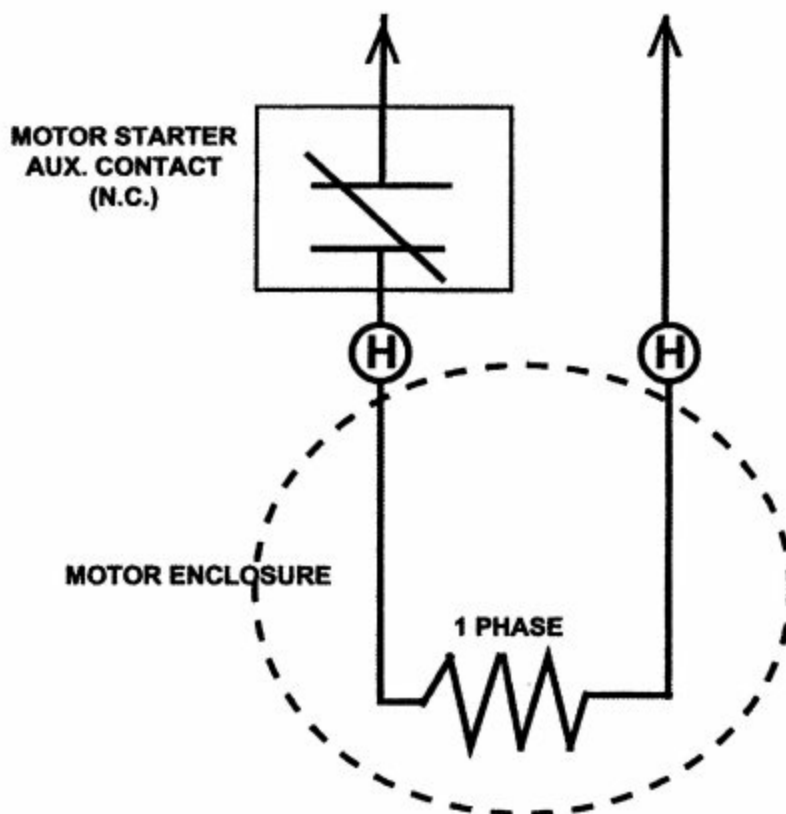
REVISION DESCRIPTION FOR: <b>MISC</b> <b>STL0211 - UPDATED FORMAT .</b>  MATERIAL: <b>---</b>  MUST BE COMPLIANT TO RoHS DIRECTIVE EU 2002/95/IEC AND REGULATION EC 1907/2006 (REACH) AS AMENDED	SCALE	UNITS	TITLE		NIDEC MOTOR CORPORATION		
	<b>NONE</b>	<b>IN</b>					
	TOLERANCES ON DIMENSIONS (UNLESS OTHERWISE SPECIFIED)		CUSTOMER CONNECTION DIAGRAM		REVISION DATE <b>24-FEB-11</b>		
	<b>INCHES</b>	<b>mm</b>					
	ANGLES $X^{\circ} = \pm 1^{\circ}$		ISSUED BY <b>R. KING</b>	APPROVED BY <b>C. CADE</b>			
			CODE	DWG NO. <b>0834066</b>	REV <b>G</b>	SHEET NUMBER <b>1 OF 1</b>	DWG SIZE <b>A</b>



970798

# SPACE HEATER CONNECTION DIAGRAM

SPACE HEATER LEADS MAY BE LOCATED IN EITHER THE MAIN OUTLET BOX  
OR IF SO EQUIPPED, AN AUXILIARY BOX



THIS EQUIPMENT IS SUPPLIED WITH ANTI-  
CONDENSATION HEATERS. HEATERS  
SHOULD BE ENERGIZED WHEN EQUIPMENT  
IS NOT OPERATING TO PROTECT UNIT BY  
PREVENTING INTERNAL CONDENSATION.  
CONNECT THE "H" OR HEATER  
LEADS TO

**115V** VOLTS

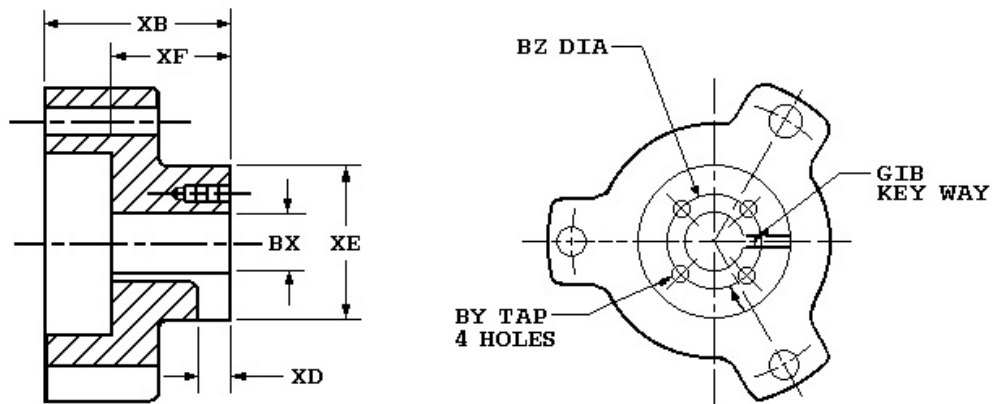
**72W** WATTS RATING

**SPACE HEATER NAMEPLATE (ON MOTOR)**

Revision: 7/30/2008  
Mike Cullen

# Vertical HOLLOSHAFT Coupling Dimensions

## Standard Coupling Dimensions



Coupling Part Number	112000
BX Nominal	1
Actual Bore	1.001
BY	10-32
BZ	1 3/8
XB	2 9/16
XD	13/32
XE	2 5/8
XF	1 5/8
SQ. KEY	1/4

### Notes:

1. All Rough casting dimensions may vary by 0.25" due to casting variations.
2. All tapped holes are Unified National Course, Right Hand thread.
3. Coupling bore dimension "BX" is machined with a tolerance of - .000", +.001" up to 1.50" bore inclusive. Larger bores: -.000", +.002".



Copyright © 2010 Nidec Motor Corporation. All rights reserved.

## TYPICAL REED CRITICAL FREQUENCY DATA

Note: Motor RCF Test Data can be provided at time of motor shipment through special test.  
Please contact your Nidec Motor Corporation representative for more information.

MODEL NO: FU31  
CATALOG NO: CHT30V2BLF

Frame: 286TPA Type: TUCI

REED CRITICAL FREQUENCY:	87	HZ
CENTER OF GRAVITY:	12.6	IN
DEFLECTION @ CENTER OF GRAVITY:	0.0013	IN
UNIT WEIGHT:	540	LBS
BASE DIAMETER:	ALL	IN
TOLERANCE ON RCF VALUE:	20%	
DATE:	7/26/2022	



Copyright © 2010 Nidec Motor Corporation. All rights reserved.

## VESCONITE PUMPS

Vesconite has been used for decades in a wide range of specialized pump bushing applications. The material thrives in water and exhibits excellent dimensional stability, with zero delamination. The result is low downtime and associated hassle factor. Its friction coefficient range of 0.1 – 0.2 allows for dry starting – an issue commonly associated with high wear rates in traditional bushing materials. Corrosion of the bushing is entirely eliminated with Vesconite, Vesconite Hilube is recommended for most pump applications.

### BENEFITS FOR PUMPS

**Vesconite does not swell or distort in water.**

**Vesconite does not delaminate.**

**Vesconite does not corrode.**

**Vesconite requires no lubrication.**

**Vesconite is resistant to oils and fuels.**

**Vesconite bushings are easy to fit and remove.**

**Vesconite prolongs shaft life**

### COMMON PUMP APPLICATIONS



- Lineshaft bushings in vertical turbine pumps.
- Support bushings and wear rings in pumps.
- Stuffing box bushings in vertical turbine pumps.
- Impeller support bushings in sump pumps.

### MATERIAL COMPARISON



In the case of pump impeller and case wear rings, tight clearances are required. Swelling and distortion can be an issue with traditional bushing materials. This is not the case with Vesconite due to its virtually zero water absorption rate and dimensional stability.

Unlike bronze or rubber bushings, fresh and saltwater serves as an effective lubricant for Vesconite. This makes it an ideal material for pump bowl bushings and stuffing box bushings.

## VESCONITE TYPICAL PROPERTIES

	METRIC	IMPERIAL
Density	1.38 g.ml <sup>-1</sup>	1.38
Melting point	260°C	500°F
Hardness (Shore D)	84	84
Tensile strength at yield (ASTM D-638)	65 MPa	9,400 psi
Tensile strength at break	62 MPa	9,000 psi
Tangent modulus of elasticity (ASTM D-790)	3400 MPa	493,000 psi
Flexural yield strength	120 MPa	17,400 psi
Deflection temperature at 1.85MPa / 268 psi	93°C	200°F
Modulus of elasticity under compression	2290 MPa	332,000 psi
Compression strength at yield	92 MPa	13,300 psi
Shear strength	49 MPa	7,100 psi
Notched impact strength charpy (ASTM D-256)	33 J.m <sup>-1</sup>	0.6 ft-lb/in
Notched impact strength IZOD	16 J.m <sup>-1</sup>	0.3 ft-lb/in
Heat conductivity	0.3 WK <sup>-1</sup> .m <sup>-1</sup>	2 Btu-in/ft <sup>2</sup> /hr/ <sup>0</sup> F
Coefficient of linear thermal expansion	6x10 <sup>-1</sup> mm.mm <sup>-1</sup> .°C <sup>-1</sup>	3.3x10 <sup>-5</sup> in/in/ <sup>0</sup> F
Maximum moisture absorption in water at 20°C / 68°F	0.5%	0.5%
Equilibrium moisture absorption in air (50% RH, 23°C / 73°F)	0.2%	0.2%
Dynamic unlubricated friction coefficient on steel	0.12 - 0.20	0.12 -0.20
Dielectric strength	14kV.mm <sup>-1</sup>	360kV.in <sup>-1</sup>
Gamma ray resistance 50% loss of properties	100 Mrads	

The above data should be taken for indicative purposes. Physical properties may be altered to some extent by processing conditions.

# POTA-POX® PLUS SERIES N140

## PRODUCT PROFILE

**GENERIC DESCRIPTION** Polyamidoamine Epoxy

**COMMON USAGE** Innovative potable water coating which offers high-build edge protection and allows for application at a wide range of temperatures (down to 35°F or 2°C with 44-700 Accelerator). For use on the interior and exterior of steel or concrete tanks, reservoirs, pipes, valves, pumps and equipment in potable water service.

**COLORS** 1211 Red, 1255 Beige, 00WH Tnemec White, 15BL Tank White, 35GR Black and 39BL Delft Blue. **Note:** Epoxies chalk with extended exposure to sunlight. Lack of ventilation, incomplete mixing, miscatalyzation or the use of heaters that emit carbon dioxide and carbon monoxide during application and initial stages of curing may cause yellowing to occur.

**SPECIAL QUALIFICATIONS** Certified by **NSF International** in accordance with **ANSI/NSF Std. 61**. Ambient air cured Series N140 (with or without 44-700 Epoxy Accelerator) is qualified for use on tanks and reservoirs of 1,000 gallons (3,785 L) capacity or greater, pipes 18 inches (46 cm) in diameter or greater, valves four (4) inches (10 cm) in diameter or greater and fittings four (4) inches (10 cm) in diameter or greater. Conforms to **AWWA D 102 Inside Systems No. 1 and No. 2** (with or without 44-700). Conforms to **AWWA C 210** (without 44-700). Contact your Tnemec representative for systems and additional information. A two-coat system at 4.0-6.0 dry mils (100-150 dry microns) per coat passes the performance requirements of MIL-PRF-4556F for fuel storage. Reference the "Search Listings" section of the NSF website at [www.nsf.org](http://www.nsf.org) for details on the maximum allowable DFT.

**PERFORMANCE CRITERIA** Extensive test data available. Contact your Tnemec representative for specific test results.

## COATING SYSTEM

**SURFACER/FILLER/PATCHER** 215, 217, 218

**PRIMERS** Self-priming, 22, 91-H<sub>2</sub>O, 94-H<sub>2</sub>O, L140, L140F, N140F, V140, V140F, 141

**TOPCOATS** **Interior:** Series 22, FC22, L140, L140F, N140, N140F, V140, V140F, 141, 406.  
**Exterior:** Series 27, 66, L69, L69F, N69, N69F, V69, V69F, 72, 73, L140, L140F, N140, N140F, V140, V140F, 156, 157, 161, 175, 180, 181, 446, 740, 750, 1028, 1029, 1074, 1074U, 1075, 1075U, 1077, 1078, 1080, 1081. Refer to COLORS on applicable topcoat data sheets for additional information. **Note:** The following recoat times apply for Series N140: Immersion Service—Surface must be scarified by blasting with fine abrasive after 60 days. Atmospheric Service—After 60 days, scarification or an epoxy tie-coat is required. When topcoating with Series 740 or 750, recoat time for N140 is 21 days. Contact your Tnemec representative for specific recommendations.

## SURFACE PREPARATION

**PRIMED STEEL** **Immersion Service:** Scarify the epoxy prime coat surface by abrasive blasting with fine abrasive before topcoating if it has been exterior exposed for 60 days or longer and N140 is the specified topcoat.

**STEEL** **Immersion Service:** SSPC-SP10/NACE 2 Near-White Blast Cleaning with a minimum angular anchor profile of 1.5 mils. **Non-Immersion Service:** SSPC-SP6/NACE 3 Commercial Blast Cleaning with a minimum angular anchor profile of 1.5 mils.

**CAST/DUCTILE IRON** Contact your Tnemec representative or Tnemec Technical Services.

**CONCRETE** Allow new concrete to cure 28 days. For optimum results and/or immersion service, abrasive blast referencing SSPC-SP13/NACE 6, ICRI-CSP 2-4 Surface Preparation of Concrete and Tnemec's Surface Preparation and Application Guide. Fill all holes, pits, voids and cracks with 215, 217 or 218.

**ALL SURFACES** Must be clean, dry and free of oil, grease and other contaminants.

## TECHNICAL DATA

**VOLUME SOLIDS** 67.0 ± 2.0% (mixed—A, B & 44-700 Epoxy Accelerator) †

**RECOMMENDED DFT** 2.0 to 10.0 mils (50 to 225 microns) per coat. **Note:** MIL-PRF-4556F applications require two coats at 4.0-6.0 mils (100-150 microns) per coat. Otherwise, the number of coats and thickness requirements will vary with substrate, application method and exposure. Contact your Tnemec representative.

**CURING TIME AT 5 MILS DFT** Without 44-700 Accelerator:

Temperature	To Handle	To Recoat	Immersion
90°F (32°C)	5 hours	7 hours	7 days
80°F (27°C)	7 hours	9 hours	7 days
70°F (21°C)	9 hours	12 hours	7 days
60°F (16°C)	16 hours	22 hours	9 to 12 days
50°F (10°C)	24 hours	32 hours	12 to 14 days

Curing time varies with surface temperature, air movement, humidity and film thickness. **Note:** For valve applications allow 14 days cure at 75°F (24°C) prior to immersion. For pipe applications allow 30 days cure at 75°F (24°C) prior to immersion. **Ventilation:** When used in enclosed areas, provide adequate ventilation during application and cure. **Note:** Refer to product listing on [www.nsf.org](http://www.nsf.org) for specific potable water return to service information. **Note:** For faster curing and low temperature applications, add No. 44-700 Epoxy Accelerator, see separate product data sheet for cure information.

**VOLATILE ORGANIC COMPOUNDS** **Unthinned:** 2.4 lbs/gallon (285 grams/litre)  
**Thinned 5% (#60):** 2.6 lbs/gallon (311 grams/litre)  
**Thinned 10% (#4):** 2.8 lbs/gallon (334 grams/litre) †

**HAPS** **Unthinned:** 2.4 lbs/gal solids **Thinned 5% (#60):** 2.4 lbs/gal solids  
**Thinned 10% (#4):** 3.3 lbs/gal solids

**THEORETICAL COVERAGE** 1,070 mil sq ft/gal (27.2 m<sup>2</sup>/L at 25 microns). See APPLICATION for coverage rates. †

**NUMBER OF COMPONENTS** Two: Part A (amine) and Part B (epoxy) — One (Part A) to one (Part B) by volume.

# POTA-POX® PLUS | SERIES N140

<b>PACKAGING</b>	5 gallon (18.9L) pails and 1 gallon (3.79L) cans - Order in multiples of 2. Reference 44-700 Epoxy Accelerator product data sheet for its packaging information.
<b>NET WEIGHT PER GALLON</b>	12.66 ± 0.25 lbs (5.82 ± .11 kg) (mixed) †
<b>STORAGE TEMPERATURE</b>	Minimum 20°F (-7°C) Maximum 110°F (43°C)
<b>TEMPERATURE RESISTANCE</b>	(Dry) Continuous 250°F (121°C) Intermittent 275°F (135°C)
<b>SHELF LIFE</b>	Part A: 24 months; Part B: 12 months at recommended storage temperature.
<b>FLASH POINT - SETA</b>	Part A: 82°F (28°C) Part B: 80°F (27°C) 44-700: None
<b>HEALTH &amp; SAFETY</b>	Paint products contain chemical ingredients which are considered hazardous. Read container label warning and Material Safety Data Sheet for important health and safety information prior to the use of this product. <b>Keep out of reach of children.</b>

## APPLICATION

### COVERAGE RATES

	Dry MILS (Microns)	Wet MILS (Microns)	Sq Ft/Gal (m²/Gal)
Suggested	6.0 (150)	9.0 (230)	179 (16.6)
Minimum	2.0 (50)	3.0 (75)	537 (49.9)
Maximum	10.0 (225)	15.0 (375)	107 (10.0)

**Note:** Roller or brush application requires two or more coats to obtain recommended film thickness. Allow for overspray and surface irregularities. Wet film thickness is rounded to the nearest 0.5 mil or 5 microns. Application of coating below minimum or above maximum recommended dry film thicknesses may adversely affect coating performance. Reference the "Search Listings" section of the NSF website at [www.nsf.org](http://www.nsf.org) for details on the maximum allowable DFT. †

### MIXING

1. Start with equal amounts of both Parts A & B.
2. Using a power mixer, separately stir Parts A & B.
3. (For accelerated version. If not using 44-700, skip to No. 4.)  
Add four (4) fluid ounces of 44-700 per gallon of Part A while Part A is under agitation.
4. Add Part A to Part B under agitation, stir until thoroughly mixed.
5. Both components must be above 50°F (10°C) prior to mixing. For application of the unaccelerated version to surfaces between 50°F to 60°F (10°C to 16°C) or the accelerated version to surfaces between 35°F to 50°F (2°C to 10°C), allow mixed material to stand 30 minutes and restir before using.
6. For optimum application properties, the material temperature should be above 60°F (16°C).

**Note:** The use of more than the recommended amount of 44-700 will adversely affect performance.

### THINNING

Use No. 4 or No. 60 Thinner. For air spray, thin up to 10% or 3/4 pint (380 mL) per gallon with No. 4 Thinner or thin up to 5% or 1/4 pint (190 mL) per gallon with No. 60 Thinner. For airless spray, roller or brush, thin up to 5% or 1/4 pint (190 mL) per gallon. **Caution: Series N140 NSF certification is based on thinning with No. 4 or No. 60 Thinner for tanks and only No. 60 Thinner for pipe, valves and fittings.** Use of any other thinner voids ANSI/NSF Std. 61 certification.

### POT LIFE

Without 44-700 6 hours at 50°F (10°C) 4 hours at 75°F (24°C) 1 hour at 100°F (38°C)  
With 44-700 2 hours at 50°F (10°C) 1 hour at 75°F (24°C) 30 minutes at 100°F (38°C)

### SPRAY LIFE

Without 44-700: 1 hour at 77°F (25°C) With 44-700: 30 minutes at 75°F (24°C)

**Note:** Spray application after listed times will adversely affect ability to achieve recommended dry film thickness.

### APPLICATION EQUIPMENT

#### Air Spray

Gun	Fluid Tip	Air Cap	Air Hose ID	Mat'l Hose ID	Atomizing Pressure	Pot Pressure
DeVilbiss JGA	E	765 or 704	5/16" or 3/8" (7.9 or 9.5 mm)	3/8" or 1/2" (9.5 or 12.7 mm)	75-100 psi (5.2-6.9 bar)	10-20 psi (0.7-1.4 bar)

#### Airless Spray

Tip Orifice	Atomizing Pressure	Mat'l Hose ID	Manifold Filter
0.015"-0.019" (380-485 microns)	3000-4800 psi (207-330 bar)	1/4" or 3/8" (6.4 or 9.5 mm)	60 mesh (250 microns)

Low temperatures or longer hoses require higher pot pressure. Use appropriate tip/atomizing pressure for equipment, applicator technique and weather conditions.

**Roller:** Use 3/8" or 1/2" (9.5 mm to 12.7 mm) synthetic woven nap roller cover. Use longer nap to obtain penetration on rough or porous surfaces.

**Brush:** Recommended for small areas only. Use high quality natural or synthetic bristle brushes.

### SURFACE TEMPERATURE

Without 44-700: Min. 50°F (10°C), Max. 135°F (57°C) With 44-700: Min. 35°F (2°C), Max. 135°F (57°C)

The surface should be dry and at least 5°F (3°C) above the dew point. Coating will not cure below minimum surface temperature.

### CLEANUP

Flush and clean all equipment immediately after use with the recommended thinner or MEK.  
† Values may vary with color.

WARRANTY & LIMITATION OF SELLER'S LIABILITY: Tnemec Company, Inc. warrants only that its coatings represented herein meet the formulation standards of Tnemec Company, Inc. THE WARRANTY DESCRIBED IN THE ABOVE PARAGRAPH SHALL BE IN LIEU OF ANY OTHER WARRANTY, EXPRESSED OR IMPLIED, INCLUDING BUT NOT LIMITED TO, ANY IMPLIED WARRANTY OF MERCHANTABILITY OR FITNESS FOR A PARTICULAR PURPOSE. THERE ARE NO WARRANTIES THAT EXTEND BEYOND THE DESCRIPTION ON THE FACE HEREOF. The buyer's sole and exclusive remedy against Tnemec Company, Inc. shall be for replacement of the product in the event a defective condition of the product should be found to exist and the exclusive remedy shall not have failed its essential purpose as long as Tnemec is willing to provide comparable replacement product to the buyer. NO OTHER REMEDY (INCLUDING, BUT NOT LIMITED TO, INCIDENTAL OR CONSEQUENTIAL DAMAGES FOR LOST PROFITS, LOST SALES, INJURY TO PERSON OR PROPERTY, ENVIRONMENTAL INJURIES OR ANY OTHER INCIDENTAL OR CONSEQUENTIAL LOSS) SHALL BE AVAILABLE TO THE BUYER. Technical and application information herein is provided for the purpose of establishing a general profile of the coating and proper coating application procedures. Test performance results were obtained in a controlled environment and Tnemec Company makes no claim that these tests or any other tests, accurately represent all environments. As application, environmental and design factors can vary significantly, due care should be exercised in the selection and use of the coating.

Tnemec Company Incorporated 6800 Corporate Drive Kansas City, Missouri 64120-1372 1-800-TNEMEC1 Fax: 1-816-483-3969 [www.tnemec.com](http://www.tnemec.com)





---

## STANDARD CONDITIONS OF SALE

---

### LIMITED WARRANTY:

Seller warrants to the Customer that the goods sold hereunder will be free from defects in material and workmanship for the period of one year from the date of delivery by Seller. Notwithstanding the foregoing, all prototype or beta product is sold and provided "as is" and "with all faults" and without warranty of any kind, express or implied.

Seller may provide information to the Customer relating to the goods, including information regarding performance, quality, physical properties, weights, etc. Such information is intended as providing general guidance only and does not constitute any part of the basis of any contract between the parties. Such information does not constitute a guarantee or warranty.

Seller's sole liability and the Customer's exclusive remedy under this warranty is the repair or replacement, at Seller's option, of goods not conforming to such warranty that are, at the Customer's expense, delivered to Seller or to a person or entity specified by Seller.

Products or parts thereof that are replaced or repaired under warranty during the original warranty period, shall be covered under this warranty until the expiration of the original warranty period or ninety (90) days from the date of such replacement or repair, whichever is later. In any event, such extended warranty period shall not exceed ninety (90) days after the expiration of the original warranty period. Products must be repaired by a Seller authorized repair center for warranty coverage to be considered.

Pump protection features such as moisture sensors and thermal overloads incorporated in the products must be connected and operable for warranty coverage. This warranty is valid only if Seller supplied or authorized alarm monitoring components, cables and control components/panels are used.

Seller shall have no liability under this warranty for defects that are not identified within the warranty period. A defect shall be deemed "identified" within the meaning of this paragraph only if:

- The goods have been delivered to Seller (or a person or entity specified by Seller) for the purpose of remedying such defect, or
- Seller (or a person or entity specified by Seller) has received a written notice from the Customer specifying such defect and stating that the Customer intends to seek warranty coverage promptly.

The consideration of warranty claims shall be contingent upon the full payment for the equipment.

THIS WARRANTY IS IN LIEU OF AND EXCLUDES ALL OTHER WARRANTIES NOT EXPRESSLY SET FORTH HEREIN, WHETHER EXPRESS OR IMPLIED, INCLUDING BUT NOT LIMITED TO ANY WARRANTIES OF MERCHANTABILITY, FITNESS FOR A PURPOSE, AND OR CONFORMANCE TO THE CUSTOMER'S SPECIFICATIONS.

This warranty does not apply to any defect of any kind that is attributable to information or specifications supplied by the Customer or to any products or parts thereof which have been:

- Subjected to misuse, misapplication, accident, alteration, neglect, failure to act in a timely manner to address alarms/warnings, or physical damage;
- Damaged due to a defective power supply, improper electrical protection, faulty repair, ordinary wear and tear, corrosion, erosion or chemical attack, an act of God, an act of war or by an act of terrorism;

This warranty does not cover costs for standard and/or scheduled maintenance that is performed, nor does it cover Seller's parts that, by virtue of their operation, require replacement through normal wear (aka: Wear Parts), unless a defect in material or workmanship is determined by Seller. Wear Parts are defined as cutters, cutting plates, seals, bearings, impellers/propellers, diffusers, wear rings (stationary or rotating), volutes (when used in an abrasive environment), oil, grease, cooling fluids and/or any items deemed necessary to perform and meet the requirements of normal maintenance on all Seller's equipment.

This warranty exclusively pertains to defects arising from manufacturing and assembly, and expressly excludes any responsibility for alterations or modifications that were made after the submittals had been signed and accepted unless specifically stated in wiring by Seller.

For any warranty claims, shipping to and from customer's location or jobsite will be covered 100% by the customer. All loading, unloading, packaging and related freight costs are to be paid by the customer. Customer is responsible to uninstall and remove and re-install and all costs associated with setting the equipment back in operation.



102 NE 2nd Street  
Suite 510  
Boca Raton FL 33432  
(954) 483 9269 Cell  
Arturo Garcia, President  
arturo@wws-llc.com  
meredith@wws-llc.com  
wws-llc.com

RE: BOESCH PUMPS REFERENCES

TO WHOM IT MAY CONCERN,

Please find attached Boesch Pumps list of references, together with Wastewater Solutions, LLC list of references.

Boesch Pumps is a global manufacturer who has expanded nationally across the United States, with pumps most recently being installed for municipal use in the City of Henderson Water and Utility Department in Henderson, Kentucky, The US Army Corp of Engineers Ice Harbor Lock Dam project, The National Fish and Wildlife Commission Coleman National Fish Hatchery in Anderson, California, and the City of Hollywood Department of Public Utilities in Hollywood, Florida.

In addition, many drillers, such as AMPS Aquifer Maintenance, located in West Palm Beach, Florida, are also installing Boesch Pumps in their many projects and are very satisfied with the quality and value that Boesch Pumps provide.

Globally, Boesch Pumps have been used in the oil, gas, agricultural, and mining markets.

Boesch Pumps adhere to all NSF epoxy and coating standards, in addition to being ISO 9001:2015 Certified.

We, as Wastewater Solutions, LLC, are also very experienced in the installation of large vertical turbine projects and have recently installed three (3) 100 HP, 16" column, Vertical Turbine Pumps and Motors at the Hoover Dam with the Bureau of Reclamation. Attached, you will find our CPARS report from the Federal Government, with stellar reviews on our service and dedication.

Thank you for your consideration,

Arturo Garcia



102 NE 2nd Street  
Suite 510  
Boca Raton FL 33432  
(954) 483 9269 Cell  
[arturo@wws-llc.com](mailto:arturo@wws-llc.com)  
[meredith@wws-llc.com](mailto:meredith@wws-llc.com)  
[wws-llc.com](http://wws-llc.com)

### BOESCH PUMPS LIST OF REFERENCES-DOMESTIC

Luis Montoya  
Water Treatment Plant Operations Superintendent  
CITY OF HOLLYWOOD  
DEPARTMENT OF PUBLIC UTILITIES  
3441 Hollywood Blvd.  
Hollywood, Florida 33021  
Phone: 954-967-4230  
Email: [lmontoya@hollywoodfl.org](mailto:lmontoya@hollywoodfl.org)

Meg Ankrom  
Contract Performance Specialist  
US ARMY CORPS OF ENGINEERS  
ICE HARBOR PROJECT  
2763 Monument Drive  
Burbank, WA 99323  
Phone: 509-543-3255  
Email: [Meg.m.ankrom@usace.army.mil](mailto:Meg.m.ankrom@usace.army.mil)

Lonnie Sullivan  
Maintenance Mechanic  
NATIONAL FISH AND WILDLIFE SERVICE  
COLEMAN FISH HATCHERY  
24411 Coleman Fish Hatchery Rd  
Anderson, California 96007  
Phone: 530 365-8622  
Email: [Lonnie\\_Sullivan@fws.gov](mailto:Lonnie_Sullivan@fws.gov)

Derek R. Sanders  
Maintenance Supervisor  
HENDERSON WATER UTILITY  
205 Drury Lane  
Henderson, KY 42420  
Phone: 270-869-6595  
Email: [sandersd@hkywater.org](mailto:sandersd@hkywater.org)

Jeremy Chaja  
Chief Plant Operator  
LAGUNA COUNTY SANITATION DISTRICT  
SANTA BARBARA COUNTY, CALIFORNIA  
3500 BLACK RD  
SANTA MARIA, CA 93455  
Phone: 805-934-6282  
Email: [jchaja@cosbpw.net](mailto:jchaja@cosbpw.net)

Aaron L. Corgard  
Contract Performance Specialist  
U.S. ARMY CORPS OF ENGINEERS  
LOWER GRANITE LOCK AND DAM  
885 Almota Ferry Road  
Pomeroy, WA 99347-9632  
Phone: 509-843-2216  
Email: [Aaron.L.Corgard@usace.army.mil](mailto:Aaron.L.Corgard@usace.army.mil)

Jayne L. Prindible  
Administrative Director  
AMPS, INC.  
AQUIFER MAINTENANCE & PERFORMANCE SYSTEMS, INC.  
7146 Haverhill Road N.  
West Palm Beach, FL 33407  
Phone: 954-967-4230  
Email: [ampsjlp@gmail.com](mailto:ampsjlp@gmail.com)

Kyle Wilson  
Utilities Maintenance Manager  
UTILITIES & ENERGY – CPEM  
UNIVERSITY OF OREGON  
1295 Franklin Avenue  
Eugene, Oregon 97403  
Phone: 541-346-2246  
Email: [rwilson2@uoregon.edu](mailto:rwilson2@uoregon.edu)

#### BOESCH PUMPS LIST OF REFERENCES-INTERNATIONAL

Willy Anderson Salgado (COLOMBIA)  
Phone +57 310 817612  
Email: [wsalgadobomcol@gmail.com](mailto:wsalgadobomcol@gmail.com)

Hernandez Milcar (DRINKING WATER MEXICO)  
Email [amilcar.hernandez@gruporoble.com](mailto:amilcar.hernandez@gruporoble.com)

Eugenio Orellana (ANDA, EL SALVADOR)  
Phone: +503 7871 9062  
Email: [eorellana@sief.com.sv](mailto:eorellana@sief.com.sv)  
Ysrael Urquizo (SEDAPAL, PERU) Phone +51 986 605 700  
Email: [proyectos@qh-ingenieria.com](mailto:proyectos@qh-ingenieria.com)

Franklin Diaz (VENEZUELA)  
Phone +58 414-5269555  
Email [cafetal4@gmail.com](mailto:cafetal4@gmail.com) [www.serplotca.com](http://www.serplotca.com)



Arturo Garcia &lt;arturo@wws-llc.com&gt;

---

**Boesch Pump**3 messages

---

**Sanders, Derek** <derek.sanders@hkywater.org>

Tue, Oct 8, 2019 at 8:32 AM

To: Arturo Garcia &lt;arturo@wws-llc.com&gt;

Cc: Hector Cordova &lt;hector@wws-llc.com&gt;, Meredith Rae &lt;meredith@wws-llc.com&gt;

Arturo,

Just wanted to let you know that the Pump is doing GREAT !!! Since you and Hector left, all we've done is make one minor adjustment of the packing. The operators are very happy with the job the pump is doing and Shane was at the Pump House yesterday and he said that this is one of the cooler running motors he's been around.

I want to thank you for teaching us a few tips while you were here for start-up and I look forward to working with you in the future.

Again, feel free to use my name as a reference and I will be happy to discuss what I really like about the Boesch Pump. (Stainless Steel Hardware, Locking Spider Bearings, Overall Quality, etc.)

What was the material used as the bearing in the Spider Bearings??? I know you told me while you were here, but I was telling our engineer about it and he was possible wanting to spec that material out for our future purchases. If you have any literature on it, I would be very interested in checking it out.

I hope you have a great day (It was 43 degrees here this morning..... lol)

Derek

**Derek R. Sanders****Henderson Water Utility****Maintenance Supervisor**

205 Drury Lane

Henderson, KY 42420

[derek.sanders@hkywater.org](mailto:derek.sanders@hkywater.org)[www.hkywater.org](http://www.hkywater.org)

270.869.6595 – Office

270.823.2730 – Cell

270.826.9343 – Fax



Meredith Rae &lt;meredith@wws-llc.com&gt;

---

## 140D7020PA002-P00001 Fort Apache Dam Water Drawdown Pumps Purchase Order Modification

1 message

**Glenn, Shelly D** <shelly\_glenn@ibc.doi.gov>

Fri, May 1, 2020 at 10:47 AM

To: Meredith Rae &lt;meredith@wws-llc.com&gt;

Cc: Arturo Garcia &lt;arturo@wws-llc.com&gt;, "Shuter, William J" &lt;William.Shuter@bia.gov&gt;, "Chick, Cynthia S" &lt;CYNTHIA\_S\_CHICK@ibc.doi.gov&gt;

Good Morning Ms. Rae,

Thank you so much for working with us on this purchase order. Attached is a copy of the fully-executed modification. You have been a phenomenal contractor to work with! Your continued communications and responsiveness have been very much appreciated!

We hope you and the Wastewater team have continued good health!

-Shelly



---

Shelly D. Glenn

Contract Specialist, Branch III, Div V

Acquisition Services Directorate

Interior Business Center

U.S. Department of the Interior

303-980-3875

[www.doi.gov/IBC](http://www.doi.gov/IBC)

*Your Focus: Your Mission*

*Our Focus: YOU*

---



Meredith Rae &lt;meredith@wws-llc.com&gt;

---

**RE: [Non-DoD Source] Re: FW: HellsGate (UNCLASSIFIED)**

1 message

---

**Corgard, Aaron L CIV USARMY CENWW (USA)** <Aaron.L.Corgard@usace.army.mil>

Tue, May 19, 2020 at 5:42 PM

To: Meredith Rae &lt;meredith@wws-llc.com&gt;, "Powell, William J (Bill) CIV USARMY CENWW (USA)" &lt;William.J.Powell@usace.army.mil&gt;

Cc: "arturo@wws-llc.com" &lt;arturo@wws-llc.com&gt;

CLASSIFICATION: UNCLASSIFIED

Meredith,

Thank you very much for the follow up with this process so far. We are very impressed with your responsiveness and attention to detail. We look forward to receiving your product. This process has been Great so far.

Thanks again,

Aaron L. Corgard  
Contract Performance Specialist  
U.S. Army Corps of Engineers  
Lower Granite Lock and Dam  
885 Almota Ferry Road  
Pomeroy, WA 99347-9632  
(Phone) 509.843.2216  
(Fax) 509.843.3339

-----Original Message-----

From: Meredith Rae [mailto:[meredith@wws-llc.com](mailto:meredith@wws-llc.com)]

Sent: Tuesday, May 19, 2020 12:09 PM

To: Powell, William J (Bill) CIV USARMY CENWW (USA) <[William.J.Powell@usace.army.mil](mailto:William.J.Powell@usace.army.mil)>Cc: [arturo@wws-llc.com](mailto:arturo@wws-llc.com); Corgard, Aaron L CIV USARMY CENWW (USA) <[Aaron.L.Corgard@usace.army.mil](mailto:Aaron.L.Corgard@usace.army.mil)>

Subject: Re: [Non-DoD Source] Re: FW: HellsGate

Good afternoon,

Thank you so much. We are releasing the order to production.

Please let us know if there is anything else you need.

Thank you again for the opportunity!

Meredith Rae

<Blocked<http://www.wws-llc.com/uploads/7/6/3/4/76346731/1468011080.png>>





102 NE 2nd Street  
Suite 510  
Boca Raton FL 33432  
(954) 483 9269 Cell  
arturo@wws-llc.com  
matias@wws-llc.com

## WASTEWATER SOLUTIONS REFERENCES OF PAST PERFORMANCE

Jeff Smutny  
Mechanical Engineer  
U.S. Army Corps of Engineers  
Lower Granite Lock and Dam  
9933 Kinder Road NE  
Moses Lake, WA 98837  
Phone: (509) 843-2260  
Email: Jeffrey.D.Smutny@usace.army.mil

Aaron L. Corgard  
Contract Performance Specialist  
U.S. Army Corps of Engineers  
885 Almotia Ferry Road  
Pomeroy, WA 99347  
Phone: (509) 843-2216  
Email: Aaron.L.Corgard@usace.army.mil

Nick Weaver  
Purchasing Agent  
USACE - Portland District  
333 Sw 1St Ave  
Portland, OR 97204  
Phone: (503) 808-4932  
Email: Nicholas.E.Weaver@usace.army.mil

Ian Jablonski  
Public Works Operations Manager  
City of Port Townsend  
250 Madison St. Suite 2R  
Port Townsend, WA 98368  
Phone: (360) 379-5001  
Email: [ijablonski@cityofpt.us](mailto:ijablonski@cityofpt.us)

Jesse Padfield  
Wastewater Plant Operator Supervisor  
Laguna County Sanitation District  
620 W Foster Rd  
Santa Maria, CA 93455  
Phone: (805) 934-6282  
Email: [jpadfie@countyofsb.org](mailto:jpadfie@countyofsb.org)

Francois A. Domond, P.E.  
Director  
City of Miramar  
Utilities Department  
13900 Pembroke Road  
Miramar, FL 33027  
Phone: (954) 883-6813  
Email: [fdomond@miramarfl.gov](mailto:fdomond@miramarfl.gov)

Jorge Marin  
Operations Superintendent  
City of Hollywood  
Water Treatment Plant  
3441 Hollywood Blvd.  
Hollywood, FL 33021  
Phone: (954) 967-4243  
Cell: (954) 554-4417  
Email: [jomarin@hollywoodfl.org](mailto:jomarin@hollywoodfl.org)

Imogene Johnson  
Administrative Assistant  
Public Works Dept. of the Assumption Parish Police  
Jury 141 Hwy 1008  
Napoleonville, LA 70390  
Phone: (985) 369-7742  
Email: imogenejohnson@assumptionla.com

Connie L. Roberts  
Transportation Supervisor  
Nicholas County Schools  
400 Old Main Drive  
Summersville, WV 26651  
Phone: (304) 872-3611 ext. 234  
Email: clroberts@k12.wv.us

Rob Bittler  
HRSD Procurement Assistant  
Hampton Roads Sanitation Disposal  
1434 Air Rail Avenue  
Virginia Beach, VA 23455  
Phone: (757) 460.7095  
Cell: (757) 274-4614  
Email: rbittler@hrsd.com

Allan R. Remigio  
Procurement and Supply Specialist  
Washington Dept. of Fish and Wildlife  
Financial Services Program  
6420 Carpenter Rd SE  
Lacey, WA 98503  
Contracts & Purchasing  
Phone: (360) 902-2617  
Email: allan.remigio@dfw.wa.gov

Mark D. Roberts  
Plants Mechanic Supervisor  
Utilities Department  
City of Miramar  
13900 Pembroke Rd  
Miramar, FL 33027  
Phone: (954) 883-5053  
Cell: (954) 901-1022  
Email: mdroberts@miramarfl.gov

Amy Coppers Costantino  
Lead Project Engineer  
Wright-Pierce  
600 Federal Street, Suite 2151  
Andover, MA 01810  
Phone: (978) 416-8019  
Cell (617) 750-3052  
Email: amy.coppers@wright-pierce.com

Roy Barnes  
Deputy Director, Wastewater  
Fulton County  
7520 Cochran Road S.W.  
Camp Creek Water Pollution  
College Park, GA 30349  
Phone: (404) 612-6317  
Email: roy.barnes@fultoncountyga.gov

Skender Coma  
Purchasing Coordinator  
City of Boca Raton  
201 West Palmetto Park Road  
Boca Raton, FL 33432  
Phone: (561) 393-7886  
Email: scoma@ci.boca-raton.fl.us

Ramy Maharaj  
Utility Facilities Manager  
City of Boca Raton  
1401 Glades Road  
Boca Raton, FL 33431  
Cell: (561) 239-4369  
Email: RMaharaj@ci.boca-raton.fl.us

Sarah Tiffany  
Project Accounting Specialist  
City of Port Townsend  
250 Madison St. Suite 2R  
Port Townsend, WA 98368  
Phone: (360) 390-4115  
Email: Istiffany@cityofpt.us

Robbie Newland  
Contract Specialist  
U.S. Army Corps of Engineers  
333 Sw 1St Ave  
Portland, OR 97204  
Phone: (503) 808-4634  
Email: robbie.r.newland@usace.army.mil

Tyler Comstock  
Mechanical Engineer  
Bonneville Lock and Dam  
I-84 Exit 40  
Cascade Locks, OR 97014  
Phone: (541) 374-3864  
Email: Tyler.J.Comstock@usace.army.mil

Jeannine Tatum  
Utilities Coordinator  
Desoto County  
Desoto County Utilities  
2170 NE Roan Street  
Arcadia, Fl. 34266  
Phone: (863) 491-7500  
Email: j.tatum@desotobocc.com

Shelly D. Glenn  
Contract Specialist, Branch III, Div V  
U.S. Department of The Interior  
7301 W. Mansfield Ave, MS D2940  
Lakewood, CO 80235  
Phone: (303) 980-3875  
Email: shelly\_glenn@ibc.doi.gov

Jennifer Garcia  
Bureau of Reclamation  
Hoover Dam  
Lower Colorado Region-Yuma Area Office  
7301 Calle Agua Salada  
Yuma, AZ 85634  
Phone: (928) 343-8128  
Email: jgarcia@usbr.gov

Andres Delgado  
Director of Public Works  
City of Hialeah Gardens  
13601 N.W. 107th Avenue  
Hialeah Gardens, FL 33018  
Phone: (305) 877-8273  
Email: adelgado@cityofhialeahgardens.com

Luis Montoya  
Water Treatment Plant Operations Superintendent  
City of Hollywood  
Department of Public Utilities  
3441 Hollywood Blvd.  
Hollywood, FL 33021  
Phone: (954) 967-4230  
Email: lmontoya@hollywoodfl.org

Meg Ankrom  
Contract Performance Specialist  
U.S. Army Corps of Engineers  
Ice Harbor Project  
2763 Monument Drive  
Burbank, WA 99323  
Phone: (509) 543-3255  
Email: Meg.m.ankrom@usace.army.mil

Rick Giangrande  
Fleet Acquisition Specialist  
Pasco County  
7578 State Street  
New Port Richey, FL 34654  
Phone: (727) 834-3739 Ext.7536  
Email: Rgiangrande@pascocountyfl.net

Chelsea Pincay  
U.S. Coast Guard  
USCG Base New Orleans  
1790 Saturn Blvd.  
New Orleans LA 70129  
Phone: (504) 253-4896  
Email: Chelsea.L.Pincay@uscg.mil

Lonnie Sullivan  
Maintenance Mechanic  
National Fish and Wildlife Service Coleman Fish Hatchery  
24411 Coleman Fish Hatchery Rd.  
Anderson, CA 96007  
Phone: (530) 365-8622  
Email: Lonnie\_Sullivan@fws.gov

Derek R. Sanders  
Maintenance supervisor  
Henderson Water Utility  
205 Drury Lane  
Henderson, KY 42420  
Phone: (270) 869-6595  
Email: sandersd@hkywater.org

Jeremy Chaja  
Chief Plant Operator  
Laguna County Sanitation District  
Santa Barbara County, California  
3500 Black Rd  
Santa Maria, CA 93455  
Phone: (805) 934-6282  
Email: jchaja@cosbpw.net

Jayne I. Prindible  
Aquifer Maintenance & Performance Systems, Inc.  
7146 Haverhill Road N.  
West Palm Beach, FL 33407  
Phone: (954) 967-4230  
Email: ampsjlp@gmail.com

Kyle Wilson  
Utilities Maintenance Manager  
Utilities & Energy – CPFM University Of Oregon  
1295 Franklin Avenue  
Eugene, OR 97403  
Phone: (541) 346-2246  
Email: rwilson2@uoregon.edu

Marcus Spiegelberg  
Director of Operations  
Douglas Orr Plumbing Inc.  
301 Flagler Drive  
Miami Springs, FL 33166  
Phone: (305) 887-1687  
Email: marcus@orrplumbing.com



Ronnie S. Navarro  
Pe Deputy Director / City Engineer  
City of Dania Beach  
Public Services Department  
1201 Stirling Road  
Dania Beach, FL 33004  
Phone: (954) 924-6808  
Email: rnavarro@daniabeachfl.gov

Robert Shaw  
Florida Power and Light  
700 Universe Blvd.  
Juno Beach, FL 33408  
Phone: (561) 818-1668  
Email: robert.shaw@fpl.com

David Deka  
The Estate Companies  
6201 SW 70th Street  
South Miami, FL 33143  
Phone: (305) 663-1002  
Email: ddeka@eigfl.com

Elizabeth Sandoval  
San Antonio Water System  
2800 U.S. Hwy. 281  
North San Antonio, TX 78212  
Phone: (210) 233-3408  
Email: Elizabeth.Sandoval@saws.org

Barry Kahl  
Operations & Maintenance Specialist  
Moline Water Department  
30 18th St.  
Moline, IL 61265  
Phone: (309) 524-2316  
Email: bkahl@moline.il.us

Lynn Rix  
Procurement Department  
City of Jacksonville Electric Department  
21 W. Church Street, 1st Floor, Room 002  
Jacksonville, Florida 32202  
Phone: (904) 665-8621  
Email: rixlw@jea.com

Freddy Florial  
City Hall Purchasing Division  
City of Boca Raton  
201 W. Palmetto Park Road, Room 105  
Boca Raton, FL 33432  
Phone: (561) 393-7871  
Email: fflorial@ci.boca-raton.fl.us

FOR OFFICIAL USE ONLY / SOURCE SELECTION INFORMATION - SEE FAR 2.101, 3.104, AND 42.1503

**CONTRACTOR PERFORMANCE ASSESSMENT REPORT (CPAR)****Nonsystems****Name/Address of Contractor:**

Company Name: WASTEWATER SOLUTIONS LLC

Division Name:

Street Address: 14031 SW 143 CT STE 6

City: MIAMI

State/Province: FL Zip Code: 331865745

Country: USA

CAGE Code:

DUNS Number: 079918568

PSC: 4320 NAICS Code: 333996

**Evaluation Type:** Final**Contract Percent Complete:****Period of Performance Being Assessed:** 06/19/2018 - 11/16/2018**Contract Number:** 140R3018P0065 **Business Sector & Sub-Sector:** Nonsystems - Facilities Supplies**Contracting Office:** LOWER COLORADO REGIONAL OFFICE **Contracting Officer:** VIRGINIA TOLEDO **Phone Number:** 928-343-8136**Location of Work:****Award Date:** 06/19/2018 **Effective Date:** 06/19/2018**Completion Date:** 11/09/2018 **Estimated/Actual Completion Date:** 11/16/2018**Total Dollar Value:** **Current Contract Dollar Value:****Complexity:** Low **Termination Type:** None**Competition Type:** Competed under SAP **Contract Type:** Firm Fixed Price**Key Subcontractors and Effort Performed:****DUNS:****Effort:****DUNS:****Effort:****DUNS:****Effort:****Project Number:****Project Title:**

Replacement of Vertical Turbine Pumps

**Contract Effort Description:**

Supply three vertical turbine pumps for the Hoover Dam sump

**Small Business Subcontracting:**

Does this contract include a subcontracting plan? No

Date of last Individual Subcontracting Report (ISR) / Summary Subcontracting Report (SSR): N/A

**Evaluation Areas****Past Rating****Rating**

Quality:	N/A	Satisfactory
Schedule:	N/A	Satisfactory
Cost Control:	N/A	N/A
Management:	N/A	Satisfactory
Small Business Subcontracting:	N/A	N/A
Regulatory Compliance:	N/A	Satisfactory

Other Areas:

(1) : N/A

(2) : N/A

(3) : N/A

FOR OFFICIAL USE ONLY

FOR OFFICIAL USE ONLY / SOURCE SELECTION INFORMATION - SEE FAR 2.101, 3.104, AND 42.1503

**Variance (Contract to Date):**

Current Cost Variance (%): Variance at Completion (%):

Current Schedule Variance (%):

**Assessing Official Comments:**

QUALITY: Contractor furnished equipment that met all salient characteristics

SCHEDULE: Contractor delivered the equipment within a week of the Period of Performance

MANAGEMENT: Contractor communicated in a cordial manner; sought clarifications and Government approval of design as needed; and sent periodic progress updates.

REGULATORY COMPLIANCE: The Contractor complied with all contractual requirements.

**RECOMMENDATION:**

Given what I know today about the contractor's ability to perform in accordance with this contract or order's most significant requirements, I would recommend them for similar requirements in the future.

**Name and Title of Assessing Official:**

Name: VIRGINIA TOLEDO

Title: Contracting Officer

Organization: BOR - Yuma Area Office

Phone Number: (928) 343-8136 Email Address: vtoledo@usbr.gov

Date: 11/28/2018

**Contractor Comments:**

ADDITIONAL/OTHER: Contractor agrees with the ratings assigned.

CONCURRENCE: I concur with this evaluation.

**Name and Title of Contractor Representative:**

Name: MEREDITH RAE

Title: Vice President

Phone Number: 6467653799 Email Address: meredith@wws-llc.com

Date: 11/28/2018

**Review by Reviewing Official:**

Review by Reviewing Official not required.

**Name and Title of Reviewing Official:**

Name:

Title:

Organization:

Phone Number: Email Address:

Date:

FOR OFFICIAL USE ONLY

# State of Florida

## Minority Business Certification

Wastewater Solutions, LLC

Is certified under the provisions of  
287 and 295.187, Florida Statutes, for a period from:

01/09/2023 to 01/09/2025



J. Todd Inman  
Florida Department of Management Services

# *State of Florida*

## *Department of State*

I certify from the records of this office that WASTEWATER SOLUTIONS LLC is a limited liability company organized under the laws of the State of Florida, filed on August 14, 2014.

The document number of this limited liability company is L14000127855.

I further certify that said limited liability company has paid all fees due this office through December 31, 2024, that its most recent annual report was filed on January 3, 2024, and that its status is active.

*Given under my hand and the  
Great Seal of the State of Florida  
at Tallahassee, the Capital, this  
the Third day of January, 2024*



  
Secretary of State

Tracking Number: 0510211273CC

To authenticate this certificate, visit the following site, enter this number, and then follow the instructions displayed.

<https://services.sunbiz.org/Filings/CertificateOfStatus/CertificateAuthentication>



# CERTIFICATE OF LIABILITY INSURANCE

DATE (MM/DD/YYYY)

THIS CERTIFICATE IS ISSUED AS A MATTER OF INFORMATION ONLY AND CONFERS NO RIGHTS UPON THE CERTIFICATE HOLDER. THIS CERTIFICATE DOES NOT AFFIRMATIVELY OR NEGATIVELY AMEND, EXTEND OR ALTER THE COVERAGE AFFORDED BY THE POLICIES BELOW. THIS CERTIFICATE OF INSURANCE DOES NOT CONSTITUTE A CONTRACT BETWEEN THE ISSUING INSURER(S), AUTHORIZED REPRESENTATIVE OR PRODUCER, AND THE CERTIFICATE HOLDER.

**IMPORTANT:** If the certificate holder is an ADDITIONAL INSURED, the policy(ies) must have ADDITIONAL INSURED provisions or be endorsed. If SUBROGATION IS WAIVED, subject to the terms and conditions of the policy, certain policies may require an endorsement. A statement on this certificate does not confer rights to the certificate holder in lieu of such endorsement(s).

PRODUCER	CONTACT NAME:		
	PHONE (A/C, No. Ext):	FAX (A/C, No):	
INSURED	E-MAIL ADDRESS:		
	INSURER(S) AFFORDING COVERAGE		NAIC #
	INSURER A :		
	INSURER B :		
	INSURER C :		
	INSURER D :		
INSURER E :			
INSURER F :			

**COVERAGES****CERTIFICATE NUMBER:****REVISION NUMBER:**

THIS IS TO CERTIFY THAT THE POLICIES OF INSURANCE LISTED BELOW HAVE BEEN ISSUED TO THE INSURED NAMED ABOVE FOR THE POLICY PERIOD INDICATED. NOTWITHSTANDING ANY REQUIREMENT, TERM OR CONDITION OF ANY CONTRACT OR OTHER DOCUMENT WITH RESPECT TO WHICH THIS CERTIFICATE MAY BE ISSUED OR MAY PERTAIN, THE INSURANCE AFFORDED BY THE POLICIES DESCRIBED HEREIN IS SUBJECT TO ALL THE TERMS, EXCLUSIONS AND CONDITIONS OF SUCH POLICIES. LIMITS SHOWN MAY HAVE BEEN REDUCED BY PAID CLAIMS.

INSR LTR	TYPE OF INSURANCE	ADDL INSD	SUBR WVD	POLICY NUMBER	POLICY EFF (MM/DD/YYYY)	POLICY EXP (MM/DD/YYYY)	LIMITS
	<b>COMMERCIAL GENERAL LIABILITY</b>						EACH OCCURRENCE \$
	<input type="checkbox"/> CLAIMS-MADE <input type="checkbox"/> OCCUR						DAMAGE TO RENTED PREMISES (Ea occurrence) \$
							MED EXP (Any one person) \$
							PERSONAL & ADV INJURY \$
	GEN'L AGGREGATE LIMIT APPLIES PER:						GENERAL AGGREGATE \$
	<input type="checkbox"/> POLICY <input type="checkbox"/> PRO-JECT <input type="checkbox"/> LOC						PRODUCTS - COMP/OP AGG \$
	OTHER:						\$
	<b>AUTOMOBILE LIABILITY</b>						COMBINED SINGLE LIMIT (Ea accident) \$
	<input type="checkbox"/> ANY AUTO						BODILY INJURY (Per person) \$
	<input type="checkbox"/> OWNED AUTOS ONLY <input type="checkbox"/> SCHEDULED AUTOS						BODILY INJURY (Per accident) \$
	<input type="checkbox"/> HIRED AUTOS ONLY <input type="checkbox"/> NON-OWNED AUTOS ONLY						PROPERTY DAMAGE (Per accident) \$
							\$
	<b>UMBRELLA LIAB</b>						EACH OCCURRENCE \$
	<input type="checkbox"/> EXCESS LIAB <input type="checkbox"/> CLAIMS-MADE						AGGREGATE \$
	DED <input type="checkbox"/> RETENTION \$						\$
	<b>WORKERS COMPENSATION AND EMPLOYERS' LIABILITY</b>						<input type="checkbox"/> PER STATUTE <input type="checkbox"/> OTH-ER
	ANY PROPRIETOR/PARTNER/EXECUTIVE OFFICER/MEMBER EXCLUDED? (Mandatory in NH)	<input type="checkbox"/> Y <input type="checkbox"/> N	N/A				E.L. EACH ACCIDENT \$
	If yes, describe under DESCRIPTION OF OPERATIONS below						E.L. DISEASE - EA EMPLOYEE \$
							E.L. DISEASE - POLICY LIMIT \$

DESCRIPTION OF OPERATIONS / LOCATIONS / VEHICLES (ACORD 101, Additional Remarks Schedule, may be attached if more space is required)

**CERTIFICATE HOLDER****CANCELLATION**

SHOULD ANY OF THE ABOVE DESCRIBED POLICIES BE CANCELLED BEFORE THE EXPIRATION DATE THEREOF, NOTICE WILL BE DELIVERED IN ACCORDANCE WITH THE POLICY PROVISIONS.

AUTHORIZED REPRESENTATIVE

  
Curtis Luken

© 1988-2015 ACORD CORPORATION. All rights reserved.

**Request for Taxpayer  
Identification Number and Certification**

Go to [www.irs.gov/FormW9](http://www.irs.gov/FormW9) for instructions and the latest information.

**Give form to the  
requester. Do not  
send to the IRS.**

**Before you begin.** For guidance related to the purpose of Form W-9, see *Purpose of Form*, below.

Print or type. See Specific Instructions on page 3.	<b>1</b> Name of entity/individual. An entry is required. (For a sole proprietor or disregarded entity, enter the owner's name on line 1, and enter the business/disregarded entity's name on line 2.)		
	<b>2</b> Business name/disregarded entity name, if different from above.		
	<b>3a</b> Check the appropriate box for federal tax classification of the entity/individual whose name is entered on line 1. Check only <b>one</b> of the following seven boxes.  <input type="checkbox"/> Individual/sole proprietor <input type="checkbox"/> C corporation <input type="checkbox"/> S corporation <input type="checkbox"/> Partnership <input type="checkbox"/> Trust/estate <input type="checkbox"/> LLC. Enter the tax classification (C = C corporation, S = S corporation, P = Partnership) . . . . . <b>S</b> <b>Note:</b> Check the "LLC" box above and, in the entry space, enter the appropriate code (C, S, or P) for the tax classification of the LLC, unless it is a disregarded entity. A disregarded entity should instead check the appropriate box for the tax classification of its owner. <input type="checkbox"/> Other (see instructions) _____	<b>4</b> Exemptions (codes apply only to certain entities, not individuals; see instructions on page 3):  Exempt payee code (if any) _____  Exemption from Foreign Account Tax Compliance Act (FATCA) reporting code (if any) _____  (Applies to accounts maintained outside the United States.)	
	<b>3b</b> If on line 3a you checked "Partnership" or "Trust/estate," or checked "LLC" and entered "P" as its tax classification, and you are providing this form to a partnership, trust, or estate in which you have an ownership interest, check this box if you have any foreign partners, owners, or beneficiaries. See instructions . . . . . <input type="checkbox"/>		
	<b>5</b> Address (number, street, and apt. or suite no.). See instructions.	Requester's name and address (optional)	
	<b>6</b> City, state, and ZIP code		
	<b>7</b> List account number(s) here (optional)		

**Part I Taxpayer Identification Number (TIN)**

Enter your TIN in the appropriate box. The TIN provided must match the name given on line 1 to avoid backup withholding. For individuals, this is generally your social security number (SSN). However, for a resident alien, sole proprietor, or disregarded entity, see the instructions for Part I, later. For other entities, it is your employer identification number (EIN). If you do not have a number, see *How to get a TIN*, later.

**Note:** If the account is in more than one name, see the instructions for line 1. See also *What Name and Number To Give the Requester* for guidelines on whose number to enter.

<b>Social security number</b>											
				-				-			
<b>or</b>											
<b>Employer identification number</b>											
					-						

**Part II Certification**

Under penalties of perjury, I certify that:

1. The number shown on this form is my correct taxpayer identification number (or I am waiting for a number to be issued to me); and
2. I am not subject to backup withholding because (a) I am exempt from backup withholding, or (b) I have not been notified by the Internal Revenue Service (IRS) that I am subject to backup withholding as a result of a failure to report all interest or dividends, or (c) the IRS has notified me that I am no longer subject to backup withholding; and
3. I am a U.S. citizen or other U.S. person (defined below); and
4. The FATCA code(s) entered on this form (if any) indicating that I am exempt from FATCA reporting is correct.

**Certification instructions.** You must cross out item 2 above if you have been notified by the IRS that you are currently subject to backup withholding because you have failed to report all interest and dividends on your tax return. For real estate transactions, item 2 does not apply. For mortgage interest paid, acquisition or abandonment of secured property, cancellation of debt, contributions to an individual retirement arrangement (IRA), and, generally, payments other than interest and dividends, you are not required to sign the certification, but you must provide your correct TIN. See the instructions for Part II, later.

<b>Sign Here</b>	Signature of U.S. person 	Date <b>05/07/2024</b>
------------------	--	------------------------

**General Instructions**

Section references are to the Internal Revenue Code unless otherwise noted.

**Future developments.** For the latest information about developments related to Form W-9 and its instructions, such as legislation enacted after they were published, go to [www.irs.gov/FormW9](http://www.irs.gov/FormW9).

**What's New**

Line 3a has been modified to clarify how a disregarded entity completes this line. An LLC that is a disregarded entity should check the appropriate box for the tax classification of its owner. Otherwise, it should check the "LLC" box and enter its appropriate tax classification.

New line 3b has been added to this form. A flow-through entity is required to complete this line to indicate that it has direct or indirect foreign partners, owners, or beneficiaries when it provides the Form W-9 to another flow-through entity in which it has an ownership interest. This change is intended to provide a flow-through entity with information regarding the status of its indirect foreign partners, owners, or beneficiaries, so that it can satisfy any applicable reporting requirements. For example, a partnership that has any indirect foreign partners may be required to complete Schedules K-2 and K-3. See the Partnership Instructions for Schedules K-2 and K-3 (Form 1065).

**Purpose of Form**

An individual or entity (Form W-9 requester) who is required to file an information return with the IRS is giving you this form because they