

# DATA SHEET

Premium Efficiency Motor: **PEWWE1-18-143T**

**60 Hz**

WorldWide Electric Corporation

1 (800) 808-2131

Worldwideelectric.net



Document Generated: 31-Jul-2023

Document ID:

Customer:

## MOTOR INFORMATION

|                         |  |
|-------------------------|--|
| HP                      | 1  |
| RPM                     | 1800   |
| Phase                   | 3  |
| Frequency               | 60 Hz  |
| Voltage                 | 230/460 V                                    |
| Frame Size              | 143T   |
| Enclosure               | TEFC   |
| Degree of Protection    | IP55   |
| Service Factor          | 1.25   |
| Poles                   | 4  |
| Full Load Speed         | 1755   |
| Insulation Class        | F  |
| Temp Rise               | 80°C   |
| NEMA Code Letter        | N  |
| Duty Cycle              | S1 / Continuous                              |
| Slip                    | 2.50%  |
| NEMA Design             | B  |
| Moment of Inertia       | 0.0809 lb.ft.^2                              |
| Locked Rotor Time (Hot) | 12 seconds                                   |
| Sound Pressure Level    | 60 dB(A)                                     |
| Number of Starts        | 2 Cold/ 1 Hot                                |
| Max Ambient Temperature | 40°C   |
| Max Elevation           | 1000 m.a.s.l (3300 f.a.s.l)                  |
| Mounting                | F1   |
| Rotation                | Bi-Directional                               |
| Area of Classification  | Class 1 Division 2 Groups A,B,C,D T3C(160°C) |
| Inverter Rating         | 10:1 CT / 20:1 VT PWM Type                   |
| Standard                | NEMA MG-1                                    |
| Approvals               | CSA-US, CE                                   |

## EFFICIENCY/POWER FACTOR

| LOAD | EFF    | P. F. |
|------|--------|-------|
| 100% | 85.5 % | 0.67  |
| 75%  | 84.5 % | 0.60  |
| 50%  | 81.0 % | 0.47  |

## TORQUE

| FULL LOAD   | LRT   | BDT   |
|-------------|-------|-------|
| 2.99 lb.ft. | 300 % | 420 % |

## AMPERAGE INFORMATION

|                   | 230V  | 460V  |
|-------------------|-------|-------|
| Full Load Amps    | 3.27A | 1.63A |
| Locked Rotor Amps | 30A   | 15A   |
| No Load Current   | 2.2A  | 1.1A  |
| Usable at 208V    | 3.61A |       |

## BEARING INFORMATION

|                         |           |
|-------------------------|-----------|
| DE Bearing              | 6205ZZ C3 |
| ODE Bearing             | 6205ZZ C3 |
| Grease Type             | -         |
| DE Regreasing Interval  | - Hours   |
| ODE Regreasing Interval | - Hours   |

## ADDITIONAL DATA

|                    |                        |
|--------------------|------------------------|
| F2 Suitable        | Yes                    |
| Shaft Material     | 1045 Carbon Steel      |
| Connection Diagram | 230 / 460 V - 9 Lead Y |
| Approximate Weight | 39.2 lbs.              |

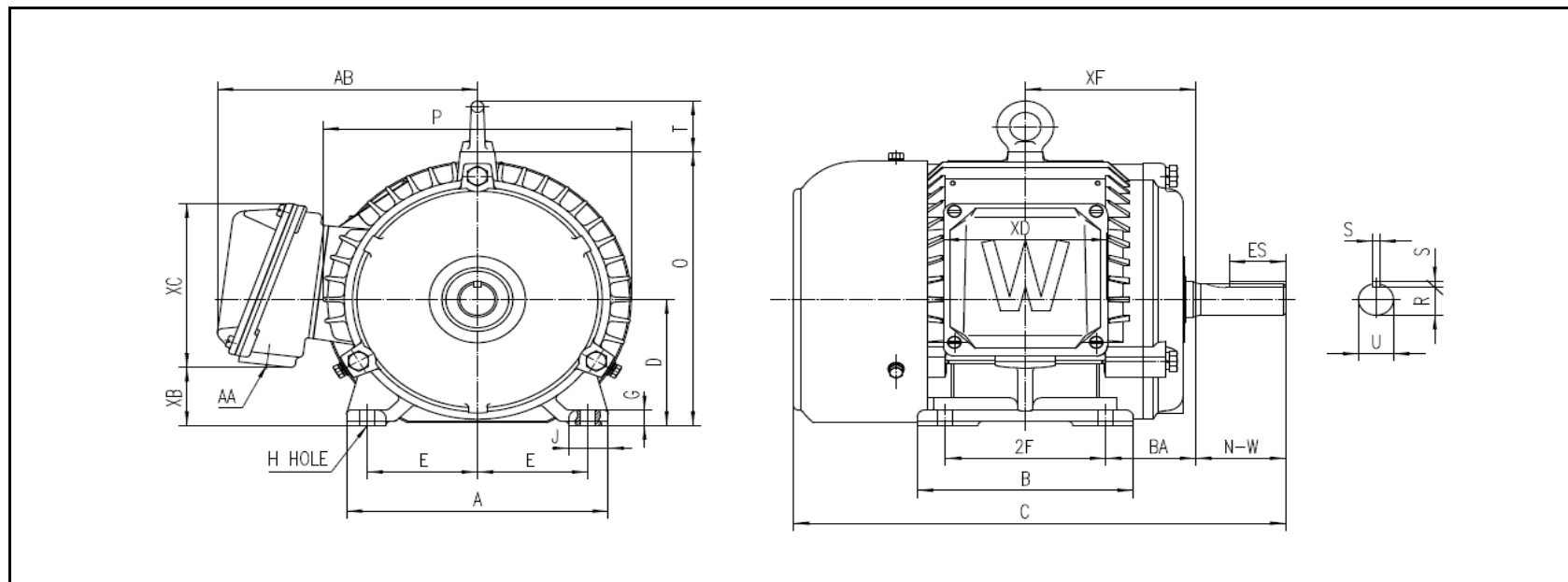
# MOTOR DRAWING

Premium Efficiency Motor: **PEWWE1-18-143T**

WorldWide Electric Corporation

1 (800) 808-2131

Worldwideelectric.net



## DIMENSION - INCHES

| MOUNTING |     |    |      |      | A     | B     | C      | D   | G     | J     | P     | O   | T     | AB    |
|----------|-----|----|------|------|-------|-------|--------|-----|-------|-------|-------|-----|-------|-------|
| E        | 2F1 | 2F | H    | BA   |       |       |        |     |       |       |       |     |       |       |
| 2.75     | --  | 4  | 0.34 | 2.25 | 6.535 | 5.394 | 12.291 | 3.5 | 0.433 | 0.984 | 7.717 | 7.6 | 1.417 | 6.491 |

| SHAFT & KEY |      |       |      |       |
|-------------|------|-------|------|-------|
| S           | ES   | R     | N-W  | U     |
| 0.188       | 1.41 | 0.771 | 2.25 | 0.875 |

| TERMINAL BOX |      |      |       |       |
|--------------|------|------|-------|-------|
| AA           | XB   | XC   | XD    | XF    |
| 3/4          | 1.61 | 4.55 | 4.094 | 4.256 |

# PERFORMANCE CURVES

WorldWide Electric Corporation

1 (800) 808-2131

Worldwideelectric.net



Premium Efficiency Motor:

**PEWWE1-18-143T**

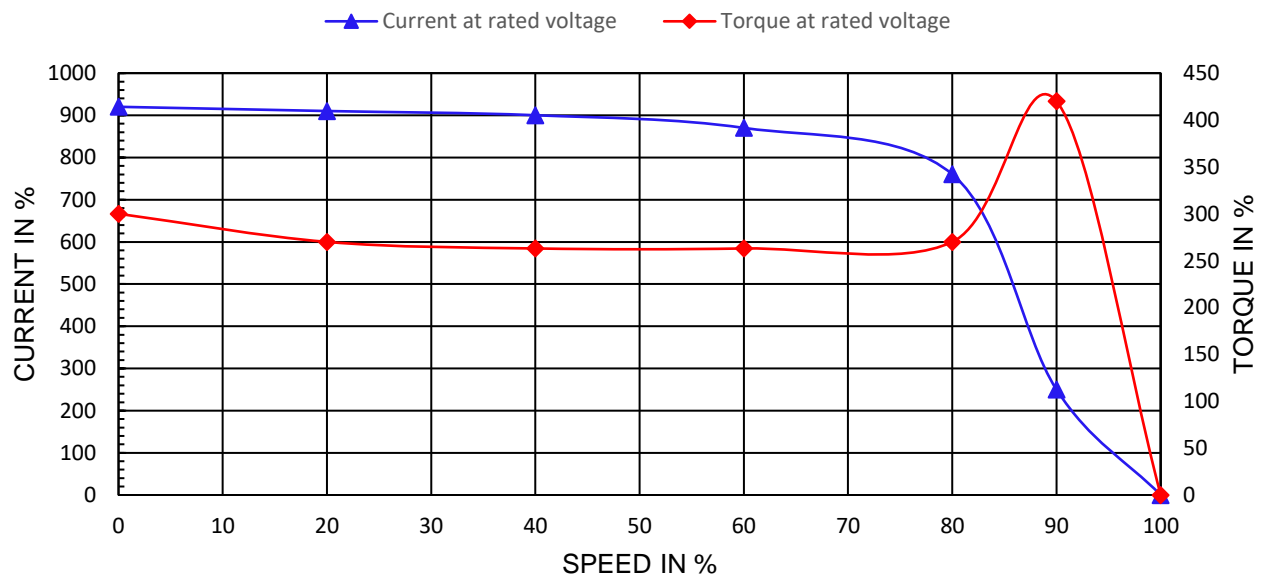
Document Generated: 31-Jul-2023

Document ID:

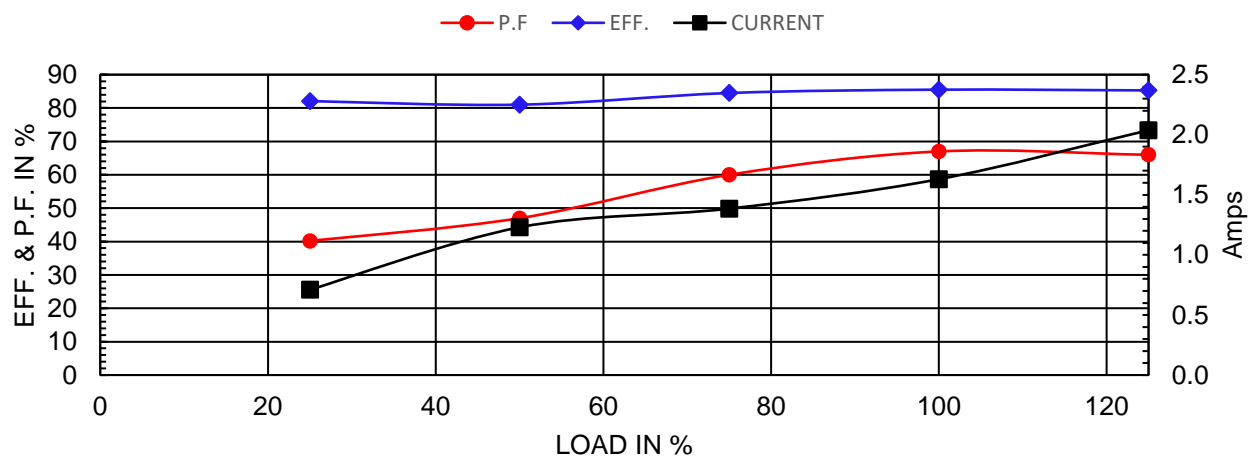
Customer:

|                    |                |  |            |      |              |        |
|--------------------|----------------|--|------------|------|--------------|--------|
| Motor Type         | PEWWE          |  | FL Speed   | 1755 |              |        |
| Output Rating (HP) | 1              |  | LRT (%FLT) | 300  | 460 volt FLA | 1.63 A |
| Full Load Torque   | 2.99 lb.ft     |  | BDT (%FLT) | 420  | 230 volt FLA | 3.27 A |
| Rotor Wk^2         | 0.0809 lb-ft^2 |  |            |      |              |        |

SPEED VS TORQUE & CURRENT CURVE



OUTPUT VS EFF., P.F. & CURRENT CURVE



# NAMEPLATE / WIRING

Premium Efficiency Motor:

PEWWE1-18-143T

WorldWide Electric Corporation

1 (800) 808-2131

Worldwideelectric.net



Document Generated: 31-Jul-2023  
Document ID:

Customer:

## SAMPLE NAMEPLATE DATA

|  |         |                     |  |                                |                         |            |             |              |  |
|--|---------|---------------------|--|--------------------------------|-------------------------|------------|-------------|--------------|--|
|  |         | <b>NEMA Premium</b> |  | <b>3-PHASE INDUCTION MOTOR</b> |                         | 259277<br> |             | CE<br>CC006A |  |
| Model  |         |                     |  |                                | Ser No.                 |            |             |              |  |
| HP   |         | S.F.                |  | IP                             |                         | Encl       |             |              |  |
| Frame  |         | P.F.                |  | Code                           |                         | Type       |             |              |  |
| Voltage  | 230/460 | Hz                  |  | Ins Cl                         |                         | Rating     | °C Amb Cont |              |  |
| Amps   |         | RPM                 |  | Design                         |                         | Date       |             |              |  |
| Nom. Eff.  | FL      | % 3/4               |  | % 230/460V                     | 10:1 CT 20:1 VT PWM VFD | 1.0SF      |             |              |  |
|  |         |                     |  | DE Brng                        |                         |            |             |              |  |
| Class I DIV. 2 Groups A B C D  |         |                     |  | Amb. 40°C                      |                         | T3C(160°C) |             | ODE Brng     |  |
| Class I Zone 2 IIC   |         |                     |  | Amb. 55°C                      |                         | T3A(180°C) |             | Grease type: |  |
| <div> <div>50Hz</div> <div>HP</div> <div>V</div> <div>A</div> <div>rpm</div> <div>S.F.1.0</div> </div> |         |                     |  |                                |                         |            |             |              |  |
| WorldWide Electric Corporation   |         |                     |  |                                |                         |            |             |              |  |

Model PEWWE1-18-143T

HP 1 S.F. 1.25 IP IP55 Encl TEFC

Frame 143T P.F. 0.67 Code N Type

Voltage 230/460 V Hz 60 Hz Ins Cl F Ambient 40°C

Amps 3.27/1.63 RPM 1755 Design B DE Brng 6205ZZ C3

Nom. Eff. FL 85.5% 3/4 84.5% ODE Brng 6205ZZ C3

Class 1 Division 2 Groups A,B,C,D T3C(160°C) Grease type: -

50Hz 1 HP 200/400 V 4.04/2.02 A 1450 rpm