



LINEV SYSTEMS US, INC.
13631 Poplar Circle, Conroe, TX 77304, USA
☎ 936-588-2064



X-RAY INSPECTION SYSTEM
Bid # 50-00147209
Jefferson Parish
Wednesday, February 19, 2025 at 11:00 AM

Jefferson Parish Purchasing Department
Stacey Champagne
200 Derbigny Street
General Government Building, Suite 4400
Gretna, LA 70053
stacey.champagne@jeffparish.net
504.364.2688

www.linevsystems.com

COVER LETTER

February 18, 2025

Stacey Champagne
Jefferson Parish Purchasing Department
stacey.champagne@jeffparish.net

RE: X-ray Inspection System at Jefferson Parish General Government Building

Ms. Champagne,

LINEV Systems US, Inc. understands the need Jefferson Parish Department of General Services has for securing X-Ray Baggage Scanners. As a longtime partner of County and State Agencies all over the Country, we recognize your facilities needs and are eager to offer our best-in-industry BV6045 x-ray baggage scanner solution that your agency has come to know and trust.

By partnering with LINEV Systems, Jefferson Parish Department of General Services will be getting the benchmark technology for X-Ray Baggage Scanners on the market. X-Ray Scanners are a crucial piece in agencies' ability to limit the amount of contraband being brought into or moved around facilities. LINEV Systems strives to innovate a product that is true to the industry's needs by offering the BV6045 X-Ray Baggage Scanner.

Our Response reflects how LINEV Systems US, Inc.'s compelling qualities uniquely positions us to ensure that Agencies receive a technology that they know and can trust. We are equipped with the technology needed to make sure contraband is going to be detected. By selecting LINEV Systems you are gaining access to proven capabilities, such as:

- **A-Eye Threat Detection Software®** - LINEV's proprietary software A-EYE is an Artificial Intelligence system intended for the automated identification of firearms, firearm components, ammunition, grenades, knives, and brass knuckles. The detection algorithm is an embedded part of our baggage inspection systems.
- **Longevity**- LINEV Systems knows and understands the challenges a correctional market has. We pride ourselves on building a system that can withstand the potential abuse it can take over time. Our system is built with a rugged steel design that limits the ability of anyone to tamper with or cause a malfunction of the system which results in an industry leading uptime.

Thank you for your time and consideration. We look forward to further discussing our proposal with the Jefferson Parish Department of General Services. If you require any further information or clarification of any elements of our proposal, please contact me via email or telephone.

Best regards,



Regional Sales Manager
btrumbo@linevsystems.com
936.588.2064

COMPANY PROFILE

Offeror's Legal Name: LINEV Systems US, Inc.		Address: 13631 Poplar Circle Conroe, TX 77304	
Phone Number: 936-588-2064		Fax Number: 936-249-0318	E-mail Address: sales@linevsystems.com
Home Office Location: 13631 Poplar Circle Conroe, TX 77304		Date Established: 2006	Ownership: Texas Corporation
Firm Leadership: Paul Rivello, V.P.S Scott Ortolani, COO		Number of Employees: 51	Number of Employees Involved in Tasks Directly Related to the Work: 15



Additional Background Information:

LINEV Systems US, Inc. is a world leader in the design and manufacture of X-Ray Security Screening Systems to prevent the introduction of weapons, drugs, and other threat items into your facilities. Combining innovative threat detection technologies with intelligent and flexible system designs, LINEV's screening and inspection systems provide exceptional automated processing, threat recognition and throughput rates. LINEV's technologies safeguard people, airports and aircraft, ships and the flow of goods, state boundaries, critical infrastructure, and public events all over the world against current and emerging threats such as terrorism and illegal trafficking.

LINEV Systems is a certified U.S. small business and the exclusive source for LINEV products in the United States of America. Our 27,000 square foot headquarters, located in Conroe, Texas, will be the basis for production, service, and support.

LINEV Systems US, Inc. possesses the requisite Capability and Capacity to support Dixon Correctional Institute. We offer the following in support of this statement:

- US production and service based in Conroe, Texas
- Toll Free Service Line – 24/7/365 (844-989-6789)
- Field Service Engineers employed throughout the country provide unparalleled response times and support
- Our Solutions are Patent Protected
 - **COMPASS (US Patent # 7,016,473 B1)**
 - **COMPASS DV (US Patent # 9,392,983 B2)**
 - **DruGuard® (US Patent # 9,576,219 B2)**
- Our solutions are CE stamped and UL approved
- Our Full Body Scanners are CJIS (Criminal Justice Information Security) approved
- Our Imaging Performance is industry leading (42AWG, 5K resolution)
- The production facility is state-of-the-art and ISO Certified
- We support approximately 2,000 security screening systems throughout the United States
- Our systems are exclusively deployed in over a dozen (29) State DOC's

LINEV Systems Corporate Office and Warehouse in Conroe, Texas

EXECUTIVE SUMMARY

LINEV Systems US, Inc., the premier supplier and inventor of through-the-body security X-ray technology, is pleased to respond to the Request for Proposal with our **BV6045** X-ray scanner. This system meets, and in many cases exceeds, the specifications outlined in your Scope of Work.

When considering any x-ray scanner technology for your facility, it is critical to understand your exact needs. LINEV Systems understands the safety and security of staff and visitors is a top priority for the Jefferson Parish General Government Building. The BV6045 can scan bags, briefcases, packages, and mail. The image is displayed on the monitor immediately assisting in traffic flow. Our scanners highlight suspected contraband and color code them based on the material to assist the operator.

LINEV Systems US, Inc. is committed to partnering with BV6045 and helping the Jefferson Parish General Government Building meet its objectives. Our BV6045 baggage x-ray scanning system with optional A-EYE Automatic Threat Detection Software is the most advanced, best performing system in its class. Along these lines, we are confident that it is the best tool to support the Parish's interdiction and detection efforts. LINEV Systems US, Inc. recommends the **BV6045** Baggage Scanning System.



Section 3.0 – Bid Specifications:

The successful bidder shall supply and install the following:

All items will be bidder-supplied new	
One (1) LINEV BV6045 – Package X-Ray Inspection System	Comply
One (1) 24" LCD monitor compatible with this unit	Comply
One (1) Manufacturer-approved operator keyboard.	Comply
Four (4) new bidder-supplied .5-meter roller tables inlet and outlet side of the machine.	Comply
Properly level machine.	Comply
Commissioning the new X-ray system shall be performed with an owner's representative present.	Comply-all commissioning will take place and report will be given to representative.
No loading dock at this site.	Comply-a delivery truck with a lift gate will be used.

Section 4.0 Unit Description:

LINEV BV6045 - Package X-Ray Inspection System:

Tunnel dimensions (W-620MM) --24.4 INCHES, (H 420 MM)—16.5 INCHES	Comply-24"x17.7"
Max. object size 1000 (W) x 1000 (H) [mm] • 39.4" (W) x 39.4" (H)	Comply
Conveyor height approx. 797 mm (31.4")	Approx. 28"
Conveyor speed at mains frequency approx. 0.20 (m/sec) -(39.4 ft/min.)	0.22±0.03 m/sec {43.3ft/min}
Max. conveyor load (evenly distributed) 165kg (364lb)	Comply
Resolution (wire recognition) Standard: 42AWG ▪ Typical 2: 44 AWG (0.1 mm Cu)	0.08 mm (40 AWG)
Penetration (steel) Standard: 42 mm • Typical: 44 mm	36 mm guaranteed 37 mm typical
Film safety Guaranteed even for high-speed films up to ISO 1600 (33 DIN)	Comply
Duty cycle 100 %, no warm-up procedure required	Comply
X-ray Generator	
Anode voltage • cooling 160 kV cp •hermetically sealed oil bath	Comply

Beam direction diagonal (from bottom to top)	Comply
Image Generating System	
X-ray converter L-shaped detector line	Comply
Grey levels stored 4096	Exceed-65 536
Image presentation B/W, color	Comply
Digital video memory 1280 x 1024 / 24 bit	1920 x 1080
Image evaluation functions VARI-MAT, O2, OS high electronic zoom: step-less enlargement up to 64-times	
Monitor Flat Panel, LCD Monitor	Comply
Additional Key Features and Options	
Explosive threats, narcotics & density alerts	Comply
Spectrum 4	Comply
17 image processing functions	Compy
SINERGY low-density enhancement	Comply
Dual Mode Z-effective	Comply
Automatic, Enhanced Image Archiving	Comply
E. U. Approved Threat Image Protection	Comply
Remote Status Monitoring	Comply
Remote Archive Review	Comply
Multi-System Alarm Resolution Network	Comply
Multiplexing and Matrixing	Comply
Tray Return System Compatible	Comply
13 Languages	Comply
64-bit Operating System	Comply
Programmed advanced software	
HI-spot: Local Area Image Enhancement of Dense Objects	Comply
SEN: Super-Enhancement of Images with Optimum Contrast	Comply
HI-MAT: Distinguishing Organic and Inorganic Materials by Color (Orange, Green, and Blue)	Comply
HI-CAT: 256 Color Variances Black/White Image - 4096 Grey Levels	Exceed-infinite color variances
X-ACT: Advanced Contents Tracking Image Store System - Digital Image Management	Comply

Hi-TIP Plus: Threat Image Projection High-Density Alert - Automatic Marking of Suspicious Objects	Comply
XPLORE: Determination of Organic Materials	Comply
Xport: Automatic Image Transmission	Comply
OTS Xtrain: Offline Operator Practice	Comply
Installation Data	
X-ray leakage meets all applicable laws and regulations concerning X-ray emitting devices	Comply
CE-labelling in compliance with directives 2006/42/EC, 2014/35/EU, 2014/30/EU	Comply
Sound pressure level < 70 dB(A)	<65 dB(A)
Operating- / storage temperature 0° - 40°C / - 20°C - +60°C	Comply
Humidity 5% - 95% (non-condensing)	Comply
Power supply standard: 230 VAC or 120 VAC +10% / -15% • 50 Hz / 60 Hz ± 3 Hz	Comply
Power consumption approx. 1.0 kVA	Max 0.9 kVA
Protection class system/keyboard IP 20/IP 43	Comply
Dimensions (L) x 50.9" inner cabinet, (L) 82" edge of the conveyor to edge of the conveyor (W) x 34.2" (H) 54.2 "approx. Weight 1184 lbs.	Comply
Mechanical construction steel construction with steel panels, mounted on roller castors standard color: RAL 7016 (dark gray)	Comply
Section 5.0 – Warranty:	
Four (4) Year Parts and Labor Warranty with Preventative Maintenance and Radiation Leak Survey:	
Provide a four (4) year extended warranty and preventative maintenance contract from the manufacturer.	Comply
The preventative maintenance inspection and radiation leak survey shall include but is not limited to the following:	
Travel time	Comply
Travel expenses	Comply
Freight	Comply

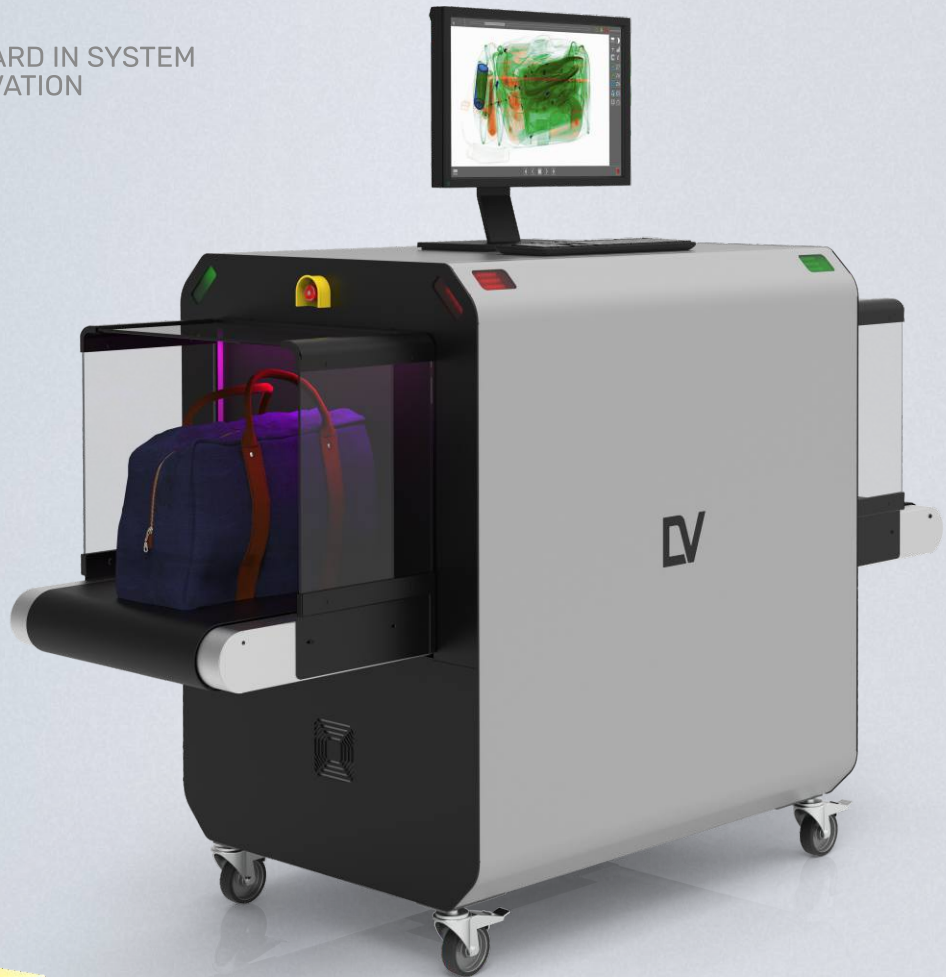
Replacement parts	Comply
Labor	Comply
Shipping	Comply
Inspect the condition of all doors, panels, fenders, safety/jump rollers, and lens covers.	Comply
Inspect the condition of all conveyor belts for damage, proper tracking/tension, and alignment/leveling.	Comply
Check for oil leaking from motors or excessive noise from the belt. Recommend replacement, if needed.	Comply
Check and replace defective X-rays on indicators.	Comply
Open the system and check the internal condition.	Comply
Clean dust and dirt from the PI Board, Power Supply fans, XRC, LIF, and Light barriers.	Comply
Gently clean the light barrier transmitter and receiver Diodes from the inside of the tunnel.	Comply
Check the inside of the tunnel and remove any foreign material stuck to the inside walls, plastic collimator cover, and under the conveyor belt.	Comply
Perform a complete alignment of the X-Ray generator. Adjust the offset and gain of the LIF board either mechanically (LIF 1 units) or via the software (LIF 3 units).	Comply
Check the high voltage, anode current, and heater current values and make	Comply
Adjustments if necessary.	Comply
Section 6.0 – Hours of Work:	
The work to be performed shall be scheduled during normal working hours, Monday through Friday, 7:00 a.m. to 3:00 p.m.	Comply
Section 7.0 – Start of Work Conference and Notice to Proceed:	

A "Start of Work Conference" shall be held between the successful bidder and the owner before any work commences.	Comply
No Materials shall be ordered until the successful bidder receives a written "Notice to Order Materials" from the Department of General Services.	Comply
No work shall be performed until the successful bidder receives a written "Notice to Proceed" to begin work from the Department of General Services.	Comply



BV 6045

A QUANTUM STEP FORWARD IN SYSTEM
AVAILABILITY AND INNOVATION



KEY FEATURES

Modular Architecture

Colour Solutions

Telemetry (predictive analytics)

Artificial Intelligence software system
for automated detection of firearms,
knives and ammunition

Automatic identification of suspicious
objects (drugs, explosives)

Availability of 7, 3 colour and infinite
colour palettes of images

BV 6045 is a high-resolution, single view X-ray baggage inspection system with the ability to automatically detect prohibited objects and threats.

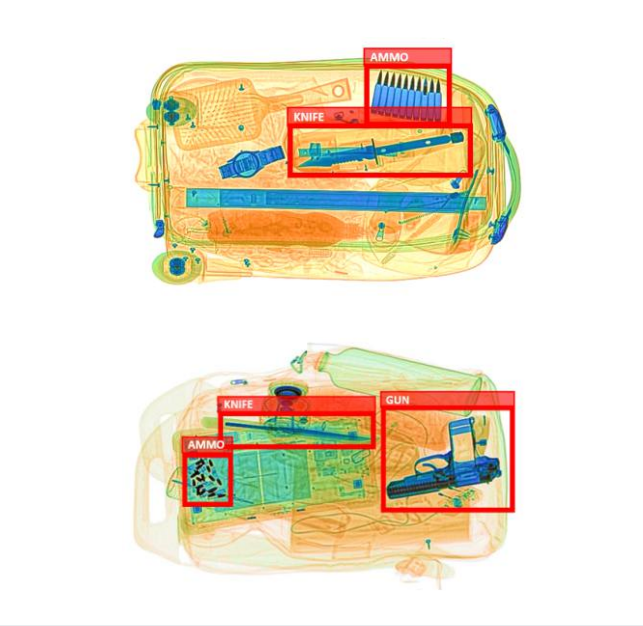
The tunnel with a width of 610 mm and a height of 450 mm is optimal for inspection of baggage, bags, hand luggage and parcels. The System may be used at inspection points of critical infrastructure facilities, law enforcement and security agencies, customs, border guards, hotels, event centers, educational institutions, sports arenas, and other places where reliable and uninterrupted operation of inspection systems is required.

BV 6045 enables the identification of weapons, explosives, drugs and any other dangerous or prohibited items. Unique colour palettes and touch control provide an exceptional level of operator efficiency.

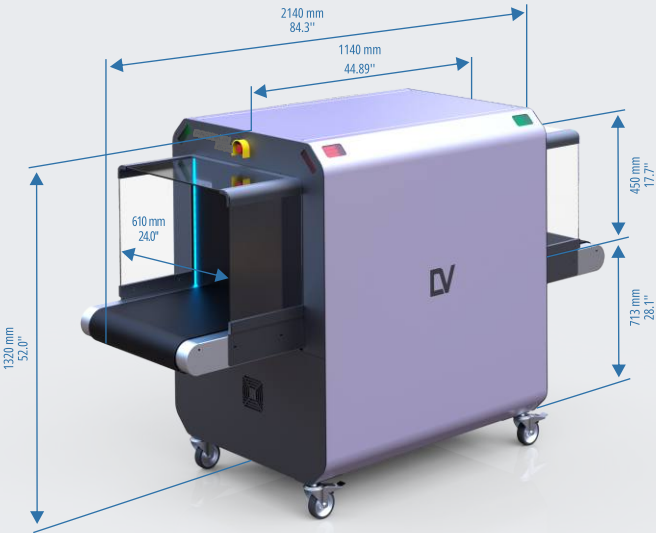
BV 6045

OPTIONS

- Automatic selection of suspicious objects (such as explosives, drugs, Impenetrable areas) using Zeff and optical density
- TIP software for monitoring operator vigilance
- Secure login
- Multi-level user access with the ability to administer users, roles and access level
- Viewing X-ray images from a previous session
- Quick view of the last 10 images (configurable parameter)
- Bi-directional scanning
- Modes of operation: scanning with a stop of the conveyor after each object or without stopping, with the possibility of returning the object after scanning
- Automatic diagnostics of the System and individual units performance
- Automatic warming up of the X-ray generator during prolonged idle time (no warming up is required during daily operation of the System)
- Automatic storage of X-ray images in the archive
- Baggage counter
- Display of date and time, unit serial number and operator IDMultilingual interface
- Possibility of choice by the operator of 3, 7-colour or infinite colour palette
- Display of software version and serial number of the System
- Display of user login time and duration of the current session



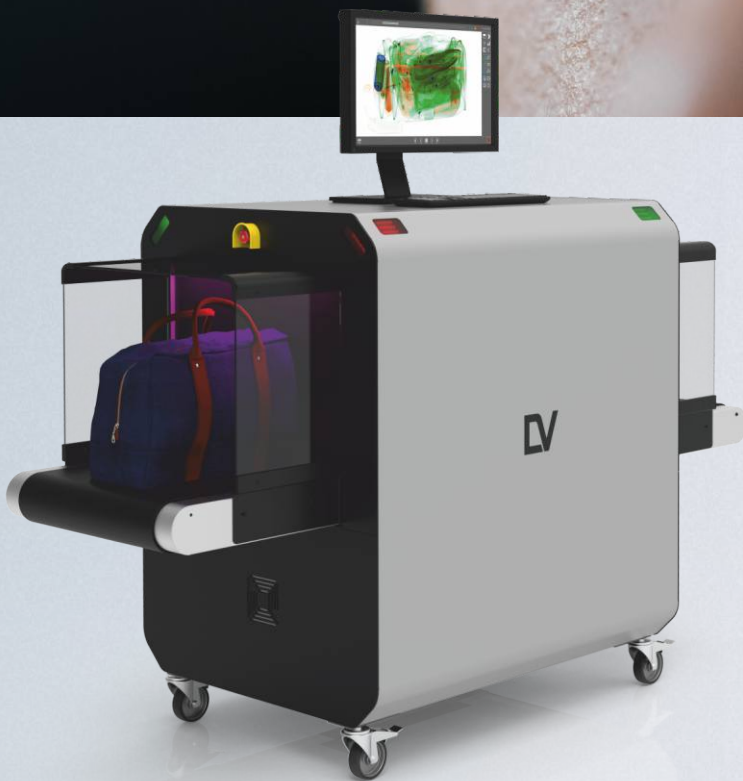
Examples of Images with Automatic Threat Detection by the AI Software System



GENERAL SPECIFICATIONS

DIMENSIONS	
TUNNEL DIMENSIONS	
width	610 mm [24.0 in]
height	450 mm [17.7 in]
OVERALL DIMENSIONS (MAX)	
width	845 mm [33.3 in]
height	1325 mm [52.2 in]
length	2140 mm [84.3 in]
WEIGHT (MAXIMUM)	480 kg [1058 lbs]
CONVEYOR BELT	
Maximum distributed load on the conveyor belt	180 kg [397 lbs]
Conveyor height	713 mm [28 in]
Conveyor speed	0.22±0.03 m/s [43.3 ft/min]
X-RAY SOURCE	
Anode voltage	160 kV
Beam direction	Diagonally upward
X-RAY DETECTOR	
Detective ability for copper wire	0.08 mm (40 AWG)
Penetration on steel	36 mm guaranteed 37 mm typical
Spatial resolution, line pairs per mm	1.0 in the direction of scanning 1.0 along the detector
POWER SUPPLY	
Line voltage	230 VAC ± 10%/120 VAC ± 5%
Line frequency	50/60 Hz
Power consumption	Max 0.9 kVA
ENVIRONMENTAL REQUIREMENTS	
Operation:	
- Ambient temperature	0 °C to +40 °C
- Maximum relative humidity	Up to 90%, non-condensing

NEXT GENERATION OF AI FOR AUTOMATIC X-RAY THREAT DETECTION



Our proprietary software A-EYE is an Artificial Intelligence system intended for the automated identification of firearms, firearm components, ammunition, grenades, knives, and brass knuckles. The detection algorithm is an embedded part of our baggage inspection systems.

The automatic detection solution is built using real threat objects that could be expected at events and locations such as theme parks, concerts, sporting events, schools, or other venues which may require security checkpoints.

NEXT GENERATION OF AI FOR AUTOMATIC X-RAY THREAT DETECTION

The A-EYE algorithm considers diverse visual backgrounds in baggage consisting of variously dense-packed items in any bag type. This algorithm increases threat detection capabilities for operators with any level of experience.

Threats are visually highlighted on the screen by colored boxes with category identification, the software allows the system to automatically stop the conveyor when a threat is detected.

A scanner equipped with the A-EYE algorithm ensures increased throughput and social distancing due to minimizing crowded lines at security checkpoints.

KNIVES



Combi knives, paper knife, Jack-knives folded/unfolded/ partially folded, Swiss army knife, Lexan's knife, multi-tools, kitchen knives from 2.36"

HANDGUNS



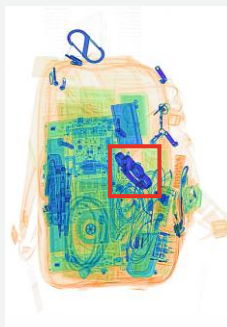
Assembled or disassembled handguns, revolvers, shotguns and submachine guns

AMMUNITION



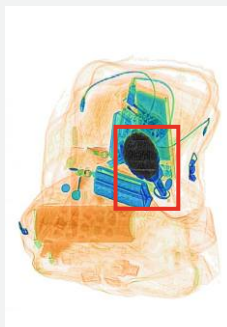
Empty or loaded clips and magazines for automatic guns and revolvers, ammo of various calibers single and in bulk

BRASS KNUCKLES



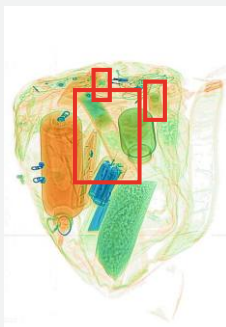
The most commonly used forms, palm grips, and materials were taken into account

GRENADES



Most widespread grenade types like MK2, M26, M67, F1, RGD-5, RG-42, AN-M14, M7A3 CS, and others

FLARES



Colored smoke, smoke balls, flares, not only smoke, but also fire, flashes of various shapes and diameters

CUSTOM AI SOLUTIONS

Our new powerful AI became more flexible and can be adapted for your needs. We identify the list of target items for automatic detection, retrain our algorithms to recognize the objects of interest in required conditions and deliver them to any model of our scanners that meets your requirements.

Common tasks our AI solutions help to complete:

- Prevent theft in various industries
- Recognize foreign objects in products
- Detect threats specific for your domain
- Additional layer for automatic quality control

WARRANTY



WARRANTY BENEFITS

Technical Support
Semi-Annual Preventive Maintenance.
No Labor Costs
No Parts Costs
No Travel Costs
Software upgrades

ANNUAL RADIATION REPORT

Unit Inspection
Operation Area Inspection
Furnished Report for Auditing

EXTENDED WARRANTY AVAILABLE

FIELD SERVICE

24/7 support line ☎ 844.989.6789
✉ support@adanisystems.com



LINEV Systems US. All rights reserved.
The information in this document is
proprietary to LINEV Systems US.
It may not be used, reproduced,
disclosed, or exported without the written
approval of LINEV Systems US.



13631 Poplar Circle,
Conroe, TX 77304, USA
Sales Inquiries 936.588.2064
Sales@linevsystems.com



STANDARD WARRANTY TERMS AND CONDITIONS

GENERAL TERMS AND CONDITIONS

- 1.1. LINEV Systems US Inc. (hereinafter referred to as "LINEV") shall handle warranty related claims regarding equipment manufactured by LINEV.
- 1.2. The products have been manufactured to the highest quality standards and are warranted to the original purchaser only. This warranty is not transferable.
- 1.3. The products are covered by the warranty for a duration of 12 (twelve) months from the date of acceptance by the Customer. The products are guaranteed to be free from defects in workmanship and parts during the warranty period. The defects that occur within the warranty period under normal use and care will be repaired or the defective parts or products will be replaced at LINEV's sole discretion.
- 1.4. LINEV reserves the right to replace the product or relevant part with the same or equivalent product or part rather than repair it. Where a replacement is provided the product or part replaced becomes the property of LINEV. LINEV may replace parts with refurbished parts. Replacement of a product or a part does not extend or restart the warranty period.

2. SERVICE OR REPLACEMENT PROCEDURE AND COST SHARING

- 2.1. The defective product or part shall be sent back to LINEV or a third party indicated by LINEV at LINEV's sole choice and instruction.
- 2.2. The sender shall ensure that the product is properly packaged to ensure that no damage occurs to the product during transit. An explanation of the problem shall be included. The contract number and the product's serial number shall be expressly stated when making a claim under this warranty.
- 2.3. LINEV shall provide the replacement parts or products or repair the defective parts or products free of charge.
- 2.4. LINEV will provide standard shipping and insurance of the replacement and defective parts or products to and from LINEV or a third party as indicated by LINEV. Express shipping may be provided at extra cost.
- 2.5. LINEV will provide warranty-related labor costs as well as the travel-related costs if repairs are deemed the result of equipment failure or defects in workmanship. All other repairs will be billable. Cost estimates for non-warranty repairs will be provided in advance.

3. EXCLUSIONS AND EXCEPTIONS

- 3.1. If no identical product is available for replacement, LINEV reserves the right to replace the product with a device of equal capacity or offer the customer the choice of a product upgrade which may incur an extra cost.
- 3.2. This warranty is limited to defects in workmanship or parts. All defective products or parts will be repaired or replaced. This warranty does not extend to accessories, manuals, packaging, batteries or any other consumable item.
- 3.3. The warranty will not apply if the factory-applied serial number has been altered or removed from the product.
- 3.4. This warranty does not cover damage, malfunction or failure which resulted from alterations, accident, misuse, abuse, fire, liquid spillage, maladjustment of customer controls, use of an incorrect voltage, power surges and dips, thunderstorm activity, acts of God, voltage supply problems, tampering or unauthorized repairs by any person, use of defective or incompatible accessories, exposure to abnormally corrosive conditions or entry by any insect, vermin or foreign object in the Product.
- 3.5. This warranty does not cover damage arising during relocation. Relocation costs are not included in standard warranty.
- 3.6. LINEV will not be liable for any loss, damage or alterations to (1) third party equipment, furniture, hardware or software; or (2) programs, data or information stored on any media or any part of the product, no matter how occurring; or for any loss or damage arising from loss of use, loss of profits or revenue, or for any resulting indirect or consequential loss or damage.
- 3.7. This warranty does not cover normal wear and tear of the product or parts.
- 3.8. LINEV excludes all other warranties, conditions, terms, representations and undertakings whether express or implied.
- 3.9. The terms and conditions related to the validity period and cost sharing arrangements set forward in part. 1.3., 2.4., and 2.5. of this document, can be superseded by related terms and conditions of sales contracts.

🌐 www.linevsystems.com

LINEV Systems US, Inc.

☎ 936-588-2064

13631 Poplar Circle, Conroe, Texas 77304

PREVENTATIVE MAINTENANCE REPORT

BV SERIES MAINTENANCE CHECKLIST / RADIATION LEAKAGE SURVEY REPORT

Facility Name & State: _____ Unit location: _____

ADANI BV Model: _____ S/N: _____ Manufacture date: _____

Item	Description	√ = Pass X = Fail	Comments
1	Inspect the power cord/wires for any damage and repair/replace		
2	Inspect and clean the area around the unit and exterior surfaces as necessary		
3	Verify that required warning labels are in place and legible		
4	Inspect monitor(s) are clean and adjust as necessary		
5	Inspect and adjust curtains as necessary		
6	Clean/vacuum inside cabinet and cooling fans filters as necessary. Check internal cables/wiring for damage		
7	Inspect the x-ray generator for oil leakage		
8	Start the system and verify that cooling fans inside cabinet and PC are running & clean		
9	Inspect belt surface for damages and belt shifting. Adjust as necessary		
10	Check all lights for proper operation. Replace as necessary		
11	Verify proper function of emergency stop switches/panel interlocks		
12	Note BV Software Version: _____ Total number of scans: _____		
13	Scanned image – verify correct functioning of zoom, image enhancement and other features. Make sure that image of good quality		
14	High Penetration mode: Y / N List the kVp _____ mA _____		
15	Check and set the correct time and date on the computer		
16	Check the detector histogram/graph, adjust detector as necessary		
17	Measure the dosage power at operator's workplace at height from floor	100 mm/12 in _____ 900 mm/36 in _____ 1500 mm/60 in _____	
18	Perform a radiation leakage survey to ensure compliance with the requirements of HPS/ANSI 43.17-2009, measured 5 cm from surface accordingly to each surface shown on image below. Readings will be in uSv/hr (microsieverts per hour) unless otherwise noted. Leakage should be below 5.0 uSv/hr. Scatterblock Description: _____ Survey Meter Model: _____ Serial Number: _____ Last Cal Date: _____	Surface 1 _____ Surface 2 _____ Surface 3 _____ Surface 4 _____ Surface 5 _____ Surface 6 _____ Surface 7 _____ Surface 8 _____ Surface 9 _____	

Inspector name (print): _____ Inspector signature: _____ Inspection date: _____

Customer name (print): _____ Customer signature: _____ Date Signed: _____

SERVICE AND SUPPORT

The equipment and services we provide our corrections partners are mission critical to their day-to-day operations. We have established an industry-leading service level agreement that defines, categorizes, and prioritizes service support incidences based upon the overall impact to the customer's organization - the higher the impact, the higher the priority, the quicker the response time. The charts below represent the mechanics of the agreement:

Priority Levels

Level	Name	Description	Type	Operating hours
P1	Scheduled Task	Scheduled maintenance or mutually agreed upon date/time for work to occur. (example: Preventative Maintenance, Installation, Training)	Task	8 am to 6 pm
P2	Low	Low priority where productivity and overall impact to the organization is not affected (example: Light Bulb, Configuration, Software Update)	Problem	8 am to 6 pm
P3	Normal	Medium priority where productivity is impacted for a single user and considered a nuisance (example: Log On, Reporting, Printing, Image Storage/Export)	Problem	8 am to 6 pm
P4	High	High priority where productivity is impacted for multiple/many users and is considered detrimental to the operations of the customer (example: Full features not functioning, intermittent errors, need to reboot the system)	Problem	24x7
P5	URGENT	CRITICAL / OUTAGE where all systems/services are unavailable for all users/offices. No workaround available. (example: Hard error message and the unit will not function/scan, Unit does not power on)	Incident	24x7

Escalation Matrix:

Level	2 Hours	4 Hours	8 Hours	24 Hours	48 Hours	72 Hours
P1	Email Support at support@linevsystems.com or LINEV Systems Service Line 844-989-6789					Service Supervisor
P2	Email Support at support@linevsystems.com or LINEV Systems Service Line 844-989-6789		Service Supervisor	Service Manager	RSM	
P3	Email Support at support@linevsystems.com or LINEV Systems Service Line 844-989-6789		Service Supervisor	Service Manager	RSM	Director
P4	LINEV 844-989-6789	Service Supervisor	Service Manager	RSM	Director	Vice President
P5	LINEV 844-989-6789	Service Supervisor	Service Manager	RSM	Director	Vice President

There are two ways to open a Service Ticket in our system, by calling 844-989-6789 OR by emailing support@linevsystems.com . Reporting a Service Ticket both ways will slow the response times.

When emailing or calling in a Service Ticket we ask that you have the following information ready:

- ❖ Agency Name:
- ❖ System Type:
- ❖ System Serial Number
- ❖ Symptom(s) or Problem(s)
- ❖ Primary POC telephone number and email address
- ❖ Secondary POC telephone number and email address

TRAINING OUTLINE

There is a 38-page PowerPoint presentation that addresses Radiation Safety that is part of the training curriculum. A digital copy will be provided to the facility on completion of training.

Start Up & Shut Down:

Checks to be performed before starting up the BV6045

- Before starting up the BV6045, check all external power connections to ensure they are properly plugged in.
- Make sure no baggage is inside the tunnel.
- Be sure to run X-ray generator warm up if prompted
- Inspect unit and surrounding area for water or moisture before powering up.
- Make sure no emergency buttons are depressed.

How to start up the BV6045

- Turn key switch to on position and press start button
- The system and PC will turn on simultaneously due to an internal PC.
- Once the system is turned on you will see Green Power indicator lights on the system.

How to perform the Functional Test

- To perform the Functional Test place the provided step wedge on conveyor belt and conduct a test scan.
- Watch for “walking” of conveyor belt and any noises coming from drum motor.
- Review the image to ensure quality, correct orientation, and that image filters were applied.

When and how to shut down the BV6045

- On the Operator Power Control Panel turn the power key to the “off” position, this will shut down the PC and the system simultaneously. Green light power indicator will turn off

How to start after an emergency stop

- To properly start the BV6045 after an emergency stop button has been pressed the operator must twist the emergency stop button to reset.
- Turn the key switch on the operator power control panel to “on” position and press “start”

Scanning Sequence:

Where to position parcel to be scanned

- Place the parcel on the conveyor belt so that it will fit through the tunnel opening. Make sure the orientation is that the widest part of the parcel is laying flat on the conveyor belt.
- Parcels should be oriented so that the width and height are considered before the conveyor belt starts its movement.
- If multiple parcels are too be scanned then operator must make sure there is enough space between the parcels.

How to start scanning









- To initiate a scan after the parcel is properly positioned the operator depresses the green arrow indicator on the BagVision software to start the conveyor belt.








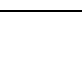
How to stop scanning

- To stop the scan the operator can select the stop button on the screen, indicated by a small red stop button.
- The emergency stop button on the power control panel can be pressed.

Applying filters to the image captured on the screen:

- The program provides for digital processing of X-ray images obtained with use of the system. This is ensured with help of special tools such as zooming and image processing filters:

	Image inversion filter
	Black-and-white filter
	Edge enhancement filter
	Contrast optimization filter
	Filter to manually adjust the gamma-correction factor, the number displayed is the current value of the gamma-correction factor.
	Color filter(always active by default)
	Filter to color organic materials
	Filter to color metallic materials

		Filter to color organic and nonmetallic materials
		Filter to color inorganic and metallic materials
		Filter to color organic materials with the atomic number of 7
		Filter to color organic materials with the atomic number of 8
		Filter to color organic materials with the atomic number of 9
		Filter to color the inspected objects with atomic numbers within the range as specified by the operator
		To display objects with densities within the range as specified by the operator
		Restoring the image visualization parameters to defaults, while returning the image to its original scale

Storing, retrieving, saving to USB Drive:

How to store images in multiple formats

- The BV6045 stores in both a proprietary format .srx as well as j-peg.

How to retrieve images

- All images are date and time stamped. To retrieve a specific image the operator can search using the archive browsing mode. The operator will be able to search using a date and time range.

How to save to USB Drive

- Images will be pulled off of the system by USB drive port. These images can be pulled off in either proprietary format .srx or as a .jpeg

DATE: 2/13/2025

INVITATION TO BID
THIS IS NOT AN ORDER

Page: 5

BID NO.: 50-00147209

JEFFERSON PARISH

PURCHASING DEPARTMENT
P.O. BOX 9
GRETNA, LA. 70054-0009
504-364-2678

VENDOR: 27118 BLANK BID COPY VENDOR

PURCHASING SPECIALIST:
SCHAMPAGNE

As per LSA-RS 47:301 et seq., all governmental bodies are excluded from payment of sales taxes to any Louisiana taxing body. Quotations shall be based on F.O.B. Agency warehouse or jobsite, anywhere within the Parish as designated by the Purchasing Department.

JEFFERSON PARISH reserves the right to cancel all or any part of an order if not shipped promptly. No charges will be allowed for parking or cartage unless specified in quotation. The order must not be filled at a higher price than quoted. JEFFERSON PARISH reserves the right to cancel at any time and for any reason by issuing a THIRTY (30) day written notice to the contractor.

JEFFERSON PARISH is expecting all products to be new and all work to be done in workman-like manner, according to standard practices. Any deviations or alteration from the specifications must be indicated on the bid form for each item and upon request, product data for same must be submitted by the time specified by the Purchasing Department.

DELIVERY: FOB JEFFERSON PARISH

INDICATE DELIVERY DATE ON EQUIPMENT AND SUPPLIES

April 30, 2025

INDICATE STARTING TIME (IN DAYS) FOR CONSTRUCTION WORK

N/A

INDICATE COMPLETION TIME (IN DAYS) FOR CONSTRUCTION WORK

N/A

In the event that addenda are issued with this bid, bidders MUST acknowledge all addenda on the bid form. Bidder must acknowledge receipt of an addendum on the bid form by placing the addendum number as indicated. Failure to acknowledge any addendum on the bid form will result in bid rejection.

Acknowledge Receipt of Addenda: NUMBER: N/A

NUMBER: _____

NUMBER: _____

NUMBER: _____

Jefferson Parish Vendor # 320764

LOUISIANA CONTRACTOR'S LICENSE NO.: (if applicable) 42654292F

*** ALL BIDDERS MUST COMPLETE SECTION BELOW ***	
FIRM NAME: LINEV Systems US, Inc.	
SIGNATURE: (Must be signed here)	TITLE: Vice President
PRINT OR TYPE NAME: John David Bass	
ADDRESS: 13631 Poplar Circle	
CITY, STATE: Conroe, TX	ZIP: 77304
TELEPHONE: (936) 588.2064	FAX: (936) 249.0318
EMAIL ADDRESS: btrumbo@linevsystems.com	

TOTAL PRICE OF ALL BID ITEMS: \$ 44,401.20

INVITATION TO BID FROM JEFFERSON PARISH - continued

BID NO.: 50-00147209

SEALED BID

ITEM NUMBER	QUANTITY	U/M	DESCRIPTION OF ARTICLES	UNIT PRICE QUOTED	TOTALS
			SUPPLY, FURNISH, INSTALL, AND ALL OTHER INCIDENTALS NECESSARY FOR (1) X-RAY INSPECTION SYSTEM FOR JEFFERSON PARISH DEPARTMENT OF GENERAL SERVICES		
1	1.00	EA	0010 - BV6045 X-RAY INSPECTION SYSTEM Includes all hardware and software necessary for complete operational functions. ***Excludes Networking*** With 13 Months included in warranty.	\$ 23,500.00	\$ 23,500.00
2	4.00	EA	0020 - .5 METER ENTRY ROLLER TABLES	\$ 750.30	\$ 3,001.20
3	1.00	EA	0030 - INSTALLATION AND ON-SITE TRAINING	\$ 2,500.00	\$ 2,500.00
4	4.00	YR	0040 - ADDITIONAL MAINTENANCE & SERVICE WARRANTY	\$ 3,600.00	\$ 14,400.00
5	1.00	EA	0050 - FREIGHT/INSIDE DELIVERY *** PER ATTACHED SPECS***	\$ 1,000.00	\$ 1,000.00

PRICING

ITEM DESCRIPTION	QTY	UNIT PRICE	EXTENSION
BV6045 Package X-ray Inspection System	1	\$23,500.00	\$23,500.00
.5 Meter Entry/Exit Roller Table	4	\$750.30	\$3,001.20
Installation and On-Site Training	1	\$2,500.00	\$2,500.00
Shipping	1	\$1,000.00	\$1,000.00
1-year Extended Warranty (at time of sale)	4	\$3,600.00	\$14,400.00
TOTAL			\$44,401.20
The above total includes a comprehensive 5-year warranty.			



CERTIFICATE OF LIABILITY INSURANCE

DATE (MM/DD/YYYY)

8/14/2024

THIS CERTIFICATE IS ISSUED AS A MATTER OF INFORMATION ONLY AND CONFERS NO RIGHTS UPON THE CERTIFICATE HOLDER. THIS CERTIFICATE DOES NOT AFFIRMATIVELY OR NEGATIVELY AMEND, EXTEND OR ALTER THE COVERAGE AFFORDED BY THE POLICIES BELOW. THIS CERTIFICATE OF INSURANCE DOES NOT CONSTITUTE A CONTRACT BETWEEN THE ISSUING INSURER(S), AUTHORIZED REPRESENTATIVE OR PRODUCER, AND THE CERTIFICATE HOLDER.

IMPORTANT: If the certificate holder is an **ADDITIONAL INSURED**, the policy(ies) must be endorsed. If **SUBROGATION IS WAIVED**, subject to the terms and conditions of the policy, certain policies may require an endorsement. A statement on this certificate does not confer rights to the certificate holder in lieu of such endorsement(s).

PRODUCER Wilson, Washburn and Forster 16505 NW 13th Ave Miami FL 33169	CONTACT NAME: PHONE (A/C, No, Ext): 305-666-6636 E-MAIL ADDRESS: acsr@wwfins.com FAX (A/C, No): 305-662-7778
INSURED LINEV Systems US, Inc 13631 Poplar Circle Conroe TX 77304	INSURER(S) AFFORDING COVERAGE INSURER A: Federal Insurance Company INSURER B: Great Northern Insurance Co. INSURER C: Underwriters at Lloyd's London INSURER D: INSURER E: INSURER F:
	NAIC # 20281 20303

COVERAGES**CERTIFICATE NUMBER:** 2028611708**REVISION NUMBER:**

THIS IS TO CERTIFY THAT THE POLICIES OF INSURANCE LISTED BELOW HAVE BEEN ISSUED TO THE INSURED NAMED ABOVE FOR THE POLICY PERIOD INDICATED. NOTWITHSTANDING ANY REQUIREMENT, TERM OR CONDITION OF ANY CONTRACT OR OTHER DOCUMENT WITH RESPECT TO WHICH THIS CERTIFICATE MAY BE ISSUED OR MAY PERTAIN, THE INSURANCE AFFORDED BY THE POLICIES DESCRIBED HEREIN IS SUBJECT TO ALL THE TERMS, EXCLUSIONS AND CONDITIONS OF SUCH POLICIES. LIMITS SHOWN MAY HAVE BEEN REDUCED BY PAID CLAIMS.

INSR LTR	TYPE OF INSURANCE	ADDL INSD	SUBR WVD	POLICY NUMBER	POLICY EFF (MM/DD/YYYY)	POLICY EXP (MM/DD/YYYY)	LIMITS
A	<input checked="" type="checkbox"/> COMMERCIAL GENERAL LIABILITY <input type="checkbox"/> CLAIMS-MADE <input checked="" type="checkbox"/> OCCUR GEN'L AGGREGATE LIMIT APPLIES PER: <input type="checkbox"/> POLICY <input type="checkbox"/> PRO-JECT <input type="checkbox"/> LOC OTHER:			36080531	2/21/2024	2/21/2025	EACH OCCURRENCE \$ 1,000,000 DAMAGE TO RENTED PREMISES (Ea occurrence) \$ 300,000 MED EXP (Any one person) \$ 10,000 PERSONAL & ADV INJURY \$ 1,000,000 GENERAL AGGREGATE \$ 2,000,000 PRODUCTS - COMP/OP AGG \$ 2,000,000 \$
B	<input checked="" type="checkbox"/> AUTOMOBILE LIABILITY <input checked="" type="checkbox"/> ANY AUTO <input type="checkbox"/> ALL OWNED AUTOS <input type="checkbox"/> SCHEDULED AUTOS <input checked="" type="checkbox"/> HIRED AUTOS <input checked="" type="checkbox"/> NON-OWNED AUTOS			73632442	2/21/2024	2/21/2025	COMBINED SINGLE LIMIT (Ea accident) \$ 1,000,000 BODILY INJURY (Per person) \$ BODILY INJURY (Per accident) \$ PROPERTY DAMAGE (Per accident) \$ \$
A	<input checked="" type="checkbox"/> UMBRELLA LIAB <input checked="" type="checkbox"/> OCCUR <input type="checkbox"/> EXCESS LIAB <input type="checkbox"/> CLAIMS-MADE DED RETENTION \$			78198547	2/21/2024	2/21/2025	EACH OCCURRENCE \$ 5,000,000 AGGREGATE \$ 5,000,000 \$
A	WORKERS COMPENSATION AND EMPLOYERS' LIABILITY ANY PROPRIETOR/PARTNER/EXECUTIVE OFFICER/MEMBER EXCLUDED? (Mandatory in NH) If yes, describe under DESCRIPTION OF OPERATIONS below	Y/N <input type="checkbox"/>	N/A	7183-30-12	4/21/2024	4/21/2025	<input checked="" type="checkbox"/> PER STATUTE <input type="checkbox"/> OTH-ER E.L. EACH ACCIDENT \$ 1,000,000 E.L. DISEASE - EA EMPLOYEE \$ 1,000,000 E.L. DISEASE - POLICY LIMIT \$ 1,000,000
C	Professional Liability			PSM0039973541	5/29/2024	5/29/2025	Limit: 2000000/2000000

DESCRIPTION OF OPERATIONS / LOCATIONS / VEHICLES (ACORD 101, Additional Remarks Schedule, may be attached if more space is required)

Locations: 13631 Poplar Circle Conroe TX 77304 & 13635 Poplar Circle Conroe TX 77304

CRIME COVERAGE: Travelers Casualty and Surety Company of America - Policy #107923176 - Employee Theft / Limit \$1,000,000 / Retention \$5,000

CERTIFICATE HOLDER**CANCELLATION**

The Parish of Jefferson, its Districts Departments and Agencies under the direction of the Parish President and the Parish Council
200 Derbigny Street, Suite 3300
Gretna LA 70053

SHOULD ANY OF THE ABOVE DESCRIBED POLICIES BE CANCELLED BEFORE THE EXPIRATION DATE THEREOF, NOTICE WILL BE DELIVERED IN ACCORDANCE WITH THE POLICY PROVISIONS.

AUTHORIZED REPRESENTATIVE

© 1988-2014 ACORD CORPORATION. All rights reserved.