

ZEE ZEEs®



Zee Zees Applesauce Cup, Original, Unsweetened

Bid Specifications:

Shelf stable applesauce cups must provide ½ cup fruit equivalent under the NSLP guidelines. Individual servings must be a minimum of 4.5 oz net weight. Cups must be shelf stable in dry storage for 18 months. Must be made in a nut-free facility. All natural ingredients with no added sugar, artificial flavors, artificial colors or sweeteners. Flavors to include Unsweetened Original, Unsweetened Cinnamon, Unsweetened Strawberry, Unsweetened Strawberry Banana, Unsweetened Peach, Unsweetened Cherry, Unsweetened Mango Peach, Unsweetened Pear, Unsweetened Dreamsicle & Unsweetened Spicy Watermelon. Product contains zero grams fat, 100% Vitamin C. Made with 100% domestically grown fruit. Pack: 96/4.5 oz. Also available as a commodity processed product utilizing USDA donated fruit.

Acceptable Brand: National Food Group/Zee Zees

Preparation and Additional Information:

Instructions for Preparation and Cooking:

Chill for 2 hours prior to serving.

Logistics Information:

Gross Weight: 29 lbs

Case Dimensions: 17.75 X 11.75 X 7.25

Pallet Count: 56

Double Stack: No

Cube: 0.875

Block and Tier: 8 and 7

The information provided above is, to the knowledge of National Food Group, true and accurate based on information provided to National Food Group; provided that National Food Group does not make any express or implied warranties with respect to any such information shall have no liability for any inaccuracies contained in any such information.

National Food Group

Email: info@nationalfoodgroup.com . Direct: 800.886.6866

Fax: 248.669.3000

46820 Magellan Dr., Suite A, Novi, MI 48377-2454

www.nationalfoodgroup.com . Call Toll Free: 800.886.6866

ZEE ZEEs®



Zee Zees Applesauce Cup, Original, Unsweetened

Product Details:

Item Number: A3500
Pack Size: 96/4.5 oz.
Serving Per Case: 96
Net Weight: 27 lbs.

Kosher: Yes
Meal Contribution: 1/2c FRT
Class: Always Available
Shelf Life: 1 1/2 years
Temperature Class: Dry
Cook State: NA
GTIN-12 UPC: 185043000702
GTIN-14: 00185043000702

Sales Price Per: NA
Case Price: NA

Ingredients:

Apples, Water, Ascorbic Acid (Vitamin C).

Allergen Statement:

Product and facility are free from the Top 8 Allergens.

Benefits and Suggested Use:

Fat free shelf stable flavorful applesauce cups with attractive peel-top lids are great for lunch or snack!

Nutrition Facts

This is a representation of the nutritional label. The nutritional label on the product may vary.

Serving Size 4.5 oz.

Amount Per Serving

Calories 53

% Daily Value *

Total Fat 0g 0%

Saturated Fat 0g 0%

Trans Fat 0g

Cholesterol 0mg 0%

Sodium 3mg 0.1%

Total Carbohydrate 14g 5%

Dietary Fiber 2g 7%

Total Sugars 12g

Incl. Added Sugars 0g 0%

Protein 0g --

Vitamin D 0 mcg 0%

Calcium 5 mg 0.4%

Iron 0 mg 0%

Potassium 93 mg 2%

* The % Daily Value tells you how much a nutrient in a serving of food contributes to a daily diet. 2,000 calories a day is used for general nutrition advice.

National Food Group

Email: info@nationalfoodgroup.com . Direct: 800.886.6866

Fax: 248.669.3000

46820 Magellan Dr., Suite A, Novi, MI 48377-2454

www.nationalfoodgroup.com . Call Toll Free: 800.886.6866

4.5OZ MOTTS AS APPLE UNSW TUB 72PK

Dot #: 613902

Mfr #: 10065615

GTIN: 00014800003260

Supplier: Mott's LLP Snapple Beverage Corp.

Description: 4.5OZ MOTTS AS APPLE UNSW TUB
72PK

Attachments

Nutrition Fact Label
Website

MOTTSUNSWTASINGREDIENTS.JPG
WEBSITE

Product Information

Classification:	Fruit - Prepared/Processed (Shelf Stable) (10000206)
Dimensions (HxWxD):	7.88 x 9.31 x 17.81 Inch
Weight Gross / Net:	24.6 Pound / 20.23 Pound
Origin:	(US) UNITED STATES
Storage Temperature:	50° to 90°
Pallet Configuration:	Ti:10 Hi:8
Servings Per Container:	72

Features and Benefits (Case GTIN: 00014800003260)

Features:	SINCE 1842. NATURAL APPLESAUCE. EXCELLENT SOURCE OF VITAMIN C. THIS UNIT NOT FOR RETAIL SALE. ALL NATURAL INGREDIENTS AND VITAMIN C. NO SUGAR ADDED. 1 SERVING OF FRUIT PER SNACK CONTAINER. 60 CALORIES PER CONTAINER.
Preparation and Cooking:	Prepared - SERVE CHILLED.MADE FROM REAL FRUIT WHICH MAY CONTAIN SEEDS, STEMS OR OTHER PIECES OF NATURAL FRUIT. NATURAL SEPARATION MAY OCCUR. STIR WELL BEFORE ENJOYING.
Serving Suggestions:	SERVE CHILLED.MADE FROM REAL FRUIT WHICH MAY CONTAIN SEEDS, STEMS OR OTHER PIECES OF NATURAL FRUIT. NATURAL SEPARATION MAY OCCUR. STIR WELL BEFORE ENJOYING.
Storage:	SERVE CHILLED.MADE FROM REAL FRUIT WHICH MAY CONTAIN SEEDS, STEMS OR OTHER PIECES OF NATURAL FRUIT. NATURAL SEPARATION MAY OCCUR. STIR WELL BEFORE ENJOYING.

Nutritionals and Ingredients (Case GTIN: 00014800003260)

Representation of label(s). The actual nutritional label(s) and ingredients may vary slightly

Nutrition Facts (Prepared)	
72 Servings Per Container	
Serving Size	4.5 oz
Amount Per Serving	
Calories	60
% Daily Value*	
Total Fat 0.0 g	0.0%
Saturated Fat 0.0 g	0.0%
Trans Fat 0.0 g	
Cholesterol 0.0 mg	0.0%
Sodium 0.0 mg	0.0%
Total Carbohydrate 14 g	5%
Dietary Fiber 1 g	4%
Insoluble Fiber 0.0 g	0.0%
Sugar 12 g	0.0%
Added Sugar 12 g	0.0%
Protein 0.0 g	0.0%
Vitamin D 0.0 IU	0.0%
Potassium 95 mg	3%
Calcium 0.0 mg	0.0%
Vitamin E 0.0 IU	0.0%
Riboflavin 0.0 mg	0.0%
Niacin 0.0 mg	0.0%
Vitamin B6 0.0 mg	0.0%
Vitamin B12 0.0 µg	0.0%
Phosphorous 0.0 mg	0.0%
Magnesium 0.0 mg	0.0%
* The % Daily Value (DV) tells you how much a nutrient in a serving of food contributes to a daily diet. 2,000 calories a day is used for general nutrition advice.	

Child Nutrition Label:

No

Ingredients:

APPLES, WATER, ASCORBIC ACID (VITAMIN C).

Allergens and Diet (Case GTIN: 00014800003260)

Representation of allergens and dietary claims. The actual allergens and dietary claims may vary slightly.

Allergen Values (FDA)**Free From:**Peanuts, Tree Nuts, Eggs, Milk, Fish, Crustacean, Soy, Wheat,
Sesame Seeds

Powered by Sync/PDI

4.5OZ MOTTS AS STRWBRY UNSW TUB 72PK

Dot #: 613901

Mfr #: 10065614

GTIN: 00014800003253

Supplier: Mott's LLP Snapple Beverage Corp.

Description: 4.5OZ MOTTS AS STRWBRY UNSW TUB
72PK

Product Information

Classification:	Fruit - Prepared/Processed (Shelf Stable) (10000206)
Dimensions (HxWxD):	7.88 x 9.31 x 17.81 Inch
Weight Gross / Net:	24.6 Pound / 20.23 Pound
Origin:	(US) UNITED STATES
Storage Temperature:	50° to 90°
Pallet Configuration:	Ti:10 Hi:8
Servings Per Container:	72

Features and Benefits (Case GTIN: 00014800003253)

Features:	SINCE 1842. STRAWBERRY APPLESAUCE NATURALLY FLAVORED WITH OTHER NATURAL FLAVORS. EXCELLENT SOURCE OF VITAMIN C. THIS UNIT NOT FOR RETAIL SALE. ALL NATURAL INGREDIENTS AND VITAMIN C. NO SUGAR ADDED. 1 SERVING OF FRUIT PER SNACK CONTAINER. 60 CALORIES PER CONTAINER.
Preparation and Cooking:	Prepared - SERVE CHILLED.MADE FROM REAL FRUIT WHICH MAY CONTAIN SEEDS, STEMS OR OTHER PIECES OF NATURAL FRUIT. NATURAL SEPARATION MAY OCCUR. STIR WELL BEFORE ENJOYING.
Serving Suggestions:	SERVE CHILLED.MADE FROM REAL FRUIT WHICH MAY CONTAIN SEEDS, STEMS OR OTHER PIECES OF NATURAL FRUIT.NATURAL SEPARATION MAY OCCUR. STIR WELL BEFORE ENJOYING.
Storage:	SERVE CHILLED.MADE FROM REAL FRUIT WHICH MAY CONTAIN SEEDS, STEMS OR OTHER PIECES OF NATURAL FRUIT. NATURAL SEPARATION MAY OCCUR. STIR WELL BEFORE ENJOYING.

Ocean Spray® Jellied & Whole Berry Cranberry Sauce

Available in an Easy-Grip resealable plastic container or a traditional #10 can.

- Contributes to background flavor and provides platform for other flavors.
- Adds moisture and color to a variety of dishes.
- Whole Berry Cranberry Sauce adds an authentic fruit texture.
- Jellied Cranberry Sauce adds a subtle smooth texture.
- Fat-free flavor enhancer.



Ocean Spray® Cranberry Sauce expands a chef's creativity by adding tantalizing flavor, color and texture to recipes and presentations. Add zing to sauces, glazes and marinades; put extra Viva! in a breakfast tortilla; snap up a muffin mix; make a salad dressing dance; spike up a chocolate sauce; give pound cake razzle-dazzle; or, mix with mayonnaise or mustard, and make a simple sandwich unforgettable.

Ocean Spray® Cranberry Sauce adds vibrant color, texture and unique sweet/tart flavor – with the healthy goodness of fruit!

	Sandwich Spread	Glaze Ingredient	Baked Goods Ingredient	Cocktail Ingredient	Entree Ingredient	Dessert Ingredient
Full Service Restaurant	✓	✓	✓	✓	✓	✓
Quick Service Restaurant (includes chicken roaster)	✓	✓				
Healthcare	✓		✓		✓	✓
Business and Industry	✓		✓		✓	✓
Supermarket Deli (includes chicken roaster)	✓	✓				✓

CASE INFORMATION							
DESCRIPTION	CASE PACK	WEIGHT (lbs)	CUBE	PALLET	LENGTH (in)	WIDTH (in)	HEIGHT (in)
101 oz Resealable Jellied Cranberry Sauce	6/101 oz	40.76	1.03	49	19.63	13.31	8.13
101 oz Resealable Whole Cranberry Sauce	6/101 oz	40.76	1.03	49	19.63	13.31	8.13
#10 Can Jellied Cranberry Sauce	6/#10	49.01	.99	48	18.83	12.26	7.50
#10 Can Whole Cranberry Sauce	6/#10	49.01	.99	48	18.83	12.26	7.50

CASE UPC	DESCRIPTION	NUTRITIONAL INFORMATION – PER 1/4 CUP SERVING							
		SERVING SIZE	CAL	TOTAL FAT (g)	TOTAL CARBS (g)	SUGARS (g)	PROTEIN (g)	VITAMIN C (%DV)	SODIUM (mg)
01401	101 oz Resealable Jellied Cranberry Sauce	1/4 cup	110	0	28	24	0	0	10
01436	101 oz Resealable Whole Cranberry Sauce	1/4 cup	110	0	27	22	0	0	10
01400	#10 Can Jellied Cranberry Sauce	1/4 cup	110	0	28	24	0	0	10
01435	#10 Can Whole Cranberry Sauce	1/4 cup	110	0	27	22	0	0	10

Ingredients:

JELLIED CRANBERRY SAUCE: Cranberries, High Fructose Corn Syrup, Water, Corn Syrup

WHOLE CRANBERRY SAUCE: Cranberries, High Fructose Corn Syrup, Corn Syrup, Water

Sustainability Statement

Ocean Spray is committed to managing our business in a way that minimizes our environmental impact. We believe that a focus on strong environmental management as an integral part of the way we manage our business will strengthen performance and ensure a sustainable future for our suppliers, customers and consumers.



Ocean Spray Cranberries, Inc.
A Grower Cooperative
Lakeville-Middleboro, MA 02349 USA

For more information call 1-800-882-8343

©2015 Ocean Spray Cranberries, Inc.

For more recipes, product information,
and other package size options, visit
www.oceanspraysolutions.com



TECHNICAL PRODUCT SPECIFICATION SHEET

Product

FRUIT COCKTAIL IN PEAR JUICE

Continuing Guaranty and Hold Harmless Agreement

Del Monte Foods, Inc. hereby guarantees and warrants that each and every article of food or other product sold by Del Monte shall be:

- Not adulterated or misbranded within the meaning of the Federal Food, Drug and Cosmetic Act of June 25, 1938 (the "Federal Act"), as amended, the Federal Fair Packaging and Labeling Act, the regulations issued thereunder, or within the meaning of any state food and drug law, the adulteration and misbranding provisions of which are identical with or substantially the same as those found in the Federal Act, and that such goods will not be produced or shipped in violation of Section 404 or 301(d) of said Federal Act.
- Merchantable quality, fit for the ordinary purposes for which such food products are normally used and wholesome and fit for human consumption.

Del Monte agrees to indemnify, defend and hold Buyer harmless from all actions, suits, claims and proceedings resulting from or arising out of breach of the foregoing warranties.

Notwithstanding the foregoing, where goods are manufactured and shipped by Del Monte according to and under labels provided by Buyer, Del Monte's responsibility for misbranding shall be limited to that resulting from the failure of the product to conform to the product specifications furnished by Buyer. Under no circumstances shall Del Monte be liable for incidental or consequential damages, including but not limited to lost profits.

This Guaranty revokes and supersedes any warranty or guarantee previously given by Del Monte. It is effective as of the date of this specification and shall continue to be effective until it is revoked by Del Monte.

Product Code
FMF**Date**
2/24/16**Supersede Date**
8/19/10**Ingredients:**

FRUIT (PEACHES, PEARS, GRAPES, PINEAPPLE, CHERRIES CHERRIES, CARMINE), PEAR JUICE (WATER, PEAR JUICE CONCENTRATE).

Product Description:

Fruit Cocktail in Pear Juice is a canned food prepared from a mixture of diced Yellow Clingstone peaches, diced Bartlett pears, whole seedless grapes, pineapple tidbits, and halved cherries with pear juice as the packing medium. No sulfites added.

Product Specifications:

Net Weight	105.0 oz
Size/Style	All units of each ingredient must be reasonably uniform in size.
Color	Each fruit component must possess a reasonably uniform bright, characteristic color.
Texture	Reasonably uniform and typical of properly ripened fruit.
Flavor & Odor	Good overall flavor and sweetness. Must be free of any objectionable flavor or odor of any kind.
Clarity	Reasonably clear, may contain only a slight amount of suspended material.
Foreign Materials	None allowed

Microbiological Specifications:

Fruit Cocktail in Pear Juice is commercially sterile. The product shall conform to good manufacturing practices and to applicable industry standards.

Packaging Information:

The product is packed in conventional 603x700 (#10) cans, which are then packaged into corrugated boxes, 6 cans to a box, 56 cases per pallet standard. Each container to be conspicuously marked with contents, net weight, manufacturer's name and address, and identifying date code.

Shelf Life:

The product has a shelf life of 36 months

Allergen:

None



Del Monte Foods, Inc.

30.01.168

TECHNICAL PRODUCT SPECIFICATION SHEET

FRUIT COCKTAIL IN PEAR JUICE - FMF

Ingredients:

FRUIT (PEACHES, PEARS, GRAPES, PINEAPPLE, CHERRIES CHERRIES, CARMINE), PEAR JUICE (WATER, PEAR JUICE CONCENTRATE).

Nutrition Facts

Serving Size 1/2 cup (124g)

Servings Per Container see above

Amount Per Serving

Calories 60 Calories from Fat 0

% Daily Value*

Total Fat 0g 0%

Saturated Fat 0g 0%

Trans Fat 0g

Cholesterol 0mg 0%

Sodium 5mg 0%

Potassium 150mg 4%

Total Carbohydrate 15g 5%

Dietary Fiber 1g 4%

Sugars 12g

Protein 0g

Vitamin A 2% • Vitamin C 4%

Calcium 0% • Iron 2%

*Percent Daily Values are based on a 2,000 calorie diet. Your daily values may be higher or lower depending on your calorie needs:

	Calories:	2,000	2,500
Total Fat	Less than	65g	80g
Saturated Fat	Less than	20g	25g
Cholesterol	Less than	300mg	300mg
Sodium	Less than	2,400mg	2,400mg
Potassium		3,500 mg	3,500 mg
Total Carbohydrate		300g	375g
Dietary Fiber		25g	30g

Calories per gram:

Fat 9 • Carbohydrate 4 • Protein 4

04218

6/10 MANDARIN ORANGE IN



PACKAGING

SCC Code:	10038900042186	Unit Size:	100 OZ
Kosher:		Case Gross Weight (imperial):	45.00 LB
Unit Quantity:	6	Refrigerated Shelf Life:	N/A
Ambient Shelf Life:	N/A	Servings Per Case:	150
Frozen Shelf Life:			

NUTRITION

Nutrition Facts

Serving Size 1/2 cup
Servings Per Container 25

Amount Per Serving

Calories 80

Calories from Fat 0

% Daily Value*

Total Fat	0 g	0%
Saturated Fat	0 g	0%
Trans Fat	0 g	
Cholesterol	0 mg	0%
Sodium	0 mg	0%
Potassium	110 mg	3%
Total Carbohydrate	21 g	7%
Dietary Fiber	1 g	4%
Sugars	20 g	
Protein	1 g	

Vitamin A	300 IU	•	Vitamin C	10 %
Calcium	2 %	•	Iron	0 %

*Percent Daily Values are based on a 2,000 calorie diet. Your daily values may be higher or lower depending on your calorie needs.

	Calories:	2,000	2,500
Total Fat	Less than	65g	80g
Sat Fat	Less than	20g	25g
Cholesterol	Less than	300mg	300mg
Sodium	Less than	2,400mg	2,400mg
Potassium		3,500mg	3,500mg
Total Carbohydrate		300g	375g
Dietary Fiber		25g	30g

Calories per gram:
Fat 9 • Carbohydrate 4 • Protein 4

GENERAL DESCRIPTION

mandarin oranges in light syrup 6/10 One serving = 1-1/2 Fruit Exchanges.

LIST OF INGREDIENTS

Mandarin Oranges, Water, Sugar and Citric Acid.

PREPARATION AND COOKING INSTRUCTIONS

Ready to Eat



MARKETING SPECIFICATIONS

Confidential Information: This document contains confidential information of Dole Packaged Foods, LLC and is subject to terms and conditions of the confidentiality and/or manufacturing or co-packing agreement between Dole Packaged Foods, LLC and Packer.

ITEM CODE	4218	ISSUE NUMBER	3
PRODUCT NAME	#10 Mandarin Orange Segments in Light Syrup in Tin Can	ISSUE DATE	January 15, 2019

GENERAL INFORMATION

INTENDED CUSTOMER	US
PRODUCT DESCRIPTION	Mandarin Orange Segments are packed in light syrup with citric acid and are processed by heat in hermetically sealed containers.
COUNTRY OF ORIGIN	China
INGREDIENTS	Mandarin Orange Segments, Water, Sugar, Citric Acid

PRODUCT SPECIFICATIONS

NET WEIGHT	Minimum: 106 ounces (3,005 grams)
DRAINED WEIGHT	Minimum Average: 60 ounces (1,700 grams)
UNITS AND CONTAINER	13 - 35 segments per 100 grams
BRIX	Range: 14° - 18° Brix
pH	Range: 3.3 – 3.7

PHYSICAL CHARACTERISTICS AND DEFECTS

COLOR	Segments should be a bright, orange color; characteristic of properly ripened and processed fruit.
UNIFORMITY OF SIZE AND SHAPE	Practically uniform
DEFECTS	Practically free
CHARACTER	Reasonably good
FLAVOR AND ODOR	Characteristic of ripe, mature mandarin oranges with no noticeable off-flavor or odor.

CHEMICAL AND MICROBIOLOGICAL CHARACTERISTICS

MICROBIOLOGICAL	Commercially sterile; free from pathogenic organisms.
-----------------	---

PACKAGING

CODING	On container ends and label
PRIMARY CONTAINER	Plain tin body: 603 x 700
SECONDARY CONTAINER	Fiber case

STORAGE AND SHIPMENT

STORAGE	Store in cool, dry area.
---------	--------------------------



MARKETING SPECIFICATIONS

Confidential Information: This document contains confidential information of Dole Packaged Foods, LLC and is subject to terms and conditions of the confidentiality and/or manufacturing or co-packing agreement between Dole Packaged Foods, LLC and Packer.

ITEM CODE	4218	ISSUE NUMBER	3
PRODUCT NAME	#10 Mandarin Orange Segments in Light Syrup in Tin Can	ISSUE DATE	January 15, 2019
SHELF LIFE	Three (3) years under proper storage and handling conditions.		



Del Monte Foods, Inc.

30.61.116

TECHNICAL PRODUCT SPECIFICATION SHEET

Product

PEAR DICED IN PEAR JUICE

Continuing Guaranty and Hold Harmless Agreement

Del Monte Foods, Inc. hereby guarantees and warrants that each and every article of food or other product sold by Del Monte shall be:
- Not adulterated or misbranded within the meaning of the Federal Food, Drug and Cosmetic Act of June 25, 1938 (the "Federal Act"), as amended, the Federal Fair Packaging and Labeling Act, the regulations issued thereunder, or within the meaning of any state food and drug law, the adulteration and misbranding provisions of which are identical with or substantially the same as those found in the Federal Act, and that such goods will not be produced or shipped in violation of Section 404 or 301(d) of said Federal Act.
- Merchantable quality, fit for the ordinary purposes for which such food products are normally used and wholesome and fit for human consumption.
Del Monte agrees to indemnify, defend and hold Buyer harmless from all actions, suits, claims and proceedings resulting from or arising out of breach of the foregoing warranties.

Notwithstanding the foregoing, where goods are manufactured and shipped by Del Monte according to and under labels provided by Buyer, Del Monte's responsibility for misbranding shall be limited to that resulting from the failure of the product to conform to the product specifications furnished by Buyer. Under no circumstances shall Del Monte be liable for incidental or consequential damages, including but not limited to lost profits.

This Guaranty revokes and supersedes any warranty or guarantee previously given by Del Monte. It is effective as of the date of this specification and shall continue to be effective until it is revoked by Del Monte.

Product Code

UFG

Date

11/17/15

Supersede Date

NEW

Ingredients:

PEARS, WATER, PEAR JUICE CONCENTRATE.

Product Specifications:

Net Weight	105 oz
Color	Practically uniform light greenish-white to light beige-white color.
Clarity	Syrup should be clear not cloudy.
Flavor and Odor	Normal, typical of properly ripened pears.
Character	Possessing good edibility, not too soft or too hard.
Foreign Material	None allowed

Microbiological Specifications:

Commercially sterile. Product conforms to good manufacturing practices and to applicable industry standards.

Packaging Information:

The product is canned in conventional 603x700 (#10) cans which are then packed in corrugated boxes, six (6) cans to a case. Each container to be conspicuously marked with contents, net weight, manufacturer's name and address, and identifying date code.

Shelf Life:

33 months

Allergen:

None

Del Monte

PRODUCT:	Diced Pears
Product description:	packed in juice from concentrate
Variety Symbol:	UFG
Version:	B
Manufacturing Facility:	Yakima

Prepared By: Jcurtis

Issue Date: 8/19/2015

Supersedes: 6/10/2011

Container Size
#10 can

Net Weight Statement
105OZ (6.6LB) 3ka

Servings Per Container*
about 24

Nutrition Facts

Serving Size 1/2 cup (124g)
Servings Per Container about 24

Amount Per Serving

Calories 60 Calories from Fat 0

% Daily Value*

Total Fat 0g 0%

Saturated Fat 0g 0%

Trans Fat 0g

Cholesterol 0mg 0%

Sodium 5mg	0%
------------	----

Potassium 115mg	3%
-----------------	----

Total Carbohydrate 16g 5%

Dietary Fiber 2g	8%
------------------	----

Sugars 11g

Protein 0g

Vitamin A 0% • Vitamin C 4%

Calcium 2% • Iron 2%

*Percent Daily Values are based on a diet of other people's secrets. Your daily values may be higher or lower depending on your calorie needs:

depending on your calorie needs:

Calories:	2,000	2,500
-----------	-------	-------

Total Fat	Less than 65g	80g
-----------	---------------	-----

Saturated Fat	Less than	20g	25g
Cholesterol	Less than	300mg	300mg

Cholesterol	Less than	300mg	300mg
Sodium	Less than	2,400mg	2,400mg

Polassium	3,500 mg	3,500 mg
Total Carbohydrate	300g	375g

Total Carbohydrate	300g	375g
Dietary Fiber	25g	30g

Calories per gram:
Fat 9 • Carbohydrate 4 • Protein 4

Note: Print size and layout do not meet exact NLEA requirements.
The above label format must be used for label copy.

INGREDIENTS:

PEARS, WATER, PEAR JUICE CONCENTRATE.

Nutrient Content Claims:

Health Claims:
n/a

Other Specific Claims:
n/a

Other Required Label Information:
n/a

Country of Origin:
Country Code

Product of USA
U

Kosher Symbol

YES - Triangle K

Gluten Free

YES

Notes:

06.09.11 LLMacioce - made final
servings per container; serv size, nutrient content claims; reformatted ingredient statement
8/19/15 Jcurtis - pulled from archive, updated per Genesis. Version B.



Del Monte Foods, Inc.

30.01.111

TECHNICAL PRODUCT SPECIFICATION SHEET

Product
YELLOW CLINGSTONE PEACHES, DICED IN PEAR JUICE

Food Guarantee

Seller guarantees that no articles of food sold by seller to buyer during the period in which this guarantee is effective will be adulterated or misbranded within the meaning of the Federal Food, Drug and Cosmetic Act of June 25, 1938, as amended, or within the meaning of any state food and drug law, the adulteration and misbranding provisions of which are identical with or substantially the same as those found in the Federal Act, and that such goods will not be produced or shipped in violation of Section 404 or 301(d) of said Federal Act; provided, however, that the seller does not guarantee against such goods becoming adulterated or misbranded within the meaning of said Act or Acts after shipment by reason of causes beyond seller's control; and provided also that where goods are shipped under buyer's labels, seller's responsibility for misbranding shall be limited to that resulting from the failure of the product to conform to the label furnished by the buyer. Buyer undertakes to save seller harmless from any liability under said Act or Acts for any other type of misbranding arising out of the use of buyer's labels, or for any liability under said Act or Acts for misbranding where buyer insists upon the use of any label after seller has questioned in writing the use of such label.

This guarantee shall become effective when it has been signed by both parties and shall continue to be effective until it is revoked by either party by the giving of ten (10) days' written notice to the other party.

Product Code

KUP (SID 04036)

Date

10/27/10

Supersede Date

12/4/06

Ingredients:

Peaches, Water, Pear Juice Concentrate

Product Description:

Diced Yellow Clingstone Peaches in Pear Juice is a canned food prepared from matured Yellow Clingstone Peaches, which are pitted, peeled and cut into approximately 0.6" cubes with pear juice as the packing medium. No Sulfites added.

Product Specifications:

Net Weight	105.0 oz
Drained Weight	70.0 oz average
U.S. Grade	Choice
Color	Reasonably bright color of light orangish-yellow
Texture	Units are intact; reasonably good texture, typical of properly processed peaches.
Flavor & Odor	Normal, free from any objectionable flavor and odor
Soluble Solids	14-17
Size	Reasonably uniform in size of approximately 0.6" cubes
Defects	Reasonably free from pit material, blemished units and any other defects.

Microbiological Specifications:

Commercially sterile. Product shall conform to good manufacturing practices and to applicable industry standards.

Packaging Information:

The product is canned in conventional 603x700 (#10) cans which are then packed in corrugated boxes, six (6) cans to a case. 56 cases per pallet standard. Each container to be conspicuously marked with contents, net weight, manufacturer's name and address, and identifying date code.

<u>UPC Code</u>	<u>Case Weight</u>	<u>Case Dimensions</u>	<u>Cube</u>	<u>Tl / Hi</u>
24000 04036	44.3 lbs.	18.687 x 12.5 x 7.1	.98	8 / 7

Shelf Life:

The finished product has a shelf life of 33 months

Allergen:

None

NUTRITION FACTS

Serving Size 1/2 cup (124 g)

Amount Per Serving

Calories 60 Calories from Fat 0

	% Daily Value*
Total Fat 0 g	0 %
Saturated Fat 0 g	0 %
Trans Fat 0 g	
Cholesterol 0 mg	0 %
Sodium 10 mg	0 %
Total Carbohydrate 14 g	5 %
Dietary Fiber 1 g	3 %
Sugars 13 g	
Protein 0 g	

Vitamin A 6 % ■ Vitamin C 2 % ■ Calcium 0 % ■ Iron 0 %

*Percent Daily Values are based on a 2,000 calorie diet. Your daily values may be higher or lower depending on your calorie needs:

	Calories	2000	2500
Total Fat	Less than	65g	80g
- Sat Fat	Less than	20g	25g
Cholesterol	Less than	300mg	300mg
Sodium	Less than	2,400mg	2,400mg
Total Carbohydrate		300g	375g
Dietary Fiber		25g	30g

Calories per gram:

Fat 9 ■ Carbohydrate 4 ■ Protein 4

Front Panel

- 1/3 less calories than YC Peaches in Heavy Syrup
- Reference location of nutrition information

Information Panel

- Fruit Naturals YC Peaches in Pear Juice from Concentrate 60 calories per serving; YC Peaches in Heavy Syrup 100 calories per serving



Product

YELLOW CLINGSTONE PEACHES, SLICED IN PEAR JUICE

Continuing Guaranty and Hold Harmless Agreement

Del Monte Foods, Inc. hereby guarantees and warrants that each and every article of food or other product sold by Del Monte shall be:

- Not adulterated or misbranded within the meaning of the Federal Food, Drug and Cosmetic Act of June 25, 1938 (the "Federal Act"), as amended, the Federal Fair Packaging and Labeling Act, the regulations issued thereunder, or within the meaning of any state food and drug law, the adulteration and misbranding provisions of which are identical with or substantially the same as those found in the Federal Act, and that such goods will not be produced or shipped in violation of Section 404 or 301(d) of said Federal Act.
- Merchantable quality, fit for the ordinary purposes for which such food products are normally used and wholesome and fit for human consumption.

Del Monte agrees to indemnify, defend and hold Buyer harmless from all actions, suits, claims and proceedings resulting from or arising out of breach of the foregoing warranties.

Notwithstanding the foregoing, where goods are manufactured and shipped by Del Monte according to and under labels provided by Buyer, Del Monte's responsibility for misbranding shall be limited to that resulting from the failure of the product to conform to the product specifications furnished by Buyer. Under no circumstances shall Del Monte be liable for incidental or consequential damages, including but not limited to lost profits.

This Guaranty revokes and supersedes any warranty or guarantee previously given by Del Monte. It is effective as of the date of this specification and shall continue to be effective until it is revoked by Del Monte.

Product Code

KMP

Date

8/18/15

Supersede Date

NEW

Ingredients:

PEACHES, WATER, PEAR JUICE CONCENTRATE.

Product Specifications:

Net Weight:	105oz
Color:	A practically uniform bright yellow to yellow-orange color typical of well ripened canned peaches.
Size & Style:	Practically uniform as defined by USDA Grade A or B standards.
Texture/Character:	Reasonably tender and fleshy; typical of mature, fully ripened, properly prepared peaches. Units must be intact and possess reasonably defined edges.
Flavor/Odor:	Normal in all respects.
Clarity:	Reasonably clear, may contain only a slight amount of suspended material.
Foreign Material:	None allowed.

Microbiological Specifications:

Commercially sterile. Product shall conform to good manufacturing practices and to applicable industry standards.

Packaging Information:

The product is canned in conventional 603x700 (#10) cans which are then packed in corrugated boxes, six (6) cans to a case. 56 cases per pallet standard. Each container to be conspicuously marked with contents, net weight, manufacturer's name and address, and identifying date code.

Shelf Life:

The finished product has a shelf life of 33 months.

Allergen:

None



TECHNICAL PRODUCT SPECIFICATION SHEET

YELLOW CLINGSTONE PEACHES, SLICED IN PEAR JUICE – KMP

Ingredients:

PEACHES, WATER, PEAR JUICE CONCENTRATE.

Nutrition Facts			
Serving Size 1/2 cup (124g)			
Servings Per Container see above			
Amount Per Serving			
Calories 60		Calories from Fat 0	
		% Daily Value*	
Total Fat 0g		0%	
Saturated Fat 0g		0%	
Trans Fat 0g			
Cholesterol 0mg		0%	
Sodium 5mg		0%	
Potassium 150mg		4%	
Total Carbohydrate 13g		4%	
Dietary Fiber 1g		4%	
Sugars 11g			
Protein 0g			
Vitamin A 6%		• Vitamin C 4%	
Calcium 2%		• Iron 2%	
*Percent Daily Values are based on a 2,000 calorie diet. Your daily values may be higher or lower depending on your calorie needs:			
	Calories:	2,000	2,500
Total Fat	Less than	65g	80g
Saturated Fat	Less than	20g	25g
Cholesterol	Less than	300mg	300mg
Sodium	Less than	2,400mg	2,400mg
Potassium		3,500 mg	3,500 mg
Total Carbohydrate		300g	375g
Dietary Fiber		25g	30g
Calories per gram:			
Fat 9 • Carbohydrate 4 • Protein 4			

36/4OZ DICED PEARS IN JUICE

Dot #: 431613**Mfr #:** 03019**GTIN:** 10038900030190**Supplier:** DOLE PACKAGED FOODS, LLC**Description:** 36/4OZ DICED PEARS IN JUICE

Attachments

Nutrition Fact Label

10038900030190_L5.jpg

Product Information

Classification:	Fruit - Prepared/Processed (Shelf Stable) (10000206)
Dimensions (HxWxD):	6.38 x 9.69 x 12.81 Inch
Weight Gross / Net:	10.85 Pound / 9 Pound
Origin:	(TH) THAILAND (CN) CHINA
Storage Temperature:	64° to 78°
Pallet Configuration:	Ti:15 Hi:7
Servings Per Container:	1

Features and Benefits (Case GTIN: 10038900030190)

Features:	DOLE Fruit Bowls in 100% Fruit Juice are a convenient and delicious snack that provides 1/2 cup fruit per USDA Meal Pattern Requirements.
Preparation and Cooking:	Ready to Eat - Ready to Eat
Serving Suggestions:	DOLE® Pears can be stirred into salads, fruit salads as well as served as a topping over desserts.
Storage:	Store at ambient temperatures



Features and Benefits (Consumer or Base GTIN: 00038900030193)

Features:	DOLE Fruit Bowls in 100% Fruit Juice are a convenient and delicious snack that provides 1/2 cup fruit per USDA Meal Pattern Requirements.
Preparation and Cooking:	Ready to Eat - Ready to Eat
Serving Suggestions:	DOLE® Pears can be stirred into salads, fruit salads as well as served as a topping over desserts.
Storage:	Store at ambient temperatures

Nutritionals and Ingredients (Case GTIN: 10038900030190)

Representation of label(s). The actual nutritional label(s) and ingredients may vary slightly

Nutrition Facts (Ready to Eat)	
1 Servings Per Container	
Serving Size	113 g
Amount Per Serving	
Calories	70
% Daily Value*	
Total Fat 0 g	0%
Saturated Fat 0 g	0%
Trans Fat 0 g	
Cholesterol 0 mg	0%
Sodium 0 mg	0%
Total Carbohydrate 18 g	7%
Dietary Fiber 3 g	11%
Sugar 14 g	
Added Sugar 0 g	0%
Protein 1 g	
Vitamin D 0 µg	0%
Potassium 0 mg	0%
Calcium 0 mg	0%
Iron 0 mg	0%
Vitamin C 27 mg	30%
* The % Daily Value (DV) tells you how much a nutrient in a serving of food contributes to a daily diet. 2,000 calories a day is used for general nutrition advice.	

Child Nutrition Label:

Not Applicable

Ingredients:

PEARS, WHITE GRAPE JUICE FROM CONCENTRATE (WATER, WHITE GRAPE JUICE CONCENTRATE), LEMON JUICE FROM CONCENTRATE (WATER, LEMON JUICE CONCENTRATE), NATURAL FLAVORS, ASCORBIC ACID (VITAMIN C) TO PROMOTE COLOR RETENTION, AND CITRIC ACID.

Nutritionals and Ingredients (Consumer or Base GTIN: 00038900030193)

Representation of label(s). The actual nutritional label(s) and ingredients may vary slightly

Nutrition Facts (Ready to Eat)	
1 Servings Per Container	
Serving Size	113 g
Amount Per Serving	
Calories	70
	% Daily Value*
Total Fat 0 g	0%
Saturated Fat 0 g	0%
Trans Fat 0 g	
Cholesterol 0 mg	0%
Sodium 0 mg	0%
Total Carbohydrate 18 g	7%
Dietary Fiber 3 g	11%
Sugar 14 g	
Added Sugar 0 g	0%
Protein 1 g	
Vitamin D 0 µg	0%
Potassium 0 mg	0%
Calcium 0 mg	0%
Iron 0 mg	0%
Vitamin C 27 mg	30%
* The % Daily Value (DV) tells you how much a nutrient in a serving of food contributes to a daily diet. 2,000 calories a day is used for general nutrition advice.	

Child Nutrition Label:

Not Applicable

Ingredients:

PEARS, WHITE GRAPE JUICE FROM CONCENTRATE (WATER, WHITE GRAPE JUICE CONCENTRATE), LEMON JUICE FROM CONCENTRATE (WATER, LEMON JUICE CONCENTRATE), NATURAL FLAVORS, ASCORBIC ACID (VITAMIN C) TO PROMOTE COLOR RETENTION, AND CITRIC ACID.

Allergens and Diet (Case GTIN: 10038900030190)

Representation of allergens and dietary claims. The actual allergens and dietary claims may vary slightly.

Allergen Values (US FDA)

Free From:

Peanuts, Tree Nuts, Eggs, Milk, Fish, Crustacean, Soy, Wheat, Sesame Seeds

Suitable For Diet

Kosher Yes

Allergens and Diet (Consumer or Base GTIN: 00038900030193)

Representation of allergens and dietary claims. The actual allergens and dietary claims may vary slightly.

Allergen Values (US FDA)

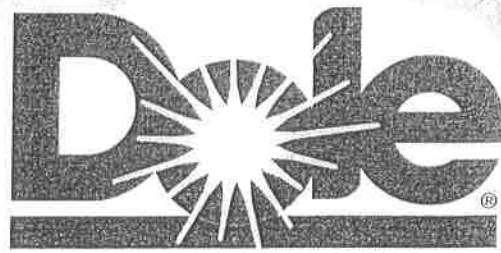
Free From:

Peanuts, Tree Nuts, Eggs, Milk, Fish, Crustacean, Soy, Wheat, Sesame Seeds

Suitable For Diet

Kosher Yes

30-61-116



100% PINEAPPLE JUICE

Endless Menu & Beverage Applications

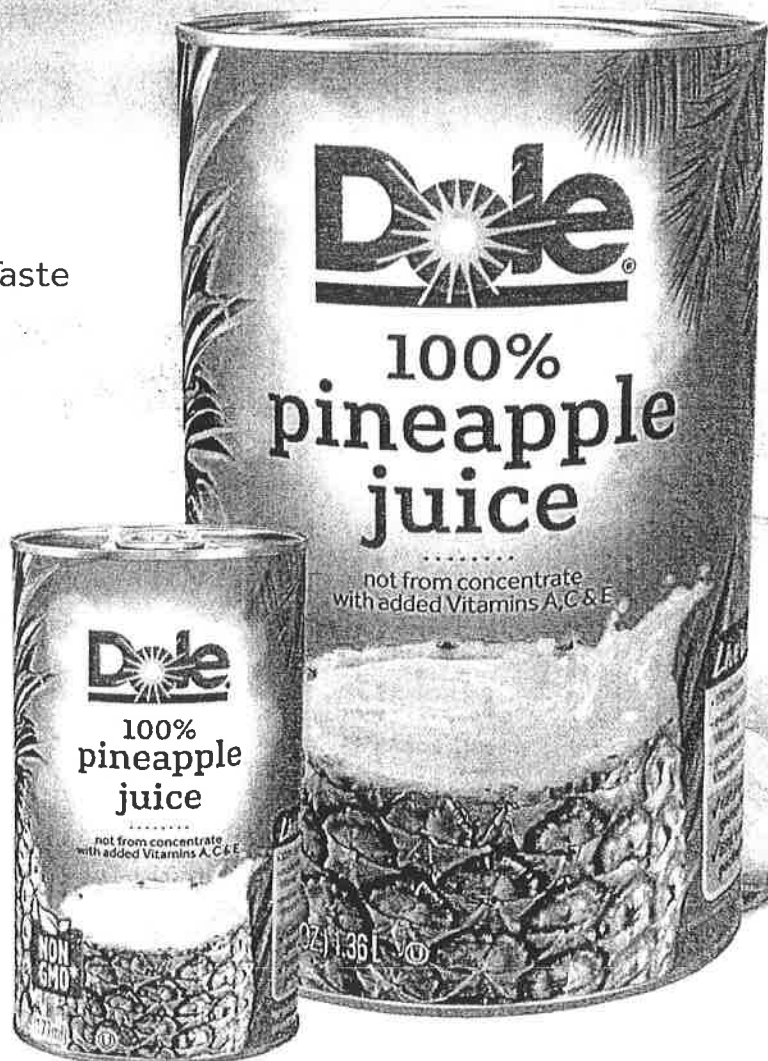
FEATURES & BENEFITS

- All Natural 100% Fruit Juice
- Shelf Stable
- Premium Quality; Consistent Taste
- Supreme Flavor Year-Round
- Convenient & Ready to Use
- Excellent Source of Vitamin C
- Good Source of Vitamin A & E



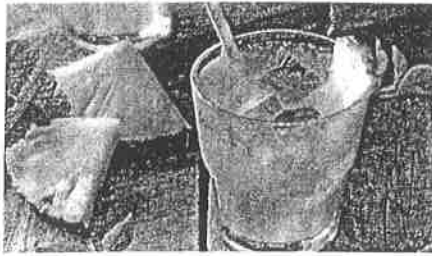
*no genetically modified (or enhanced) ingredients

If it doesn't say Dole, it isn't.
#askfordole



ADD A SPLASH OF PARADISE TO YOUR MENU!

KEEP YOUR MENU ON-TREND WITH 100% PINEAPPLE JUICE



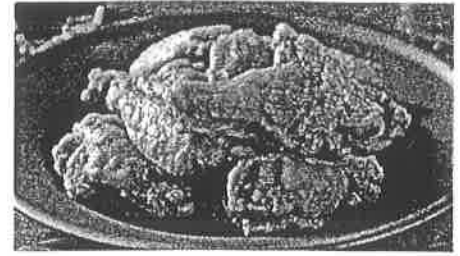
pineapple style

Sweet and savory beverages with REAL Pineapple Juice are popping up everywhere, so with pineapple being top of mind for customers, try incorporating more pineapple forward drinks, smoothies and cocktails into your menu.



healthier menus

Customers are seeking out menu items with healthy and natural ingredients. DOLE 100% Pineapple Juice is a natural sweetener and a great source of vitamins that will win over customers looking for healthier menu items in dressings and sides.



versatile ingredient

DOLE 100% Pineapple Juice is a perfect addition or substitution to a variety of dishes while improving nutritional value. It is an ideal tenderizer, marinade, salt alternative and natural sweetener straight from golden, juicy Dole pineapples.

For these and additional delicious recipe ideas go to: www.dolefoodservice.com/recipes



Dole
100%
PINEAPPLE JUICE
KING of JUICES
with a thousand uses

**REFRESHING, EXOTIC & PERFECT
IN YOUR FAVORITE RECIPES -**

USE IN SMOOTHIES, DRINKS, ENTRÉES,
MARINADES, DESSERTS AND MORE.

Of course, it is also great on its own.



Nutritional Information

DOLE® PINEAPPLE JUICE

Pineapple Juice - 48/6 fl. oz. Cans

Ingredients: Pineapple Juice, Ascorbic Acid (Vitamin C), Vitamin E, and Vitamin A.

Pineapple Juice- 12/46 fl. oz. Cans

Ingredients: Pineapple Juice, Ascorbic Acid (Vitamin C), Vitamin E, and Vitamin A.

Kosher Status	Serving Size (fl oz)	Calories	Total Fat (g)	Saturated Fat (g)	Trans Fat (g)	Sodium (mg)	Potassium (mg)	Carbs (g)	Fiber (g)	Sugars (g)	Protein (g)	Vitamin A % DV*	Vitamin C % DV*	Vitamin E % DV*	Calcium % DV*	Iron % DV*
U	6	100	0	0	0	0	240	24	0	22	<1	10	100	10	2	4
U	8	130	0	0	0	5	330	32	<1	30	<1	10	120	10	4	4

*Percent Daily Values are based on a 2,000 calorie diet.

Specifications

DOLE® PINEAPPLE JUICE

Pineapple Juice - 6 fl. oz. Cans

100-38900-00914-1

2/24/6oz

13.125 x 8.750 x 8.375"

18.0

25.0

.56

80

Pineapple Juice - 46 fl. oz. Cans

100-38900-00808-3

12/46oz

17.125 x 12.750 x 7.188"

34.5

44.6

.91

48

Visit www.dolefoodservice.com to learn more about these products and current offers, or call 800-723-9868 to contact a Dole Representative.



Scan me
with your smartphone to learn about
Dole Pineapple Juice



Our Fruit. Your Signature.™

Tropical Menu Infusions



Features & Benefits

- Year-round menu opportunities
- 100% sun-ripened fruit
- Premium quality; consistent taste
- Pre-cut and ready to use
- Shelf stable
- Variety of fruits, cuts and packing mediums
- No artificial colors
- No artificial flavors
- No high-fructose corn syrup
- 0g Trans Fat



Nutritional Information

DOLE PINEAPPLE JUICE (JUICE PACK)	Case Code	Serving Size 1/2 Cup	Calories	Total Fat	Sat. Fat	Trans Fat	Sodium	Potassium	Carbohydrate	Fiber	Sugars	Protein	Percentage of U.S. Daily Value Vitamin A Vitamin C Iron
Fancy Slices in Juice	100-38900-01139-7	11-1/2	60	0g	0g	0g	0mg	140mg	15g	1g	14g	<1g	30%
Fancy Chunks in Juice	100-38900-01140-2	12-1/2	60	0g	0g	0g	0mg	150mg	16g	1g	15g	<1g	30%
Fancy Slices in Juice	100-38900-01141-4	11-1/2	60	0g	0g	0g	0mg	140mg	15g	1g	14g	<1g	30%
Fancy Chunks in Juice	100-38900-01142-2	12-1/2	60	0g	0g	0g	0mg	150mg	16g	1g	15g	<1g	30%
Fancy Tidbits in Juice	100-38900-01143-5	12-1/2	60	0g	0g	0g	0mg	150mg	16g	1g	15g	<1g	30%
INGREDIENTS: Pineapple, Pineapple Juice, Concentrated Pineapple Juice from Concentrate (Water, Citric Acid, and Ascorbic Acid).													
Fancy Crushed in Juice	100-38900-01144-4	12-1/2	70	0g	0g	0g	0mg	135mg	18g	1g	15g	1g	20%
INGREDIENTS: Pineapple, Pineapple Juice, and Citric Acid.													
Choice Slices in Juice 66	100-38900-00255-5	12-1/2	60	0g	0g	0g	0mg	150mg	16g	1g	15g	<1g	30%
Choice Chunks in Juice	100-38900-00468-9	12-1/2	60	0g	0g	0g	0mg	150mg	16g	1g	15g	<1g	30%
Choice Tidbits in Juice	100-38900-00553-2	12-1/2	60	0g	0g	0g	0mg	150mg	16g	1g	15g	<1g	30%
INGREDIENTS: Pineapple, Pineapple Juice, Concentrated Pineapple Juice from Concentrate (Water, Citric Acid, and Ascorbic Acid).													
Fine Cut Crushed in Juice	100-38900-00715-4	12-1/2	70	0g	0g	0g	10mg	135mg	18g	1g	15g	1g	20%
Coarse Cut Crushed in Juice	100-38900-00765-9	12-1/2	70	0g	0g	0g	10mg	135mg	18g	1g	15g	1g	20%
INGREDIENTS: Pineapple and Pineapple Juice.													
Aspic Fine Cut Crushed in Juice	100-38900-80716-7	100g	61	0g	0g	0g	1mg	115mg	14g	1g	13g	<1g	60%
Aspic Coarse Cut Crushed in Juice	100-38900-80766-2	100g	61	0g	0g	0g	1mg	115mg	14g	1g	13g	<1g	60%
INGREDIENTS: Pineapple, Pineapple Juice, Citric Acid, and Ascorbic Acid.													

DOLE PINEAPPLE (STRIP PACK)

Fancy Slices in Heavy Syrup	100-38900-01102-1	11-1/2	100	0g	0g	0g	0mg	90mg	25g	1g	23g	<1g	25%
Fancy Chunks in Heavy Syrup	100-38900-01146-6	12-1/2	110	0g	0g	0g	0mg	95mg	26g	1g	25g	<1g	25%
Pineapple Pizza Tidbits in Light Syrup	100-38900-11602-3	110g	90	0g	0g	0g	0mg	120mg	26g	1g	25g	<1g	35%
Choice Slices in Heavy Syrup 66	100-38900-00257-7	11-1/2	100	0g	0g	0g	0mg	85mg	25g	1g	23g	<1g	25%
Thin Slices in Light Syrup 90	100-38900-00270-8	11-1/2	80	0g	0g	0g	0mg	90mg	20g	1g	19g	<1g	25%
Slices in Heavy Syrup 100/110	100-38900-00280-7	11-1/2	100	0g	0g	0g	0mg	85mg	25g	1g	23g	<1g	25%
Choice Chunks in Heavy Syrup	100-38900-00465-8	12-1/2	110	0g	0g	0g	0mg	95mg	26g	1g	25g	<1g	25%
Choice Tidbits in Light Syrup	100-38900-00592-1	12-1/2	90	0g	0g	0g	0mg	105mg	22g	1g	20g	<1g	30%
Choice Tidbits in Heavy Syrup	100-38900-00555-8	12-1/2	110	0g	0g	0g	0mg	105mg	22g	1g	20g	<1g	30%
Choice Cubes in Light Syrup	100-38900-00395-8	12-1/2	90	0g	0g	0g	0mg	105mg	21g	1g	20g	<1g	30%
INGREDIENTS: Pineapple, Water, Sugar, and Citric Acid.													
Fancy Cubes in Extra Heavy Syrup (32" B)	100-38900-00435-1	12-1/2	170	0g	0g	0g	0mg	100mg	41g	1g	39g	0g	30%
Fancy Coarse Cut Crushed in Extra Heavy Syrup (32" B)	100-38900-00625-6	12-1/2	160	0g	0g	0g	0mg	90mg	40g	1g	39g	<1g	25%
INGREDIENTS: Pineapple, Sugar, Water, and Citric Acid.													

DOLE TROPICAL FRUIT SALAD

In Light Syrup and Passion Fruit Juice	100-38900-00082-8	12-1/2	90	0g	0g	0g	0mg	210mg	22g	2g	21g	<1g	10%
INGREDIENTS: Pineapple, Water, Sugar, Citric Acid, and Ascorbic Acid. Syrup: Passion Fruit Juice from Concentrate (Water, Lemon Juice Concentrate, and Citric Acid).													
In Fruit Juices	100-38900-00060-6	12-1/2	70	0g	0g	0g	0mg	220mg	24g	2g	15g	<1g	8%
INGREDIENTS: Pineapple, Papaya (Red and Yellow), Pineapple Juice, Guava, White Grape Juice from Concentrate (Water, White Grape Juice Concentrate, and Citric Acid).													

DOLE MANDARIN ORANGES

Segments in Juice	100-38900-04222-3	12-1/2	90	0g	0g	0g	5mg	115mg	21g	1g	20g	<1g	8%
INGREDIENTS: Mandarin Oranges, White Grape Juice from Concentrate (Water, White Grape Juice Concentrate, and Citric Acid).													
Segments in Light Syrup	100-38900-04215-2	12-1/2	80	0g	0g	0g	0mg	115mg	21g	1g	20g	<1g	6%
Segments in Fruit Juices	100-38900-04218-4	12-1/2	80	0g	0g	0g	0mg	110mg	21g	1g	20g	<1g	6%
INGREDIENTS: Mandarin Oranges, Water, Sugar, and Citric Acid.													

DOLE POUCH PACK PRODUCTS

Tropical Gold® Pineapple Premium Cut	100-38900-01141-1	12-1/2	80	0g	0g	0g	0mg	140mg	19g	1g	15g	0g	50%
In Extra Light Syrup													
INGREDIENTS: Pineapple, Water, Sugar, Citric Acid, and Ascorbic Acid (To Promote Color Retention).													
Pineapple Tidbits in Light Syrup	100-38900-00567-9	12-1/2	90	0g	0g	0g	0mg	125mg	21g	2g	20g	<1g	50%
INGREDIENTS: Pineapple Tidbits, Water, Sugar, Citric Acid, and Ascorbic Acid (To Promote Color Retention).													
Tropical Fruit Salad in Fruit Juices	100-38900-00997-2	12-1/2	70	0g	0g	0g	0mg	200mg	17g	2g	15g	<1g	45%
INGREDIENTS: Pineapple, Papaya (Red and Yellow), Pineapple Juice, White Grape Juice from Concentrate (Water, White Grape Juice Concentrate, Guava, Ascorbic Acid (To Promote Color Retention), and Citric Acid).													



To learn more about recipes, see a product video overview and product offers, visit
www.dolefoodservice.com or call 1-800-723-9868.

Specifications

Pack Size	Total oz.	Drained Wt. (Fruit)	Case Dimensions Length x Width x Height	Case Weight (lbs.)	Case Cube (ft.)	Cases Per Pallet
12/8oz.	8	4.9oz.	13.750 x 10.375 x 2.125"	8	0.175	280
12/8oz.	8	4.9oz.	13.750 x 10.375 x 2.125"	8	0.175	280
12/20oz.	20	10 slices	13.750 x 10.250 x 4.625"	18	0.377	126
12/20oz.	20	12oz.	13.750 x 10.250 x 4.625"	18	0.377	126
12/20oz.	20	12oz.	13.750 x 10.250 x 4.625"	18	0.377	126
12/20oz.	20	12oz.	13.750 x 10.250 x 4.625"	18	0.377	126
12/8oz.	8	5oz.	13.750 x 10.375 x 2.125"	8	0.175	280
12/20oz.	20	12.6oz.	13.750 x 10.250 x 4.625"	18	0.377	126
6/410	107	66 slices	18.500 x 12.500 x 7.000"	46	0.937	48
6/410	106	4lb. 2oz.	18.500 x 12.500 x 7.000"	46	0.937	48
6/410	106	4lb. 4oz.	18.500 x 12.500 x 7.000"	46	0.937	48
6/410	107	5lb. 8oz.	18.500 x 12.500 x 7.000"	46	0.937	48
6/410	107	5lb. 8oz.	18.500 x 12.500 x 7.000"	46	0.937	48
50 lb.	—	—	13.000 x 19.000 x 7.000"	54	1.000	42
50 lb.	—	—	13.000 x 19.000 x 7.000"	54	1.000	42
12/20oz.	20	10 slices	13.750 x 10.250 x 4.625"	18	0.377	126
12/20oz.	20	12oz.	13.750 x 10.250 x 4.625"	18	0.377	126
12/20oz.	20	12.6oz.	13.750 x 10.250 x 4.625"	18	0.377	126
12/20oz.	29	1lb. 3oz.	16.000 x 12.190 x 4.750"	26.5	0.556	80
6/410	108	66 slices	18.500 x 12.500 x 7.000"	46	0.937	48
6/410	107	90 slices	18.500 x 12.500 x 7.000"	46	0.937	48
6/410	108	100-110 slices	18.500 x 12.500 x 7.000"	47	0.937	48
6/410	108	4lb. 2oz.	18.500 x 12.500 x 7.000"	46	0.937	48
6/410	106	4lb. 4oz.	18.500 x 12.500 x 7.000"	46	0.937	48
6/410	106	4lb. 7oz.	18.500 x 12.500 x 7.000"	48	0.937	48
6/410	106	4lb. 2oz.	18.500 x 12.500 x 7.000"	46	0.937	48
6/410	112	4lb. 2oz.	18.500 x 12.500 x 7.000"	48	0.937	48
6/410	112	5lb. 12oz.	18.500 x 12.500 x 7.000"	48	0.937	48
6/410	106	4lb. 1oz.	18.500 x 12.500 x 7.000"	46	0.940	48
6/410	106	4lb. 1oz.	18.500 x 12.500 x 7.000"	46	0.940	48
6/410	106	3lb. 12oz.	18.500 x 12.500 x 7.000"	45	0.937	48
6/410	15	8.4oz.	11.575 x 8.738 x 4.118"	14	0.241	144
6/410	106	3lb. 12oz.	18.500 x 12.500 x 7.000"	45	0.937	48
6/810z.	81	6 cups	18.385 x 13.250 x 7.716"	34.0	1.088	35
6/810z.	81	3lb. 9oz.	18.385 x 13.250 x 7.716"	34.0	1.088	35
6/810z.	81	6 cups	18.385 x 13.250 x 7.716"	34.0	1.088	35

*Percent Daily Values are based on a 2,000 calorie diet.



Scan me with your
 smartphone to learn about
DOLE Canned Pineapple Products.



(800) 890-0455 Toll Free
(336) 270-4082 Fax
admin@juicealive.net

CHERRY LIMEADE

100% Fruit Juice 5+1

NUTRITION FACTS

Serving Size 8 fl. oz reconstituted
Servings Per Container *Variable*

Amount Per Serving

Calories 120

Calories from Fat 0

	% Daily Value*
Total Fat 0g	0%
Saturated Fat 0g	0%
Trans Fat 0g	0%
Cholesterol 0mg	0%
Sodium 10mg	0%
Total Carbohydrates 30g	10%
Dietary Fiber 0g	0%
Sugars 29g	
Protein 0g	

Vitamin A 10%

Vitamin C 130%

Vitamin D 15%

*Percent Daily Value (DV) is based on 2,000 calorie diet. Your daily value may be higher or lower depending on your calorie needs.

INGREDIENTS

Clarified Demineralized Pineapple Juice, Water, Artificial Flavors, Citric Acid, Ascorbic Acid (Vitamin C), White Grape Juice Concentrate, Sodium Benzoate and Potassium Sorbate (as preservatives), Vitamin A Palmitate, Vitamin D3, FD&C Red No. 40.

Last Update Dec. 2012



Alliance
for a
**Healthier
Generation**



(800) 890-0455 Toll Free
(336) 270-4082 Fax
admin@juicealive.net

STRAWBERRY LEMONADE

100% Fruit Juice 5+1

NUTRITION FACTS

Serving Size 8 fl. oz reconstituted
Servings Per Container *Variable*

Amount Per Serving

Calories 120

Calories from Fat 0

	% Daily Value*
Total Fat 0g	0%
Saturated Fat 0g	0%
Trans Fat 0g	0%
Cholesterol 0mg	0%
Sodium 10mg	0%
Total Carbohydrates 30g	10%
Dietary Fiber 0g	0%
Sugars 29g	
Protein 0g	

Vitamin A 10%

Vitamin C 130%

Vitamin D 15%

*Percent Daily Value (DV) is based on 2,000 calorie diet. Your daily value may be higher or lower depending on your calorie needs.

INGREDIENTS

Clarified Demineralized Pineapple Juice, Water, Citric Acid, Natural & Artificial Flavors, Propylene Glycol, Gum Arabic Ascorbic Acid (Vitamin C), Sodium Benzoate and Potassium Sorbate (as preservatives), Vitamin A Palmitate, White Grape Juice Concentrate, Vitamin D3, FD&C Red No. 40.

Last Update Dec. 2012



Alliance
for a
**Healthier
Generation**



(800) 890-0455 Toll Free
(336) 270-4082 Fax
admin@juicealive.net

BLUE RASPBERRY 1001

100% Fruit Juice 5+1

NUTRITION FACTS

Serving Size 8 fl. oz reconstituted
Servings Per Container *Variable*

Amount Per Serving

Calories 120

Calories from Fat 0

% Daily Value*

Total Fat 0g	0%
Saturated Fat 0g	0%
Trans Fat 0g	0%
Cholesterol 0mg	0%
Sodium 10mg	0%
Total Carbohydrates 29g	10%
Dietary Fiber 0g	0%
Sugars 28g	

Protein 0g

Vitamin A 10%

Vitamin C 130%

Vitamin D 15%

*Percent Daily Value (DV) is based on 2,000 calorie diet. Your daily value may be higher or lower depending on your calorie needs.

INGREDIENTS

Clarified Demineralized Pineapple Juice, Water, Citric Acid, Natural & Artificial Flavors, Propylene Glycol, Gum Arabic, Ascorbic Acid (Vitamin C), Sodium Benzoate and Potassium Sorbate (as preservatives), White Grape Juice Concentrate, Vitamin A Palmitate, Vitamin D3, FD&C Blue No. 1.

Last Update Dec. 2012



Alliance
for a
**Healthier
Generation**



(800) 890-0455 Toll Free
(336) 270-4082 Fax
admin@juicealive.net

FRUIT PUNCH

100% Fruit Juice 5+1

NUTRITION FACTS

Serving Size 8 fl. oz reconstituted
Servings Per Container *Variable*

Amount Per Serving

Calories 110

Calories from Fat 0

% Daily Value*

Total Fat 0g	0%
Saturated Fat 0g	0%
Trans Fat 0g	0%
Cholesterol 0mg	0%
Sodium 10mg	0%
Total Carbohydrates 28g	9%
Dietary Fiber 0g	0%
Sugars 28g	
Protein 0g	

Vitamin A 10%

Vitamin C 120%

Vitamin D 15%

*Percent Daily Value (DV) is based on 2,000 calorie diet. Your daily value may be higher or lower depending on your calorie needs.

INGREDIENTS

Clarified Demineralized Pineapple Juice, Water, Natural & Artificial Flavors, Propylene Glycol, Glyceryl Abietate, Brominated Soybean Oil, Citric Acid, Ascorbic Acid (Vitamin C), Sodium Benzoate and Potassium Sorbate (as preservatives), White Grape Juice Concentrate, Vitamin A Palmitate, Vitamin D3.

Last Update Dec. 2012



Alliance
for a
**Healthier
Generation**



4005 Strawberry
5+1 100% Juice Concentrate with Added Ingredients

GTIN (Case)	10854484005238
UPC (Each)	854484005231
Manufacturer Item #	4005
Pack Size	6/64 oz
Shelf Life	16 Months
Unit Weight	36 lb
Depth	15 inches
Height	10.5 inches
Width	10.5 inches
Case Cube (ft)	0.891
Ti/Hi	12/5
Storage	Dry
Allergens	None
Mix Ratio	5 Parts Water : 1 Part Concentrate
Ingredients	Clarified Demineralized Pineapple Juice Concentrate, Water, Citric Acid, Natural Flavor, Gum Arabic, Ascorbic Acid (Vitamin C), Sodium Benzoate and Potassium Sorbate (as preservatives), Grape Juice Concentrate, Vitamin A Palmitate, Vitamin D3, Natural Red Colorant.

NUTRITION FACTS

Serving Size 8 fl. oz reconstituted

Servings Per Container Variable

Amount Per Serving

Calories 120	Calories from Fat 0
	% Daily Value*

Total Fat 0g	0%
Saturated Fat 0g	0%
Trans Fat 0g	0%
Cholesterol 0mg	0%
Sodium 10mg	0%
Total Carbohydrates 29g	10%
Dietary Fiber 0g	0%
Sugars 29g	

Protein 0g
Vitamin A 10%
Vitamin C 120%
Vitamin D 15%

Trident Marketing, Inc.
Trident Beverage, Inc.
(800) 890-0455
admin@juicealive.net

Last Updated September 2015



STRAWBERRY KIWI 1002

100% Fruit Juice 5+1

NUTRITION FACTS

Serving Size 8 fl. oz reconstituted
Servings Per Container *Variable*

Amount Per Serving

Calories 120

Calories from Fat 0

	% Daily Value*
Total Fat 0g	0%
Saturated Fat 0g	0%
Trans Fat 0g	0%
Cholesterol 0mg	0%
Sodium 10mg	0%
Total Carbohydrates 29g	10%
Dietary Fiber 0g	0%
Sugars 28g	
Protein 0g	

Vitamin A 10%

Vitamin C 130%

Vitamin D 15%

*Percent Daily Value (DV) is based on 2,000 calorie diet. Your daily value may be higher or lower depending on your calorie needs.

INGREDIENTS

Clarified Demineralized Pineapple Juice, Water, Citric Acid, Natural & Artificial Flavors, Propylene Glycol, Ascorbic Acid (Vitamin C), Sodium Benzoate and Potassium Sorbate (as preservatives), White Grape Juice Concentrate, Vitamin A Palmitate, Vitamin D3, FD&C Red No. 40.

Last Update Dec. 2012



Alliance
for a
**Healthier
Generation**



(800) 890-0455 Toll Free
(336) 270-4082 Fax
admin@juicealive.net

COCO FREEZE

100% Fruit Juice 5+1

NUTRITION FACTS

Serving Size 8 fl. oz reconstituted
Servings Per Container *Variable*

Amount Per Serving

Calories 120

Calories from Fat 0

% Daily Value*

Total Fat 0g	0%
Saturated Fat 0g	0%
Trans Fat 0g	0%
Cholesterol 0mg	0%
Sodium 10mg	0%
Total Carbohydrates 29g	10%
Dietary Fiber 0g	0%
Sugars 28g	
Protein 0g	

Vitamin A 10%

Vitamin C 120%

Vitamin D 15%

*Percent Daily Value (DV) is based on 2,000 calorie diet. Your daily value may be higher or lower depending on your calorie needs.

INGREDIENTS

Clarified Demineralized Pineapple Juice, Water, Natural & Artificial Flavors, Propylene Glycol, Glycerine, Titanium Dioxide, Gum Arabic, Xanthan Gum, Citric Acid Ascorbic Acid (Vitamin C), Sodium Benzoate and Potassium Sorbate (as preservatives), White Grape Juice Concentrate, Vitamin A Palmitate, Vitamin D3.

Last Update Dec. 2012



Alliance
for a
**Healthier
Generation**



(800) 890-0455 Toll Free
(336) 270-4082 Fax
admin@juicealive.net

GREEN WATERMELON

100% Fruit Juice 5+1

NUTRITION FACTS

Serving Size 8 fl. oz reconstituted
Servings Per Container *Variable*

Amount Per Serving

Calories 110 Calories from Fat 0

	% Daily Value*
Total Fat 0g	0%
Saturated Fat 0g	0%
Trans Fat 0g	0%
Cholesterol 0mg	0%
Sodium 10mg	0%
Total Carbohydrates 29g	10%
Dietary Fiber 0g	0%
Sugars 28g	
Protein 0g	

Vitamin A 10%

Vitamin C 120%

Vitamin D 15%

*Percent Daily Value (DV) is based on 2,000 calorie diet. Your daily value may be higher or lower depending on your calorie needs.

INGREDIENTS

Clarified Demineralized Pineapple Juice, Water, Citric Acid, Natural & Artificial Flavors, Propylene Glycol, Gum Arabic, Ascorbic Acid (Vitamin C), Sodium Benzoate and Potassium Sorbate (as preservatives), White Grape Juice Concentrate, Vitamin A Palmitate, Vitamin D3, FD&C Yellow No. 5 & FD&C Blue No. 1.

Last Update Dec. 2012



Alliance
for a
**Healthier
Generation**



Totally
Juice™

PRODUCT SPEC SHEET

Fruit Punch 100% Juice

Pack Size: 40/6.75 oz. aseptic box w/straw
Product Code: 410805



GF Gluten Free **Star-K** Star-K Kosher **Recyclable** Recyclable*

Preparation Instructions: For best flavor, chill before serving. Shake well.

Allergens: None

Code Date: "Best By" date

CN Credit: ¾ cup fruit

Totally Juice™ 100% Juice is All Natural with no added sugar, preservatives, or dyes.

Nutrition Facts

1 serving per container

Serving size 6.75 fl. oz. (200 mL)

Amount per serving

Calories 100

% Daily Value*

Total Fat 0g **0%**

Saturated Fat 0g **0%**

Trans Fat 0g

Cholesterol 0mg **0%**

Sodium 10mg **0%**

Total Carbohydrate 25g **8%**

Dietary Fiber 0g **0%**

Total Sugars 23g

Includes 0g Added Sugars **0%**

Protein 0g

Vitamin D 0mcg **0%**

Calcium 28mg **3%**

Iron 0mg **0%**

Potassium 250mg **7%**

* The % Daily Value (DV) tells you how much a nutrient in a serving of food contributes to a daily diet. 2,000 calories a day is used for general nutrition advice.

Ingredients:

100% Fruit Juice (Water sufficient to reconstitute Apple, Pear, Orange and Pineapple Juice Concentrates), Natural Flavors, and Citric Acid. Made in the USA. Contains concentrate from USA, Argentina, Brazil, China, Chile, Costa Rica, Mexico, Poland, Spain and/or New Zealand.

Buy American Certification:

Suncup™ 100% Juice is produced in our facilities located in the USA and may contain domestic and/or imported juice concentrates, as a portion of the ingredients, based on availability and cost. No Suncup 100% juice products are imported and produced outside of the USA.

Suncup™ Juice meets the "Limited Exceptions" clause as identified in USDA Memos SP14-2012, SP 24-2016 and SP 38- 2017.

Updated: 01/01/2020

Submitted by:

Rudina Ismalaj

Rudina Ismalaj
Senior Quality & Compliance Coordinator

Shipping Specifications

GTIN	00774844108054
Gross Weight	20.1 lbs.
Cube	.37
Dimensions (L x W x H)	16 x 8 x 5
Tie x High	12 x 8
Shelf Life	12 months

PA/AZ

*Where recycling of cartons exists.
For more info <https://www.recyclecartons.com/>



Gregory Packaging, Inc.
1125 Easton Road • Bethlehem, PA 18015
www.suncupjuice.com

Totally
Juice.

Farm &
Orchard.



Corporate Office
1125 Easton Road
Bethlehem, PA 18015

Post Office Box T
Hellertown, PA 18055-0207

973-465-1113

www.suncupjuice.com



*Totally
Juice.*

*Farm &
Orchard.*

January 1, 2020

Buy American Statement

Section 104(d) of the William F. Goodling Child Nutrition Reauthorization Act of 1998 requires schools and institutions participating in the NSLP and SBP in the contiguous United States to purchase to the maximum extent practicable, domestic commodities or products for use in meals served under the program. The legislation defines "domestic commodity or product" as one that is produced in the United States and is processed in the United States, substantially using agricultural commodities that are produced in the United States.

There are limited exceptions to the Buy American provision which allow for the purchase of foods not meeting the "domestic" standard, in circumstances when use of domestic products is truly not practicable. These exceptions, as determined by the School Food Authority (SFA), are:

1. "The product is not produced or manufactured in the U.S. in sufficient and reasonable available quantities of a satisfactory quality."
2. "Competitive bids reveal the costs of a U.S. product are significantly higher than the non-domestic product."

Suncup™ Juice products are produced and packaged in our own family-owned facilities located in Newark, NJ; Bethlehem, PA; Newnan, GA; and Phoenix, AZ and may contain non-domestic fruit juice concentrates as an ingredient in the finished 100% juice product.

There is limited, or no domestic fruit juice concentrate available to supply the needs of school nutrition and meet the 51% domestic content requirement. Therefore, Suncup™ 100% fruit juice products may contain non-domestic juice concentrates, as a portion of the ingredients.

Cost of domestic orange juice concentrates average 20 - 100% more than non-domestic. Domestic grape and apple juice concentrates average 20% or more and domestic pineapple juice concentrate is not available. Any supply of domestic concentrate is VERY limited and seasonal.

Suncup™ Juice products will meet the "Limited Exceptions" clause as identified in SP14-2012, "Procurement Questions Relevant to the Buy American Provision", and as clarified in USDA Memos SP 24-2016 and SP 38-2017 "Compliance with and Enforcement of the Buy American Provision in the National School Lunch Program":

Per SP 38-2017, SFA's using one of the above exceptions will not need to request a waiver in order to purchase a non-domestic product. SFA's must, however, keep this documentation justifying the exception(s).

Products included under this are referenced on the attached product list.

Chinenye Oyarebu

Chinenye Oyarebu
Quality and Compliance Coordinator



BUY AMERICAN PRODUCT LIST

Following products qualify for exemptions from Buy American due to price and availability

FROZEN 3+1 CONCENTRATE

Greg Pack™ 12/32oz Cartons

020100 Orange Juice Concentrate

020300 Apple Juice Concentrate



REFRIGERATED, DATE-CODED JUICE AND DRINKS

Suncup™ 72/4oz Plastic Cups

090103 100% Orange Juice

090303 100% Apple Juice

090503 100% Grape Juice

090803 100% Natural Fruit Punch

Suncup™ 48/6oz Plastic Cups

040103 100% Orange Juice

040303 100% Apple Juice



FROZEN JUICE AND DRINKS

Suncup™ 72/4oz Plastic Cups

090100 100% Orange Juice

090110 Orange Blend 100% Juice

090301 100% Apple Juice

090501 100% Grape Juice

090800 100% Natural Fruit Punch

091000 100% Pineapple Juice

091200 100% Orange Pineapple Juice

091300 100% Tomato Juice

091601 100% Apple Cranberry Juice

092000 100% Apple Cherry Juice

Suncup™ 48/6oz Plastic Cups

040100 100% Orange Juice

040301 100% Apple Juice

040501 100% Grape Juice Cup

I 040800 100% Natural Fruit Punch

041200 100% Orange Pineapple Juice

Suncup™ 70/4oz Cartons

030100 100% Orange Juice

030105 100% Orange Juice w/Calcium

030110 Orange Blend 100% Juice

030301 100% Apple Juice

030305 100% Apple Juice w/Calcium

030501 100% Grape Juice

030505 100% Grape Juice w/Calcium

030800 100% Fruit Punch

030805 100% Fruit Punch w/Calcium

031000 100% Pineapple Juice

031200 100% Orange Pineapple Juice

031400 100% Apple Grape Juice

031600 100% Apple Cranberry Juice

032000 100% Apple Cherry Juice

Suncup™ 70/6oz Cartons

050100 100% Orange Juice

050301 100% Apple Juice

050501 100% Grape Juice

050800 100% Natural Fruit Punch

051200 100% Orange Pineapple Juice

052000 100% Apple Cherry Juice

Suncup™ 35/8oz Cartons

080135 100% Orange Juice

080335 100% Apple Juice

080835 100% Natural Fruit Punch

SHELF-STABLE JUICE BOXES

Suncup™ Totally Juice™ 40/4.23 oz. Box w/straw

400305 100% Apple Juice

400505 Grape 100% Juice

400805 Fruit Punch 100% Juice

402300 Cranberry Raspberry 100% Juice

402405 Orange Tangerine 100% Juice

402505 Very Berry 100% Juice

402600 Strawberry Kiwi 100% Juice

Suncup™ Totally Juice™ 40/6.75 oz. Box w/straw

410305 100% Apple Juice

410505 Grape 100% Juice

410805 Fruit Punch 100% Juice

412405 Orange Tangerine 100% Juice

412505 Very Berry 100% Juice



Following qualify based on 51% Domestic agricultural content

Suncup™ Farm & Orchard™ 40/4.23 oz. Box w/straw

402800 Paradise Punch 100% Vegetable & Fruit Juice

Suncup™ Farm & Orchard™ 40/6.75 oz. Box w/straw

412800 Paradise Punch 100% Vegetable & Fruit Juice



Following qualify based on 100% Domestic agricultural content

Suncup™ Farm & Orchard™ 40/4.23 oz. Box w/straw

402700 Sun Splash 100% Vegetable Juice



SHOP NOW

BLACKBERRY

Nutrition Facts

1 serving per container

Serving Size 8.4 fl oz (248 mL)

Amount Per Serving

Calories 90

% Daily Value*

Total Fat 0g 0%

Sodium 20mg 1%

Total Carbohydrate 22g 8%

Total Sugars 20g

Includes 0g Added Sugars 0%

Protein 0g

Vitamin C 18mg 20%

Niacin 2mg 10%

Vitamin B6 0.2mg 10%

Not a significant source of saturated fat, trans fat, cholesterol, dietary fiber, vitamin D, calcium, iron, and potassium.

*The % Daily Value (DV) tells you how much a nutrient in a serving of food contributes to a daily diet. 2,000 calories a day is used for general nutrition advice.

SPARKLING WATER, APPLE JUICE
CONCENTRATE, GRAPE JUICE
CONCENTRATE, NATURAL FLAVOR,
BLACKBERRY JUICE CONCENTRATE,
RASPBERRY JUICE CONCENTRATE, CITRIC
ACID, ACEROLA JUICE CONCENTRATE,
ASCORBIC ACID (VITAMIN C),
NIACINAMIDE, PYRIDOXINE
HYDROCHLORIDE (VITAMIN B6)

CITRIC ACID IS ADDED FOR
TASTE/TARTNESS AND IS NOT ADDED FOR
PURPOSES OF PRESERVING THE
BEVERAGE.

00836093011025

Last updated on May 02, 2022.

ALL OF THE GOOD



SHOP NOW

PEACH

Nutrition Facts	
1 serving per container	
Serving Size	8.4 fl oz (248 mL)
Amount Per Serving	
Calories	90
% Daily Value*	
Total Fat 0g	0%
Sodium 15mg	1%
Total Carbohydrate 22g	8%
Total Sugars 21g	
Includes 0g Added Sugars	
0%	
Protein 0g	
Not a significant source of saturated fat, trans fat, cholesterol, dietary fiber, vitamin D, calcium, iron, and potassium.	
*%DV = % Daily Value	

SPARKLING WATER, APPLE JUICE
CONCENTRATE, GRAPE JUICE
CONCENTRATE, CLARIFIED PEACH JUICE
CONCENTRATE, NATURAL FLAVOR, CITRIC
ACID, GUM ARABIC, BETA CAROTENE
(COLOR), RED RADISH JUICE
CONCENTRATE

CITRIC ACID IS ADDED FOR
TASTE/TARTNESS AND IS NOT ADDED FOR
PURPOSES OF PRESERVING THE
BEVERAGE.

00836093010523

Last updated on May 02, 2022.

Light, luscious, and

et summer sun in



ALL OF THE GOOD



SHOP NOW

CHERRY LIME

Nutrition Facts	
1 serving per container	
Serving Size	8.4 fl oz (248 mL)
Amount Per Serving	
Calories	90
% Daily Value*	
Total Fat 0g	0%
Sodium 10mg	0%
Total Carbohydrate 23g	8%
Total Sugars 20g	
Includes 0g Added Sugars	
Protein 0g	
Not a significant source of saturated fat, trans fat, cholesterol, dietary fiber, vitamin D, calcium, iron, and potassium.	
*%DV = % Daily Value	

SPARKLING WATER, APPLE JUICE
CONCENTRATE, GRAPE JUICE
CONCENTRATE, NATURAL FLAVOR,
CLARIFIED KEY LIME JUICE
CONCENTRATE, CLARIFIED LEMON JUICE
CONCENTRATE, SOUR CHERRY JUICE
CONCENTRATE, PURPLE CARROT JUICE
CONCENTRATE

00836093010851

Last updated on May 02, 2022.

We're so glad these
tart p

neir sweet-meets-
ing.



ALL OF THE GOOD



SHOP NOW

1-855-4IZZE
46086279

CLEMENTINE

Nutrition Facts

1 serving per container
Serving Size 8.4 fl oz (248 mL)

Amount Per Serving
Calories 90

% Daily Value*

Total Fat 0g	0%
Sodium 15mg	1%
Total Carbohydrate 21g	8%
Total Sugars 19g	
Includes 0g Added Sugars	0%
Protein 0g	
Vitamin C 18mg	20%
Niacin 2mg	10%
Vitamin B6 0.2mg	10%

Not a significant source of saturated fat, trans fat, cholesterol, dietary fiber, vitamin D, calcium, iron, and potassium.

*The % Daily Value (DV) tells you how much a nutrient in a serving of food contributes to a daily diet. 2,000 calories a day is used for general nutrition advice.

It's time to turn up the

zz. Buckle up for a

SPARKLING WATER, APPLE JUICE
CONCENTRATE, GRAPE JUICE
CONCENTRATE, CLARIFIED ORANGE JUICE
CONCENTRATE, CITRIC ACID, NATURAL
FLAVOR, CLARIFIED CLEMENTINE JUICE
CONCENTRATE, GUM ARABIC, ACEROLA
JUICE CONCENTRATE, BETA CAROTENE
(COLOR), ASCORBIC ACID (VITAMIN C),
NIACINAMIDE, PYRIDOXINE
HYDROCHLORIDE (VITAMIN B6)

CITRIC ACID IS ADDED FOR
TASTE/TARTNESS AND IS NOT ADDED FOR
PURPOSES OF PRESERVING THE
BEVERAGE.

00836093011056

Last updated on May 02, 2022.

ALL OF THE GOOD



SHOP NOW

POMEGRANATE

Nutrition Facts

1 serving per container

Serving Size 8.4 fl oz (248 mL)

Amount Per Serving

Calories 90

% Daily Value*

Total Fat 0g 0%

Sodium 10mg 0%

Total Carbohydrate 22g 8%

Total Sugars 18g

Includes 0g Added Sugars 0%

Protein 0g

Vitamin C 18mg 20%

Niacin 2mg 10%

Vitamin B6 0.2mg 10%

Not a significant source of saturated fat, trans fat, cholesterol, dietary fiber, vitamin D, calcium, iron, and potassium.

*The % Daily Value (DV) tells you how much a nutrient in a serving of food contributes to a daily diet. 2,000 calories a day is used for general nutrition advice.

SPARKLING WATER, APPLE JUICE
CONCENTRATE, GRAPE JUICE
CONCENTRATE, CLARIFIED PINEAPPLE
JUICE CONCENTRATE, CRANBERRY
JUICE CONCENTRATE, POMEGRANATE
JUICE CONCENTRATE, NATURAL
FLAVORS, CITRIC ACID, CARROT JUICE
CONCENTRATE, ACEROLA JUICE
CONCENTRATE, ASCORBIC ACID
(VITAMIN C), BLUEBERRY JUICE
CONCENTRATE, NIACINAMIDE,
PYRIDOXINE HYDROCHLORIDE
(VITAMIN B6)

CITRIC ACID IS ADDED FOR
TASTE/TARTNESS AND IS NOT ADDED
FOR PURPOSES OF PRESERVING THE
BEVERAGE.

00836093011087

Last updated on May 02, 2022.

ALL OF THE GOOD



PRODUCT SPEC SHEET

Paradise Punch 100% Vegetable & Fruit Juice

Pack Size: 40/4.23 oz. aseptic box w/straw
Product Code: 402800

51% Domestic Agricultural Content

GF Gluten Free **Recyclable***

Preparation Instructions: For best flavor, chill before serving. Shake well.

Allergens: None

Code Date: "Best By" date

CN Credit: ½ cup "other/additional" vegetable



Farm & Orchard™ 100% Juice is All Natural with no added sugar, preservatives, or dyes.

Nutrition Facts

1 serving per container

Serving size 4.23 fl. oz. (125 mL)

Amount per serving

Calories 60

% Daily Value*

Total Fat 0g **0%**

Saturated Fat 0g **0%**

Trans Fat 0g

Cholesterol 0mg **0%**

Sodium 5mg **0%**

Total Carbohydrate 14g **3%**

Dietary Fiber 0g **0%**

Total Sugars 13g

Includes 0g Added Sugars **0%**

Protein 0g

Vitamin D 0mcg **0%**

Calcium 0mg **0%**

Iron 0mg **0%**

Potassium 0mg **0%**

Vitamin C 90mg **100%**

* The % Daily Value (DV) tells you how much a nutrient in a serving of food contributes to a daily diet. 2,000 calories a day is used for general nutrition advice.

Ingredients:

100% Vegetable & Fruit Juice (Water sufficient to reconstitute Sweet Potato, Apple and/or Pear, and Carrot Juice Concentrates, Less than 2% of Celery, Beet, Parsley, Lettuce, Spinach, and Watercress Juice Concentrates, Natural Flavors, Ascorbic Acid (Vitamin C), and Citric Acid.
Made in the USA. Contains concentrate from USA, Argentina, Brazil, China, Chile, and/or New Zealand.

Buy American Certification:

Suncup™ 100% Juice is produced in our facilities located in the USA and may contain domestic and/or imported juice concentrates, as a portion of the ingredients, based on availability and cost. No Suncup 100% juice products are imported and produced outside of the USA.

Contains 51% domestic agricultural content or greater and meets the USDA Buy American regulations.

Updated: 04/01/2020

Submitted by:

Chinenye Oyarebu

Chinenye Oyarebu
Quality & Compliance Coordinator

Shipping Specifications

GTIN	00774844028000
Gross Weight	12.8 lbs.
Cube	.26
Dimensions (L x W x H)	14 x 8 x 4
Tie x High	14 x 10
Shelf Life	12 months

PA/AZ

*Where recycling of cartons exists
For more info <https://www.recyclecartons.com/>



Gregory Packaging, Inc.
1125 Easton Road • Bethlehem, PA 18015
www.suncupjuice.com

Totally Juice.

Farm & Orchard.

Gregory Packaging, Inc.

365 South Street, Suite 103 • Morristown, New Jersey 07960
973-465-1113
www.suncupjuice.com

Product Formulation Statement (PFS) for Documenting Vegetables and Fruits

School Food Authorities (SFAs) should include a copy of the label from the purchased product package in addition to the following information on letterhead signed by an official company representative. Specific vegetable subgroups must be offered weekly and fruit must be served daily for the National School Lunch Program. For more detailed information on meal pattern requirements see the Nutrition Standards for School Meals.

Product Name: Farm & Orchard Paradise Punch 100% Vegetable & Fruit Juice

Code: 402800

Manufacturer: Gregory Packaging, Inc.

Serving Size: 4.23 fl. oz.

6. Vegetable Component

Please fill out the chart below to determine the creditable amount of vegetables.

Description of Creditable Ingredient per Food Buying Guide (FBG)	Vegetable Subgroup	Ounces per Raw Portion of Creditable Ingredient	Multiply	FBG Yield/ Purchase Unit	Creditable Amount ¹ (quarter cups)
100% Vegetable & Fruit Juice Blend	Other/Additional	4.23 fl. oz.	x	4.23 fl. oz.	2

Total Creditable Vegetable Amount:

<ul style="list-style-type: none">• FBG calculations for vegetables are in quarter cups. See chart on following page for quarter cup to cup conversions.• Vegetables and vegetable purees credit on volume served. Tomato paste and puree will continue to credit as a calculated volume based on the yields in the FBG.• At least 1/4 cup of recognizable vegetable is required to contribute towards the vegetable component or a specific vegetable subgroup.• The other vegetable subgroup may be met with any additional amounts from the dark green, red/orange, and beans/peas (legumes) vegetable subgroups.• School food authorities may offer any vegetable subgroup to meet the total weekly requirement for the additional vegetable subgroup.• Please note that raw leafy green vegetables credit as half the volume served in school meals (For example: 1 cup raw spinach credits as 1/2 cup dark green vegetable. Legumes may credit towards the vegetable component or the meat alternate component, but not as both in the same meal. The school menu planner will decide how to incorporate legumes into the school meal. However, a manufacturer should provide documentation to show how legumes contribute towards the vegetable component and the meat alternate component. See chart on the following page for conversion factors• The PFS for meat/meat alternate may be used to document how legumes contribute towards the meat alternate component.	Total Cups Beans/Peas (Legumes)	
	Total Cups Dark Green	
	Total Cups Red/Orange	
	Total Cups Starchy	
	Total Cups Other	.50

I certify the above information is true and correct and that 4.23 fl. oz. ounce serving of the above product contains 1/2 cup(s) of other/ additional vegetables.

Gregory Goulet

Signature

Vice President - Sales

Title

Greg Goulet

Printed Name

1/1/2020

Date

973-465-1113

Phone Number



Plant Locations
Newark, NJ • Ewing,
Phoenix, AZ • Newnan

*Totally
Juice.*

*Farm &
Orchard.*



Farm &
Orchard™

PRODUCT SPEC SHEET

Sun Splash 100% Vegetable Juice

Pack Size: 40/4.23 oz. aseptic box w/straw
Product Code: 402700



100% Domestic Agricultural Content

GF Gluten Free **♻️** Recyclable*

Preparation Instructions: For best flavor, chill before serving. Shake well.

Allergens: None

Code Date: "Best By" date

CN Credit: ½ cup "red/orange" vegetable

Farm & Orchard™ 100% Juice is All Natural with no added sugar, preservatives, or dyes.

Nutrition Facts

1 serving per container

Serving size 4.23 fl. oz. (125 mL)

Amount per serving

Calories 60

% Daily Value*

Total Fat 0g	0%
Saturated Fat 0g	0%
Trans Fat 0g	
Cholesterol 0mg	0%
Sodium 10mg	0%
Total Carbohydrate 15g	5%
Dietary Fiber 0g	0%
Total Sugars 13g	
Includes 0g Added Sugars	0%
Protein 0g	
Vitamin D 0mcg	0%
Calcium 10mg	1%
Iron 0mg	0%
Potassium 130mg	3%

* The % Daily Value (DV) tells you how much a nutrient in a serving of food contributes to a daily diet. 2,000 calories a day is used for general nutrition advice.

Ingredients:

100% Vegetable Juice (Water sufficient to reconstitute Sweet Potato, Carrot, Pumpkin, Butternut Squash, Tomato Juice Concentrates), Natural Flavors and Citric Acid.

Made in the USA.

Buy American Certification:

Suncup™ 100% Juice is produced in our facilities located in the USA and may contain domestic and/or imported juice concentrates, as a portion of the ingredients, based on availability and cost. No Suncup 100% juice products are imported and produced outside of the USA.

Contains 100% domestic agricultural content and meets the USDA Buy American regulations.

Updated: 01/01/2020

Submitted by:

Rudina Ismalaj

Rudina Ismalaj
Senior Quality & Compliance Coordinator

Shipping Specifications

GTIN	00774844027003
Gross Weight	12.8 lbs.
Cube	.26
Dimensions (L x W x H)	14 x 8 x 4
Tie x High	14 x 10
Shelf Life	6 months

PA/AZ

*Where recycling of cartons exists.
For more info <https://www.recyclecartons.com/>



Gregory Packaging, Inc.
1125 Easton Road • Bethlehem, PA 18015
www.suncupjuice.com

*Totally
Juice.*

*Farm &
Orchard.*

Gregory Packaging, Inc.

365 South Street, Suite 103 • Morristown, New Jersey 07960
973-465-1113
www.suncupjuice.com

Product Formulation Statement (PFS) for Documenting Vegetables and Fruits

School Food Authorities (SFAs) should include a copy of the label from the purchased product package in addition to the following information on letterhead signed by an official company representative. Specific vegetable subgroups must be offered weekly and fruit must be served daily for the National School Lunch Program. For more detailed information on meal pattern requirements see the Nutrition Standards for School Meals.

Product Name: Sunsplash 100% Vegetable Juice

Code: 402700

Manufacturer: Gregory Packaging, Inc.

Serving Size: 4.23 fl. oz.

6. Vegetable Component

Please fill out the chart below to determine the creditable amount of vegetables.

Description of Creditable Ingredient per Food Buying Guide (FBG)	Vegetable Subgroup	Ounces per Raw Portion of Creditable Ingredient	Multiply	FBG Yield/ Purchase Unit	Creditable Amount ¹ (quarter cups)
100% Vegetable Juice	Red Orange	4.23 fl. oz.	x	4.23 fl. oz.	2

Total Creditable Vegetable Amount:

- FBG calculations for vegetables are in quarter cups. See chart on following page for quarter cup to cup conversions.
- Vegetables and vegetable purees credit on volume served. Tomato paste and puree will continue to credit as a calculated volume based on the yields in the FBG.
- At least ½ cup of recognizable vegetable is required to contribute towards the vegetable component or a specific vegetable subgroup.
- The other vegetable subgroup may be met with any additional amounts from the dark green, red/orange, and beans/peas (legumes) vegetable subgroups.
- School food authorities may offer any vegetable subgroup to meet the total weekly requirement for the additional vegetable subgroup.
- Please note that raw leafy green vegetables credit as half the volume served in school meals (For example: 1 cup raw spinach credits as ½ cup dark green vegetable. Legumes may credit towards the vegetable component or the meat alternate component, but not as both in the same meal. The school menu planner will decide how to incorporate legumes into the school meal. However, a manufacturer should provide documentation to show how legumes contribute towards the vegetable component and the meat alternate component. See chart on the following page for conversion factors
- The PFS for meat/meat alternate may be used to document how legumes contribute towards the meat alternate component.

Total Cups
Beans/Peas
(Legumes)

Total Cups
Dark Green

Total Cups
Red/Orange

Total Cups
Starchy

Total Cups
Other

.50

I certify the above information is true and correct and that 4.23 fl. oz. ounce serving of the above product contains 1/2 cup(s) of other/ additional vegetables.

Gregory Goulet

Signature

Vice President - Sales

Title

Greg Goulet

Printed Name

1/1/2020

Date

973-465-1113

Phone Number



Plant Locations
Newark, NJ • Ewing,
Phoenix, AZ • Newnan

*Totally
Juice.*

*Farm &
Orchard.*

30.02.202



4 Sieve Cut Green Beans (4CG) Item # 1224

6 LB. 10 OZ. Net Weight (3.00 kg)

Packaged 6/10 cans per unit

Ingredients: Green Beans, Water, Salt.

Nutrition Facts

Serving Size 1/2 cup (125g)

Servings Per Container 24

Amount Per Serving

Calories 25 Calories from Fat 0

% Daily Value*

Total Fat 0g 0%

Saturated Fat 0g 0%

Trans Fat 0g

Polyunsaturated Fat 0g

Monounsaturated Fat 0g

Cholesterol 0mg 0%

Sodium 140mg 6%

Potassium 150mg 4%

Total Carbohydrate 4g 1%

Dietary Fiber 2g 8%

Sugars 1g

Protein 1g

Vitamin A 4% • Vitamin C 2%

Calcium 2% • Iron 2%

*Percent Daily Values are based on a 2,000 calorie diet. Your daily values may be higher or lower depending on your calorie needs:

	Calories:	2,000	2,500
Total Fat	Less than	65g	80g
Saturated Fat	Less than	20g	25g
Cholesterol	Less than	300mg	300mg
Sodium	Less than	2,400mg	2,400mg
Potassium		3,500 mg	3,500 mg
Total Carbohydrate		300g	375g
Dietary Fiber		25g	30g

Calories per gram:

Fat 9 • Carbohydrate 4 • Protein 4

Effective Date: May 25, 2012

Say hello to subscriptions... [Get Your Box](#)

It's authentic Louisiana cookin' in a box!



The Camellia Brand signature bean – creamy, hearty, and beloved in New Orleans and across America’s Gulf Coast. It’s an old New Orleans tradition to cook up Red Beans and Rice every Monday, which was historically the laundry day. Simmer or slow-cook them to creamy perfection with the holy trinity of vegetables and add ham hocks and other seasoning meats if you like. Plate them as is or with smoked sausage, fried chicken, or a pan-fried pork chop on the side. Like all of our beans, Camellia’s Red Kidneys are non-GMO, gluten-free, and meet the “Hayward Standard” – the name our growers gave our bean quality standard – which exceeds the top USDA requirements. Try some today – we think you’ll taste the difference.

[Buy Online](#) [Where to Buy](#) [Nutritional Information](#)

About Red Kidney Beans

Nutrition Facts [close](#)

Serving Size: 1 Cup Cooked	
Number of Servings: 6	
Amount Per Serving	
Calories 230	Calories from Fat 9
% Daily Value	
Total Fat 1	1%
Saturated Fat 0g	0%

In New Orleans and South Louisiana we love the red bean so r but it's found in cuisines worldwide. Rajma masala is a spicy I with rice, and red bean ice cream is a popular Asian dessert. R Peru and are part of a larger group called "common beans," wh 8,000 years ago.

[Read More](#)

Trans Fat	0g	
Cholesterol	0mg	0%
Sodium	4mg	0%
Total Carbohydrate	40g	13%
Dietary Fiber	16g	64%
Sugars	1g	
Protein	15g	64%

*Percent Daily Values are based on a 2,000 calorie diet. Your daily values may be higher or lower depending on your calorie needs.

Related Recipes

[Show all Recipes for Red Kidney Beans](#)



Frenchmen Street Red Beans and Rice Soup

7



Say hello to subscriptions... [Get Your Box](#)*It's authentic Louisiana cookin' in a box!*

Camellia Brand Navy (Pea) Beans are white and hold their oval shape even when fully cooked to tenderness. When it comes to Southern-style or Boston baked beans – they are The Bean. The tangy Worcestershire and sweet brown sugar are the perfect complements to this firm, mild tasting legume. Or add them to soups and stews of any flavor or cuisine. Navy Beans are easily interchangeable with Camellia Brand Great Northern Beans. Like all of our beans, Camellia's Navy (Pea) Beans are non-GMO, gluten-free, and meet the "Hayward Standard" – the name our growers gave our bean quality standard – which exceeds the top USDA requirements. Try some today – we think you'll taste the difference.

[Buy Online](#)[Where to Buy](#)[Nutritional Information](#)

About Navy Beans

Why "Navy"? Because of their super-charged nutritional value in the 19th century the U.S. Navy began issuing these beans as

Nutrition Facts

[close](#)

Serving Size: 1 Cup, Cooked
Number of Servings: 6

Amount Per Serving

Calories 260 Calories from Fat 9

% Daily Value

Total Fat 1 1%

Saturated Fat 0g 0%

Trans Fat 0g

their warships. Baked navy beans are so popular in the history that it's called "Bean Town."

In Washington, D.C., in the restaurant of the U.S. Senate, Senat menu every day since about 1903, as the story goes.

[Read More](#)

Cholesterol	0mg	0%
Sodium	2mg	0%
Total Carbohydrate	48g	16%
Dietary Fiber	12g	48%
Sugars	4g	
Protein	16g	48%

*Percent Daily Values are based on a 2,000 calorie diet. Your daily values may be higher or lower depending on your calorie needs.

Related Recipes
[Show all Recipes for Navy Beans](#)



Navy Bean Salad

6



Cranberry Barbecue Beans

20.02.2012



Medium Sliced Carrots (SCM) Item # 93214

6 LB. 9 OZ. Net Weight (2.98 kg)

Packaged 6/10 cans per unit

Ingredients: Carrots, Water, Calcium Chloride Added to Help Maintain Firmness.

Nutrition Facts

Serving Size 1/2 cup (127g)
Servings Per Container 23

Amount Per Serving

Calories 30 Calories from Fat 0

% Daily Value*

Total Fat 0g 0%

Saturated Fat 0g 0%

Trans Fat 0g

Polyunsaturated Fat 0g

Monounsaturated Fat 0g

Cholesterol 0mg 0%

Sodium 5mg 0%

Potassium 100mg 3%

Total Carbohydrate 6g 2%

Dietary Fiber 3g 12%

Sugars 3g

Protein 1g

Vitamin A 80% • Vitamin C 0%

Calcium 2% • Iron 6%

*Percent Daily Values are based on a 2,000 calorie diet. Your daily values may be higher or lower depending on your calorie needs:

		Calories: 2,000	2,500
Total Fat	Less than	65g	80g
Saturated Fat	Less than	20g	25g
Cholesterol	Less than	300mg	300mg
Sodium	Less than	2,400mg	2,400mg
Potassium		3,500 mg	3,500 mg
Total Carbohydrate		300g	375g
Dietary Fiber		25g	30g

Calories per gram:
Fat 9 • Carbohydrate 4 • Protein 4

Effective Date:
July 20, 2012

Bush's Best Easy Entrees Texas Ranchero, 108 Ounces



DOT 666759 GTIN 10039400010712 MY 250138 MFR 01071



Stocked

Product Broker
CORE FS/CHINO, CA

(909) 438-2626

14544 Central Avenue, Suite
42
Chino, CA 91710

Temperature	Dry Goods
How Packed	6.75 LB 6 per case
Shipping Weight / Net Weight	45.8 lbs / 40.5 lbs
Cube	0.949 cube
Pallet Configuration	8 per layer 7 layers 56 per pallet
Dimensions	18.7500" L 12.5000" W 7.0000" H
Shelf Life / Guarantee	730 days / 183 days
Certifications	Gluten Free
Country of Origin	United States

Features

Treat Your Patrons To The Authentic, Bold Flavor Of The Southwest With Bush's Easy Entrees Texas Ranchero Pinto Beans. Seasoned With Mexican Oregano, Cumin, And Onion These Savory Beans Have A Slight Hint Of Spice For A Kick In The Taste Buds. Try Bush's Easy Entrees Texas Ranchero Pinto Beans As A Flavorful Addition To A Taco Salad, Served Simply On A Scoop Of Rice, Or Use Your Favorite Ingredients For Signature Charro Beans They Won'...

Preparation Simmer - Empty Contents Into Saucepan. Heat To Simmer.	Storage Store In A Clean Dry Place
--	--

Ingredients

Prepared Pinto Beans, Water, Tomato Puree (Tomato Paste, Water). Contains 1% Or Less Of: Mexican Oregano, Tomato Powder, Spice, Onion Powder, Garlic Powder, Natural Flavor, Modified Corn Starch, Jalapeo Powder, Salt, Extractive Of Paprika.

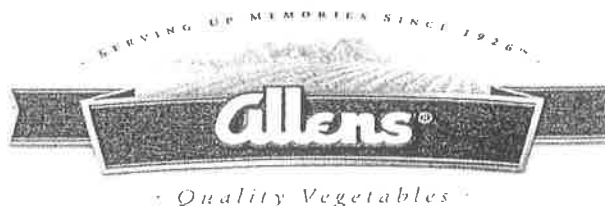
<input checked="" type="checkbox"/> Contains <input type="checkbox"/> May Contain <input type="checkbox"/> Free From	Known Certifications for This Product: Gluten Free
--	--

Serving Size

Nutrition Facts	
(Unprepared)	
23 Servings Per Container	
Serving Size 130 g (0.5 Cup)	
Amount Per Serving	
Calories	110
% Daily Value*	
Total Fat 0.5 g	1%
Saturated Fat 0 g	0%
Trans Fat 0 g	
Cholesterol 0 mg	0%
Sodium 490 mg	21%
Total Carbohydrate 20 g	7%
Dietary Fiber 5 g	17%
Sugar 1 g	
Added Sugar 0 g	0%
Protein 6 g	
Vitamin D 0 µg	0%
Potassium 400 mg	8%
Calcium 42 mg	4%
Iron 2 mg	10%
* The % Daily Value (DV) tells you how much a nutrient in a serving of food contributes to a daily diet. 2,000 calories a day is used for general nutrition advice.	

Notes:

- The actual nutritional label(s), allergens, dietary claims, and ingredients may vary slightly
- The values displayed above are provided by the vendor of the item (Bush Brothers And Company) and are not provided by Dot Foods
- Source GTIN:
00039400010715/Consumer or Base



Whole Kernel Corn (WKC) Item # 70213

6 LB. 10 OZ. Net Weight (3.01 kg)

Packaged 6/ 10 cans per unit

Ingredients: Golden Whole Kernel Corn, Water, Sugar, Salt.

Nutrition Facts

Serving Size 1/2 cup (125g)

Servings Per Container 24

Amount Per Serving

Calories 90 **Calories from Fat 5**

% Daily Value*

Total Fat 1g **2%**

Saturated Fat 0g **0%**

Trans Fat 0g

Polyunsaturated Fat 0g

Monounsaturated Fat 0g

Cholesterol 0mg **0%**

Sodium 140mg **6%**

Potassium 150mg **4%**

Total Carbohydrate 18g **6%**

Dietary Fiber 2g **8%**

Sugars 4g

Protein 3g

Vitamin A 0% • Vitamin C 0%

Calcium 0% • Iron 2%

*Percent Daily Values are based on a 2,000 calorie diet. Your daily values may be higher or lower depending on your calorie needs:

		Calories:	2,000	2,500
Total Fat	Less than	65g	80g	
Saturated Fat	Less than	20g	25g	
Cholesterol	Less than	300mg	300mg	
Sodium	Less than	2,400mg	2,400mg	
Potassium		3,500 mg	3,500 mg	
Total Carbohydrate		300g	375g	
Dietary Fiber		25g	30g	

Calories per gram:

Fat 9 • Carbohydrate 4 • Protein 4

Effective Date:
May 23, 2012

30-02-213



4 Sieve Sweet Peas (SP4) Item # 47214

6 LB. 9 OZ. Net Weight (2.977 kg)
Packaged 6/10 cans per unit
Ingredients: Sweet Peas, Water, Sugar, Salt.

Nutrition Facts

Serving Size 1/2 cup (129g)
Servings Per Container 24

Amount Per Serving

Calories 90 Calories from Fat 5

% Daily Value*

Total Fat 0.5g 1%

Saturated Fat 0g 0%

Trans Fat 0g

Polyunsaturated Fat 0g

Monounsaturated Fat 0g

Cholesterol 0mg 0%

Sodium 140mg 6%

Potassium 170mg 5%

Total Carbohydrate 16g 5%

Dietary Fiber 6g 24%

Sugars 4g

Protein 4g

Vitamin A 8% • Vitamin C 0%

Calcium 2% • Iron 8%

*Percent Daily Values are based on a 2,000 calorie diet. Your daily values may be higher or lower depending on your calorie needs:

		Calories: 2,000	2,500
Total Fat	Less than	65g	80g
Saturated Fat	Less than	20g	25g
Cholesterol	Less than	300mg	300mg
Sodium	Less than	2,400mg	2,400mg
Potassium		3,500 mg	3,500 mg
Total Carbohydrate		300g	375g
Dietary Fiber		25g	30g

Calories per gram:

Fat 9 • Carbohydrate 4 • Protein 4

Effective Date:
August 24, 2012



Del Monte Foods, Inc.

Cultivating Good Food for a Better Life

PRODUCT SPECIFICATION

Product Name:	Diced White Potatoes
Product #:	15213
General Information:	Product is manufactured in accordance with the Good Manufacturing Practices (21CFR, parts 110 & 113). This product and packaging conforms to the latest provisions of the Food, Drug, and Cosmetic Act, to all applicable USDA regulations, to the state regulations in which the facility is located, and adhere to facility HACCP programs. Our company is in current compliance with the Food Safety Modernization Act and all of our facilities are registered with the FDA.
Product Description:	Canned diced white potatoes are prepared from fresh or stored potatoes. They are prepared by washing, peeling the potatoes, then sizing and dicing. They are then packaged in hermetically sealed containers with brine and sufficiently processed by heat to assure commercial sterility.
Grade:	Product conforms to U.S. Standards for Grade A.
Color:	White to cream, may be dull with slight yellowish flesh depending upon variety. Shall not possess abnormal oxidation or greening.
Aroma/Odor:	Good aroma characteristic of white potatoes; no off odors.
Flavor:	Good flavor characteristic of white potatoes; no off flavors.
Texture:	Smooth to slight firm to the bite. Shall not be hard or grainy.
Size:	Reasonably uniform in size. 3/8" dice size.
Kosher:	Star K (available for use only with private label agreement)
Allergens:	No allergens from the eight major allergens classified by the Food Allergen Labeling and Consumer Protection Act of 2004 (milk, eggs, fish, shellfish, tree nuts, peanuts, wheat, and soybeans).
Gluten:	Gluten Free as defined by the FDA
Chemical Standards:	Salt % 0.30%-0.50%; target 0.50%
Physical Factors:	Headspace- 4/16"-7/16"; target 6/16" Vacuum- 5"Hg-10"Hg; target 7.5"Hg Net Weight- 105oz Drained Weight- 69oz

CONFIDENTIAL



Del Monte Foods, Inc.

Cultivating Good Food for a Better Life

Microbiological:	Commercial Sterility
Foreign Material:	Zero tolerance for metal, filth, wood, glass, rodent hair, dead insects, etc.
MSDS:	Not Applicable
Country of Origin:	USA
Storage/Shipping/Handling:	Gross case weight 48 lbs. Case Dimensions (inches): 7 3/16" High x 12 3/8" Wide x 18 1/2" Long Shipping Temp. Requirements: Ambient (34°F-95°F) Storage Temp. Requirements: Ambient (34°F-95°F)
Corrugated Requirements:	Cube: 0.95 Cases per Pallet: 49 Cases per Layer (TI): 7 Layers per Pallet (HI): 7
Shelf Life:	Three years from date of pack.
Closure / Case:	Shrink wrapped tray
Individual Can:	Hermetically Sealed Steel plated tin can; 603X700

QUALITY SYSTEMS APPROVAL: Danny Bolstad

Issue Date: March 2, 2016

CONFIDENTIAL



Del Monte Foods, Inc.

Cultivating Good Food for a Better Life

Nutritional Information

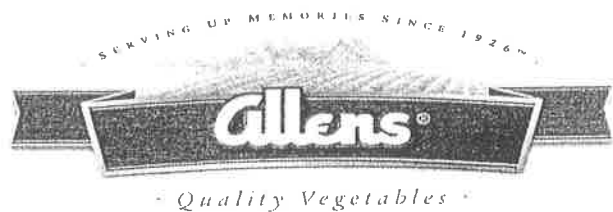
Ingredients Statement: White Potatoes, Water, Salt, Calcium Chloride Added to Help Maintain Firmness, Calcium Disodium EDTA Added to Help Promote Color Retention.

Nutrition Facts	
Serving Size 2/3 cup (163g)	
Servings Per Container about 19	
Amount Per Serving	
Calories 70	Calories from Fat 0
% Daily Value*	
Total Fat 0g	0%
Saturated Fat 0g	0%
Trans Fat 0g	
Polyunsaturated Fat 0g	
Monounsaturated Fat 0g	
Cholesterol 0mg	0%
Sodium 140mg	6%
Potassium 240mg	7%
Total Carbohydrate 14g	5%
Dietary Fiber 2g	8%
Sugars 1g	
Protein 2g	
Vitamin A 0%	Vitamin C 0%
Calcium 15%	Iron 2%
*Percent Daily Values are based on a 2,000 calorie diet. Your daily values may be higher or lower depending on your calorie needs:	
	Calories: 2,000 2,500
Total Fat	Less than 65g 80g
Saturated Fat	Less than 20g 25g
Cholesterol	Less than 300mg 300mg
Sodium	Less than 2,400mg 2,400mg
Potassium	3,500 mg 3,500 mg
Total Carbohydrate	300g 375g
Dietary Fiber	25g 30g
Calories per gram:	
Fat 9 • Carbohydrate 4 • Protein 4	

SPECIFICATION ENDS HERE

CONFIDENTIAL

30-02-219



Cut Sweet Potatoes (SWC)

Item # 08213

6 LB. 14 OZ. Net Weight (3.12 kg)

Packaged 6/10 cans per unit

Ingredients: Sweet Potatoes, Water, Corn Syrup, Sugar.

Nutrition Facts

Serving Size 2/3 cup (162g)
Servings Per Container 19

Amount Per Serving

Calories 150 **Calories from Fat 10**

% Daily Value*

Total Fat 1g **2%**

Saturated Fat 0g **0%**

Trans Fat 0g

Polyunsaturated Fat 0g

Monounsaturated Fat 0g

Cholesterol 0mg **0%**

Sodium 10mg **0%**

Potassium 350mg **10%**

Total Carbohydrate 35g **12%**

Dietary Fiber 4g **16%**

Sugars 14g

Protein 1g

Vitamin A 190% • Vitamin C 8%

Calcium 2% • Iron 4%

*Percent Daily Values are based on a 2,000 calorie diet. Your daily values may be higher or lower depending on your calorie needs:

		Calories: 2,000	2,500
Total Fat	Less than	65g	80g
Saturated Fat	Less than	20g	25g
Cholesterol	Less than	300mg	300mg
Sodium	Less than	2,400mg	2,400mg
Potassium		3,500 mg	3,500 mg
Total Carbohydrate		300g	375g
Dietary Fiber		25g	30g

Calories per gram:
Fat 9 • Carbohydrate 4 • Protein 4

Effective Date: July 30, 2010

BAF Scalloped Potato Casserole, reduced sodium, complete kit with sauce, 264 4oz servings per case, one pan convenience, 6/2.25 lb ctns

Dot #: 366868
Mfr #: 94595
GTIN: 10011140945950
Supplier: Basic American Foods, Inc.
Description: BAF Scalloped Potato Casserole, reduced sodium, complete kit with sauce, 264 4oz servings per case, one pan convenience, 6/2.25 lb ctns

Product Information

Classification: Vegetable Based Products / Meals - Not Ready to Eat (Shelf Stable) (10000292)
Dimensions (HxWxD): 9.75 x 12.06 x 17.62 Inch
Weight Gross / Net: 15.98 Pound / 13.5 Pound
Origin: (US) UNITED STATES
Storage Temperature: 0° to 80°
Pallet Configuration: Ti:9 Hi:5
Servings Per Container: 216

Features and Benefits (Case GTIN: 10011140945950)

Features: Yield: 66.07 LB prepared per case. Savory butter sauce with herbs and thin-sliced potatoes. 200mg of sodium per serving makes it a fit for dietary restrictions and increases menu flexibility.

Preparation and Cooking: Bake - 1: Add 5 quarts boiling water (212°F) for convection oven (4 1/2 quarts for conventional) and 4 ounces unsalted butter to a 2 1/2" deep full-size steamtable pan. 2: Stir in sauce mix until dissolved. 3: Add potato slices. Stir. 4: Bake in convection oven at 300°F for 45-60 minutes. For conventional oven, bake at 400°F for 45-60 minutes. [Alternate] For half carton prep, use half of each ingredient amount specified. Cook time and temperature remain the same.

Serving Suggestions: Potato casseroles are a classic, comforting side dish that your patrons love. Make your best sides even better by adding additional ingredients to this base for your own signature side. Rosemary Scalloped Potatoes - add heavy cream and rosemary.

Storage: Store cool dry (less than 80 degrees F)



Features and Benefits (Consumer or Base GTIN: 00011140945953)

Features: Yield: 66.07 LB prepared per case. Savory butter sauce with herbs and thin-sliced potatoes. 200mg of sodium per serving makes it a fit for dietary restrictions and increases menu flexibility.

Preparation and Cooking: Bake - 1: Add 5 quarts boiling water (212°F) for convection oven (4 1/2 quarts for conventional) and 4 ounces unsalted butter to a 2 1/2" deep full-size steamtable pan. 2: Stir in sauce mix until dissolved. 3: Add potato slices. Stir. 4: Bake in convection oven at 300°F for 45-60 minutes. For conventional oven, bake at 400°F for 45-60 minutes. [Alternate] For half carton prep, use half of each ingredient amount specified. Cook time and temperature remain the same.

Serving Suggestions:

Potato casseroles are a classic, comforting side dish that your patrons love. Make your best sides even better by adding additional ingredients to this base for your own signature side. Rosemary Scalloped Potatoes - add heavy cream and rosemary.

Storage:

Store cool dry (less than 80 degrees F)

Nutritionals and Ingredients (Case GTIN: 10011140945950)

Representation of label(s). The actual nutritional label(s) and ingredients may vary slightly

Nutrition Facts (Unprepared)	
216 Servings Per Container	
Serving Size	28.652 g
Amount Per Serving	
Calories	110
% Daily Value*	
Total Fat 1 g	1%
Saturated Fat 0 g	0%
Trans Fat 0 g	
Cholesterol 0 mg	0%
Sodium 200 mg	9%
Total Carbohydrate 22 g	8%
Dietary Fiber 1 g	4%
Sugar 4 g	0%
Added Sugar 2 g	4%
Protein 2 g	0%
Vitamin D 0 µg	0%
Potassium 460 mg	10%
Calcium 30 mg	2%
Iron 0.3 mg	2%
* The % Daily Value (DV) tells you how much a nutrient in a serving of food contributes to a daily diet. 2,000 calories a day is used for general nutrition advice.	

Child Nutrition Label:

No

Ingredients:

POTATO (DRY), SEASONING [MODIFIED FOOD STARCH, WHEY, LACTOSE, DRIED ONION, CORN SYRUP SOLIDS, SUNFLOWER OIL, SALT, POTASSIUM CHLORIDE, DRIED GARLIC, MALTODEXTRIN, CREAM CHEESE (PASTEURIZED CREAM, CHEESE CULTURE, SALT, CAROB BEAN GUM, GUAR GUM), NATURAL FLAVORS, DIPOTASSIUM PHOSPHATE, DRIED GREEN ONION, MONO AND DIGLYCERIDES, CHEDDAR CHEESE (PASTEURIZED MILK, CHEESE CULTURES, SALT, ENZYMES), YEAST EXTRACT, NONFAT MILK, SPICES, ANNATTO EXTRACT (COLOR), AND SOYBEAN OIL]. FRESHNESS PRESERVED WITH SODIUM BISULFITE. CONTAINS: MILK.

Nutritionals and Ingredients (Consumer or Base GTIN: 00011140945953)

Representation of label(s). The actual nutritional label(s) and ingredients may vary slightly

Nutrition Facts (Unprepared)	
36 Servings Per Container	
Serving Size	28.652 g
Amount Per Serving	
Calories	110
	% Daily Value*
Total Fat 1 g	1%
Saturated Fat 0 g	0%
Trans Fat 0 g	
Cholesterol 0 mg	0%
Sodium 200 mg	9%
Total Carbohydrate 22 g	8%
Dietary Fiber 1 g	4%
Sugar 4 g	0%
Added Sugar 2 g	4%
Protein 2 g	0%
Vitamin D 0 µg	0%
Potassium 460 mg	10%
Calcium 30 mg	2%
Iron 0.3 mg	2%
* The % Daily Value (DV) tells you how much a nutrient in a serving of food contributes to a daily diet. 2,000 calories a day is used for general nutrition advice.	

Child Nutrition Label:

No

Ingredients:

POTATO (DRY), SEASONING [MODIFIED FOOD STARCH, WHEY, LACTOSE, DRIED ONION, CORN SYRUP SOLIDS, SUNFLOWER OIL, SALT, POTASSIUM CHLORIDE, DRIED GARLIC, MALTODEXTRIN, CREAM CHEESE (PASTEURIZED CREAM, CHEESE CULTURE, SALT, CAROB BEAN GUM, GUAR GUM), NATURAL FLAVORS, DIPOTASSIUM PHOSPHATE, DRIED GREEN ONION, MONO AND DIGLYCERIDES, CHEDDAR CHEESE (PASTEURIZED MILK, CHEESE CULTURES, SALT, ENZYMES), YEAST EXTRACT, NONFAT MILK, SPICES, ANNATTO EXTRACT (COLOR), AND SOYBEAN OIL]. FRESHNESS PRESERVED WITH SODIUM BISULFITE. CONTAINS: MILK.

Allergens and Diet (Case GTIN: 10011140945950)

Representation of allergens and dietary claims. The actual allergens and dietary claims may vary slightly.

Allergen Values (FDA)

Contains: Milk, SO2 & Sulphites

Free From:

Peanuts, Tree Nuts, Eggs, Fish, Crustacean, Soy, Wheat

Suitable For Diet

Gluten Free Yes

Allergens and Diet (Consumer or Base GTIN: 00011140945953)

Representation of allergens and dietary claims. The actual allergens and dietary claims may vary slightly.

Allergen Values (FDA)

Contains: Milk, SO2 & Sulphites

Suitable For Diet

Gluten Free Yes

Free From:

Peanuts, Tree Nuts, Eggs, Fish, Crustacean, Soy, Wheat

Powered by Sync/PDI

PRODUCT TECHNICAL DATA

Premium Tomato & Food Products

P.O. BOX 83 • ELWOOD, IN 46036 • TEL (765) 557-5500 • FAX (765) 557-5500 • www.redgold.com



Revision Date

05/23/13

UA99

TOMATO PASTE, 111 OZ

NET WT. 111 OZ. (6 LBS. 15 OZ.) 3.15kg

Nutrition Facts

Serving Size 2 Tbsp (33g)

Servings Per Container about 95

Amount Per Serving

Calories 30 Calories from Fat 0

% Daily Value*

Total Fat 0g 0%

Saturated Fat 0g 0%

Trans Fat 0g

Cholesterol 0mg 0%

Sodium 15mg 1%

Potassium 270mg 8%

Total Carbohydrate 7g 2%

Dietary Fiber 2g 8%

Sugars 4g

Protein 2g

Vitamin A 8% • Vitamin C 8%

Calcium 2% • Iron 4%

* Percent Daily Values are based on a 2,000 calorie diet. Your Daily Values may be higher or lower depending on your calorie needs.

	Calories:	2,000	2,500
Total Fat	Less than	65g	80g
Sat Fat	Less than	20g	25g
Cholesterol	Less than	300mg	300mg
Sodium	Less than	2,400mg	2,400mg
Total Carbohydrate		300g	375g
Dietary Fiber		25g	30g

LABELING AREA

>40 in²

ADD %DV FOOTNOTE

Yes

LABEL DIMENSIONS (WxH)

19-5/8"x6-5/8"

includes 1/2" right hand lap

INGREDIENT DECLARATION

Tomatoes and Citric Acid

COMMENTS

NSLP: 0.4oz = 1/4 cup serving of Red/Orange Vegetable

0.8oz = 1/2 cup serving of Red/Orange Vegetable

1.2oz = 3/4 cup serving of Red/Orange Vegetable

I certify that this information is true and correct.

Erin Webb

5/3/2013

Erin Webb

Date

Product Development



Idahoan Foods, LLC
352 Commerce Way
Tulsa, OK 74103

TEL : 208.442.5242
FAX : 208.442.5242
www.idahoanfoods.com

Idahoan Baby Reds Mashed Potatoes w/red skin-10029700003446 – 16.4 lbs.

Purchase Units: 32.85 oz. bag (8 bags per case) Vegetable

PORTIONING INFORMATION - USDA School Lunch Meal Planning

The following information is provided for food, as purchased (dry) using the USDA Food Buying Guide for Child Nutrition November 2001 – Potatoes, dehydrated Flake Low moisture

Description of Creditable Ingredient per Food Buying Guide (FBG)	Vegetable Subgroup	Ounces per Raw Portion of Creditable Ingredient	Multiply	FBG Yield/ Purchase Unit	Creditable Amount ¹ (quarter cups)	
Potatoes, dehydrated Flake Low moisture	Starchy	0.414	X	3.1563	1.307	
Potatoes, dehydrated Flake Low moisture	Starchy	0.828	X	3.1563	2.614	
Total Creditable Vegetable Amount:					1- ¼ cup 2- ¼ cups	
<ul style="list-style-type: none">¹ FBG calculations for vegetables are in quarter cups. See chart on following page for quarter cup to cup conversions.Vegetables and vegetable purees credit on volume served.At least ¼ cup of recognizable vegetable is required to contribute towards the vegetable component or a specific vegetable subgroup.The other vegetable subgroup may be met with any additional amounts from the dark green, red/orange, and beans/peas (legumes) vegetable subgroups.School food authorities may offer any vegetable subgroup to meet the total weekly requirement for the additional vegetable subgroup.Please note that raw leafy green vegetables credit as half the volume served in school meals (For example: 1 cup raw spinach credits as ½ cup dark green vegetable. Legumes may credit towards the vegetable component or the meat alternate component, but not as both in the same meal. The school menu planner will decide how to incorporate legumes into the school meal. However, a manufacturer should provide documentation to show how legumes contribute towards the vegetable component and the meat alternate component. See chart on the following page for conversion factorsThe PFS for meat/meat alternate may be used to document how legumes contribute towards the meat alternate component.					Total Cups Beans/Peas (Legumes)	
					Total Cups Dark Green	
					Total Cups Red/Orange	
					Total Cups Starchy	One – ½ cup at 0.828 oz. Two – ¼ cups at 0.414 oz.
					Total Cups Other	

Serving Size	Ounces	Servings per Bag	Servings per Case	Purchase Units per 100 servings
¼ cup + ½ Teaspoon	0.414	79.35	634.78	2 Bags
½ cup + 1 Teaspoon	0.828	39.67	317.39	3 Bags



Idahoan Foods, LLC
392 Commerce Way
Idaho Falls, ID 83402

TEL: 208.342.5200
FAX: 208.342.5197
www.idahoanfoods.com

Nutrition Information	¼ cup + ½ tsp	½ cup + 1 tsp	Per 100g
Weight	0.414 oz.	0.828 oz.	100g
Calories (kcal)	45.71	91.42	389.46
Calories from Fat	9.63	19.26	82.04
Fat (g)	1.07	2.14	9.12
Saturated Fat (g)	0.74	1.49	6.35
Trans Fatty Acid (g)	0.00	0.01	0.03
Cholesterol (mg)	0.10	0.21	0.88
Carbohydrates (g)	8.45	16.89	71.96
Dietary Fiber (g)	0.59	1.18	5.02
Total Sugars (g)	0.65	1.30	5.54
Protein (g)	0.82	1.64	7.00
Water (g)	0.61	1.22	5.21
Vitamin A - IU (IU)	3.75	7.50	31.97
Vitamin C (mg)	1.39	2.77	11.81
Sodium (mg)	159.68	319.36	1360.50
Calcium (mg)	5.27	10.54	44.88
Iron (mg)	0.11	0.22	0.95

Ingredients: Idaho® potatoes (russet and red varieties), vegetable oil (contains one or more of the following: coconut, palm, soybean, cottonseed, sunflower, canola), corn syrup solids, salt, maltodextrin, nonfat dry milk, sugar, sodium caseinate, butter powder [butter (sweet cream, salt, annatto color), nonfat milk solids, sodium caseinate and disodium phosphate], mono and diglycerides, calcium stearoyl lactylate, natural and artificial flavors (milk, soy), spice, sodium acid pyrophosphate (preserve freshness), sodium bisulfite (preserve freshness), dipotassium phosphate, artificial color, citric acid (preserve freshness), mixed tocopherols (preserve freshness) and less than 2% silicon dioxide added as an anti-caking agent.

Contains: MILK, SOYBEAN

I certify the above information is true and correct and that a 0.414 ounce serving of the above product contains ¼ cup of starchy vegetables and a 0.828 ounce serving of the above product contains ½ cup of starchy vegetables.

September 15, 2015
Date

Maissa Guibon
Research & Development



2970022313 - Idahoan Real Mashed With Vitamin C Pouch--12 ct/26 oz.

1 min., 1 step, preparation reduces labor costs, use hot or cold water, can be customized or prepared as is, made with 100% real Idaho potatoes

Brand: Idahoan®



Nutrition Facts

Serving Size 2/3 cup (140g)
Servings Per Container 40

Amount Per Serving

Calories 80	Calories from Fat 10
	% Daily Value*
Total Fat 1 g	1%
Saturated Fat 0 g	0%
Trans Fat 0.5 g	
Cholesterol 0 mg	0%
Sodium 310 mg	7%
Total Carbohydrate 17 g	6%
Dietary Fiber 1 g	6%
Sugars 1 g	
Protein 2 g	

Vitamin A 0 %	•	Vitamin C 50 %
Calcium 2 %	•	Iron 2 %
Vitamin D 0 %	•	

*Percent Daily Values are based on a 2,000 calorie diet. Your daily values may be higher or lower depending on your calorie needs.

	Calories:	2,000	2,500
Total Fat	Less than	65g	80g
Sat Fat	Less than	20g	25g
Cholesterol	Less than	300mg	300mg
Sodium	Less than	2,400mg	2,400mg
Total Carbohydrate		300g	375g
Dietary Fiber		25g	30g

Calories per gram:
Fat 9 • Carbohydrate 4 • Protein 4

Ingredients

Idaho Potatoes, Salt, Vegetable Oil (Contains One Or More of the Following: Canola, Soybean, Cottonseed, Sunflower), Nonfat Dry Milk, Monoglycerides, Calcium Stearoyl Lactylate, Spice, Artificial Color, Natural And Artificial Flavor, Sodium Acid Pyrophosphate (Preservative), Vitamin C, Sodium Bisulfite (Preservative), Citric Acid (Preservative) And Mixed Tocopherols (Preservative).

Case Specifications

GTIN	10029700223134	Case Net Weight	19.50 LB
Item UPC		Case L,W,H	15.50 IN, 11.20 IN, 11 IN
Unit Size	12 / 312OZ	Cube	1,11 CF
Shelf Life	365 Days	Tie x High	10 x 4
Case Gross Weight	21.36 LB	Kosher Status	Yes

Preparation and Cooking

One minute, one step preparation. Prepare with hot or cold water

Serving Suggestions

One minute, one step preparation. Prepare with hot or cold water

Packaging and Storage

Store away from direct heat, in a cool, dry location, away from strong contaminating odors. Storage conditions should not exceed 80 degrees F and 60% R.H.

Allergens

FREE FROM:

Eggs or Egg Derivatives, Fish or Fish Derivatives, Peanuts or Peanut Derivatives, Sesame seeds or Sesame seed Derivatives, Shellfish or Shellfish Derivatives, Sulphites or Sulphite Derivatives, Tree nuts or Tree nut Derivatives, Wheat or Wheat Derivatives, Crustaceans or Crustacean Derivatives

MAY CONTAIN:

Milk or Milk Derivatives, Soybeans or Soybean Derivatives

PRODUCT TECHNICAL DATA

Premium Tomato & Food Products

P.O. BOX 83 • ELWOOD, IN 46036 • TEL. (765) 557-5500 • FAX (765) 557-5501 • www.redgold.com



HA99

Revision Date

05/07/13

TOMATO SAUCE, 106 OZ

LABEL NET CONTENTS	106.0 oz (3.01kg)
PACKAGE TYPE	603×700 3-pc steel can
APPEARANCE/COLOR	Red-orange
TEXTURE	Smooth and free flowing
FLAVOR/AROMA	Tomato with spicy notes
RECOMMENDED STORAGE CONDITIONS	55 - 80°F
SHELF LIFE (@ recommended storage conditions)	30 Months
MICROBIOLOGICAL EXAMINATION	
HOWARD MOLD COUNT	40% max Commercial Sterility
INGREDIENT DECLARATION	
Tomato Concentrate (Water, Tomato Paste), Water, Salt, Onion Powder, Garlic Powder, Citric Acid, Natural Flavors	

PRODUCT TECHNICAL DATA*Premium Tomato & Food Products*

P.O. BOX 83 • ELWOOD, IN 46036 • TEL. (765) 557-5500 • FAX (765) 557-5501 • www.redgold.com



HA99

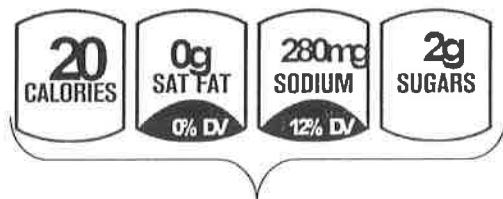
Revision Date

05/07/13

TOMATO SAUCE, 106 OZ

NET WT. 106 OZ. (6 LBS. 10 OZ.) 3.01kg

Nutrition Facts	
Serving Size 1/4 Cup (61g)	
Servings Per Container about 49	
Amount Per Serving	
Calories 20	Calories from Fat 0
% Daily Value*	
Total Fat 0g	0%
Saturated Fat 0g	0%
Trans Fat 0g	
Cholesterol 0mg	0%
Sodium 280mg	12%
Potassium 130mg	4%
Total Carbohydrate 4g	1%
Dietary Fiber 1g	4%
Sugars 2g	
Protein Less Than 1g	
Vitamin A 4%	Vitamin C 4%
Calcium 0%	Iron 4%
* Percent Daily Values are based on a 2,000 calorie diet. Your Daily Values may be higher or lower depending on your calorie needs.	
	Calories: 2,000 2,500
Total Fat	Less than 65g 80g
Sat Fat	Less than 20g 25g
Cholesterol	Less than 300mg 300mg
Sodium	Less than 2,400mg 2,400mg
Total Carbohydrate	300g 375g
Dietary Fiber	25g 30g

PER 1/4 CUP SERVING

BASIC ICONS

LABELING AREA>40 in²**ADD %DV FOOTNOTE**

Yes

LABEL DIMENSIONS (WxH)

19-5/8"x6-5/8"

includes 1/2" right hand lap

INGREDIENT DECLARATION

Tomato Concentrate (Water, Tomato Paste), Water, Salt, Onion Powder, Garlic Powder, Citric Acid, Natural Flavors

COMMENTS

NSLP: 1.2oz = 1/4 cup serving of Red/Orange Vegetable

2.4oz = 1/2 cup serving of Red/Orange Vegetable

3.6oz = 3/4 cup serving of Red/Orange Vegetable

I certify that this information is true and correct.

Erin Webb

5/3/2013

Erin Webb

Date

Product Development

PRODUCT TECHNICAL DATA
Premium Tomato & Food Products

P.O. BOX 83 • ELWOOD, IN 46036 • TEL (765) 557-5500 • FAX (765) 557-5501 • www.redgold.com



UXZBQ9B

Revision Date
05/27/11

DICED TOMATOES
NO SALT ADDED, 102 OZ
 NET WT. 102 OZ. (6 LBS. 6 OZ.) 2.89kg

Nutrition Facts

Serving Size 1/2 Cup (121g)

Servings Per Container about 24

Amount Per Serving

Calories 25 **Calories from Fat 0**

% Daily Value*

Total Fat 0g **0%**

Saturated Fat 0g **0%**

Trans Fat 0g

Cholesterol 0mg **0%**

Sodium 15mg **1%**

Potassium 230mg **7%**

Total Carbohydrate 5g **2%**

Dietary Fiber 1g **4%**

Sugars 3g

Protein 1g

Vitamin A 10% • **Vitamin C 15%**

Calcium 4% • **Iron 2%**

* Percent Daily Values are based on a 2,000 calorie diet. Your Daily Values may be higher or lower depending on your calorie needs.

	Calories:	2,000	2,500
Total Fat	Less than	65g	80g
Sat Fat	Less than	20g	25g
Cholesterol	Less than	300mg	300mg
Sodium	Less than	2,400mg	2,400mg
Potassium		3,500mg	3,500mg
Total Carbohydrate		300g	375g
Dietary Fiber		25g	30g

PER 1/2 CUP SERVING



BASIC ICONS



**SUGGESTED
OPTIONAL ICONS**

LABELING AREA

>40 in²

ADD %DV FOOTNOTE

Yes

LABEL DIMENSIONS (WxH)

19-5/8"x6-5/8"

includes 1/2" right hand lap

INGREDIENT DECLARATION

Tomatoes, Tomato Juice, Less Than 2% Of: Calcium Chloride, Citric Acid.

COMMENTS

- The statement "Not a Sodium Free Food" or "Not for Control of Sodium in the Diet" must appear on the information panel.
- Labeling Potassium content is not required per FDA regulations and is left to the discretion of the customer unless you use a Potassium optional icon, then the Potassium must be present in the Nutrition Fact panel.

PRODUCT TECHNICAL DATA

Premium Tomato & Food Products

P.O. BOX 83 • ELWOOD, IN 46036 • TEL. (765) 557-5500 • FAX (765) 557-5501 • www.redgold.com



NA9E

Revision Date

05/07/13

**REDPACK VITAMIN ENHANCED
MARINARA SAUCE**

W/ 100% RDI OF VITAMINS A, C & E

NET WT. 106 OZ. (6 LBS. 10 OZ.) 3.01kg

Nutrition Facts			
Serving Size 1/2 Cup (125g)			
Servings Per Container 24			
Amount Per Serving			
Calories 90		Calories from Fat 30	
% Daily Value*			
Total Fat 3.5g		5%	
Saturated Fat 0.5g		3%	
Trans Fat 0g			
Cholesterol 0mg		0%	
Sodium 140mg		6%	
Potassium 690mg		20%	
Total Carbohydrate 15g		5%	
Dietary Fiber 2g		8%	
Sugars 10g			
Protein 2g			
Vitamin A 100%		Vitamin C 100%	
Calcium 2%		Iron 6%	
Vitamin E 100%			
* Percent Daily Values are based on a 2,000 calorie diet. Your Daily Values may be higher or lower depending on your calorie needs.			
	Calories:	2,000	2,500
Total Fat	Less than	65g	80g
Sat Fat	Less than	20g	25g
Cholesterol	Less than	300mg	300mg
Sodium	Less than	2,400mg	2,400mg
Total Carbohydrate		300g	375g
Dietary Fiber		25g	30g

LABELING AREA

>40 in²

ADD %DV FOOTNOTE

Yes

LABEL DIMENSIONS (W×H)

19-5/8"×6-5/8"

includes 1/2" right hand lap

PER 1/2 CUP SERVING



BASIC ICONS

SUGGESTED
OPTIONAL ICONS

INGREDIENT DECLARATION

Tomato Concentrate (Water, Tomato Paste), Diced Tomatoes in Juice, Sugar, Soybean Oil, Natural Flavor, Potassium Chloride, Onion Powder, Garlic Powder, Salt, Spice, Vitamin C (Ascorbic Acid), Vitamin E (DL-Alpha Tocopheryl Acetate), Dehydrated Parsley, Citric Acid, Vitamin A (Retinol Palmitate)

COMMENTS

NSLP: 1.3oz = 1/4 cup serving of Red/Orange Vegetable
 2.6oz = 1/2 cup serving of Red/Orange Vegetable
 3.9oz = 3/4 cup serving of Red/Orange Vegetable

I certify that this information is true and correct.

Erin Webb

Erin Webb

Product Development

4/29/2013

Date



ConAgra Foods – Foodservice
 5 ConAgra Drive,
 Omaha, NE 68102
 TEL: 402-240-4000

Quality Attributes Sheet For Hunt's Manwich Original Sloppy Joe Sauce 4/107oz UPC 27000 44181

Ingredient Statement: Tomato Puree (Water, Tomato Paste), High Fructose Corn Syrup, Distilled Vinegar, Corn Syrup, Less than 2% of: Sugar, Dried Green and Red Bell Peppers, Salt, Chili Pepper, Tomato Fiber, Guar Gum, Spices, Xanthan Gum, Dried Garlic, Natural Flavors, Citric Acid.

Nutritional Information:

Per serving	1/4 cup (64g)
Calories	35
Calories From Fat	0
	% Daily Value
Total Fat, 0g	0%
Saturated Fat, 0g	0%
Trans Fat, 0g	
Cholesterol, 0mg	0%
Sodium, 310 mg	13%
Potassium, 160mg	5%
Carbohydrate, 8g	3%
Dietary Fiber, 2g	8%
Sugars, 6 g	
Protein, <1 g	
Vitamin A	6%
Vitamin C	0%
Calcium	0%
Iron	2%

Date: 10/2016

ALLERGENS	
Product Facts	
Gross Weight (lbs)	29.960
Net Weight (lbs)	26.750
Case Cube (ft ³)	0.657
Case Dimensions (LxWxH)	12.688 x 12.563 x 7.125
Pattern Tie x High = Total cases	12 x 6 = 72
Shelf Life	630 Days
Storage	Dry, Ambient
Kosher	Kosher - OK
Country of Origin Information	
Finished Product	USA

Shawn Fear
 Customer Facing Quality Manager, Food Service
 ConAgra Foods Inc.

50.03.100

Product Name	Cinnamon Bun
Flavor Description	Cinnamon Bun
ML Description	Specialty Characters
Brand	KELLOGG'S

Date Created	03-20-15
NLI #	07640
Koher Status	U.S.A.
Product of	U.S.A.

USDA Grains Equivalents of Grain per Serving	2
USDA Grains Equivalents of Meat/Meal Alternates	1
Carbohydrates	2 1/2
Fat	1
Protein	16
Free	

Serving Size	1 Package
Serving Size g	50
Serving Size oz	
Amount Per Serving	
Calories	220
Calories from Fat	60
% Daily Value*	
Total Fat	7 g 11 %
Saturated Fat	2 g 10 %
Trans Fat	0 g 0 %
Polyunsaturated Fat	0 g 0 %
Monounsaturated Fat	0 g 0 %
Cholesterol	0 mg 0 %
Sodium	230 mg 10 %
Potassium	37 mg 12 %
Total Carbohydrate	2 g 10 %
Dietary Fiber	0 g 0 %
Soluble Fiber	0 g 0 %
Insoluble Fiber	0 g 0 %
Sugars	12 g 24 %
Sugar Alcohol	0 g 0 %
Other Carbohydrate	0 g 0 %
Protein	4 g 8 %
Vitamin A	15 %
Vitamin C	15 %
Calcium	15 %
Vitamin D	15 %
Vitamin E	15 %
Vitamin K	25 %
Iron	20 %
Niacin	15 %
Vitamin B6	15 %
Folic Acid	15 %
Vitamin B12	15 %
Biotin	15 %
Phosphorus	15 %
Magnesium	15 %
Zinc	15 %
Copper	15 %
Selenium	15 %
Manganese	15 %
Chromium	15 %
Molybdenum	15 %

INGREDIENTS:	
WHOLE WHEAT FLOUR, ENRICHED FLOUR (WHEAT FLOUR, NIACIN, REDUCED IRON, THIAMIN MONONITRATE [VITAMIN B1], RIBOFLAVIN [VITAMIN B2], SUGAR, VEGETABLE OIL (SOYBEAN AND PALM OIL WITH TBHQ FOR FRESHNESS), MOLASSES, CONTAINS TWO PERCENT OR LESS OF SALT, CALCIUM CARBONATE, DEXTROSE, BAKING SODA, CINNAMON, SOY LECITHIN, CORNSTARCH, NATURAL AND ARTIFICIAL FLAVOR (CONTAINS MILK), PROPYLENE GLYCOL ALGinate, MANGANIDE, BHT FOR FRESHNESS, VITAMIN A PALMITATE, PYRIDOXINE HYDROCHLORIDE (VITAMIN B6), THIAMIN HYDROCHLORIDE (VITAMIN B1), RIBOFLAVIN (VITAMIN B2).	
ALLERGEN INFORMATION:	
CONTAINS WHEAT, SOY, AND MILK INGREDIENTS.	
OTHER REQUIRED STATEMENTS:	
Percent Daily Values are based on a diet of other people's misadventures.	
Calories 220	
Total Fat 7g	
Saturated Fat 2g	
Trans Fat 0g	
Polyunsaturated Fat 0g	
Monounsaturated Fat 0g	
Cholesterol 0mg	
Sodium 230mg	
Potassium 37mg	
Total Carbohydrate 2g	
Dietary Fiber 0g	
Soluble Fiber 0g	
Insoluble Fiber 0g	
Sugars 12g	
Sugar Alcohol 0g	
Other Carbohydrate 0g	
Protein 4g	
Vitamin A 15%	
Vitamin C 15%	
Calcium 15%	
Vitamin D 15%	
Vitamin E 15%	
Vitamin K 25%	
Iron 20%	
Niacin 15%	
Vitamin B6 15%	
Folic Acid 15%	
Vitamin B12 15%	
Biotin 15%	
Phosphorus 15%	
Magnesium 15%	
Zinc 15%	
Copper 15%	
Selenium 15%	
Manganese 15%	
Chromium 15%	
Molybdenum 15%	

Calories	430
Calories from fat	120
Total fat	13.4 g
Saturated fat	4.4 g
Trans fat	0.2 g
Polyunsaturated fat	4.9 g
Monounsaturated fat	2.9 g
Cholesterol	0 mg
Sodium	452 mg
Potassium	202 mg
Total carbohydrate	73.7 g
Dietary fiber	4.9 g
Soluble fiber	1.1 g
Insoluble fiber	3.8 g
Sugars	24.9 g
Sugar alcohols	NA mg
Protein	7.4 g
Vitamin A	1500 IU
Vitamin C	0 mg
Calcium	300.0 mg
Iron	3.5 mg
Vitamin D	NA IU
Vitamin E	1 IU
Vitamin K	0.75 mg
Niacin	0.68 mg
Vitamin B6	0.50 mg
Folic acid	71 mcg
Vitamin B12	NA mcg
Phosphorus	151 mg
Magnesium	54 mg
Zinc	1.2 mg
Copper	NA mcg
Manganese	NA mcg
Selenium	NA mcg
Molybdenum	NA mcg
Chromium	NA mcg
Ash	2.0 %

NA = Database values for the nutrient do not exist or are incomplete.

Net Weight 100g

Container 100

000 38000 24518 3

Case

GTIN/UPC Code

Type of Package

Net Weight

Servings Per Container

Julia M. Jurinec, MS
Sr. Director, Nutrition Labeling & Regulatory Compliance
Kellogg Company

Product information can change at any time.
Always refer to product packaging for current nutrition and ingredient information.

Product Name	Crunchmania - Bite Size French Toast
Flavor Description	Naturally and Artificially Flavored
Brand	KEEBLER

Date Created	01-08-15
NLI #	09642
Kosher Status	OU-D
Product of	U.S.A

USDA Ounce Equivalents of Grain per Serving	2
USDA Ounce Equivalents of Meat/Meal Alternative	
Carbohydrates	2 1/2
Fat	1
Protein	Free
Whole Grains (g/serving)	17

Serving Size	1 Package
Serving Size g	50
Serving Size oz	
Amount Per Serving	210
Calories	
Calories from Fat	60

Total Fat	6g	12%
Saturated Fat	2g	4%
Trans Fat	0g	0%
Monounsaturated Fat	0g	0%
Polysaturated Fat	0g	0%
Cholesterol	0mg	0%
Sodium	220mg	4%
Potassium	220mg	4%
Total Carbohydrate	37g	76%
Dietary Fiber	3g	6%
Soluble Fiber	0g	0%
Insoluble Fiber	13g	27%
Sugars	0g	0%
Sugar Alcohol	0g	0%
Other Carbohydrate	4g	8%

Protein	4g	8%
Vitamin A	15%	
Vitamin C	0%	
Calcium	15%	
Iron	8%	
Vitamin D	15%	
Vitamin E	15%	
Vitamin K	25%	
Thiamin	25%	
Riboflavin	20%	
Niacin	15%	
Vitamin B6	15%	
Folic Acid	20%	
Vitamin B12	20%	
Biotin	20%	
Pantothenic Acid	20%	
Phosphorus	20%	
Iodine	20%	
Magnesium	20%	
Zinc	20%	
Selenium	20%	
Copper	20%	
Manganese	20%	
Chromium	20%	
Molybdenum	20%	

ALLERGEN INFORMATION:	CONTAINS WHEAT, MILK AND SOY INGREDIENTS.
-----------------------	---

Other Required Statements:	
----------------------------	--

Percent Daily Values are based on a diet of other people's misadventures.	
Calories	2,500
Total Fat	65g
Salt Fat	20g
Cholesterol	300mg
Sodium	2,400mg
Potassium	3,500mg
Total Carbohydrate	375g
Dietary Fiber	25g
Protein	50g

Calories per gram: Fat 9 • Carbohydrate 4 • Protein 4	
Product information can change at any time.	
Always refer to product packaging for current nutrition and ingredient information.	
Julia M. Jurinec, MS Sr. Director, Nutrition Labeling & Regulatory Compliance Kellogg Company	

GTIN/UPC Code	000 36000 24520 6
Type of Package	Pouch
Net Weight	1.76oz (50g)
Servings Per Container	1

Nutrient Contents Per 100g	
Calories	426
Carbohydrates from fat	116
Total Fat	12.9g
Saturated Fat	4.2g
Monounsaturated Fat	2.8g
Polysaturated Fat	4.8g
Trans Fat	0.2g
Cholesterol	0
Sodium	433mg
Potassium	205mg
Folic Acid	73.7g
Vitamin B12	5.0g
Pantothenic Acid	1.1g
Soluble Fiber	3.8g
Insoluble Fiber	3.8g
Sugars	25.6g
Sugar Alcohols	NAg
Protein	7.5g
Copper	NAmg
Manganese	NAmg
Selenium	NAmcg
Molybdenum	NAmcg
Ash	2.4%

WHOLE WHEAT FLOUR, ENRICHED FLOUR (WHEAT FLOUR, ENRICHED FLOUR, REDUCED IRON, THIAMIN MONONITRATE (VITAMIN B1), RIBOFLAVIN (VITAMIN B2), FOLIC ACID), SUGAR, SOYBEAN AND PALM OIL, MOLASSES, CONTAINS TWO PERCENT OR LESS OF CALCIUM CARBONATE, SALT, DEXTROSE, BAKING SODA, CINNAMON, SOY LECITHIN, NATURAL AND ARTIFICIAL FLAVORS (CONTAINS MILK), VITAMIN A PALMITATE, BHT FOR FRESHNESS, NIACINAMIDE, PYRIDOXINE HYDROCHLORIDE (VITAMIN B6), THIAMIN HYDROCHLORIDE (VITAMIN B1), RIBOFLAVIN (VITAMIN B2).

2017-18 School Year

K-12 PRODUCT GUIDE

FOODSERVICE

Post

36.63.304
35.63.301
36.03.306
30.03.306
30.03.306
30.03.309
30.03.310
30.03.311
30.03.314

K-12 PRODUCT GUIDE

Product	Weight	Price	Unit Price
Frosted Shredded Wheat	108-84912-27177-5	NEW	108-84912-27177-5
Frosted Shredded Wheat Blueberry	108-84912-27154-6	NEW	108-84912-27154-6
Frosted Shredded Wheat Strawberry	108-84912-27150-8	NEW	108-84912-27150-8
Alpha Bits	108-84912-27176-8	NEW	108-84912-27176-8
Honey Bunches of Oats	108-84912-27231-5	NEW	108-84912-27231-5
Honey Bunches of Oats Whole Grain Vanilla	108-84912-27314-4	NEW	108-84912-27314-4
Cinnamon Toasters	100-42400-03915-7	NEW	100-42400-03915-7
Marshmallow Maltesers	100-42400-01615-8	NEW	100-42400-01615-8
Scooters	100-42400-27164-9	NEW	100-42400-27164-9
Scooters	100-42400-08655-7	NEW	100-42400-08655-7
Honey Scooters	100-42400-21828-6	NEW	100-42400-21828-6
Bran Flakes	100-42400-00715-6	NEW	100-42400-00715-6
Raisin Bran	100-42400-04515-8	NEW	100-42400-04515-8
Honey Graham Toasters	100-42400-04515-8	NEW	100-42400-04515-8
Frosted Shredded Wheat	108-84912-27149-2	NEW	108-84912-27149-2
Frosted Shredded Wheat Blueberry	108-84912-27163-8	NEW	108-84912-27163-8
Frosted Shredded Wheat Strawberry	108-84912-27162-1	NEW	108-84912-27162-1
Honey Bunches of Oats	108-84912-27313-7	NEW	108-84912-27313-7
Honey Bunches of Oats Whole Grain Vanilla	108-84912-27312-0	NEW	108-84912-27312-0
Cinnamon Toasters	100-42400-13820-1	NEW	100-42400-13820-1
Marshmallow Maltesers	100-42400-05940-7	NEW	100-42400-05940-7
Honey Scooters	100-42400-08662-2	NEW	100-42400-08662-2
Raisin Bran	100-42400-06854-6	NEW	100-42400-06854-6

[illegible]

K-12 PRODUCT GUIDE

UPC	PRODUCT	CASE PACK	OZ EQ GRAIN	KOSHER STATUS	SERVING WEIGHT(g)	TOTAL CALORIES	TOTAL FAT (g)	TOTAL FAT (%DV)	SAT FAT (g)	SAT FAT (%DV)	CHOLESTROL (mg)	SODIUM (mg)	TOTAL CARBS (g)	DIETARY FIBER (g)	DIETARY FIBER (%DV)	SUGAR (g)	PROTEIN (g)
100-42400-09816-1	RAISIN BRAN	20Z EQ	59.0 200 1.0 2.0 0 0 0	①	6/36 oz	8/36 oz	55.0 190 1.0 2.0 0 0 0	2.0	0	0	0	10	45	6	24	11	5
100-42400-23792-8	Blueberry Mini Spooners	20Z EQ	55.0 190 1.0 2.0 0 0 0		8/36 oz	6/36 oz	55.0 190 1.0 2.0 0 0 0	2.0	0	0	0	10	45	6	24	11	5
100-42400-09826-0	Frosted Mini Spooners	20Z EQ	55.0 190 1.0 2.0 0 0 0		6/36 oz	8/36 oz	55.0 190 1.0 2.0 0 0 0	2.0	0	0	0	10	45	6	24	11	5
100-42400-23793-5	Strawberry Cream Mini Spooners	20Z EQ	55.0 190 1.0 2.0 0 0 0		8/36 oz	6/30 oz	30.0 130 3.5 5.0 0.5 3 0	5.0	0.5	3	0	140	24	1	4	10	1
100-42400-09831-7	Cinnamon Toasters	10Z EQ	30.0 120 1.0 2.0 0 0 0	①P	4/42 oz	4/34 oz	30.0 120 2.0 3.0 0 0 0	3.0	0	0	0	150	22	3	12	0	4
100-42400-09821-5	Marshmallow Matleys	10Z EQ	30.0 120 1.0 2.0 0 0 0		4/42 oz	4/45 oz	29.0 110 0.5 1.0 0 0 0	1.0	0	0	0	200	24	5	20	5	3
100-42400-21865-1	Bran Flakes	10Z EQ	29.0 110 0.5 1.0 0 0 0	①	4/45 oz	6/32 oz	30.0 120 3.0 5.0 0 0 0	5.0	0	0	0	260	23	1	4	10	2
100-42400-09833-1	Honey Graham Toasters	10Z EQ	30.0 120 3.0 5.0 0 0 0	①P	6/32 oz	4/44 oz	30.0 120 1.5 2.0 0 0 0	2.0	0	0	0	210	24	2	8	9	3
100-42400-09818-5	Honey Scooters	10Z EQ	30.0 120 1.5 2.0 0 0 0	①	4/44 oz	4/50 oz	22.0 90 1.5 2.0 0.2 1 0	2.0	0.2	1	0	25	17	1	5	6	2
100-42400-07485-1	Cinnamon Granola	10Z EQ	22.0 90 1.5 2.0 0.2 1 0	①P	4/50 oz	48/1 oz	28.0 100 2.0 3.0 0 0 0	3.0	0	0	0	90	19	3	12	0	4
100-42400-04833-3	Regular Instant Oats	10Z EQ	28.0 100 2.0 3.0 0 0 0	①	48/1 oz	48/1.51 oz	43.0 160 2.0 3.0 0 0 0	3.0	0	0	0	240	33	3	12	13	4
100-42400-04830-2	Maple & Brown Sugar Instant Oats	1.50Z EQ	43.0 160 2.0 3.0 0 0 0	①	48/1.51 oz	48/1.23 oz	35.0 130 1.5 2.0 0 0 0	2.0	0	0	0	170	27	3	12	11	3
100-42400-04831-9	Apples & Cinnamon Instant Oats	1.250Z EQ	35.0 130 1.5 2.0 0 0 0	①	48/1.23 oz	12/42 oz	40.0 150 3.0 5.0 0.5 3 0	5.0	0.5	3	0	0	27	4	16	<1	5
100-42400-04650-6	Quick Oats Tube	1.250Z EQ	40.0 150 3.0 5.0 0.5 3 0	①	12/42 oz	12/42 oz	40.0 150 3.0 5.0 0.5 3 0	5.0	0.5	3	0	0	27	4	16	<1	5
100-42400-04651-3	Old Fashioned Oats Tube	1.250Z EQ	40.0 150 3.0 5.0 0.5 3 0	①	12/42 oz												

OATMEAL

BULK CEREAL

K-12 PRODUCT DESCRIPTIONS

PRODUCT + DESCRIPTION AVAILABLE IN

READY TO EAT CEREAL

Frosted Shredded Wheat 1oz Bowl 2oz Bowl

Lightly frosted shredded wheat biscuits. Excellent source of 8 vitamins and minerals. No artificial flavors or certified synthetic colors.

Frosted Shredded Wheat Blueberry 1oz Bowl 2oz Bowl

Lightly frosted shredded wheat biscuits with natural blueberry flavor and freeze dried granulated blueberries. Excellent source of 8 vitamins and minerals. No artificial flavors or certified synthetic colors.

Frosted Shredded Wheat Strawberry 1oz Bowl 2oz Bowl

Lightly frosted shredded wheat biscuits with a strawberry cream flavor. Excellent source of 8 vitamins and minerals. No artificial flavors or certified synthetic colors.

Alpha Bits 1oz Bowl

Lightly sweetened whole grain oat cereal with letter-shaped pieces. Contains 11 vitamins and minerals. No artificial flavors or certified synthetic colors.

Honey Bunches of Oats Whole Grain Honey Crunch 1oz Bowl 2oz Bowl

Crispy flakes and crunchy oat clusters with real honey. Provides 12 essential vitamins and minerals.

Honey Bunches of Oats Whole Grain Vanilla 1oz Bowl 2oz Bowl

Whole grain flakes with crunchy oat clusters and real vanilla. Provides 12 essential vitamins and minerals.

Cinnamon Toastles SPECIAL EDITION 1oz Bowl 2oz Bowl

A lightly pulled, sweetened whole wheat and rice cereal made with real cinnamon. Contains 9 vitamins and minerals & no artificial flavors.

Cinnamon Toastles 1oz Bowl

A lightly pulled, sweetened whole wheat and rice cereal made with real cinnamon. Contains 12 vitamins and minerals & no artificial flavors.

Marshmallow Moteys SPECIAL EDITION 1oz Bowl

A pulled, sweetened toasted oat cereal in donut-shaped pieces with marshmallows. Contains 12 essential vitamins and minerals.

Marshmallow Moteys 1oz Bowl 2oz Bowl

A pulled, sweetened toasted oat cereal in anchor-shaped pieces with marshmallows. Contains 12 essential vitamins and minerals.

Marshmallow Moteys 1oz Bowl 2oz Bowl

A pulled, sweetened whole grain oat cereal in donut-shaped pieces. Contains 13 essential vitamins and minerals. No artificial flavors or certified synthetic colors. NO NUTS.

Honey Scooters 1oz Bowl 2oz Bowl

A pulled, toasted cereal in donut-shaped pieces with real honey. Low fat. colors. NO NUTS.

Honey Scooters 1oz Bowl 2oz Bowl

A pulled, toasted cereal in donut-shaped pieces with real honey. Contains 13 essential vitamins and minerals. No artificial flavors or certified synthetic colors. NO NUTS.

Bran Flakes 1oz Bowl 2oz Bowl

Flakes of whole grain wheat and wheat bran. Contains 8 vitamins and minerals.

AVAILABLE IN

PRODUCT + DESCRIPTION AVAILABLE IN

READY TO EAT CEREAL

Raisin Bran 1oz Bowl 2oz Bowl

Flakes of whole grain wheat and wheat bran with raisins. Contains 8 vitamins and minerals.

Honey Graham Toasters 1oz Bowl 2oz Bowl

A honey graham cereal made from whole grain wheat and corn meal. Contains 12 vitamins and minerals per serving. No artificial flavors or certified synthetic colors.

Cinnamon Granola 1oz Bowl 2oz Bowl

Chunks of rolled oats and crisp rice with real cinnamon. No artificial flavors or certified synthetic colors.

Toasty O's 1oz Bowl

A pulled, toasted cereal in donut-shaped pieces. Contains 13 essential vitamins and minerals. No artificial flavors or certified synthetic colors.

Frosted Mini Spooners 1oz Bowl 2oz Bowl

Lightly frosted shredded wheat biscuits. Excellent source of 8 vitamins and minerals.

Blueberry Mini Spooners 1oz Bowl 2oz Bowl

Lightly frosted shredded wheat biscuits with natural blueberry flavor and freeze dried granulated blueberries. Excellent source of 8 vitamins and minerals.

Strawberry Cream Mini Spooners 1oz Bowl 2oz Bowl

Lightly frosted shredded wheat biscuits with a strawberry cream flavor. Excellent source of 8 vitamins and minerals.

OATMEAL

Regular Instant Oats 1oz Bowl 2oz Bowl

Whole Grain Rolled Oats. Contains 9 essential vitamins and minerals. No artificial flavors.

Maple & Brown Sugar Instant Oats 1oz Bowl 2oz Bowl

Whole Grain Rolled Oats. Contains 9 essential vitamins and minerals. Maple & Brown Sugar Flavored. No artificial flavors.

Apples & Cinnamon Instant Oats 1oz Bowl 2oz Bowl

Whole Grain Rolled Oats with real apples and cinnamon. Contains 9 essential vitamins and minerals. No artificial flavors or certified synthetic colors.

Quick Oats Tube 1oz Bowl 2oz Bowl

100% Whole Grain Rolled Oats. Quick cooking rolled oats. May be prepared on the stove top or in the microwave.

Old Fashioned Oats Tube 1oz Bowl 2oz Bowl

100% Whole Grain Rolled Oats. Old Fashioned rolled oats. May be prepared on the stove top or in the microwave.

Oats Tube 1oz Bowl 2oz Bowl

Oats Tube 1oz Bowl 2oz Bowl

AVAILABLE IN

Kellogg's® Rice Krispies Treats® Mini Squares Made With Whole Grain

Another way to enjoy the creamy, crispy marshmallow squares treats in a mini-size that's fun to eat and made with brown rice and whole grains.

Product Type Rice Krispies Treats	Allergen Information CONTAINS MILK AND SOY INGREDIENTS
Product Category	Dietary Exchange Per Serving 1/2 Carbohydrates
UPC Code 3800014540	Kosher Status Not Certified
Servings/Case 600 ct	Grain Ounce Equivalents 0.25
Sizes 0.42 oz	Shelf Life 240 days
Format Single Serve	Country of Origin
Gross Weight 18.310	



Date Printed: 05/13/2019

Kellogg's® Rice Krispies Treats® Mini Whole Grain

Nutrition Facts Serv. Size: 1 Bar (12g), Amount Per Serving:
Calories 50, **Fat Cal.** 10, **Total Fat** 1g (2% DV), **Sat. Fat** 0g (0% DV),
Trans Fat 0g, **Cholest.** 0mg (0% DV), **Sodium** 45mg (2% DV), **Total**
Carb. 9g (3% DV), **Fiber** 0g (0% DV), **Sugars** 3g, **Protein** 0g, **Vitamin A**
(0% DV), **Vitamin C** (0% DV), **Calcium** (0% DV), **Iron** (2% DV), **Thiamin**
(10% DV), **Riboflavin** (4% DV), **Niacin** (2% DV), **Vitamin B₆** (8% DV).
Percent Daily Values (DV) are based on 2,000 calorie diet.

INGREDIENTS: WHOLE GRAIN BROWN RICE, CORN SYRUP, FRUCTOSE, SOYBEAN
AND PALM OIL WITH TBHQ FOR FRESHNESS, SUGAR, CORN SYRUP SOLIDS,
CONTAINS 2% OR LESS OF GLYCERIN, DEXTROSE, SALT, GELATIN, NATURAL
AND ARTIFICIAL BUTTER FLAVOR (CONTAINS MILK), DATEM, NATURAL AND
ARTIFICIAL MARSHMALLOW FLAVOR, ACETYLATED MONOGLYCERIDES, IRON, BHT
(PRESERVATIVE), NIACINAMIDE, VITAMIN B₁ (THIAMIN HYDROCHLORIDE), VITAMIN
B₆ (PYRIDOXINE HYDROCHLORIDE), VITAMIN B₂ (RIBOFLAVIN), SOY LECITHIN.
CONTAINS MILK AND SOY INGREDIENTS.

NLI#12646

Kellogg's® Rice Krispies Treats® Chocolatey Chip Made With Whole Grain

Chocolatey Chip crispy marshmallow squares made from puffed, oven-roasted whole grain rice cereal. Whole grain first ingredient. Meets the requirements for 1 oz. eq of grain. No high fructose corn syrup.



Product Type
Grab 'n Go Snacks

Allergen Information
CONTAINS SOY AND MILK INGREDIENTS.

Product Category

Dietary Exchange Per Serving

UPC Code
3800014567

Kosher Status
Not Certified

Date Printed: 05/13/2019

Servings/Case
80 ct

Grain Ounce Equivalents
1

Sizes
1.59 oz

Shelf Life
240 days

Format
Single Serve

Country of Origin
Distributed in USA

Gross Weight
9.64

Kellogg's® Rice Krispies Treats® Whole Grain Chocolatey Chip

Nutrition Facts	
Serving size	1 Bar (45g)
Amount per serving	
Calories	190
% Daily Value*	
Total Fat 5g	6%
Saturated Fat 2g	10%
Trans Fat 0g	
Cholesterol 0mg	0%
Sodium 150mg	7%
Total Carbohydrate 34g	12%
Dietary Fiber <1g	3%
Total Sugars 14g	
Includes 14g Added Sugars	28%
Protein 2g	
Vitamin D 0mcg 0%	Calcium 0mg 0%
Iron 2.5mg 10%	Potassium 70mg 0%
Thiamin 25%	Niacin 6%
Vitamin B ₆ 4%	Folate 10mcg DFE 2% (5mcg folic acid)
Pantothenic Acid 4%	
*The % Daily Value (DV) tells you how much a nutrient in a serving of food contributes to a daily diet. 2,000 calories a day is used for general nutrition advice.	
Ingredients: Whole grain brown rice, corn syrup, fructose, chocolatey flavored chips (sugar, palm and palm kernel oil, cocoa processed with alkali, soy lecithin, natural flavor, milk, salt), vegetable oil (soybean and palm oil with TBHQ for freshness), sugar, corn syrup solids.	
Contains 2% or less of vegetable glycerin, dextrose, salt, gelatin, natural and artificial flavors, DATEM, acetylated monoglycerides, reduced iron, vitamin B ₁ (thiamin hydrochloride), niacinamide, vitamin B ₆ (pyridoxine hydrochloride), folic acid, calcium pantothenate, soy lecithin, BHT for freshness.	
CONTAINS SOY AND MILK INGREDIENTS.	

NLI#14434

Official Nutrition Label Information

Bug Bites Cinnamon Graham Crackers

Kellogg Company - Proprietary

Product Name	Bug Bites Cinnamon Graham Crackers
Flavor Descriptor	
NLI Description	1 oz - Production
Brand	KEEBLER



Date Created	01-07-15
NLI #	07621
Kosher Status	OK - D
Product of	U.S.A.

USDA Ounce Equivalents of Grain per Serving			
1			
USDA Ounce Equivalents of Meat/Meat Alternate			
	Carbohydrates	Fat	Protein
	1 1/2	1/2	
Whole Grains (g/serving)			
9			

Serving Size	1 Package	
Serving Size g	28	
Serving Size oz		
Amount Per Serving		
Calories	120	
Calories from Fat	35	
	% Daily Value*	% Daily Value*
Total Fat	3.5 g 5 %	g %
Saturated Fat	1 g 5 %	g %
Trans Fat	0 g	g
Polyunsaturated Fat	g	g
Monounsaturated Fat	g	g
Cholesterol	0 mg 0 %	mg %
Sodium	115 mg 5 %	mg %
Potassium	mg %	mg %
Total Carbohydrate	21 g 7 %	g %
Dietary Fiber	1 g 5 %	g %
Soluble Fiber	g	g
Insoluble Fiber	g	g
Sugars	8 g	g
Sugar Alcohol	g	g
Other Carbohydrate	g	g
Protein	2 g %	g %
Vitamin A	10 %	%
Vitamin C	0 %	%
Calcium	10 %	%
Iron	4 %	%
Vitamin D	%	%
Vitamin E	%	%
Vitamin K	%	%
Thiamin	%	%
Riboflavin	%	%
Niacin	%	%
Vitamin B6	%	%
Folic Acid	%	%
Vitamin B12	%	%
Biotin	%	%
Pantothenic Acid	%	%
Phosphorus	%	%
Iodine	%	%
Magnesium	%	%
Zinc	%	%
Selenium	%	%
Copper	%	%
Manganese	%	%
Chromium	%	%
Molybdenum	%	%

Ingredients:

WHOLE WHEAT FLOUR, ENRICHED FLOUR (WHEAT FLOUR, NIACIN, REDUCED IRON, THIAMIN MONONITRATE [VITAMIN B1], RIBOFLAVIN [VITAMIN B2], FOLIC ACID), SUGAR, VEGETABLE OIL (SOYBEAN AND PALM OIL WITH TBHQ FOR FRESHNESS), HONEY, CONTAINS TWO PERCENT OR LESS OF CALCIUM CARBONATE, SALT, BAKING SODA, CINNAMON, MALTODEXTRIN, SOY LECITHIN, VITAMIN A PALMITATE, BHT FOR FRESHNESS.

ALLERGEN INFORMATION:

CONTAINS WHEAT AND SOY INGREDIENTS

Other Required Statements:

*Percent Daily Values are based on a 2,000 calorie diet. Your daily values may be higher or lower depending on your calorie needs.

	Calories:	2,000	2,500	Print value if "Y"
Total Fat	Less than	65g	80g	Y
Sat. Fat	Less than	20g	25g	Y
Cholesterol	Less than	300mg	300mg	Y
Sodium	Less than	2,400mg	2,400mg	Y
Potassium		3,500mg	3,500mg	
Total Carbohydrate		300g	375g	Y
Dietary Fiber		25g	30g	Y
Protein		50g	65g	

Calories per gram: Fat 9 • Carbohydrate 4 • Protein 4

Product information can change at any time.
Always refer to product package for current nutrition and ingredient information.

Julia M. Jursinic, MS
Sr. Director, Nutrition Labeling & Regulatory Compliance
Kellogg Company

Nutrient Contents Per 100g			
Calories	433	Vitamin A	1786 IU
Calories from fat	120	Vitamin C	0 mg
Total Fat	13.3 g	Calcium	357.1 mg
Saturated Fat	4.2 g	Iron	3.0 mg
Monounsaturated Fat	2.9 g	Vitamin D	N/A IU
Polyunsaturated Fat	5.0 g	Vitamin E	1 IU
Trans Fat	0.2 g	Thiamin	0.33 mg
Cholesterol	0 mg	Riboflavin	0.20 mg
Sodium	412 mg	Niacin	3.7 mg
Potassium	165 mg	Vitamin B6	0.12 mg
Total Carbohydrate	75.0 g	Folic Acid	64 mcg
Dietary Fiber	4.7 g	Vitamin B12	N/A mcg
Soluble Fiber	1.0 g	Pantothenic Acid	NA mg
Insoluble Fiber	3.7 g	Phosphorus	145 mg
Sugars	29.8 g	Magnesium	52 mg
Sugar Alcohols	NA g	Zinc	1.1 mg
Protein	7.0 g	Copper	NA mg
NA = Database values for the nutrient do not exist or are incomplete.		Manganese	NA mg
		Selenium	NA mcg
		Moisture	3.0 %
		Ash	1.7 %

GTIN/UPC Code	Type of Package	Net Weight	Servings Per Container
000 30100 55856 9	Pouch	1oz (28g)	1
000 30100 55644 2	Case	13lb 2oz (5.8kg)	210

Pioneer® Enriched Yellow Corn Meal

Product Code 41122

25# PIO YLW CRN ML

UPC 10041460411224

100% whole ground bolted cornmeal (enriched). This product is manufactured in accordance with Food and Drugs: Code of Federal Regulation (CFR) Title 21, Part 110: Current Good Manufacturing in manufacturing, packing or holding of human food.

Shelf Life 360 days Ambient
Recommended Storage Temperature: 50 - 90°F
Unit weight 25.00 lbs
Pack 1 / case

Case Dimensions

(L) x (W) x (D) = (Cube)
Pallet 7 tie 12 high = 84 total
Case Wt (gross) 25.5 lbs **(net)** 25.0 lbs
Yield Contingent upon specific recipe used

Nutrition Facts

Serving Size 1/4 cup (30 g)
 Servings Per Container 378

Amount Per Serving

Calories 110 **Calories from Fat 0**

% Daily Value*

Total Fat 0g **0%**

Saturated Fat 0g **0%**

Trans Fat 0g

Cholesterol 0mg **0%**

Sodium 0mg **0%**

Total Carbohydrate 24g **8%**

Dietary Fiber less than 1g **3%**

Sugars 0g

Protein 2g

Vitamin A 0% • **Vitamin C 0%**

Calcium 0% • **Iron 4%**

Thiamin 10% • **Riboflavin 6%**

Niacin 6% • **Folate 15%**

*Percent Daily Values are based on a 2,000 calorie diet. Your daily values may be higher or lower depending on your calorie needs:

	Calories	2,000	2,500
Total Fat	Less Than	65g	80g
Saturated Fat	Less Than	20g	25g
Cholesterol	Less Than	300mg	300 mg
Sodium	Less Than	2,400mg	2,400mg
Total Carbohydrate		300g	375g
Dietary Fiber		25g	30g

Calories per gram:
 Fat 9 • Carbohydrate 4 • Protein 4

Ingredient Declaration

INGREDIENTS: ENRICHED YELLOW CORN MEAL (YELLOW CORN MEAL, NIACIN, REDUCED IRON, THIAMIN MONONITRATE, RIBOFLAVIN, FOLIC ACID).

MAY CONTAIN: WHEAT, MILK, EGG, SOY

Pioneer® Enriched Yellow Corn Meal

Product Code 41122

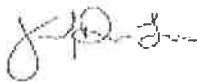
25# PIO YLW CRN ML

UPC 10041460411224

Preparation Instructions

No specific preparation procedures are needed for this product.

Approved by :



(Juan DeLeon)

Title: Director Corporate QA

7/27/2015

This product is manufactured in accordance with Food and Drugs: Code of Federal Regulation (CFR) Title 21, Part 110: Current Good Manufacturing in manufacturing, packing or holding of human food.

This product is manufactured in a facility that uses shared equipment to handle products containing wheat, milk, egg and soy.

Product Code	UPC	Kosher	Description	Pack Size	Net Weight	Gross Weight
77132	10761720071324	OU	ARGO® CORN STARCH	24/1 LB	24 LB	27 LB



Nutrition Facts	
Serving Size: 1 TBSP (8g)	
Servings Per Container: 1344	
Amount per Serving	
Calories: 30	Calories from Fat:
% Daily Value*	
Total Fat: 0 g	%
Saturated Fat: 0 g	%
Trans Fat: g	
Cholesterol: 0 mg	%
Sodium: 0 mg	%
Total Carbohydrate: 7 g	%
Dietary Fiber: 0 g	%
Sugars: g	
Protein: g	
Vitamin A: %	Vitamin C: %
Calcium: %	Iron: %
*Percent Daily Values are based on a 2000 calorie diet. Your daily values may be higher or lower depending on your calorie needs.	

This is a representation of the nutrition label. The actual nutrition label on the product may vary slightly.

ARGO® CORN STARCH

General Description

Argo Corn Starch has been the secret ingredient for generations of American chefs. Naturally tasteless and colorless, corn starch allows the true flavor of food to come through without alteration. Argo's pure corn starch is a kitchen staple for every chef.

Benefits Of Using This Product

For over a century Argo has led the way in premium product quality, innovation and customer support. Chefs value the consistent quality and thickening ability that Argo Corn Starch offers.

Serving Suggestions

Use Argo Corn Starch to thicken any dish or sauce where a clear, glossy sauce is desirable. Ideal for fruit sauces, fruit pies, clear soups and puddings. Use corn starch to make lighter crusts or pastries. Argo Corn Starch is essential for thickening sauces for Asian stir-frys or sauces.

Preparation and Cooking Instructions

Argo Corn Starch has twice the thickening power of flour. When making recipe substitutions, use only half the amount of corn starch compared to flour, e.g. if the recipe called for 1 cup flour, use 1/2 cup Argo Corn Starch. Always mix Argo Corn Starch with a cold liquid before adding to hot liquids to prevent lumping. For maximum thickening and clarity, bring a cornstarch thickened mixture to a full boil. Argo Corn Starch is gluten-free and can be a valuable tool in the kitchen for modifying recipes for customers who need gluten-free dishes.

Master Pack

Pallet Tie: 5	Pallet High: 10	Pallet Extra:	Total Pallet: 50
Description:	1 Case 24/1 LB Box	Size: 1 LB	
Gross Weight: 27 LB	Net Weight: 24 LB	Volume: 0.77 CU FT	
Length: 16.25 IN	Width: 11.88 IN	Height: 6.88 IN	