

Technical Evaluation Committee (TEC) Questionnaire

Instructions

- The Technical Evaluation Committee (TEC) Questionnaire shall be used for professional services related to architecture, engineering, or survey projects.
- **The TEC Questionnaire should be completely filled out. Complete and attach ALL sections. Insert “N/A” or “None” if a section does not apply or if there is no information to provide.**
- Questionnaire must be signed by an authorized representative of the Firm. Failure to sign the questionnaire shall result in disqualification of proposer pursuant to J.P. Code of Ordinances Sec. 2-928.
- All subcontractors must be listed in the appropriate section of the Questionnaire. Each subcontractor must provide a complete copy of the TEC Questionnaire, applicable licenses, and any other information required by the advertisement. Failure to provide the subcontractors' complete questionnaire(s), applicable licenses, and any other information required by the advertisement shall result in disqualification of proposer pursuant to J.P. Code of Ordinances Sec. 2-928.
- If additional pages are needed, attach them to the questionnaire and include all applicable information that is required by the questionnaire.

TEC Professional Services Questionnaire

A. Project Name and Advertisement Resolution Number:
Engineering Services for Drainage Projects in Jefferson Parish
SOQ 24-015

B. Firm Name & Address:



Duplantis Design Group, PC
One Galleria Blvd., Suite 1506
Metairie, LA 70001

C. Name, title and contact information of Principal, as defined in Section 2-926 of the Jefferson Parish Code of Ordinances, who is a registered, licensed architect, professional engineer, or surveyor in the State of Louisiana:

Scott Tabary, PE - Professional in Charge of Project
Civil Engineering Lead + Partner
One Galleria Blvd., Suite 1506, Metairie, LA 70001
504.434.6565
stabary@ddgpc.com

D. Name and contact information of employee who is a registered and licensed architect, professional engineer, or surveyor in the State of Louisiana in the applicable discipline. A subcontractor may be substituted here only if the advertised Project requires more than one discipline.

Scott Tabary, PE - Professional in Charge of Project
Civil Engineering Lead + Partner
One Galleria Blvd., Suite 1506, Metairie, LA 70001
504.434.6565
stabary@ddgpc.com

E. Please provide the number of employees whose primary function corresponds with each category:

<u>22</u> Administrative	___ Estimators	___ Specification Writers
<u>9</u> Architects (Licensed)	___ Geologists	___ Structural Engineers
___ Chemical Engineers	___ Geotechnical Engineers	___ Graduate Engineers
<u>26</u> Civil Engineers	___ Interior Designers	<u>28</u> Project Managers
<u>5</u> Construction Inspectors	<u>4</u> Landscape Architects	___ Clerical
___ Ecologists	<u>2</u> Land Surveyor	<u>1</u> Grant/Funding Specialist
___ Electrical Engineers	___ Mechanical Engineers	___ Sanitary Engineers
<u>18</u> Engineer Intern	___ Environmental Engineers	
<u>3</u> Professional Land Surveyors		

Other: 24 Survey Crew 2 GIS 170 TOTAL
2 Environmental Scientists 24 Drafters

F. Is this submittal by a JOINT-VENTURE? Please check:

☐

YES

☒

NO

If marked "No" skip to Section I. "Yes" completed Sections G-H.

TEC Professional Services Questionnaire


G. If submittal is by JOINT-VENTURE, list the firms participating and outline specific areas of responsibility (including administrative, technical, and financial) for each firm. Please attach additional pages if necessary.

1. N/A

2. N/A

H. Has this JOINT-VENTURE previously worked together? Please check: Yes_____ No _____

I. List all subcontractors anticipated for this Project. Please note that all subcontractors must submit a fully completed copy of this questionnaire, applicable licenses, and any other information required by the advertisement. See Jefferson Parish Code of Ordinances, Sec. 2-928(a)(3). Please attach additional pages if necessary.

Name & Address:	Specialty:	Worked with Firm Before (Yes or No):
 STRATUM ENGINEERING, LLC Stratum Engineering, LLC 585 Johnny F. Smith Ave, Slidell, LA 70460	Geotechnical Engineering	Yes, Stratum Engineering, LLC has worked with DDG before.

J. Please specify the total number of support personnel that may assist in the completion of this Project: 10

TEC Professional Services Questionnaire

PROFESSIONAL IN CHARGE OF PROJECT:
Name & Title:
Scott Tabary, PE - Professional in Charge of Project Civil Engineering Lead + Partner
Project Assignment:
Professional in Charge of the Project
Name of Firm with which associated:
Duplantis Design Group, PC
Years' experience with this firm:
14 Years
Education: Degree(s)/Year/Specialization:
Bachelor of Science in Civil Engineering, 2010 - Louisiana State University
Active registration: Year first registered/discipline:
Licensed in 2016 / Registered Professional Engineer / Civil Engineering Louisiana, #40541
Other experience and qualifications relevant to the proposed Project:
<p>St. Tammany Parish Gov't - Program Management OCD/CDBG Drainage</p> <ul style="list-style-type: none"> - Abita River Sub Basin Drainage Improvement - Labarre St Drainage Improvements - Cypress Bayou Intermediate Detention Pond - WestWood Regional Detention Pond Project - Lapin Street, Forest Brook, & Quail Creek Detention Pond & Drainage - Bayou Chinchuba Detention Basin - Ben Thomas Road Detention Pond - Eddins Canal Drainage Improvements <p>Elmwood Revitalization Project</p> <p>Fremaux Towncenter Master Plan and Development</p> <p>Riverchase Master Plan and Development</p> <p>Terrebonne Parish Govt - Hollywood Drainage Improvements</p> <p>Lakeshore Villages (Dog park included)</p> <p>Lafourche Parish Govt - Point Aux Chene Flood Protection Project</p> <p>Lafourche Parish Govt - Timberland Pump Station Improvement Project</p>

SCOTT TABARY, PE

PROFESSIONAL IN CHARGE OF PROJECT

CIVIL ENGINEERING LEAD + PARTNER



Scott leads DDG's civil engineering team in our New Orleans branch office. Born and raised in the New Orleans area, Scott attended Brother Martin High School prior to attending LSU for his civil engineering degree. Scott joined the DDG Covington team in 2011 and quickly exemplified his expertise in hydrology and hydraulics, as well as his client and project management skills. Those attributes, among others, allowed Scott to obtain a leadership position within DDG and is now running the firm's New Orleans office. Scott is currently licensed in Louisiana and Florida. He has experience working on and overseeing projects as well as in preparing site, grading, utility, erosion control, and stormwater quantity and quality plans (including H&H calculations). Scott's experience working on projects spans through the entire project cycle from conceptual site and master planning to re-zoning, annexation, plan production, permitting, and construction observation.

AREAS OF EXPERTISE

- Program + Project Management
- Strategic Planning
- Master Planning
- Public / Private Partnership

RELEVANT PROJECT EXPERIENCE

ST. TAMMANY PARISH GOV'T - PROGRAM MNGT. OCD/CDBG DRAINAGE

- Abita River Sub Basin Drainage Improvement
- Labarre St Drainage Improvements
- Cypress Bayou Intermediate Detention Pond
- WestWood Regional Detention Pond Project
- Lapin Street, Forest Brook, & Quail Creek Detention Pond & Drainage
- Bayou Chinchuba Detention Basin
- Ben Thomas Road Detention Pond
- Eddins Canal Drainage Improvements

ELMWOOD REVITALIZATION PROJECT

Assisted with drainage. Installing green infrastructure to capture stormwater runoff for collection, filtration, and urban heat island reduction. Revitalizing permeable parking, walking paths, outdoor recreation opportunities, and multi-use facilities.

FREMAUX TOWNCENTER MASTER PLAN AND DEVELOPMENT

Master planning of a 350-acre site, construction documents, drainage design, and utility infrastructure.

RIVERCHASE MASTER PLAN AND DEVELOPMENT

Master planning, construction documents, drainage design, road design, and utility infrastructure.

TERREBONNE PARISH GOVT - HOLLYWOOD DRAINAGE IMPROVEMENTS

Analyzed existing stormwater system to determine existing drainage issues. Analyzed and designed proposed drainage improvements.

LAKE SHORE VILLAGES (DOG PARK INCLUDED)

Grading, storm drainage, sewer, water, and roadways. Provided hydraulic modeling services, and proposed conditions to help inform master planning.

AVAILABILITY

Throughout duration of Project

CONTACT

O: 504.434.6565
C: 504.756.0728
F: 985.447.7009
E: stabary@ddgpc.com

EDUCATION

Bachelor of Civil Engineering, 2010,
Louisiana State University

EXPERIENCE

14 Years of Experience

WITH DDG

2011 to Present

CERTIFICATIONS

Licensed Professional
Engineering, LA #40541

TEC Professional Services Questionnaire

KEY PERSON, SPECIALIST, OR INDIVIDUAL CONSULTANT:

Name & Title:

Joseph P. Guillory, PE
Partner

Project Assignment:

Coastal Engineering Lead

Name of Firm with which associated:

Duplantis Design Group, PC

Years' experience with this firm:

11 Years

Education: Degree(s)/Year/Specialization:

Bachelor of Science in Civil Engineering, 2010, University of New Orleans

Active registration: Year first registered/discipline:

Licensed in 2016 / Registered Professional Engineer / Civil Engineering Louisiana, #41131

Other experience and qualifications relevant to the proposed Project:

Program Management OCD/CDBG Drainage Projects
Watershed Management Study
Coastal Management Assistance
Lower W-15 Basin Drainage Improvements
W-14 Basin Drainage Improvements & Fritchie Marsh Hydrologic Restoration
Commonwealth LNG BUDM Marsh Creation
Lake Borgne Marsh Creation - Increment 1 (PO-0180)
Bayou Bonfouca Marsh Creation Project (PO-104)
Cameron Prairie National Wildlife Refuge Marsh Creation
Marsh Creation via W-15 Beneficial Use of Spoil Material

JOSEPH P. GUILLORY, PE

COASTAL ENGINEERING LEAD + PARTNER



Joe has lead our coastal division to exponential growth. Currently, he and his team are designing and managing the construction of the largest marsh creation project, Lake Borgne, implemented by CPRA to date. As a civil and coastal engineer, Joe brings a technical yet practical approach to Louisiana's coastal challenges – land loss, sea level rise, subsidence, storm surge, water management, and erosion. He began his engineering career working for CPRA where he supported the design of thousands of acres of marsh creation. He has helped analyze and develop sound approaches to water management through his involvement with operation plans for Mississippi River diversions as well as his support of the State's 2012 Coastal Master Plan. His understanding and familiarity with Louisiana's coast ensures that his design concepts will work with the natural processes that shape our coast.

AREAS OF EXPERTISE

- Program + Project Management
- Coastal Engineering + Restoration
- Marsh Creation
- Hydrologic Restoration
- Alternative Funding Sources
- Freshwater Diversion
- Benefit Cost Analysis
- Grant Management

RELEVANT PROJECT EXPERIENCE

PROGRAM MANAGEMENT OCD/CDBG DRAINAGE PROJECTS

St. Tammany Parish Government

Project Manager. DDG is assisting St. Tammany Parish staff as the program manager of ten drainage improvement projects throughout the parish. DDG's main objective as program manager is to ensure the success of advancing and delivering each of the projects within the given budgets. DDG coordinated and assisted with land acquisition by setting up and preparing exhibits necessary for the legal department to procure the land in order to implement the drainage projects. Other responsibilities, both past and current, include: Assist with FEMA documentation, organize/manage and assist the wetlands consultant in the preparation of exhibits and drawings necessary to obtain approvals and permits to begin the projects; assistance with the site selection of the project coordination and management of consultants; preparation of overall project schedules and budgets; and oversight of the construction management for seven of the ten projects thus far. Mr. Guillory reviews all documents and plans prepared by engineering consultants.

WATERSHED MANAGEMENT STUDY

St. Tammany Parish, LA

At the request of St. Tammany parish in partnership with cptra, the project team is developing a comprehensive watershed management plan to address both water quality and water quantity through the parish. The study is geared toward modeling and evaluating the existing watersheds throughout the parish and developing potential projects. This will allow planners, regulators and stakeholders insight into various options of protecting and enhancing water quality and addressing water quantity issues. DDG is leading the evaluation of the effects the drainage system has on the water quality in the receiving streams and developing drainage measures that will address water quality deficiencies. DDG is assessing the national waterway features in St. Tammany parish and their interaction with existing manmade infrastructure for water resource management.

COASTAL MANAGEMENT ASSISTANCE

St. Tammany Parish Government

Project Manager/ Lead Engineer. DDG was hired to assist in coastal management and planning, including the preparation of a coastal plan for identifying areas that are in need of protection or restoration. The firm also assisted the parish to identify and secure funding sources for various coastal projects. DDG prepared a menu of coastal projects for St. Tammany Parish's submittal to the State Coastal Master Plan for year 2017, including project fact sheets, map preparation, and project cost estimates. DDG is currently conducting the same process for the 2023 State Coastal Master Plan.

AVAILABILITY

Throughout duration of Project

CONTACT

O: 985.249.6180

F: 985.447.7009

E: jguillory@ddgpc.com

EDUCATION

B.S. Civil Engineering, 2010,
University of New Orleans

EXPERIENCE

10+ Years of Experience

WITH DDG

2013 to Present

CERTIFICATIONS

Licensed Professional
Engineering, LA #41131

TEC Professional Services Questionnaire

KEY PERSON, SPECIALIST, OR INDIVIDUAL CONSULTANT:

Name & Title:

LeeAnn Fitch, MS, PE, CFM
Water Resources Lead + Associate

Project Assignment:

Water Resources Lead

Name of Firm with which associated:

Duplantis Design Group, PC

Years' experience with this firm:

7 Years

Education: Degree(s)/Year/Specialization:

Doctor of Philosophy Civil and Environmental Engineering, Louisiana State University,
Course Completion

MS, Coastal and Ecological
Engineering, 2016

Louisiana State University
BS, Environmental Engineering, 2014
Louisiana State University

Active registration: Year first registered/discipline:

Licensed in 2020 / Registered Professional Engineer / Civil Engineering Louisiana, #44323

Other experience and qualifications relevant to the proposed Project:

French Branch Pond Expansion
Lower W-15 Basin Drainage Improvements
Doubloon Bayou Water Level Monitoring
W-14 Improvements & Fritchie Marsh Hydrologic Restoration
Bayou Bonfouca Regional Detention Pond
Slidell Road Raising
Abita Nursery Regional Drainage Study
Bayou Bonfouca Marsh Creation (Po-0104)
Southwest Ponchatoula Drainage Study
LA 22 Gapping Project
Bayou Manchac Regional Flood Risk Reduction Study
Hydrodynamic Modeling Evaluation of the Laurel Ridge Levee Extension

LEEANN FITCH, MS, PE, CFM

WATER RESOURCES LEAD + ASSOCIATE



LeeAnn has pioneered DDG's water resources services over the last 7 years. She is a licensed professional engineer in the State of Louisiana, Certified Floodplain Manager, and has been a member of ASCE Coast, Oceans, Ports and Rivers Institute (COPRI), Louisiana Floodplain Management Association (LFMA), and Louisiana Water Environment Association (LWEA), and serves as commissioner for the Amite River Basin Drainage and Conservation District. At DDG, she continually expands DDG's expertise in hydrodynamic software, mapping procedures, and data analysis. LeeAnn is a leader and mentor within our firm and continues to exert her passion for reducing flood risk through higher standards and regional improvement solutions throughout the state. She has extensive experience with 1D/2D hydrodynamic models including USACE's HEC-suite, EPA's SWMM / CHI's PCSWMM and DHI's MIKE. She has utilized these models to evaluate existing drainage conditions, conduct flood mapping, and develop solutions to identify and reduce the risk of flooding to communities. She has conducted and led efforts involving in situ monitoring and various data collection methods, master planning, design, permitting, and construction administration.

AVAILABILITY

Throughout duration of Project

CONTACT

T: 225.751.4490

F: 225.751.4495

E: lfitch@ddgpc.com

EDUCATION

M.S. Coastal and Ecological Engineering, 2016,
Louisiana State University

B.S. Environmental Engineering, 2014,
Louisiana State University

Doctorate of Philosophy Civil and Environmental Engineering,
Louisiana State University,
Course Completion 2020

EXPERIENCE

7+ Years of Experience

WITH DDG

2017 to Present

CERTIFICATIONS

Licensed Professional Engineering, LA #44323

AREAS OF EXPERTISE

- Program + Project Management
- Drainage Design
- Benefit Cost Analysis
- Numerical Modeling
- Hydrologic Restoration
- Grant Management

RELEVANT PROJECT EXPERIENCE

FRENCH BRANCH POND EXPANSION

St. Tammany Parish Government

H&H Lead. Ms. Fitch has led DDG's efforts in conducting the feasibility study including development of a hydrologic and hydraulic model, for a detention pond located off W-15 Canal adjacent to Reine Canal which would provide flood risk reduction for adjacent residential and commercial property owners. This project includes alternatives analysis and benefit cost analyses for HMGP grant opportunities.

LOWER W-15 BASIN DRAINAGE IMPROVEMENTS

St. Tammany Parish Government

H&H Lead / Asst. Project Engineer. Ms. Fitch utilized HEC-HMS / HEC-RAS models to understand existing flooding conditions within the W-15 basin, evaluated alternatives, and performed a benefit cost analysis to support the award of FEMA HMGP funds. Ms. Fitch assisted with the design and preparation of contract documents for 1+ mile of canal widening and construction of a 54-acre detention pond.

DOUBLOON BAYOU WATER LEVEL MONITORING

St. Tammany Parish Government

Project Engineer. Ms. Fitch has assisted with the installation and monitoring of six (6) water level loggers in Doubloon Bayou. Data collected during these efforts will be used to evaluate flow characteristics in the lower W-15 drainage basin. H&H models were calibrated and simulated for the purposes of event evaluations.

W-14 IMPROVEMENTS & FRITCHIE MARSH HYDROLOGIC RESTORATION

St. Tammany Parish Government

Project Engineer. Ms. Fitch has worked to reduce flood risks within the W-14 Canal Basin and the degradation of Fritchie Marsh. Project concepts include widening of the W-14 Canal, regional detention, and features to convey additional freshwater through Fritchie Marsh. HEC-HMS / HEC-RAS models were used for flood analysis, and a MIKE21 model was used to assess alternative improvements throughout Fritchie Marsh. Ms. Fitch completed the benefit cost analysis which secured HMGP funding.

BAYOU BONFOUCA REGIONAL DETENTION POND

St. Tammany Parish Government

H&H Lead. Ms. Fitch has led DDG's efforts in conducting the feasibility study including development of a hydrologic and hydraulic model, for a detention pond located off Bayou Bonfouca and which would provide flood risk reduction for adjacent residential and commercial property owners. This project includes alternatives analysis and benefit cost analyses for HMGP grant opportunities.

TEC Professional Services Questionnaire

KEY PERSON, SPECIALIST, OR INDIVIDUAL CONSULTANT:

Name & Title:

Alex Boudreau, MS, PE
Senior Project Manager

Project Assignment:

Senior Project Manager

Name of Firm with which associated:

Duplantis Design Group, PC

Years' experience with this firm:

1 Year

Education: Degree(s)/Year/Specialization:

MS, Civil Engineering, 2013,
Louisiana State University

BS, Biosystems Engineering, 2011,
Clemson University, Minor in
Environmental Engineering

Certification, Coastal Engineering, 2017, University of New Orleans

Ocean and Coastal Engineering - December 2015

Design of Coastal and Hydraulic Structures - May 2016

Coastal Processes - December 2016

Sediment Transport and Dredging - May 2017

Active registration: Year first registered/discipline:

Licensed in 2018 / Registered Professional Engineer / Civil Engineering Louisiana, #42737

Other experience and qualifications relevant to the proposed Project:

French Branch Pond Expansion Study

Gomesa Flood Protection Levee Improvements

Bayou Bonfouca Regional Detention Pond

Cypress Bayou Green Infrastructure Project

ALEX BOUDREAU, MS, PE

SENIOR PROJECT MANAGER



Alex is a professional engineer with over 9 years of experience in coastal and civil engineering and construction. He has acquired a broad and strong engineering base through both his academic background and career, having worked on tasks related to various disciplines of engineering, modeling, hydrology, permitting, structural design, and project management. Through this particular career track, he has acquired valuable software skills, engineering resources, professional contacts, and management practices.

AREAS OF EXPERTISE

- Program + Project Management
- Coastal Engineering + Restoration
- Numerical Modeling
- Hydrologic Restoration
- Benefit Cost Analysis
- Planning Preparation

RELEVANT PROJECT EXPERIENCE

FRENCH BRANCH POND EXPANSION STUDY

St. Tammany Parish Government

Project Manager. As Project Manager, Mr. Boudreau was responsible for leading DDG's efforts in assessing the feasibility and efficacy of a new storage pond to be located off of the W-15 (French Branch) Canal. In this position, Mr. Boudreau reviewed modeling results, helped prepare the modeling report and associated benefit cost analysis, interacted with the Client, verified surveying needs, and tracked the project's schedule and budget.

GOMESA FLOOD PROTECTION LEVEE IMPROVEMENTS

Assumption Parish Police Jury

Project Manager. As Project Manager, Mr. Boudreau is responsible for leading DDG's efforts in providing the engineering and design of various levee systems in Assumption Parish; as like many coastal areas within Louisiana, Assumption Parish regularly floods due to both significant rainfall and surge events. This has led Assumption Parish, also like most coastal areas, to implement immediate flood reduction strategies without an overall master plan designed. The effort that DDG is currently undertaking, and which is being managed by Mr. Boudreau, is the surveying and recordation of existing levee systems and associated pump stations such that a digital repository of spatial resources related to flooding and flood control can be utilized by the Jury for future planning and resourcing needs. In addition to this effort, revised and new levee alignments and configurations will be investigated, with parameters including costs, timelines, landowners, wetland impacts, and overall benefits accounted for.

BAYOU BONFOUCA REGIONAL DETENTION POND

St. Tammany Parish Government

Project Manager. As Project Manager, Mr. Boudreau was responsible for leading DDG's efforts in conducting a feasibility study, including development of a hydrologic and hydraulic model, for a detention pond located off of Bayou Bonfouca and which would provide flood risk reduction for adjacent residential and commercial property owners. As part of this project, tasks performed by Mr. Boudreau included reviewing modeling inputs and outputs, creating cost estimates based on historical bids, general CAD support, reporting and QA/QC, Client engagement, and tracking the project's schedule and budget.

CYPRESS BAYOU GREEN INFRASTRUCTURE PROJECT

Recreation and Park Commission for the Parish of East Baton Rouge

Project Manager. As Project Manager, Mr. Boudreau was responsible for leading DDG's efforts in assessing the feasibility and efficacy of deepening Greenwood Lake and widening a portion of Cypress Bayou such that existing inundation extents would be reduced due to the additional stormwater capacities and conveyances offered. As part of this project, tasks performed by Mr. Boudreau included reviewing modeling inputs and outputs; CAD support; presenting and assessing alternatives; reporting and QA/QC; sensitivity analysis; Client, subconsultant, and public engagement; conflict resolution; and tracking the project's schedule and budget.

AVAILABILITY

Throughout duration of Project

CONTACT

T: 225.751.4490

F: 225.751.4495

E: aboudreau@ddgpc.com

EDUCATION

MS, Civil Engineering, 2013,
Louisiana State University

BS, Biosystems Engineering, 2011,
Clemson University, Minor in
Environmental Engineering

Certification, Coastal Engineering,
2017, University of New Orleans

Ocean and Coastal Engineering -
December 2015

Design of Coastal and Hydraulic
Structures - May 2016

Coastal Processes -
December 2016

Sediment Transport and
Dredging - May 2017

EXPERIENCE

9+ Years of Experience

WITH DDG

2023 to Present

CERTIFICATIONS

Licensed Professional
Engineering, LA #42737

TEC Professional Services Questionnaire

KEY PERSON, SPECIALIST, OR INDIVIDUAL CONSULTANT:
Name & Title:
Stephanie Phillips Gros, PE, PTOE Transportation Lead + Principal
Project Assignment:
Transportation Lead + Principal
Name of Firm with which associated:
Duplantis Design Group, PC
Years' experience with this firm:
<1 Year
Education: Degree(s)/Year/Specialization:
Bachelor of Science in Civil and Environmental Engineering, 2008, Louisiana State University
Active registration: Year first registered/discipline:
Professional Traffic Operations Engineer #4864 Licensed in 2013/ Licensed Professional Engineer/ Civil Engineering #38692
Other experience and qualifications relevant to the proposed Project:
<p>St. Bernard Port North-South Intermodal Connector Road EDA Grant *</p> <p>LADOTD Stage 0 Retainer *</p> <p>MOVEBR Transportation Plan *</p> <p>Calcasieu Parish Transportation Initiative (CPTI) *</p> <p>LA 59 at Lonesome Road Roundabout *</p> <p>Canal Street Bridge (QA/QC)</p> <p>N. St. Antoine Extension - 4 Bridges (QA/QC)</p> <p>Lafayette Off-System Bridge Replacement Contract *</p> <p>Bridge Improvement Program Funding and Identification for City of Lafayette - 10 bridge replacements *</p> <p>US 190 Road + Bridge Improvements: LA 437 to US 190B LADOTD *</p> <p>LADOTD / Houma-Thibodaux to LA 3127 Hurricane Evacuation EIS - LADOTD *</p> <p>I-49 Connector</p> <p>Bluebonnet Boulevard - Streetscapes and Roundabouts Baton Rouge, LA *</p> <p>US 61(Airline Highway) Widening and Intersection Design - Baton Rouge, LA *</p> <p>Lafayette Streetscape Improvements- Planning and Design Lafayette, LA *</p> <p><small>* Prior to DDG</small></p>

STEPHANIE PHILLIPS GROS, PE, PTOE

TRANSPORTATION LEAD + PRINCIPAL



AVAILABILITY

Throughout duration of Project

CONTACT

T: 225.751.4490

F: 985.447.7009

E: sphillips@ddgpc.com

EDUCATION

Bachelor of Science in Civil and Environmental Engineering, 2008, Louisiana State University

EXPERIENCE

16+ Years of Experience

WITH DDG

2023 to Present

CERTIFICATIONS

Licensed Professional Engineering, LA #38692

Professional Traffic Operations Engineer #4864

Licensed in PE: 2013

and PTOE: 2020

For over 16 years, Ms. Phillips has led a variety of transportation projects from identification, preliminary needs, project feasibility, design, and construction for local and state agencies. Serving as the lead for more than 200 transportation projects, for both the private and public sector, and completing over 60 planning studies directly for DOT, she has managed all aspects of project delivery, including planning, environmental documentation, funding/grant administration, cost estimation, permitting, and public/stakeholder outreach. The success of several projects has heavily relied on advocating for better communication between state and local agencies, governmental entities, and private clients, early communication, and streamlining processes. She has assisted with policy writing for several LADOTD's in Pennsylvania and Mississippi, and lead grant applications for INFRA (SEAEDD), BUILD, STP, EDA, and several others. She has attended two (2) LADOTD LRTP Conferences and assisted with presentations for identified mega projects. Ms. Phillips has prepared and conducted several public and stakeholder meetings over the past 12 years for a variety of projects throughout Louisiana. At CSRS, she has led the Transportation practice and has helped mitigate several projects in progress to better comply with State and National permitting and compliance requirements, including coordination on identified LED sites that would request access to state-owned transportation infrastructure. She has completed several trainings such as the NHI: Development of a Transportation Asset Management Plan, NHI: Public Involvement in Transportation Decision Making, NHI: Practical Conflict Management Skills for Environmental Issues, NHI: NEPA and Transportation Decision Making, ATSSA Traffic Control Supervisor/Technician/Flagger, Traffic Engineering Process and Report, and Highway Safety Manual.

RELEVANT PROJECT EXPERIENCE

ST. BERNARD PORT NORTH-SOUTH INTERMODAL CONNECTOR ROAD EDA GRANT- ST. BERNARD PARISH, LA

Grant application lead for a north-south connector from Judge Perez Drive to St. Bernard Highway. In addition to connecting two highways, the road provides north-south connectivity to the Port of St. Bernard and completes one phase of the master plan for Florida Avenue TIME Project. The new roadway will open land up for development and provide an alternate ingress/egress for the hospitals they renovate and expand services. She worked with the future and existing tenant, the Port, other stakeholders, and regional planning office.

440004012 - LADOTD STAGE 0 RETAINER - STATEWIDE, LA

Project manager responsible for scoping, project implementation plans, inter-department coordination, local/state/federal agency coordination, and contract/project execution of several task orders (a total of 10) to provide statewide feasibility/planning services under a five-year retainer contract, in accordance with current LADOTD guidelines.

MOVEBR TRANSPORTATION PLAN - BATON ROUGE, LA

Program manager and pre-construction QA/QC lead responsible for the project management of the two largest projects in the program (Airline North and Airline South) and overall QAQC/consistency of programmatic policies. She assists in leadership of the program, cost estimation, financial modeling, budgets, design standards, and focuses on overall constructibility/feasibility of projects. As a part of her project management tasks, she has assisted with a large BUILD/INFRA grants and STP >200k applications, including cost estimation, identification of project goals, economic development and feasibility.

CALCASIEU PARISH TRANSPORTATION INITIATIVE (CPTI) - LAKE CHARLES, LA

Senior program manager responsible for the overall project delivery and QC/QA program to provide design policies, procedures, standards and guidelines in the preparation and review of all design products. The CPTI is a comprehensive transportation improvement program to environmentally permit, design, and construct transportation improvements on state routes within Calcasieu Parish.

H.011030 - LA 59 AT LONESOME ROAD ROUNDABOUT - MANDEVILLE, LA.

Project Design Lead- Engineer responsible for the development of the conceptual layout, preliminary design, and final design of the asphalt roundabout in St. Tammany Parish. Phillips' efforts included developing a roundabout configuration that met the minimum LADOTD design guidelines while addressing existing traffic, safety, and flood elevation challenges within the project area, which was achieved through evaluating existing traffic, crash data, nearby bridges, and waterway elevations to identify the logical horizontal and vertical geometry for the roundabout.

H.001344 - US 190 ROAD + BRIDGE IMPROVEMENTS: LA 437 TO US 190B LADOTD - COVINGTON, LA.

Project Design Lead/Manager- Responsible for the scope and contract execution, client coordination, invoicing and schedule updates for preliminary and final plans preparation for the drainage design, constructibility, TMP, and signal design, in accordance with LADOTD guidelines, for the widening of US 190 from LA 437 to US 190B. This project had a very aggressive schedule for preliminary and final plans to meet the letting date.

TEC Professional Services Questionnaire

KEY PERSON, SPECIALIST, OR INDIVIDUAL CONSULTANT:

Name & Title:

Cory MacMenamin, PLS, MBA
Vice President of Survey + Partner

Project Assignment:

Survey Lead

Name of Firm with which associated:

Duplantis Design Group, PC

Years' experience with this firm:

5 Years

Education: Degree(s)/Year/Specialization:

Masters of Business Administration, 2024 - Southeastern Louisiana University
Survey + Mapping, 2020, University of Wyoming
Bachelors in Business Management, 2019, Southeastern University
Associates in Land Surveying, 2008, Community College of Southern Nevada

Active registration: Year first registered/discipline:

Licensed in 2021/ Professional Land Surveyor/ Land Surveying #5269

Other experience and qualifications relevant to the proposed Project:

Lafayette Consolidated Government Drainage Initiative
St. Martin Drainage Improvements
Rienzi Drainage Study
Nicholls State University Drainage Study
Leighton Drainage Study
Rouzan Development Phase 6 and Belfleur Road Extension
Rouzan Commercial Development Perkins Road
Fremaux Town Center Distribution Center
Belfleur Road Extension (Rouzan Residential Development)
Lakeshore Village Subdivision (Phase 6,9-11)
South Alabama Logistics Park
FTA Program- Ponchatoula Pedestrian Improvements

CORY MACMENAMIN, PLS, MBA

SURVEY LEAD



The DDG Surveying Division is managed from DDG's Covington office by Cory MacMenamin. Having surveyed with his father since he was a boy, he has experienced many different facets of the industry, and he appreciates the historical significance of the survey profession and the challenges it faces as technological advancements shape its future. He has performed many different types of surveys ranging across multiple states and specialties. He has also worked on master planning, industrial, commercial, and residential projects throughout the state of Louisiana as well as projects in Mississippi, Alabama, Florida and Nevada.

AREAS OF EXPERTISE

- Topographic Surveying
- Hydrographic Surveys
- Drone Licensed Pilot

AVAILABILITY

Throughout duration of Project

CONTACT

T: 985.249.6180

F: 985.447.7009

E: cmacmenamin@ddgpc.com

EDUCATION

Associates in Land Surveying,
Community College of Southern
Nevada, 2008

Bachelor of Science in Business
Louisiana State University, 2019

Survey + Mapping, University of
Wyoming, 2020

Masters of Business Administration,
2024 - Southeastern Louisiana
University

EXPERIENCE

25+ Years of Experience

WITH DDG

2019 to Present

CERTIFICATIONS

Professional Land Surveyor
- Louisiana, #5269

Drone Pilot

RELEVANT PROJECT EXPERIENCE

LAFAYETTE CONSOLIDATED GOVERNMENT DRAINAGE INITIATIVE

Lafayette Consolidated Government

Survey Unit Lead. DDG was tasked with providing surveying services for detailed topographic/cross section/normal water surface surveys for four (4) drainage laterals within the boundaries of Lafayette Parish. These were IVC Lateral 4a Upper, IVC Lateral 11, Lateral 4a Anselm Coulee and Queue De Tortue Lateral No. 6. In addition, to cross sections along the channel alignments, this entailed locations (horizontal and vertical) of existing lateral drains and roadway crossings with the survey reaches.

ST. MARTIN DRAINAGE IMPROVEMENTS

St. Martin Parish Government

Survey Unit Lead. DDG's surveying team has completed the topographic survey of approximately 13 miles of drainage path-ways spanning from Bayou Teche to Leed Champagne Road. This data collection included areas of culverts, open channels, bulkheads and numerous tributary channel interfaces with the main coulee.

RIENZI DRAINAGE STUDY

North Lafourche Conservation Levee District

Survey Unit Lead. DDG's survey team completed a topographic survey of drainage canals and structures for a drainage basin outside of Thibodaux.

NICHOLLS STATE UNIVERSITY DRAINAGE STUDY

North Lafourche Conservation Levee District

Survey Crew Lead. DDG's survey team located and determined inverts and pipe sizes for the Nicholls State Campus underground drainage system. Drainage ditches were also cross sectioned at critical locations.

LEIGHTON DRAINAGE STUDY

North Lafourche Conservation Levee District

Survey Unit Lead. DDG's survey team completed a topographic survey of drainage canals and structures for a drainage basin southwest of Thibodaux.

TEC Professional Services Questionnaire

L. Work by Firm or Joint-Venture members which best illustrates current qualifications relevant to this Project. Please include any and all work performed for the Lafitte Area Independent Levee District (LAILD). Please attach additional pages if necessary.

PROJECT NO. 1

Project Name, Location and Owner's contact information:

W-14 DRAINAGE IMPROVEMENTS + FRITCHIE MARSH HYDROLOGIC RESTORATION

St. Tammany Parish, LA

St. Tammany Parish Government

Kelly Rabalais, CAO

(Gina Campo - Former CAO)

21490 Koop Drive

Mandeville, LA 70471

985.898.2700

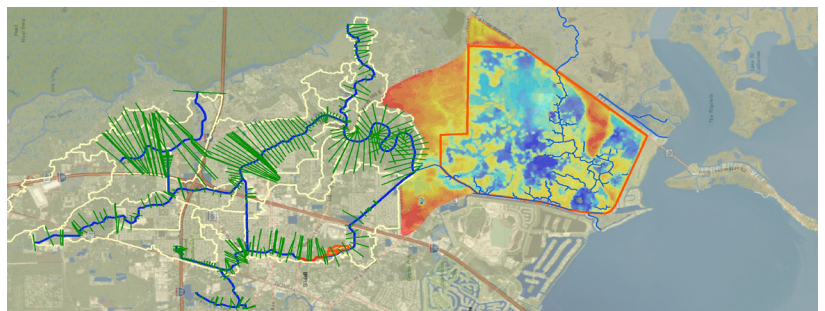
krabalais@stpgov.com

Nature of Firm's Responsibility:

Due to increases in land development, insufficient stormwater conveyance systems, and worsening tail water conditions due to sea level rise, there are significant drainage problems in the W-14 Basin resulting in significant street and structure flooding during severe rain events. DDG worked with St. Tammany Parish Government to obtain HMGP grant funding to reduce the risk of flooding for people residing in the W-14 basin while simultaneously reducing the marsh loss rates in the Fritchie Marsh.

The DDG team utilized an unsteady state HEC-RAS model of the W-14 Basin to evaluate the extent of existing flooding and to conduct an analysis of project alternatives. Flood reduction will be accomplished by widening approximately 3,250 feet of the W-14 Canal and constructing a regional detention pond to mitigate increases in downstream discharge resulting from improved conveyance. Based on the numerical model results, DDG performed a Benefit Cost Analysis (BCA) for the W-14 Basin to secure funding of the identified drainage improvements.

In addition to the HEC-RAS modeling, a 2D water surface model (MIKE FLOOD) of the Fritchie Marsh was developed in coordination with the Water Institute of the Gulf. Wetlands will be enhanced in the future by improving conveyance of freshwater and nutrients from the W-14 Basin to the Fritchie Marsh. DDG continues to coordinate with state and federal agencies through the CWPPRA program to improve the circulations patterns and therefore the health of the Fritchie Marsh.



Completion Date
(Actual or Estimated):

Estimated Cost:

Entire Project:


Work for which
Firm was Responsible:

Construction began: 2016
Completion Date: Ongoing - TBD

\$3,425,000

\$642,334

TEC Professional Services Questionnaire

PROJECT NO. 2		
<p>Project Name, Location and Owner's contact information:</p> <p>LOWER W-15 BASIN DRAINAGE IMPROVEMENTS</p> <p>St. Tammany Parish, LA</p> <p>St. Tammany Parish Government Kelly Rabalais, CAO (Gina Campo - Former CAO) 21490 Koop Drive Mandeville, LA 70471 985.898.2700 krabalais@stpgov.com</p>	<p>Nature of Firm's Responsibility:</p> <p>Due to the increase in land development and inadequate stormwater conveyance, the W-15 Drainage Basin in St. Tammany Parish, Louisiana experiences significant flooding. Beginning in 2011, DDG developed a comprehensive plan for drainage improvements. The project consisted of preparing a HEC-RAS and HEC-HMS for a project area of 35-square miles that encompasses three separate but interconnected basins including W-15 Canal, W-14 Canal, and Gum Bayou Basin. Utilizing previous model data from the Southeast Louisiana Urban Flood Control Project (SELA) as well as newly acquired topographic and bathymetric data, models were developed to understand existing flooding conditions and to evaluate various alternatives for improving flood conveyance and storage. A total of 27 different alternatives were evaluated to determine the most economical solution to alleviate the existing flooding problems in different parts of the basin. A Benefit Cost Analysis (BCA) was prepared for FEMA to facilitate the award of Hazard Mitigation Grant Program (HMGP) funds.</p> <p>The recommended project included the construction of a 324-acre regional detention pond and cleaning and widening of approximately 3 miles of the W-15 Canal. This project accomplishes two objectives: reducing peak runoff to the W-15 Canal downstream of the Tenet Pond and increasing the conveyance capacity of the W-15 Canal. These two project elements effectively reduce the water surface elevations along the W-15 Canal thereby reducing impacts to structures throughout the W-15 Basin. DDG provided engineering services to St. Tammany Parish that included engineering design, permitting, preparation of bid documents and construction inspection.</p> <div style="text-align: center;">  </div>	
<p>Completion Date (Actual or Estimated):</p>	<p>Estimated Cost:</p>	
<p>11/11 - On-Going Detention Pond Completed: 12/19 Canal Improvements Completed: 2021</p>	<p>Entire Project:</p> <p>\$7 Million</p>	<p>Work for which Firm was Responsible:</p> <p>\$136,000</p>

TEC Professional Services Questionnaire

PROJECT NO. 3								
<p>Project Name, Location and Owner's contact information:</p> <p>CYPRESS ISLAND / JOE DAIGRE DRAINAGE SYSTEM MAINTENANCE PROJECT</p> <p>St. Martin Parish, LA</p> <p>St. Martin Parish Government Callen Huval, EI 301 West Port Street St. Martinville, LA 70582 chuval@stmartinparish.net 337.394.2200</p>	<p>Nature of Firm's Responsibility:</p> <p>The Cypress Island / Joe Daigre Drainage System Maintenance project is aimed to reduce flood risk to residential and commercial properties while increasing recreation and navigable opportunities throughout the Joe Daigre watershed. This is accomplished by implementing various drainage improvements to the Joe Daigre Coulee and its tributaries. The project includes deploying twelve (12) water level loggers throughout the watershed to monitor water surface elevations. The collected water level data is utilized for model calibration efforts, evaluation of hydraulic grades, and identifying potential conveyance restrictions. Topobathymetric surveys include bridge and culvert structures and channel cross sections. Drone flights captured aerial imagery and videos throughout the watershed. DDG's 2D numerical model evaluates existing conditions, post-maintenance conditions and alternative drainage improvements. DDG is providing alternatives analysis, conceptual design, opinion of probable construction costs, and environmental due diligence for proposed drainage improvements.</p> <div style="text-align: center;">  </div>							
<p>Completion Date (Actual or Estimated):</p> <p>Ongoing - TBD</p>	<table border="1" style="width: 100%; border-collapse: collapse;"> <thead> <tr style="background-color: #2c5e8a; color: white;"> <th colspan="2" style="padding: 5px;">Estimated Cost:</th> </tr> </thead> <tbody> <tr> <td style="width: 50%; padding: 5px; text-align: center;">Entire Project:</td> <td style="width: 50%; padding: 5px; text-align: center;">Work for which Firm was Responsible:</td> </tr> <tr> <td style="padding: 5px; text-align: center;">\$162,000,000</td> <td style="padding: 5px; text-align: center;">\$226,518</td> </tr> </tbody> </table>		Estimated Cost:		Entire Project:	Work for which Firm was Responsible:	\$162,000,000	\$226,518
Estimated Cost:								
Entire Project:	Work for which Firm was Responsible:							
\$162,000,000	\$226,518							

TEC Professional Services Questionnaire

PROJECT NO. 4								
<p>Project Name, Location and Owner's contact information:</p> <p>ST. TAMMANY PARISH DRAINAGE ASSESSMENTS</p> <p>St. Tammany Parish, LA</p> <p>St. Tammany Parish Government Laura Gatlin, PMP Dept. of Engineering Project Manager 21490 Koop Drive Mandeville, LA 70471 985.898.2552 lcbeach@stpgov.org</p>	<p>Nature of Firm's Responsibility:</p> <p>DDG has provided services to St. Tammany Parish since 2009 having successfully managed the implementation of \$38 million in Community Development Block Grant (CDBG) funds to improve drainage throughout the Parish. Since establishing an office in St. Tammany Parish in 2005, DDG has completed drainage studies and prepared designs for numerous drainage and coastal protection projects throughout St. Tammany, many of which were funded with federal disaster grants such as FEMA's Hazard Mitigation Grant Program (HMGP). DDG provided coastal management assistance to St. Tammany by helping to develop coastal restoration and protection projects with a construction value of over \$500 million that were recommended to the 2017 Louisiana Coastal Master Plan. DDG has also assisted the Parish revise the Stormwater Management Ordinance and implementation. Of particular importance has been the production of a working 1D/2D HEC-RAS hydrologic and hydraulic model that DDG has continued to refine as additional topobathy and water level information have been collected by DDG and as improved versions of HEC-RAS have become available. The flood risk and inundation reduction projects that DDG has assessed to date in St. Tammany Parish include, but are not limited to:</p> <ul style="list-style-type: none"> The development of a 54-acre storage pond located along the W-15 canal on the Tenet property. Construction on this work commenced in 2017 with DDG providing construction administration throughout. The widening and clearing and snagging of the W-14 canal to reduce the flooding impacts in the W-14 Basin. Construction on this work commenced in 2022 with DDG providing construction administration. Improvements in the upper Fritchie Marsh Basin to assist in restoring coastal marsh area in Fritchie Marsh. The investigation into the feasibility of raising Herwig Bluff Road, Old River Road, and Oak Alley Drive as these roads became inundated during storm events. The design of storage pond(s) along Bayou Bonfouca to reduce upstream and downstream flooding impacts. Design is currently ongoing. The design of additional detention ponds along the W-15 canal to further mitigate flooding in the Lower W-15 watershed. Design is currently ongoing. <div style="text-align: center;">  </div>							
<p>Completion Date (Actual or Estimated):</p>	<table border="1" style="width: 100%; border-collapse: collapse;"> <thead> <tr style="background-color: #005596; color: white;"> <th colspan="2" style="padding: 5px;">Estimated Cost:</th> </tr> </thead> <tbody> <tr> <td style="width: 50%; padding: 5px; text-align: center;">Entire Project:</td> <td style="width: 50%; padding: 5px; text-align: center;">Work for which Firm was Responsible:</td> </tr> <tr> <td style="width: 50%; padding: 5px; text-align: center;">2011 - Ongoing (TBD)</td> <td style="width: 50%; padding: 5px; text-align: center;">TBD</td> </tr> </tbody> </table>		Estimated Cost:		Entire Project:	Work for which Firm was Responsible:	2011 - Ongoing (TBD)	TBD
Estimated Cost:								
Entire Project:	Work for which Firm was Responsible:							
2011 - Ongoing (TBD)	TBD							

TEC Professional Services Questionnaire

PROJECT NO. 5		
<p>Project Name, Location and Owner's contact information:</p> <p>PROGRAM MANAGEMENT OCD/ CDBG DRAINAGE PROJECT</p> <p>St. Tammany Parish, LA</p> <p>St. Tammany Parish Government St. Tammany Parish Government Kelly Rabalais; CAO (Gina Campo - Former CAO) 21490 Koop Drive Mandeville, LA 70471 985.898.2700 krabalais@stpgov.com</p>	<p>Nature of Firm's Responsibility:</p> <p>Following the receipt of CDBG-OCD Hurricanes Katrina and Rita related funds in 2009, St. Tammany Parish selected DDG to design and oversee an effective drainage improvement program. The resulting program led to the design and implementation of 10 large-scale regional drainage improvement projects. DDG was responsible for the following: 1) coordinating and assisting with land acquisition by setting up and preparing exhibits necessary for the legal department to procure the land in order to implement the drainage projects; 2) organizing/managing and assisting the wetlands consultant in the preparation of exhibits and drawings necessary to obtain approvals and permits to begin the projects; 3) assisting with the site selection of the projects coordination and management of consultants; 4) preparation of overall project schedules and budgets; 5) review of hydrologic studies and proposed designs; 6) support during bidding and project construction activities. To date, DDG has successfully overseen the completion of eight (8) projects with a total construction cost of nearly \$40 million.</p> <p>Since the initial receipt of CDBG-OCD funds, DDG has continued to provide on-call assistance for St. Tammany Parish's drainage improvement program and coastal management program. Activities supported by DDG include capital planning, project development, funding support, grant application support, benefit cost analysis, and H&H modeling support to augment the Parish's in-house staff. As a subconsultant to DDG, CE Hydro conducted DFIRM coordination with FEMA including review of surge models, LAMP for non-accredited levees, review and analysis of WHAFIS modeling results, and general FEMA coordination.</p> <div style="text-align: center;">  </div>	
<p>Completion Date (Actual or Estimated):</p>	Estimated Cost:	
	Entire Project:	Work for which Firm was Responsible:
Ongoing	\$6,900,000	\$1,250,000

TEC Professional Services Questionnaire

PROJECT NO. 6		
<p>Project Name, Location and Owner's contact information:</p> <p>NICHOLLS STATE UNIVERSITY CAMPUS AREA DRAINAGE STUDY</p> <p>Thibodaux, LA</p> <p>North Lafourche Conservation Levee & Drainage District Dwayne Bourgeois P.O. Box 309 Thibodaux, LA 70302 985.537.2244</p>	<p>Nature of Firm's Responsibility:</p> <p>The Nicholls Campus is approximately +/-280 acres of land in the eastern reach of the City of Thibodaux. The Campus is generally comprised of a mixture of buildings and associated parking areas, recreational spaces (soccer/baseball/football fields, walking trails, tennis courts, etc.), student housing, greens space areas, etc. The overall basin generally drains to the existing large box culvert conveyance, which traverses the Campus north of the football/baseball fields and ultimately discharges to the road side ditch on Bowie Road, continuing east to the 40 Arpent Canal.</p> <p>Due to drainage issues encountered within the Campus, NLCLDD has requested that DDG investigate the existing conditions to determine areas of deficiency that can be identified, studied, and subsequently addressed to improve the drainage in this area and overall efficiency of the drainage system within the Campus.</p> <p>DDG's survey team provided survey services to assist with additional investigations of drainage area study. DDG's civil team used information collected to better define the drainage patterns and to make a recommendation of a list of improvements by greatest necessity and cost expectations.</p> <div style="text-align: center;">  </div>	
<p>Completion Date (Actual or Estimated):</p> <p style="text-align: center;">2020</p>	Estimated Cost:	
	<p>Entire Project:</p> <p style="text-align: center;">N / A (Study Only)</p>	<p>Work for which Firm was Responsible:</p> <p style="text-align: center;">\$56,220</p>

TEC Professional Services Questionnaire

PROJECT NO. 7		
<p>Project Name, Location and Owner's contact information:</p> <p>ABBY ROAD DRAINAGE IMPROVEMENTS</p> <p>Lafourche Parish, LA</p> <p>Lafourche Parish Government James Cantrelle P.O. Drawer 5548 Thibodaux, LA 70302</p>	<p>Nature of Firm's Responsibility:</p> <p>Lafourche Parish Government approached DDG to design a subsurface drainage system along Abby Road in Thibodaux, LA. The existing drainage ditch and culverts were not adequate to handle the outflow from the Abby Lakes Subdivision . DDG conducted a hydraulic analysis and investigation of the area to determine the best and most cost efficient culverts to sufficiently convey the storm water. Based on the analysis and the needs of the parish, double barrel culverts were installed in the existing drainage ditches to resolve the inadequate conveyance of the storm water. DDG sized the required culverts based on the hydraulic analysis and prepared construction documents for the required improvements. DDG coordinated the public bidding process for the parish and also provided full inspection services during construction.</p> <div style="text-align: center;">   </div>	
<p>Completion Date (Actual or Estimated):</p>	Estimated Cost:	
	Entire Project:	Work for which Firm was Responsible:
2016	\$316,888	\$25,850

TEC Professional Services Questionnaire

PROJECT NO. 8

Project Name, Location and
Owner's contact information:

RIENZI / NORTH CANAL DRAINAGE STUDY

Lafourche Parish, LA

North Lafourche Conservation Levee & Drainage District

Dwayne Bourgeois

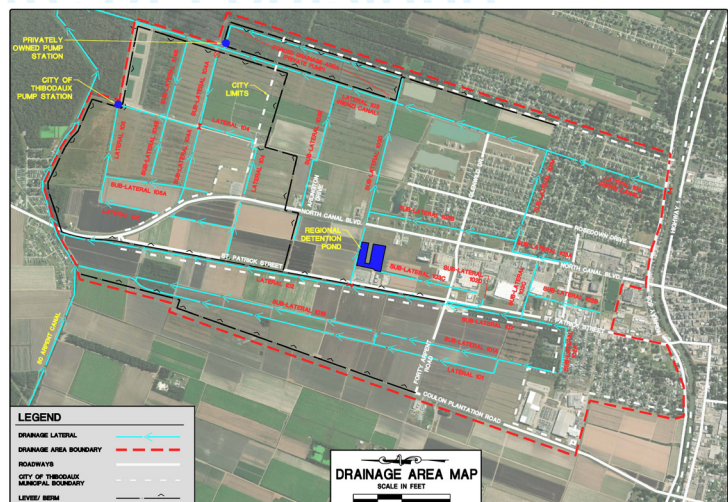
P.O. Box 309

Thibodaux, LA 70302

985.537.2244

Nature of Firm's Responsibility:

The Rienzi / North Canal Drainage Basin includes approximately +/-1900 acres of land at the northern tip of Lafourche Parish. Due to drainage issues encountered within the Basin, NLCLDD has requested that DDG investigate the existing conditions to determine areas of deficiency that can be identified, studied, and subsequently addressed to improve the overall efficiency of the drainage system within the Basin. The investigation will focus on the existing conveyance systems out to the Eighty Arpent, the Eighty Arpent Canal, and the existing subsurface drainage systems throughout the Basin as needed to identify specific problem areas. This study will evaluate the drainage basin as a whole without regard to the municipal boundaries so that the recommendations included in the study area are based on their effectiveness at improving the drainage within the overall basin as opposed to jurisdictional boundaries. DDG's survey team provided survey to assist with additional investigations of drainage area study. DDG's civil team used information collected to better define the drainage patterns and to make a recommendation of a list of improvements by greatest necessity and cost expectations. DDG developed a two-dimensional HEC-RAS model and calibrated the model based on observed rainfall and stages in the existing canals. The model is being used to further evaluate existing drainage deficiencies within the region and to size the proposed pump station, major conveyance channels, and storage reservoir. DDG survey performed a bathymetric survey for drainage study utilizing single beam echo sounder and a shallow draft mud boat for subdivision design. Post processing was completed using Trimble Business Center after data was processed it was exported to Civil 3D for DTM creation.



Completion Date
(Actual or Estimated):

Estimated Cost:

Entire Project:

Work for which
Firm was Responsible:

2018

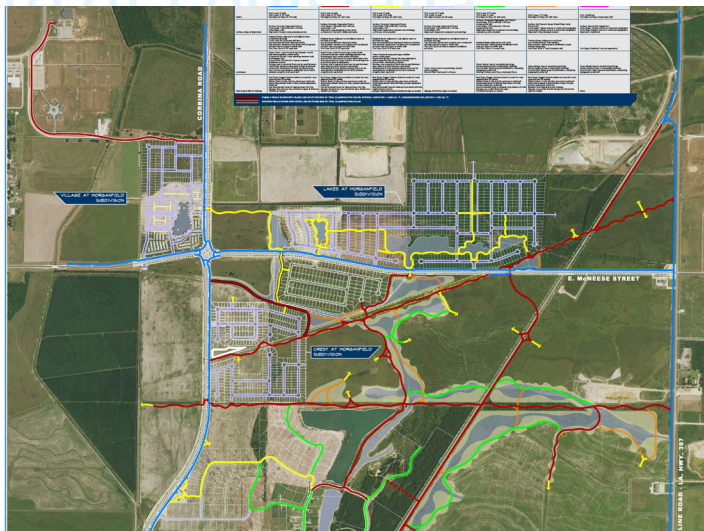
N / A (Study Only)

\$121,267

TEC Professional Services Questionnaire

PROJECT NO. 9		
<p>Project Name, Location and Owner's contact information:</p> <p>ST. CHARLES BY-PASS BACKWATER DRAINAGE</p> <p>Lafourche Parish, LA</p> <p>North Lafourche Conservation Levee & Drainage District Dwayne Bourgeois P.O. Box 309 Thibodaux, LA 70302 985.537.2244</p>	<p>Nature of Firm's Responsibility:</p> <p>This project involves drainage improvements to a portion of the St. Charles By-Pass Road Subdivision that experiences flooding during rainfall events and/or high water events in the 40 Arpent Canal. Drainage improvements includes levees, ditch excavations, culvert replacement, culvert flap-gate addition, ditch clean out, and retrofitting the drainage system to accept a pump station at a later date. DDG is responsible for acquiring all right of ways, acquiring all permits, providing preliminary design solutions, and preparing construction documents to distribute to contractors for public bid.</p>	
		
	Estimated Cost:	
	<p>Completion Date (Actual or Estimated):</p>	<p>Entire Project:</p>
<p>2018</p>	<p>\$518,326.69</p>	<p>\$66,200</p>

TEC Professional Services Questionnaire

PROJECT NO. 10						
Project Name, Location and Owner's contact information:		Nature of Firm's Responsibility:				
<p>MORGANFIELD MASTER DRAINAGE PLAN & DETENTION CREDIT SYSTEM</p> <p>Calcasieu Parish, LA</p> <p>MorganField Development, LLC Lucinda O'Quinn 500 Kirby Street Lake Charles, LA 70605 337.437.4000</p>		<p>The MorganField Development is a large-scale mixed-used development (residential and commercial) that is expected to encompass over 2,000 acres in the East McNeese Street Basin in Calcasieu Parish, Louisiana. The development extends from just north of East McNeese Street to Louisiana Hwy 14 to the south and from Corbina Road east to Louisiana Hwy 397 (East Ward Line Road). The proposed development lies in the headwaters of the Kayouchee Coulee and Black Bayou Basins, both of which are sub-basins of the larger East McNeese Street Basin. With multiple development phases, the intent of the MDP is to address how a system of integrated stormwater features (detention ponds, channels, hydraulic structures, etc.) function to prevent increases in flooding both within the boundaries of the development and in receiving waters downstream. Knowledge of the how the complete system functions will inform the phasing and construction of individual stormwater features over time.</p> <p>DDG is preparing the master drainage plan based on an unsteady HEC-RAS model that was developed for the larger East McNeese Street Basin. This model was updated to represent existing condition and various alternatives were evaluated to develop a drainage plan that meets both the client design criteria and local ordinance requirements. DDG worked with the Calcasieu Police Jury (CPPJ), the City of Lake Charles (City), and the Gravity Drainage District to demonstrate how a larger, regional stormwater plan and system offsets the need for smaller individual detention. Upon development, the MDP will ensure that water surface elevations at all locations with the project area are at or lower than existing conditions.</p>				
						
Completion Date (Actual or Estimated):		Estimated Cost:				
		<table border="1"> <thead> <tr> <th>Entire Project:</th> <th>Work for which Firm was Responsible:</th> </tr> </thead> <tbody> <tr> <td>\$91,800</td> <td>\$43,711</td> </tr> </tbody> </table>	Entire Project:	Work for which Firm was Responsible:	\$91,800	\$43,711
Entire Project:	Work for which Firm was Responsible:					
\$91,800	\$43,711					
Study January 2019 Project Mngt. - Ongoing						

TEC Professional Services Questionnaire

M. List all prior and/or on-going litigation between Firm and Jefferson Parish. Please attach additional pages if necessary.

Parties:		Status/Result of Case:
Plaintiff:	Defendant:	
N/A	N/A	N/A

N. Use this space to provide any additional information or description of resources supporting Firm's qualifications for the proposed project.



THIBODAUX
LAFAYETTE
COVINGTON
BATON ROUGE
NEW ORLEANS
HOUSTON
MOBILE
MISSISSIPPI



170+

EMPLOYEES

16

STATES
LICENSED

4,500+

PROJECTS
COMPLETED

40

LICENSED
PROFESSIONALS

8

OFFICE
LOCATIONS

A LEADING EDGE APPROACH

DDG is a multi-disciplinary firm that offers ten (10) service lines: project management, architecture, civil engineering, landscape architecture, coastal engineering, water resources, environmental, surveying, structural engineering, and transportation. DDG has successfully completed over 4,500 projects across the Gulf Coast Region. Whether through our in-house project management and design services or using a network of trusted partner firms, our team's knowledge of material availability and construction practices have been invaluable in early planning decisions. DDG has over two decades of experience managing every aspect of a project. From the initial site assessment and due diligence through the project's substantial completion, DDG's team of design professionals pride themselves not only on the technical aspects of a project, but also on our ability to focus on exceeding clients' expectations and providing top rated client satisfaction.

OUR SERVICES



PROJECT
MANAGEMENT



CIVIL
ENGINEERING



ARCHITECTURE



LANDSCAPE
ARCHITECTURE



WATER
RESOURCES



SURVEYING



COASTAL
ENGINEERING



ENVIRONMENTAL
+ REGULATORY



TRANSPORTATION
ENGINEERING



STRUCTURAL
ENGINEERING

N. Use this space to provide any additional information or description of resources supporting Firm's qualifications for the proposed project. (Continued)



CIVIL ENGINEERING

26

LICENSED
PROFESSIONALS

16

ENGINEERING
INTERNS

16

STATES
LICENSED

The DDG civil engineering group is an industry leader in the planning, design and management of various projects for multiple client types throughout the Gulf Coast. Our firm has successfully worked with numerous private and public sector clients, architectural and development firms, as well as national retailers and industrial users. This broad range of experiences has allowed us to create strong relationships with various local, state, and federal agencies in order to provide the services required to meet the needs of our clients and the agencies themselves. DDG prides itself in strong communication, exceptional customer service and teamwork. DDG's professional civil engineering staff and diverse experience allows us the ability to serve clients in multiple market segments on complex projects.



DDG's general knowledge of the development process as well as their understanding of the St. Tammany Parish regulations has yielded a high level of service to the parish and our staff. DDG has done an excellent job of understanding the specific needs of the client and community and have been able to guide projects toward the end goal.

Gina Campo
Chief Operating Officer
St. Tammany Parish Government

SERVICES

Site Investigation Reports
Due Diligence Coordination
Permitting
Feasibility Studies
Conceptual Site Design
Entitlement Coordination
Permitting
Commercial Site Design
LEED Design and Consultation
Water Distribution Systems
Wastewater Collection
Systems
Stormwater Management
Design
Stormwater Pollution
Prevention Planning
Stormwater Construction
Inspections
Stormwater Construction
Compliance Audits
Construction Administration
Traffic Improvements
Roadway Design
Master Planning
Drainage
Sewer Conveyance Systems
Sewer Assessment
Pump Stations
DOTD Beautification

N. Use this space to provide any additional information or description of resources supporting Firm's qualifications for the proposed project. (Continued)



COASTAL ENGINEERING

Marsh
Creation

Stormwater
Management

Flood Risk
Reduction

Project
Management

Master
Planning

Construction
Administration

Modeling +
Mapping

Watershed
Management

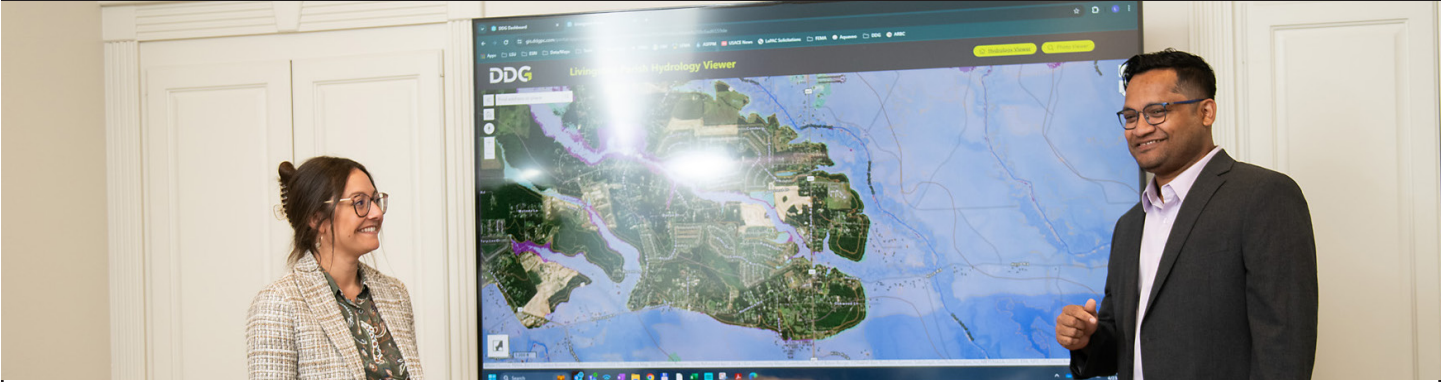
RESTORING + PROTECTING

Local Knowledge and Passion Matter. No one knows and understands the Gulf Coast better than the people who live and work here. DDG has been operating on the Gulf Coast for over two decades. We are experienced with numerous coastal projects. DDG is committed to the livelihood of our coast and has extensive knowledge of the terrain, coastline, wildlife and fisheries, and other driving economic factors. DDG'S internal team of coastal experts has over fifty years of combined experience, many of which were in direct alignment with various agencies responsible for the protection of our coastline. Since the inception of DDG'S Coastal Division in 2013, the firm's team has successfully designed over 4,500 acres of marsh creation projects and has worked on an abundance of drainage projects benefiting thousands of homes and families throughout Louisiana.

4,500+

ACRES OF
MARSH
CREATION

N. Use this space to provide any additional information or description of resources supporting Firm's qualifications for the proposed project. (Continued)



WATER RESOURCES

DDG's expertise in hydrology and hydraulics engineering was developed through our years of experience with site development activities across the State, together with our support of local municipalities with flood risk assessments and regional drainage improvement projects. From the retrofit of local drainage infrastructure to the design of regional detention facilities, to conveyance improvements in major waterways, to complete drainage designs for thousands of acres of development, we have done it all.

SERVICES PROVIDED:

- Drainage Impact Studies
- Drainage Impact Analysis
- Hydrologic Modification Impact Analysis
- Letter of Map Revisions
- Benefit-Cost-Analysis
- Conveyance Zone Analysis
- Flood Studies
- No Rise Certifications
- Hazard Mitigation
- Feasibility Studies

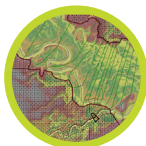
ASSESSMENTS + SOLUTIONS

- Detention / Retention Pond Sizing (*and modifications*)
- Channel / Ditch Sizing (*and modifications*)
- Subsurface Network Sizing (*and modifications*)
- Outlet Control Design (*and modifications*)
- Flood Inundation Mapping (*and modifications*)
- Stormwater Flow Mapping
- Scour Assessments

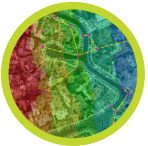
MODELING PROGRAMS



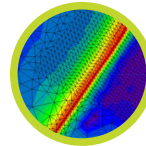
HEC-HMS



HEC-RAS



INFOWORKS ICM



MIKE

COASTAL APPLICATIONS

WAVE ANALYSIS

This model can predict offshore and coastal wave processes and impact.

MORPHOLOGICAL ANALYSIS

This model concentrates on the evolution of earth surface (river, coastal) due to water motion.

SALINITY ANALYSIS

This model stimulates the amount of dissolved salt in a waterbody.

SURVEYING

DDG's licensed surveyors and survey personnel have over 100 years of combined surveying experience in topographic, property boundary, and hydrographic surveys. Our team has successfully and safely completed numerous surveying, staking, and mapping projects across the Gulf Coast.

DDG raises the bar by utilizing the latest and most efficient methods for collecting and staking data points for all types of surveys. DDG is committed to staying at the forefront of technology and uses the latest GPS, Robotic, Remote Sensing, and conventional surveying equipment to ensure that our clients receive accurate and precise data. DDG's surveying division has successfully worked with numerous private and public sector clients, ranging from the engineering and pipeline industries to federal, state and local government agencies, as well as servicing our in-house design professionals.

SERVICES PROVIDED

- BOUNDARY SURVEY
- TOPOGRAPHIC SURVEY
- ATLA/NSPS SURVEY
- AS-BUILT SURVEY
- PIPELINE LOCATION
- CORRIDOR SURVEY
- PROJECT CONTROL SURVEY
- HYDROGRAPHIC SURVEY
- CONSTRUCTION STAKING
- MAGNETOMETER SURVEY
- MARINE CONSTRUCTION
- HIGH RESOLUTIONS MULTI-BEAM SURVEY
- SINGLE-BEAM SURVEY
- SHALLOW HAZARDS SURVEY
- TERRESTRIAL SCANNING
- AERIAL LIDAR
- REALITY CAPTURE
- GIS MAPPING



N. Use this space to provide any additional information or description of resources supporting Firm's qualifications for the proposed project. (Continued)

SEAMLESS INTEGRATION

DDG offers an integrated design delivery method with our team all working collaboratively under one roof providing the highest level of quality control throughout the project life-cycle.

PROJECT MANAGEMENT

DDG has experience in managing a vast range projects spanning across the South Coast. DDG has always maintained success in fully leveraging the capacity of the Project Team based on understanding of each individual's expertise, communication of roles and responsibilities, clear assignments, and establishing effective project schedules and fee allocations. DDG is committed to utilizing its local knowledge and experience to expedite normally hindering project milestones and optimize project outcomes.

CIVIL ENGINEERING

Our experience across many types of projects has forged strong relationships with the many local, state, and federal agencies. We pride ourselves in strong communication, exceptional service, and a broad range of experience from which we develop solutions to meet the needs of project stakeholders. We serve clients in many different ways to suit the needs of each project. Our professional civil engineering staff and diverse experience equips us with the ability to serve clients in multiple market segments on projects with all levels of complexity.

ARCHITECTURE

DDG's Architecture division is honored to celebrate a long history of creating exciting architectural environments. A strong foundation in retail architecture quickly led to growth in numerous areas of practice. By leveraging the remarkable strengths and talents of our resourceful architectural team, DDG has developed into a unified team of professional architects and interns dedicated to our company's core values. Our mission is to elevate architectural experiences through responsive communication and innovation. Our vision is to provide high-quality building design environments, to create sought after design experiences, and to exceed client expectations in the Gulf Coast region.

LANDSCAPE ARCHITECTURE

DDG's landscape architecture group is well known for the planning and design of inspired landscapes that reflect the ecology and culture of places throughout the South. Our reputable experience and leadership has generated value-added solutions that create a sense of place while offering sustainable solutions that are precisely suited to the client and the site. Regardless of the client or project scope, we are committed to developing aesthetically pleasing, functional design that lay a strong foundation for the future of your community.

WATER RESOURCES

DDG's expertise in hydrology and hydraulics engineering was developed through our years of experience with site development activities across the Region, together with our support of local municipalities with flood risk assessments and regional drainage improvement projects. DDG is well-versed in both steady and unsteady one dimensional / two dimensional modeling. DDG has extensive experience utilizing public domain and proprietary models such as SWMM, HEC-HMS, HEC-RAS, AutoDesk Storm and Sanitary Analysis, for hydrologic assessments, conveyance / storage analysis and drainage design.

SURVEYING

DDG's in-house survey personnel and licensed surveyors have over 100 years of land surveying experience in topographic, property boundary and hydrographic surveys. Our team has successfully and safely completed numerous surveying and mapping projects across the Gulf Coast region. DDG raises the bar by utilizing the latest and most efficient methods for collecting and staking data points for property and topographic surveys.

COASTAL ENGINEERING

DDG is committed to the livelihood of the Gulf Coast and has extensive knowledge of the Gulf Coast's terrain, coastline, wildlife and fisheries, and other driving economic factors. DDG's internal team of coastal experts has over fifty years of combined experience, many of which were in direct alignment with various agencies responsible for the protection of the Gulf Coast. Since the inception of DDG's Coastal Division in 2013, the firm's team has successfully designed over 4,000 acres of marsh creation projects and has worked on an abundance of drainage projects benefiting thousands of homes and families throughout the Gulf Coast.

ENVIRONMENTAL + REGULATORY

DDG's environmental professionals are thoroughly familiar with the regulations and regulatory process of numerous governing agencies, and we work with these agencies on a daily basis. DDG has significant experience with permitting services including data consolidation, application preparation and submittal, as well as facilitating correspondence with appropriate agencies and stakeholders. DDG offers a diverse range of services designed to meet and exceed our clients' needs and expectations.

TRANSPORTATION ENGINEERING

DDG's transportation services involves analyzing, developing, and delivering functional solutions to increase the safety and efficiency of transportation systems. The funding advisory practice will allow for both public and private clients to improve their project potential by maximizing funding from numerous new and/or established funding programs.

STRUCTURAL ENGINEERING

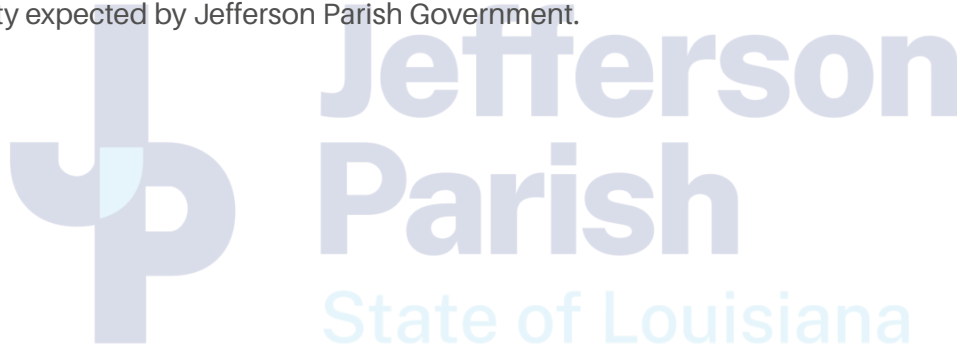
What sets DDG's Structural Engineering team apart is our real world experience and in-depth knowledge that enables us to solve even the most challenging structural engineering tasks. We work closely with our clients to ensure that our designs meet their requirements and exceed their expectations.

N. Use this space to provide any additional information or description of resources supporting Firm's qualifications for the proposed project. (Continued)


CAPABILITY OF FIRM

Fully leveraging the capacity of DDG's staff will be achieved on an understanding of each individual's expertise, communication of roles and responsibilities, clear assignments, and establishing attainable project milestones. Additional factors highlighting the capacity of our firm/team include:

- **Local Availability** - All of DDG's staff that will work on this project are licensed in the State of Louisiana, work out of our New Orleans, Covington, Thibodaux, and Baton Rouge office locations.
- **Efficient Execution** - With the pertinent skills in hydraulics and hydrology combined with our history of efficient production for large scale site development projects, we have the ability to deliver these services more cost effectively than our competitors. We know what to do and have the skills and tools to execute the work.
- **Ideal Firm Size** - With the key individuals who are assigned to this project backed by resources who are all Louisiana-based, we are dedicated to providing reliable, responsive service on this project. With a total staff of 170 individuals, annual revenues of almost \$35M, and with the ability to execute hundreds of projects each year, DDG will provide the leadership necessary to ensure the work is delivered on time, on budget, and to the quality expected by Jefferson Parish Government.



O. To the best of my knowledge, the foregoing is an accurate statement of facts.

Signature:  _____

Printed Name: Scott Tabary, PE

Title: Civil Engineering Lead + Partner

Date: June 20, 2024



DUPLDES-01

BWEAVER1

CERTIFICATE OF LIABILITY INSURANCE

DATE (MM/DD/YYYY)
1/2/2024

THIS CERTIFICATE IS ISSUED AS A MATTER OF INFORMATION ONLY AND CONFERS NO RIGHTS UPON THE CERTIFICATE HOLDER. THIS CERTIFICATE DOES NOT AFFIRMATIVELY OR NEGATIVELY AMEND, EXTEND OR ALTER THE COVERAGE AFFORDED BY THE POLICIES BELOW. THIS CERTIFICATE OF INSURANCE DOES NOT CONSTITUTE A CONTRACT BETWEEN THE ISSUING INSURER(S), AUTHORIZED REPRESENTATIVE OR PRODUCER, AND THE CERTIFICATE HOLDER.

IMPORTANT: If the certificate holder is an ADDITIONAL INSURED, the policy(ies) must have ADDITIONAL INSURED provisions or be endorsed. If SUBROGATION IS WAIVED, subject to the terms and conditions of the policy, certain policies may require an endorsement. A statement on this certificate does not confer rights to the certificate holder in lieu of such endorsement(s).

PRODUCER License # 231432 Hub International Gulf South 3861 Ambassador Caffery Parkway Suite 550 Lafayette, LA 70503	CONTACT NAME: Lisa Savant	
	PHONE (A/C, No, Ext): FAX (A/C, No):	
	E-MAIL ADDRESS: lisa.savant@hubinternational.com	
INSURED Duplantis Design Group, PC 314 East Bayou Road Thibodaux, LA 70301	INSURER(S) AFFORDING COVERAGE	NAIC #
	INSURER A : Beazley Insurance Company	37540
	INSURER B : Houston Specialty Insurance Company	12936
	INSURER C : Navigators Insurance Company	42307
	INSURER D : Manufacturers Alliance Insurance Company	36897
	INSURER E : HDI Global Specialty SE	086486
	INSURER F :	

COVERAGES

CERTIFICATE NUMBER:

REVISION NUMBER:

THIS IS TO CERTIFY THAT THE POLICIES OF INSURANCE LISTED BELOW HAVE BEEN ISSUED TO THE INSURED NAMED ABOVE FOR THE POLICY PERIOD INDICATED. NOTWITHSTANDING ANY REQUIREMENT, TERM OR CONDITION OF ANY CONTRACT OR OTHER DOCUMENT WITH RESPECT TO WHICH THIS CERTIFICATE MAY BE ISSUED OR MAY PERTAIN, THE INSURANCE AFFORDED BY THE POLICIES DESCRIBED HEREIN IS SUBJECT TO ALL THE TERMS, EXCLUSIONS AND CONDITIONS OF SUCH POLICIES. LIMITS SHOWN MAY HAVE BEEN REDUCED BY PAID CLAIMS.

INSR LTR	TYPE OF INSURANCE	ADDL INSD	SUBR WVD	POLICY NUMBER	POLICY EFF (MM/DD/YYYY)	POLICY EXP (MM/DD/YYYY)	LIMITS
A	<input checked="" type="checkbox"/> COMMERCIAL GENERAL LIABILITY			V35998230101	9/1/2023	9/1/2024	EACH OCCURRENCE \$ 1,000,000
	<input type="checkbox"/> CLAIMS-MADE <input checked="" type="checkbox"/> OCCUR		DAMAGE TO RENTED PREMISES (Ea occurrence) \$ 50,000				
	<input checked="" type="checkbox"/> Occurrence Basis		MED EXP (Any one person) \$ 5,000				
			PERSONAL & ADV INJURY \$ 1,000,000				
	GEN'L AGGREGATE LIMIT APPLIES PER:						GENERAL AGGREGATE \$ 2,000,000
	<input checked="" type="checkbox"/> POLICY <input checked="" type="checkbox"/> PROJECT <input type="checkbox"/> LOC						PRODUCTS - COMP/OP AGG \$ 2,000,000
	OTHER:						\$
B	AUTOMOBILE LIABILITY			HSLR180890700	9/1/2023	9/1/2024	COMBINED SINGLE LIMIT (Ea accident) \$ 1,000,000
	<input type="checkbox"/> ANY AUTO OWNED AUTOS ONLY	<input checked="" type="checkbox"/> SCHEDULED AUTOS	BODILY INJURY (Per person) \$				
	<input checked="" type="checkbox"/> HIRED AUTOS ONLY	<input checked="" type="checkbox"/> NON-OWNED AUTOS ONLY	BODILY INJURY (Per accident) \$				
			PROPERTY DAMAGE (Per accident) \$				
						\$	
C	<input checked="" type="checkbox"/> UMBRELLA LIAB <input checked="" type="checkbox"/> OCCUR			HO23LIAZ0F16302	9/1/2023	9/1/2024	EACH OCCURRENCE \$ 5,000,000
	<input type="checkbox"/> EXCESS LIAB <input type="checkbox"/> CLAIMS-MADE		AGGREGATE \$ 5,000,000				
	DED RETENTION \$		\$				
D	WORKERS COMPENSATION AND EMPLOYERS' LIABILITY			2023011484005Y	9/1/2023	9/1/2024	<input checked="" type="checkbox"/> PER STATUTE <input type="checkbox"/> OTH-ER
	ANY PROPRIETOR/PARTNER/EXECUTIVE OFFICER/MEMBER EXCLUDED? (Mandatory in NH)	Y/N <input checked="" type="checkbox"/> N	E.L. EACH ACCIDENT \$ 1,000,000				
	If yes, describe under DESCRIPTION OF OPERATIONS below	N/A	E.L. DISEASE - EA EMPLOYEE \$ 1,000,000				
			E.L. DISEASE - POLICY LIMIT \$ 1,000,000				
E	Professional Liabili			12086317-B	1/18/2024	1/18/2025	Professional 5,000,000
A	Protection & Ind			V35999230101	9/1/2023	9/1/2024	P&I 1,000,000

DESCRIPTION OF OPERATIONS / LOCATIONS / VEHICLES (ACORD 101, Additional Remarks Schedule, may be attached if more space is required)

CERTIFICATE HOLDER

CANCELLATION

Insured's Copy

SHOULD ANY OF THE ABOVE DESCRIBED POLICIES BE CANCELLED BEFORE THE EXPIRATION DATE THEREOF, NOTICE WILL BE DELIVERED IN ACCORDANCE WITH THE POLICY PROVISIONS.

AUTHORIZED REPRESENTATIVE

TEC Professional Services Questionnaire

A. Project Name and Advertisement Resolution Number:
Professional Landscape Architectural Services

B. Firm Name & Address:



STRATUM
ENGINEERING, LLC

Stratum Engineering, LLC
585 Johnny F. Smith Ave,
Slidell, LA 70460

C. Name, title and contact information of Principal, as defined in Section 2-926 of the Jefferson Parish Code of Ordinances, who is a registered, licensed architect, professional engineer, or surveyor in the State of Louisiana:

Tony Maroun, P.E. - Principal (LA License No. 26198)
585 Johnny F. Smith Avenue
Slidell, Louisiana 70460
Phone: (985) 643-1160
Email: tmaroun@stratumengr.com

D. Name and contact information of employee who is a registered and licensed architect, professional engineer, or surveyor in the State of Louisiana in the applicable discipline. A subcontractor may be substituted here only if the advertised Project requires more than one discipline.

William Dean McInnis II, P.E. - Vice President (LA License No. 40009)
585 Johnny F. Smith Avenue
Slidell, Louisiana 70460
Phone: (985) 643-1160
Email: dmcinnis@stratumengr.com

E. Please provide the number of employees whose primary function corresponds with each category:

<u>4</u> Administrative	___ Estimators	___ Specification Writers
___ Architects (Licensed)	___ Geologists	___ Structural Engineers
___ Chemical Engineers	<u>3</u> Geotechnical Engineers	___ Graduate Engineers
___ Civil Engineers	___ Interior Designers	<u>2</u> Project Managers
<u>13</u> Construction Inspectors	___ Landscape Architects	___ Clerical
___ Ecologists	___ Land Surveyor	___ Grant/Funding Specialist
___ Electrical Engineers	___ Mechanical Engineers	___ Sanitary Engineers
___ Engineer Intern	___ Environmental Engineers	
___ Professional Land Surveyors		

22 TOTAL

F. Is this submittal by a JOINT-VENTURE? Please check:

☐

YES

☒

NO

If marked "No" skip to Section I. "Yes" completed Sections G-H.

TEC Professional Services Questionnaire

G. If submittal is by JOINT-VENTURE, list the firms participating and outline specific areas of responsibility (including administrative, technical, and financial) for each firm. Please attach additional pages if necessary.

1. N/A

2. N/A

H. Has this JOINT-VENTURE previously worked together? Please check: Yes_____ No _____

I. List all subcontractors anticipated for this Project. Please note that all subcontractors must submit a fully completed copy of this questionnaire, applicable licenses, and any other information required by the advertisement. See Jefferson Parish Code of Ordinances, Sec. 2-928(a)(3). Please attach additional pages if necessary.

Name & Address:	Specialty:	Worked with Firm Before (Yes or No):
See Prime Consultant's TEC	See Prime Consultant's TEC	See Prime Consultant's TEC

J. Please specify the total number of support personnel that may assist in the completion of this Project: 10

TEC Professional Services Questionnaire

PROFESSIONAL IN CHARGE OF PROJECT:
Name & Title:
Tony Maroun, P.E. Principal
Project Assignment:
Principal in Charge
Name of Firm with which associated:
Stratum Engineering, LLC
Years' experience with this firm:
15 (24 with previous firm)
Education: Degree(s)/Year/Specialization:
Master of Science in Civil Engineering / 1987 / University of New Orleans Bachelor of Science in Civil Engineering / 1984 / University of New Orleans
Active registration: Year first registered/discipline:
Professional Engineer (Civil) / 1995 / Louisiana License No. 26198
Other experience and qualifications relevant to the proposed Project:
<p>Mr. Maroun established Stratum Engineering in 2009. He has almost 40 years of experience in the geotechnical engineering and the materials testing and inspection industry. Under his leadership, the firm has experienced significant growth in a short period of time, and through referrals and repeat client business, the firm has become well recognized in the market place. Presently, Mr. Maroun leads a group of technical professionals who share his beliefs and passions. He continues to be a hands-on engineer and oversees the company's overall operations, promotes Stratum Engineering's core values and commitments, and drives growth and development of new disciplines. Prior to establishing Stratum Engineering, Mr. Maroun spent over 24 years with a National Engineering firm located in Jefferson Parish where he began as an engineering technician. He eventually worked his way up the ranks to division manager, district manager, and vice president for the geotechnical, environmental, and construction materials testing divisions in Southeast Louisiana and Mississippi Gulf regions. Mr. Maroun is familiar with Jefferson Parish protocols/standards and oversaw several Jefferson Parish projects during his tenure with the previous firm.</p>

TEC Professional Services Questionnaire

KEY PERSON, SPECIALIST, OR INDIVIDUAL CONSULTANT:

Name & Title:

William "Dean" McInnis II, P.E.
Vice President

Project Assignment:

Senior Geotechnical Engineer / Laboratory Supervisor

Name of Firm with which associated:

Stratum Engineering, LLC

Years' experience with this firm:

13 (2 with previous firm)

Education: Degree(s)/Year/Specialization:

Bachelor of Science in Civil Engineering / 2011 / University of New Orleans

Active registration: Year first registered/discipline:

Professional Engineer (Civil) / 2015 / Louisiana License No. 40009

Other experience and qualifications relevant to the proposed Project:

Mr. McInnis is presently providing geotechnical engineering services on a variety of projects. He routinely performs engineering analyses for the design of retaining walls, drilled shafts, auger cast-in-place piles, driven piles, shallow footings, mat foundations, and flexible and rigid pavements. He is responsible for project coordination with clients, architects, and structural engineers during the design and construction phases. In addition to proposal and report preparation for commercial and industrial projects, as well as city and parish projects, his duties include coordination with field personnel and supervision of the laboratory operations which consist, but are not limited to, supervising and training laboratory personnel as per ASTM and AASHTO procedures, as well as US Army Corps of Engineers procedures. Mr. McInnis is also in charge of updating records of laboratory inventory and managing calibrations of the laboratory test apparatus. Mr. McInnis is NICET certified in Geotechnical Engineering Technology for Laboratory Testing (Level II) as well as Construction Material Testing of Soils, Concrete and Asphalt (Level I) and certified as an ACI Aggregate Testing Technician. He also maintains the LA Water Well Driller's license for Stratum Engineering's drilling operations.

TEC Professional Services Questionnaire

KEY PERSON, SPECIALIST, OR INDIVIDUAL CONSULTANT:

Name & Title:

Robert D. Fowler
Senior Project Manager (Construction Materials Testing Services)

Project Assignment:

Senior Project Manager / Field Supervisor

Name of Firm with which associated:

Stratum Engineering, LLC

Years' experience with this firm:

12 (20 with other firm)

Education: Degree(s)/Year/Specialization:

High School Diploma

Active registration: Year first registered/discipline:

N/A

Other experience and qualifications relevant to the proposed Project:

Mr. Fowler currently serves as the senior project manager for construction materials testing services and has over 30 years of experience. He presently oversees the day to day operations including project coordination with clients during the construction phases, as well as preparation of budget summaries and proposals. He supervises the field technicians and ensures they have the necessary support to complete daily field assignments. He is also involved with field and laboratory testing on a variety of projects and serves as a senior engineering technician. His field experience includes earthwork inspection, performing field density testing, concrete placement inspection, pile logging and pile load tests, vibration monitoring, asphaltic concrete inspection, reinforcing steel inspection, post-tension and pre-stressing inspections. Mr. Fowler currently holds multiple certifications from LADOTD and MDOT for asphalt and concrete inspection as well as being certified by ACI as a Level I Laboratory Technician, Field Technician and Base Testing Technician.

TEC Professional Services Questionnaire

KEY PERSON, SPECIALIST, OR INDIVIDUAL CONSULTANT:

Name & Title:

Mitchell P. Landry, P.E.
Project Engineer

Project Assignment:

Project Engineer

Name of Firm with which associated:

Stratum Engineering, LLC

Years' experience with this firm:

5 years

Education: Degree(s)/Year/Specialization:

Bachelor of Science in Petroleum Engineering

Active registration: Year first registered/discipline:

Professional Engineer (Civil) / 2024 / Louisiana License No. 49089

Other experience and qualifications relevant to the proposed Project:

Mr. Landry is presently providing geotechnical engineering services on a variety of projects. He routinely performs engineering analyses of settlement, design of retaining walls, drilled shafts, auger cast-in-place piles, driven piles, shallow footings, mat foundations, and flexible and rigid pavements. He is responsible for project coordination with clients, architects, and structural engineers during the design and construction phases. He is also in charge of the drilling operations and ensures that project deadlines are met. In addition, Mr. Landry assists with overseeing laboratory operations. He is certified as a Level I ACI Field Technician.

TEC Professional Services Questionnaire

KEY PERSON, SPECIALIST, OR INDIVIDUAL CONSULTANT:

Name & Title:

Alex Hontiveros
Engineering Field & Laboratory Technician

Project Assignment:

Engineering Field & Laboratory Technician

Name of Firm with which associated:

Stratum Engineering, LLC

Years' experience with this firm:

6 (2 with other firm)

Education: Degree(s)/Year/Specialization:

Bachelor of Science in Civil Engineering / 2014 / University of New Orleans

Active registration: Year first registered/discipline:

N/A

Other experience and qualifications relevant to the proposed Project:

Mr. Hontiveros' duties include, but are not limited to, maintaining the concrete and soil laboratories, management and handling of incoming samples, curing and preparation of samples for testing and performing laboratory tests in accordance with applicable ATSM and AASHTO procedures on project samples and proficiency samples. In addition, Alex's duties include conducting geotechnical engineering testing on boring samples for several projects such as Atterberg Limits, unconfined compression, particle size analysis, moisture content determination in general accordance with applicable ASTM procedures. His field experience includes pile logging, concrete placement inspection, and concrete strength testing for various projects.

TEC Professional Services Questionnaire

L. Work by Firm or Joint-Venture members which best illustrates current qualifications relevant to this Project. Please include any and all work performed for the Lafitte Area Independent Levee District (LAILD). Please attach additional pages if necessary.

PROJECT NO. 1

Project Name, Location and
Owner's contact information:

Nature of Firm's Responsibility:

TARGET STORE
The Esplanade Mall
Kenner, LA

Simon Property Group
225 W. Washington Street
Indianapolis, IN 46204

Conducted a geotechnical investigation and provided a full report with recommendations for foundation and pavement systems for the project. Also provided testing and inspection services including earthwork, concrete, pile installation monitoring and vibration monitoring for construction of a new single story Target Store in Kenner at the former Mervyn's Department Store location.



Jefferson
Parish
State of Louisiana

Completion Date
(Actual or Estimated):

Estimated Cost:

Entire Project:

Work for which
Firm was Responsible:

March 2010

\$10,000,000

\$60,000

TEC Professional Services Questionnaire

L. Work by Firm or Joint-Venture members which best illustrates current qualifications relevant to this Project. Please include any and all work performed for the Lafitte Area Independent Levee District (LAILD). Please attach additional pages if necessary.

PROJECT NO. 2

Project Name, Location and
Owner's contact information:

Nature of Firm's Responsibility:

**INSPIRED LIVING ASSISTED
LIVING FACILITY
Kenner, LA**

Woodward Design+Build
1000 S. Norman C. Francis Pkwy
New Orleans, LA 70125
(504) 822-6443

Conducted a geotechnical investigation and provided a full report with recommendations for foundation and pavement systems for the project. Also provided full service testing and inspection services as well as consulting services as the Geotechnical Engineer of Record for the construction of a multi-story assisted living facility in Kenner.



Jefferson
Parish
State of Louisiana

Completion Date
(Actual or Estimated):

Estimated Cost:

Entire Project:

Work for which
Firm was Responsible:

February 2017

\$25,000,000

\$80,000

TEC Professional Services Questionnaire

L. Work by Firm or Joint-Venture members which best illustrates current qualifications relevant to this Project. Please include any and all work performed for the Lafitte Area Independent Levee District (LAILD). Please attach additional pages if necessary.

PROJECT NO. 3

Project Name, Location and
Owner's contact information:

Nature of Firm's Responsibility:

**OCHSNER THERAPY &
WELLNESS**

3700 Williams Boulevard
Kenner, LA

Duplantis Design Group, PC
16564 E. Brewster Rd, Ste 101
Covington, LA 70433
(985) 249-6180

Conducted a geotechnical investigation and provided a full report with recommendations for foundation and pavement systems for the project. Also provided testing and inspection services including earthwork, concrete, pile installation monitoring, and vibration monitoring for construction of a new medical facility in Kenner.



Jefferson
Parish
State of Louisiana

Completion Date
(Actual or Estimated):

Estimated Cost:

Entire Project:

Work for which
Firm was Responsible:

March 2017

\$2,000,000

\$15,000

TEC Professional Services Questionnaire

L. Work by Firm or Joint-Venture members which best illustrates current qualifications relevant to this Project. Please include any and all work performed for the Lafitte Area Independent Levee District (LAILD). Please attach additional pages if necessary.

PROJECT NO. 4

Project Name, Location and
Owner's contact information:

Nature of Firm's Responsibility:

**PROVIDENT METAIRIE
SELF-STORAGE**

3017 N. Causeway Blvd
Metairie, LA

Provident Realty Advisors, Inc.
c/o Pritchard Associates, Inc.
2121 N. Akard St, Ste 10
Dallas, TX 75201
(214) 797-1605

Conducted a geotechnical investigation and provided a full report with recommendations for foundation and pavement systems for the project. Also provided full service testing and inspection services as well as consulting services as the Geotechnical Engineer of Record for the construction of a multi-story self-storage facility in Metairie.



Jefferson
Parish
State of Louisiana

Completion Date
(Actual or Estimated):

Estimated Cost:

Entire Project:

Work for which
Firm was Responsible:

April 2019

\$40,000,000

\$120,000

TEC Professional Services Questionnaire

L. Work by Firm or Joint-Venture members which best illustrates current qualifications relevant to this Project. Please include any and all work performed for the Lafitte Area Independent Levee District (LAILD). Please attach additional pages if necessary.

PROJECT NO. 5

Project Name, Location and Owner's contact information:

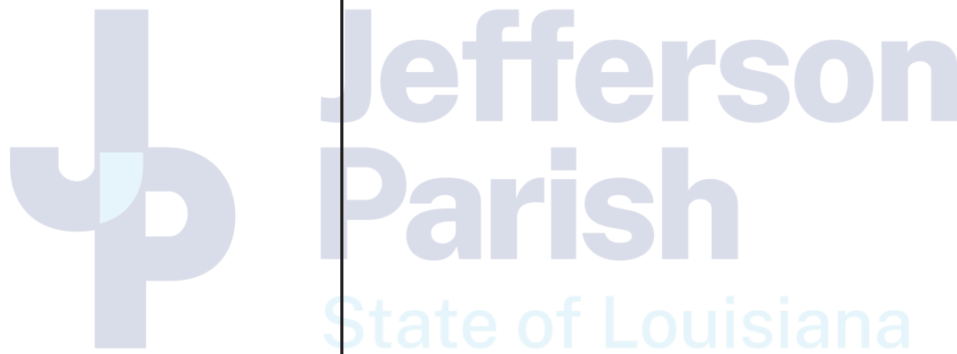
Nature of Firm's Responsibility:

THE BLAKE AT COLONIAL COUNTRY CLUB

Jefferson Hwy & Colonial Club Dr
Harahan, LA

EBM Group, LLC
812 Downtowner Boulevard
Mobile, AL 36609
(251) 583-0789

Conducted a geotechnical investigation and provided a full report with recommendations for foundation and pavement systems for the project. Also provided full service testing and inspection services as well as consulting services as the Geotechnical Engineer of Record for the construction of a 2-story assisted living facility in Harahan.



Completion Date
(Actual or Estimated):

Estimated Cost:

Entire Project:

Work for which
Firm was Responsible:

November 2020

\$30,000,000

\$89,000

TEC Professional Services Questionnaire

L. Work by Firm or Joint-Venture members which best illustrates current qualifications relevant to this Project. Please include any and all work performed for the Lafitte Area Independent Levee District (LAILD). Please attach additional pages if necessary.

PROJECT NO. 6

Project Name, Location and
Owner's contact information:

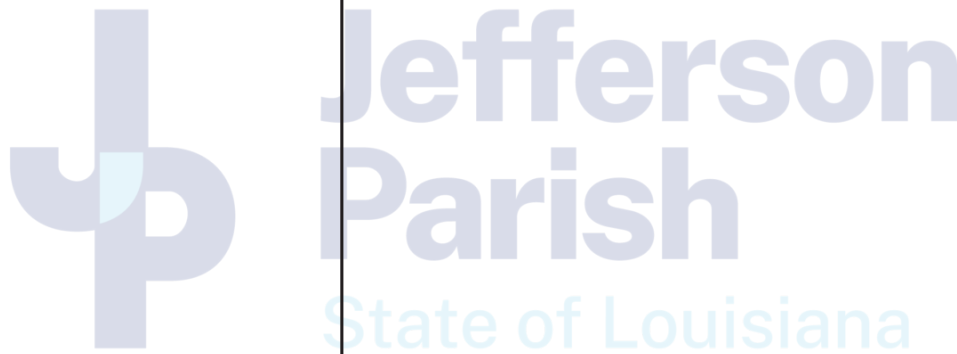
Nature of Firm's Responsibility:

SELF-STORAGE FACILITY

Citrus Blvd & Sams Ave
Jefferson, LA

Citrus Blvd. Development Company
c/o GHK Developments, Inc.
3920 Magazine St
New Orleans, LA 70115
(504) 866-7300

Conducted a geotechnical investigation and provided a full report with recommendations for foundation and pavement systems for the project. Also provided full service testing and inspection services as well as consulting services as the Geotechnical Engineer of Record for the construction of a multi-story self-storage facility in Jefferson.



Completion Date
(Actual or Estimated):

Estimated Cost:

Entire Project:

Work for which
Firm was Responsible:

April 2019

\$11,000,000

\$32,000

TEC Professional Services Questionnaire

L. Work by Firm or Joint-Venture members which best illustrates current qualifications relevant to this Project. Please include any and all work performed for the Lafitte Area Independent Levee District (LAILD). Please attach additional pages if necessary.

PROJECT NO. 7

Project Name, Location and
Owner's contact information:

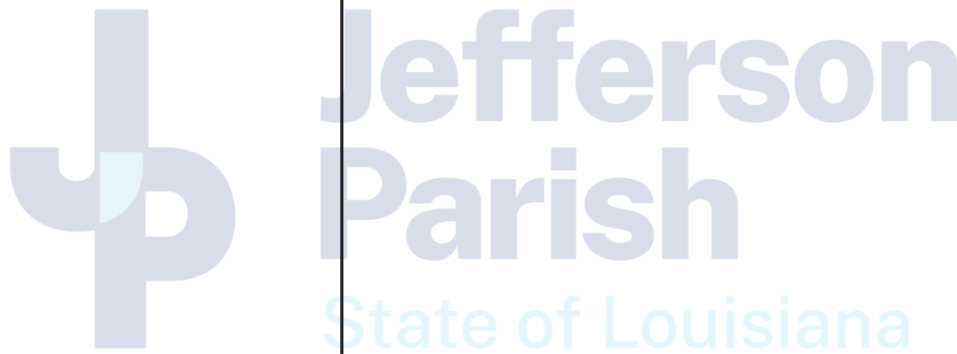
Nature of Firm's Responsibility:

HOME2SUITES

Veterans Blvd & Tifton Ave
Kenner, LA

Patel Construction, LLC
2402 Fox Hollow Street
Lake Charles, LA 70605
(225) 205-1219

Conducted a geotechnical investigation and provided a full report with recommendations for foundation and pavement systems for the project. Also provided testing and inspection services including concrete, pile installation monitoring, steel inspection, and vibration monitoring for construction of a new multi-story hotel in Kenner.



Completion Date
(Actual or Estimated):

Estimated Cost:

Entire Project:

Work for which
Firm was Responsible:

July 2020

\$5,000,000

\$33,000

TEC Professional Services Questionnaire

L. Work by Firm or Joint-Venture members which best illustrates current qualifications relevant to this Project. Please include any and all work performed for the Lafitte Area Independent Levee District (LAILD). Please attach additional pages if necessary.

PROJECT NO. 8

Project Name, Location and
Owner's contact information:

Nature of Firm's Responsibility:

RAY BRANDT PORRSCHÉ

8900 Veterans Memorial Blvd
Metairie, LA

VergesRome Architects, APAC
320 N. Carrollton Ave, Ste 100
New Orleans, LA 70119
(504) 488-7739

SE completed a geotechnical investigation consisting of seven (7) borings drilled to depths of 6 to 80 feet in order to provide foundation and pavement recommendations for a new automobile dealership consisting of a 2-story main building and a single story pre-owned sales building in Metairie.



Jefferson
Parish
State of Louisiana

Completion Date
(Actual or Estimated):

Estimated Cost:

Entire Project:

Work for which
Firm was Responsible:

March 2019

\$1,500,000

\$10,500

TEC Professional Services Questionnaire

L. Work by Firm or Joint-Venture members which best illustrates current qualifications relevant to this Project. Please include any and all work performed for the Lafitte Area Independent Levee District (LAILD). Please attach additional pages if necessary.

PROJECT NO. 9

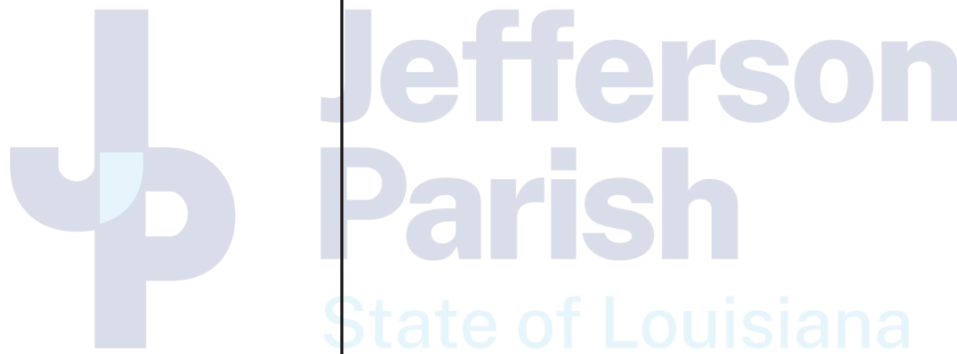
Project Name, Location and Owner's contact information:

Nature of Firm's Responsibility:

CLEARVIEW MALL APARTMENTS
Metairie, LA

Audubon Communities
Management, LLC
6525 The Corners Pkwy, Ste 216
Peachtree Corners, GA 30092
(678) 710-8263

SE completed a geotechnical investigation consisting of seven (7) borings drilled to a depth of 80 to 100 feet in order to provide foundation and pavement recommendations for a new multi-story apartment complex and parking garage structure at the Clearview Mall in Metairie. SE also provided full service testing and inspection services as well as consulting services for the project as the Geotechnical Engineer of Record.



Completion Date
(Actual or Estimated):

Estimated Cost:

Entire Project:

Work for which
Firm was Responsible:

In Progress

\$55,000,000

\$154,200

TEC Professional Services Questionnaire

L. Work by Firm or Joint-Venture members which best illustrates current qualifications relevant to this Project. Please include any and all work performed for the Lafitte Area Independent Levee District (LAILD). Please attach additional pages if necessary.

PROJECT NO. 10

Project Name, Location and
Owner's contact information:

Nature of Firm's Responsibility:

**JOHN ALARIO JR. SPORTS
COMPLEX**

Nicolle Boulevard
Avondale, LA

Louisiana Stadium & Exposition
c/o LEGENDS Project Development
1500 Sugar Bowl Dr, Ste A
Caesars Superdome
New Orleans, LA 70112

SE completed a peer review of the initial report completed for the project by others and was able to further define the estimated settlement, but recommended a supplemental investigation consisting of CPT soundings to verify the subsurface conditions and provide a better estimation of the magnitude and time rate of settlement.

Based on the supplemental investigation, SE was able to further refine the surcharge program in an effort to meet the project timetable by making recommendations for wick drains installed to a depth of 70 feet on a triangular spacing of 6 feet. Approximately 9 to 10 feet of fill was placed in the Amenities area along with 5 to 8 feet of fill in the fields. Settlement plates were installed and monitored in all surcharge areas for a period of 12 months. SE provided special inspection & testing during the surcharge program.

Completion Date
(Actual or Estimated):

Estimated Cost:

Entire Project:

Work for which
Firm was Responsible:

In Progress

\$20,600,000

\$60,400

TEC Professional Services Questionnaire

M. List all prior and/or on-going litigation between Firm and Jefferson Parish. Please attach additional pages if necessary.

Parties:		Status/Result of Case:
Plaintiff:	Defendant:	
N/A	N/A	N/A

N. Use this space to provide any additional information or description of resources supporting Firm's qualifications for the proposed project.

Stratum Engineering, LLC (SE) is a multi-disciplinary, locally owned Geotechnical Engineering and Construction Materials Testing and Inspection firm that is dedicated to the success of our clients. We are committed to consistently delivering quality service by understanding the project needs, communicating effectively and delivering our recommendations on time and within budget. SE has the expertise to provide services ranging from the site evaluation phase through the construction phase of the project with emphasis on a solution oriented approach to individual needs. Personal attention to every project and continuous interaction are just some of the benefits you can expect when working with SE which is led by its principal and founder, Mr. Tony Maroun, who has been practicing in this industry for almost 40 years. Our dedicated team of professionals has been involved with projects of various sizes throughout Louisiana and the Mississippi Gulf Coast region.

Stratum Engineering, LLC (SE) is certified as a Small Entrepreneurship with the Louisiana Economic Development's Hudson Initiative and offers a range of services to assist our clients with all phases of construction projects. Our broad range of geotechnical services includes geotechnical engineering and consulting, geotechnical drilling and laboratory testing. Our geotechnical engineering services include subsurface soil and groundwater investigations, and studies for design, construction and remedial work. The engineering analyses include, but are not limited to, design of shallow and deep foundations, slope stability analysis of earthen embankments, retaining walls, sheet pile recommendations and pavement recommendations including ground stabilization and improvements.

Our drilling services are provided utilizing our in-house drilling equipment as well as through a dedicated drilling subcontractor who is familiar with the area geology. Multiple truck mounted and all-terrain vehicle mounted drill rigs are available to tackle any project type and size, and are ready to mobilize at a short notice. SE has an in-house equipped and accredited geotechnical and construction material testing laboratory capable of performing general soil testing for project design and construction including soil classification tests, strength tests and laboratory compaction tests as well as concrete and aggregate testing. The tests are conducted by experienced technical staff in general accordance with ASTM or AASHTO standard procedures. All of the laboratory testing is supervised by technical staff with years of geotechnical and construction materials testing experience.

O. To the best of my knowledge, the foregoing is an accurate statement of facts.

Signature: 

Printed Name: Tony Maroun

Title: Principal

Date: June 13, 2024



CERTIFICATE OF LIABILITY INSURANCE

DATE (MM/DD/YYYY)
01/12/2024

THIS CERTIFICATE IS ISSUED AS A MATTER OF INFORMATION ONLY AND CONFERS NO RIGHTS UPON THE CERTIFICATE HOLDER. THIS CERTIFICATE DOES NOT AFFIRMATIVELY OR NEGATIVELY AMEND, EXTEND OR ALTER THE COVERAGE AFFORDED BY THE POLICIES BELOW. THIS CERTIFICATE OF INSURANCE DOES NOT CONSTITUTE A CONTRACT BETWEEN THE ISSUING INSURER(S), AUTHORIZED REPRESENTATIVE OR PRODUCER, AND THE CERTIFICATE HOLDER.

IMPORTANT: If the certificate holder is an ADDITIONAL INSURED, the policy(ies) must have ADDITIONAL INSURED provisions or be endorsed. If SUBROGATION IS WAIVED, subject to the terms and conditions of the policy, certain policies may require an endorsement. A statement on this certificate does not confer rights to the certificate holder in lieu of such endorsement(s).

PRODUCER Brown & Brown of Louisiana, LLC 400 East Kaliste Saloom Rd. Ste 1100 Lafayette LA 70508	CONTACT NAME: Stacey Gannaway PHONE (A/C, No, Ext): (337) 234-5111 E-MAIL ADDRESS: Stacey.Gannaway@bbrown.com FAX (A/C, No):																					
INSURED Stratum Engineering, LLC 585 Johnny F. Smith Ave. Slidell LA 70460	<table><tr><th colspan="2">INSURER(S) AFFORDING COVERAGE</th><th>NAIC #</th></tr><tr><td>INSURER A :</td><td>The Travelers Indemnity Company of America</td><td>25666</td></tr><tr><td>INSURER B :</td><td>The Charter Oak Fire Insurance Company</td><td>25615</td></tr><tr><td>INSURER C :</td><td>Travelers Property Casualty Company of America</td><td>25674</td></tr><tr><td>INSURER D :</td><td>Travelers Casualty and Surety Company</td><td>19038</td></tr><tr><td>INSURER E :</td><td>Admiral Insurance Company</td><td></td></tr><tr><td>INSURER F :</td><td></td><td></td></tr></table>	INSURER(S) AFFORDING COVERAGE		NAIC #	INSURER A :	The Travelers Indemnity Company of America	25666	INSURER B :	The Charter Oak Fire Insurance Company	25615	INSURER C :	Travelers Property Casualty Company of America	25674	INSURER D :	Travelers Casualty and Surety Company	19038	INSURER E :	Admiral Insurance Company		INSURER F :		
INSURER(S) AFFORDING COVERAGE		NAIC #																				
INSURER A :	The Travelers Indemnity Company of America	25666																				
INSURER B :	The Charter Oak Fire Insurance Company	25615																				
INSURER C :	Travelers Property Casualty Company of America	25674																				
INSURER D :	Travelers Casualty and Surety Company	19038																				
INSURER E :	Admiral Insurance Company																					
INSURER F :																						

COVERAGES

CERTIFICATE NUMBER: CL2411258961

REVISION NUMBER:

THIS IS TO CERTIFY THAT THE POLICIES OF INSURANCE LISTED BELOW HAVE BEEN ISSUED TO THE INSURED NAMED ABOVE FOR THE POLICY PERIOD INDICATED. NOTWITHSTANDING ANY REQUIREMENT, TERM OR CONDITION OF ANY CONTRACT OR OTHER DOCUMENT WITH RESPECT TO WHICH THIS CERTIFICATE MAY BE ISSUED OR MAY PERTAIN, THE INSURANCE AFFORDED BY THE POLICIES DESCRIBED HEREIN IS SUBJECT TO ALL THE TERMS, EXCLUSIONS AND CONDITIONS OF SUCH POLICIES. LIMITS SHOWN MAY HAVE BEEN REDUCED BY PAID CLAIMS.

INSR LTR	TYPE OF INSURANCE	ADDL INSD	SUBR VVD	POLICY NUMBER	POLICY EFF (MM/DD/YYYY)	POLICY EXP (MM/DD/YYYY)	LIMITS
A	<input checked="" type="checkbox"/> COMMERCIAL GENERAL LIABILITY <input type="checkbox"/> CLAIMS-MADE <input checked="" type="checkbox"/> OCCUR GEN'L AGGREGATE LIMIT APPLIES PER: <input type="checkbox"/> POLICY <input checked="" type="checkbox"/> PROJECT <input type="checkbox"/> LOC OTHER:			6605X613340	01/12/2024	06/12/2024	EACH OCCURRENCE \$ 1,000,000 DAMAGE TO RENTED PREMISES (Ea occurrence) \$ 300,000 MED EXP (Any one person) \$ 5,000 PERSONAL & ADV INJURY \$ 1,000,000 GENERAL AGGREGATE \$ 2,000,000 PRODUCTS - COMP/OP AGG \$ 2,000,000
B	<input checked="" type="checkbox"/> AUTOMOBILE LIABILITY <input type="checkbox"/> ANY AUTO <input type="checkbox"/> OWNED AUTOS ONLY <input checked="" type="checkbox"/> HIRED AUTOS ONLY <input type="checkbox"/> SCHEDULED AUTOS <input checked="" type="checkbox"/> NON-OWNED AUTOS ONLY			BA5X613143	01/12/2024	01/12/2025	COMBINED SINGLE LIMIT (Ea accident) \$ 1,000,000 BODILY INJURY (Per person) \$ BODILY INJURY (Per accident) \$ PROPERTY DAMAGE (Per accident) \$
C	<input checked="" type="checkbox"/> UMBRELLA LIAB <input checked="" type="checkbox"/> EXCESS LIAB DED RETENTION \$			CUP7X354290	01/12/2024	01/12/2025	EACH OCCURRENCE \$ 2,000,000 AGGREGATE \$ 2,000,000
D	<input checked="" type="checkbox"/> WORKERS COMPENSATION AND EMPLOYERS' LIABILITY ANY PROPRIETOR/PARTNER/EXECUTIVE OFFICER/MEMBER EXCLUDED? (Mandatory in NH) If yes, describe under DESCRIPTION OF OPERATIONS below	Y / N Y	N / A	UB5X613002	01/12/2024	01/12/2025	<input checked="" type="checkbox"/> PER STATUTE E.L. EACH ACCIDENT \$ 1,000,000 E.L. DISEASE - EA EMPLOYEE \$ 1,000,000 E.L. DISEASE - POLICY LIMIT \$ 1,000,000
E	Professional Liability			EO00005887202	01/13/2024	01/12/2025	Each Claim \$2,000,000 General Aggregate \$2,000,000

DESCRIPTION OF OPERATIONS / LOCATIONS / VEHICLES (ACORD 101, Additional Remarks Schedule, may be attached if more space is required)

CERTIFICATE HOLDER

CANCELLATION

Stratum Engineering, LLC 585 Johnny F. Smith Ave. Slidell LA 70460	SHOULD ANY OF THE ABOVE DESCRIBED POLICIES BE CANCELLED BEFORE THE EXPIRATION DATE THEREOF, NOTICE WILL BE DELIVERED IN ACCORDANCE WITH THE POLICY PROVISIONS. AUTHORIZED REPRESENTATIVE
--	---

© 1988-2015 ACORD CORPORATION. All rights reserved.



DIVISION OF SMALL BUSINESS SERVICES

This certification acknowledges that

Stratum Engineering, LLC
DBA: Stratum Engineering, LLC

is Certified-Active as a Small Entrepreneurship with
Louisiana Economic Development's Hudson Initiative.

This certification is valid from 9/7/2023 to 9/7/2024 .

Certification No. 26627

A handwritten signature in black ink, reading "Stephanie Hartman", written over a horizontal line.

Stephanie Hartman,
Director, Small Business Services

Statement of Qualifications

AFFIDAVIT

STATE OF Louisiana

PARISH/COUNTY OF Jefferson

BEFORE ME, the undersigned authority, personally came and appeared: Thomas H. Buckel, (Affiant) who after being by me duly sworn, deposed and said that he/she is the fully authorized Partner of Duplantis Design Group, PC (Entity), the party who submitted a Statement of Qualifications (SOQ) to Jefferson Parish Government
_____ (Briefly describe the services the SOQ will cover), to the Parish of Jefferson.

Affiant further said:

Campaign Contribution Disclosures

(Choose A or B, if option A is indicated please include the required attachment):

Choice A X Attached hereto is a list of all campaign contributions, including the date and amount of each contribution, made to current or former elected officials of the Parish of Jefferson by Entity, Affiant, and/or officers, directors and owners, including employees, owning 25% or more of the Entity during the two-year period immediately preceding the date of this affidavit or the current term of the elected official, whichever is greater. Further, Entity, Affiant, and/or Entity Owners have not made any contributions to or in support of current or former members of the Jefferson Parish Council or the Jefferson Parish President through or in the name of another person or legal entity, either directly or indirectly.

Choice B there are **NO** campaign contributions made which would require disclosure under Choice A of this section.

Affiant further said:

Debt Disclosures

(Choose A or B, if option A is indicated please include the required attachment):

Choice A _____ Attached hereto is a list of all debts owed by the affiant to any elected or appointed official of the Parish of Jefferson, and any and all debts owed by any elected or appointed official of the Parish to the Affiant.

Choice B X_____ There are **NO** debts which would require disclosure under Choice A of this section.

Affiant further said:

Solicitation of Campaign Contribution Disclosures

(Choose A or B, if option A is indicated please include the required attachment):

Choice A _____ Attached hereto is a list of all elected officials of the Parish of Jefferson, whether still holding office at the time of the affidavit or not, where the elected official, individually, either by **telephone or by personal contact**, solicited a campaign contribution or other monetary consideration from the Entity, including the Entity's officers, directors and owners, and employees owning twenty-five percent (25%) or more of the Entity, during the two-year period immediately preceding the date the affidavit is signed. Further, to the extent known to the Affiant, the date of any such solicitation is included on the attached list.

Choice B X_____ there are **NO** solicitations for campaign contributions which would require disclosure under Choice A of this section.

Affiant further said:

Subcontractor Disclosures

(Choose A or B, if option A is indicated please include the required attachment):

Choice A X Affiant further said that attached is a listing of all subcontractors, excluding full time employees, who may assist in providing professional services for the aforementioned SOQ.

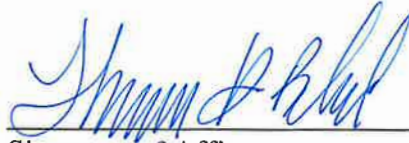
Choice B There are **NO** subcontractors which would require disclosure under Choice A of this section.

Affiant further said:

That Affiant has employed no person, corporation, firm, association, or other organization, either directly or indirectly, to secure the public contract under which he received payment, other than persons regularly employed by the Affiant whose services in connection with the construction, alteration or demolition of the public building or project or in securing the public contract were in the regular course of their duties for Affiant; and

[The remainder of this page is intentionally left blank.]

That no part of the contract price received by Affiant was paid or will be paid to any person, corporation, firm, association, or other organization for soliciting the contract, other than the payment of their normal compensation to persons regularly employed by the Affiant whose services in connection with the construction, alteration or demolition of the public building or project were in the regular course of their duties for Affiant.



Signature of Affiant



Printed Name of Affiant

SWORN AND SUBSCRIBED TO BEFORE ME

ON THE 12th DAY OF June, 2024.



Notary Public



Printed Name of Notary



Notary/Bar Roll Number



My commission expires at death.



CAMPAIGN CONTRIBUTIONS

Below is a list of all elected officials of the Parish of Jefferson, whether still holding office at the time of the affidavit or not, where the elected official, individually, either by telephone or by personal contact, solicited a campaign contribution or other monetary consideration from the Entity, including the Entity's officers, directors and owners, and employees owning twenty-five percent (25%) or more of the Entity, during the two-year period immediately preceding the date the affidavit is signed. Further, to the extent known to the Affiant, the date of any such solicitation is included on the attached list.

1. Committee to Elect Jennifer Vrancken
\$1,000 / April 2, 2024

SUBCONTRACTOR DISCLOSURES

Below is a listing of all subcontractors, excluding full time employees, who may assist in providing professional services for the aforementioned SOQ.

1. Stratum Engineering, LLC
585 Johnny F. Smith Ave,
Slidell, LA 70460

DUPLANTIS DESIGN GROUP, PC

314 East Bayou Road; Thibodaux, LA 70301
(O) 985.447.0090 (F) 985.447.7009

THIBODAUX
NEW ORLEANS

BATON ROUGE
LAFAYETTE

COVINGTON
HOUSTON